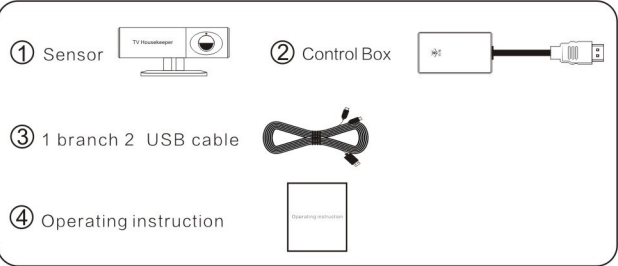


Intelligent child TV housekeeper

Operating instruction

Shenzhen Youya technology co. Ltd

Packing list

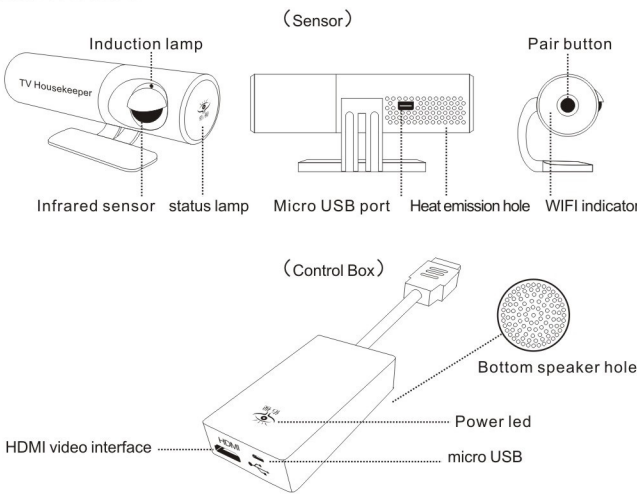


Product parameter

Product name	Intelligent child TV housekeeper		
Induction mode	Human infrared induction		
Control mode	remote real-time control by mobile APP		
Type	YS02HA-W	Video interface	HDMI
Input voltage	5V	Detection distance	1~5m
Wireless mode	Wifi	Wifi frequency	2.4G
Product size	① 83x32x35mm ② 155x35x14mm		

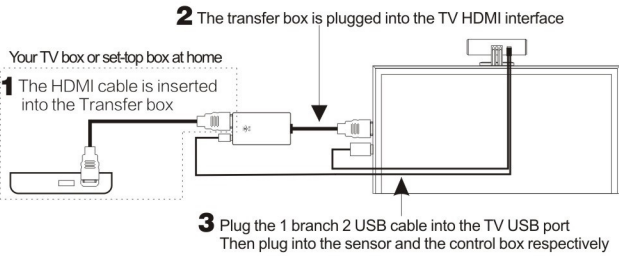
Product introduction

Children are particularly keen on watching TV cartoons and tend to be easily attracted by TV program, however, long-term and close-range TV watching will cause not only a lot of harm, but also affect their eyesight and even intelligence development. Intelligent TV Butler for children is a product that can prevent children from close-range and long-term TV watching. It is designed with remote real-time control by Mobile app, uses human infrared distance sensing, is green, healthy, radiation-proof and has no harm to children, therefore, you can rest assured to use it!



Quick start guide

Equipment installation



Special note: the sensor should be placed above the height of the child
1、Better sense of all the body movements of children
2、Prevent children from unplugging sensor data cable, resulting in failure of induction function

APP download

Scan the QR code to download or enter the app store search download
1、Apple mobile phone into the Apple Store search "TV housekeeper" download.
2、Android phone into the Google Play store search "TV housekeeper" download

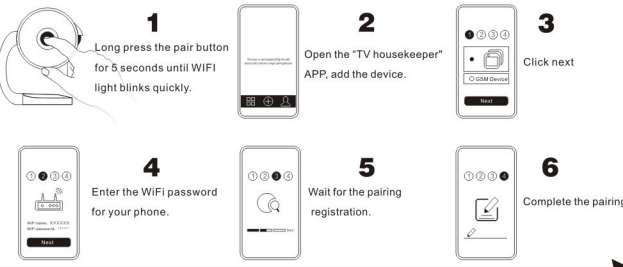


Preventing children from myopia and changing their bad habits

Essential for children

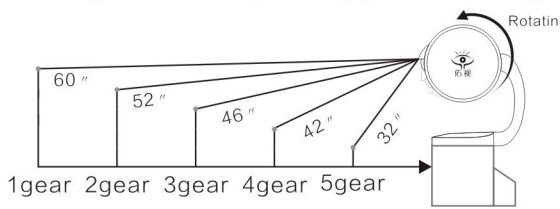
APP connection

When mobile APP is first paired with devices, that the phone must be connected to the WiFi at home, the phone end will no longer restrict the network type when the connection is successful.

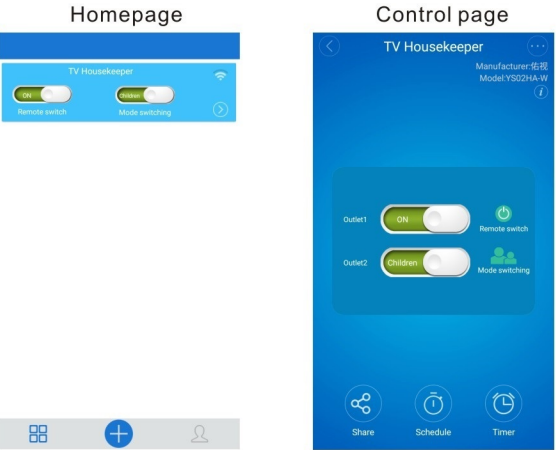


Distance adjustment

Rotate the sensor probe downward, the smaller the angle, the shorter the distance.
(According to the size of the TV and the living room, adjusted according to the actual situation, the following figure is for reference only)



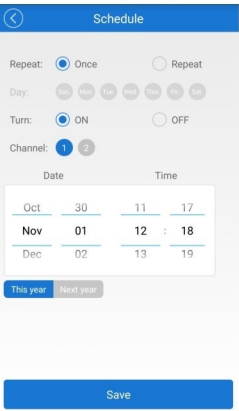
Remote control of mobile APP



Real-time view of TV status

After the successful APP connection, the online status indicates that the TV is on, the offline state indicates that the TV is off. The device is powered by the TV USB port, and the TV shutdown device is also closed simultaneously.

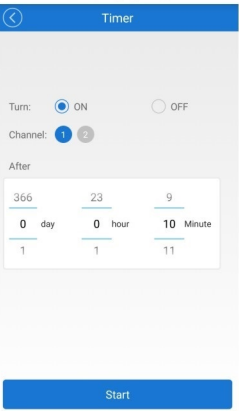
Timing page



Rational time allocation
Set time to watch TV as planned.
E.g.,
Dinner time is 18 to 19 o'clock every day. If you do not want your child/children to watch TV during the period, you may carry out the following two timing settings.

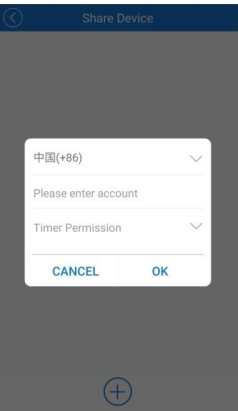
Schedule1
Repeat: Repeat
Turn: OFF
Channel: 1
Time: 18:00
Schedule2
Repeat: Repeat
Turn: ON
Channel: 1
Time: 19:00

Delay page



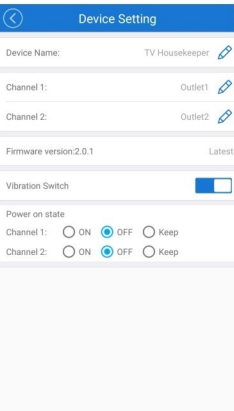
Prevent children from getting addicted to TV.
Set the viewing time according to the situation.
Countdown turns off/on

Device sharing page



One device
Support multiple mobile phones control
The mobile phone that has been paired well can share this device with family members for synchronized control. If the mobile phone of the other side has downloaded and installed it and registered the account, it can be shared to the other side in question by entering the account name thereof.

Power protection Mandatory mode



Set up electrical protection, and the device will still maintain the previous data after it is restarted. Prevent children from restarting equipment to clear data.
Please open the master control page, click on the three-point diagram on the top right-hand corner to adjust the settings to prevent children from restarting the device and thereby clearing the data.

Common problems

I. The voice alert shows that the TV has been turned off, but actually it has been not.
1. Please check whether the equipment is connected correctly. If the TV plays normally after the HDMI line on the interconnecting device has been pulled out, it indicates that the equipment is connected incorrectly, please reconnect it.
2. If the TV plays normally after the HDMI cable on the TV has been pulled out, it indicates that the TV signal source has been incorrectly chosen, please switch it to the current connected HDMI signal interface with the TV remote controller.

II. No voice reminder and the TV hasn't been turned off
It is because the Mobile APP turns on the adult mode. Please switch it to child mode.

III. The pairing of mobile app and device Wifi fails.
1. It has rather high requirements for network signal when it is paired with the device WiFi for the first time, thus, please have the router and the equipment be as close as possible when pairing and free from any obstacles in between.
2. The mobile phone must be connected to the WiFi at home.
3. Please confirm whether the device is in the pairing state. It indicates that it is in the pairing state if the Wifi indicator flashes for 3 times, stops and then cycles.

IV. About distance control.
1. It will not immediately alarm when it gets close to the TV, for the sensor will delay the alarm for a while in order to prevent false alarm of the infrared sensor or environmental interference.
2. The sensing distance should be adjusted according to the actual situation at home.
If the alarm frequency is too high, please lower the angle of the sensor and adjust it to the most appropriate angle.
3. Please ensure that the TV is on when it is put into use. If you stand still in front of the TV, it will be difficult for the sensor to detect you, for the infrared sensor can only identify human with actions and thereby distinguish the human in question from objects.

Warning:

This device complies with Part 15 of the FCC Rules. Operation is subject to the following two conditions: (1) this device may not cause harmful interference, and (2) this device must accept any interference received, including interference that may cause undesired operation.

changes or modifications not expressly approved by the party responsible for compliance could void the user's authority to operate the equipment.

NOTE: This equipment has been tested and found to comply with the limits for a Class B digital device, pursuant to Part 15 of the FCC Rules. These limits are designed to provide reasonable protection against harmful interference in a residential installation. This equipment generates, uses and can radiate radio frequency energy and, if not installed and used in accordance with the instructions, may cause harmful interference to radio communications. However, there is no guarantee that interference will not occur in a particular installation. If this equipment does cause harmful interference to radio or television reception, which can be determined by turning the equipment off and on, the user is encouraged to try to correct the interference by one or more of the following measures:

- Reorient or relocate the receiving antenna.
- Increase the separation between the equipment and receiver.
- Connect the equipment into an outlet on a circuit different from that to which the receiver is connected.
- Consult the dealer or an experienced radio/TV technician for help.

NOTE: This device and its antenna(s) must not be co-located or operation in conjunction with any other antenna or transmitter

RF Exposure Statement

To maintain compliance with FCC’s RF Exposure guidelines, This equipment should be installed and operated with minimum distance of 20Cm the radiator your body. This device and its antenna(s) must not be co-located or operation in conjunction with any other antenna or transmitter