

Wi-Fi:

External power supply

Input voltage: 100V to 240V AC

Frequency: 50Hz to 60Hz

Operating temperature: -4° to 113° F (-20° to 45° C)

Storage temperature: -4° to 113° F (-20° to 45° C)

Relative humidity: 5% to 90% non condensing

1. Joto

2. Mounting screws

3. Nibs

4. Ink Reservoir

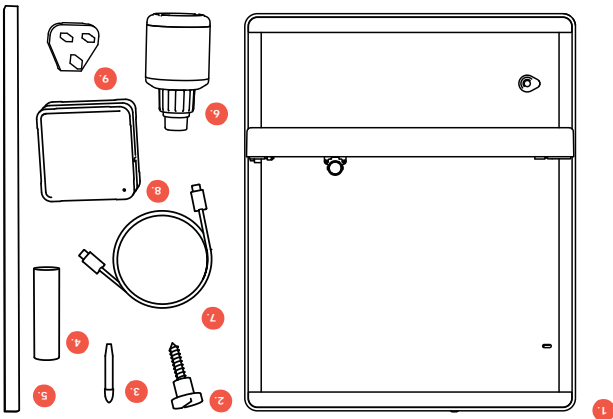
5. Wiper foam

6. Ink

7. Power cable (USB-C)

8. Power supply Unit (PSU)

9. Adaptor (UE/UK only)



What's in the box

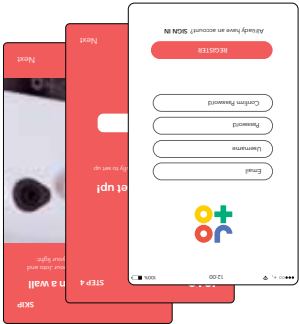
ALL YOU NEED TO GET JOTTING



TURN PIXELS INTO PEN AND INK



Visit our support site www.joto.rocks/howto for top tips and support videos.



Open the Joto app and create a new account. Once you finish the registration, you're ready to follow the setup steps.

Follow the in-app steps

FROM SETTING UP JOTO TO PAIRING YOUR DEVICE



Go to the App Store or Google play, search for 'Joto' and click in our logo to download the Joto app.

First things first

DOWNLOAD THE JOTO APP

HAZARD

The moving arm of the Joto could trap fingers while Joto is in use. Keep hands away from the Joto unit while it is in motion. Moving parts could cause personal injury. Always operate Joto securely fastened and level on the wall or use with an official accessory stand. Keep hands away from the Joto unit while it is in motion. Moving parts could cause personal injury. The slots and openings at the sides of the unit are provided for necessary operation and ventilation. To ensure reliable operation of this apparatus and to protect it from overheating, these slots and openings must never be blocked or covered. Never insert anything metallic into the open parts of this apparatus or touch the inside of the device. This may cause damage or a danger of electric shock. If the Joto is emitting strange noises, strange smells, or smoke, cease using the device immediately, unplug the device, and then store it away safely. Failure to do so will increase the risk of fire. Please contact us immediately at support@joto.rocks in such circumstances.

ADULT USE ONLY. KEEP OUT OF REACH OF CHILDREN. Do not let children play around the product without supervision.

WARNINGS AND NOTICES

Installation On A Wall

Do not hang from the installed product or apply force to it. Do not install the product on a wall that will not support its weight. The product may fall, resulting in physical injury or product damage. Joto (Those Ltd.) is not responsible for any damage to the product, your property, or personal injury caused by installing the product on a wall.

INK & REFILLS

Joto should only be used with approved inks, pen materials and accessories. Misuse of your Joto and/or use of non-approved inks, nibs or other pen materials may result in damage to your product or injury to you, and will void your warranty. Injuries to the user may include, but are not limited to, harm sustained from inhaling substances that are not suitable for writing or drawing. Always read warning labels on ink bottles.

- ⚠

WARNING: DO NOT use Joto near bathtubs, showers, basins or other vessels containing water. This could result in death due to electric shock.
- ⚠

WARNING: DO NOT force Joto's arm to move or try to move the pen yourself, you will break internal and external parts of the Joto device.

SPECIFICATIONS

Output Power: 60W
Output Voltage: 20V
Input Voltage: 240/120V
Power Supply Manufacturer: ACT
Model number: APS-PD060W-G

CARE & MAINTENANCE

For care and maintenance information, and more advice on how to use your Joto, please refer to our website: joto.rocks. If you are struggling with refilling ink, pen nibs, or replacing the eraser sponge, you can watch videos on the process in our FAQs section on our website. To troubleshoot, please visit: joto.rocks/howto. Specifications are subject to change and improvement without notice.

This marking indicates that this product should not be disposed of with other household wastes. To prevent possible harm to the environment or human health from uncontrolled waste disposal, recycle it responsibly to promote the sustainable reuse of material resources.

LIMITED WARRANTY

For more details on your limited warranty, please visit: joto.rocks/warranty. For Joto's Terms and Conditions and other notices please refer to our website: joto.rocks/terms-and-conditions

ADULT USE ONLY. THE JOTO IS NOT A TOY FOR CHILDREN. JOTO is a trademark owned by Those Ltd.

FCC NOTICE

CAN ICES-3 (B)/NMB-3(B)
This device complies with Part 15 of the FCC Rules. Operation is subject to the following two conditions: (1) This device may not cause harmful interference, and (2) this device must accept any interference received, including interference that may cause undesired operation.

Note: This equipment has been tested and found to comply with the limits for a Class B digital device, pursuant to part 15 of the FCC Rules. These limits are designed to provide reasonable protection against harmful interference in a residential installation. This equipment generates, uses and can radiate radio frequency energy and, if not installed and used in accordance with the instructions, may cause harmful interference to radio communications. However, there is no guarantee that interference will not occur in a particular installation. If this equipment does cause harmful interference to radio or television reception, which can be determined by turning the equipment off and on, the user is encouraged to try to correct the interference by one or more of the following measures:

- Reorient or relocate the receiving antenna.
- Increase the separation between the equipment and receiver.
- Connect the equipment into an outlet on a circuit different from that to which the receiver is connected.
- Consult the dealer or an experienced radio/TV technician

Changes or modifications not expressly approved by the party responsible for compliance could void the user's authority to operate the equipment.

Setting up Joto

MAKE SURE YOU DOWNLOAD THE APP BEFORE FOLLOWING THE STEPS BELOW

1. Secure Joto in a safe position

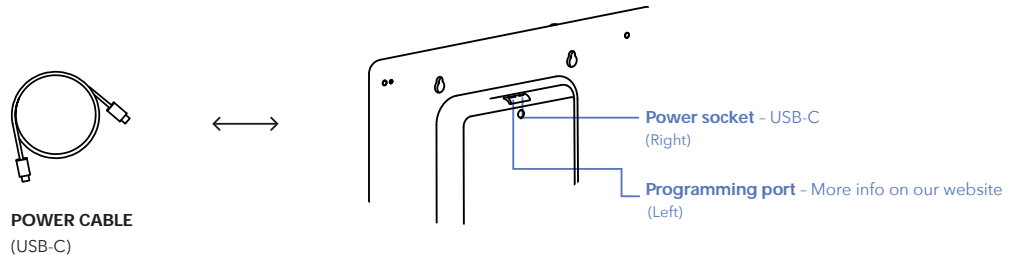
Whether you're using the Joto stand or planning to set up Joto on the wall, make sure that it's in a safe position. For set up, we advise asking for a helping hand to hold Joto while following the next steps.

⚠ Be careful - If Joto is propped up against something, make sure Joto can't slip over.

⚠ To avoid damage to the pen or gantry, NEVER rest Joto on its front side.

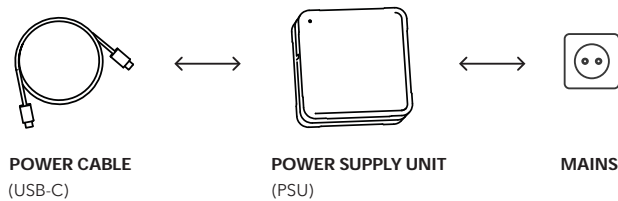
2. Plugging-in

Find the power cable (USB-C) and plug it into the port on the right hand side, at the back of Joto.



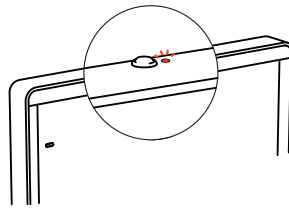
3. Powering up

Plug the other end of the power cable into the PSU first, then plug the PSU into the mains. You'll need to use the UK/Europe adaptor provided if you're based in Europe.



4. Status check

Once Joto is plugged into power, the light at the top will indicate when Joto is ready for pairing. Check the app for pointers on connection status.



Let's get jotting!

Need help?

[CONTACT US](#)

Head over to www.joto.rocks/howto to let us know if you're having an issue. We'll get back to you as soon as possible!

#TopOfTheJots

[WE'D LOVE TO SEE YOUR CREATIONS](#)

Share videos of your jots with us and we'll feature the best on our social feeds, giving you all the kudos of course.

Mounting Joto up on the wall?

For those hanging Joto on your wall, you can use this actual size template to measure the distance between the mounting screws.

