

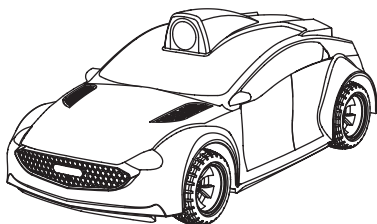
INTRODUCTION

Thank you for purchasing KOBOTIX® REAL RACER™!

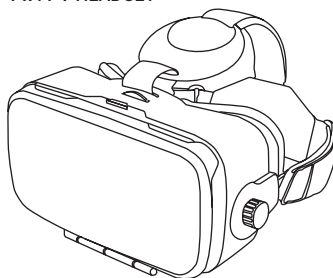
Get ready to race! The future of RC racing has arrived. REAL RACER™ puts you in the drivers seat. Follow the instructions in the manual and you will be up and racing in no time!

WHAT'S INCLUDED

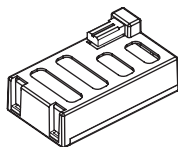
1 x REAL RACER™



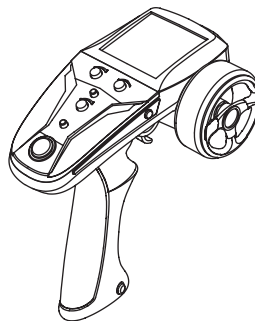
1 x FPV HEADSET



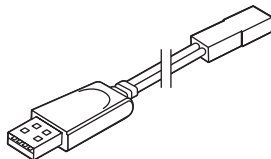
1 x RECHARGEABLE LiPo BATTERY PACK



1 x CONTROLLER



1 x LiPo BATTERY CHARGING CABLE



1 x INSTRUCTION MANUAL



CAUTION:

HAIR ENTANGLEMENT

Tie back and cover hair and secure loose clothing prior to play.



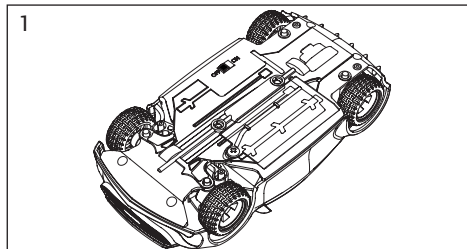
WARNING:

CHOKING HAZARD

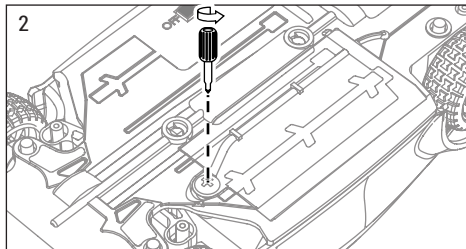
This product is not suitable for children under 3 years because of small parts.

POWERING REAL RACER™

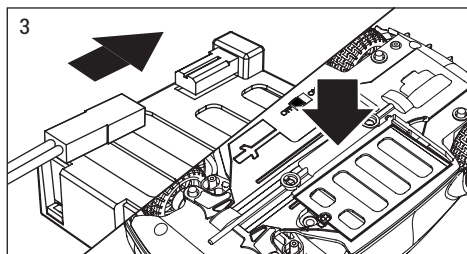
INSTALLING THE LiPo BATTERY PACK



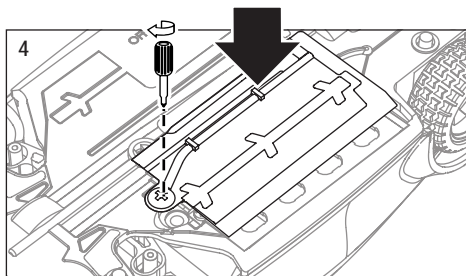
1. Lay the REAL RACER™ Car down so that the Battery Compartment faces upwards.



2. Using a Phillips screwdriver (not included), remove the screw on the Battery Compartment Cover.

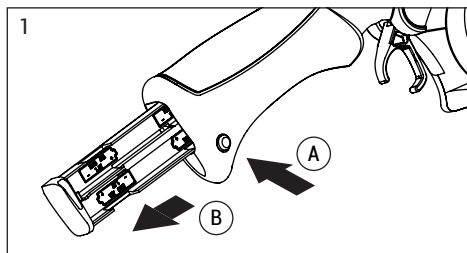


3. Connect the battery connectors together and insert the Rechargeable LiPo Battery Pack (included) into the Battery Compartment.

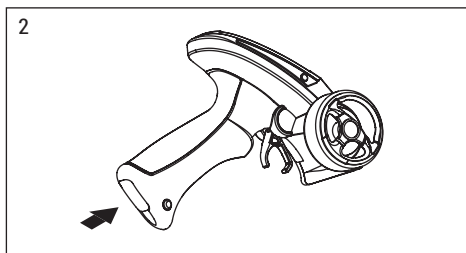


4. Replace the Battery Compartment Cover and tighten screw using the screwdriver. **Do not over-tighten.**

REPLACING BATTERIES IN THE CONTROLLER



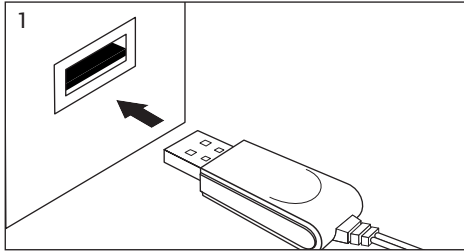
1. (A) Press the button at the bottom of the Controller handle to release the Battery Cartridge.
(B) Insert 4 x AAA batteries (not included). Ensure that the positive and negative polarities match the illustration inside the Battery Cartridge.



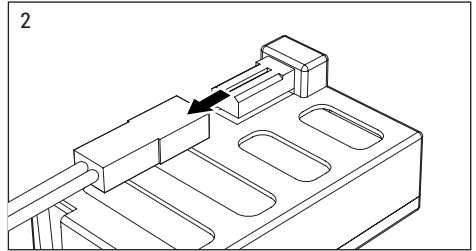
2. Slide the Battery Cartridge back into the Controller until it *clicks* into place.

BATTERY INFORMATION

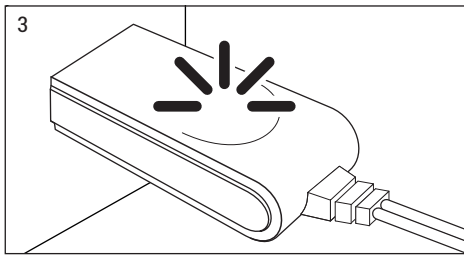
CHARGING THE LiPo BATTERY PACK



1. Plug the charging cable into a powered USB outlet such as a PC or mobile phone charger. The LED will glow GREEN when connected to a USB outlet.



2. Plug the battery connector into the connector on the charging cable. The LED on the charging cable will glow RED to indicate charging in progress.



3. When the LiPo battery is fully charged, the charging cable LED will glow GREEN. Charging time for a fully discharged battery is approximately 60 minutes.

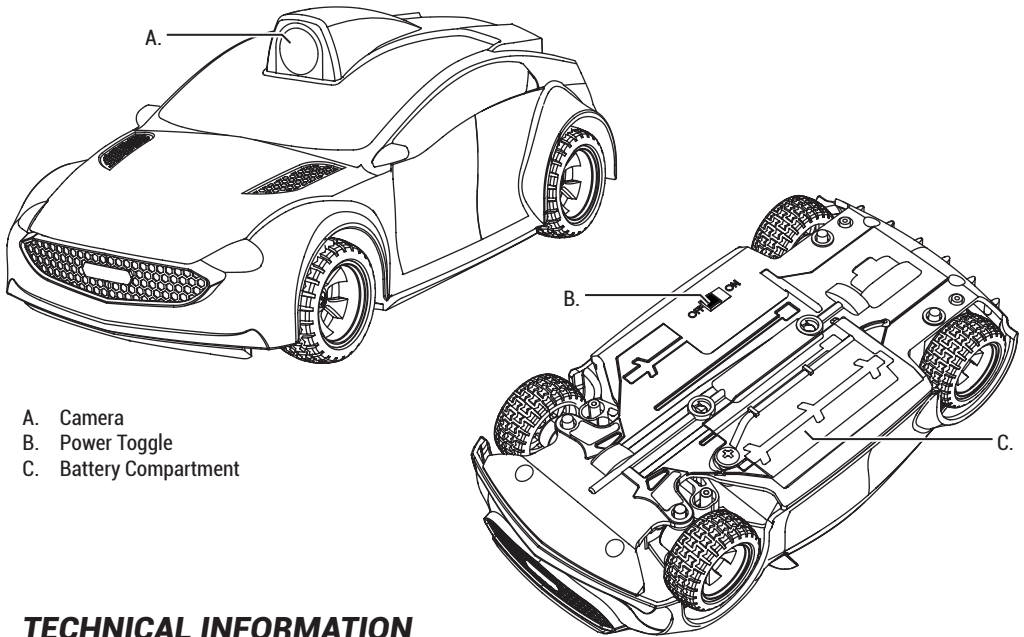
BATTERY SAFETY PRECAUTIONS

In extremely rare circumstances, there may be a risk of a battery leaking fluids that can cause a chemical burn injury or ruin your product. To avoid battery leakage:

- Non-rechargeable batteries are NOT to be recharged.
- Rechargeable LiPo batteries are to be removed from the product before charging.
- Rechargeable LiPo batteries are only to be charged under adult supervision.
- You MUST charge the LiPo battery in a safe area away from any flammable materials.
- NEVER charge the battery unattended at any time. When charging the battery, remain in constant observation of the battery to monitor the process and react immediately to any potential problems.
- DO NOT expose batteries to extreme heat or fire, batteries may leak or explode.
- DO NOT short-circuit the supply terminals.
- DO NOT drop or subject to strong impact.
- DO NOT allow the battery to get wet.
- Only charge the battery with the included battery charging cable.
- Dispose of batteries properly.

USING THE REAL RACER™ CAR

ABOUT THE REAL RACER™ CAR



- A. Camera
- B. Power Toggle
- C. Battery Compartment

TECHNICAL INFORMATION

TRANSMISSION RANGE: Approximately 30 metres (98.4 feet)

MAX SPEED: 20 km/h (12.4 mph)

CAMERA: HD 720p 30 FPS

CONNECTIVITY CONTROL LINK: 2.4 GHz RF

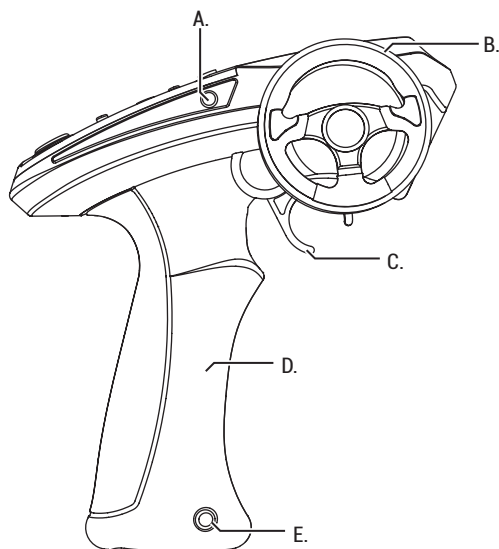
VIDEO LINK: Wi-Fi 802.11n (2.4 GHz)

MANY WAYS TO DRIVE

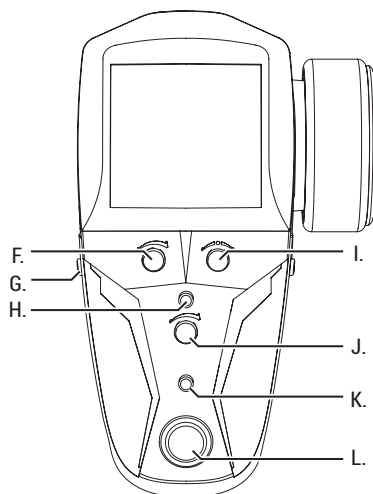
1. Standard RC Racing experience without the app and headset. Your Real Racer™ is ready to go as soon as the batteries are installed and both the Real Racer™ Car and Controller is powered on.
2. With the Real Racer™ App, experience the driver's view and access the various features of your Real Racer™.
3. For a fully immersive Driver's view RC experience - activate the Real Racer™ App, turn on the Headset function and strap on the FPV Headset.

DRIVING REAL RACER™

ABOUT THE CONTROLLER



SIDE VIEW

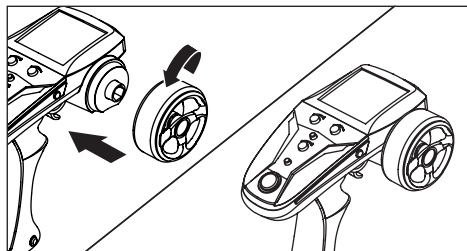


TOP VIEW

- A. Capture Video
- B. Steering Wheel
- C. Throttle
- D. Pistol Grip
- E. Battery Cartridge Release
- F. Steering Rate

- G. Take Picture
- H. Bind
- I. Steering Trim
- J. Throttle Rate
- K. AUX
- L. Power Button

ATTACHING THE STEERING WHEEL



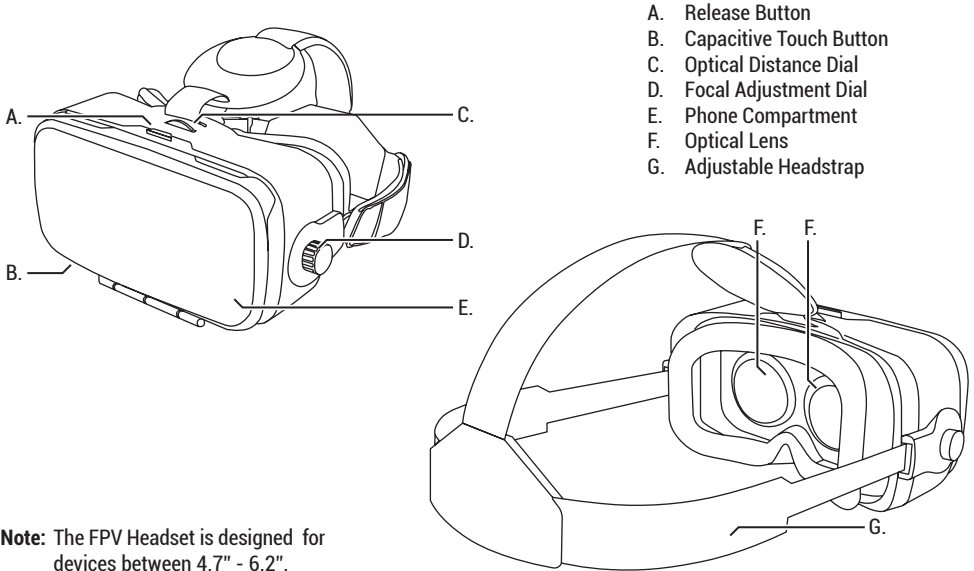
Place the hexagonal Steering Column (located on the underside of the Steering Wheel) against the hexagonal hole on the right side of the Controller and slowly rotate.

The Steering Wheel will automatically attach to the Controller once correct alignment has been achieved.

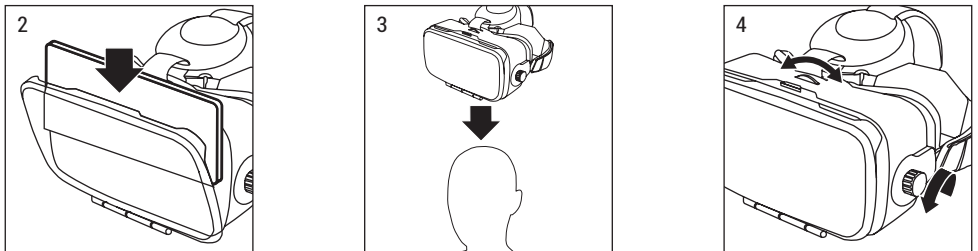
Lightly press Steering Wheel into place.

THE FPV HEADSET

ABOUT THE FPV HEADSET



WEARING THE FPV HEADSET



THE REAL RACER™ APP

DOWNLOADING & CONNECTING TO THE REAL RACER™ APP

Please check if your device is compatible with the app.

Download the REAL RACER™ App on your smart device. Follow the QR codes below for direct links or search for "KOBOTIX REAL RACER" on Google Play™ or the App Store®.



DEVICE LIST
kobotix.com/devices



Download on the
App Store



GET IT ON
Google Play

CONNECTING TO THE APP

To connect REAL RACER™:

1. Go to the Settings menu of your smartphone, open the Wi-Fi settings, then select "KOBOTIX_XXXXX" from the list of available networks.
2. Enter the default password "12345678" then press "join". You can change this password in the settings menu of the REAL RACER™ App.
3. Launch the REAL RACER™ App and follow the on-screen instructions.

SAFETY PRECAUTIONS:

- Keep hands, hair and loose clothing away from the wheels when power switch is turned ON.
- Keep all chemicals, small parts and anything electrical out of the reach of children.
- Keep moving parts clean.
- Keep parts dry.
- Always let parts cool after use before touching.
- Turn off controller and vehicle when not in use.
- Remove battery(s) from controller when not in use.
- Parental guidance is recommended.
- Users should keep strict accordance with the instruction manual while operating the product.
- The product must only be used with the recommended controller.

BATTERY SAFETY INFORMATION:

- New alkaline batteries are recommended for use in controller.
- Do not mix old and new batteries, different types of batteries [standard (Carbon-Zinc), Alkaline or rechargeable] or rechargeable batteries of different capacities.
- Replacement of batteries must be done by adults.
- Follow the polarity (+/-) diagram in the battery compartment.
- Remove exhausted batteries from the toy.
- Dispose of used batteries properly.
- DO NOT incinerate used batteries.
- DO NOT dispose of batteries in fire, as batteries may explode or leak.
- DO NOT recharge non-rechargeable batteries.
- DO NOT short-circuit the supply terminals.
- Remove batteries from the toy when it is not being used for a long period of time.

OVERHEATING:

The product may start to overheat if operating under extreme temperature conditions for a period of time.

The product will automatically turn OFF if an overheated condition is detected. Let the product cool down to room temperature before playing again.



WARNING! This product is not suitable for children under 3 years because of small parts - choking hazard.



Contains 1 x 3.7V/800mAh LiPo battery pack and requires 4 x 1.5V AAA batteries (not included). Batteries or battery packs must be recycled or disposed of properly. Protect the environment by not disposing of this product with household waste [2012/19/EU]. Check your local authority for recycling advice and facilities.

WARRANTY

Your purchase comes with a one-year limited warranty in the US. For consumers who are covered by consumer protection laws or regulations in their country of purchase or, if different, their country of residence, the benefits conferred by this warranty are in addition to all rights and remedies conveyed by such consumer protection laws and regulations. The warranty covers against manufacturing defects. It does not cover abuse, alteration, theft, loss, unauthorized and/or unreasonable use, or normal "wear and tear." During the warranty period, Kobotix® will make sole determination of a defect. If Kobotix® determines a defect, Kobotix®, at its sole discretion, will repair or replace the defective part or product with a comparable part. This does not affect your statutory rights. For full details, safety updates, or support, see kobotix.com/contact

Valid only in U.S.A.

FCC STATEMENT

This equipment has been tested and found to comply with the limits for a class B digital device, pursuant to part 15 of the FCC rules. These limits are designed to provide reasonable protection against harmful interference in a residential installation. This equipment generates, uses and can radiate radio frequency energy and, if not installed and used in accordance with the instructions, may cause harmful interference to radio communications.

However, there is no guarantee that interference will not occur in a particular installation. If this equipment does cause harmful interference to radio or television reception, which can be determined by turning the equipment off and on, the user is encouraged to try and correct the interference by one or more of the following measures:

- Reorient or relocate the receiving antenna
- Increase the separation between the equipment and receiver
- Connect the equipment into an outlet on a circuit different from that to which the receiver is connected
- Consult the dealer or experienced radio/TV technician for help

The KOBOTIX logo is presented in a bold, white, sans-serif font. It is contained within a black, horizontally-oriented rectangle that has a slight 3D effect, with a thin white border and a subtle shadow on the right side.

© 2018 KOBOTIX®. All rights reserved.

REAL RACER™ & KOBOTIX®, and the REAL RACER™ & KOBOTIX® logos are registered trademarks of KOBOTIX®
Unit 1303A, Henley Industrial Centre,
9-15 Bute Street, Mong Kok, Kowloon, Hong Kong.

App Store® is a service mark of Apple Inc.

Android™ and Google Play™ are trademarks of Google Inc.

Wi-Fi is a registered trademark of Wi-Fi Alliance®.

Made in China

FCC Caution.

This device complies with part 15 of the FCC Rules. Operation is subject to the following two conditions:

- (1) This device may not cause harmful interference, and
- (2) this device must accept any interference received, including interference that may cause undesired operation.

Any Changes or modifications not expressly approved by the party responsible for compliance could void the user's authority to operate the equipment.

Note: This equipment has been tested and found to comply with the limits for a Class B digital device, pursuant to part 15 of the FCC Rules. These limits are designed to provide reasonable protection against harmful interference in a residential installation. This equipment generates uses and can radiate radio frequency energy and, if not installed and used in accordance with the instructions, may cause harmful interference to radio communications. However, there is no guarantee that interference will not occur in a particular installation. If this equipment does cause harmful interference to radio or television reception, which can be determined by turning the equipment off and on, the user is encouraged to try to correct the interference by one or more of the following measures:

- Reorient or relocate the receiving antenna.
- Increase the separation between the equipment and receiver.
- Connect the equipment into an outlet on a circuit different from that to which the receiver is connected.
- Consult the dealer or an experienced radio/TV technician for help.

This equipment complies with FCC radiation exposure limits set forth for an uncontrolled environment. This equipment should be installed and operated with minimum distance 20cm between the radiator & your body.

IC Warning

This device complies with Industry Canada licence-exempt RSS standard(s). Operation is subject to the following two conditions:

- (1) This device may not cause interference, and
- (2) This device must accept any interference, including interference that may cause undesired operation of the device.

Le présent appareil est conforme aux CNR d'Industrie Canada applicables aux appareils radio exempts de licence. L'exploitation est autorisée aux deux conditions suivantes:

- (1) l'appareil ne doit pas produire de brouillage, et
- (2) l'utilisateur de l'appareil doit accepter tout brouillage radioélectrique subi, même si le brouillage est susceptible d'en compromettre le fonctionnement

This equipment complies with FCC radiation exposure limits set forth for an uncontrolled environment. This equipment should be installed and operated with minimum distance 20cm between the radiator & your body.

Cet équipement est conforme aux limites d'exposition aux radiations FCC définies pour un environnement non contrôlé. Cet équipement doit être installé et utilisé à une distance minimale de 20 cm entre le radiateur et votre corps.