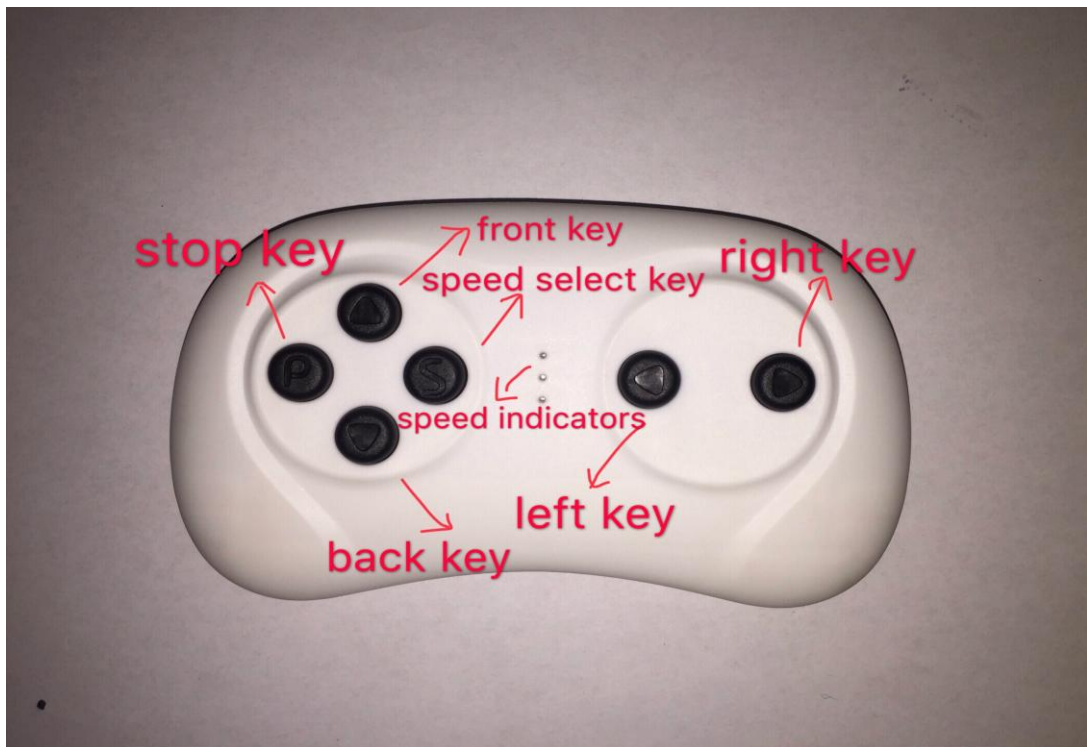
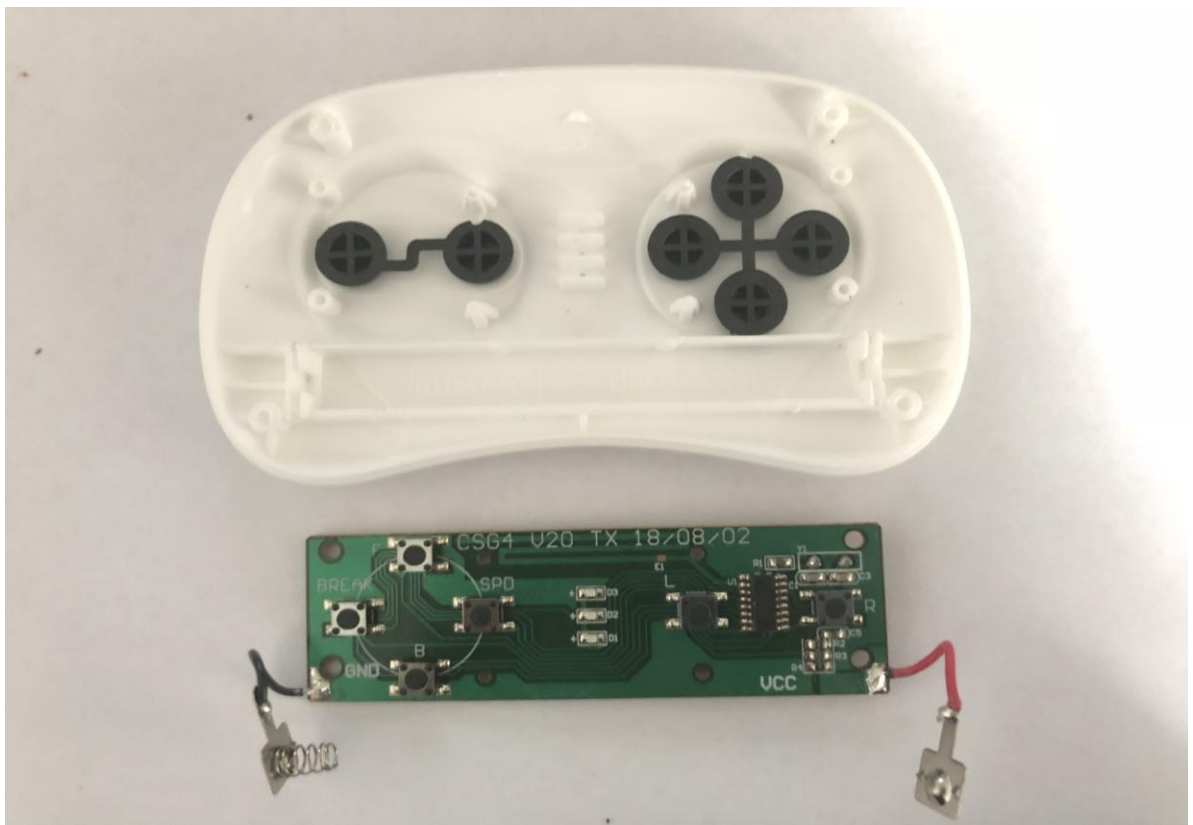


1. RF Remote control



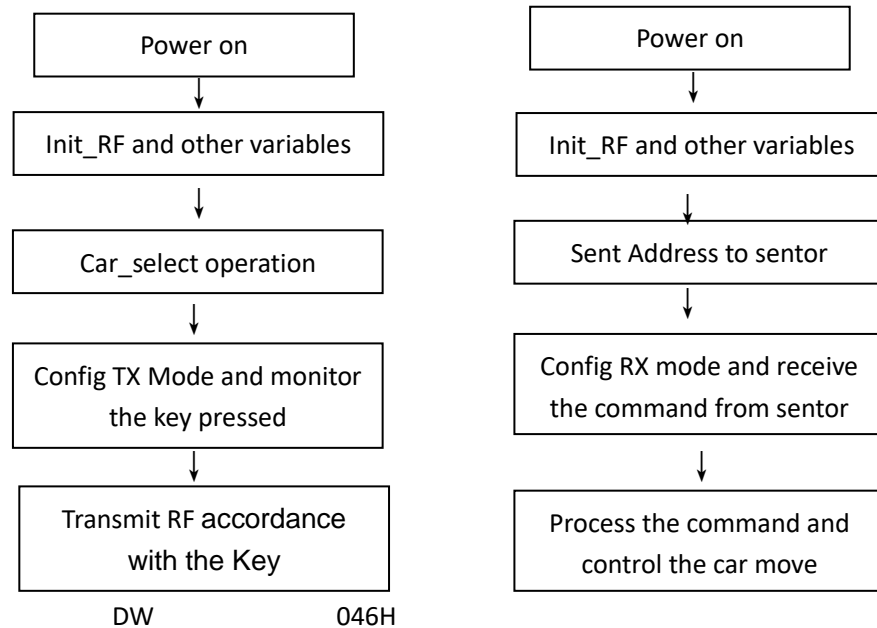


3 • Operation:

1. **step1.**Open the remote control battery cover, load two 7 cell, the three light-emitting diodes are in a flickering state on the panel.
2. **step2.**Open the baby carrier's power, the three light-emitting diodes are changed from flashing to two luminous tube are normally on, the code success, can be used.
3. **step3.**The remote controller has memory function after the code succeeds, Again to use, no code is necessary unless the battery is replaced,repeat t above 1-3 steps.
4. **step4.**The remote does not to use for a long time, will go into hibernation, the light-emitting diodes extinguish, Again to use, press

4. Program flow chart

1) sensor 2) Receiver



Changes or modifications not expressly approved by the party responsible for compliance could void the user's authority to operate the equipment

Note: This equipment has been tested and found to comply with the limits for a Class B digital device, pursuant to part 15 of the FCC Rules. These limits are designed to provide reasonable protection against harmful interference in a residential installation. This equipment generates, uses and can radiate radio frequency energy and, if not installed and used in accordance with the instructions, may cause harmful interference to radio communications. However, there is no guarantee that interference will not occur in a particular installation. If this equipment does cause harmful interference to radio or television reception, which can be determined by turning the equipment off and on, the user is encouraged to try to correct the interference by one or more of the following measures:

- Reorient or relocate the receiving antenna.
- Increase the separation between the equipment and receiver.
- Connect the equipment into an outlet on a circuit different from that to which the receiver is connected.
- Consult the dealer or an experienced radio/TV technician for help.

FCC Radiation Exposure Statement

The device has been evaluated to meet general Radiation exposure requirement. The antennas used for this transmitter must be installed to provide a separation distance of at least 5 mm from all persons and must not be co-located for operating in conjunction with any other antenna or transmitter.