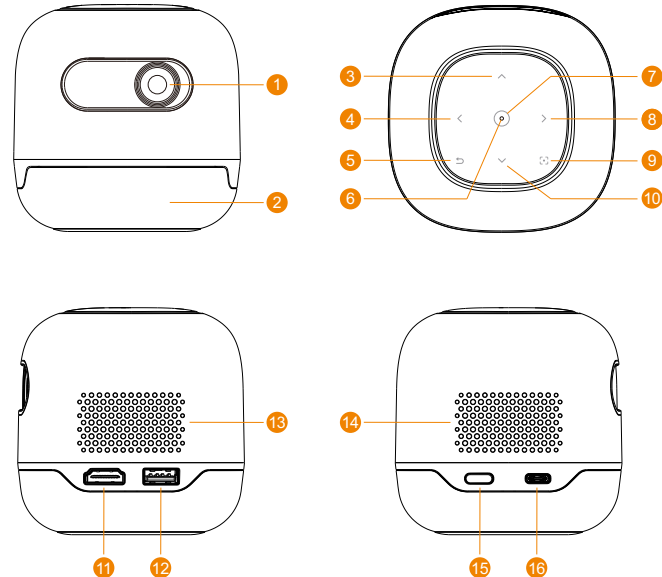


Mini Portable Projector

QUICK GUIDE

LOCATION OF PARTS AND CONTROLS



LOCATION OF PARTS AND CONTROLS

- 1 Projector Lens
- 2 Speakers
- 3 Up
- 4 Left
- 5 Return
- 6 LED indicator
- 7 Confirm
- 8 Right
- 9 Focus activation
- 10 Down
- 11 HDMI input
- 12 USB input
- 13 Air inlet
- 14 Air outlet
- 15 Power on/off
- 16 USB-C power input

THE PACKAGE INCLUDED

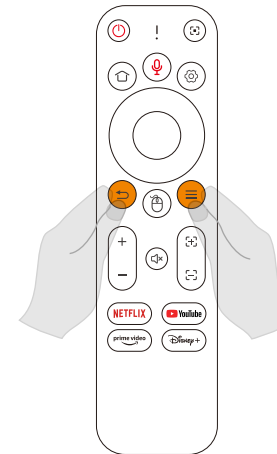
- 1, Projector
- 2, 15V/2A USB-C adapter
- 3, Adapter Plugs
- 4, Remote Control

REMOTE CONTROL

The bluetooth remote control must be paired with projector before using.

Step 1: Turned on the bluetooth of projector, Settings - Bluetooth - Add accessory
Step 2: Meanwhile press and hold the and three seconds, The indicator light on the remote control will start flashing. You will find the bluetooth remote (named Remote_XXXX) in the list.

Step 3: Connect with bluetooth remote.



- Power off
- Input Channel
- Home page
- Voice input
- Setting
- Return
- Air mouse mode
- Menu
- Volume+
- Volume-
- Focus+
- Focus-

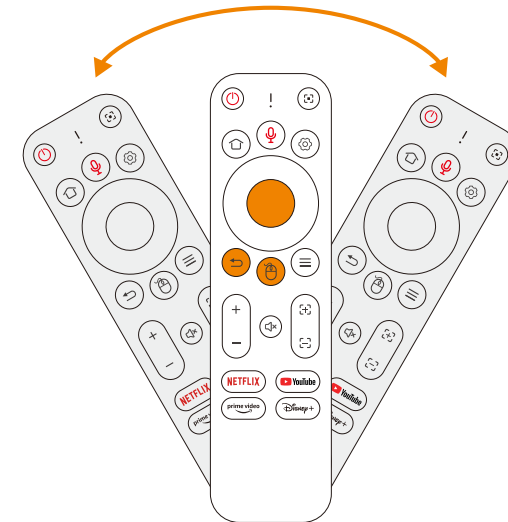
Air mouse mode

Tap the button to switch to Air mouse mode. Tap again to quit.

~Move the remote control to move the cursor of air mouse

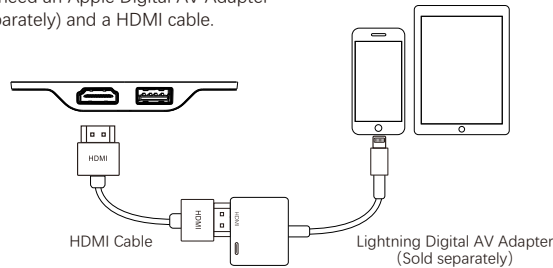
~Tap the OK button to confirm, Tap the Return button to return

~Hold the confirm button and move the remote control, to turn the page



HDMI Connect to iOS (lightning port)

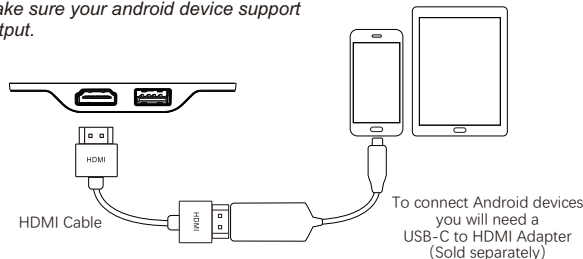
You will need an Apple Digital AV Adapter (sold separately) and a HDMI cable.



HDMI Connection to Android Devices

You will need an USB-C to HDMI Adapter (sold separately) and a HDMI cable.

Note: Make sure your android device support video output.

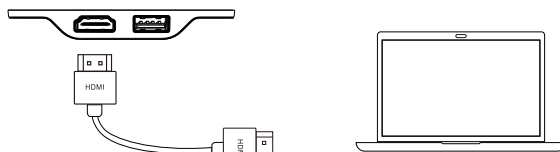


To connect Android devices you will need a USB-C to HDMI Adapter (Sold separately)



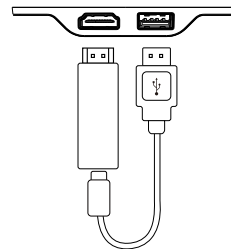
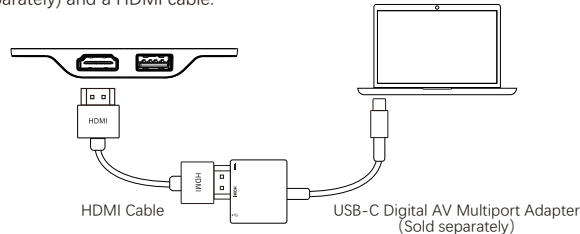
HDMI Connection to Laptop

Connect to the laptop directly with a HDMI type A cable, plug and play.



HDMI Connect to iOS (Type C port)

You will need USB-C Digital AV Multiport Adapter (sold separately) and a HDMI cable.



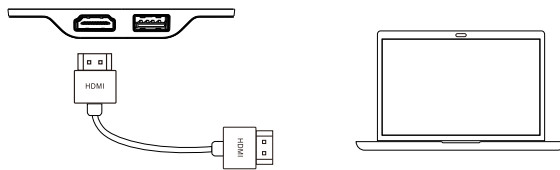
HDMI Connection to Streaming Sticks

Simply plug the FireTV, Roku TV, Chromecast or other streaming sticks to the projector. the projector can provide 5V/1A power to the stick by USB port.

Note: Some streaming sticks need their own power.

Connection to USB

Connect to the USB directly, plug and play.

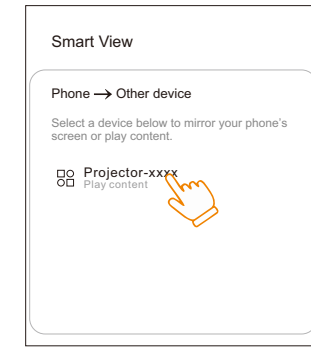
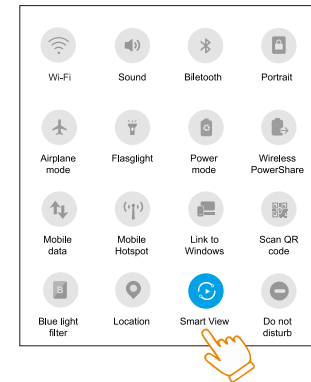


Wireless Connection to Android Devices

To connect your Android device to the projector by Smart view/Miracast

- Steps 1: Turn on the projector and enter the mirroring page for Android device.
- Steps 2: Open the drop-down menu of Android device, and active Smart view.
- Steps 3: Find the projector name and connect it.

Note: You may need to check with your android device manufacturer to verify that your Android device supports video out..(In Samsung device, this function named Smart view)

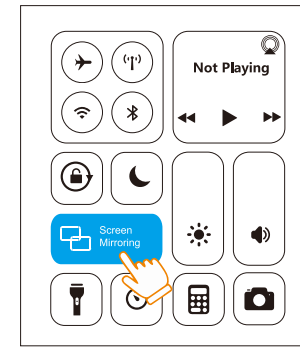
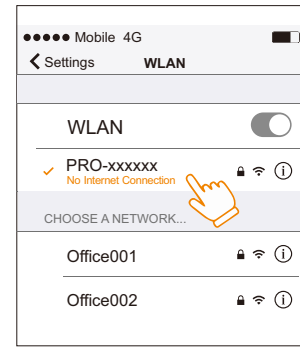


Wireless Connection to Apple Devices

To connect your Apple device to the projector by Screen mirroring/Airplay.

- Steps 1: Connect the projector and iPhone to the same Wifi router, or connect the projector to the hotspot of iPhone.
- Steps 2: Enter the mirroring page for iOS device in the projector.
- Steps 3: Open the drop-down menu of iPhone to active the screen mirroring, find the projector name and connect it.

Note: Some Streaming apps don't allow video output, such as Netflix...



FCC Warning

This device complies with Part 15 of the FCC Rules. Operation is subject to the following two conditions:

(1) This device may not cause harmful interference, and (2) this device must accept any interference received, including interference that may cause undesired operation.

NOTE 1: This equipment has been tested and found to comply with the limits for a Class B digital device, pursuant to part 15 of the FCC Rules. These limits are designed to provide reasonable protection against harmful interference in a residential installation. This equipment generates, uses and can radiate radio frequency energy and, if not installed and used in accordance with the instructions, may cause harmful interference to radio communications. However, there is no guarantee that interference will not occur in a particular installation. If this equipment does cause harmful interference to radio or television reception, which can be determined by turning the equipment off and on, the user is encouraged to try to correct the interference by one or more of the following measures:

- Reorient or relocate the receiving antenna.
- Increase the separation between the equipment and receiver.
- Connect the equipment into an outlet on a circuit different from that to which the receiver is connected.
- Consult the dealer or an experienced radio/TV technician for help.

NOTE 2: Any changes or modifications to this unit not expressly approved by the party responsible for compliance could void the user's authority to operate the equipment.

The device has been evaluated to meet general RF exposure requirement. The device can be used in portable exposure condition without restriction.