

Vsoon Smart Manufacture Co., Ltd.

Model No.: T92

Intelligent Voice Translator User Manual

Preface

Thank you very much for choosing this product. Please read the product instructions carefully before using it to avoid unnecessary damage to the machine.

According to the survey, 84% of travelers are longing for a deep experience of "boundless travel", but the inconvenience caused by poor language hinders more than 38% of them from traveling abroad.

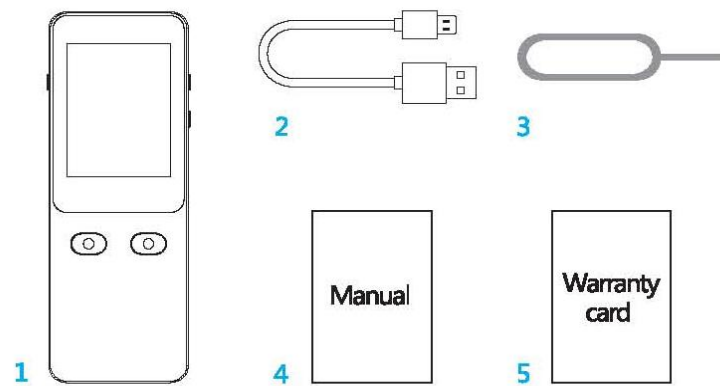
And a large number of users have traveled to more than 45 countries by virtue of intelligent voice translators, the destinations of traveling abroad: Japan, Thailand, Indonesia, Vietnam, France, Malaysia, Italy, Singapore, the United States, Switzerland, Germany, Philippine, the United Arab Emirates, Turkey, Austria and other countries. Intelligent voice translator has become an essential artifact for traveling, learning and working abroad.

The main functions of the product are as follows:

(1) Support real-time voice translation for face-to-face communication. Even though you are abroad, you can communicate with people without obstacles! Meet your needs in your life, work and study.

(2) Support English and more than 40 languages real time mutual translation (Chinese, Japanese, Korean, French, Russian, German, Italian, Portuguese, Thai, Indonesian, Greek, Czech, Norwegian, Swedish, Malay, Danish, Dutch, Turkish, Arab, Urals, Hebrew, Hindi, Croatian, Hungarian, Polish, Romanian, Slovak, Slovenian, Tamil, Bulgarian, Catalan, etc.), and Chinese and English offline real-time translation.

1. Product contents

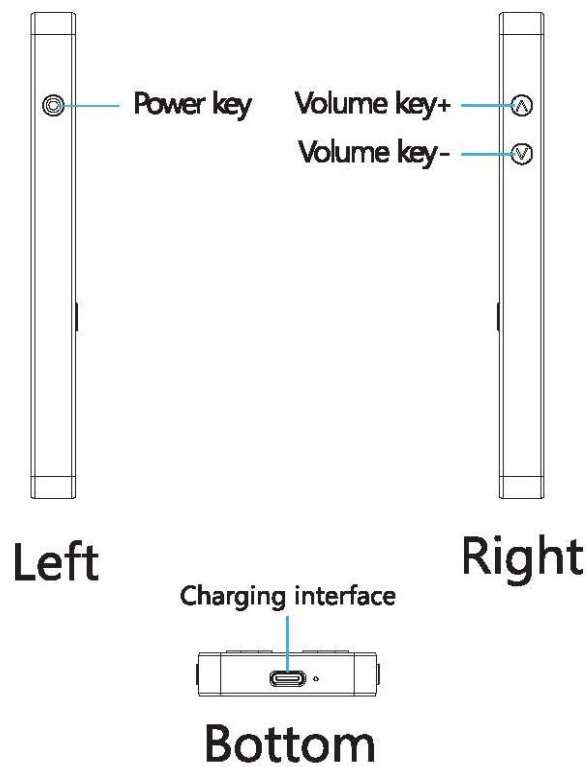


This product includes the following :

1. Translator; 2. Type-C data cable; 3. SIM card BisonFone (SIM card version only); 4. Manual; 5. Warranty card

2. Product panel






3. Operation guide


① Power on/off




1. Press the power button  for more than 2s, and the screen light up, the animation start and turn to be the translation interface. Then the device is turned on normally. Press the power button for more than 2s, the screen pops up the "Power off" / "Reboot", select the "Power off" the device will be turned off, select "Reboot", the device will reboot. Short press power button to lock or unlock the screen.

② Touch screen operation



2. After booting is successful, select the settings key . When the settings interface pop up, select WiFi, select the WiFi you want to connect, then enter the password. When WiFi is connected, press the back key to use the device normally.



3. Select languages, click A language on the left, select the language you speak in the drop-down menu. Then click B language on the right, select the language to be translated. When finish the setting, keep pressing A button, input voice in language A. Language A will be translated into language B. Keep pressing B button, language B will be translated into language A. Click the exchange key  in the screen, A-B languages will be exchanged..



4. Select camera, shoot the words to be translated, then click language A on the left, select the language of photos taken in the drop-down menu, then click the language B to select the target language to be translated in the drop-down menu. Click the translate button, you can get translation results.

4. Frequently asked questions

1. How many kinds of dialect translation are supported at present?

Answer : At present, Cantonese is supported. Will keep increasing more dialects later.

2. What is the translation effect of the translation device?

Answer: First of all, the accuracy of speech recognition from voice to text is up to 98%. Secondly, the level of text translation to other languages is equal to the level of CET-6. Thirdly, the translated text reading, namely speech synthesis can reach the level of general announcers.

3. Why it is better compared with mobile phone translation APP?

Answer: The accuracy rate is higher than that of mobile phone APP. Supports offline translation; Able to be used without network signal.

4. How many languages are supported?

A : Currently support 45 languages of the below countries, such as Britain, Japan, Korea, France, Spain, Russia, Germany, Italy, Portugal, Thailand, Vietnam, Indonesia, Greece, Czech Republic, Norway, Sweden, Malay, Denmark, Netherlands, Turkey, Arabia, Ural, Hebrew, India, Croatia, Hungary, Poland, Romania, Slovakia, Slovenia, Tamil, Bulgaria, Catalonia and so on. More languages are updating.

5. Does the device support to insert SIM card? Does it support to use local data plan?

Answer: Yes, you can buy the 4G model to insert SIM card, which supports WIFI network and 4G SIM card. When you go abroad, you can buy local data plan to access to the internet, or you can connect to the local WIFI for online translation.

6. Does the translator support photo translation?

Answer: Yes, you can buy the translator with camera function. We currently support online photo translation between Chinese and English, Chinese and Japan, Chinese and France. More languages will be supported soon later.

7. Is it convenient to operate?

Answer: You just need to press the translation button to speak. After you finish speaking, the translation device will automatically translate.

8. How long is the standby time?

Answer: With 2600mAh large capacity battery. The standby time is more than 3 days. Support continuous usage of 6 hours. Completely meet the needs of travel.

9. How many Languages are supported for offline translation?

A : Currently it supports Chinese-English offline translation. And later, offline translation between Chinese-Japanese, Chinese-Korean, Chinese-Russian will be supported.

10. Can the system be upgraded?

Answer: Yes, the translator adopts OTA mode which supports background update and online upgrade. When there is a new system needed to be upgraded, the background will automatically prompt for upgrade, which is convenient and fast.

5. Security warnings and instructions

Security warning

- Intelligent Voice Translator is a low-power, low-frequency equipment which is certified by the formal certification organization. Company, retailer or user can not change the battery, increase the power consumption, or change the designed features without permission.
- This product is not suitable for children under age 14 years old to use individually. Please use the device under the accompany of parents.
- Please ensure the signal of the device does not interfere the safety of flight or the legitimate communication. If interference is found, please stop using the device immediately until interference disappear.
- Failure to follow safety instructions may cause fire, electric shock, injury or damage to translation machines or other properties.
- Please read the usage safety instruction before device usage or maintenance.

Description of hazardous substances

In the design and production process, the product adopts environmental protection materials and technology which are easy to degrade, easy to recycle and with high utilization. The products follow the national standards and industry standards for the control of harmful substances and elements of electronic information products, and meet the environmental protection requirements of the "Measures for the Management of Pollution Control of Electronic Information Products"

Statement of rights

1. It is strictly forbidden to amend, reproduce, distribute or disseminate part or complete of the contents of this manual in any form without the written permission of the company.
2. Under no circumstances will the company undertake any responsibility to the loss of accidents, data and others caused directly or indirectly.
3. All pictures in this manual are for reference only. If there is any non-conformity, please refer to the actual device.
4. The operating system only supports official upgrade. If the user recovery the device with non-official system, the user should be responsible for the caused safety risk and losses.
5. Device update: you can check the current software version and check whether there is software update. The subsequent system update is completely free.



6. Warranty and maintenance

Warranty regulations

- 1、 The warranty period of this product is 6 months.
- 2、 During the warranty period, our company provide free maintenance for the breakdown of device under the circumstance of normal usage based on usage instructions.
- 3、 Accessories, vulnerable items and gifts are not covered by the warranty.

Within 6 months from the date of purchase
(Subject to the date of production)

Non-warranty regulations

Free maintenance won't be given under one of the following circumstances:

- Without warranty card;
- Without valid order number;
- The damage caused by incorrect operation, improper repair or modification;
- The damage caused by force majeure, such as fire, earthquakes, floods, lightning strikes and other natural disasters or abnormal voltage.
- Damage caused by environmental accidents, such as strong shaking, high temperature, soot, dust;
- Our company will not undertake the responsibility to the users' and distributors' special, accidental or indirect losses.

Our company reserves the rights to final interpretation to the content of the warranty card and the rights to change the contents of the warranty card without prior notice.

Warranty card

Product Model	
Serial No.	
Customer Name	
Customer Phone	
Customer Address	
Warranty Content	
After Sales	
Customer Signature	

Satisfied ☐

Not Satisfied ☐



FCC COMPLIANCE STATEMENT:

This device complies with part 15 of the FCC Rules. Operation is subject to the following two conditions:

(1) This device may not cause harmful interference, and (2) this device must accept any interference received, including interference that may cause undesired operation. Changes or modifications not expressly approved by the party responsible for compliance could void the user's authority to operate the equipment.

IC WARNING

This device contains licence-exempt transmitter(s)/receiver(s) that comply with Innovation, Science and Economic Development Canada's licence-exempt RSS(s). Operation is subject to the following two conditions:

(1) This device may not cause interference.

(2) This device must accept any interference, including interference that may cause undesired operation of the device

ADVERTENCIA IC

Cet appareil contient des émetteurs / récepteurs exemptés de licence conformes aux RSS (RSS) d'Innovation, Sciences et Développement économique Canada. Le fonctionnement est soumis aux deux conditions suivantes :

(1) Cet appareil ne doit pas causer d'interférences.

(2) Cet appareil doit accepter toutes les interférences, y compris celles susceptibles de provoquer un fonctionnement indésirable de l'appareil.