



# EyeCloud Cam

## User Manual

FCC ID: 2ARI8ECC1802

SSC-1801-W



**Hello! Thank you for purchasing EyeCloud Cam.**

# Contents

What's Inside .....	4
General Information .....	5
Ways to Place your EyeCloud Cam .....	6
Getting Started .....	7
Mount Your Camera .....	12
Adjust the Monitoring Range .....	14

## 1. What's Inside

- A. 1 x Eyecloud Cam
- B. 1 x magnetic mount
- C. 2 x stickers
- D. 1 x type-C USB cable
- E. 3 x mounting screws
- F. 1 x User Manual



A



B



C



D



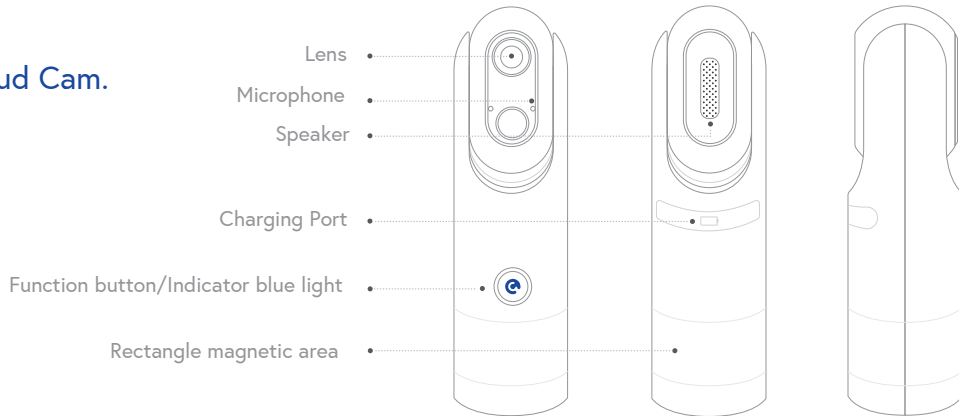
E



F

## 2. General Information

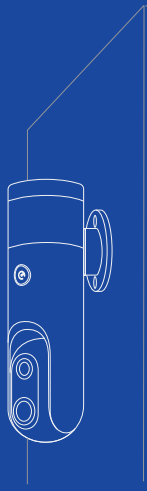
This is your Eyecloud Cam.



### 3. Ways to place your Eyecloud Cam



Horizontal surfaces



Vertical walls

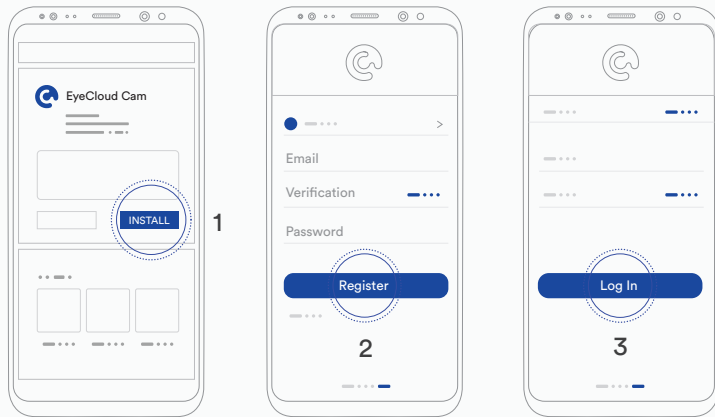


Roofs and ceilings

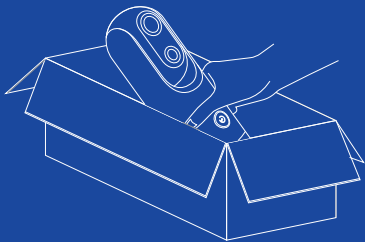
## 4. Getting Started

### 1. Get the app

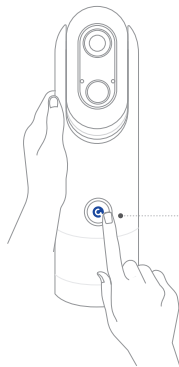
1. Download the app via App Store or Google Play
2. Register with your email address
3. Log in



## 2. Switch on Eyecloud Cam



1. Get the camera out of the box



**Blue Light On** - device is working



**Light Off** - charge your battery

2. Press the Function Button for 10 seconds to switch on the device

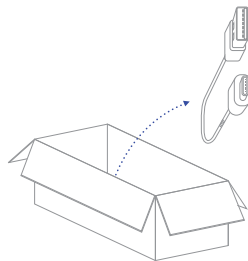


## To Charge your Camera:

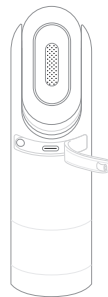
1. Get the USB Cable from the package
2. Open the rubber cover of the Data Interface on the Camera Body.
3. Connect the Camera and an Adaptor with the USB Cable.

### Charging Time

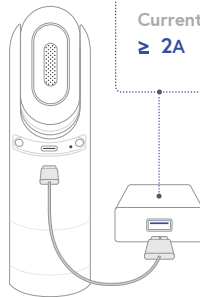
Around 5 hours • ..... • Fully charged  
At least 10 minutes • ..... • Power on



1



2

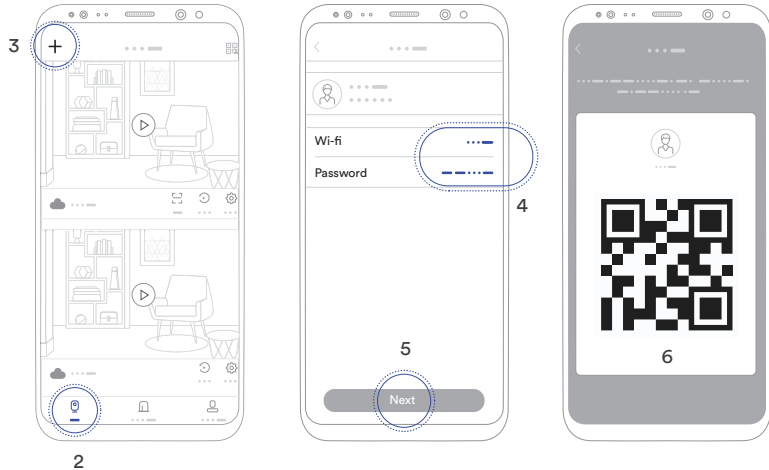


3

Voltage:  
 $4.75V \leq V \leq 5.25V$   
Current:  
 $\geq 2A$

### 3. Sync the device with the app

1. Open the Eyecloud Cam app
2. Click 'Camera'
3. Click '+' [upper left corner]
4. Enter your wi-fi network name and password
5. Click 'Next'
6. Here's your QR code





7. Scan QR code in a recommended 4 feet distance

8. Click 'Next' to configure your device

9. Wait a couple of seconds for the "Successful Connection" page to pop up

#### Blue Light Button on Camera:



Not Connected to Wifi



Connecting to Wifi



Connected to Wifi

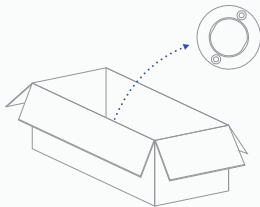
## 5. Mount Your Camera

### 1. Horizontal surfaces

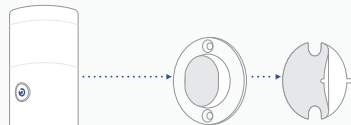
Place the camera on any horizontal surface. That's about that.



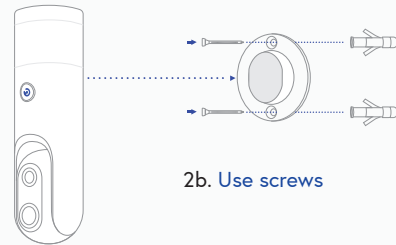
### 2. Vertical Walls



1. Get the magnetic mount out the box

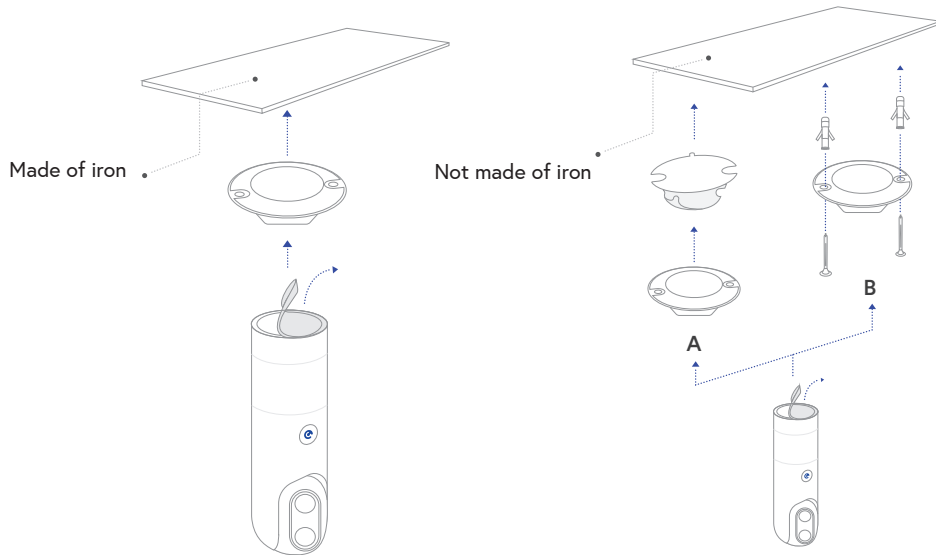


2a. Use stickers

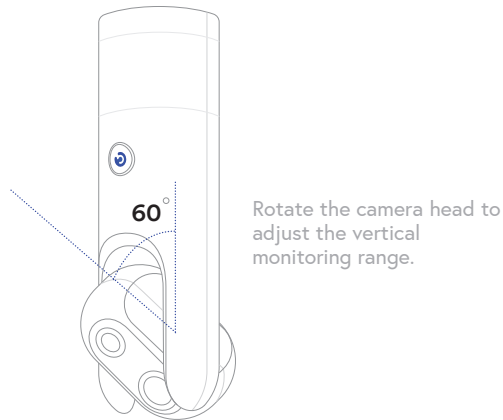
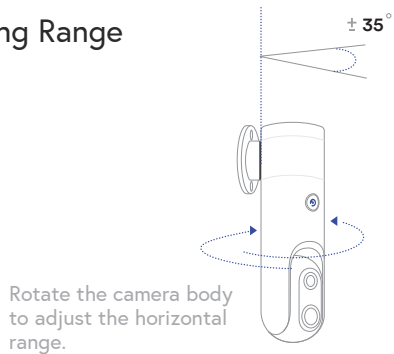


2b. Use screws

### 3. Roofs and Ceilings



## 6. Adjust the Monitoring Range



### FCC Caution.

This device complies with part 15 of the FCC Rules. Operation is subject to the following two conditions: (1) This device may not cause harmful interference, and (2) this device must accept any interference received, including interference that may cause undesired operation.

Any Changes or modifications not expressly approved by the party responsible for compliance could void the user's authority to operate the equipment.

Note: This equipment has been tested and found to comply with the limits for a Class B digital device, pursuant to part 15 of the FCC Rules. These limits are designed to provide reasonable protection against harmful interference in a residential installation. This equipment generates uses and can radiate radio frequency energy and, if not installed and used in accordance with the instructions, may cause harmful interference to radio communications. However, there is no guarantee that interference will not occur in a particular installation. If this equipment does cause harmful interference to radio or television reception, which can be determined by turning the equipment off and on, the user is encouraged to try to correct the interference by one or more of the following measures:

- Reorient or relocate the receiving antenna.
- Increase the separation between the equipment and receiver.
- Connect the equipment into an outlet on a circuit different from that to which the receiver is connected.
- Consult the dealer or an experienced radio/TV technician for help.

\* RF warning for Portable device:

The device has been evaluated to meet general RF exposure requirement. The device can be used in portable exposure condition without restriction.

