



REPORT No. : SZ18100025S01

TEST REPORT

APPLICANT : Hyco Genyong Technology Co., Ltd.
PRODUCT NAME : Smart Watch
MODEL NAME : W562
BRAND NAME : HYCO
FCC ID : 2ARHS-W562
STANDARD(S) : FCC 47CFR 2.1093
IEEE 1528-2013
RECEIPT DATE : 2018-10-16
TEST DATE : 2018-10-18 to 2018-11-15
ISSUE DATE : 2018-12-11

Edited by: Su Jinhai
Su Jinhai (Rapporteur)

Approved by: Peng Huarui
Peng Huarui (Supervisor)

NOTE: This document is issued by MORLAB, the test report shall not be reproduced except in full without prior written permission of the company. The test results apply only to the particular sample(s) tested and to the specific tests carried out which is available on request for validation and information confirmed at our website.



SHENZHEN MORLAB COMMUNICATIONS TECHNOLOGY Co., Ltd.
FL1-3, Building A, FeiYang Science Park, No.8 LongChang Road,
Block67, BaoAn District, ShenZhen , GuangDong Province, P. R. China

Tel: 86-755-36698555

Fax: 86-755-36698525

Http://www.morlab.cn

E-mail: service@morlab.cn





DIRECTORY

1 SAR RESULTS SUMMARY.....	4
2 TECHNICAL INFORMATION.....	5
2.1 APPLICANT AND MANUFACTURER INFORMATION.....	5
2.2 EQUIPMENT UNDER TEST (EUT) DESCRIPTION.....	5
2.3 ENVIRONMENT OF TEST SITE.....	5
3 INTRODUCTION.....	6
3.1 INTRODUCTION.....	6
3.2 SAR DEFINITION.....	6
4 RF EXPOSURE LIMITS.....	7
4.1 UNCONTROLLED ENVIRONMENT.....	7
4.2 CONTROLLED ENVIRONMENT.....	7
4.3 RF EXPOSURE LIMITS.....	7
4.4 APPLIED REFERENCE DOCUMENTS.....	8
5 SAR MEASUREMENT SYSTEM.....	9
5.1 E-FIELD PROBE.....	10
5.2 DATA ACQUISITION ELECTRONICS (DAE).....	11
5.3 ROBOT.....	12
5.4 MEASUREMENT SERVER.....	12
5.5 LIGHT BEAM UNIT.....	12
5.6 PHANTOM.....	13
5.7 DEVICE HOLDER.....	13
5.8 DATA STORAGE AND EVALUATION.....	14
5.9 TEST EQUIPMENT LIST.....	16
5.10 TISSUE SIMULATING LIQUIDS.....	17
6 SAR SYSTEM VERIFICATION.....	20
7 EUT TESTING POSITION.....	22
7.1 SAR EVALUATIONS NEAR THE MOUTH/JAW REGIONS OF THE SAM PHANTOM.....	22
7.2 LIMB-WORN ACCESSORY CONFIGURATIONS.....	22
8 MEASUREMENT PROCEDURES.....	23
8.1 SPATIAL PEAK SAR EVALUATION.....	23
8.2 POWER REFERENCE MEASUREMENT.....	24
8.3 AREA & ZOOM SCAN PROCEDURES.....	24
8.4 VOLUME SCAN PROCEDURES.....	25
8.5 SAR AVERAGED METHODS.....	25
8.6 POWER DRIFT MONITORING.....	25
9 CONDUCTED RF OUTPUT POWER.....	26
9.1 WLAN 2.4 GHZ BAND CONDUCTED POWER.....	26
9.2 WLAN 5.2 GHZ BAND CONDUCTED POWER.....	27
9.3 WLAN 5.3 GHZ BAND CONDUCTED POWER.....	28
9.4 WLAN 5.8 GHZ BAND CONDUCTED POWER.....	29
9.5 BLUETOOTH CONDUCTED POWER.....	30
10 EXPOSURE POSITIONS CONSIDERATION.....	31
10.1 EUT ANTENNA LOCATIONS.....	31
10.2 TEST POSITIONS CONSIDERATION.....	32
11 SAR TEST RESULTS SUMMARY.....	33
11.1 STANDALONE SAR DATA.....	33
11.2 SAR SIMULTANEOUS TRANSMISSION ANALYSIS.....	34
11.3 MEASUREMENT UNCERTAINTY.....	35
11.4 UNCERTAINTY EVALUATION FOR HANDSET SAR TEST.....	36
11.5 MEASUREMENT CONCLUSION.....	38

Annex A General Information



REPORT No. : SZ18100025S01

Annex B Test Setup Photos
Annex C Plots of System Performance Check
Annex D Plots of Maximum SAR Test Results
Annex E DASY Calibration Certificate

Version	Date	Description	Test Engineer
1.0	2018-12-11	Original	Su Jinhai



1 SAR Results Summary

The maximum results of Specific Absorption Rate (SAR) found during test as bellows:

Frequency Band	Highest SAR Summary	
	Next to mouth 1g (W/kg) (Separation 10mm)	Wrist-worn 10g (W/kg) (Separation 0mm)
2.4GHz WLAN	0.115	0.576
5GHz WLAN	0.083	0.276

Max Scaled SAR	Next to mouth:	0.115 W/Kg	Limit: 1.6 W/Kg
	Wrist-worn:	0.576 W/Kg	Limit: 4.0 W/Kg

Note:

1. The highest simultaneous transmission is scalar summation of Reported standalone SAR per FCCKDB 690783 D01 v01r03, and scalar SAR summation of all possible simultaneous transmission scenarios are < 1.6W/kg(for next to mouth mode) or < 4.0W/kg(for wrist-worn mode).
2. This device is compliance with Specific Absorption Rate (SAR) for general population/uncontrolled exposure limits specified in FCC 47 CFR part 2 (2.1093) and ANSI/IEEE C95.1-2005, and had been tested in accordance with the measurement methods and procedures specified in IEEE 1528-2013.



2 Technical Information

Note: Provide by manufacturer.

2.1 Applicant and Manufacturer Information

Applicant:	Hyco Genyong Technology Co., Ltd.
Applicant Address:	Room 105, 1/F, Building B, No.999 of Huaxu Road, Qingpu District, Shanghai, CN
Manufacturer:	HYCO Information Technology Co., Ltd
Manufacturer Address:	Room 3A07, Tower B, North Zone, No.999, Huaxu Road, Qingpu District, Shanghai

2.2 Equipment Under Test (EUT) Description

EUT Type:	Smart Watch	
Hardware Version:	W562_V1.2	
Software Version:	W562-FL_6.0_20180625_1408	
Operation Frequency:	Bluetooth: 2402 MHz ~ 2480 MHz Wi-Fi: 802.11b/g/n-HT20: 2412MHz ~ 2462 MHz 802.11n-HT40 :2422MHz~2452MHz 802.11a/n: 5180MHz~5240MHz,5260MHz~5320MHz 802.11a/n: 5745MHz~5825MHz	
Modulation technology:	Bluetooth: GFSK/ π /4DQPSK/8DPSK Wi-Fi: 802.11b: DSSS, 802.11a/g/n: OFDM	
Antenna Type:	FPC Antenna	
Battery:	Model Name:	964655P
	Power Rating:	3600mAh 3.8V

2.3 Environment of Test Site

Temperature:	18°C ~25 °C
Humidity:	35%~75% RH
Atmospheric Pressure:	1010 mbar



3 Introduction

3.1 Introduction

SAR is related to the rate at which energy is absorbed per unit mass in an object exposed to a radio field. The SAR distribution in a biological body is complicated and is usually carried out by experimental techniques or numerical modeling. The standard recommends limits for two tiers of groups, occupational/controlled and general population/uncontrolled, based on a person's awareness and ability to exercise control over his or her exposure. In general, occupational/controlled exposure limits are higher than the limits for general population/uncontrolled.

3.2 SAR Definition

The SAR definition is the time derivative (rate) of the incremental energy (dW) absorbed by (dissipated in) an incremental mass (dm) contained in a volume element (dv) of a given density (ρ). The equation description is as below:

$$SAR = \frac{d}{dt} \left(\frac{dU}{dm} \right) = \frac{d}{dt} \left(\frac{dU}{\rho dv} \right)$$

SAR is expressed in units of Watts per kilogram (W/kg)

SAR measurement can be either related to the temperature elevation in tissue by

$$SAR = C \left(\frac{\delta T}{\delta t} \right)$$

Where: C is the specific heat capacity, δT is the temperature rise and δt is the exposure duration, or related to the electrical field in the tissue by

$$SAR = \frac{\sigma \cdot E^2}{\rho}$$

Where: σ is the conductivity of the tissue, ρ is the mass density of the tissue and E is the RMS electrical field strength. However for evaluating SAR of low power transmitter, electrical field measurement is typically applied.

4 RF Exposure Limits

4.1 Uncontrolled Environment

Uncontrolled Environments are defined as locations where there is the exposure of individuals who have no knowledge or control of their exposure. The general population/uncontrolled exposure limits are applicable to situations in which the general public may be exposed or in which persons who are exposed as a consequence of their employment may not be made fully aware of the potential for exposure or cannot exercise control over their exposure. Members of the general public would come under this category when exposure is not employment-related; for example, in the case of a wireless transmitter that exposes persons in its vicinity.

4.2 Controlled Environment

Controlled Environments are defined as locations where there is exposure that may be incurred by persons who are aware of the potential for exposure, (i.e. as a result of employment or occupation). In general, occupational/controlled exposure limits are applicable to situations in which persons are exposed as a consequence of their employment, who have been made fully aware of the potential for exposure and can exercise control over their exposure. This exposure category is also applicable when the exposure is of a transient nature due to incidental passage through a location where the exposure levels may be higher than the general population/uncontrolled limits, but the exposed person is fully aware of the potential for exposure and can exercise control over his or her exposure by leaving the area or by some other appropriate means.

4.3 RF Exposure Limits

SAR Human Exposure Specified in ANSI/IEEE C95.1-1992 and Health Canada Safety Code 6

HUMAN EXPOSURE LIMITS		
	UNCONTROLLED ENVIRONMENT <i>General Population</i> (W/kg) or (mW/g)	CONTROLLED ENVIRONMENT <i>Occupational</i> (W/kg) or (mW/g)
SPATIAL PEAK SAR Brain	1.6	8.0
SPATIAL AVERAGE SAR Whole Body	0.08	0.4
SPATIAL PEAK SAR Hands, Feet, Ankles, Wrists	4.0	20

Note:

1. The Spatial Peak value of the SAR averaged over any 1 gram of tissue (defined as a tissue volume in the shape of a cube) and over the appropriate averaging time.
2. The Spatial Average value of the SAR averaged over the whole body.
3. The Spatial Peak value of the SAR averaged over any 10 grams of tissue (defined as a tissue volume in the shape of a cube) and over the appropriate averaging time.



4.4 Applied Reference Documents

Leading reference documents for testing:

No.	Identity	Document Title
1	47 CFR§2.1093	Radio Frequency Radiation Exposure Evaluation: Portable Devices
2	IEEE 1528-2013	IEEE Recommended Practice for Determining the Peak Spatial-Average Specific Absorption Rate (SAR) in the Human Head from Wireless Communications Devices: Measurement Techniques
3	KDB 447498 D01v06	General RF Exposure Guidance
4	KDB 248227 D01v02r02	SAR Measurement Procedures for 802.11 Transmitters
5	KDB 865664 D01v01r04	SAR Measurement 100 MHz to 6 GHz
6	KDB 865664 D02v01r02	RF Exposure Reporting
7	KDB 941225 D06v02r01	SAR Evaluation Procedures For Portable Devices With Wireless Router Capabilities

5 SAR Measurement System

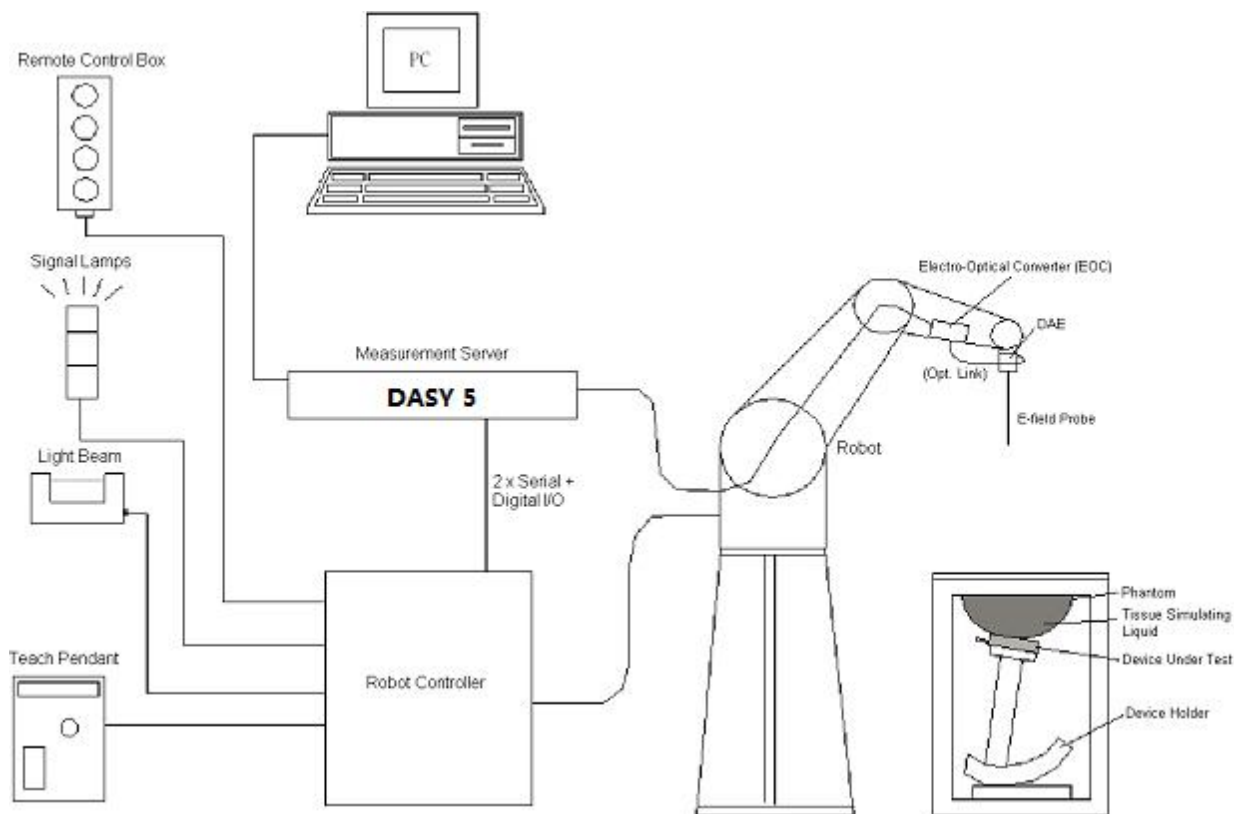


Fig.5.1 SPEAG DASY System Configurations

The DASY system for performance compliance tests is illustrated above graphically. This system consists of the following items:

- A standard high precision 6-axis robot with controller, a teach pendant and software
- A data acquisition electronic (DAE) attached to the robot arm extension
- A dosimetric probe equipped with an optical surface detector system
- The electro-optical converter (EOC) performs the conversion between optical and electrical signals
- A measurement server performs the time critical tasks such as signal filtering, control of the robot operation and fast movement interrupts.
- A probe alignment unit which improves the accuracy of the probe positioning
- A computer operating Windows XP
- DASY software
- Remote control with teach pendant and additional circuitry for robot safety such as warning lamps, etc.
- The SAM twin phantom
- A device holder
- Tissue simulating liquid
- Dipole for evaluating the proper functioning of the system

Component details are described in the following sub-sections.

5.1 E-Field Probe

The SAR measurement is conducted with the dosimetric probe (manufactured by SPEAG). The probe is specially designed and calibrated for use in liquid with high permittivity. The dosimetric probe has special calibration in liquid at different frequency. This probe has a built in optical surface detection system to prevent from collision with phantom.

➤ E-Field Probe Specification <EX3DV3 Probe>

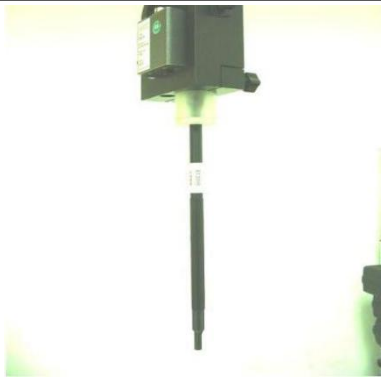
Construction	Symmetrical design with triangular core Built-in optical fiber for surface detection system. Built-in shielding against static charges. PEEK enclosure material (resistant to organic solvents, e.g., DGBE)	
Frequency	10 MHz to 3 GHz; Linearity: ± 0.2 dB	
Directivity	± 0.2 dB in HSL (rotation around probe axis) ± 0.4 dB in HSL (rotation normal to probe axis)	
Dynamic Range	5 μ W/g to 100 mW/g; Linearity: ± 0.2 dB	
Dimensions	Overall length: 330 mm (Tip: 16 mm) Tip diameter: 6.8 mm (Body: 12 mm) Distance from probe tip to dipole centers: 2.7 mm	

Fig 5.2 Photo of ES3DV3

<EX3DV4 Probe>


Construction	Symmetrical design with triangular core Built-in shielding against static charges PEEK enclosure material (resistant to organic solvents, e.g., DGBE)	
Frequency	10 MHz to 6 GHz; Linearity: ± 0.2 dB	
Directivity	± 0.3 dB in HSL (rotation around probe axis) ± 0.5 dB in tissue material (rotation normal to probe axis)	
Dynamic Range	10 μ W/g to 100 mW/g; Linearity: ± 0.2 dB	
Dimensions	Overall length: 330 mm (Tip: 20 mm) Tip diameter: 2.5 mm (Body: 12 mm) Typical distance from probe tip to dipole centers: 1 mm	

Fig 5.3 Photo of EX3DV4

➤ E-Field Probe Calibration

Each probe needs to be calibrated according to a dosimetric assessment procedure with accuracy better than $\pm 10\%$. The spherical isotropy shall be evaluated and within ± 0.25 dB. The sensitivity parameters (Norm X, Norm Y and Norm Z), the diode compression parameter (DCP) and the conversion factor (ConvF) of the probe are tested. The calibration data can be referred to appendix E of this report.

5.2 Data Acquisition Electronics (DAE)

The Data acquisition electronics (DAE) consists of a highly sensitive electrometer-grade preamplifier with auto-zeroing, a channel and gain-switching multiplexer, a fast 16 bit AD-converter and a command decoder and control logic unit. Transmission to the measurement server is accomplished through an optical downlink for data and status information as well as an optical uplink for commands and the clock. The input impedance of the DAE is 200 MOhm; the inputs are symmetrical and floating. Common mode rejection is above 80 dB.

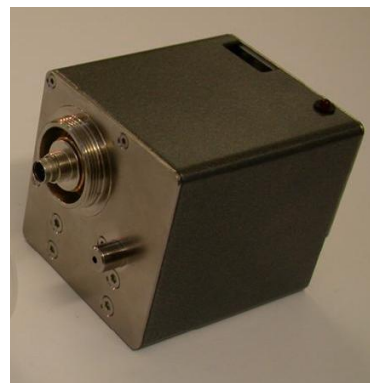


Fig. 5.4 Photo of DAE

5.3 Robot

The SPEAG DASY system uses the high precision robots (DASY5: TX60XL) type from Stäubli SA (France). For the 6-axis controller system, the robot controller version (DASY5: CS8c) from Stäubli is used. The Stäubli robot series have many features that are important for our application:

- High precision (repeatability 0.02 mm)
- High reliability (industrial design)
- Low maintenance costs (virtually maintenance free due to direct drive gears; nobelt drives)
- Jerk-free straight movements
- Low ELF interference (motor control fields shielded via the closed metallic construction shields)



Fig. 5.5 Photo of Robot

5.4 Measurement Server

The measurement server is based on a PC/104 CPU board with CPU (DASY 5: 400MHz, Intel Celeron), chip-disk (DASY5: 128 MB), RAM (DASY5: 128 MB). The necessary circuits for communication with the DAE electronic box, as well as the 16 bit AD converter system for optical detection and digital I/O interface are contained on the DASY I/O board, which is directly connected to the PC/104 bus of the CPU board. The measurement server performs all the real-time data evaluation for field measurements and surface detection, controls robot movements and handles safety operations.



Fig. 5.6 Photo of Server for DASY5

5.5 Light Beam Unit

The light beam switch allows automatic "tooling" of the probe. During the process, the actual position of the probe tip with respect to the robot arm is measured, as well as the probe length and the horizontal probe offset. The software then corrects all movements, such that the robot coordinates are valid for the probe tip.

The repeatability of this process is better than 0.1 mm. If a position has been taught with an aligned probe, the same position will be reached with another aligned probe within 0.1 mm, even if the other probe has different dimensions. During probe rotations, the probe tip will keep its actual position.



Fig. 5.7 Photo of Light Beam

5.6 Phantom

<SAM Twin Phantom>

Shell Thickness	2 ± 0.2 mm (sagging: <1%) Center ear point: 6 ± 0.2 mm
Filling Volume Dimensions	Approx. 25 liters Length: 1000 mm; Width: 500 mm; Height: adjustable feet
Measurement Areas	Left Head, Right Head, Flat phantom



Fig. 5.8Photo of SAM Phantom

The bottom plate contains three pair of bolts for locking the device holder. The device holder positions are adjusted to the standard measurement positions in the three sections. A white cover is provided to tap the phantom during off-periods to prevent water evaporation and changes in the liquid parameters. On the phantom top, three reference markers are provided to identify the phantom position with respect to the robot.

5.7 Device Holder

<Device Holder for SAM Twin Phantom>

The SAR in the phantom is approximately inversely proportional to the square of the distance between the source and the liquid surface. For a source at 5 mm distance, a positioning uncertainty of ±0.5 mm would produce a SAR uncertainty of ± 20 %. Accurate device positioning is therefore crucial for accurate and repeatable measurements. The positions in which the devices must be measured are defined by the standards.

The DASY device holder is designed to cope with different positions given in the standard. It has two scales for the device rotation (with respect to the body axis) and the device inclination (with respect to the line between the ear reference points). The rotation center for both scales is the ear reference point (ERP).

Thus the device needs no repositioning when changing the angles.

The DASY device holder is constructed of low-loss POM material having the following dielectric parameters: relative permittivity $\epsilon = 3$ and loss tangent $\delta = 0.02$. The amount of dielectric material has been reduced in the closest vicinity of the device, since measurements have suggested that the influence of the clamp on the test results could thus be lowered.

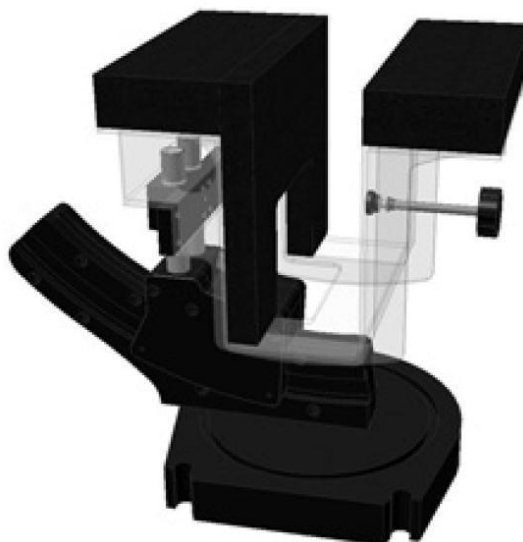


Fig. 5.9Photo of Device Holder

<Laptop Extension Kit>

The extension is lightweight and made of POM, acrylic glass and foam. It fits easily on the upper part of the mounting device in place of the phone positioned. The extension is fully compatible with the SAM Twin and ELI phantoms.

Fig 5.10 Laptop Extension Kit



5.8 Data storage and Evaluation

➤ Data Storage

The DASY software stores the assessed data from the data acquisition electronics as raw data (in microvolt readings from the probe sensors), together with all the necessary software parameters for the data evaluation (probe calibration data, liquid parameters and device frequency and modulation data) in measurement files. The post-processing software evaluates the desired unit and format for output each time the data is visualized or exported. This allows verifications of the complete software setup even after the measurement and allows correction of erroneous parameter settings. For example, if a measurement has been performed with an incorrect crest factor parameter in the device setup, the parameter can be corrected afterwards and the data can be reevaluated.

The measured data can be visualized or exported in different units or formats, depending on the selected probe type (e.g., [V/m], [mW/g]). Some of these units are not available in certain situations or give meaningless results, e.g., a SAR-output in a non-lose media, will always be zero. Raw data can also be exported to perform the evaluation with other software packages.

➤ Data Evaluation

The DASY post-processing software (SEMCAD) automatically executes the following procedures to calculate the field units from the microvolt readings at the probe connector. The parameters used in the evaluation are stored in the configuration modules of the software:

Probe Parameters:	- Sensitivity	Norm _i , a _{i0} , a _{i1} , a _{i2}
	- Conversion	ConvF _i
	- Diode compression point	dcp _i
Device Parameters:	- Frequency	f
	- Crest	cf
Media Parameters:	- Conductivity	σ
	- Density	ρ



These parameters must be set correctly in the software. They can be found in the component documents or they can be imported into the software from the configuration files issued for the DASY components. In the direct measuring mode of the multi-meter option, the parameters of the actual system setup are used. In the scan visualization and export modes, the parameters stored in the corresponding document files are used.

The first step of the evaluation is a linearization of the filtered input signal to account for the compression characteristics of the detector diode. The compensation depends on the input signal, the diode type and the DC-transmission factor from the diode to the evaluation electronics. If the exciting field is pulsed, the crest factor of the signal must be known to correctly compensate for peak power.

The formula for each channel can be given as:

$$V_i = U_i + U_i^2 \cdot \frac{cf}{dcp_i}$$

With V_i = compensated signal of channel i, (i = x, y, z)

U_i = input signal of channel i, (i = x, y, z)

cf = crest factor of exciting field (DASY parameter)

dcp_i = diode compression point (DASY parameter)

From the compensated input signals, the primary field data for each channel can be evaluated:

$$\text{E- Field Probes: } E_i = \sqrt{\frac{V_i}{\text{Norm}_i \cdot \text{ConvF}}}$$

$$\text{H-Field Probes: } H_i = \sqrt{V_i} \cdot \frac{a_{i0} + a_{i1}f + a_{i2}f^2}{f}$$

With V_i = compensated signal of channel i, (i = x, y, z)

Norm_i = sensor sensitivity of channel i, (i = x, y, z), $\mu\text{V}/(\text{V/m})^2$

ConvF = sensitivity enhancement in solution

a_{ij} = sensor sensitivity factors for H-field probes

f = carrier frequency (GHz)

E_i = electric field strength of channel i in V/m

H_i = magnetic field strength of channel i in A/m

The RSS value of the field components gives the total field strength (Hermitian magnitude):

$$E_{\text{tot}} = \sqrt{E_x^2 + E_y^2 + E_z^2}$$

The primary field data are used to calculate the derived field units.

$$\text{SAR} = E_{\text{tot}}^2 \cdot \frac{\sigma}{\rho \cdot 1000}$$

With

SAR = local specific absorption rate in mW/g

E_{tot} = total field strength in V/m

σ = conductivity in (mho/m) or (Siemens/m)

ρ = equipment tissue density in g/cm³

Note that the density is set to 1, to account for actual head tissue density rather than the density of the tissue simulating liquid.



5.9 Test Equipment List

Manufacturer	Name of Equipment	Type/Model	Serial Number	Calibration	
				Last Cal.	Due Date
SPEAG	2450MHz System Validation Kit	D2450V2	997	2018.06.26	2019.06.25
SPEAG	5000MHz System Validation Kit	D5GHzV2	1176	2018.11.06	2019.11.05
SPEAG	Dosimetric E-Field Probe	ES3DV3	3154	2017.10.30	2018.10.29
SPEAG	Dosimetric E-Field Probe	EX3DV4	3823	2018.11.12	2019.11.11
SPEAG	Data Acquisition Electronics	DAE4	1516	2018.07.14	2019.07.13
SPEAG	SAM Twin Phantom 1	QD 000 P40 CB	TP-1471	NCR	NCR
SPEAG	SAM Twin Phantom 2	QD 000 P40 CB	TP-1464	NCR	NCR
SPEAG	Phone Positioner	N/A	N/A	NCR	NCR
R&S	Network Emulator	CMW500	124534	2018.04.17	2019.04.16
Agilent	Network Analyzer	E5071B	MY42404762	2018.04.17	2019.04.16
mini-circuits	Amplifier	ZHL-42W+	608501717	NCR	NCR
mini-circuits	Amplifier	ZVE-8G+	754401735	NCR	NCR
Agilent	Signal Generator	SMP_02	N/A	2018.04.17	2019.04.16
Agilent	Signal Generator	N5182B	MY53050509	2018.04.17	2019.04.16
Agilent	Power Sensor	N8482A	MY41091706	2018.04.17	2019.04.16
Agilent	Power Meter	E4416A	MY45102093	2018.04.17	2019.04.16
Anritsu	Power Sensor	MA2411B	N/A	2018.04.17	2019.04.16
R&S	Power Meter	NRVD	101066	2018.04.17	2019.04.16
MCL	Attenuation1	351-218-010	N/A	NA	NA
THERMOMETER	Thermo meter	DC-803	N/A	2017.12.08	2018.12.07
N/A	Tissue Simulating Liquids	Head 2300-5800MHz Body 2300-5800MHz	N/A	24H	

Note:

1. The calibration certificate of DASY can be referred to appendix C of this report.
2. Referring to KDB 865664 D01v01r04, the dipole calibration interval can be extended to 3 years with justification. The dipoles are also not physically damaged, or repaired during the interval.
3. The Insertion Loss calibration of Dual Directional Coupler and Attenuator were characterized via the network analyzer and compensated during system check.
4. The dielectric probe kit was calibrated via the network analyzer, with the specified procedure (calibrated in pure water) and calibration kit (standard) short circuit, before the dielectric measurement. The specific procedure and calibration kit are provided by Speag.
5. In system check we need to monitor the level on the power meter, and adjust the power amplifier level to have precise power level to the dipole; the measured SAR will be normalized to 1W input power according to the ratio of 1W to the input power to the dipole. For system check, the calibration of the power amplifier is deemed not critically required for correct measurement; the power meter is critical and we do have calibration for it
6. Attenuator insertion loss is calibrated by the network Analyzer, which the calibration is valid, before system check.

7. N.C.R means No Calibration Requirement.

5.10 Tissue Simulating Liquids

For the measurement of the field distribution inside the SAM phantom with DASY, the phantom must be filled with around 25 liters of homogeneous body tissue simulating liquid. For head SAR testing, the liquid height from the ear reference point (ERP) of the phantom to the liquid top surface is larger than 15 cm, which is shown in Fig. 5.11, for body SAR testing, the liquid height from the center of the flat phantom to liquid top surface is larger than 15 cm, which is shown in Fig. 5.12.

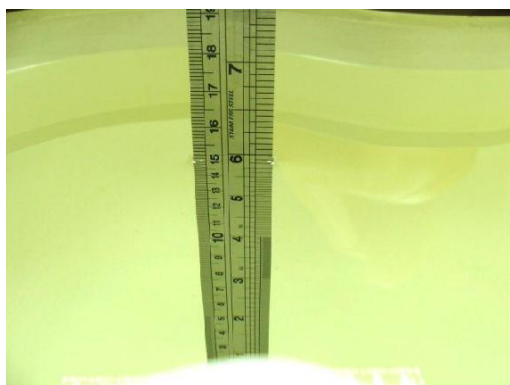


Fig 5.11 Photo of Liquid Height for Head SAR

Fig 5.12 Photo of Liquid Height for Body SAR

The following table gives the recipes for tissue simulating liquids

Frequency (MHz)	Water (%)	Sugar (%)	Cellulose (%)	Salt (%)	Preventol (%)	DGBE (%)	Conductivity (σ)	Permittivity (ϵ_r)
Head								
750	41.1	57.0	0.2	1.4	0.2	0	0.89	41.9
835	40.3	57.9	0.2	1.4	0.2	0	0.90	41.5
1800, 1900, 2000	55.2	0	0	0.3	0	44.5	1.40	40.0
2450	55.0	0	0	0	0	45.0	1.80	39.2
2600	54.8	0	0	0.1	0	45.1	1.96	39.0
Body								
750	51.7	47.2	0	0.9	0.1	0	0.96	55.5
835	50.8	48.2	0	0.9	0.1	0	0.97	55.2
1800, 1900, 2000	70.2	0	0	0.4	0	29.4	1.52	53.3
2450	68.6	0	0	0	0	31.4	1.96	52.7
2600	68.1	0	0	0.1	0	31.8	2.16	52.5

Simulating Liquid for 5GHz, Manufactured by SPEAG

Ingredients	(% by weight)
Water	64~78%
Mineral oil	11~18%
Emulsifiers	9~15%
Additives and Salt	2~3%



The relative permittivity and conductivity of the tissue material should be within $\pm 5\%$ of the values given in the table below recommended by the FCC OET 65 supplement C and RSS 102 Issue 5.

Target Frequency (MHz)	Head		Body	
	ϵ_r	σ (S/m)	ϵ_r	σ (S/m)
150	52.3	0.76	61.9	0.80
300	45.3	0.87	58.2	0.92
450	43.5	0.87	56.7	0.94
835	41.5	0.90	55.2	0.97
900	41.5	0.97	55.0	1.05
915	41.5	0.98	55.0	1.06
1450	40.5	1.20	54.0	1.30
1610	40.3	1.29	53.8	1.40
1800-2000	40.0	1.40	53.3	1.52
2450	39.2	1.80	52.7	1.95
3000	38.5	2.40	52.0	2.73
5800	35.3	5.27	48.2	6.00

(ϵ_r = relative permittivity, σ = conductivity and ρ = 1000 kg/m³)



The dielectric parameters of liquids were verified prior to the SAR evaluation using a Speag Dielectric Probe Kit and an Agilent Network Analyzer.

The following table shows the measuring results for simulating liquid.

Frequency (MHz)	Tissue Type	Liquid Temp. (°C)	Conductivity (σ)	Conductivity Target (σ)	Delta (σ) (%)	Limit (%)	Date
2450	HSL	21.1	1.860	1.80	3.33	± 5	2018.10.18
5200	HSL	21.1	4.695	4.66	0.75	± 5	2018.11.15
5300	HSL	21.1	4.817	4.76	1.20	± 5	2018.11.15
5800	HSL	21.1	5.432	5.27	3.07	± 5	2018.11.15
2450	MSL	21.1	2.039	1.95	4.56	± 5	2018.10.18
5200	MSL	21.1	5.364	5.30	1.21	± 5	2018.11.15
5300	MSL	21.1	5.503	5.42	1.53	± 5	2018.11.15
5800	MSL	21.1	6.182	6.00	3.03	± 5	2018.11.15

Frequency (MHz)	Tissue Type	Liquid Temp. (°C)	Permittivity (ϵ_r)	Permittivity Target (ϵ_r)	Delta (ϵ_r) (%)	Limit (%)	Date
2450	HSL	21.1	40.045	39.20	2.16	± 5	2018.10.18
5200	HSL	21.1	37.042	36.00	2.89	± 5	2018.11.15
5300	HSL	21.1	36.838	35.90	2.61	± 5	2018.11.15
5800	HSL	21.1	35.732	35.30	1.22	± 5	2018.11.15
2450	MSL	21.1	50.603	52.70	-3.98	± 5	2018.10.18
5200	MSL	21.1	48.458	49.00	-1.11	± 5	2018.11.15
5300	MSL	21.1	48.195	48.90	-1.44	± 5	2018.11.15
5800	MSL	21.1	47.417	48.20	-1.62	± 5	2018.11.15

6 SAR System Verification

Each DASY system is equipped with one or more system validation kits. These units, together with the predefined measurement procedures within the DASY software, enable the user to conduct the system performance check and system validation. System validation kit includes a dipole, tripod holder to fix it underneath the flat phantom and a corresponding distance holder.

➤ Purpose of System Performance check

The system performance check verifies that the system operates within its specifications. System and operator errors can be detected and corrected. It is recommended that the system performance check be performed prior to any usage of the system in order to guarantee reproducible results. The system performance check uses normal SAR measurements in a simplified setup with a well characterized source. This setup was selected to give a high sensitivity to all parameters that might fail or vary over time. The system check does not intend to replace the calibration of the components, but indicates situations where the system uncertainty is exceeded due to drift or failure.

➤ System Setup

In the simplified setup for system evaluation, the EUT is replaced by a calibrated dipole and the power source is replaced by a continuous wave that comes from a signal generator. The calibrated dipole must be placed beneath the flat phantom section of the SAM twin phantom with the correct distance holder. The distance holder should touch the phantom surface with a light pressure at the reference marking and be oriented parallel to the long side of the phantom. The equipment setup is shown below:

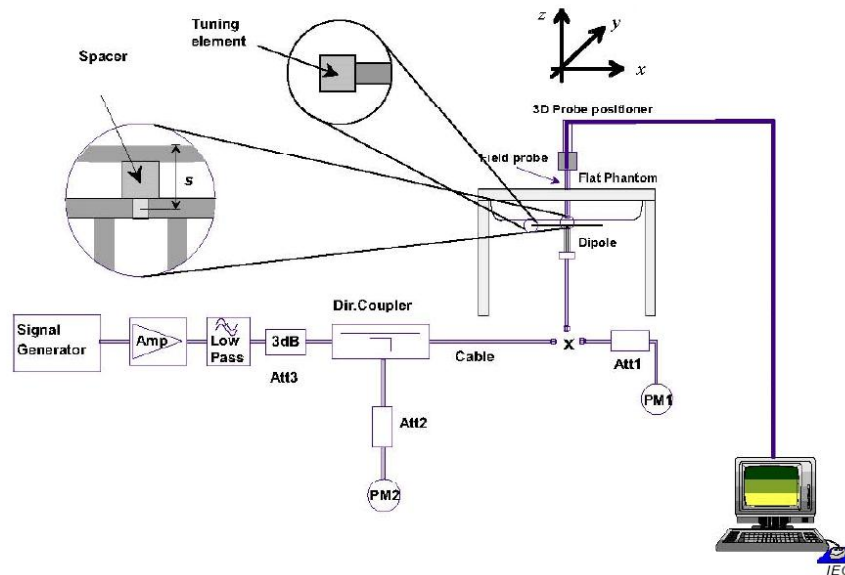


Fig.6.1 System Verification Setup Diagram

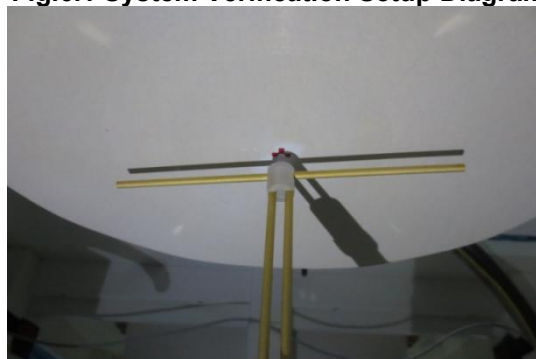


Fig.6.2 Photo of Dipole setup

**➤ System Verification Results**

Comparing to the original SAR value provided by SPEAG, the verification data should be within its specification of 10%. Below table shows the target SAR and measured SAR after normalized to 1W input power. The table as below indicates the system performance check can meet the variation criterion and the plots can be referred to Appendix C of this report.

<1g SAR>

Date	Freq. (MHz)	Tissue Type	Input Power (mW)	Dipole S/N	Probe S/N	DAE S/N	Measured 1g SAR (W/kg)	Targeted 1g SAR (W/kg)	Normalized 1g SAR (W/kg)	Deviation (%)
2018.10.18	2450	HSL	250	D2450V2-997	SN3154	1516	13.13	52.50	52.52	-0.04
2018.11.15	5200	HSL	100	D5GHzV2-1176	SN3823	1516	8.16	78.20	81.60	-4.17
2018.11.15	5300	HSL	100	D5GHzV2-1176	SN3823	1516	7.83	82.50	78.30	5.36
2018.11.15	5800	HSL	100	D5GHzV2-1176	SN3823	1516	8.13	79.60	81.30	-2.09
2018.10.18	2450	MSL	250	D2450V2-997	SN3154	1516	13.40	52.5	53.6	-2.05
2018.11.15	5200	MSL	100	D5GHzV2-1176	SN3823	1516	7.61	74.60	76.1	-1.97
2018.11.15	5300	MSL	100	D5GHzV2-1176	SN3823	1516	7.74	76.20	77.4	-1.55
2018.11.15	5800	MSL	100	D5GHzV2-1176	SN3823	1516	7.81	77.90	78.1	-0.26

<10g SAR>

Date	Freq. (MHz)	Tissue Type	Input Power (mW)	Dipole S/N	Probe S/N	DAE S/N	Measured 10g SAR (W/kg)	Targeted 10g SAR (W/kg)	Normalized 10g SAR (W/kg)	Deviation (%)
2018.10.18	2450	HSL	250	D2450V2-997	SN3154	1516	6.16	24.70	24.64	0.24
2018.11.15	5200	HSL	100	D5GHzV2-1176	SN3823	1516	2.22	22.50	22.20	1.35
2018.11.15	5300	HSL	100	D5GHzV2-1176	SN3823	1516	2.26	23.50	22.60	3.98
2018.11.15	5800	HSL	100	D5GHzV2-1176	SN3823	1516	2.25	22.90	22.50	1.78
2018.10.18	2450	MSL	250	D2450V2-997	SN3154	1516	6.15	24.50	24.60	-0.41
2018.11.15	5200	MSL	100	D5GHzV2-1176	SN3823	1516	2.20	21.10	22.00	-4.09
2018.11.15	5300	MSL	100	D5GHzV2-1176	SN3823	1516	2.21	21.70	22.10	-1.81
2018.11.15	5800	MSL	100	D5GHzV2-1176	SN3823	1516	2.22	21.90	22.20	-1.35

Note: System checks the specific test data please see Annex C

7 EUT Testing Position

This EUT was tested in two different positions. They are front of face for head with phantom 10 mm gap, wrist-worn of the EUT with phantom 0 mm gap, as illustrated below, please refer to Appendix B for the test setup photos.

7.1 SAR Evaluations near the Mouth/Jaw Regions of the SAM Phantom

Transmitters that are built-in within a wrist watch or similar wrist-worn devices typically operate in speaker mode for voice communication, with the device worn on the wrist and positioned next to the mouth. Next to the mouth exposure requires 1-g SAR and the wrist-worn condition requires 10-g extremity SAR. The 10-g extremity and 1-g SAR test exclusions may be applied to the wrist and face exposure conditions. When SAR evaluation is required, next to the mouth use is evaluated with the front of the device positioned at 10 mm from a flat phantom filled with head tissue-equivalent medium. The wrist bands should be strapped together to represent normal use conditions. SAR for wrist exposure is evaluated with the back of the device positioned in direct contact against a flat phantom filled with body tissue-equivalent medium. The wrist bands should be unstrapped and touching the phantom. The space introduced by the watch or wrist bands and the phantom must be representative of actual use conditions; otherwise, if applicable, the neck or a curved head region of the SAM phantom may be used, provided the device positioning and SAR probe access issues have been addressed through a KDB inquiry. When other device positioning and SAR measurement considerations are necessary, a KDB inquiry is also required for the test results to be acceptable; for example, devices with rigid wrist bands or electronic circuitry and/or antenna(s) incorporated in the wrist bands. These test configurations are applicable only to devices that are worn on the wrist and cannot support other use conditions; therefore, the operating restrictions must be fully demonstrated in both the test reports and user manuals.

7.2 Limb-worn Accessory Configurations

- To position the device parallel to the phantom surface with either keypad up or down.
- To adjust the device parallel to the flat phantom.
- To adjust the distance between the device surface and the flat phantom to 10 mm or holster surface and the flat phantom to 0 mm.

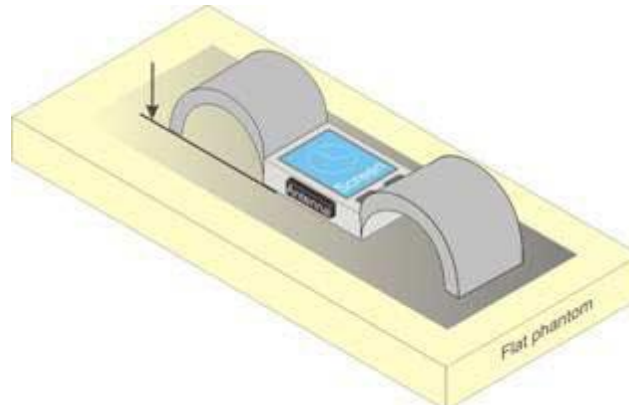


Fig.7.1 Illustration for Limb-worn Position

8 Measurement Procedures

The measurement procedures are as follows:

<Conducted power measurement>

- For WWAN power measurement, use base station simulator to configure EUT WWAN transmission in conducted connection with RF cable, at maximum power in each supported wireless interface and frequency band.
- Read the WWAN RF power level from the base station simulator.
- For WLAN/BT power measurement, use engineering software to configure EUT WLAN/BT continuously transmission, at maximum RF power in each supported wireless interface and frequency band.
- Connect EUT RF port through RF cable to the power meter or spectrum analyzer, and measure WLAN/BT output power.

<Conducted power measurement>

- Use base station simulator to configure EUT WWAN transmission in radiated connection, and engineering software to configure EUT WLAN/BT continuously transmission, at maximum RF power, in the highest power channel.
- Place the EUT in positions as Appendix B demonstrates.
- Set scan area, grid size and other setting on the DASY software.
- Measure SAR results for the highest power channel on each testing position.
- Find out the largest SAR result on these testing positions of each band.
- Measure SAR results for other channels in worst SAR testing position if the Reported SAR or highest power channel is larger than 0.8 W/kg.

According to the test standard, the recommended procedure for assessing the peak spatial-average SAR value consists of the following steps:

- Power reference measurement
- Area scan
- Zoom scan
- Power drift measurement

8.1 Spatial Peak SAR Evaluation

The procedure for spatial peak SAR evaluation has been implemented according to the test standard. It can be conducted for 1g and 10g, as well as for user-specific masses. The DASY software includes all numerical procedures necessary to evaluate the spatial peak SAR value.

The base for the evaluation is a “cube” measurement. The measured volume must include the 1g and 10 g cubes with the highest averaged SAR values. For that purpose, the center of the measured volume is aligned to the interpolated peak SAR value of a previously performed area scan.

The entire evaluation of the spatial peak values is performed within the post-processing engine (SEMCAD). The system always gives the maximum values for 1g and 10g cubes. The algorithm to find the cube with highest averaged SAR is divided into the following stages:

- Extraction of the measured data (grid and values) from the Zoom Scan.
- Calculation of the SAR value at every measurement point based on all stored data (A/D values and measurement parameters).
- Generation of a high-resolution mesh within the measured volume.
- Interpolation of all measured values from the measurement grid to the high-resolution grid
- Extrapolation of the entire 3-D field distribution to the phantom surface over the distance from sensor to surface
- Calculation of the averaged SAR within masses of 1g and 10g.

8.2 Power Reference Measurement

The Power Reference Measurement and Power Drift Measurement are for monitoring the power drift of the device under test in the batch process. The minimum distance of probe sensors to surface determines the closest measurement point to phantom surface. This distance cannot be smaller than the distance of sensor calibration points to probe tip as defined in the probe properties.

8.3 Area & Zoom Scan Procedures

First Area Scan is used to locate the approximate location(s) of the local peak SAR value(s). The measurement grid within an Area Scan is defined by the grid extent, grid step size and grid offset. Next, in order to determine the EM field distribution in a three-dimensional spatial extension, Zoom Scan is required. The Zoom Scan is performed around the highest E-field value to determine the averaged SAR-distribution over 10g. Area scan and zoom scan resolution setting follows KDB 865664 D01v01r04 quoted below.

			≤ 3 GHz	> 3 GHz
Maximum distance from closest measurement point (geometric center of probe sensors) to phantom surface			5 ± 1 mm	$\frac{1}{2} \delta \cdot \ln(2) \pm 0.5$ mm
Maximum probe angle from probe axis to phantom surface normal at the measurement location			$30^\circ \pm 1^\circ$	$20^\circ \pm 1^\circ$
Maximum area scan spatial resolution: Δx_{Area} , Δy_{Area}			≤ 2 GHz: ≤ 15 mm 2 – 3 GHz: ≤ 12 mm	3 – 4 GHz: ≤ 12 mm 4 – 6 GHz: ≤ 10 mm
			When the x or y dimension of the test device, in the measurement plane orientation, is smaller than the above, the measurement resolution must be \leq the corresponding x or y dimension of the test device with at least one measurement point on the test device.	
Maximum zoom scan spatial resolution: Δx_{Zoom} , Δy_{Zoom}			≤ 2 GHz: ≤ 8 mm 2 – 3 GHz: ≤ 5 mm*	3 – 4 GHz: ≤ 5 mm* 4 – 6 GHz: ≤ 4 mm*
Maximum zoom scan spatial resolution, normal to phantom surface	uniform grid: $\Delta z_{Zoom}(n)$		≤ 5 mm	3 – 4 GHz: ≤ 4 mm 4 – 5 GHz: ≤ 3 mm 5 – 6 GHz: ≤ 2 mm
	graded grid	$\Delta z_{Zoom}(1)$: between 1 st two points closest to phantom surface	≤ 4 mm	3 – 4 GHz: ≤ 3 mm 4 – 5 GHz: ≤ 2.5 mm 5 – 6 GHz: ≤ 2 mm
		$\Delta z_{Zoom}(n>1)$: between subsequent points	$\leq 1.5 \cdot \Delta z_{Zoom}(n-1)$	
Minimum zoom scan volume	x, y, z		≥ 30 mm	3 – 4 GHz: ≥ 28 mm 4 – 5 GHz: ≥ 25 mm 5 – 6 GHz: ≥ 22 mm
Note: δ is the penetration depth of a plane-wave at normal incidence to the tissue medium; see draft standard IEEE P1528-2011 for details.				
* When zoom scan is required and the <u>reported</u> SAR from the <i>area scan based 1-g SAR estimation</i> procedures of KDB 447498 is ≤ 1.4 W/kg, ≤ 8 mm, ≤ 7 mm and ≤ 5 mm zoom scan resolution may be applied, respectively, for 2 GHz to 3 GHz, 3 GHz to 4 GHz and 4 GHz to 6 GHz.				



8.4 Volume Scan Procedures

The volume scan is used for assess overlapping SAR distributions for antennas transmitting in different frequency bands. It is equivalent to an oversized zoom scan used in standalone measurements. The measurement volume will be used to enclose all the simultaneous transmitting antennas. For antennas transmitting simultaneously in different frequency bands, the volume scan is measured separately in each frequency band. In order to sum correctly to compute the 1g aggregate SAR, the EUT remain in the same test position for all measurements and all volume scan use the same spatial resolution and grid spacing. When all volume scan were completed, the software, SEMCAD post-processor scan combine and subsequently superpose these measurement data to calculating the multiband SAR.

8.5 SAR Averaged Methods

In DASY, the interpolation and extrapolation are both based on the modified Quadratic Shepard's method. The interpolation scheme combines a least-square fitted function method and a weighted average method which are the two basic types of computational interpolation and approximation.

Extrapolation routines are used to obtain SAR values between the lowest measurement points and the inner phantom surface. The extrapolation distance is determined by the surface detection distance and the probe sensor offset. The uncertainty increases with the extrapolation distance. To keep the uncertainty within 1% for the 1g and 10g cubes, the extrapolation distance should not be larger than 5 mm.

8.6 Power Drift Monitoring

All SAR testing is under the EUT install full charged battery and transmit maximum output power. In DASY measurement software, the power reference measurement and power drift measurement procedures are used for monitoring the power drift of EUT during SAR test. Both these procedures measure the field at a specified reference position before and after the SAR testing. The software will calculate the field difference in dB. If the power drifts more than 5%, the SAR will be retested.

9 Conducted RF Output Power

9.1 WLAN 2.4 GHz Band Conducted Power

	Mode	Channel	Frequency (MHz)	Average power (dBm)	Tune-Up Limit	Power Setting
2.4GHz WLAN	802.11b 1Mbps	CH 01	2412	17.59	18.00	19.00
		CH 06	2437	17.57	18.00	19.00
		CH 11	2462	17.65	18.00	19.00
	802.11g 6Mbps	CH 01	2412	13.47	13.50	17.00
		CH 6	2437	15.51	16.00	17.00
		CH 11	2462	15.50	16.00	17.00
	802.11n-HT20 MCS0	CH 01	2412	13.62	14.00	17.00
		CH 06	2437	15.48	15.50	17.00
		CH 11	2462	15.50	16.00	17.00
	802.11n-HT40 MCS0	CH 03	2422	14.89	15.00	16.50
		CH 06	2437	14.92	15.00	16.50
		CH 09	2452	15.09	15.50	16.50

Note:

- Per KDB 447498 D01v06, the 1-g SAR test exclusion thresholds for 100 MHz to 6 GHz at *test separation distances* ≤ 50 mm are determined by:

$$[(\text{max. power of channel, including tune-up tolerance, mW}) / (\text{min. test separation distance, mm})] \cdot [\sqrt{f(\text{GHz})}] \leq 3.0$$
for 1-g SAR, where
 - f(GHz) is the RF channel transmit frequency in GHz
 - Power and distance are rounded to the nearest mW and mm before calculation
 - The result is rounded to one decimal place for comparison

Channel	Frequency (GHz)	Max. Tune-up Power (dBm)	Max. Power (mW)	Test distance (mm)	Result	exclusion thresholds for 1-g SAR
b/CH 11	2.462	18.00	63.10	5	19.81	3.0
g/CH 06	2.437	16.00	39.81	5	12.50	3.0

- Base on the result of note1, RF exposure evaluation of 802.11 b mode is required.
- Per KDB 248227 D01v02r02, choose the highest output power channel to test SAR and determine further SAR exclusion.
- Per KDB 248227 D01v02r02, In the 2.4 GHz band, separate SAR procedures are applied to DSSS and OFDM configurations to simplify DSSS test requirements. SAR is not required for the following 2.4 GHz OFDM conditions:
 - When KDB Publication 447498 SAR test exclusion applies to the OFDM configuration.
 - When the highest reported SAR for DSSS is adjusted by the ratio of OFDM to DSSS specified maximum output power and the adjusted SAR is ≤ 1.2 W/kg.
- The output power of all data rate were pre-scan, just the worst case (the lowest data rate) of all mode were shown in report.
- Per KDB 248227 D01V02r02 section 2.2, when the EUT in continuously transmitting mode, the actual duty cycle is 100%, so the duty cycle factor is 1.

9.2 WLAN 5.2 GHz Band Conducted Power

	Mode	Channel	Frequency (MHz)	Average power (dBm)	Tune-Up Limit	Power Setting
5.2GHz WLAN	802.11a 6Mbps	CH 36	5180	11.82	12.50	17.00
		CH 44	5220	11.29	11.50	17.00
		CH 48	5240	10.77	11.50	17.00
	802.11n-HT20 MCS0	CH 36	5180	11.94	12.50	17.00
		CH 44	5220	11.27	11.50	17.00
		CH 48	5240	10.62	11.00	17.00
	802.11n-HT40 MCS0	CH 38	5190	11.88	12.50	17.00
		CH 46	5230	11.12	11.50	17.00

Note:

- Per KDB 447498 D01v06, the 1-g SAR test exclusion thresholds for 100 MHz to 6 GHz at *test separation distances* ≤50 mm are determined by:

$$[(\text{max. power of channel, including tune-up tolerance, mW}) / (\text{min. test separation distance, mm})] \cdot [\sqrt{f(\text{GHz})}] \leq 3.0$$
 for 1-g SAR, where
 - f(GHz) is the RF channel transmit frequency in GHz
 - Power and distance are rounded to the nearest mW and mm before calculation
 - The result is rounded to one decimal place for comparison

Channel	Frequency (GHz)	Max. Tune-up Power (dBm)	Max. Power (mW)	Test distance (mm)	Result	exclusion thresholds for 1-g SAR
n-HT20/CH 36	5.180	12.00	15.85	7.23	19.81	3.0

- Per KDB 248227 D01v02r02, choose the highest output power channel to test SAR and determine further SAR exclusion.
- The output power of all data rate were pre-scan, just the worst case (the lowest data rate) of all mode were shown in report.
- Per KDB 248227 D01V02r02 section 2.2, when the EUT in continuously transmitting mode, the actual duty cycle is 100%, so the duty cycle factor is 1.

9.3 WLAN 5.3 GHz Band Conducted Power

	Mode	Channel	Frequency (MHz)	Average power (dBm)	Tune-Up Limit	Power Setting
5.3GHz WLAN	802.11a 6Mbps	CH 52	5260	10.82	11.50	17.00
		CH 60	5300	9.83	10.50	17.00
		CH 64	5320	10.07	10.50	17.00
	802.11n-HT20 MCS0	CH 52	5260	9.86	10.50	17.00
		CH 60	5300	9.23	9.50	17.00
		CH 64	5320	9.88	10.50	17.00
	802.11n-HT40 MCS0	CH 54	5270	10.07	10.50	17.00
		CH 62	5310	9.73	10.50	17.00

Note:

11. Per KDB 447498 D01v06, the 1-g SAR test exclusion thresholds for 100 MHz to 6 GHz at *test separation distances* ≤ 50 mm are determined by:

$[(\text{max. power of channel, including tune-up tolerance, mW}) / (\text{min. test separation distance, mm})] \cdot [\sqrt{f(\text{GHz})}] \leq 3.0$ for 1-g SAR, where

- $f(\text{GHz})$ is the RF channel transmit frequency in GHz
- Power and distance are rounded to the nearest mW and mm before calculation
- The result is rounded to one decimal place for comparison

Channel	Frequency (GHz)	Max. Tune-up Power (dBm)	Max. Power (mW)	Test distance (mm)	Result	exclusion thresholds for 1-g SAR
a/CH 52	5.260	11.00	12.59	5	5.77	3.0

12. Per KDB 248227 D01v02r02, choose the highest output power channel to test SAR and determine further SAR exclusion.
13. The output power of all data rate were pre-scan, just the worst case (the lowest data rate) of all mode were shown in report.
14. Per KDB 248227 D01V02r02 section 2.2, when the EUT in continuously transmitting mode, the actual duty cycle is 100%, so the duty cycle factor is 1.

9.4 WLAN 5.8 GHz Band Conducted Power

	Mode	Channel	Frequency (MHz)	Average power (dBm)	Tune-Up Limit	Power Setting
5.8GHz WLAN	802.11a MCS0	CH 149	5745	12.92	13.50	17.00
		CH 157	5785	11.95	12.50	17.00
		CH 165	5825	12.40	13.00	17.00
	802.11n-HT20 MCS0	CH 149	5745	12.45	13.00	17.00
		CH 157	5785	12.50	13.00	17.00
		CH 165	5825	11.93	12.50	17.00
	802.11n-HT40 MCS0	CH 151	5755	12.66	13.00	17.00
		CH 159	5795	12.45	13.00	17.00

Note:

15. Per KDB 447498 D01v06, the 1-g SAR test exclusion thresholds for 100 MHz to 6 GHz at *test separation distances* ≤50 mm are determined by:

$[(\text{max. power of channel, including tune-up tolerance, mW}) / (\text{min. test separation distance, mm})] \cdot [\sqrt{f(\text{GHz})}] \leq 3.0$ for 1-g SAR, where

- $f(\text{GHz})$ is the RF channel transmit frequency in GHz
- Power and distance are rounded to the nearest mW and mm before calculation
- The result is rounded to one decimal place for comparison

Channel	Frequency (GHz)	Max. Tune-up Power (dBm)	Max. Power (mW)	Test distance (mm)	Result	exclusion thresholds for 1-g SAR
a/CH 149	5.745	13.00	19.95	5	9.34	3.0

16. Per KDB 248227 D01v02r02, choose the highest output power channel to test SAR and determine further SAR exclusion.
17. The output power of all data rate were pre-scan, just the worst case (the lowest data rate) of all mode were shown in report.
18. Per KDB 248227 D01V02r02 section 2.2, when the EUT in continuously transmitting mode, the actual duty cycle is 100%, so the duty cycle factor is 1.

9.5 Bluetooth Conducted Power

Mode	Channel	Frequency (MHz)	Peak power (dBm)		
			1Mbps	2Mbps	3Mbps
BR / EDR	CH 00	2402	6.992	7.038	6.083
	CH 39	2441	6.993	7.033	6.176
	CH 78	2480	6.472	6.509	5.779
Tune-up Limit (dBm)			7.000	7.500	6.500

Mode	Channel	Frequency (MHz)	Peak power (dBm)
			GFSK
LE	CH 00	2402	-0.932
	CH 19	2440	-0.995
	CH 39	2480	-1.513
Tune-up Limit (dBm)			-0.500

Note:

- Per KDB 447498 D01v06, the 1-g SAR test exclusion thresholds for 100 MHz to 6 GHz at *test separation distances* ≤ 50 mm are determined by:

$$[(\text{max. power of channel, including tune-up tolerance, mW}) / (\text{min. test separation distance, mm})] \cdot [\sqrt{f(\text{GHz})}] \leq 3.0$$
for 1-g SAR, where
 - f(GHz) is the RF channel transmit frequency in GHz
 - Power and distance are rounded to the nearest mW and mm before calculation
 - The result is rounded to one decimal place for comparison

Channel	Frequency (GHz)	Max. tune-up Power (dBm)	Max. Power (mW)	Test distance (mm)	Result	exclusion thresholds for 1-g SAR	exclusion thresholds for 10-g SAR
CH 00	2.402	7.50	5.62	5	1.74	3.0	7.5

- The max. tune-up power was provided by manufacturer, base on the result of note 1, RF exposure evaluation is not required.
- The output power of all data rate were pre-scan, just the worst case of all mode were shown in report.
- When the minimum *test separation distance* is < 5 mm, a distance of 5 mm according is applied to determine SAR test exclusion.

10 Exposure Positions Consideration

10.1 EUT Antenna Locations

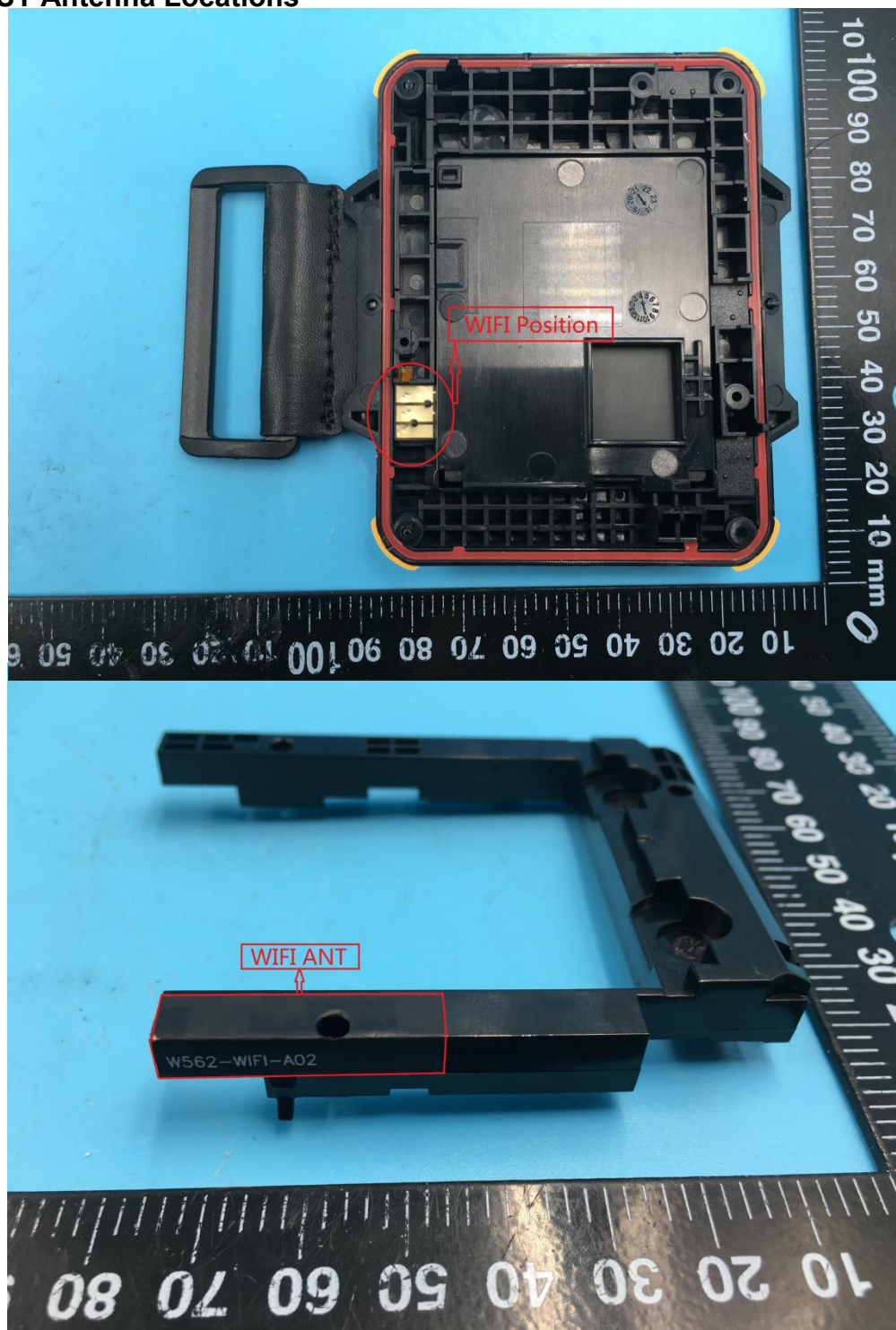


Fig.10.1 EUT Antenna Locations



10.2 Test Positions Consideration

Test Positions							
Antennas	Exposure Conditions	Back	Front	Top Side	Bottom Side	Right Side	Left Side
WIFI	Next to Mouth	No	Yes	No	No	No	No
	Wrist-worn	Yes	No	No	No	No	No
Bluetooth	Next to Mouth	No	Yes	No	No	No	No
	Wrist-worn	Yes	No	No	No	No	No

Note:

1. Next to mouth/Wrist-worn mode SAR assessments are required.
Per KDB 447498 D01v06, When SAR evaluation is required, next to the mouth use is evaluated with the front of the device positioned at 10 mm from a flat phantom filled with head tissue-equivalent medium.
SAR for wrist exposure is evaluated with the back of the devices positioned in direct contact against a flat phantom fill with body tissue-equivalent medium.



11 SAR Test Results Summary

11.1 Standalone SAR Data

➤ Next to Mouth

Plot No.	Band/Mode	Test Position	Gap.	CH.	Ave. Power (dBm)	Tune-Up Limit (dBm)	Tune-Up Scaling Factor	Meas. SAR _{1g} (W/kg)	Reported SAR _{1g} (W/kg)
1#	2.4GHz/802.11b	Front	10mm	11	17.65	18.00	1.084	0.106	0.115
2#	5GHz/802.11n-HT20	Front	10mm	36	11.94	12.50	1.138	0.073	0.083
3#	5GHz/802.11a	Front	10mm	52	10.82	11.50	1.169	0.069	0.081
4#	5GHz/802.11a	Front	10mm	149	12.92	13.50	1.143	0.036	0.041

Note:

1. Per KDB 447498 D01v06, for each exposure position, if the highest output power channel Reported SAR $\leq 0.8\text{W/kg}$, other channels SAR testing is not necessary.
2. Per KDB 447498 D01v06, next to the mouth use is evaluated with the front of the device positioned at 10 mm from a flat phantom filled with head tissue-equivalent medium.
3. Per KDB 447498 D01v06, Next to the mouth exposure requires 1-g SAR, and the wrist-worn condition requires 10-g extremity SAR.
4. Per KDB248227 D01v02r02, OFDM SAR is not required when the highest reported SAR for DSSS is adjusted by the ratio of OFDM to DSSS specified maximum output power and the adjusted SAR is $\leq 1.2\text{ W/kg}$. Cuz the maximum output power specified for OFDM and DSSS are 35.56mW(15.51dBm) and 58.21mW(17.65dBm), the scaled SAR would be $0.115 \times (35.56/58.21) = 0.070\text{W/Kg} < 1.2\text{ W/kg}$, therefore, SAR is not required for OFDM.

➤ Wrist-worn

Plot No.	Band/Mode	Test Position	Gap.	CH.	Ave. Power (dBm)	Tune-Up Limit (dBm)	Tune-Up Scaling Factor	Meas. SAR _{10g} (W/kg)	Reported SAR _{10g} (W/kg)
5#	2.4GHz/802.11b	Back	0mm	11	17.65	18.00	1.084	0.531	0.576
6#	5GHz/802.11n-HT20	Back	0mm	36	11.94	12.50	1.138	0.221	0.251
7#	5GHz/802.11a	Back	0mm	52	10.82	11.50	1.169	0.236	0.276
8#	5GHz/802.11a	Back	0mm	149	12.92	13.50	1.143	0.142	0.162

Note:

1. Per KDB 447498 D01v06, for each exposure position, if the highest output channel Reported SAR $\leq 2.0\text{W/kg}$, other channels SAR testing is not necessary.
2. Per KDB 447498 D01v06, When SAR evaluation is required, SAR for wrist exposure is evaluated with the back of the devices positioned in direct contact against a flat phantom fill with body tissue-equivalent medium.
3. Per KDB 447498 D01v06, Next to the mouth exposure requires 1-g SAR, and the wrist-worn condition requires 10-g extremity SAR.



11.2 SAR Simultaneous Transmission Analysis

This DUT supports 2.45GHz/5GHz WLAN and Bluetooth according to the network signal condition, therefore, it will not transmit simultaneously.



11.3 Measurement Uncertainty

The component of uncertainty may generally be categorized according to the methods used to evaluate them. The evaluation of uncertainty by the statistical analysis of a series of observations is termed a Type A evaluation of uncertainty. The evaluation of uncertainty by means other than the statistical analysis of a series of observation is termed a Type B evaluation of uncertainty. Each component of uncertainty, however evaluated, is represented by an estimated standard deviation, termed standard uncertainty, which is determined by the positive square root of the estimated variance.

A Type A evaluation of standard uncertainty may be based on any valid statistical method for treating data. This includes calculating the standard deviation of the mean of a series of independent observations; using the method of least squares to fit a curve to the data in order to estimate the parameter of the curve and their standard deviations; or carrying out an analysis of variance in order to identify and quantify random effects in certain kinds of measurement.

A Type B evaluation of standard uncertainty is typically based on scientific judgment using all of the relevant information available. These may include previous measurement data, experience, and knowledge of the behavior and properties of relevant materials and instruments, manufacture's specification, data provided in calibration reports and uncertainties assigned to reference data taken from handbooks. Broadly speaking, the uncertainty is either obtained from an outdoor source or obtained from an assumed distribution, such as the normal distribution, rectangular or triangular distributions indicated in below Table.

Uncertainty Distributions	Normal	Rectangular	Triangular	U-Shape
Multi-plying Factor	$1/k(b)$	$1/\sqrt{3}$	$1/\sqrt{6}$	$1/\sqrt{2}$

Standard Uncertainty for Assumed Distribution

The combined standard uncertainty of the measurement result represents the estimated standard deviation of the result. It is obtained by combining the individual standard uncertainties of both Type A and Type B evaluation using the usual "root-sum-squares" (RSS) methods of combining standard deviations by taking the positive square root of the estimated variances.

Expanded uncertainty is a measure of uncertainty that defines an interval about the measurement result within which the measured value is confidently believed to lie. It is obtained by multiplying the combined standard uncertainty by a coverage factor. Typically, the coverage factor ranges from 2 to 3. Using a coverage factor allows the true value of a measured quantity to be specified with a defined probability within the specified uncertainty range. For purpose of this document, a coverage factor two is used, which corresponds to confidence interval of about 95 %. The SATIMO uncertainty Budget is shown in the following tables.



11.4 Uncertainty Evaluation For Handset SAR Test

a	b	c	d	e= f(d,k)	f	g	h= c*f/e	i= c*g/e	j
Uncertainty Component	Sec.	Tol (+-%)	Prob. Dist.	Div.	Ci (1g)	Ci (10g)	1g Ui (+-%)	10g Ui (+-%)	Vi
Measurement System									
Probe calibration	E.2.1	5.83	N	1	1	1	5.83	5.83	∞
Axial Isotropy	E.2.2	3.5	R	$\sqrt{3}$	1	1	2.02	2.02	∞
Hemispherical Isotropy	E.2.2	5.9	R	$\sqrt{3}$	1	1	3.41	3.41	∞
Boundary effect	E.2.3	1.0	R	$\sqrt{3}$	1	1	0.58	0.58	∞
Linearity	E.2.4	4.7	R	$\sqrt{3}$	1	1	2.71	2.71	∞
System detection limits	E.2.5	1.0	R	$\sqrt{3}$	1	1	0.58	0.58	∞
Modulation Response	E.2.4	4.1	R	$\sqrt{3}$	1	1	2.4	2.4	∞
Readout Electronics	E.2.6	0.5	N	1	1	1	0.5	0.5	∞
Reponse Time	E.2.7	3.0	R	$\sqrt{3}$	1	1	3.0	3.0	∞
Integration Time	E.2.8	1.4	R	$\sqrt{3}$	1	1	0.81	0.81	∞
RF ambient Conditions	E.6.1	3.0	R	$\sqrt{3}$	1	1	1.73	1.73	∞
Probe positioner Mechanical Tolerance	E.6.2	1.4	R	$\sqrt{3}$	1	1	0.81	0.81	∞
Probe positioning with respect to Phantom Shell	E.6.3	1.4	R	$\sqrt{3}$	1	1	0.81	0.81	∞
Extrapolation, interpolation and integration Algorithms for Max. SAR Evaluation	E.5.2	2.3	R	$\sqrt{3}$	1	1	1.33	1.33	∞
Test sample Related									
Test sample positioning	E.4.2.1	2.6	N	1	1	1	2.6	2.6	N-1
Device Holder Uncertainty	E.4.1.1	3.0	N	1	1	1	3.0	3.0	N-1
Output power Power drift - SAR drift measurement	6.6.2	5.0	R	$\sqrt{3}$	1	1	2.89	2.89	∞
Phantom and Tissue Parameters									
Phantom Uncertainty (Shape and thickness tolerances)	E.3.1	4.0	R	$\sqrt{3}$	1	1	2.31	2.31	∞
Liquid conductivity - deviation from target value	E.3.2	2.0	R	$\sqrt{3}$	0.6 4	0.43	1.69	1.13	∞
Liquid conductivity - measurement uncertainty	E.3.3	2.5	N	1	0.6 4	0.43	3.20	2.15	M
Liquid permittivity - deviation from target value	E.3.2	2.5	R	$\sqrt{3}$	0.6	0.49	1.28	1.04	∞
Liquid permittivity - measurement uncertainty	E.3.3	5.0	N	1	0.6	0.49	6.00	4.90	M
Liquid conductivity -temperature uncertainty	E.3.4		R	$\sqrt{3}$	0.7 8	0.41			∞



Liquid permittivity –temperature uncertainty	E.3.4		R	$\sqrt{3}$	$\frac{0.2}{3}$	0.26			∞
Combined Standard Uncertainty			RSS				11.55	12.07	
Expanded Uncertainty (95% Confidence interval)			K=2				± 23.20	± 24.17	

Uncertainty For System Performance Check

a	b	c	d	e= f(d,k)	f	g	h= c*f/e	i= c*g/e	k
Uncertainty Component	Sec.	Tol (+-%)	Prob. Dist.	Div.	Ci (1g)	Ci (10g)	1g Ui (+-%)	10g Ui (+-%)	Vi
Measurement System									
Probe calibration	E.2.1	4.76	N	1	1	1	4.76	4.76	∞
Axial Isotropy	E.2.2	2.5	R	$\sqrt{3}$	1	1	1.44	1.41	∞
Hemispherical Isotropy	E.2.2	4.0	R	$\sqrt{3}$	1	1	2.31	2.32	∞
Boundary effect	E.2.3	1.0	R	$\sqrt{3}$	1	1	0.58	0.58	∞
Linearity	E.2.4	5.0	R	$\sqrt{3}$	1	1	2.89	2.89	∞
System detection limits	E.2.5	1.0	R	$\sqrt{3}$	1	1	0.58	0.58	∞
Readout Electronics	E.2.6	0.02	N	1	1	1	0.02	0.02	∞
Reponse Time	E.2.7	3.0	R	$\sqrt{3}$	1	1	1.73	1.73	∞
Integration Time	E.2.8	2.0	R	$\sqrt{3}$	1	1	1.15	1.15	∞
RF ambient Conditions	E.6.1	3.0	R	$\sqrt{3}$	1	1	1.73	1.73	∞
Probe positioner Mechanical Tolerance	E.6.2	2.0	R	$\sqrt{3}$	1	1	1.15	1.15	∞
Probe positioning with respect to Phantom Shell	E.6.3	0.05	R	$\sqrt{3}$	1	1	0.03	0.03	∞
Extrapolation, interpolation and integration Algorithms for Max. SAR Evaluation	E.5.2	5.0	R	$\sqrt{3}$	1	1	2.89	2.89	∞
Dipole									
Dipole axis to liquid Distance	8,E.4.2	1.00	N	$\sqrt{3}$	1	1	0.58	0.58	∞
Input power and SAR drift measurement	8,6.6.2	4.04	R	$\sqrt{3}$	1	1	2.33	2.33	∞
Phantom and Tissue Parameters									
Phantom Uncertainty (Shape and thickness tolerances)	E.3.1	0.05	R	$\sqrt{3}$	1	1	0.03	0.03	∞
Liquid conductivity - deviation from target value	E.3.2	4.57	R	$\sqrt{3}$	0.64	0.43	1.69	1.13	∞



Liquid conductivity - measurement uncertainty	E.3.3	5.00	N	$\sqrt{3}$	0.64	0.43	1.85	1.24	M
Liquid permittivity - deviation from target value	E.3.2	3.69	R	$\sqrt{3}$	0.6	0.49	1.28	1.04	∞
Liquid permittivity - measurement uncertainty	E.3.3	10.0 0	N	$\sqrt{3}$	0.6	0.49	3.46	2.83	M
Combined Standard Uncertainty			RSS				8.83	8.37	
Expanded Uncertainty (95% Confidence interval)			K=2				17.66	16.7 3	

11.5 Measurement Conclusion

The SAR evaluation indicates that the EUT complies with the RF radiation exposure limits of the CE, with respect to all parameters subject to this test. These measurements were taken to simulate the RF effects of RF exposure under worst-case conditions. Precise laboratory measures were taken to assure repeatability of the tests. The results and statements relate only to the item(s) tested. Please note that the absorption and distribution of electromagnetic energy in the body are very complex phenomena that depend on the mass, shape, and size of the body, the orientation of the body with respect to the field vectors, and the electrical properties of both the body and the environment. Other variables that may play a substantial role in possible biological effects are those that characterize the environment (e.g. ambient temperature, air velocity, relative humidity, and body insulation) and those that characterize the individual (e.g. age, gender, activity level, debilitation, or disease). Because various factors may interact with one another to vary the specific biological outcome of an exposure to electromagnetic fields, any protection guide should consider maximal amplification of biological effects as a result of field-body interactions, environmental conditions, and physiological variables.