

thank you

Making beautiful accessories for your Apple devices since 2009. Personalize your gear and discover more accessories at twelvesouth.com.

12 ways to re-use your PowerPic box.

Recycling is great. Reusing is even better. So here are some fun ideas for re-purposing your PowerPic box.

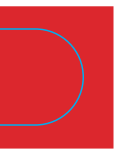
1. cover it with chalkboard paint and use it as a mini message board
2. use it as a place to store charging cables for all of your electronics
3. plant wheat grass in the lid for a modern turf table piece
4. turn it into a small shadow box
5. cut a slit in the top and use as a sweet box for Valentine's cards
6. use it as a treasure chest for kids
7. turn it into kindling for a romantic fire
8. fill with pens, pencils, crayons and markers
9. put a gift inside and mail it to a friend
10. use it as a drawer organizer in the kitchen or office
11. get out your paint and turn it into a piece of art
12. let your kids use it for their next craft project

Have more questions?

Visit twelvesouth.com or contact support@twelvesouth.com

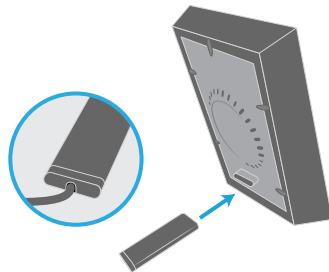
View and download additional photos for PowerPic with matching backgrounds for your device at twelvesouth.com/wallpaper/powerpic

PowerPic
owner's guide

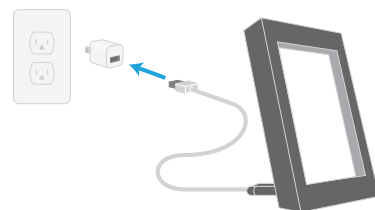


Getting started with PowerPic

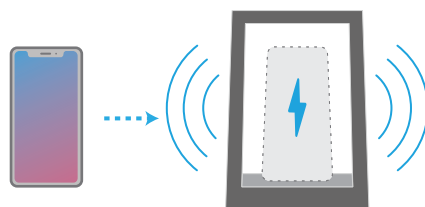
- 1 Insert Support Arm into back of PowerPic. Firmly press in until fully seated.



- 2 Plug PowerPic cable into any USB charger, like your USB phone charger, USB outlet or computer (USB charger not included).

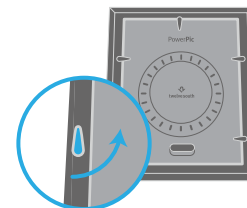


- 3 To charge your phone, place it inside the frame ledge and rest against glass.

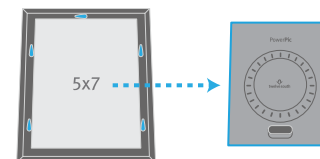


Adding a personal photo

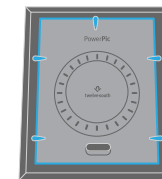
- 1 Flip Frame over and place onto a towel or soft surface. Release Charging Plate from Frame by rotating the clips on the outer edges of the frame.



- 2 Lift Charging Plate out of Frame and set to side. Place your favorite 5x7 photo into the Frame on top of glass.



- 3 Reinstall Charging Plate into Frame and secure with clips.

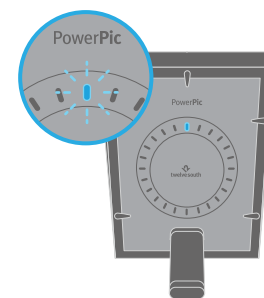


PowerPic status light

- device charging
- device fully charged
- foreign object detected

The light on the back of PowerPic lets you know the charging status of your device.

This light also alerts you to foreign objects (like metallic cards) between your device and PowerPic that could affect charging.



Additional notes & specs

The foreign object detection light alerts you to objects between your device and PowerPic that could affect charging. This helps to prevent the charger from emitting unnecessary power and heat that could damage your smartphone and other heat-sensitive items.

To prevent overheating and damage to your PowerPic or device:

- Do not place any foreign objects, such as metal or magnets, between the phone and PowerPic. This may interfere with charging, causing overheating or damage to the device.
- Do not place any magnetic stripes or IC chip card on the PowerPic. This may cause damage.
- Do not cover the charging base with any material or cloth. This may interfere with charging performance.
- Do not let dust accumulate on the charging stand and keep the surface clean.

FCC ID Statement

This equipment complies with Part 15 of the FCC Rules.

Operation is subject to the following two conditions:

This device may not cause harmful interference, and This device must accept any interference received, including interference that may cause undesired operation.

Any changes or modifications not expressly approved by the party responsible for compliance could void the user's authority to operate this equipment.

IC Statement

Disclaimer:

Operation is subject to the following two conditions:

This device may not cause interference, and This device must accept any interference, including interference that may cause undesired operation of the device.

PowerPic Charging Plate Tech Specs

Input connector: USB Type C

Note: Included cable is 1.5m USB Type C to USB Type A

Input: 5V=2A , 9V=1.67A

Output: 5V=1A , 6V=1.25A , 9V=1.1A

Operation Frequency: 110~205 KHZ

Modulation type: ASK

Antenna Type: Coil Antenna

Charging efficiency: 2~8mm ; 2mm max → =75% / 8mm max → =72%



FCC ID : 2AREBFM18XX
IC ID : 24385-18XX