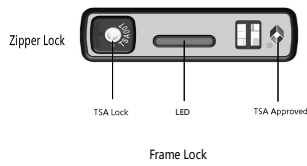




User Guide (SKE-341B)

●Know the Smart Lock



●How to Use

1. Download the App

IOS requirement: iPhone 5 or newer model

Android: Android 4.3 or newer, with Bluetooth 4.0



Scan the QR code or search "SKGSmart" in App Store to download.



Scan the QR code or search "SKGSmart" in Google Play to download.

2. Turn on Bluetooth

Make sure the Bluetooth on your phone is on, you can tap "Settings->Bluetooth"

3. Sign Up for New User/Sign in

打开 SKGSmart APP and tap the Sign up button or sign in.

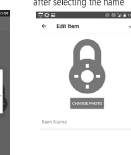
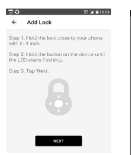
4. Pair the Lock to your phone

* Please make sure the batteries are correctly installed (AAA battery, 1.5V).

Click on icon to add new lock.

Input default password 000000

Select the top right upper corner after selecting the name



5. Use the App to lock or unlock

Open or close your lock by clicking "unlock" or "lock" button.
(LED flashing when you lock or unlock.)



6. Find your lock via App

You can click on the "Flash Lock LED": to make the lock LED flash. (Some models can make sound alert.)



7. Separation Alert

Both of your lock and phone will make sound alert when they are disconnected.
(Note: only on some lock mode)



Separation alarm

Phone Alert: The phone will make sound alert when the lock and phone are out of range.
Lock Alert: The lock will make sound alert when the lock and phone are out of range.

Auto Lock: Automatically lock when you are far away;
Automatically unlock when you are close.
(The distance may vary based on the distance from your phone.)

●Remark

- Power Supply: 4 * AAA batteries (1.5V). (Note: Battery polarities must be correctly installed.)
- The default password is 000000. You can change the password to a new one.
Password is required when you add the lock to a new account.
- You can manage multi locks by setting different names or photos.

Bluetooth function.

Trouble Shooting

Problem	Possible Cause	Solution
Fail to connect with phone	1. Bluetooth is off. 2. Phone and lock is beyond the valid distance. 3. App has crashed. 4. The lock is already connecting to other phone. 5. Bluetooth error happens.	1. Turn on the Bluetooth. 2. Put the phone and lock next to each other. 3. Restart the App or reboot your phone. 4. Disconnect the lock from other phone. 5. Restart the Bluetooth.
Unable to lock	1. Power is below 20%. 2. App has crashed.	1. Replace the battery. 2. Restart the App.
Unable to unlock	1. Batteries are not installed correctly.	1. Make sure batteries are correctly installed. LED will flash when you install the batteries.
Fail to pair	2. Phone Bluetooth is not compatible.	2. For Android phone, some phones' Bluetooth DONOT meet the Bluetooth standard. Samsung, Huawei & Xiaomi (Xiaomi Mi 4i) are tested and supported.

FCC Warning:

This equipment has been tested and found to comply with the limits for a Class B digital device, pursuant to part 15 of the FCC Rules. These limits are designed to provide reasonable protection against harmful interference in a residential installation. This equipment generates, uses and can radiate radio frequency energy and, if not installed and used in accordance with the instructions, may cause harmful interference to radio communications.

However, there is no guarantee that interference will not occur in a particular installation. If this equipment does cause harmful interference to radio or television reception, which can be determined by turning the equipment off and on, the user is encouraged to try to correct the interference by one or more of the following measures:

- Reorient or relocate the receiving antenna.
- Increase the separation between the equipment and receiver.
- Connect the equipment into an outlet on a circuit different from that to which the receiver is connected.
- Consult the dealer or an experienced radio/TV technician for help.

Caution: Any changes or modifications to this device not explicitly approved by manufacturer could void your authority to operate this equipment.

This device complies with part 15 of the FCC Rules. Operation is subject to the following two conditions:
(1) This device may not cause harmful interference, and
(2) this device must accept any interference received, including interference that may cause undesired operation.

The device has been evaluated to meet general RF exposure requirement. The device can be used in portable exposure condition without restriction.