

For NOERDEN SMART WATCH - LIFE2 / LIFE2+



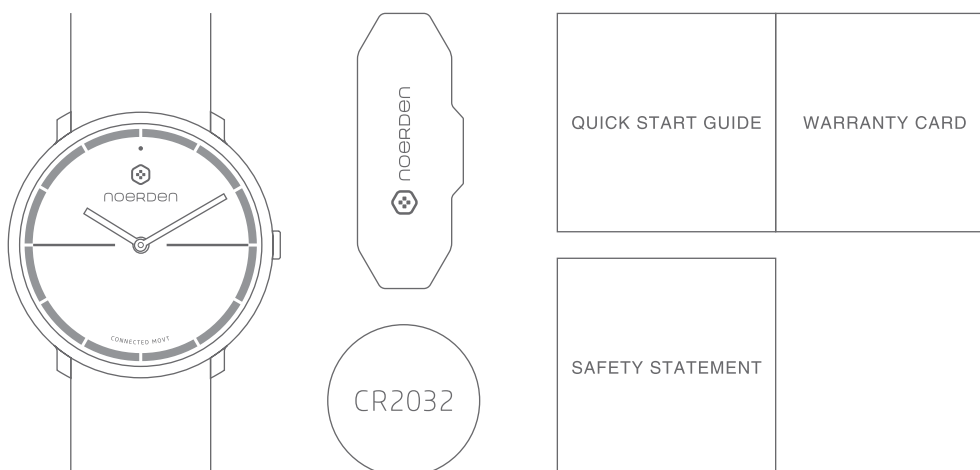
noerden
User Manual

TABLE OF CONTENTS

▪ Box contents	1
▪ Product Specifications	1
▪ Your watch	2
▪ Quick start with your smartphone	3
▪ Discover key functions	5
▪ How to change the battery	10
▪ How to change the strap	12
▪ Upgrade watch firmware	12
▪ Reset	13
▪ Declaration of conformity	13

BOX CONTENTS

- NOERDEN Smart Watch
- Battery CR2032 (pre-installed)
- Professional Watch Case Opener
- Quick Start Guide
- Warranty Card
- Safety Statement



PRODUCT SPECIFICATIONS

NOERDEN Smart Watch LIFE2/LIFE2+

- 5ATM Waterproof
- Case Diameter: 38mm
- Operating Temperature: 0°C -50°C
- Weight - LIFE2: 56.4g
- LIFE2+: 68.8g
- Strap - LIFE2: adaptable up to 220mm wrist
- LIFE2+: adaptable up to 240mm wrist
- Color - LIFE2: black, white, red, blue and navy
- LIFE2+: full black and full grey

Sensors & Technology

- Quartz Oscillator
 - Activity G-sensor: day and night movement sensor
 - Indicator Light
-

Connectivity & Compatibility

- Connectivity: Bluetooth 4.1
- Compatible Devices: iPhone 5 and above, Android devices
- Operating Systems: iOS 9.0, Android 4.3 and above

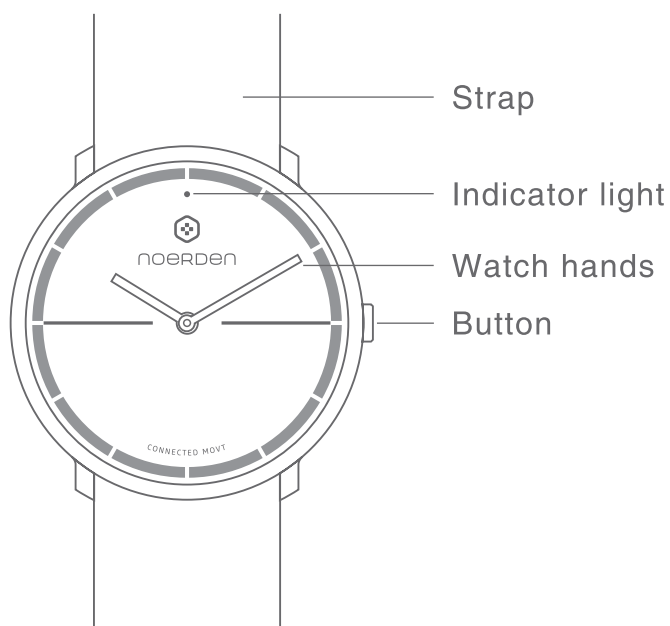
Battery

- Battery Type: button battery CR2032
- Normal Capacity: 240mAh
- Input: 3V \approx 20mA

Smart Functions & Data

- World Time Synchronization
- Camera Remote
- Music Control
- Activity Tracking
- Sleep Monitoring
- Personal Goal Tracking
- Find My Phone
- Vibration Notifications
- Call Rejection
- Silent Alarm
- Do Not Disturb

YOUR WATCH



QUICK START WITH YOUR SMARTPHONE

<http://www.noerdenfit.cn/download>



Scan the QR code to download NOERDEN APP
or search for NOERDEN
on the iOS or Android APP store.

● TURN ON YOUR WATCH

Press and hold the button for 3 seconds. The indicator light will flash quickly and the watch will vibrate. After that, your watch is automatically switched on.



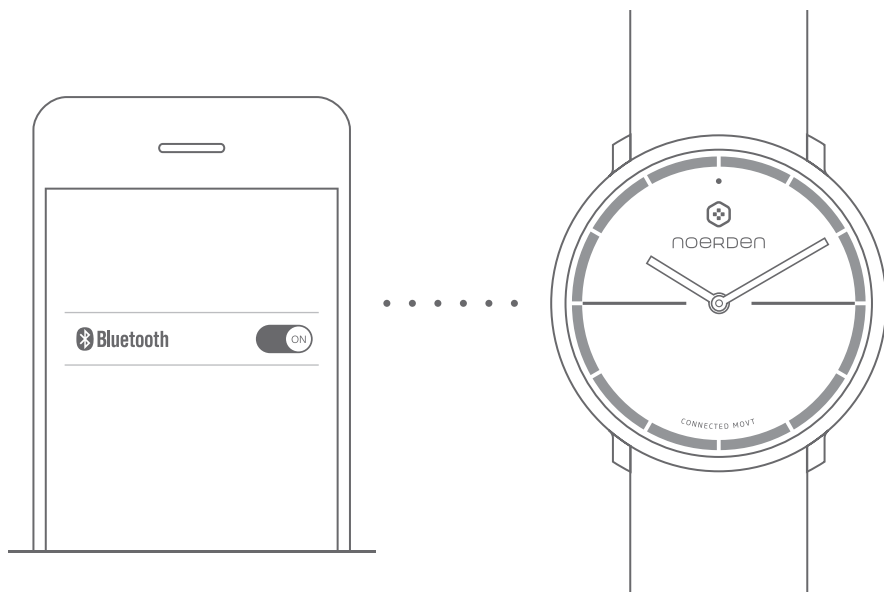
Press and hold the
button for 3 seconds



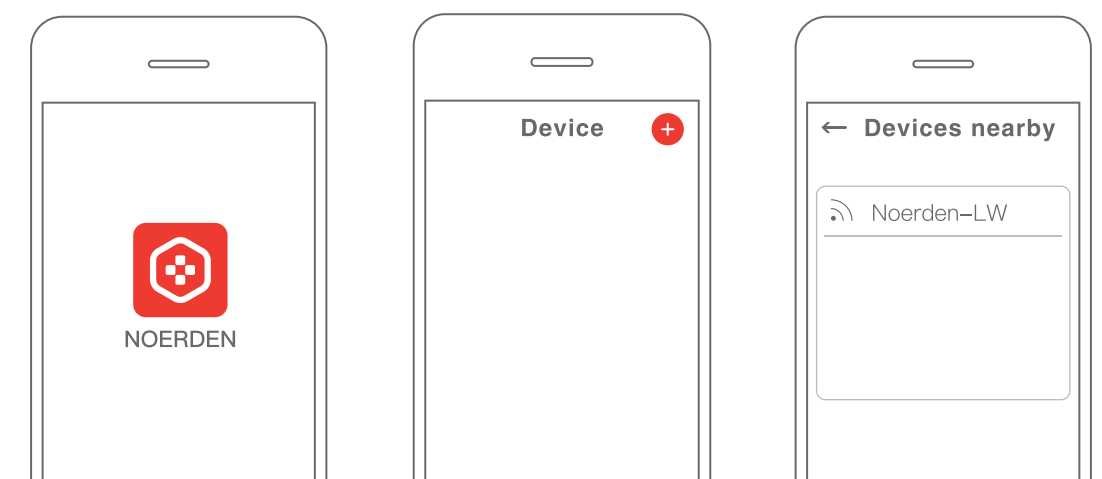
Your watch vibrates and
indicator light flashes red → ON

● CONNECT TO THE NOERDEN APP

1. Turn on your phone's Bluetooth and hold your watch close to the phone until the device is connected.



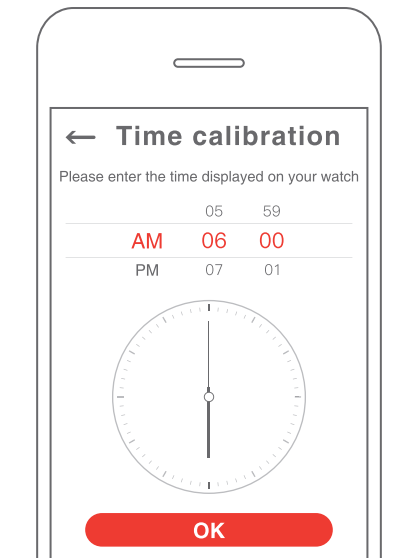
2. In NOERDEN APP, go to '**Device**' menu and click '**Add a new device**'. Follow the instructions: find your watch '**Noerden-LW**' and connect it.



● TIME CALIBRATION

When using your watch for the first time, you need to set the time of your new watch.

1. In the NOERDEN APP, go to the '**Device**' menu and then the '**Smart Time Calibration**'.
2. Enter the time displayed on your watch onto your phone's interface. The time will then automatically calibrate.



DISCOVER KEY FUNCTIONS

Bluetooth

Press the button to check the Bluetooth status of your watch.



The indicator light flashes red
→ Bluetooth is disconnected



Indicator light is green
→ Bluetooth is connected

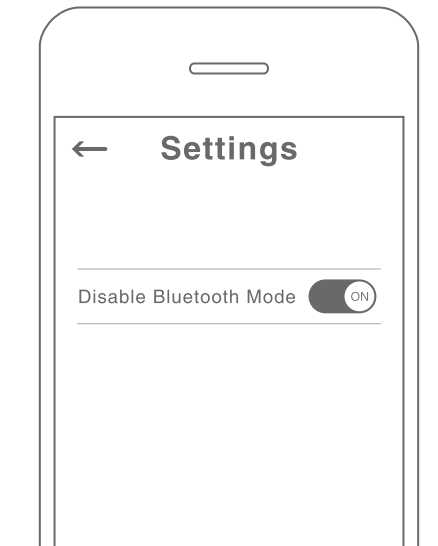


Press once

Disable Bluetooth Mode

The watch automatically starts Disable Bluetooth Mode when the bluetooth is disconnected for more than 2 hours, meaning Bluetooth is off.

You can also manually enable the Disable Bluetooth Mode in the APP.

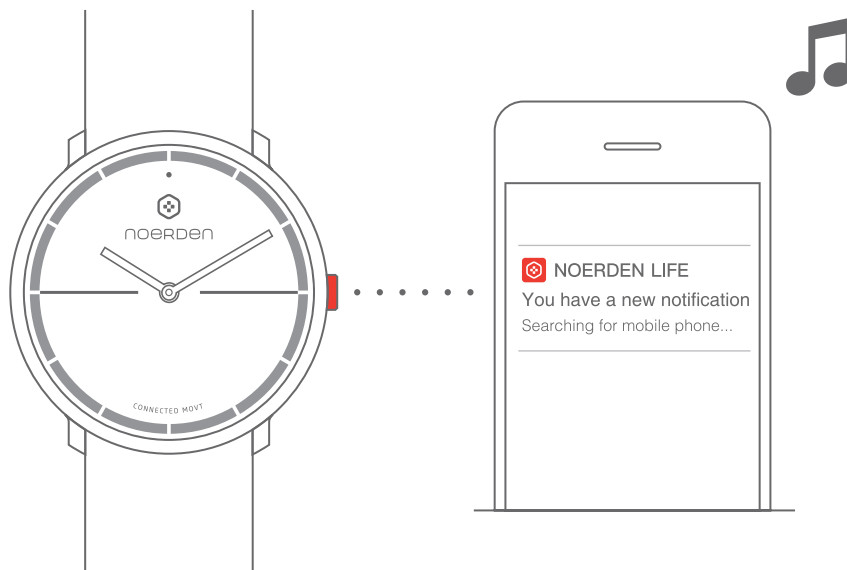


Note: When you press the button once to check the Bluetooth status, Bluetooth will automatically switch on and your watch will reconnect to your phone if it was in Disable Bluetooth Mode.



Find My Phone

Double press the button and your phone will ring.



*Note: Your watch must be connected to your phone via Bluetooth.
If your phone is on Silent Mode, it will only vibrate.*

Call Alert and Rejection

Call Alert



When you receive a call, the indicator light will flash in green and your watch will vibrate for 5 seconds.

Call Rejection

To reject the call, press the button once. The indicator light will flash in red once and your watch will vibrate once.

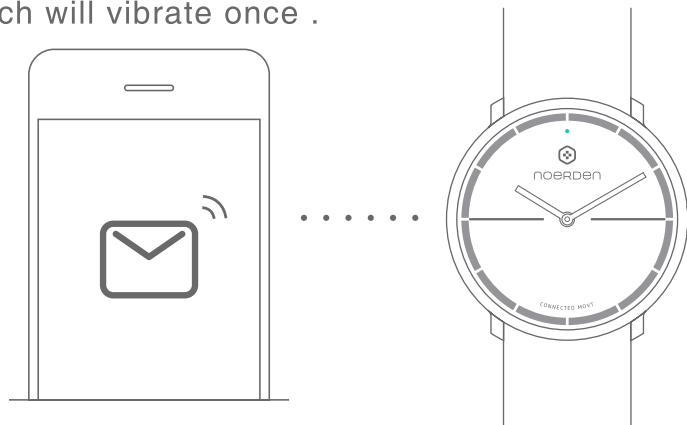


 ...   **Your watch vibrates and indicator light flashes red once**

*Note: your watch must be connected to your phone via Bluetooth.
This function must be switched ON in the 'Device' menu of the NOERDEN APP and you must accept the access.*

Messages and Notifications

When you receive a message or notification, the indicator light will flash in green once and your watch will vibrate once .



 ...   **Your watch vibrates and indicator light flashes green once**

*Note: your watch must be connected to your phone via Bluetooth.
This function must be switched ON in the 'Device' menu of the NOERDEN APP and you must accept the access.*

Silent Alarm

To wake-up gently, you can set a silent alarm time on the NOERDEN APP.

Your watch will vibrate for 8 seconds. To turn it off, press the button once. The indicator light will flash once in red and your watch will vibrate once.



Note: Your watch must be connected to your phone via Bluetooth. This function must be switched ON in the 'Device' menu of the NOERDEN APP.

Do Not Disturb

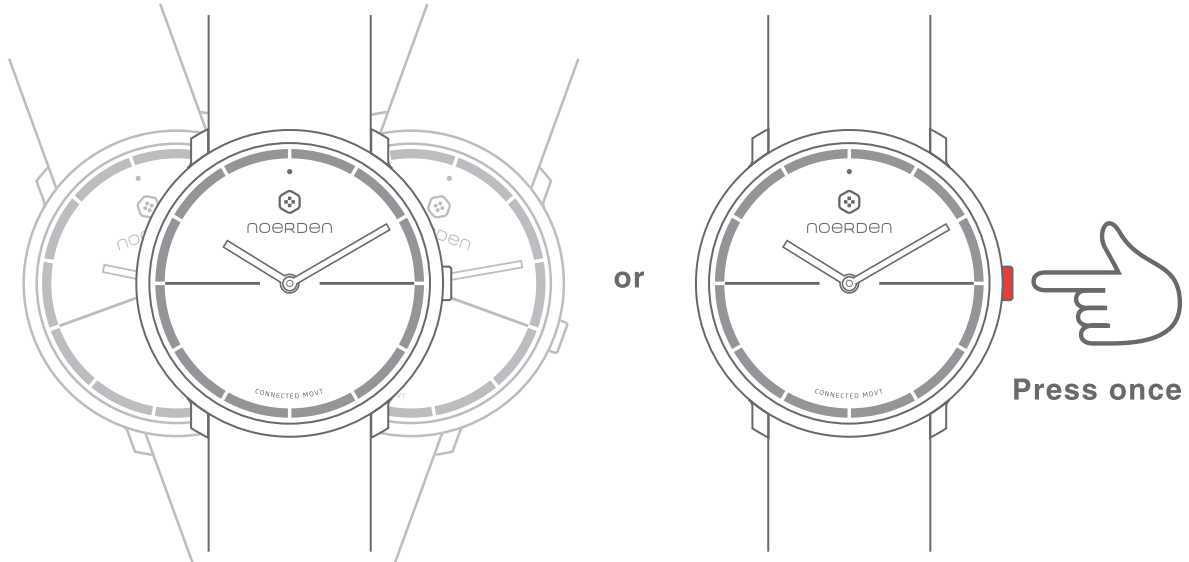
In '**Do Not Disturb**' Mode, all calls and notifications - except alarms, will be silenced. The default time is set from 11pm to 6am or you can change it in the '**Do Not Disturb**' Page in the NOERDEN APP.



Note: Your watch must be connected to your phone via Bluetooth. This function must be switched ON in the 'Device' menu of the NOERDEN APP.

Camera Remote

In the NOERDEN APP, go to the "Device" menu and then "Camera Remote". A camera page will open. Shake your watch or press the button to take a picture.



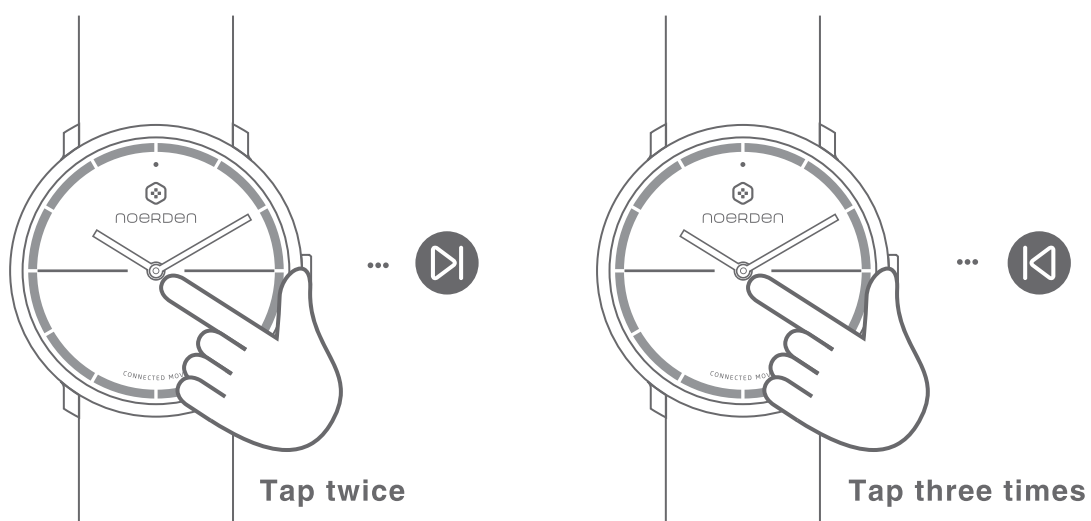
Note: Your watch must be connected to your phone via Bluetooth, and you must accept NOERDEN APP to access your phone's camera.

Music Control

In the NOERDEN APP, go to the 'Device' menu to switch on the Music Control function. After that, you can tap your watch glass to control your music.

Tap the glass twice → Play the next song

Tap the glass three times → Play previous song

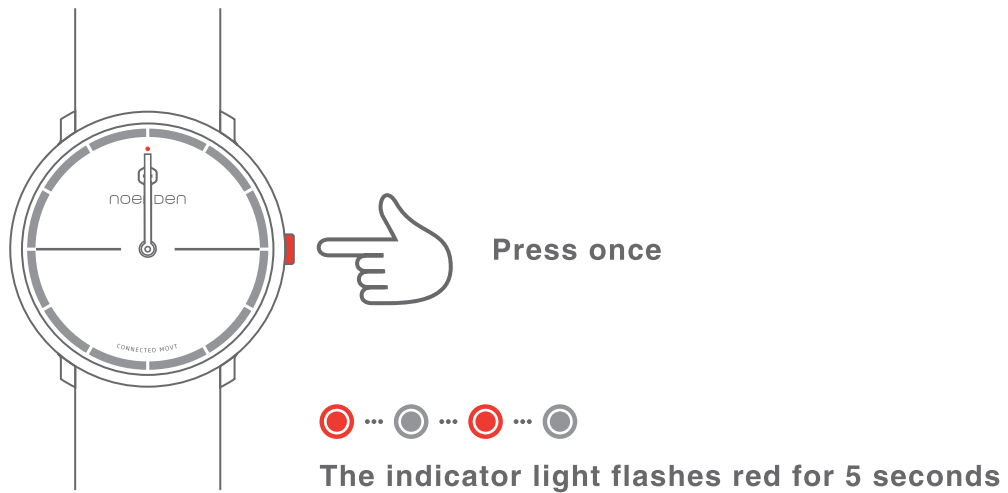


Note: Your watch must be connected to your phone via Bluetooth and you must accept the NOERDEN APP to access your music apps.

Battery

You can check the battery level of your watch in the '**Device**' menu of the NOERDEN APP.

When your watch's battery is low, the watch hands will automatically set to 12 o'clock. When this occurs, if you press your watch button, the indicator light will flash in red for 5 seconds and all smart functions will turn off.

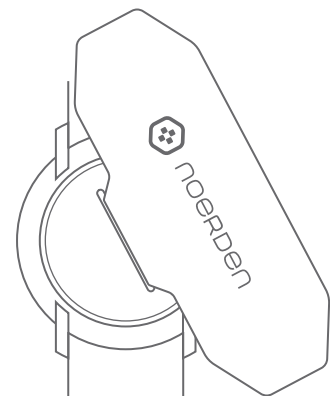


HOW TO CHANGE THE BATTERY

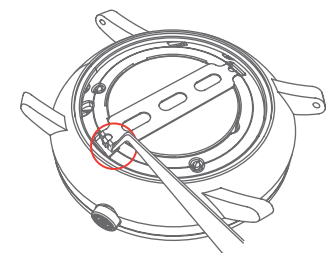
When the battery is low, your watch's Bluetooth is automatically turned OFF. To continue to enjoy all smart functions, you should change the battery as soon as possible.

We recommend you to go to a local watch shop to replace the battery CR2032. If you wish to do it yourself, you can follow the instructions below.

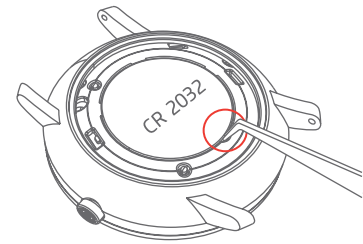
1. Open the watch case with the professional case opener.



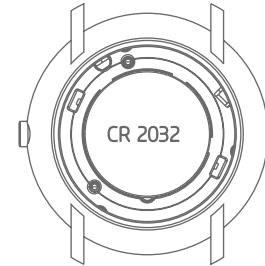
2. Take off the battery retainer.



3. Take out the old battery by using tweezers or a flat tool thinner than 2mm, carefully lift and remove the battery.

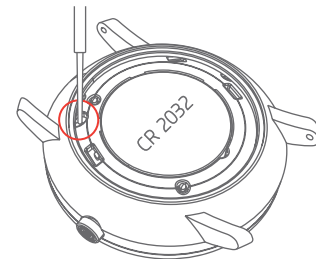


4. Install the new battery (CR2032) in the same way as removing it. Once it is properly installed, the indicator light will flash red once



Indicator light flashes red once

5. Use a sharp headed tool to gently press the reset button once, the indicator light will then flash green once.



Indicator light flashes green once

6. Use the same method to put the battery retainer back in.

7. Install the watch case and turn it until it's tight. You can then use your watch normally again!

Note:

- The warranty will be void if the battery was not changed by a professional and water damage occurs.
- When changing the battery yourself, make sure to close the case properly. If closed improperly, you risk impairing the watch's waterproof resistance.
- We suggest that you synchronize the data before changing your battery, in case of data loss.

CAUTION

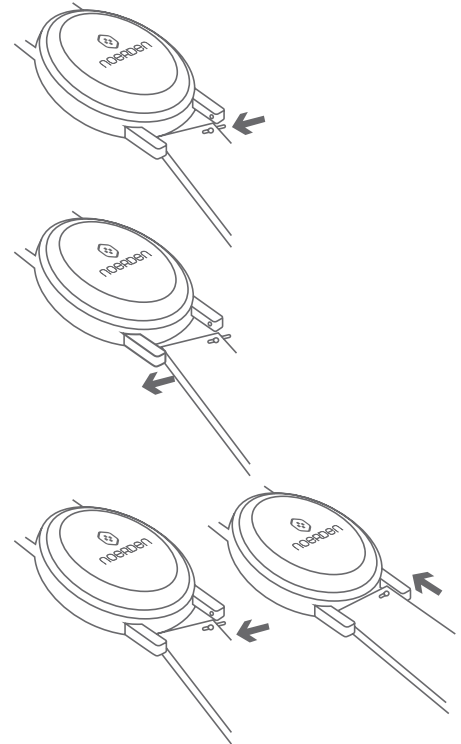
**RISK OF EXPLOSION IF BATTERY IS REPLACED BY AN INCORRECT TYPE.
DISPOSE OF USED BATTERIES ACCORDING TO THE INSTRUCTIONS.**

HOW TO CHANGE THE STRAP

1. Move the quick release spring bar to remove the strap.

2. Take your new strap and insert one side of the spring bar into the lug end.

3. Push the spring bar into the other side, your new strap is installed!



UPGRADE WATCH FIRMWARE

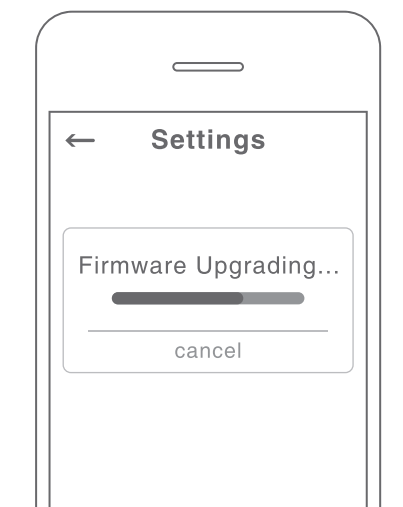
1. To update your firmware: go to the **NOERDEN APP** > **Profile** > **Settings** > **Check for firmware upgrade**.

2. Your phone will download the new firmware version and upload it to your watch.

3. During the installation, the indicator light of your watch will continuously flash in red.

4. When the indicator light stops flashing, the firmware has been upgraded successfully.

5. Check if the time of your watch is accurate, otherwise perform the time calibration.



.....



**Indicator light flashes red until
firmware upgrade is successful**

RESET

Press and hold the button for 6 seconds. The indicator light will flash in red once and the process will start.



Press and hold for 6 seconds



Indicator light flashes red once

Note: If you reset your watch to factory mode, it may delete all your data. You will have to restart your watch after the restoration.

DECLARATION OF CONFORMITY

The undersigned, Noerden (Shanghai) Information Technology Co., Ltd declares that the electrical radio equipment types of the Noerden Smart Watch, Models LIFE2/LIFE2+, comply with the 2014/53/EU directive.

The complete text is available at www.noerden.eu/support

This device complies with Part 15 of the FCC Rules. Operation is subject to the following two conditions:

- (1) This device may not cause harmful interference, and
- (2) This device must accept any interference received, including interference that may cause undesired operation.

Note: This product has been tested and found to comply with the limits for a Class B digital device, pursuant to Part 15 of the FCC Rules. These limits are designed to provide reasonable protection against harmful interference in a residential installation. This product generates, uses, and can radiate radio frequency energy and, if not installed and used in

accordance with the instructions, may cause harmful interference to radio communications. However, there is no guarantee that interference will not occur in a particular installation. If this product does cause harmful interference to radio or television reception, which can be determined by turning the equipment off and on, the user is encouraged to try to correct the interference by one or more of the following measures:

- Reorient or relocate the receiving antenna.
- Increase the separation between the equipment and receiver.
- Connect the equipment into an outlet on a circuit different from that to which the receiver is connected.
- Consult the dealer or an experienced radio/TV technician for help.

Please take attention that changes or modification not expressly approved by the party responsible for compliance could void the user's authority to operate the equipment.

This device complies with Industry Canada licence-exempt RSS standard(s). Operation is subject to the following two conditions:

- (1) this device may not cause interference, and
- (2) this device must accept any interference, including interference that may cause undesired operation of the device.

Le présent appareil est conforme aux CNR d'Industrie Canada applicables aux appareils radioexempts de licence. L'exploitation est autorisée aux deux conditions suivantes:

- (1) l'appareil ne doit pas produire de brouillage, et
- (2) l'utilisateur de l'appareil doit accepter tout brouillage radioélectrique subi, même si le brouillage est susceptible d'en compromettre le fonctionnement.

Under Industry Canada regulations, this radio transmitter may only operate using an antenna of a type and maximum (or lesser) gain approved for the transmitter by Industry Canada. To reduce potential radio interference to other users, the antenna type and its gain should be so chosen that the equivalent isotropically radiated power (e.i.r.p.) is not more than that necessary for successful communication.

Conformément à la réglementation d'Industrie Canada, le présent émetteur radio peut fonctionner avec une antenne d'un type et d'un gain maximal (ou inférieur) approuvé pour l'émetteur par Industrie Canada. Dans le but de réduire les risques de brouillage radioélectrique à l'intention des autres utilisateurs, il faut choisir le type d'antenne et son gain de sorte que la puissance isotrope rayonnée équivalente (p.i.r.e.) ne dépasse pas l'intensité nécessaire à l'établissement d'une communication satisfaisante.



www.noerden.eu

For more information,
go to the **FAQ** page
in **NOERDEN APP**.