



FCC TEST REPORT

**Test report
On Behalf of**

Wan You Innovation Technology HeBei Co.Ltd

**For
FeiDu true diversity wireless microphone**

**Model No.: FM-40, FM-10, FM-10S, FM-20, FM-20S, FM-30,
FM-30S, FM-40S, FM-40pro, FM-50, FM-50S, FM-60,
FM-60S, FM-70, FM-70S, FM-80, FM-80S, FM-90,
FM-90S, FM-100, FM-100S, FM-102, FM-102S,
FM-102N, FM-102pro, FM-103, FM-103S, FM-103pro**

FCC ID: 2AR7K-FM40N

Prepared for : Wan You Innovation Technology HeBei Co.Ltd
FangDa Science Park, Ningjin County, Xingtai City, HeBei Province,
China

Prepared By : Shenzhen HUAKE Testing Technology Co., Ltd.
1F, B2 Building, Junfeng Zhongcheng Zhizao Innovation Park, Fuhai
Street, Bao'an District, Shenzhen City, China

Date of Test: Sep. 07, 2020~ Sep. 17, 2020

Date of Report: Sep. 17, 2020

Report Number: HK2009142569-E



TEST RESULT CERTIFICATION

Applicant's name: Wan You Innovation Technology HeBei Co.Ltd
Address: FangDa Science Park, Ningjin County, Xingtai City, HeBei Province, China
Manufacture's Name: Wan You Innovation Technology HeBei Co.Ltd
Address: FangDa Science Park, Ningjin County, Xingtai City, HeBei Province, China

Product description

Trade Mark: FD
Product name.....: FeiDu true diversity wireless microphone
FM-40, FM-10, FM-10S, FM-20, FM-20S, FM-30, FM-30S, FM-40S, FM-40pro, FM-50, FM-50S, FM-60, FM-60S, FM-70, FM-70S, FM-80, FM-80S, FM-90, FM-90S, FM-100, FM-100S, FM-102, FM-102S, FM-102N, FM-102pro, FM-103, FM-103S, FM-103pro
Model and/or type reference : FM-70S, FM-80, FM-80S, FM-90, FM-90S, FM-100, FM-100S, FM-102, FM-102S, FM-102N, FM-102pro, FM-103, FM-103S, FM-103pro

Standards.....: FCC Rules and Regulations Part 15 Subpart C Section 15.236

This publication may be reproduced in whole or in part for non-commercial purposes as long as the Shenzhen HUAK Testing Technology Co., Ltd. is acknowledged as copyright owner and source of the material. Shenzhen HUAK Testing Technology Co., Ltd. takes no responsibility for and will not assume liability for damages resulting from the reader's interpretation of the reproduced material due to its placement and context.

Date of Test.....:

Date (s) of performance of tests.....: Sep. 07, 2020~ Sep. 17, 2020

Date of Issue.....: Sep. 17, 2020

Test Result.....: **Pass**

Testing Engineer :

(Gary Qian)

Technical Manager :

(Eden Hu)

Authorized Signatory :

(Jason Zhou)



TABLE OF CONTENTS

1	TEST SUMMARY	4
1.1	TEST PROCEDURES AND RESULTS	4
1.2	TEST FACILITY	4
1.3	Measurement Uncertainty	4
2	GENERAL INFORMATION	5
2.1	GENERAL DESCRIPTION OF EUT	5
2.2	Carrier Frequency of Channels	5
2.3	Operation of EUT during testing	6
2.4	DESCRIPTION OF TEST SETUP	6
2.5	Description of Support Units	6
3	TEST RESULTS AND MEASUREMENT DATA	8
3.1	CONDUCTED EMISSIONS TEST	8
3.2	RADIATED EMISSION TEST	11
3.4	Conducted Output Power	16
3.5	OCCUPIED BANDWIDTH MEASUREMENT	18
3.5	Necessary bandwidth.....	20
3.6	FREQUENCY STABILITY	24
4	PHOTOGRAPH OF TEST	26
5	PHOTOGRAPH OF EUT	28



1 TEST SUMMARY

1.1 TEST PROCEDURES AND RESULTS

Requirement	CFR 47 Section	Result
Conducted Emission	15.207	PASS
EIRP Power	15.236(d)(1)	PASS
Occupied Bandwidth Emission	15.236(f)(2)	PASS
Emission Mask	15.236(g) ETSI EN 300 422-1	PASS
Radiated Spurious Emission	15.236(g)	PASS
Frequency Stability	15.236(f)(3)	PASS

Note:

1. PASS: Test item meets the requirement.
2. Fail: Test item does not meet the requirement.
3. N/A: Test case does not apply to the test object.
4. The test result judgment is decided by the limit of test standard.

1.2 TEST FACILITY

Test Firm : Shenzhen HUAKE Testing Technology Co., Ltd.

Address 1F, B2 Building, Junfeng Zhongcheng Zhizao Innovation Park, Fuhai Street, Bao'an District, Shenzhen City, China

1.3 Measurement Uncertainty

The reported uncertainty of measurement $y \pm U$, where expanded uncertainty U is based on a standard uncertainty multiplied by a coverage factor of $k=2$, providing a level of confidence of approximately 95 %.

No.	Item	MU
1	Conducted Emission	$\pm 2.56\text{dB}$
2	RF power, conducted	$\pm 0.12\text{dB}$
3	Spurious emissions, conducted	$\pm 0.11\text{dB}$
4	All emissions, radiated(<1G)	$\pm 3.92\text{dB}$
5	All emissions, radiated(>1G)	$\pm 4.28\text{dB}$
6	Temperature	$\pm 0.1^\circ\text{C}$
7	Humidity	$\pm 1.0\%$



2 GENERAL INFORMATION

2.1 GENERAL DESCRIPTION OF EUT

Equipment	FeiDu true diversity wireless microphone
Model Name	FM-40
Serial No.	FM-10, FM-10S, FM-20, FM-20S, FM-30, FM-30S, FM-40S, FM-40pro, FM-50, FM-50S, FM-60, FM-60S, FM-70, FM-70S, FM-80, FM-80S, FM-90, FM-90S, FM-100, FM-100S, FM-102, FM-102S, FM-102N, FM-102pro, FM-103, FM-103S, FM-103pro
Trade Mark	FD
FCC ID	2AR7K-FM40N
Hardware Version:	V1.0
Software Version:	V1.2.31-2
Operation frequency	566MHz – 595.5MHz
Number of Channels	60
Antenna Type	Integral Antenna
Antenna Gain	-2dBi
Modulation Type	FM
Power Source	DC 3.7V from battery DC 5.0V from adapter/PC/others

2.2 Carrier Frequency of Channels

Channel	Frequency
0	566.0
1	566.5
2	567.0
...	...
28	580
29	580.5
30	581
...	...
57	594.5
58	595
59	595.5



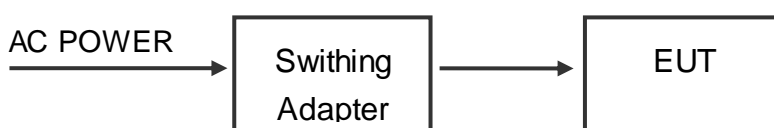
2.3 Operation of EUT during testing

Operating Mode:

Low Channel:	CH00:566.0MHz
Middle Channel:	CH29:580.5MHz
High Channel:	CH59:595.5MHz

2.4 DESCRIPTION OF TEST SETUP

Operation of EUT during conducted testing and Radiation testing:



Operation of EUT Above1GHz Radiation testing:



NOTE: When testing, the sample battery has been fully charged

2.5 Description of Support Units

The EUT has been tested as an independent unit together with other necessary accessories or support units. The following support units or accessories were used to form a representative test configuration during the tests.

Description	Model No.	Manufacturer	Remark	Certificate
Receiver Unit	RX	Wan You Innovation Technology HeBei Co.Ltd	Provided by applicant	SDOC
Adapter	Model: HW-050500DFQ Input:100-240V,50/60Hz, 0.5A Output: 5VDC	/	Provided by lab	SDOC

- Note:** 1. All the equipment/cables were placed in the worst-case configuration to maximize the emission during the test.
2. Grounding was established in accordance with the manufacturer's requirements and conditions for the intended use.
3. For conducted measurements (Output Power, 6dB Emission Bandwidth, Power Spectral Density, Spurious Emissions), the antenna of EUT is connected to the test equipment via temporary antenna connector, the antenna connector is soldered on the antenna port of EUT, and the temporary antenna connector is listed in the Test Instruments.

**2.6 MEASUREMENT INSTRUMENTS LIST**

Item	Equipment	Manufacturer	Model No.	Serial No.	Last Cal.	Cal. Interval
1.	L.I.S.N. Artificial Mains Network	R&S	ENV216	HKE-002	Dec. 26, 2019	1 Year
2.	Receiver	R&S	ESCI 7	HKE-010	Dec. 26, 2019	1 Year
3.	RF automatic control unit	Tonscend	JS0806-2	HKE-060	Dec. 26, 2019	1 Year
4.	Spectrum analyzer	R&S	FSP40	HKE-025	Dec. 26, 2019	1 Year
5.	Spectrum analyzer	Agilent	N9020A	HKE-048	Dec. 26, 2019	1 Year
6.	Preamplifier	Schwarzbeck	BBV 9743	HKE-006	Dec. 26, 2019	1 Year
7.	EMI Test Receiver	R&S	ESCI 7	HKE-010	Dec. 26, 2019	1 Year
8.	Bilog Broadband Antenna	Schwarzbeck	VULB9163	HKE-012	Dec. 26, 2019	1 Year
9.	Loop Antenna	Schwarzbeck	FMZB 1519 B	HKE-014	Dec. 26, 2019	1 Year
10.	Horn Antenna	Schwarzbeck	9120D	HKE-013	Dec. 26, 2019	1 Year
11.	Pre-amplifier	EMCI	EMC051845SE	HKE-015	Dec. 26, 2019	1 Year
12.	Pre-amplifier	Agilent	83051A	HKE-016	Dec. 26, 2019	1 Year
13.	EMI Test Software EZ-EMC	Tonscend	JS1120-B Version	HKE-083	/	N/A
14.	Power Sensor	Agilent	E9300A	HKE-086	Dec. 26, 2019	1 Year
15.	Spectrum analyzer	Agilent	N9020A	HKE-048	Dec. 26, 2019	1 Year
16.	Signal generator	Agilent	N5182A	HKE-029	Dec. 26, 2019	1 Year
17.	Signal Generator	Agilent	83630A	HKE-028	Dec. 26, 2019	1 Year
18.	Shielded room	Shiel Hong	4*3*3	HKE-039	Dec. 26, 2019	3 Year
19.	Power Meter	R&S	NRVD	SEL0069	Dec. 26, 2019	1 Year
20.	High Gain Antenna	Schwarzbeck	LB-180400KF	HKE-054	Dec. 26, 2019	1 Year
21.	RF COMMUNICATION TEST SET	HP	8920A	HKE-129	Dec. 26, 2019	1 Year



3 TEST RESULTS AND MEASUREMENT DATA

3.1 CONDUCTED EMISSIONS TEST

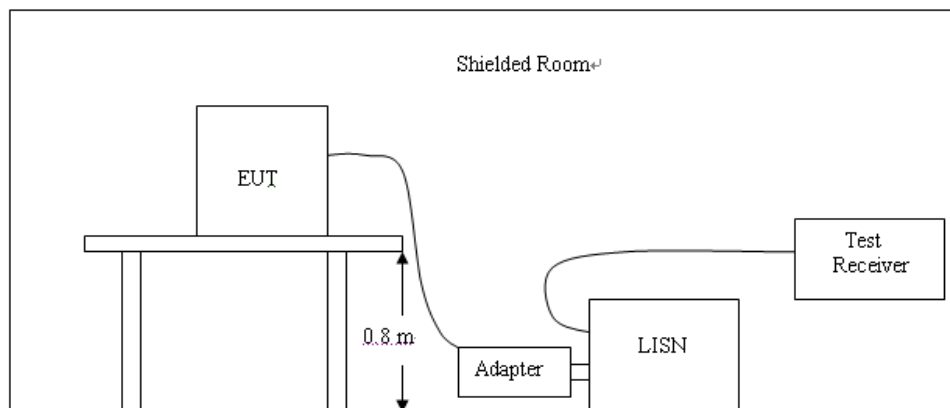
LIMIT

According to FCC CFR Title 47 Part 15 Subpart C Section 15.207 and RSS Gen 8.8, AC Power Line Conducted Emissions Limits for Licence-Exempt Radio Apparatus as below:

Frequency range (MHz)	Limit (dBuV)	
	Quasi-peak	Average
0.15-0.5	66 to 56*	56 to 46*
0.5-5	56	46
5-30	60	50

* Decreases with the logarithm of the frequency.

TEST CONFIGURATION



TEST PROCEDURE

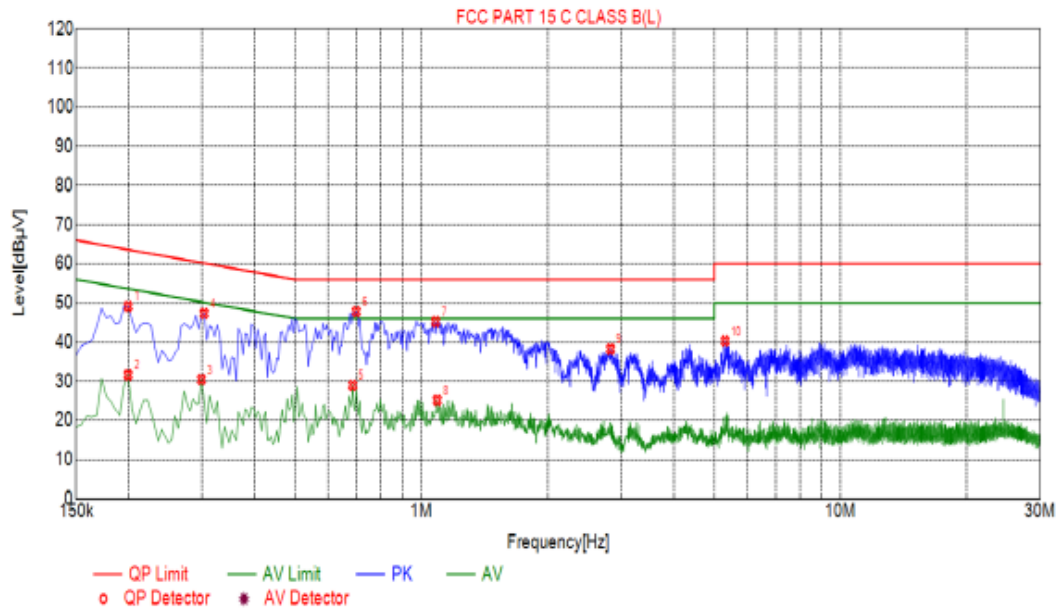
1. The equipment was set up as per the test configuration to simulate typical actual usage per the user's manual. The EUT is a tabletop system; a wooden table with a height of 0.8 meters is used and is placed on the ground plane as per ANSI C63.10:2013.
2. Support equipment, if needed, was placed as per ANSI C63.10:2013
3. All I/O cables were positioned to simulate typical actual usage as per ANSI C63.10:2013.
4. The adapter received AC120V/60Hz power through a Line Impedance Stabilization Network (LISN) which supplied power source and was grounded to the ground plane.
5. All support equipments received AC power from a second LISN, if any.
6. The EUT test program was started. Emissions were measured on each current carrying line of the EUT using a spectrum Analyzer / Receiver connected to the LISN powering the EUT. The LISN has two monitoring points: Line 1 (Hot Side) and Line 2 (Neutral Side). Two scans were taken: one with Line 1 connected to Analyzer / Receiver and Line 2 connected to a 50 ohm load; the second scan had Line 1 connected to a 50 ohm load and Line 2 connected to the Analyzer / Receiver.



7. Analyzer / Receiver scanned from 150 KHz to 30MHz for emissions in each of the test modes.
8. During the above scans, the emissions were maximized by cable manipulation.

TEST RESULTS

Test Specification: Line



Suspected List								
NO.	Freq. [MHz]	Level [dBμV]	Factor [dB]	Limit [dBμV]	Margin [dB]	Reading [dBμV]	Detector	Type
1	0.1995	49.15	20.03	63.63	14.48	29.12	PK	L
2	0.1995	31.63	20.03	53.63	22.00	11.60	AV	L
3	0.2985	30.47	20.04	50.28	19.81	10.43	AV	L
4	0.3030	47.32	20.04	60.16	12.84	27.28	PK	L
5	0.6855	29.02	20.05	46.00	16.98	8.97	AV	L
6	0.6990	47.80	20.05	56.00	8.20	27.75	PK	L
7	1.0815	45.22	20.07	56.00	10.78	25.15	PK	L
8	1.0905	25.16	20.07	46.00	20.84	5.09	AV	L
9	2.8275	38.25	20.21	56.00	17.75	18.04	PK	L
10	5.3070	40.29	20.26	60.00	19.71	20.03	PK	L

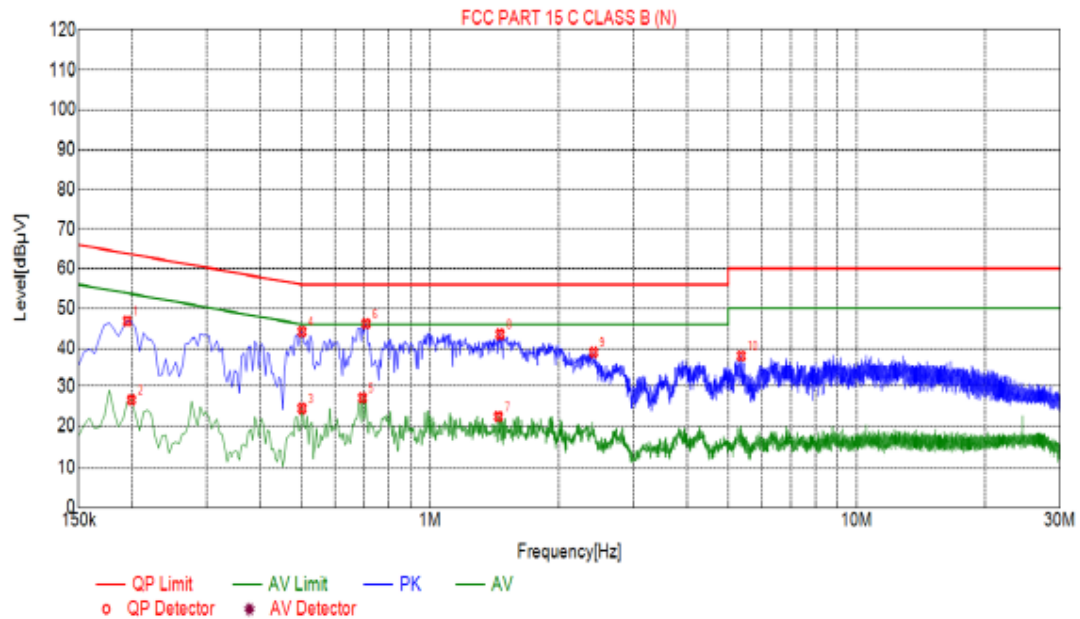
Remark: $\text{Margin} = \text{Limit} - \text{Level}$

Correction factor = Cable lose + LISN insertion loss

Level = Test receiver reading + correction factor



Test Specification: Neutral



Suspected List								
NO.	Freq. [MHz]	Level [dBμV]	Factor [dB]	Limit [dBμV]	Margin [dB]	Reading [dBμV]	Detector	Type
1	0.1950	46.80	20.03	63.82	17.02	26.77	PK	N
2	0.1995	26.54	20.03	53.63	27.09	6.51	AV	N
3	0.5010	24.42	20.04	46.00	21.58	4.38	AV	N
4	0.5010	44.11	20.04	56.00	11.89	24.07	PK	N
5	0.6945	27.04	20.05	46.00	18.96	6.99	AV	N
6	0.7080	46.09	20.05	56.00	9.91	26.04	PK	N
7	1.4480	22.36	20.10	46.00	23.64	2.26	AV	N
8	1.4595	43.48	20.10	56.00	12.52	23.38	PK	N
9	2.4180	38.94	20.18	56.00	17.06	18.76	PK	N
10	5.3655	38.03	20.26	60.00	21.97	17.77	PK	N

Remark: $\text{Margin} = \text{Limit} - \text{Level}$

Correction factor = Cable lose + LISN insertion loss

Level = Test receiver reading + correction factor

Notes:

1. An initial pre-scan was performed on the line and neutral lines with peak detector.
2. Quasi-Peak and Average measurement were performed at the frequencies with maximized peak emission.
3. Final Level = Receiver Read level + LISN Factor + Cable Loss.

If the average limit is met when using a quasi-peak detector receiver, the EUT shall be deemed to meet both limits and measurement with the average detector receiver is unnecessary.

3.2 RADIATED EMISSION TEST

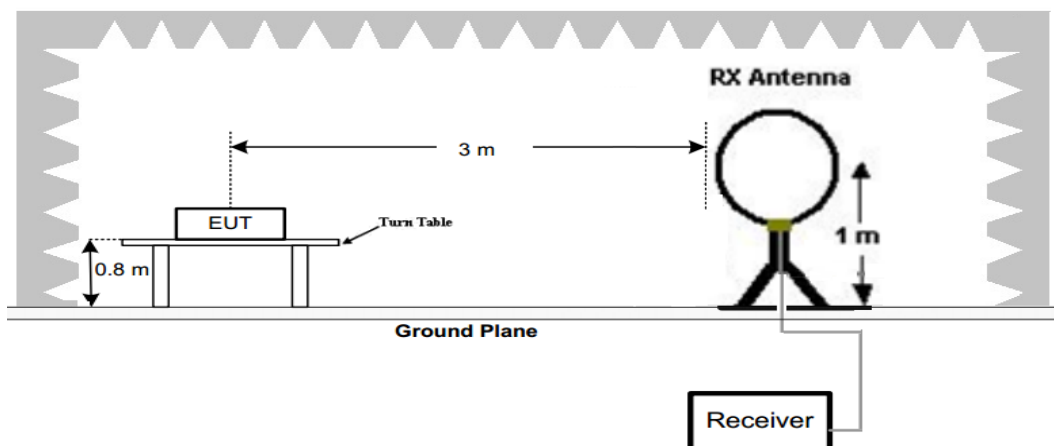
Limit

according to 15.236(g)--Wireless microphones in the 25 MHz to 3 GHz frequency range; Part 1: Technical characteristics and methods of measurement. Emissions outside of this band shall comply with the limits specified in section 8.4 of ETSI EN 300 422-1 V1.4.2,

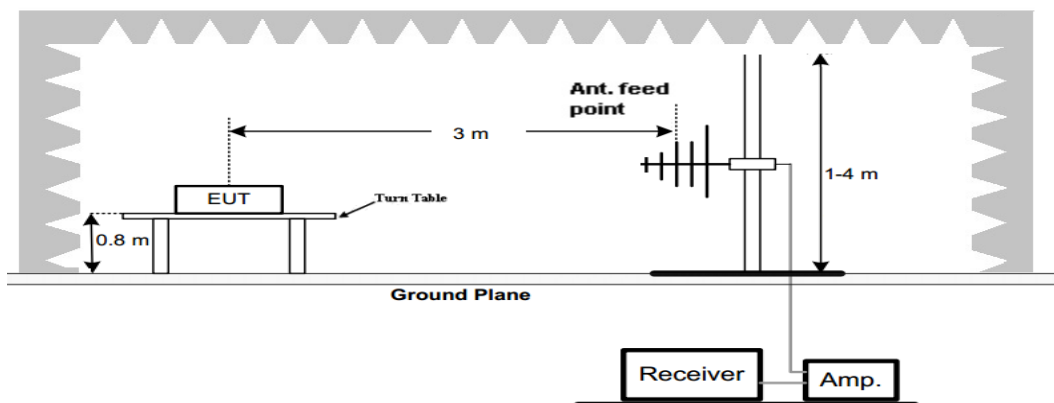
State	Frequency		
	47 MHz to 74 MHz 87,5 MHz to 137 MHz 174 MHz to 230 MHz 470 MHz to 862 MHz	Other Frequencies below 1 000 MHz	Frequencies above 1 000 MHz
Operation	4 nW	250 nW	1 μ W
Standby	2 nW	2 nW	20 nW

TEST CONFIGURATION

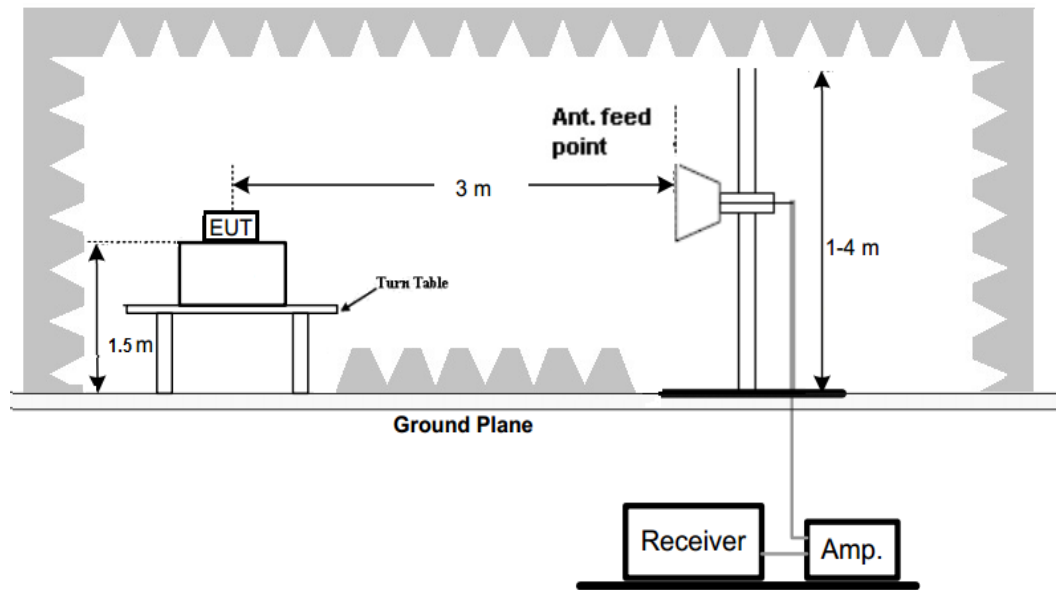
(A) Radiated Emission Test Set-Up, Frequency Below 30MHz



(B) Radiated Emission Test Set-Up, Frequency below 1000MHz



(C) Radiated Emission Test Set-Up, Frequency above 1000MHz



Frequency :9kHz-30MHz

RBW=10KHz,

VBW =30KHz

Sweep time= Auto

Trace = max hold

Detector function = peak

Frequency :30MHz-1GHz

RBW=120KHz,

VBW=300KHz

Sweep time= Auto

Trace = max hold

Detector function = peak

Frequency :Above 1GHz

RBW=1MHz,

VBW=3MHz(Peak), 10Hz(AV)

Sweep time= Auto

Trace = max hold

QP Detector function = peak, AV

Test Procedure

- 1.The setup of EUT is according with per TIA/EIA Standard 603 measurement procedure.
- 2.The measurement antenna was placed at a distance of 3 meters from the EUT. During the tests, the antenna height and polarization as well as EUT azimuth were varied in order to identify the maximum level of emissions from the EUT. The test was performed by placing the EUT on 3-orthogonal axis.
- 3.The frequency range up to tenth harmonic of the fundamental frequency was investigated.
- 4.Remove the EUT and replace it with substitution antenna. A signal generator was connected to the substitution antenna by a non-radiating cable. The absolute levels of the spurious emissions were measured by the substitution.

$$\text{Spurious attenuation limit in dB} = 43 + 10 \log_{10} (\text{power in Watts})$$

**TEST RESULTS**

Below 30MHz Test Results:

NO.	Frequency (MHz)	Reading (dBm)	Level (dBm)	Limit (dBm)	Margin (dB)	Factor (dB)	Polarity
1	--	--	--	--	--	--	--
2	--	--	--	--	--	--	--

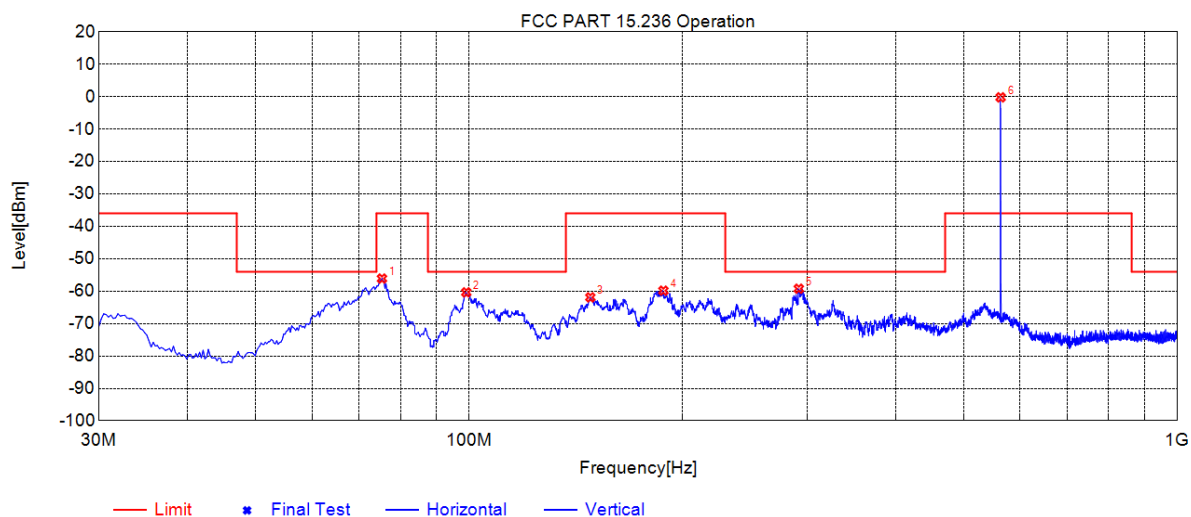
NOTE:

Radiated emission test from 9KHz to 10th harmonic of fundamental was verified, and no emission found except system noise floor (more than 20dB below the limit) in 9KHz to 30MHz and not recorded in this report.

30MHz--1GHz Test Results:

(only show the worst -low channel results)

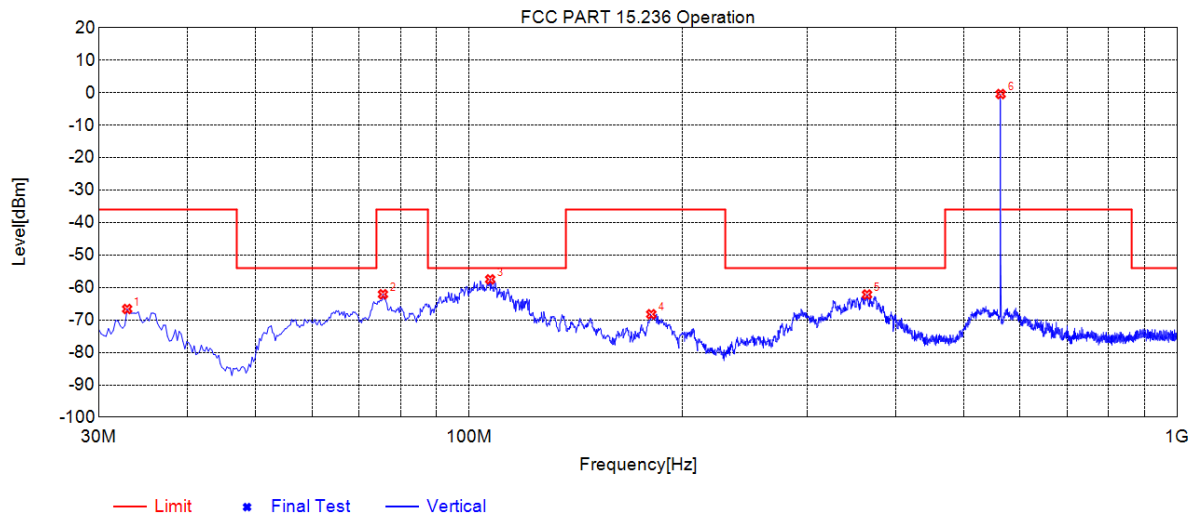
Antenna polarity: H

**Suspected List**

NO.	Freq. [MHz]	Reading [dBm]	Level [dBm]	Limit [dBm]	Margin [dB]	Factor [dB]	Polarity
1	75.3475	-59.40	-56.11	-36.00	20.11	3.29	Horizontal
2	99.1125	-61.16	-60.36	-54.00	6.36	0.80	Horizontal
3	148.340	-64.25	-61.90	-36.00	25.90	2.35	Horizontal
4	188.110	-58.12	-59.85	-36.00	23.85	-1.73	Horizontal
5	292.142	-62.22	-59.24	-54.00	5.24	2.98	Horizontal
6	566.015	-5.62	-0.28	-36.00	-35.72	5.34	Horizontal



Antenna polarity: V

**Suspected List**

NO.	Freq. [MHz]	Reading [dBm]	Level [dBm]	Limit [dBm]	Margin [dB]	Factor [dB]	Polarity
1	32.9100	-68.53	-66.61	-36.00	30.61	1.92	Vertical
2	75.5900	-58.35	-62.08	-36.00	26.08	-3.73	Vertical
3	107.115	-68.49	-57.49	-54.00	3.49	11.00	Vertical
4	180.835	-64.84	-68.23	-36.00	32.23	-3.39	Vertical
5	364.650	-63.88	-62.16	-54.00	8.16	1.72	Vertical
6	566.015	-4.89	-0.49	-36.00	-35.51	4.40	Vertical

Remark:

The highest point is main frequency signal, which is not required to be specified by the basic limit.

Margin = Limit – Level

Level=Test receiver reading + factor

Factor= Antenna factor + cable loss- Amp factor

Above 1GHz Test Results:

Frequency (MHz)	Reading (dBm)	Level (dBm)	Limit (dBm)	Margin (dB)	Factor (dB)	Polarity
1132	-43.62	-35.39	-30	5.39	8.23	H
3566	-45.76	-41.63	-30	11.63	4.13	H
2264	-49.95	-52.30	-30	22.30	-2.35	H
1132	-44.06	-35.83	-30	5.83	8.23	V
3566	-45.50	-41.37	-30	11.37	4.13	V
2264	-50.54	-52.89	-30	22.89	-2.35	V

Remark:

(1) Other emissions are attenuated 20dB below the limits, so it does not recorded in the report

(2) * denotes emission frequency which appearing within the Restricted Bands specified in provision of 15.205, then the general radiated emission limits in 15.209 apply.

(3) The IF bandwidth of EMI Test Receiver between 30MHz to 1GHz was 120KHz, 1 MHz for measuring above 1 GHz, below 30MHz was 10KHz.



Standby mode:

NO.	Frequency (MHz)	Reading (dBm)	Level (dBm)	Limit (dBm)	Margin (dB)	Factor (dB)	Polarity
1	--	--	--	--	--	--	--
2	--	--	--	--	--	--	--

NOTE:

Radiated emission test from 30MHz to 10th harmonic of fundamental was verified, and no emission found except system noise floor (more than 20dB below the limit) in 30MHz to 8GHz and not recorded in this report.

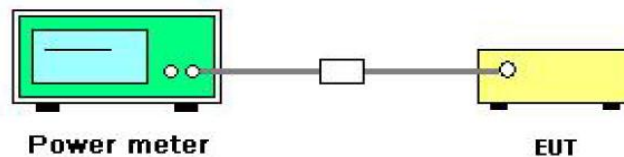


3.4 Conducted Output Power

Limit

According to FCC 15.236(d)(1), for low power auxiliary station operating in the 470-608, and 614-698 MHz bands, In the bands allocated and assigned for broadcast television and in the 600 MHz service band: 50 mW EIRP

TEST CONFIGURATION

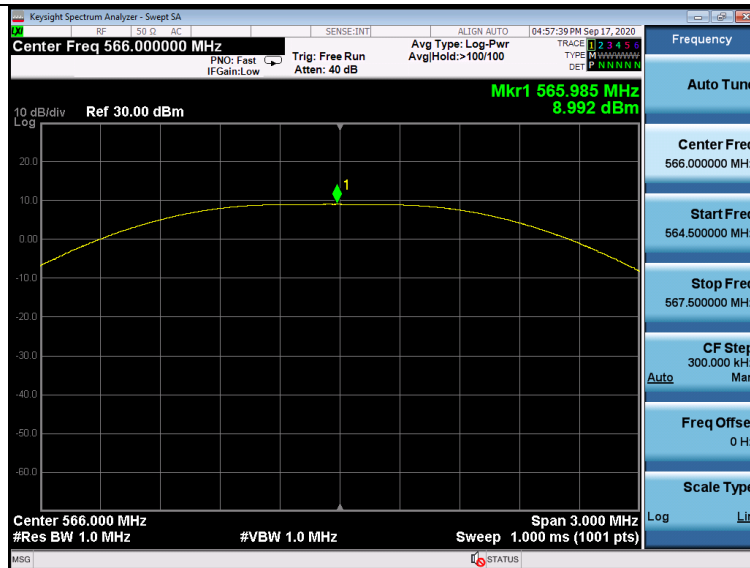


Test Procedure:

1. The maximum peak output power was measured with a Spectrum Analyzer connected to the antenna terminal while EUT was operating in unmodulated situation.
2. Power was supplied to the battery input connector a power supply. The power supply was set for +3.0VDC. The Spectrum Analyzer was connected at antenna terminal to measure RF power of the carrier.
3. A Multimeter was connected in series with final RF Stage to measure the current; A Multimeter was used to measure final RF Stage supply voltage. Then the voltage v.s. current of the final RF Stage can be showed.

Test Results:

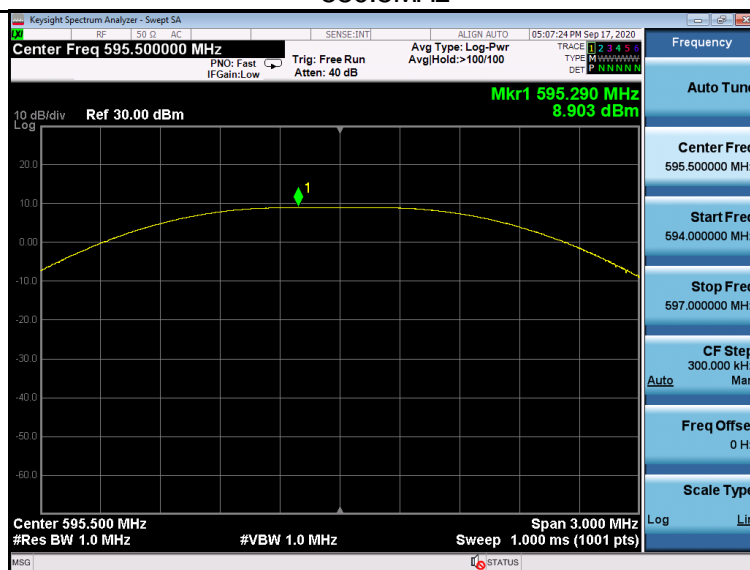
Test Channel	Frequency (MHz)	Conducted Output Power (dBm)	ANT Gain (dBi)	EIRP (dBm)	Limit (dBm)	Result
CH00	566.0MHz	8.992	-2.0	6.992	17	PASS
CH29	580.5MHz	8.896	-2.0	6.896		PASS
CH59	595.5MHz	8.903	-2.0	6.903		PASS



566.0MHz



580.5MHz



595.5MHz



3.5 OCCUPIED BANDWIDTH MEASUREMENT

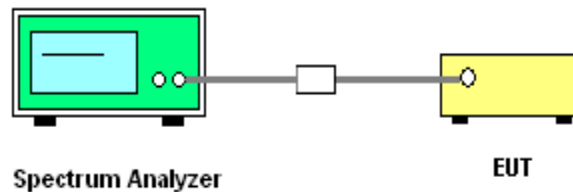
Limit

According to FCC 15.236(f)(2), The operating frequency within a permissible band of operation as defined in paragraph (c) must comply with the following requirements.

- (1) The frequency selection shall be offset from the upper or lower band limits by 25 kHz or an integral multiple thereof.
- (2) One or more adjacent 25 kHz segments within the assignable frequencies may be combined to form a channel whose maximum bandwidth shall not exceed 200 kHz. The operating bandwidth shall not exceed 200 kHz.

Emissions within the band from one megahertz below to one megahertz above the carrier frequency shall comply with the emission mask in Section 8.3 of ETSI EN 300 422-1 V1.4.2 (2011-08) (incorporated by reference, see §15.38). Emissions outside this band shall comply with the limit specified at the edges of the ETSI mask

TEST CONFIGURATION

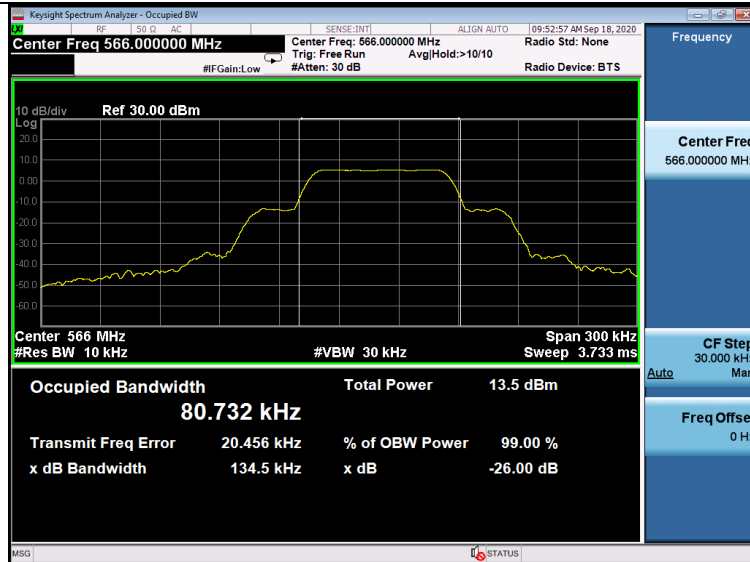


Test Procedure:

According to TIA-603 for additional Test Set-Up procedures, the occupied bandwidth of emission was measured with a Spectrum Analyzer connected to the antenna terminal while EUT was operating in 2.5kHz tone at an input level 16 dB greater than that necessary to produce 50 percent modulation. Then mark the -26dB Bandwidth and record it.

Test Results:

Test Channel	Frequency (MHz)	-26Bandwidth (kHz)	99%Bandwidth (kHz)	Limit (kHz)	Result
CH00	566.0MHz	134.5	80.732	200	PASS
CH29	580.5MHz	135.6	81.539		PASS
CH59	595.5MHz	135.1	82.950		PASS



566.0MHz



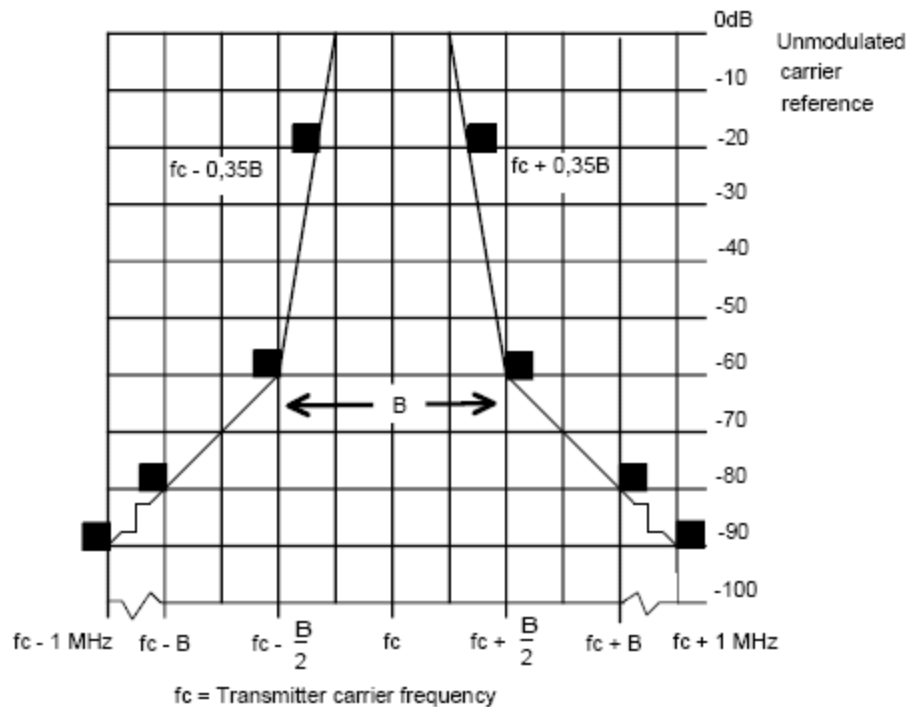
580.5MHz



595.5MHz

3.5 Necessary bandwidth

Limit

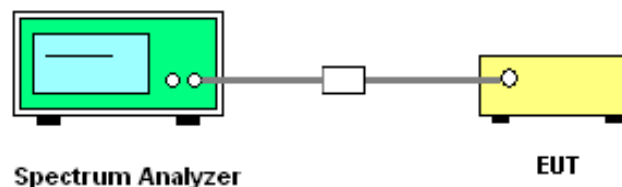


Standard Applicable

According to §15.236 (g) Emissions within the band from one megahertz below to one megahertz above the carrier frequency shall comply with the emission mask in §8.3 of ETSI EN 300 422-1 V1.4.2 (2011-08), Electromagnetic compatibility and Radio spectrum Matters (ERM); Wireless microphones in the 25 MHz to 3 GHz frequency range; Part 1: Technical characteristics and methods of measurement. Emissions outside of this band shall comply with the limits specified in section 8.4 of ETSI EN 300 422-1 V1.4.2 (2011-08).

According to ETSI EN 300 422-2 V2.1.1 section 8.3, the transmitter output spectrum shall be within the mask defined in the following figure.

TEST CONFIGURATION



Test Procedure:

The arrangement of test equipment as shown in figure B.1 shall be used. Note that the noise meter conforms to (quasi peak) without weighting filter (flat).

With the Low Frequency (LF) audio signal generator set to 500 Hz, the audio input level to the DUT shall be adjusted to 8 Db below the limiting threshold (-8 Db (lim)) as declared by the manufacturer.

The corresponding audio output level from the demodulator shall be measured and recorded.



The input impedance of the noise meter shall be sufficiently high to avoid more than 0,1 Db change in input level when the meter is switched between input and output.

The audio input level shall be increased by 20 Db, i.e. to +12 Db (lim), and the corresponding change in output level shall be measured.

It shall be checked that the audio output level has increased by ≤ 10 Db.

If this condition is not met, the initial audio input level shall be increased from -8 Db (lim) in 1 Db steps until the above condition is fulfilled, and the input level recorded in the test report. This level replaces the value derived from the manufacturer's declaration and is defined as -8 Db (lim).

Measure the input level at the transmitter required to give +12 Db (lim).

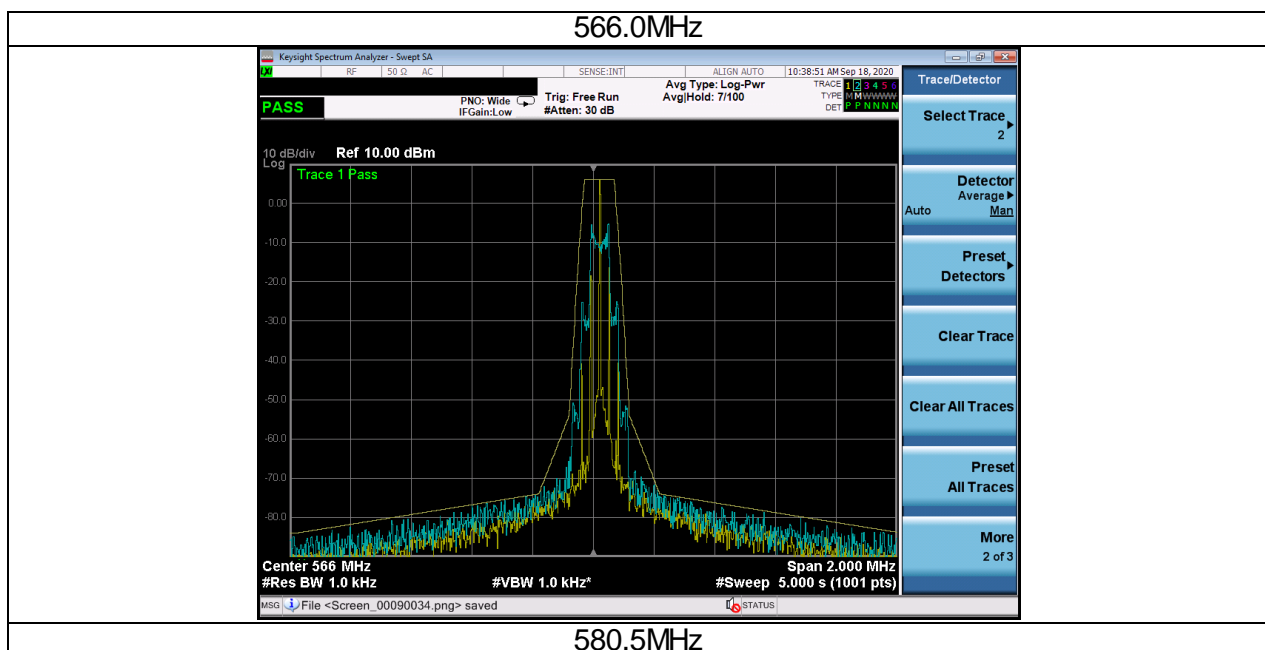
The LF generator shall be replaced with the weighted noise source to Recommendation ITU-R BS.559-2 [i.3], band-limited to 15 kHz as described in IEC 60244-13 [2], and the level shall be adjusted such that the measured input to the transmitter corresponds to +12 Db (lim).

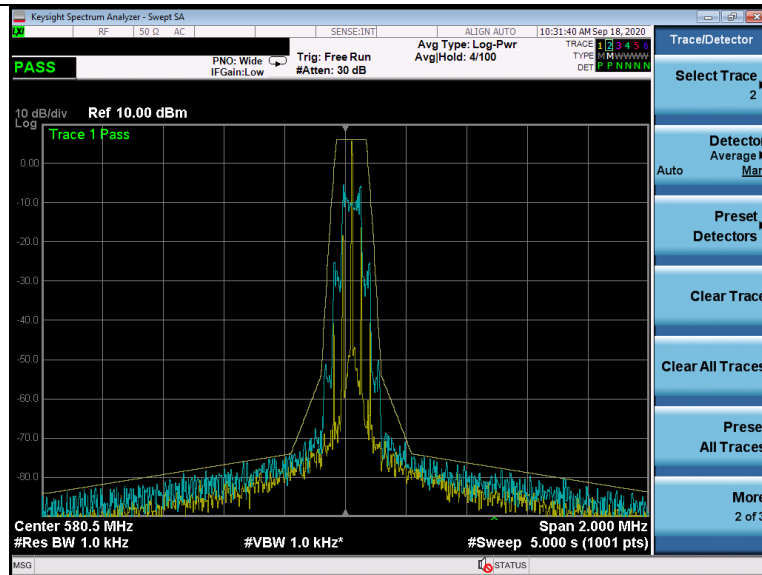
If the transmitter incorporates any ancillary coding or 21signaling channels (e.g. pilot-tones), these shall be enabled prior to any spectral measurements.

If the transmitter incorporates more than one audio input, e.g. stereo systems, the second and subsequent channels shall be simultaneously driven from the same noise source, attenuated to a level of -6 Db (lim).

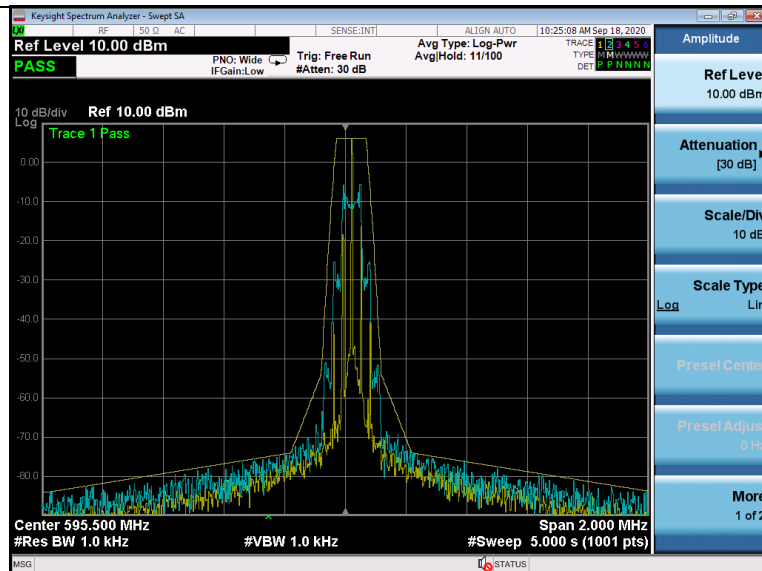
- centre frequency: f_c : Transmitter (Tx) nominal frequency;
- dispersion (Span): $f_c - 1$ MHz to $f_c + 1$ MHz;
- Resolution BandWidth (RBW): 1 kHz;
- Video BandWidth (VBW): 1 kHz;
- detector : Peak hold.

Test Result





595.5MHz



**-90 dBc point test result:****566.0MHz****580.5MHz****595.5MHz**



3.6 FREQUENCY STABILITY

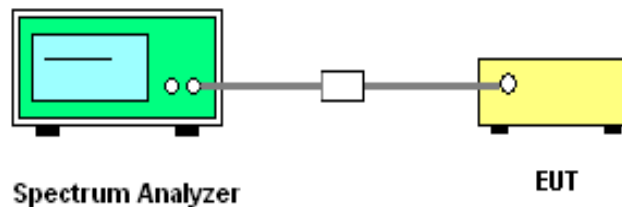
Limit

$\pm 50\text{ppm}$

Standard Applicable

According to FCC 15.236(f)(3), The frequency tolerance of the carrier signal shall be maintained within $\pm 0.005\%$ of the operating frequency over a temperature variation of -20 degrees to $+50$ degrees C at normal supply voltage, and for a variation in the primary supply voltage from 85% to 115% of the rated supply voltage at a temperature of 20 degrees C. Battery operated equipment shall be tested using a new battery.

TEST CONFIGURATION



Test Procedure:

1. Setup the configuration of the ambient temperature from -20°C to 50°C with sufficient time. And measure the different power of the EUT with an artificial power from highest to end point voltage.
2. Set frequency counter center frequency to the right frequency needs to be measured band.

Test Result

Test frequency (MHz)	Test Conditions		Measure Frequency (MHz)	Frequency Error		Limit ppm	Result
	Voltage (V)	Temperature ($^{\circ}\text{C}$)		(MHz)	ppm		
566MHz	N	N	566.0124	0.0124	21.9708	$\pm 50\text{ppm}$	PASS
		L	566.0125	0.0125	22.0642		
		H	566.0139	0.0139	24.5460		
	L	N	566.0162	0.0162	28.6175		
		L	566.0178	0.0178	31.4357		
		H	566.0108	0.0108	19.0642		
	H	N	566.0126	0.0126	22.2972		
		L	566.0110	0.0110	19.3807		
		H	566.0146	0.0146	25.7751		

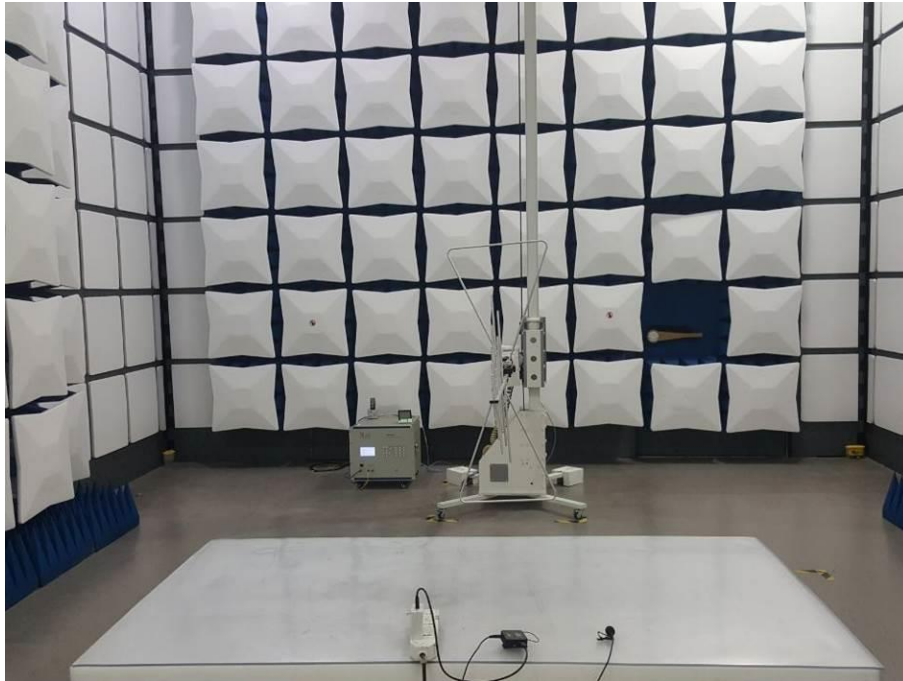


Test frequency	Test Conditions		Measure Frequency	Frequency Error		Limit	Result
(MHz)	Voltage (V)	Temperature (°C)	(MHz)	(MHz)	ppm	ppm	
580.5MHz	N	N	580.5122	0.0122	20.9432	± 50ppm	PASS
		L	580.5101	0.0101	17.4708		
		H	580.5116	0.0116	19.9578		
	L	N	580.5136	0.0136	23.4389		
		L	580.5114	0.0114	19.5619		
		H	580.5152	0.0152	26.2361		
	H	N	580.5122	0.0122	20.9838		
		L	580.5123	0.0123	21.1219		
		H	580.5102	0.0102	17.5502		

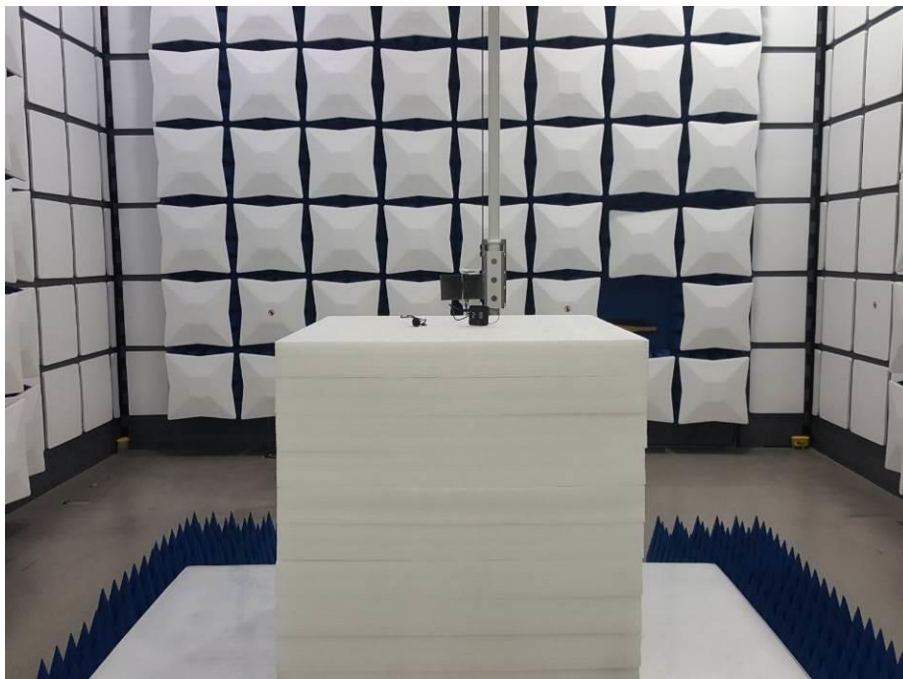
Test frequency	Test Conditions		Measure Frequency	Frequency Error		Limit	Result
(MHz)	Voltage (V)	Temperature (°C)	(MHz)	(MHz)	ppm	ppm	
595.5MHz	N	N	595.5111	0.0111	18.6635	± 50ppm	PASS
		L	595.5159	0.0159	26.6872		
		H	595.5161	0.0161	26.9919		
	L	N	595.5156	0.0156	26.1263		
		L	595.5107	0.0107	18.0354		
		H	595.5139	0.0139	23.4235		
	H	N	595.5193	0.0193	32.3783		
		L	595.5122	0.0122	20.5006		
		H	595.5133	0.0133	22.3245		

4 PHOTOGRAPH OF TEST

30MHz-1000MHz

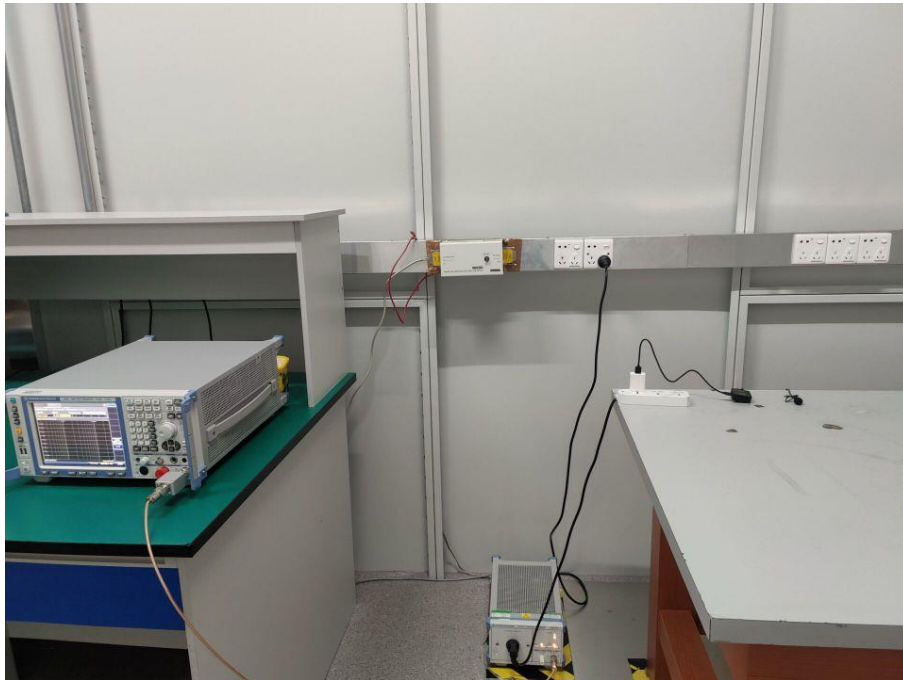


Above 1000MHz





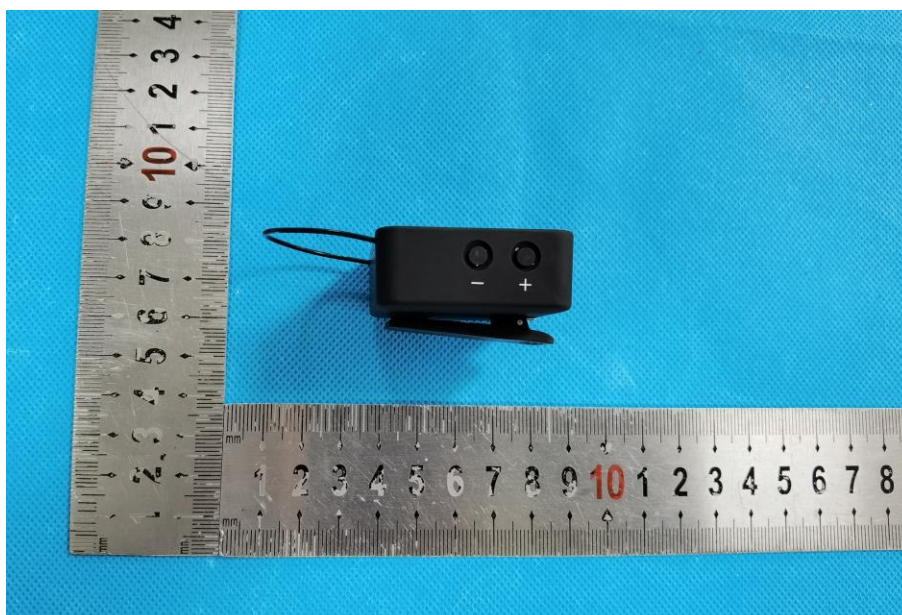
Conducted Emission



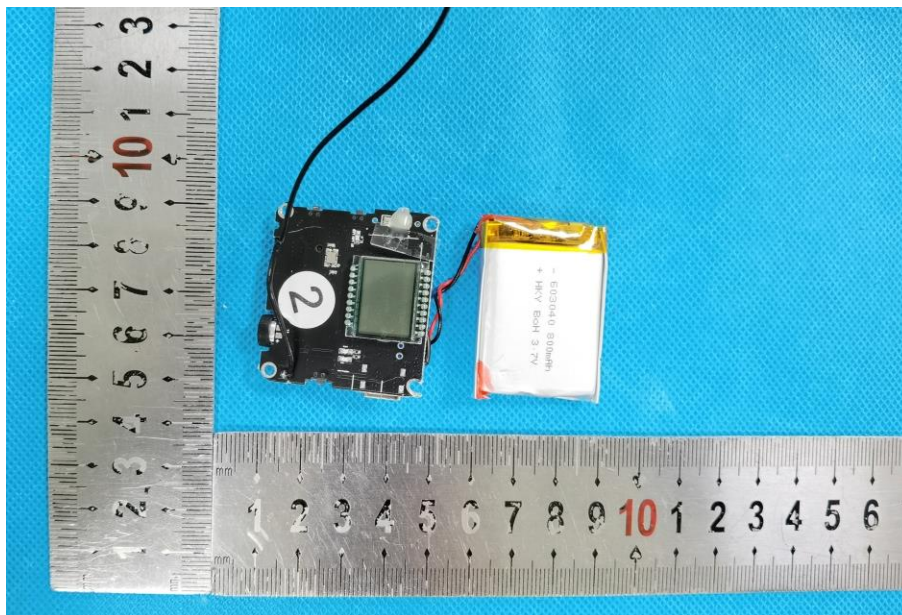
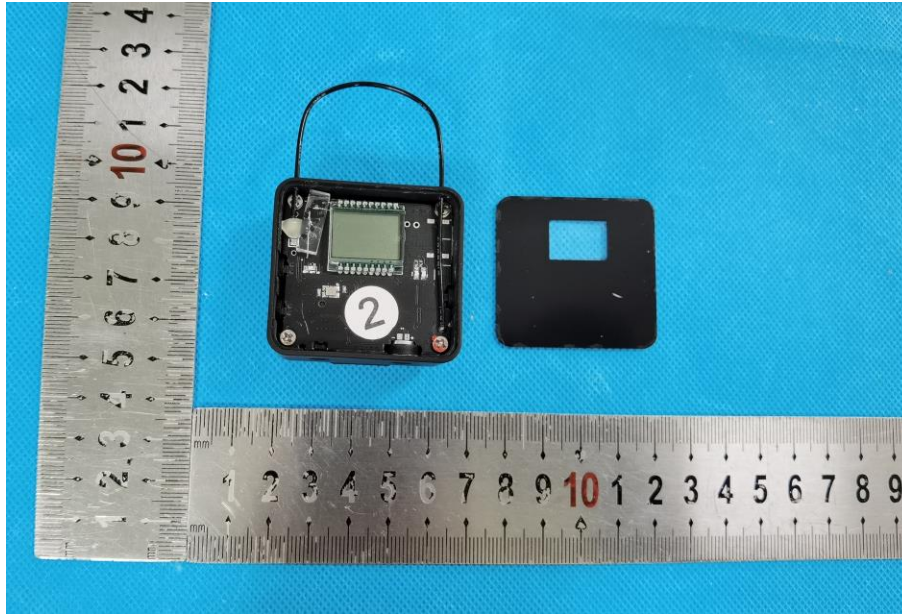
5 PHOTOGRAPH OF EUT

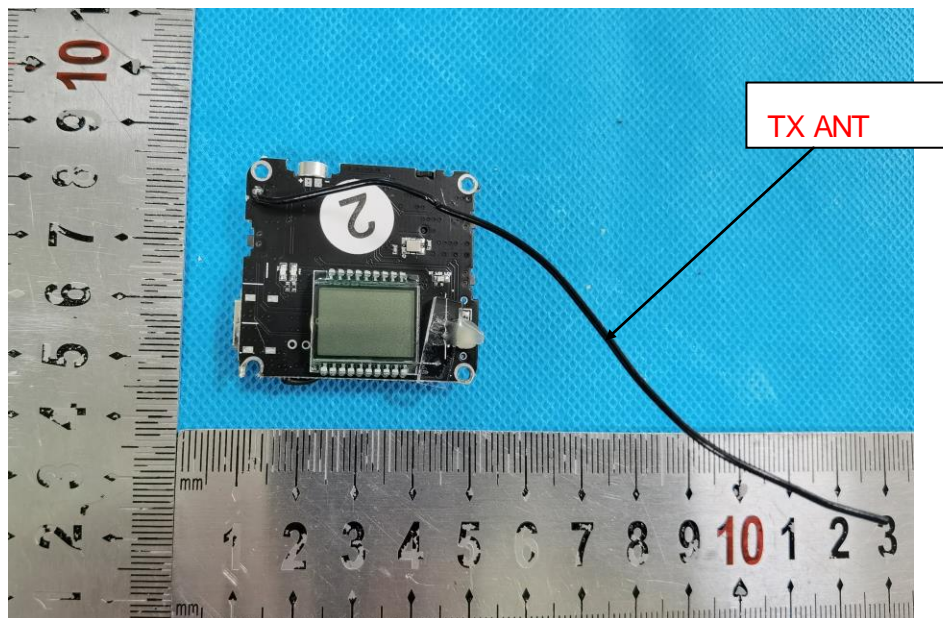
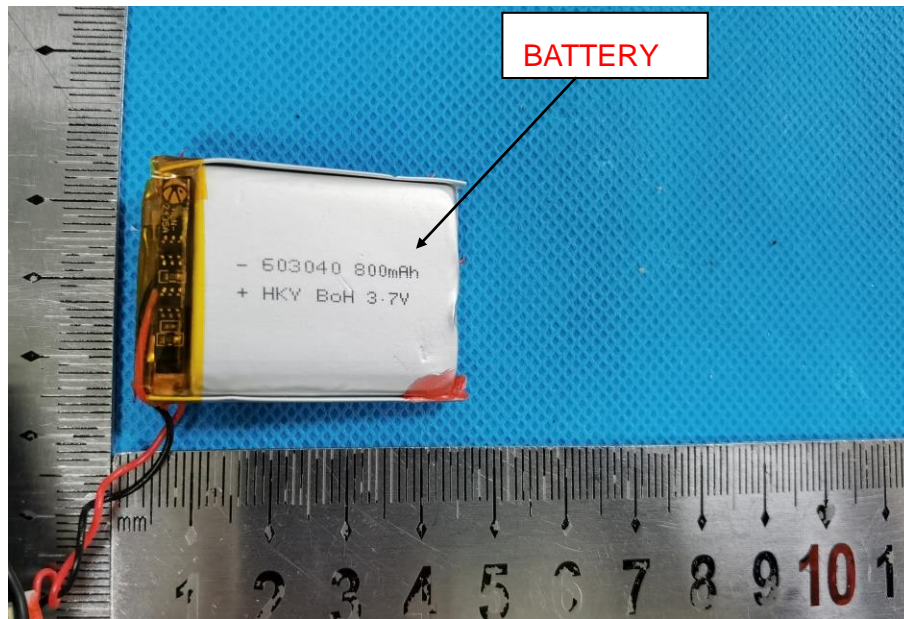
External photos

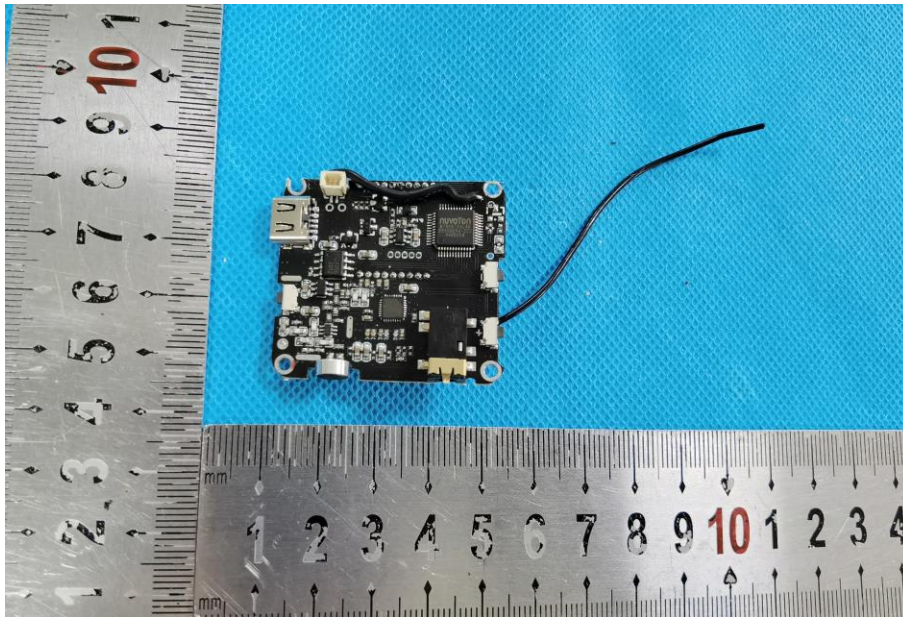






Internal photos





END