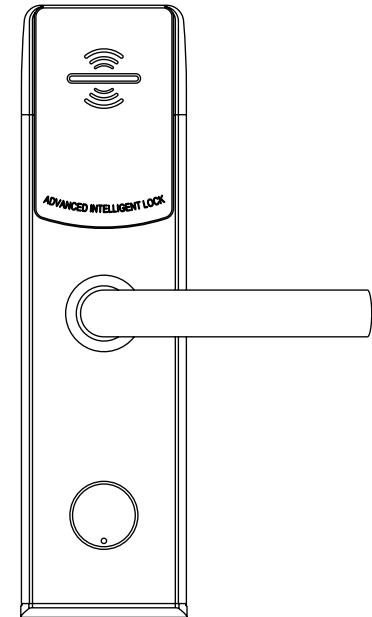


USER MANUNAL OF HOTEL ELECTRONIC LOCK



- Thanks to choose our locks:
- Please read this user manual carefully before use.
- Please keep well this manual for future query.
- To know more about our new products and service, please contact our company.

Please read the manual

- Any change submit to our confirmation.
- Any error or question in the manual, please feel free to contact us.
- It is forbidden to copy our manual and for other usage, except the authorized company and users.
- For any wrong operation or installation to the user or third party, we do not responsible for the duty.
- For the damage caused by anthropic factor or inevitable reason, we do not pay the loss or maintain for free, please check our after sale service terms.
- Please do not take apart the lock if you are not technician, if necessary, please make the operation under the guide of technician.
- Notice: There maybe a little difference for product pictures with real products, please subject to our real products.
- After changing the battery, please do not throw away the battery, please refund to recycle bin in case of pollution!



Phase 1 System Introduction

I. System Introduction

This system can be integrated with other systems. It has the functions: convenient carry, reliable performance, RF card for key use, intelligent control system etc. It is widely used in hotel, resort, enterprise, modern building, resident area and villas.

II. Characteristics

The system include door lock, card, card reader and software.

1. Offline system, no need cable or ethernet, convenient for use and management.
2. Chip in the lock can identify, classify the card.
3. The lock can store the latest 990 records(Including the record by card and mechanical key). you can also read the record with our portable LCD handset.
4. The lock works with ANSI five latches mortise, which is safe, reliable and durable.
5. It is with low consumption power, you can use more than one year with 4pcs AA batteries.
6. Alarm function: if the door is not closed well or some one intent to adhere the combination latches, there is alarm and the light will flash too.
7. This lock can be set as passage function(Always open) to use in the meeting room or the passage door.
8. Wide application: it can be installed on the wood or metal door with thickness is over 38mm.

III. Lock System

1. Hardware: Front panel, back panel, mortise and accessories.
2. Relative accessories: Card, card reader, handset device, software etc.

Power supply: DC4.5~6.0v, 4pcs AA battery.

Card: Mifare 1 Card.

System: WINDOWS 2000/WINDOWS XP or above.

Technical Parameters:

Working Frequency	13.56MHZ(Mifare card)
Distance:	>2cm
Working humidity:	10~98%RH
Working Temperature:	-20~50 degree
Working Humidity:	15~95%RH
Static Current:	<25uA
Dynamic Current:	<200mA
Working Voltage:	DC4.5V~6v, 4pcs AAA batteries
Battery Life:	15000 times
Opening Record:	990 latest records
Unlock Way:	Microwave induction, touch the card to the lock, the
	blue light flash one time with one sound, turn the
Unlock Time:	handle to open the door.
	if you do not open, it will lock after 5 seconds.
Low Voltage Alarm:	if the power is less than 4.8v, there are 3 sounds for tip.
	you can still open 100 times. if it is less than 4.5v, you
	can not open the door any more.

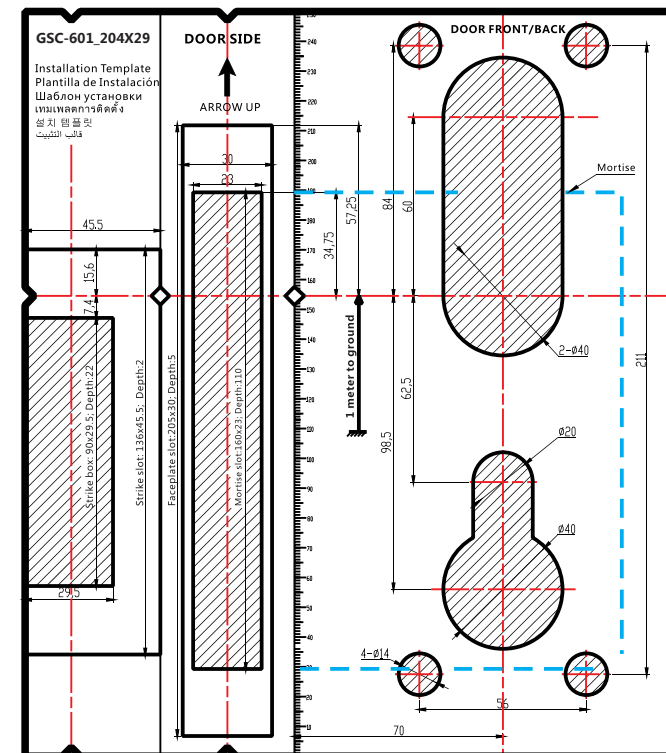
Phase 2 Lock Installation

There are hardware and software installation for the system, here we only introduce the hardware installation, details for software installation and use please find in the CD.

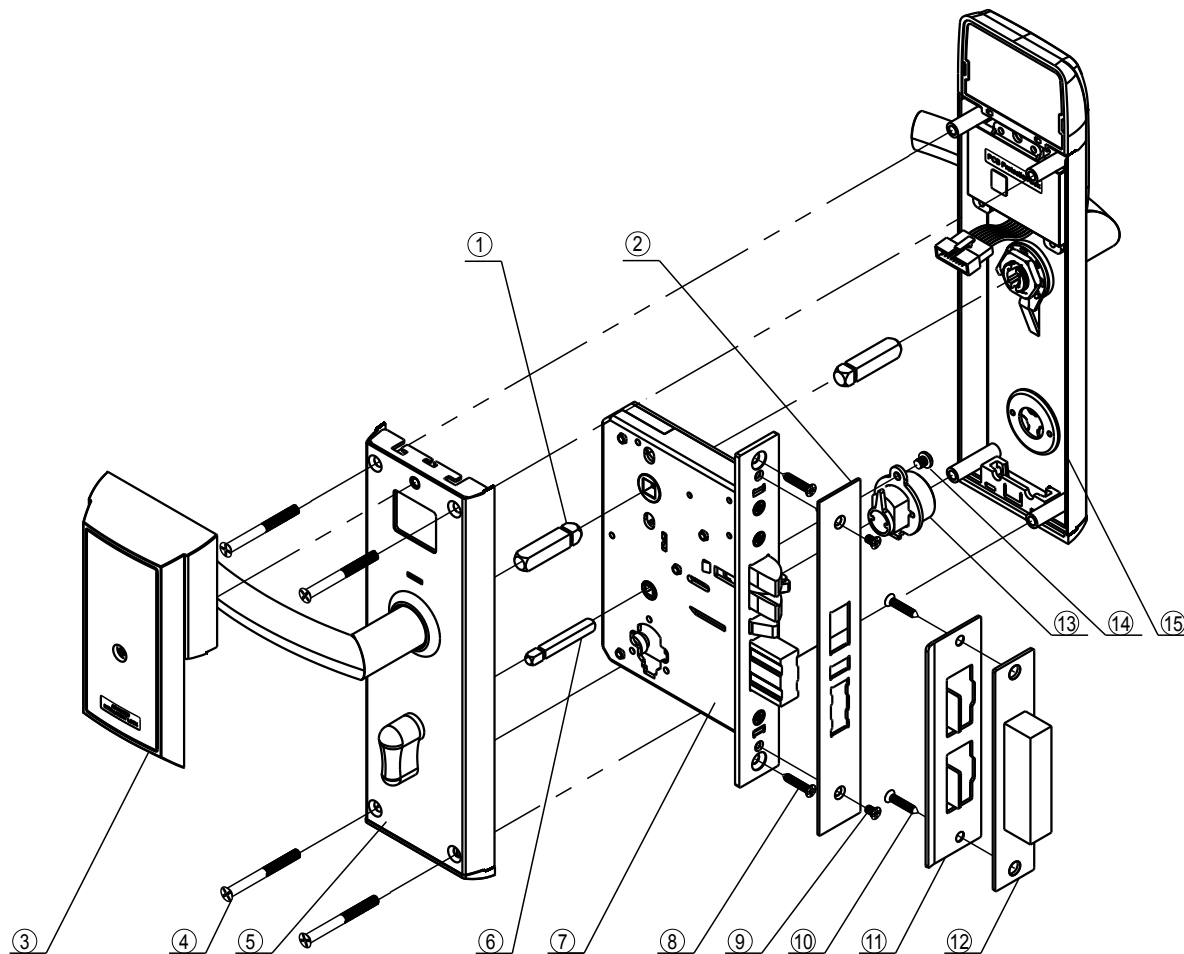
1. Drill the Hole

We suggest you drilling the hole under the guide with manufacturer or the door factory to avoid the mistake or damage to the doors.

Please drill the hole according to our installation template as below:



Pic (1) Drilling Hole Map
Model:GSC-601

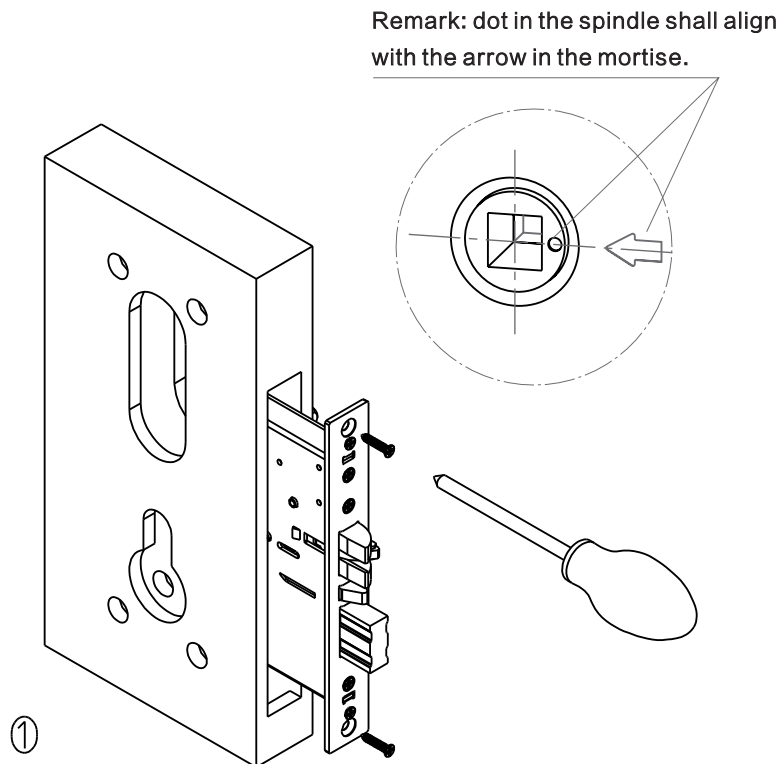


No.	Name	Quantity
1	Square latch	2
2	Faceplate	1
3	Battery Pack	1
4	Assemble Screws	4
5	Back Panel	1
6	Small latch	1
7	Mortise	1
8	Mortise Screw	2
9	Faceplate Screw	2

No.	Name	Quantity
10	Strike Screw	2
11	Strike	1
12	Strike Box	1
13	Cylinder	1
14	Cylinder Screw	1
15	Front Panel	1

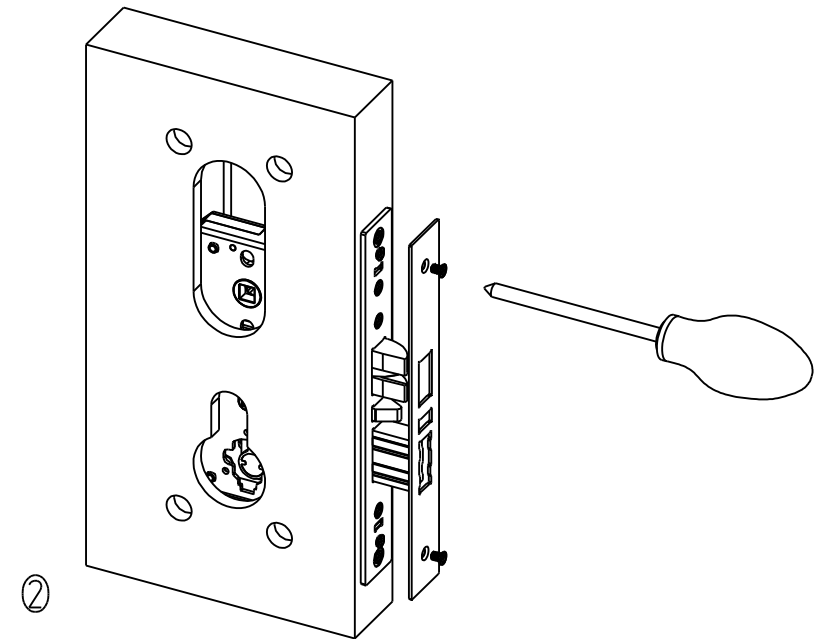
1. Fix the mortise on the door for the first step:

Notice the direction of the mortise cable and insert the mortise to the drilled hole and tighten the screws of the side plate. please refer the below pic(1).



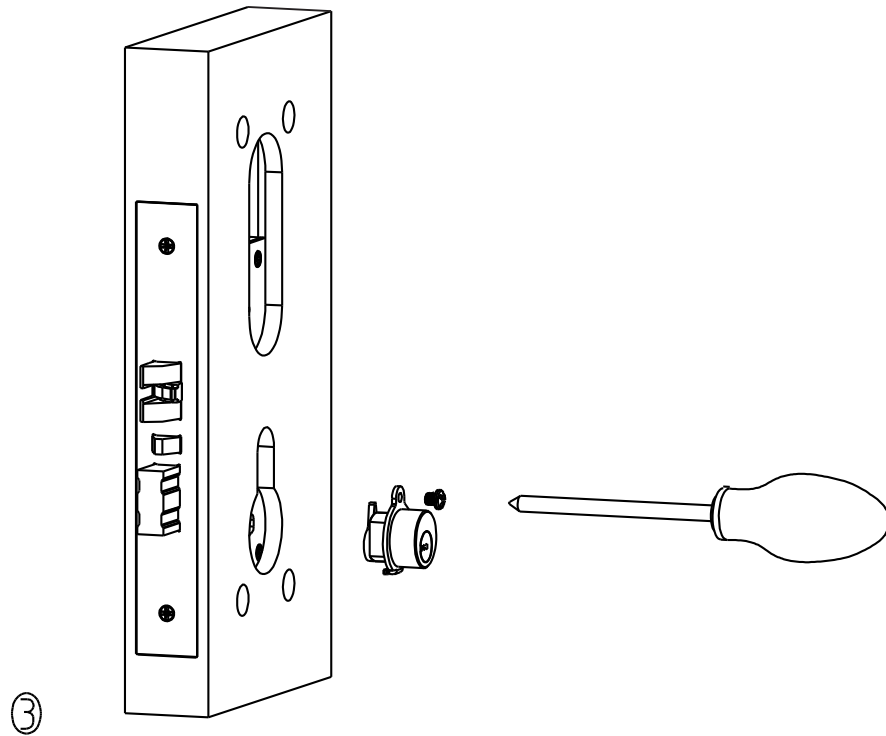
Pic(1) Mortise

2. Fix the faceplate with the screws as the picture.



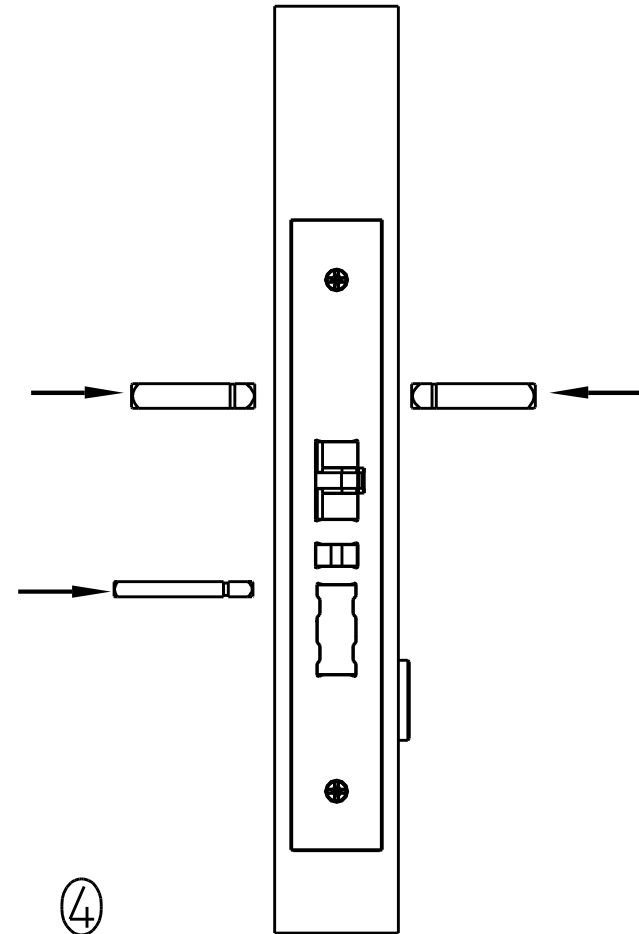
Pic(2) Mortise Faceplate

3. Fix the cylinder with the screw, notice to adjust the position when cross the cylinder wing inside the mortise.



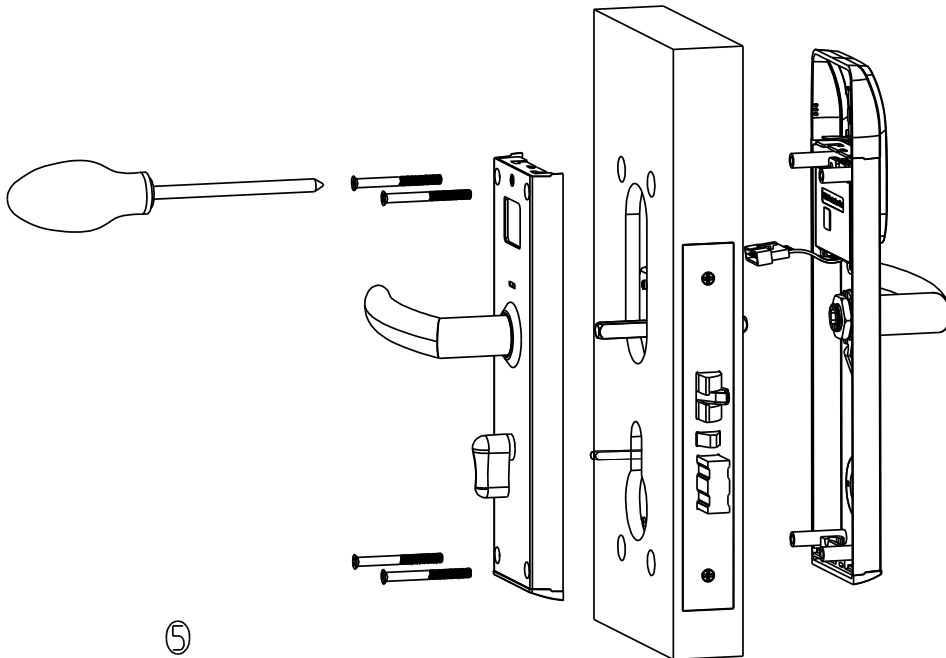
Pic(3) Fix Cylinder

3. Cross the square latch and the small latch from the mortise hole, notice the hole size is different, so you can only cross the square latch on top spindle position and the small latch is on the bottom position.



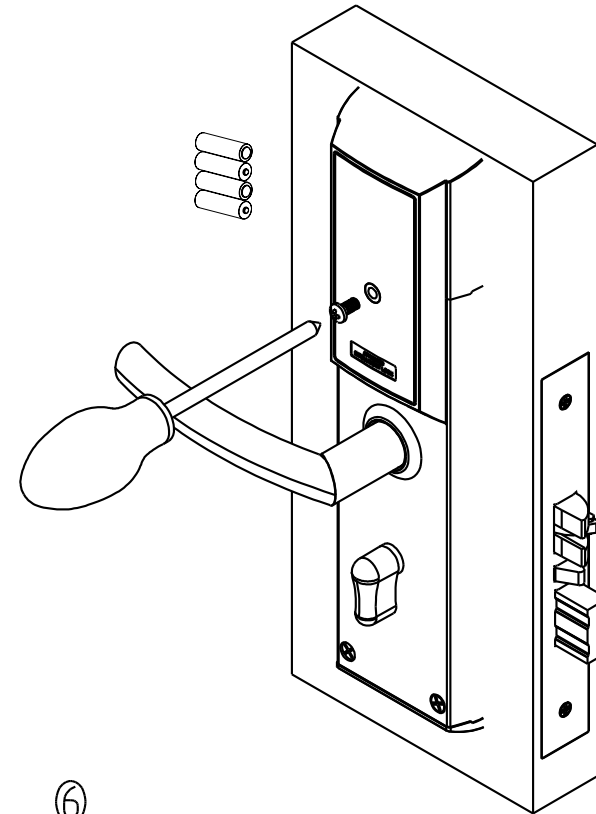
Pic(4) Fix Latches

5. Fix the front panel and back panel with screws as the photo.



Pic(5) Fix Panel

6. Put 4pcs AA batteries inside the battery box and fix it with the screws as below photo:



Pic(6) Assemble Battery

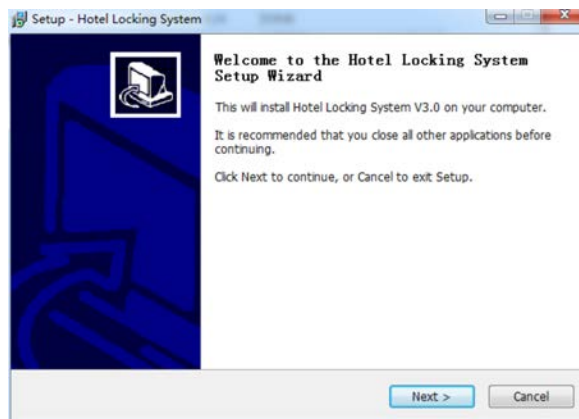
7. Please use the mechanical key to the cylinder to open the door.
or try the mastery card to open the door.

Phase 3 Software System Operation

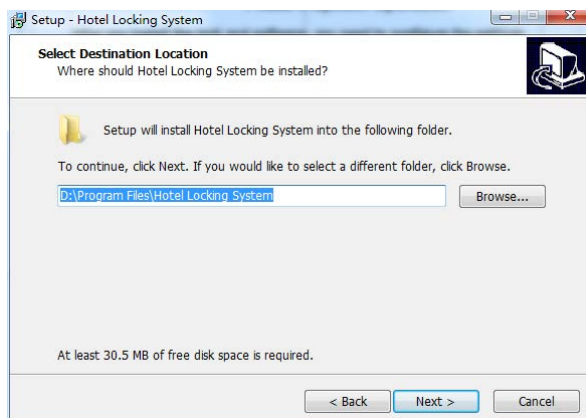
After you install the lock and software, you need to configure the settings include system configuration, software registration, lock information setting etc.

1. Software

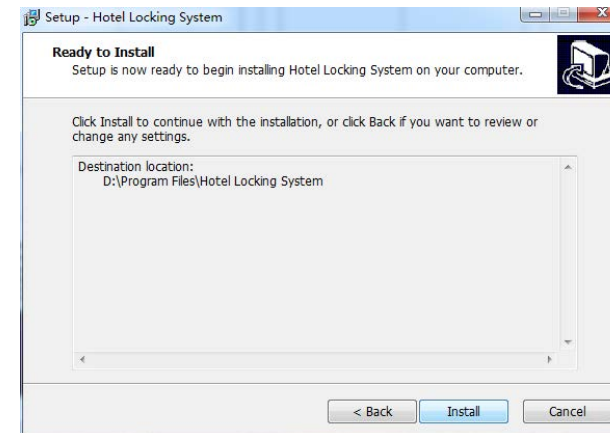
Double click the HLS3.2 setup file and install the software in your computer step by step as below:



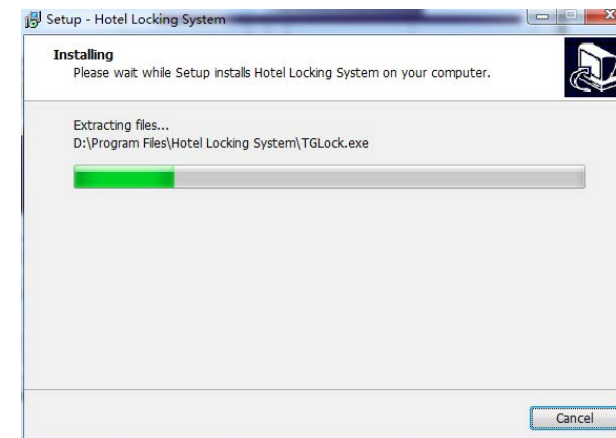
Click Next and continue



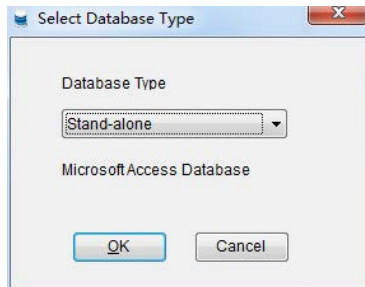
Click Next and continue



Click Next and continue, it will install the software automatically.



After finish installation, system will ask you to choose the database type, please choose the type accordingly.



please double click the software icon and run the software, make sure the card reader is connected with your computer.

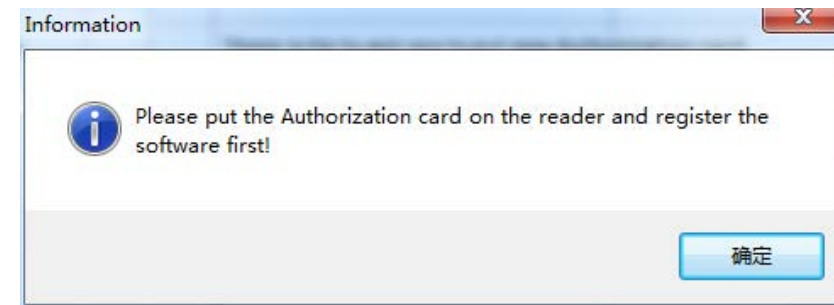


Then login the software window as below:



There is no password, just click OK to enter the software window.

There is tip to ask you to put new Authorization card.



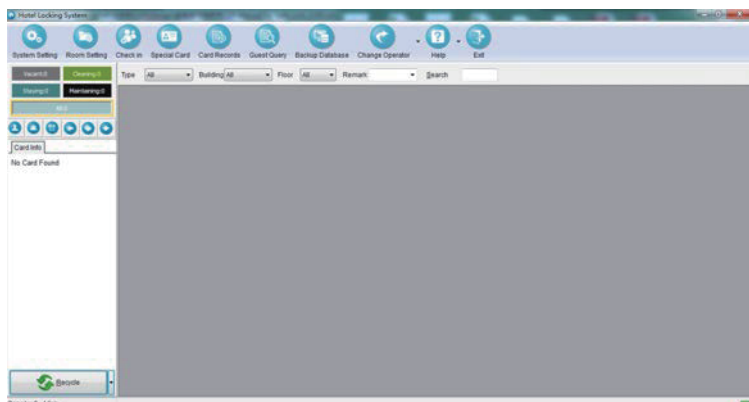
You can see the tip if you put the Authorization card.



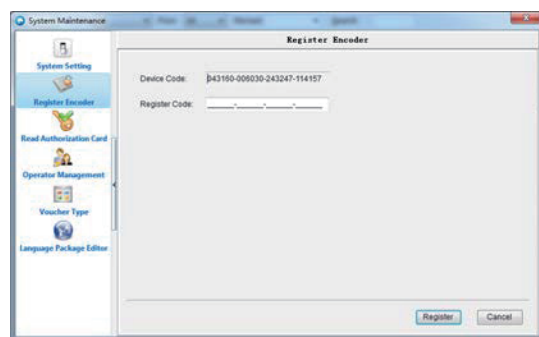
You can click Read button and continue the work.



Then please login the software and find the system setting,



you need to register the software, please show the device to our distributor or our company directly.
After getting the register code, please enter and finish registration.



Please refer to our software guide for detail operations.

Phase 4 Sale Service Term

We provide high quality after sale service for our clients after you bought our locks.

Quality Guarantee:

All of our locks and accessories are tested by our technician before leaving factory, if there are any problem during use, we will provide fast and best solution for you.

After Sale Service:

1. Product transportation: we are sure to pack well the goods with foam inside. if there is any damage during transportation, we will check with shipping company and provide solution for any damage.
2. Change and Refund: we provide right goods and spare parts, if the quantity is not right, please response to us within 3 days after you got the goods. we will change or add the spare parts.
3. Maintenance: we provide free maintenance for our locks within 1 year after you get the lock.
4. Accident damage maintenance: if there is artificial or irresistible factor, we only charge the cost for the spare parts.
5. All the products share the maintenance all the life.

Caution: The user is cautioned that changes or modifications not expressly approved by the party responsible for compliance could void the user's authority to operate the equipment.

This device complies with Part 15 of the FCC Rules. Operation is subject to the following two conditions: (1) this device may not cause harmful interference, and (2) this device must accept any interference received, including interference that may cause undesired operation.

NOTE: This equipment has been tested and found to comply with the limits for a Class B digital device, pursuant to Part 15 of the FCC Rules. These limits are designed to provide reasonable protection against harmful interference in a residential installation. This equipment generates, uses and can radiate radio frequency energy and, if not installed and used in accordance with the instructions, may cause harmful interference to radio communications. However, there is no guarantee that interference will not occur in a particular installation.

If this equipment does cause harmful interference to radio or television reception, which can be determined by turning the equipment off and on, the user is encouraged to try to correct the interference by one or more of the following measures:

- Reorient or relocate the receiving antenna.
- Increase the separation between the equipment and receiver.
- Connect the equipment into an outlet on a circuit different from that to which the receiver is connected.
- Consult the dealer or an experienced radio/TV technician for help.

FCC Radiation Exposure Statement:

This equipment complies with FCC radiation exposure limits set forth for an uncontrolled environment.

This transmitter must not be co-located or operating in conjunction with any other antenna or transmitter.