

Respected clients:

Many thanks for choosing us. We hope you take your valuable time to read the user manual before using the barcode reader. Hope this will be a good base for a smooth use. Any enquiries, please contact with us. Thanks.

I . Products Features

- 1.Exquisite and beautiful design, external protected by soft rubber and internal scientific solidification structure, so its drop resistance better than ordinary scanner.
- 2.The latest technical accomplishment is applied to the engine and decoding function, reading codes better and faster than the similar in the market.
- 3.Easy using, easy setting.
- 4.Large capacity, 1.5 times higher than ordinary scanner, it guarantees use longer after fully charged

II . Connect Operation For The Bluetooth Barcode Scanner With Android, Iphone, Tablet PC And Other Terminals Which Have Bluetooth Function

1.press the scanner switch and two beep sound,indicating the power is on. Meantime the blue light is flickering (This means the scanner is waiting for connection with Bluetooth terminals.) press the switch to scan “Bluetooth HID” and “Matching Mode” in turn, open the Bluetooth terminal device to search the laser till “Bluetooth” come out on the computer screen, click “Bluetooth”to connect with Bluetooth and then a beep sound will be heard if successfully matched, meantime the blue light will stop flickering.



Bluetooth HID



Matching Mode

***Functions Features**

- 1.Support Android,Iphone,Tablet PC and PC,support Bluetooth 2.1,3.0,4.0,e.g..
 - 2.Under the “Normal Mode” transmit distance is ten meters(Depending on the working environment).
- If exceed the effective distance or failed to upload the data the barcode scanner will have 3 short beep sound.

3. Self-defined ID, convenient for the user to distinguish the source of data.
4. "Check Mode" easy to use, can storage 10000 barcode.
5. Auto sleep, sleep electricity lower than 10UA, greatly extend the battery standby time.
6. Dedicated charger ensure charging safe.
7. ID Settings Read the "Start ID settings", "ID Parameter Settings" barcode in sequence (eg. Read parameter "0" and "1" barcode, ID settings is "1"), Other ID Settings can be so on.
8. The scanner will automatically connect with the last paired device when re-start.
9. Bluetooth Device can be disconnected or connected with the scanner after successfully paired.
10. The scanner will keep connection with the last connected device when charging.
11. When charging the red light is on indicating the scanner under charging, red light is off indicating full charge (Note: Red light is charge indicator, blue light is Bluetooth connection and reading code indicator.)
12. The scanner will shut down after pressing switch 10 seconds.

III. IOS System Soft Keyboard Reveal/Conceal



IOS System Soft Keyboard Reveal/Conceal

Note:When using the IOS system,read “IOS System Soft Keyboard Reveal/Conceal” barcode can reveal or conceal the soft keyboard.

IV Other Setting

1.ID Parameter Settings



Start ID Settings

* ID Parameter



0



1



2



3



4



5



6



7



8



9

2.ID Reveal/Conceal Settings



ID Reveal



ID Conceal

3.Data Transfer Speed Settings



25 bits/second



100 bits/second

4.HID Mode Language Settings



English



Czech

5.Sleeping Time Settings



Open Sleeping Time Setting



20S



30S



60S



2 min



5 min



10 min



20 min



No Sleeping

6.Work Mode Settings



Normal Mode



Check Mode



Total Data



Data Upload



Clear Data



Enter into Settings

V Restore Factory Settings



Restore Factory Settings

Note: first read the “Enter into Settings” then read the ” Restore Factory Settings” and finally read the “Exit Settings”. It can make all the previous settings back to factory settings.



Exit Settings



Enter into Settings

(VI)Barcode Enable And Forbid



Read All Types of Barcode



Forbid To Read All
Types of 1D Barcode



Enable to Read All
Types of 1D Barcode



Forbid to Read All
Types of 2D Barcode



Enable to Read All
Types of 2D Barcode



Exit Settings



Enter into Settings

VII Line Feed Suffix Setting



Enable Suffix



Add Line Feed Suffix

Note: first read “Enter Into Settings” then read” Enable Suffix” , “Add Line Feed Suffix” and last read” Exit Settings”, line feed can be added.



Exit Settings



Enter into Settings

VIII Add Blank Lines



Enable Suffix



Add Blank Lines

Note: first read “Enter Into Settings” then read” Enable Suffix” , “Add Blank Lines” and last read” Exit Settings”,blank line can be added.



Exit Settings



Enter into Settings

IX Set the prefix



Not Reveal Prefix



Reveal Prefix



Add Prefix



Exit Settings



Enter into Settings

X Set the suffix



Not Reveal Suffix



Reveal Suffix



Add suffix



Exit Settings

XI Parameters code



0



1



2



3



4



5



6



7



8

13



9



A



B



C



D



E



F



Save Settings



Cancel the current Settings



Cancel set a string of data



Cancel the current Settings



Exit Settings

XII Parameter barcode and corresponding representing characters table.

Parameter code	Representing	Parameter code	Representing	Parameter code	Representing	Parameter code	Representing	Parameter code	Representing
2 d	-	4 4	D	5 b	[7 2	r	2 b	+
2 e	.	4 5	E	5 c	\	7 3	s	2 c	,
2 f	/	4 6	F	5 d]	7 4	t		
3 0	0	4 7	G	5 e	^	7 5	u		
3 1	1	4 8	H	5 f	-	7 6	v		
3 2	2	4 9	I	6 0	,	7 7	w		
3 3	3	4 a	J	6 1	a	7 8	x		
3 4	4	4 b	K	6 2	b	7 9	y		
3 5	5	4 c	L	6 3	c	7 a	z		
3 6	6	4 d	M	6 4	d	7 b	{		
3 7	7	4 e	N	6 5	e	7 c			
3 8	8	4 f	O	6 6	f	7 d	}		
3 9	9	5 0	P	6 7	g	7 e	~		
3 a	:	5 1	Q	6 8	h	2 1	!		
3 b	;	5 2	R	6 9	i	2 2	"		
3 c	<	5 3	S	6 a	j	2 3	#		
3 d	=	5 4	T	6 b	k	2 4	\$		
3 e	>	5 5	U	6 c	l	2 5	%		
3 f	?	5 6	V	6 d	m	2 6	&		
4 0	@	5 7	W	6 e	n	2 7	,		
4 1	A	5 8	X	6 f	o	2 8	(
4 2	B	5 9	Y	7 0	p	2 9)		
4 3	C	5 a	Z	7 1	q	2 a	*		

This scanner with paired Bluetooth adapter usage(for referred)
(*A external bluetooth adapter can be prepared and used as following steps.)

Note: If don't use the Bluetooth adapter can ignore the follow content.

*Bluetooth Adapter have 2 pairing methods on PC.

- 1.Operation for computer with bluetooth driver.
- 2.Operation for computer with bluetooth driver, need to install company native Bluetooth driver optical disc.
- 3.Bluetooth bar code scanner can work under “USB Mode” and “Serial Interface Mode”.

I Operation For Computer with Bluetooth Driver

1). Matching Method Under “USB Mode”


- a. Start the bluetooth scanner, read “Bluetooth HID”, then enter into USB transfer model.
- b. Read “Matching Mode”, scanner enter into matching status.



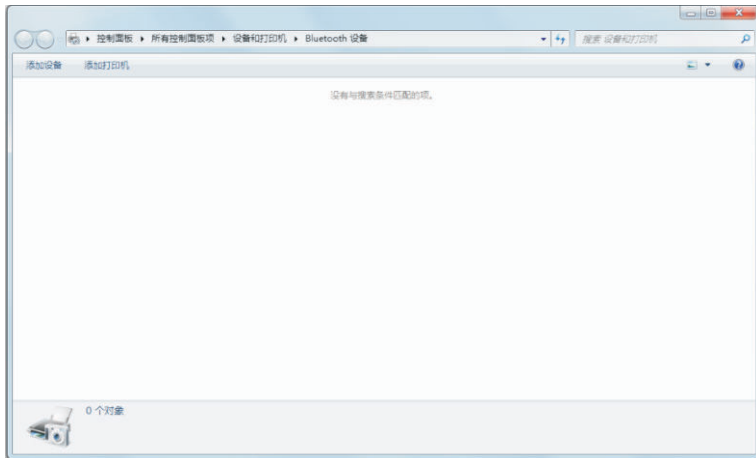
Bluetooth HID



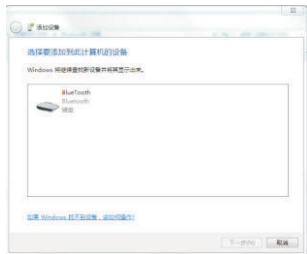
Matching Mode

c. Insert the bluetooth adapter into the computer USB port, the bottom right corner will appear the bluetooth icon “”

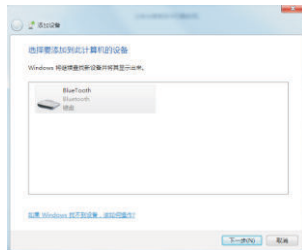
d. Double click the bluetooth icon ■



e. Click the “Add device”.



f. Click “Next”, then find a new device named “Bluetooth”



g. Click “Bluetooth Keyboard” and “Next”.



h. Follow picture appears after add device successfully.



I. Heard a "beep" after clicking "Close", blue light stops flickering at the same time. HID Mode matches successfully.



2) "Virtual Serial Interface Mode" Matching Method

a. Open the bluetooth scanner, read "Bluetooth SPP" code, then scanner enter into virtual serial interface transfer mode.

b. Read "Matching Mode" code, scanner enter into matching status.



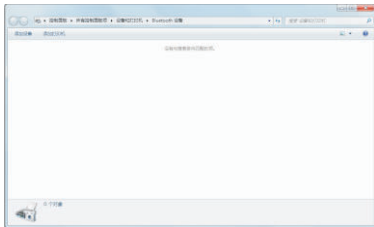
Bluetooth SPP



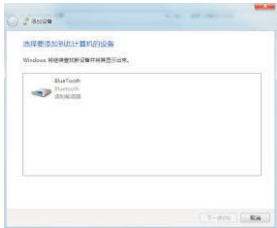
Matching Mode

c. Insert the bluetooth adapter into the computer USB port, the bottom right corner will appear the bluetooth icon .

d. Double click the bluetooth icon.



e. Click “Add Device”



f. Click “Bluetooth” and “Next”



g. It means virtual serial interface mode matching successfully if appears follow icon.



图 (A)

The above two devices indicate the bluetooth code scanner already matched successfully under the “USB Mode” and “Virtual Serial Interface Mode”,if the bluetooth barcode scanner don't connect with other devices then this scanner can switch use under the “USB Mode”and “Virtual Serial Interface Mode”,no need match again.

Note:If you want to use the “USB Mode” and “Virtual Serial Interface Mode” at the same time,pls connect the bluetooth “Virtual Serial Interface Mode” first and then connect the “USB Mode”,now the interface will appear 2 successfully connected icon.

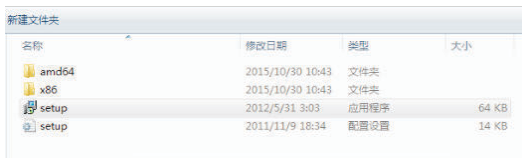
Use the bluetooth barcode scanner under the “USB Mode” then scan the “Bluetooth HID” barcode.

Use the bluetooth barcode scanner under the “Virtual Serial Interface Mode” then scan the “Bluetooth SPP” barcode.

II. Operation For Computer Without Bluetooth Driver,Need Install Company Native Bluetooth Driver Optical Disc

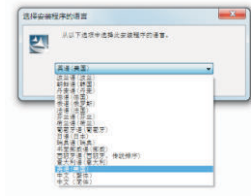
A.Match Method Under “USB Mode”

1.Insert the bluetooth adapter into the USB port,open the optical disc,double click the “setup.exe” icon.



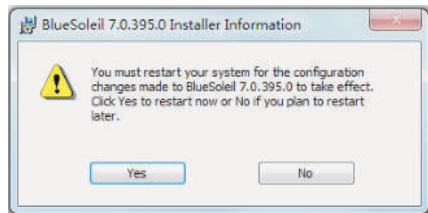
Picture(1)

2.Choose “English(USA)” install.



Picture(2)

3.Installation completely will appear the interface as show below, click “Yes” restart the computer.

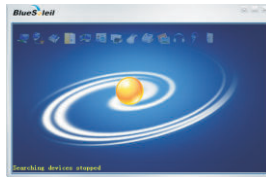


Picture(3)

4.After restart the computer,double click the bluetooth icon on the bottom right screen will app “Picture(5)” operation interface.



Picture(4)



Picture(5)

5.Now read the “Bluetooth HID” and “Match Settings” barcode in sequence,then double click the ball icon to search the bluetooth will appear “Picture(7)” operation interface.



Picture(6)



Match Settings



Bluetooth HID

6. Right click the “Bluetooth” icon, click “Pair” will appear operation interface as picture(8).

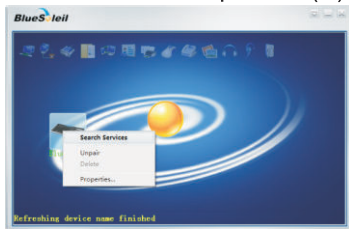


Picture(7)



Picture(8)

7. Right click”Bluetooth” in picture(8), then click “Search Services” will appear as picture(10)



Picture(9)



Picture(10)

8. Right click “BlueTooth” icon in “Picture(10)” will appear “Picture(11)” operation interface. Connect bluetooth via click “Connect Bluetooth Human Interface Device”. Connect successfully will appear “Picture(12)”, now scanner can read bar code.



Picture(11)



Picture(12)
Bluetooth Connect Successfully

B. Match Method Under "Virtual Serial Interface Mode"

1. Software installed successfully, the previous operation is the same as Match under USB Mode Step 1-4. Then read "BlueTooth SPP" and "Matching Mode" code. Double click ball icon to search the bluetooth will appear "Picture(2)" operation interface.



BlueTooth SPP



Picture(1)



Matching Mode



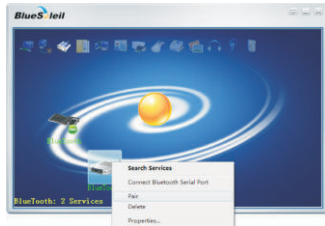
Picture(2)

2. Right click “BlueTooth” icon and click “Search Service” as Picture(3)” shows.



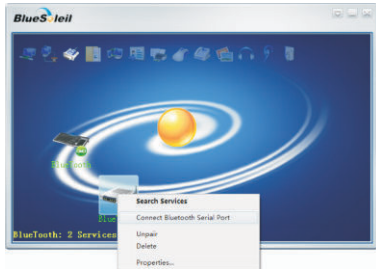
Picture(3)

3. Right click “Bluetooth ”will appear picture(4).



Picture(4)

4. Right click “BlueTooth” icon in “Picture(4)” will appear “Picture(5)” operation interface. Connect bluetooth via click “Connect Bluetooth Serial Port”. Connect successfully will appear “Picture(6)”, now scanner can read bar code.



Picture(5)



Picture(6)
Connect Bluetooth Virtual
Serial Successfully

Note: There is no need for re-pair again for the well-connected bluetooth devices, as long as it is not paired with other terminal devices.

C. Use The Bluetooth “Virtual Serial Interface Mode” and “USB Mode” At The Same Time

If the user want to use the “USB Mode” and the “Virtual Serial Interface Mode” at the same time, please connect the “Virtual Serial Interface Mode” first then connect the bluetooth “USB Mode”, now the interface will appear 2 successfully connected icon as shown in “Picture(7)” If the user want to use the bluetooth barcode scanner under the “USB Mode” scan the “Bluetooth HID” barcode right click the icon, and then click the “Connect Bluetooth Human Interface Device” connect; If the user want to use the bluetooth barcode scanner under the “Virtual Serial Interface Mode” scan the “Bluetooth SPP” barcode right click the icon, and then click the “Connect Bluetooth Human Interface Device” connect.



Bluetooth HID



Bluetooth SPP



Picture(7)

About the Warranty

1.Since you buy our product with this card,you can enjoy the service of one year repair and lifelong maintenance for the rubber and plastic parts of the barcode scanner,6 months repair service for the battery and the charger,and 3 months repair service for the data cable.During the repair period,the maintenance of the product is free.Expire the warranty, we will charge the replaced components and maintenance cost;

2.If the product belongs to one of the below situations and verified by manufacturer,the user can't enjoy the free maintenance service:

- a.Expire the warranty period;
- b.The barcode scanner body is disassembled or the camera of the scanner is damaged;
- c.The surface or internal component of the scanner is seriously damaged;
- d.The product is damaged due to the wrong installation or operation;
- e.The serial number of the scanner is altered or does not conform to the number written on the card.
- f.The scanner is damaged due to an artificial fault.For instance, it is inundate.
- g.The scanner is damaged due to natural disasters,e.g. fire disaster, flood and thunder stroke.
- h.The working or storage environment of the product,e.g. temperature or humidity,does not conform to the requirements in Operation Manual.

Thank You For Choosing Our Products!

User Information	Name	
	Address	
	Zipcode	
	Tel	
	Email	

Distributor Information	Name	
	Address	
	Zipcode	
	Operator Signature	
	Distributor Seal	

Accessories Name	Quantity
Scanner	1
Adapter and CD	1
USB Charge Cable	1
Manual	1

Maintenance Record

Date	Fault Description	Maintenance Record	Operator

Barcode Reader

Warranty Card

Part No.	
Serial No.	
Purchase Date	

Please make sure to read the instructions about maintenance carefully at the back of the card. Fill out various data above carefully and the file valid only if it is signed with the official of the authorized dealer.

FCC Statement

This equipment has been tested and found to comply with the limits for a Class B digital device, pursuant to part 15 of the FCC rules. These limits are designed to provide reasonable protection against harmful interference in a residential installation. This equipment generates, uses and can radiate radio frequency energy and, if not installed and used in accordance with the instructions, may cause harmful interference to radio communications. However, there is no guarantee that interference will not occur in a particular installation. If this equipment does cause harmful interference to radio or television reception, which can be determined by turning the equipment off and on, the user is encouraged to try to correct the interference by one or more of the following measures:

- Reorient or relocate the receiving antenna.
- Increase the separation between the equipment and receiver.
- Connect the equipment into an outlet on a circuit different from that to which the receiver is connected.
- Consult the dealer or an experienced radio/TV technician for help.

To assure continued compliance, any changes or modifications not expressly approved by the party.

Responsible for compliance could void the user's authority to operate this equipment. (Example- use only shielded interface cables when connecting to computer or peripheral devices).

This equipment complies with Part 15 of the FCC Rules. Operation is subject to the following two conditions:

- (1) This device may not cause harmful interference, and
- (2) This device must accept any interference received, including interference that may cause undesired operation.

RF warning statement:

The device has been evaluated to meet general RF exposure requirement.
The device can be used in portable exposure condition without restriction.