

Owner's Manual

Wine cabinet

SW-12 SW-15 SW-18 SW-24 SW-28 SW-30
SW-63 SW-38 SW-43 SW-40 SW-51 SW-44
SW-45 SW-66 SW-75 SW-126 SW-137
SW-180 SW-192 SW-125 SW-152 SW-215
SW-242

This appliance is intended to be used exclusively for the storage of wine

Contents

1- Structure-----	4
2- Important safety instruction-----	5
3- Wine cabinet installation-----	5
4- Temperature setting-----	6
5- Loading and storage of wine bottle-----	7
6- Installation of Handle-----	8
7- Maintenance-----	8
8- Trouble Shooting -----	9


EXPLANATION

This Instruction Manual is the universal-purpose version for the models of wine cabinet manufactured by our Co. The appearance of the units that you purchase might be slightly different from the Manual, but it does not affect your proper operations and usage. Please read carefully the sections corresponding to the specific model you choose, and keep the manual properly so as to facilitate your reference at later time.

Warning:

1. This appliance can be used by children aged from 8 years and above and persons with reduced physical, sensory or mental capabilities or lack of experience and knowledge if they have been given supervision or instruction concerning use of the appliance in a safe way and understand the hazards involved. Children shall not play with the appliance. Cleaning and user maintenance shall not be made by children without supervision.
2. If the supply cord is damaged, it must be replaced by the manufacturer, its service agent or similarly qualified persons in order to avoid a hazard.
3. **WARNING:** Keep ventilation openings, in the appliance enclosure or in the built-in structure, clear of obstruction.
4. **WARNING:** Do not use mechanical devices or other means to accelerate the defrosting process, other than those recommended by the manufacturer.

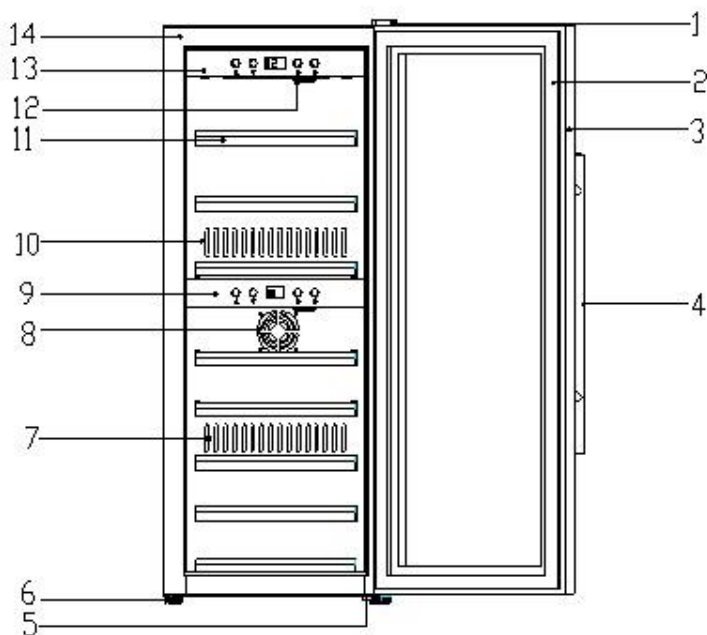
5. **WARNING:** Do not damage the refrigerant circuit.
6. **WARNING:** Do not use electrical appliances inside the food storage compartments of the appliance, unless they are of the type recommended by the manufacturer.
7. Do not store explosive substances such as aerosol cans with a flammable propellant in this appliance.
8. This appliance is intended to be used in household and similar applications such as
 - staff kitchen areas in shops, offices and other working environments;
 - farm houses and by clients in hotels, motels and other residential type environments;
 - bed and breakfast type environments;
 - catering and similar non-retail applications.

9.	
	Correct disposal of this product
	<p>This symbol on the product, or in its packaging, indicates that this product may not be treated as household waste. Instead, it should be taken to the appropriate waste collection point for the recycling of electrical and electronic equipment.</p> <p>By ensuring this product is disposed of correctly,</p>

	<p>you will help prevent potential negative consequences for the environment and human health, which could otherwise be caused by the inappropriate waste handling of this product. For more detailed information about the recycling of this product, please contact your local council, your household waste disposal service, or the shop where you purchased the product.</p>
--	---

10.Refrigerant and foaming material is flammable. Pls take care when Maintenance, Installation, Handling and processing. pls contact with specialized department for wasted products, and do not discard freely.

1. Structure



(1) Up Hinge Cover

(3) Door Frame

(5) Down Hinge

(7) Hot Air Outlet

(9) Control Panel (Down)

(11) Rack

(13) Control Panel (Up)

(2) Door Sealing

(4) Door Handle

(6) Foot

(8) Air inlet

(10) Cold Air Outlet

(12) Sensor Cap

(14) Casing

2. Important Safety Instructions

Basic precautions when using,

- (1) Only use your wine cabinet for intended purposes, as described in this guide.
- (2) Never unplug the wine cabinet by pulling out the power cord, grip the plug firmly and pull straight out to remove from wall socket.
- (3) Immediately repair or replace any worn or damaged cord, never use a cord that is split or which shows signs of wear along its length or on its ends.
- (4) Do not allow children to climb on, sit on or stand on the wine cabinet, nor hang from its shelves. They could damage the cabinet.
- (5) Do not use an extension cord.
- (6) Do not place other appliance inside the cabinet.

3. Wine cabinet Installation:

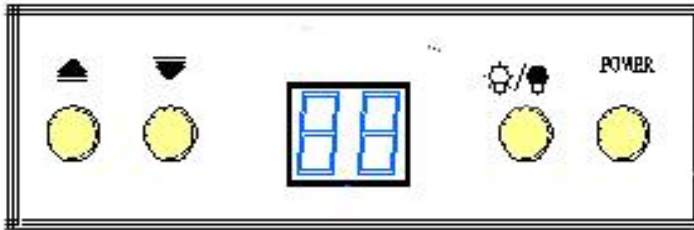
- (1) When you receive the cabinet, make sure when you unpack it there is no flaws in its external appearance (from shocks, deformation, etc.)
- (2) Open the door and check all interior fittings and supplied items if are all complete (shelves, instruction, control panel, etc.) Please install it according to the following points if the shelves or shelf brackets fall off during transit.
- (3) After checking, if no problem, then, pls carry to the final place, which should be care as follows:
 - A、 Leaving space of minimum 5cm between your wine cabinet and left & right wall; at least 8cm between back of cabinet and the wall.
 - B、 Position the wine cabinet on a flat level surface, if not, adjust the feet of wine cabinet to keep level.
- (4) Away from sources of heat and high humidity areas (laundry room and

bathroom, etc).

- (5) Do not tilt it at an angle of more than 45° when move the cabinet.
Allow a minimum 10-minute interval between transit and re-starting.
- (6) Make sure the ventilation is free if you wish to install your cabinet into a worktable, otherwise ,it will reduce the effect of usage.
- (7) Pls check the plug and cable before you connect the power, then, make sure correct voltage of 220V-240V/50Hz.

4. Temperature Setting

4.1 The temperature setting of dual temperature wine cabinet



4.1.1 The item will be used under the room temperature ranging from 0 to 38°C (32°F -101°F)

4.1.2 Temperature setting range of cabinet is 3°C~22°C (37°F -72°F)

Customers can reset the temperature according to their actual demands. Both the wine cabinet and the indicator will turn on until the desired temperature is achieved. Single Temp. zone is the same operation.

4.2.3 Pushing the temperature key up and down for 5 seconds, then, temperature display mode will be exchange between °C and °F.

4.2.4 When working both up and down zone, setting temperature of up zone must lower than down zone

4.2.5 Control Panel for dual zone

Upper Control Panel

POWER ON/OFF of the whole system(including up and down zone).

Light ON/OFF of Inside Cabinet LED light

▲ Temperature Up setting

▼ Temperature Down Setting

Down Control Panel

POWER ON/OFF of the down zone system

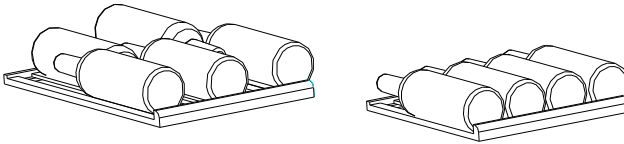
Light ON/OFF of Inside Cabinet LED light

▲ Temperature Up setting

▼ Temperature Down Setting

5. Loading and Storage of Wine Bottle:

5.1 Bottle Loading Method:



Wooden shelf: capacity: 5 or 11 bottles / shelf

Half shelf capacity: 4 or 6 bottles / shelf

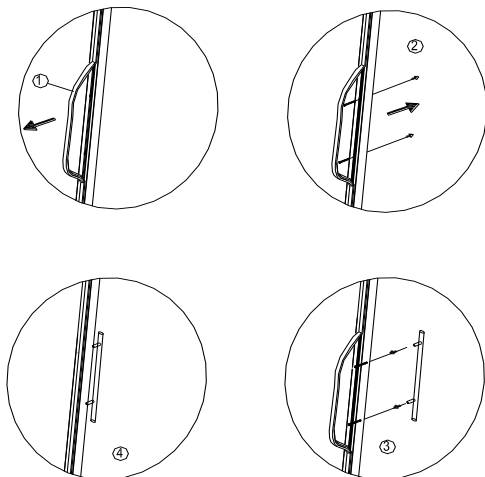
Maintain a minimum 20mm between bottle and back plate

5.2 Ensure bottle and shelf safety,pls check the following tips:

- A、Spread your bottles out as evenly as possible over the shelves, so weight is not concentrated in one point; and make sure your bottles will not touch the back of the cabinet
- B、Make sure bottles are not all grouped together at the top or bottom of the cabinet.
- C、Following loading instructions provided in section 6.1, according to the type of storage fixtures with which your cabinet is equipped, and never stack bottles on a sliding shelf.

6. Installing Your Handle

Install the handle according to the following four steps:



1. Move door seal out in the place of installing the handle
2. Take screws from Manual Bag & Put it in the appointed place
3. Fasten door handle by screwdriver
4. Refit the door seal to the relevant position

7. Maintenance

In order to ensure best performance & long-last reliable working item, pls follow the simple maintenance and cleaning operations as below:

- Make sure the power cord is unplugged before cleaning the back of your cabinet, or before moving it.
- Clean the inside of your cabinet thoroughly once a year, after unplugging and unloading it (uses water and a mild cleaning item, then rinse carefully).
- To assure that your wine cabinet provides long-lasting reliable performance, you should check it regularly and inform your dealer if anything unusual is found.

- WARNING: Do not use mechanical devices or other means to accelerate the Defrosting process, other than those recommended by the manufacturer .
 - WARNING: Keep ventilation openings ,in the appliance enclosure or in the built-in structure ,clear of obstruction.
 - WARNING: Do not damage the refrigerant circuit .
 - WARNING: Do not use electrical appliances inside the food storage compartments of the appliance,unless they are of the type recommended by the manufacturer .
 - This appliance is not intended for use by persons (including children) with reduced physical,sensory or mental capabilities,or lack of experience and knowledge, unless they have been given supervision or instruction concerning use of the appliance by a person responsible for their safety.
 - Children should be supervised to ensure that they do not play with the appliance.
 - Instruction shall include information pertaining to the installation , handing,servicing, and disposal of the appliance .
- (1) When you receive your cabinet, make sure when you unpack it there is no defect in its external appearance (from shocks, deformation, etc.).
 - (2) Open the door and check to see that the inside is complete (walls, shelves, hinges, control panel, etc.)
 - (3) If check and everything is ok, then put it to right place, make sure the place selected should :
 - A. The left and right case should more than 5 cm distance between the wall, back case should more than 8 cm between the wall.
 - B. The place should be level, if not, adjust the four feet underneath the cabinet (screwing them up or unscrewing them) so that your cabinet is level (it is advisable to sue a sprit level.)
 - (4) Away from any source of heat, and away from bathroom or laundry room.
 - (5) If ever you need to move the cabinet, do not tilt it at an angle of more than 45°, should more than 10 minutes then power on.

- (6) If you wish to install your cabinet under a worktop, you will keep the ventilation of the back case is good, otherwise it will affect the use effect.
- (7) Your cabinet is easy to operate and has proven its reliability, It Will provide long-lasting satisfaction if you follow the simple maintenance and cleaning operations listed below.
- Replace the activated charcoal filter inside the box hole half a year
 - Remove dust from the outside box twice a year.
 - Make sure the power cord is unplugged before cleaning the back of your cabinet, or before moving it.
 - Clean the inside of your cabinet thoroughly once a year, after unplugging and unloading it (use water and a mild cleaning produce, then rinse carefully).
 - To assure that your wine cabinet provides long-lasting service, you should check it regularly and inform your dealer if you note anything unusual .
- (8) pls contact with specialized department for wasted products, and do not discard freely.

8. Trouble Shooting

Problem	Solution
no working	Plug or not
	Fuse break
	No power
Cooling problem	Heat source near the item
	Ventilation not well
	Door close not well or door open too long
	Door sealing problem or deformation
	Bottles loading too much in same shelf
	Air inlet or outlet block
	Control Setting problem

	Ventilation space in the right & left casing not enough
Noisy	Wine cabinet placed not flat
	Item touch the wall
	Some parts loose or taken off

If still have problem after checking above, pls try to contact service center or dealer.

Note: normal operation for following phenominent:

A) Compressor no start:

Compressor will not start if room temperature is lower than desired temperature, but item is still working with heater inside till desired temperature achieved.

B) Compressor re-start

Compressor will stop working when cooling system in the cabinet reaches presetting temperature, and re-start working until the desired temperature is achieved. Allow a minimum 5 minute interval before re-starting.

C) Dew on the surface of cabinet:

The surface of wine cabinet especially the glass door appear some frost if item in a damp room. This is due to the moisture in the air coming into contact with the cabinet. Please wipe it away with dry cloth.

D) Liquid sound:

- (1)、The sound of compressor when starts or stops working
- (2)、The flowing sound of refrigerant in the refrigeration system
- (3)、The evaporating sound of refrigerant in the evaporator

E) Condensation formed inside the cabinet

Under the environment with high level of humidity or the door of wine cabinet has been left open for a long period or opened frequently, wipe off the door and walls and leave the door closed as long as possible.

Caution: The user is cautioned that changes or modifications not expressly approved by the party responsible for compliance could void the user's authority to operate the equipment.

This device complies with Part 15 of the FCC Rules. Operation is subject to the following two conditions: (1) this device may not cause harmful interference, and (2) this device must accept any interference received, including interference that may cause undesired operation.

NOTE: This equipment has been tested and found to comply with the limits for a Class B digital device, pursuant to Part 15 of the FCC Rules. These limits are designed to provide reasonable protection against harmful interference in a residential installation. This equipment generates, uses and can radiate radio frequency energy and, if not installed and used in accordance with the instructions, may cause harmful interference to radio communications. However, there is no guarantee that interference will not occur in a particular installation.

If this equipment does cause harmful interference to radio or television reception, which can be determined by turning the equipment off and on, the user is encouraged to try to correct the interference by one or more of the following measures:

- Reorient or relocate the receiving antenna.
- Increase the separation between the equipment and receiver.
- Connect the equipment into an outlet on a circuit different from that to which the receiver is connected.
- Consult the dealer or an experienced radio/TV technician for help.

FCC Radiation Exposure Statement:

This equipment complies with FCC radiation exposure limits set forth for an uncontrolled environment. This equipment should be installed and operated with a minimum distance of 20cm between the radiator and your body.

This transmitter must not be co-located or operating in conjunction with any other antenna or

transmitter.

FOSHAN SHUNDE SUNNAI ELECTRICAL APPLIANCE CO., LTD.

Add: (THE SECOND PHASE) INDUSTRIAL ZONE XINGTAN TOWN SHUNDE DISTRICT
FOSHAN CITY

TEL: 0757-26363011

FAX: 0757-26363013

Internet: www.cnsunnai.com