

**PHILIPS**

Wireless Speaker

TAS2505

# User manual



Register your product and get support at  
[www.philips.com/support](http://www.philips.com/support)



# Contents

<b>1</b>	<b>Important</b>	<b>2</b>
	Safety	2
<b>2</b>	<b>Your wireless speaker</b>	<b>3</b>
	Introduction	3
	What's in the box	3
	Overview of the speaker	3
<b>3</b>	<b>Get started</b>	<b>4</b>
	Charge the built-in battery	4
	Turn on/off	4
<b>4</b>	<b>Play from Bluetooth devices</b>	<b>5</b>
	Play from Bluetooth devices	5
	Control playback	5
	Control phone call	5
	Pairing for stereo mode	5
<b>5</b>	<b>Product information</b>	<b>6</b>
<b>6</b>	<b>Troubleshooting</b>	<b>7</b>
	General	7
	Bluetooth	7
<b>7</b>	<b>Notice</b>	<b>8</b>
	Compliance	8
	Care of the environment	8
	FCC Statement	8
	Trademark notice	9



# I Important



## Warning

- Never remove the casing of this product.
- Never lubricate any part of this product.
- Never place this product on other electrical equipment.
- Keep this product away from direct sunlight, naked flames or heat

- Read these instructions.
- Heed all warnings.
- Follow all instructions.
- Do not use this apparatus near water.
- Do not install near any heat sources such as radiators, heat registers, stoves, or other apparatus (including amplifiers) that produce heat.
- Only use attachments/accessories specified by the manufacturer.
- Refer all servicing to qualified service personnel. Servicing is required when the apparatus has been damaged in any way, such as liquid has been spilled or objects have fallen into the apparatus, the apparatus has been exposed to rain or moisture, does not operate normally, or has been dropped.
- The battery shall not be exposed to excessive heat such as sunshine, fire or the like
- Apparatus shall not be exposed to dripping or splashing.
- Do not place any sources of danger on the apparatus (e.g. liquid filled objects, lighted candles).



## Note

- The type plate is located on the bottom of the apparatus.



## 2 Your portable speaker

Congratulations on your purchase, and welcome to Philips! To fully benefit from the support that Philips offers, register your product at [www.philips.com/welcome](http://www.philips.com/welcome).

### Introduction

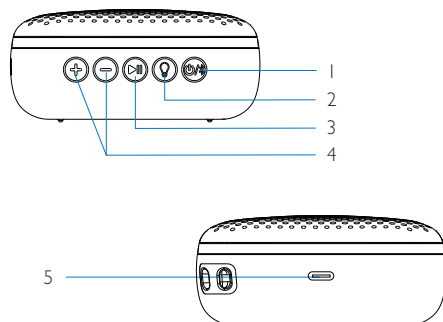
With this speaker, you can enjoy audio from Bluetooth-enabled devices or other external devices.

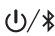



### What's in the box

Check and identify the contents of your package:

- Speaker
- USB cable for charging
- Quick start guide
- Safety sheet
- Worldwide warranty
- Lanyard

### Overview of the speaker



- 1** 
  - Turn the speaker on or off.
  - Press and hold 2 second for power on, with voice prompt, LED blue flashing.
    - ↳ Fast flashing blue light for pairing.
    - ↳ Slow flashing blue light to reconnect the last connected device automatically.
  - Press and hold 2 second for power off, with voice prompt, LED off.
  - Solid blue once paired.
  - Press and hold 5 second to clear pairing information / to enter pairing mode, fast flashing blue light.
  - Automatically turn off in 15mins without connection.
- 2** 
  - Short press for turn on music light.
  - Short press again for turn off music light.
- 3** 
  - Press to pause or resume play, press twice to play the next track.
  - Music play/pause when there is an incoming/outgoing call, flashing Blue slow, and resumes when your phone call ends.
  - Press to answer an incoming call. Press and hold for two seconds to reject an incoming call. During a call, press to end the current call. During a call, press and hold for two seconds to transfer the call to your mobile device.
- 4** 
  - Total vol 0 to 16 levels. short press for vol down/up one level, press & hold for continue down/up.
  - Voice prompt for vol reach Max or Min vol level.
- 5** DC IN
  - Recharge the built-in battery.



## 3 Get started

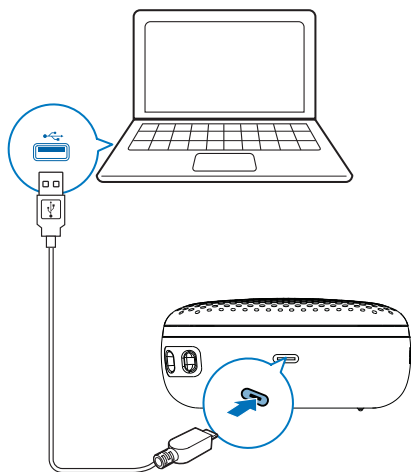
Always follow the instructions in this chapter in sequence.

### Charge the built-in battery

The speaker is powered by a built-in rechargeable battery.

#### Note

- Before use, fully charge the built-in battery.
- The micro USB socket is for charging only.
- It takes you approximately two and a half hours to fully charge the battery.
- Rechargeable battery has a limited number of charge cycles. Battery life and number of charge cycles vary by use and settings.



Connect the USB cable between

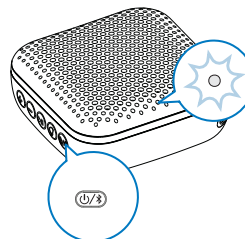
- the DC IN socket on the speaker, and
- a USB socket on a computer.

The LED indicator indicates the battery status.

	Under charging	Fully charged
"OFF" mode	Solid red	Off
"Bluetooth" mode	Solid red	Solid blue

### Turn on/off

- To turn the speaker on, press and hold "Power" for two seconds, with power on voice prompt and Blue LED indicator starts blinking.



- To turn the speaker off, press and hold "Power" for two seconds again, with power off voice prompt and LED off.
- Auto off in 15 Minutes if no Bluetooth connection



## 4 Play from Bluetooth devices

With this speaker, you can listen to audio from Bluetooth-enabled devices.

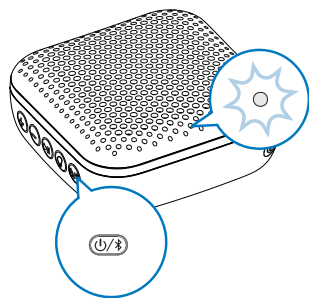


### Note

- The speaker can memorize a maximum of eight paired devices. The ninth paired device will replace the first one.
- Any obstacle between this speaker and a Bluetooth device can reduce the operational range.
- Keep away from any other electronic device that may cause interference.
- The operational range between this speaker and a Bluetooth device is approximately 20 meters (66 feet).

### Connect a device

- 1 To turn the speaker on
  - » The LED indicator blinks blue.



- 2 On your Bluetooth device, enable Bluetooth and search for Bluetooth devices that can be paired (refer to the user manual of the device).

- 3 Select [Philips S2505] displayed on your device for pairing and connection. If necessary, input "0000" as the pairing password.
  - » After successful pairing and connection, the speaker beeps twice, and the LED indicator turns solid blue.
- If you cannot find [Philips S2505] on your device, press and hold PAIRING for more than three seconds until you hear triple beeps.
- 4 Play Bluetooth device.



### Tip

- You can use your Bluetooth device to control play.

LED indicator (blue)

Indicator	Bluetooth connection status
Fast blinking (2Hz)	Pairing
Slow blinking (1Hz)	Connecting
Solid blue	Connected

### Disconnect a device

- Press and hold PAIRING for more than five seconds;
  - » The speaker beeps for three times.
- Disable Bluetooth on your device; or
- Move the device beyond the communication range.
  - » The speaker beeps twice, and the LED indicator blinks blue.



### Note

- Before connecting another Bluetooth device, disconnect the current device first.



---

## Reconnect a device

When you turn on the speaker, it will reconnect the last connected device automatically; If not, select [Philips S2505] on your Bluetooth device to start connection.

Bluetooth Profile



## 5 Product information



### Note

- Product information is subject to change without prior notice.

### Amplifier

Rated Output Power	3W RMS
Frequency Response	120Hz - 18kHz
Signal to Noise Ratio	> 70 dBA

### Speaker

Speaker Impedance	4 ohm
Speaker Driver	1.75" full range
Sensitivity	>80dB/m/W

### Bluetooth

Bluetooth Version	V5.0
Bluetooth Profile	A2DP V1.3, HFP V1.7 AVRCP V1.6
Bluetooth Frequency Brand	2402-2480 MHz
Bluetooth Range	20 m (Free space)

### General information

Power Supply (through micro USB socket)	5V, 1 A
Built-in Li-polymer Battery	3.7V, 850mAh
Dimensions - Main Unit (W x H x D)	91.5 x 91 x 41mm
Weight - Main Unit	0.19 kg
Operation Ambient	0°C~40°C
IP protection class	IPX7



## 6 Troubleshooting



### Warning

- Never remove the casing of this device.

To keep the warranty valid, never try to repair the system yourself.

If you encounter problems when using this device, check the following points before requesting service. If the problem remains unsolved, go to the Philips Web page ([www.philips.com/support](http://www.philips.com/support)). When you contact Philips, make sure that the device is nearby and the model number and serial number are available.

---

### General

#### No power

- Recharge your speaker.

#### No sound

- Make sure that your Bluetooth device is within the effective operational range.

#### No response from the speaker

- Recharge the speaker.

---

### About Bluetooth device

**The audio quality is poor after connection with a Bluetooth-enabled device.**

- The Bluetooth reception is poor: Move the device closer to this product or remove any obstacle between them.

**Fail to find [Philips S2505] on your device for pairing.**

**Cannot connect with the device.**

- The Bluetooth function of the device is not enabled. Refer to the user manual of the device for how to enable the function.
- This product is already connected with another Bluetooth-enabled device. Disconnect that device and then try again.

**The paired device connects and disconnects constantly.**

- The Bluetooth reception is poor: Move the device closer to this product or remove any obstacle between them.
- For some devices, Bluetooth connection may be deactivated automatically as a power-saving feature. This does not indicate any malfunction of this product.



## 7 Notice

Any changes or modifications made to this device that are not expressly approved by MMD Hong Kong Holding Limited may void the user's authority to operate the equipment.

### Compliance



Hereby, MMD Hong Kong Holding Limited declares that this product is in compliance with the essential requirements and other relevant provisions of Directive 1999/5/EC. You can find the Declaration of Conformity on [www.philips.com/support](http://www.philips.com/support).

### Care of the environment

#### Disposal of your old product and battery



Your product is designed and manufactured with high quality materials and components, which can be recycled and reused.



This symbol on a product means that the product is covered by European Directive 2012/19/EU.



This symbol means that the product contains a built-in rechargeable battery covered by European Directive 2013/56/EU which cannot be disposed of with normal household waste. We strongly advise you to take your product to

an official collection point or a Philips service centre to have a professional remove the rechargeable battery.

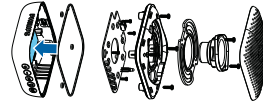
Inform yourself about the local separate collection system for electrical and electronic products and rechargeable batteries. Follow local rules and never dispose of the product and rechargeable batteries with normal household waste. Correct disposal of old products and rechargeable batteries helps prevent negative consequences for the environment and human health.



#### Caution

- Removal of the built-in battery invalidates the warranty and may destroy the product.

Always bring your product to a professional to remove the built-in battery.



#### Environmental information

All unnecessary packaging has been omitted. We have tried to make the packaging easy to separate into three materials: cardboard (box), polystyrene foam (buffer) and polyethylene (bags, protective foam sheet.)

Your system consists of materials which can be recycled and reused if disassembled by a specialized company. Please observe the local regulations regarding the disposal of packaging materials, exhausted batteries and old equipment.

Disposal of a battery into fire or a hot oven, or mechanically crushing or cutting of a battery, that can result in an explosion.

### Trademark notice



The Bluetooth<sup>®</sup> word mark and logos are registered trademarks owned by the Bluetooth SIG, Inc. and any use of such marks by **MMD Hong Kong Holding Limited** is under license. Other trademarks and trade names are those of their respective owners.





2018 © MMD Hong Kong Holding Limited.  
All rights reserved. This product has been manufactured by and is sold under the responsibility of  
MMD Hong Kong Holding Limited, and MMD Hong Kong Holding Limited is the warrantor in relation  
to this product. The Philips trademark and the Philips Shield Emblem are registered trademarks  
of Koninklijke Philips N.V. used under license.  
TAS2505\_00\_UM\_V1.0

