

102MM

145mm

may cause harmful interference to radio communications. However, there is no guarantee that interference will not occur in a particular installation. If this equipment does cause harmful interference to radio or television reception, which can be determined by turning the equipment off and on, the user is encouraged to try to correct the interference by one or more of the following measures:

- Reorient or relocate the receiving antenna.
- Increase the separation between the equipment and receiver.
- Connect the equipment into an outlet on a circuit different from that to which the receiver is connected.
- Consult the dealer or an experienced radio/TV technician for help.

FCC Radiation Exposure Statement

This equipment should be installed and operated with minimum distance 20cm between the radiator & your body. This transmitter must not be co-located or operating in conjunction with any other antenna or transmitter.

2

SMART LED BULB

Environmental Specification:

- Only install in operating environments between -20°C and + 40°C (-4°F and +104°F).

FCC Caution: Any Changes or modifications not expressly approved by the party responsible for compliance could void the user's authority to operate the equipment.

Federal Communication Commission Interference Statement

This device complies with part 15 of the FCC Rules. Operation is subject to the following two conditions: (1) This device may not cause harmful interference, and (2) this device must accept any interference received, including interference that may cause undesired operation. This equipment has been tested and found to comply with the limits for a Class B digital device, pursuant to part 15 of the FCC Rules. These limits are designed to provide reasonable protection against harmful interference in a residential installation. This equipment generates, uses and can radiate radio frequency energy and, if not installed and used in accordance with the instructions,

1

165mm

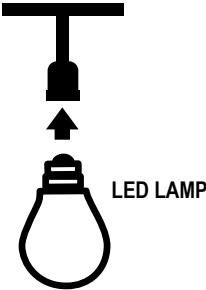
LED LAMP

Installation Guide

1 INSTALL YOUR LIGHT BULB

- Install your light bulb(s) into a socket

NOTE: Constant power to the bulb(s) is required at all times



2 Download the App



- Download the Cree Lighting app from the App Store or Google Play
- Register an account on your Cree Lighting app

3 Pairing Bulb to App

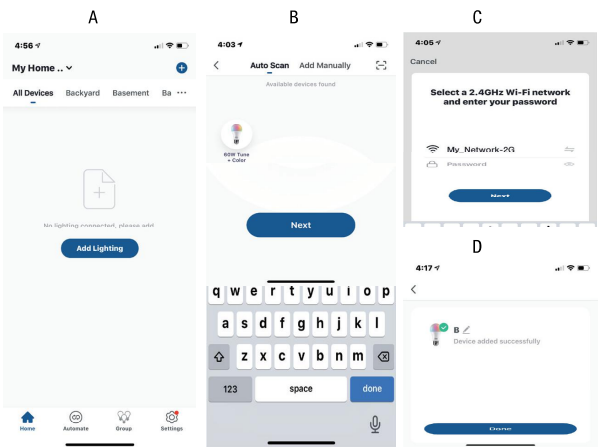
- In the Cree lighting app, tap the + sign in the upper righthand corner of the Home screen
- The bulb you are pairing will appear on screen, tap Next
- The Wi-Fi network your phone is connected to will appear. You can change your network (if needed) and enter password
- The Cree Lighting app will add your bulb

Be sure to connect to a 2.4 GHz WiFi network that covers your installation location.

NOTE: If the bulb is not flashing, please reset the bulb into pairing mode by turning it off and on four times until it begins to slowly flash.

4 NAMING DEVICES

- Once added, you can rename your bulb by tapping the pencil icon next to the name – then click Done



200mm