

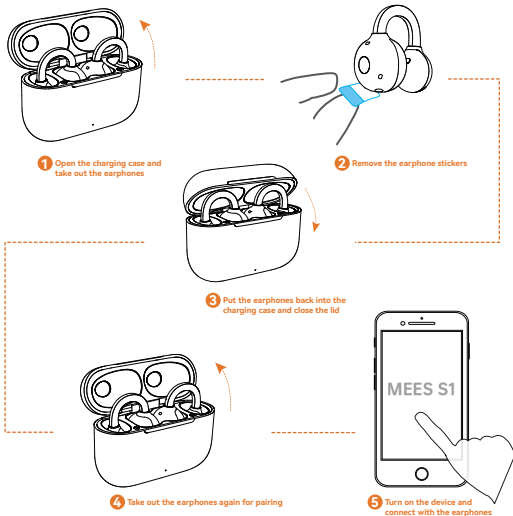
MEES S1

FCC ID:2AR23-MS7873

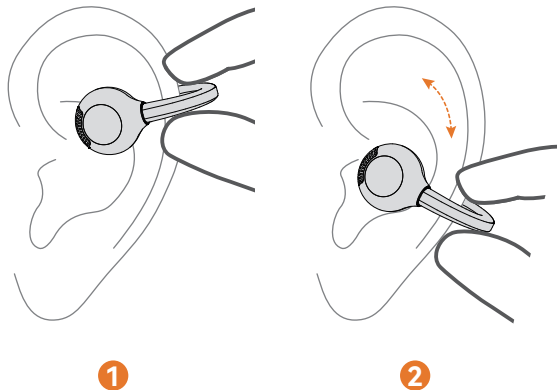
User Guide



First Pairing



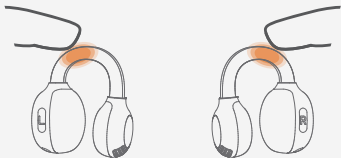
Wearing Method



Adjust up and down as shown in the figure to find the most comfortable position, Play audio and adjust the earphones for the best listening experience.



Control Method



Tapping method: Tap any position on the earphone

L(Left Ear)		R(Right Ear)	
Double tap	Play/Pause music Answer/End calls	Double tap	Play/Pause music Answer/End calls
Triple tap	Previous track Reject incoming calls/Abort dialing	Triple tap	Next track, Reject incoming calls/ Abort dialing
Four taps	Voice assistant	Four taps	Voice assistant
Five taps	Dual device connection	Five taps	Dual device connection
Seven taps	Clear pairing	Seven taps	Clear pairing

Product Specifications

Product Name	MEES S1
Product Model	MS7873
Bluetooth Version	BT 5.4
Transmission Distance	10M
Battery Capacity	Earphone: 50 mAh Charging case: 300 mAh
Input	5V=0.5A
Charging Time	Approximately 1.5 H
Battery Life	Approximately 6 H
Frequency Range	2.40GHz~2.48GHz
Operation Method	Multi - function tapping
Packaging List	Earphones, User Manual, Charging Cable

Important Safety Instructions

- Do not disassemble.
- Keep out of reach of children. This product contains small parts that may pose a choking hazard.
- Batteries should not be exposed to excessive heat, such as sunlight, fire, etc.
- Do not use this product in environments with excessively high or low temperatures, and do not expose this product to strong sunlight or very humid environments.
- Ensure that the charging port is free of liquid, sweat or water during charging.



Hearing Safety

- To avoid hearing damage, do not listen at high volume for a long time.
- Do not turn the volume too high to avoid being unable to hear surrounding sounds.
- Do not use the earphones while driving.
- In potentially dangerous situations, you should be cautious or temporarily stop using them.

Warning:

Changes or modifications to this unit not expressly approved by the party responsible for compliance could void the user's authority to operate the equipment.

NOTE:

This device complies with part 15 of the FCC Rules. Operation is subject to the following two conditions: (1) This device may not cause harmful interference, and (2) this device must accept any interference received, including interference that may cause undesired operation.

FCC Statement:

This equipment has been tested and found to comply with the limits for a Class B digital device, pursuant to part 15 of the FCC Rules. These limits are designed to provide reasonable protection against harmful interference in a residential installation. This equipment generates, uses and can radiate radio frequency energy and, if not installed and used in accordance with the instructions, may cause harmful interference to radio communications. However, there is no guarantee that interference will not occur in a particular installation. If this equipment does cause harmful interference to radio or television reception, which can be determined by turning the equipment off and on, the user is encouraged to try to correct the interference by one or more of the following measures:

- Reorient or relocate the receiving antenna.
- Increase the separation between the equipment and receiver.
- Connect the equipment into an outlet on a circuit different from that to which the receiver is connected.
- Consult the dealer or an experienced radio/TV technician for help.

RF exposure compliance statement:

This device has been evaluated to meet the general RF exposure requirement