

# Kaadas

## KA210A-P

### Smart Lock

Installation Guide / Quick Start Guide



Thank you for purchasing our products. Please review this manual thoroughly before operating your device. All pictures in this manual are for illustration purpose only. Actual product may vary due to product upgrade.

# Installation Guide

*Read this manual carefully before installing and operating.*

P 3	STEP 1: Prepare the door and check dimensions
P 4	STEP 2: Install the latch and strike
P 6	STEP 3: Install exterior assembly
P 8	STEP 4: Install interior assembly
P11	STEP 5: Door handing

# Quick Start Guide

P 12	At a Glance
P 13	How to Lock/Unlock
P 14	Definitions
P15	Z-Wave® Module Pairing Instructions
P16	Quick Set Up
P18	Factory Default Settings
P19	(Optional) Bluetooth Pairing Instructions
P20	Troubleshooting
P21	FCC Statement & Warnings



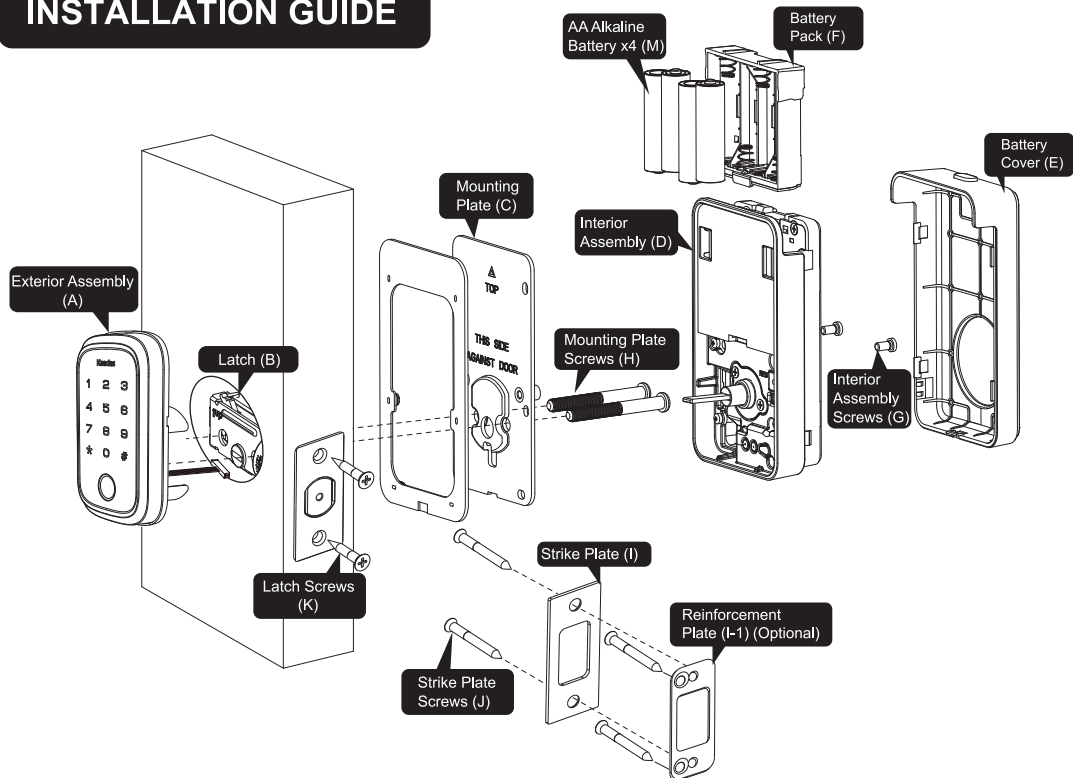
**Do not use an electronic screwdriver or drill during installation.**



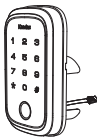
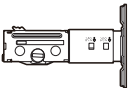


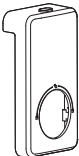
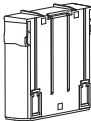

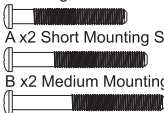







## **IMPORTANT:**

**Do not load batteries until the lock is completely installed.**

# INSTALLATION GUIDE



## Parts List

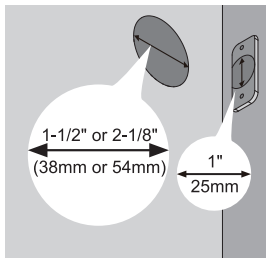
<p><b>A</b> Exterior Assembly</p> 	<p><b>B</b> Latch</p> 	<p><b>C</b> Mounting Plate</p> 	<p><b>D</b> Interior Assembly</p> 
<p><b>E</b> Battery Cover</p> 	<p><b>F</b> Battery Pack</p> 	<p><b>G</b> Interior Assembly Screws x2 </p> <p><b>H</b> Mounting Plate Screws x6</p> <p>A x2 Short Mounting Screws (1-3/8" - 1-3/4")</p> <p>B x2 Medium Mounting Screws (1-3/4" - 2-1/8")</p> <p>C x2 Long Mounting Screws (2-1/8" - 2-1/4")</p> 	
<p><b>I</b> Strike Plate</p>  <p><b>I-1</b> Reinforcement Plate (Optional)</p> 	<p><b>J</b> Strike Plate Screws x4</p>  <p><b>K</b> Latch Screws x2</p> 		<p><b>M</b> AA Alkaline Battery x4</p>  <p><b>L</b> Reset Tool</p>  <p><b>N</b> Drive-In Collar (Optional)</p> 

# 1 Prepare the door and check dimensions

A

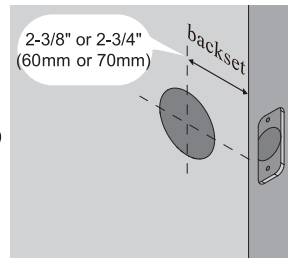
Measure to confirm that the bore hole is 1-1/2" or 2-1/8" (38mm or 54mm).

Measure to confirm that the hole in the door edge is 1" (25mm).



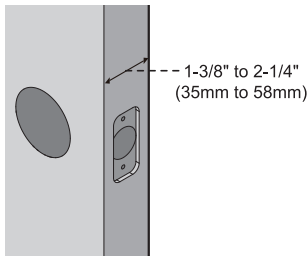
B

Measure to confirm that the backset is either 2-3/8" or 2-3/4" (60mm or 70mm)



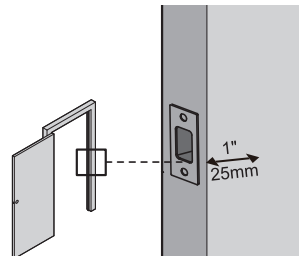
C

Measure to confirm that the door is 1-3/8" to 2-1/4" (35mm to 58mm) thick.



D

Make sure the hole in the door frame is drilled a minimum of 1" (25mm) deep, to leave enough space for the deadbolt to extend into the door frame when the door is locked.

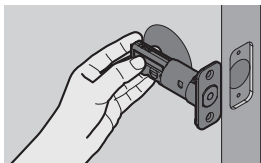


**Note:** Make sure the door frame is aligned with the door and there are no obstructions stuck in the door frame.

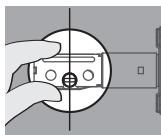
## 2 Install the latch and strike

A

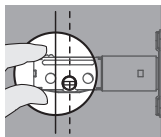
Determine the backset and adjust the latch.



Hold the latch in front of the bore hole, with the latch face flush against the door edge. Is the slotted hole centered in the door hole?

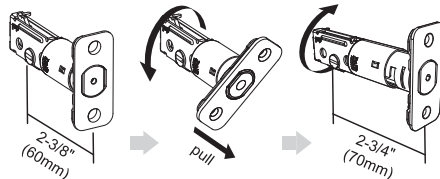
**YES**

No adjustment is required.  
Proceed to the next step.

**NO**

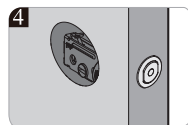
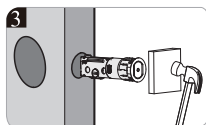
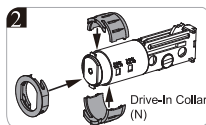
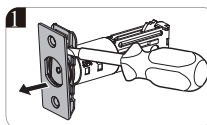
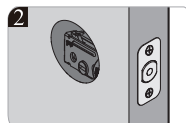
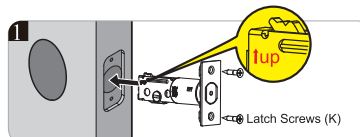
Slotted hole is  
NOT centered.

Rotate and pull the  
latch as shown to  
extend latch.



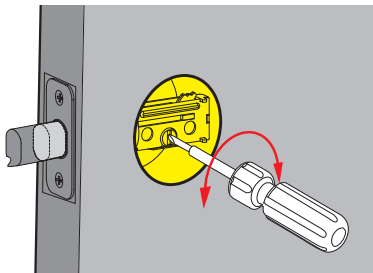
B

Install the latch.



**Note:** For a better installation of the latch, If the door bore hole is 38mm, you will need to use the tool to enlarge the inner of the bore hole slightly.

- C Use a screwdriver to test if deadbolt works smoothly.

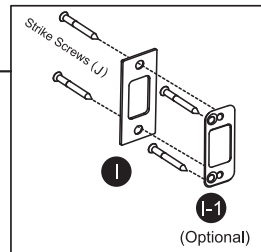
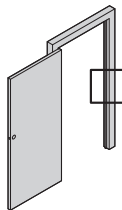


- D Install strike on the door frame.



**IMPORTANT:**

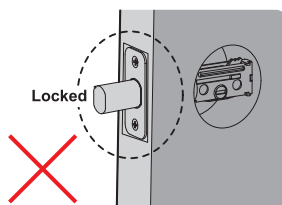
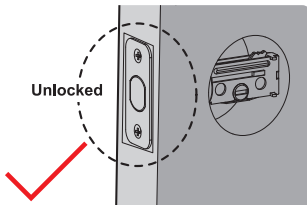
Make sure the hole in the door frame is drilled a minimum of 1" (25mm) deep.



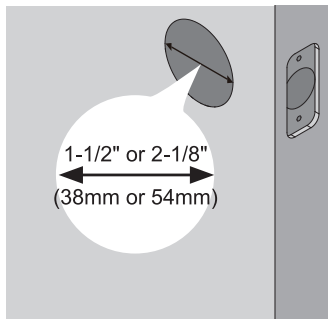
### 3 Install exterior assembly

#### ⚠ IMPORTANT:

Before installation, make sure the latch is fully retracted (in the unlocked position).



- A Measure the diameter of the hole in the door.



1-1/2" (38mm)



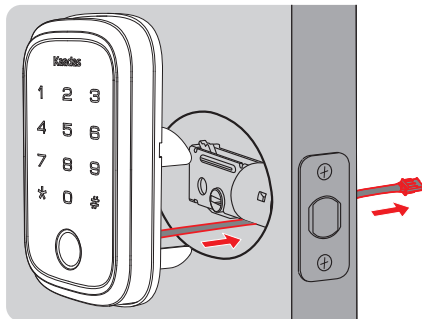
Remove the spacer.

2-1/8" (54mm)

Proceed to the next step.

- B With the latch bolt fully retracted (in the unlocked position). Holding the exterior assembly flush with the door, route the cable through the door hole.

**Note:** The cable must pass under the door latch.





C 1. Route the cable through the outlet hole in the mounting plate.

2. Refer to the door thickness to select the correct mounting plate screws (a, b, c).



x2 Short Mounting Screws (1-3/8" - 1-3/4")

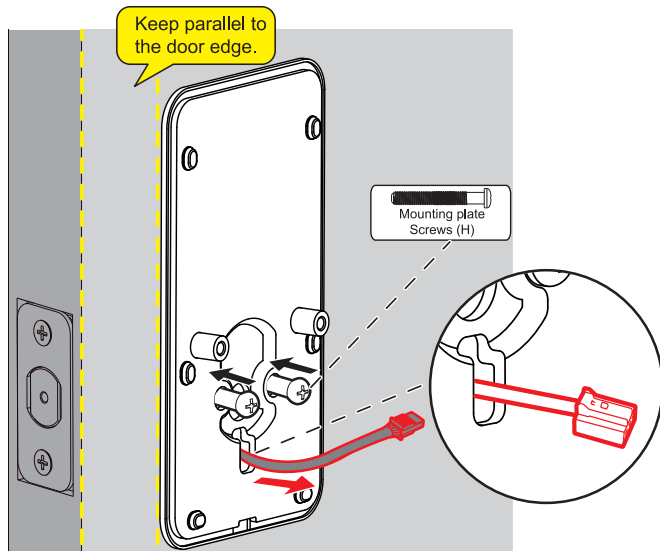


x2 Medium Mounting Screws (1-3/4" - 2-1/8")



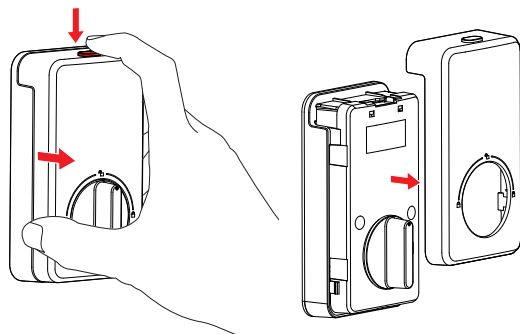
x2 Long Mounting Screws (2-1/8" - 2-1/4")

3. Tighten the mounting plate screws with a screwdriver to secure the mounting plate. Make sure the mounting plate, exterior assembly, and the door edge are parallel as you tighten the screws, and avoid over-tightening.

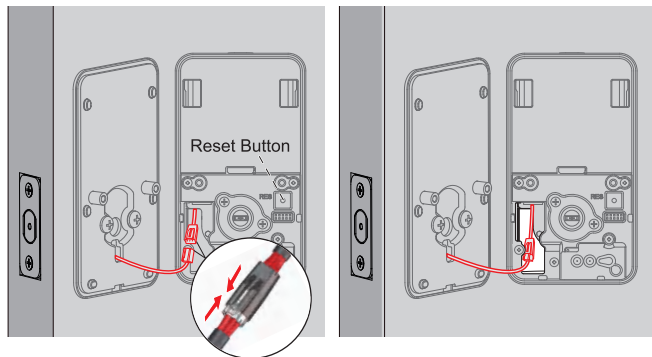


**4** Install interior assembly

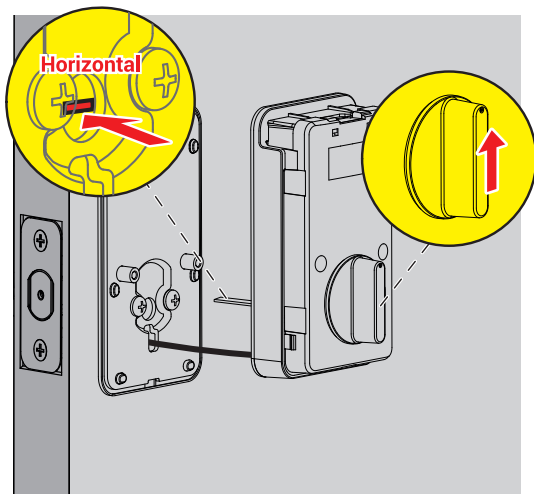
- A** Remove the battery cover. Press and hold the button on the top of the cover, then pull the top of the cover outward to remove it completely.



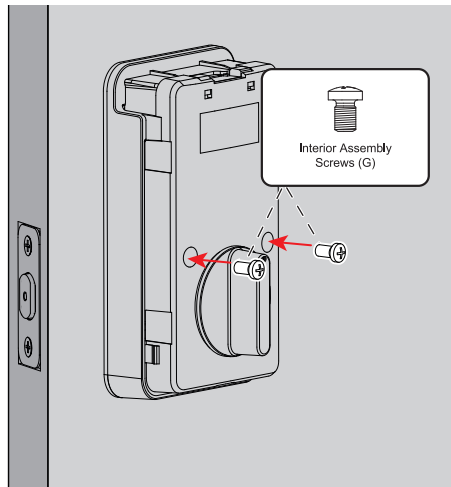
- B** Secure the front and rear cable connectors tightly, then place the secured connectors and any excess cable inside the bottom of the interior assembly.



- C Keep the thumb turn in the vertical position, and insert the tailpiece horizontally into the latch hole.

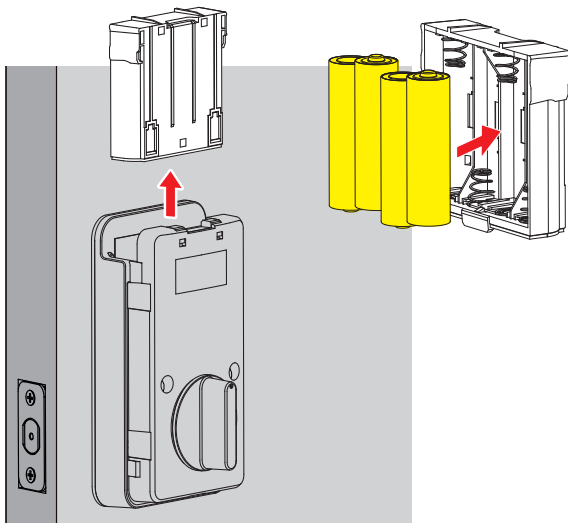


- D Attach interior assembly onto the mounting plate and tighten with 2 screws.



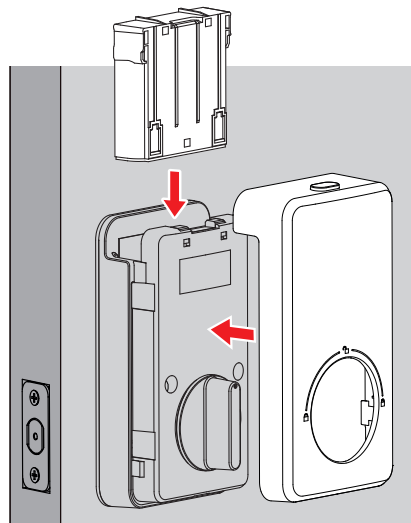
- E Pull the battery pack upward from the interior assembly and insert 4 AA batteries into the battery pack.

**Note:** Please use all new, non-rechargeable Alkaline batteries only.



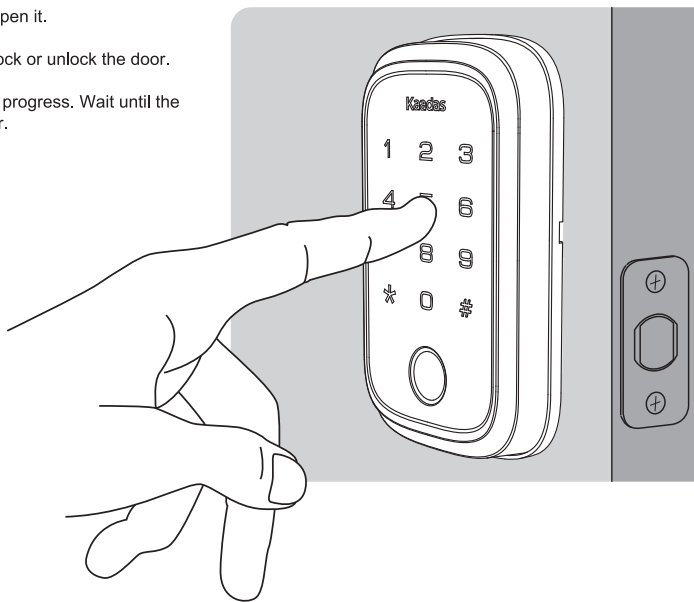
- F Insert the battery pack into the interior assembly and install the battery cover.

**Note:** When inserting the battery pack, ensure that the side with the battery installation faces the side of the door.



## 5 Door Handling

1. Check if the door is closed. If it's closed, open it.
2. Enter the default PIN Code 12345678 to lock or unlock the door.
3. The deadbolt will perform a door-handling progress. Wait until the latch bolt stops moving before using the door.

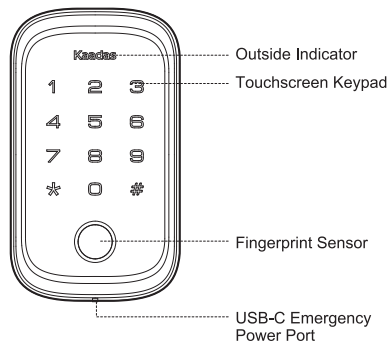


# QUICK START GUIDE

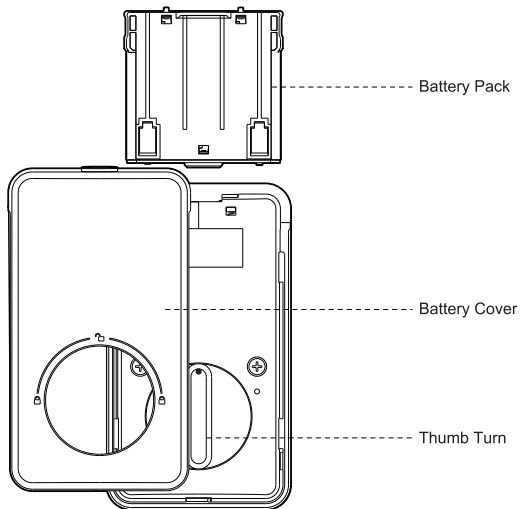
## At a Glance

---

### Exterior Assembly

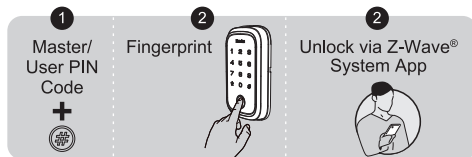


### Interior Assembly

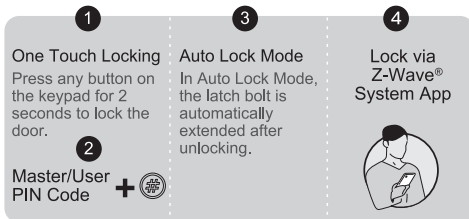


## How to Lock / Unlock

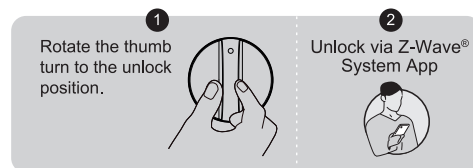
### Unlocking the door from outside



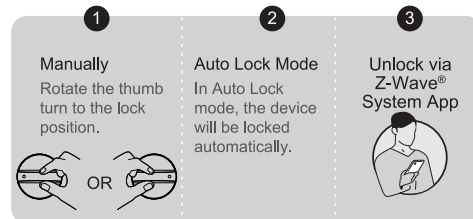
### Locking the door from outside



### Unlocking the door from inside



### Locking the door from inside



## Definitions

---

### **Master PIN Code**

Required for programming and feature settings, the Master PIN Code can be used to unlock the door while in away mode. The default Master PIN Code needs to be changed before programming the lock for security reasons.

### **Auto Lock**

If the Auto lock feature is enabled, the lock will lock the door 30 seconds after it has been unlocked. This feature is off by default. You can set the time delay for 30s, 60s, 120s and 180s in Master Mode.

### **Wrong Entry Limit**

After 10 attempts of entering an invalid User PIN Code, the unit will shut down for 3 minutes.

### **Away Mode**

This is a safety feature for you when you leave your house for vacation or a long trip. When you activate Away Mode, all User PIN Codes and user fingerprints will be locked until the Master PIN Code is entered on the keypad. When the lock is unlocked by the thumb turn, an alarm will sound for 1 minute. By entering the Master PIN Code on the keypad, you can disable the alarm and Away Mode.

### **Silent Mode**

The touchscreen keypad will beep pushed but can be muted. Low Battery and Wrong Entry Limit alarms will still sound in Silent Mode.

### **One-Time PIN Code**

You can add the One-Time PIN Code in Master Mode in advance. When the need arises, you can send the One-Time PIN Code to visitors or friends. This code can only be used once and is automatically deleted when used.

### **Low Battery Alarm**

If the battery indicator keeps flashing, the batteries are getting low. For the best performance replace with four new AA alkaline batteries.

### **Backup USB-C Power Port**

The lock will alert you when the batteries are running low. However, if you forget to replace them, connect a power source via the USB-C Power Port at the bottom of the exterior assembly for temporary powering, so you can enter your PIN Code and Fingerprint, and get in. Remember to replace the batteries once you enter your home in this case.

### **Capacities**

1. User PIN Code (4 to 10 digits): A total of 250 User PIN Codes (including One-Time PIN Code) can be programmed and stored in the lock.
2. User Fingerprint: 50 fingerprints can be programmed and stored in the lock.



## Z-Wave® Module Pairing Instructions

---

1. Follow the user guide of your Smart Hub Gateway to enter Learning or Pairing Mode.
2. Touch the keypad with your hand to activate the lock.
3. Enter Master Mode.



4. Enter "0" to enter Network Settings.
5. Enter "1" + # to join the network; Enter "2" + # to exit the network.
6. Follow the steps on your Z-Wave® network gateway/controller to connect to the proper Z-Wave® network.



### IMPORTANT:

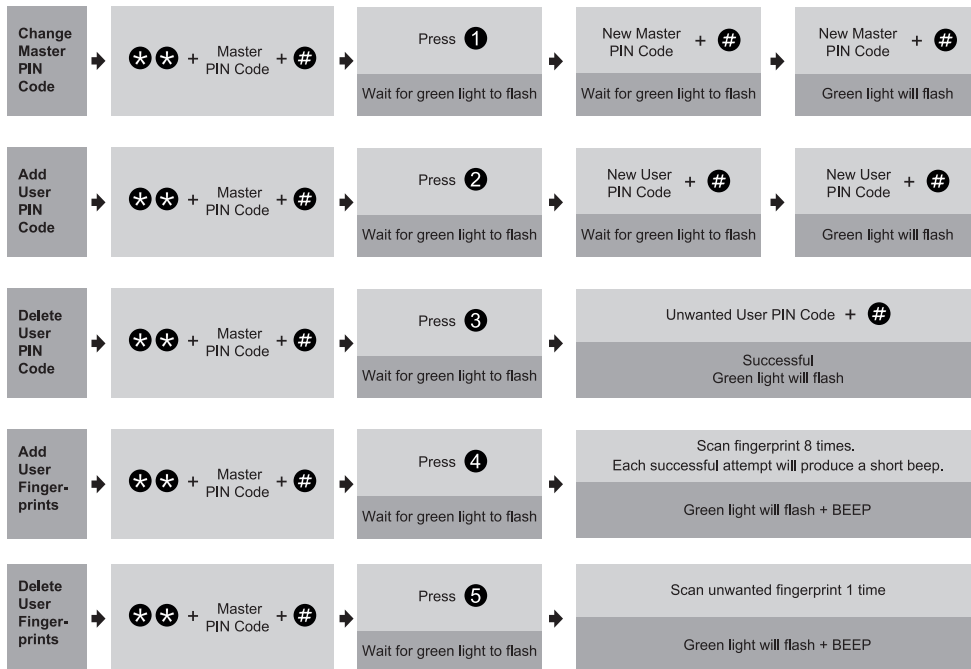
If the lock is connected to a smart hub gateway or controller, it is recommended that the programming of all PIN Codes is completed through the 3rd party user interface to ensure stable communication between the lock and controller is maintained.

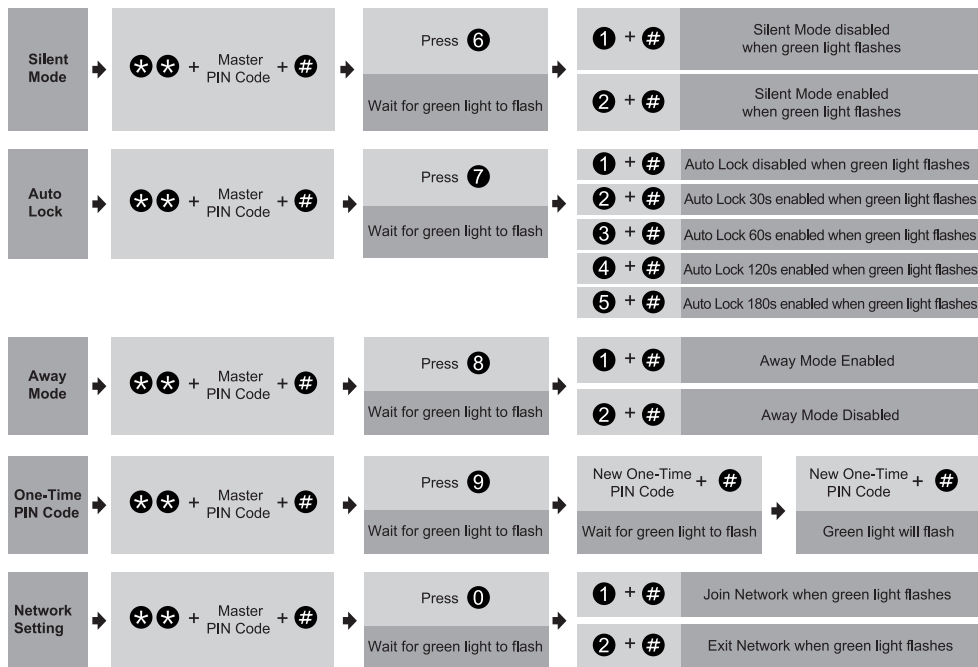
## Quick Set Up



### IMPORTANT:

The default Master Code is **12345678**.  
It is required that you change it to a code of your own before programming.





**Notes:**

1. Beeps only sound when the Silent Mode is disabled.
2. If the indicator light flashes red, your setting failed and you will need to redo the operation.
3. In master mode, the Logo light is always on in blue color

## Factory Default Settings

### How to Reset?

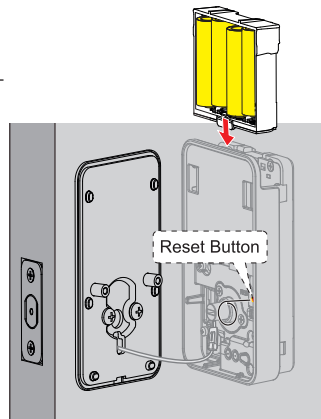
Resetting the device will delete all User PIN Codes and Master PIN Code stored in the lock.

**Step 1:** Keep the door open and unlocked.

**Step 2:** Pull the battery pack upward from the interior assembly.

**Step 3:** Using the reset tool (L), insert it into the RES hole and hold it there while reinserting the battery pack. Keep the reset tool pressed for 5 seconds until the lock beeps and the status indicator flashes.

**Note:** When inserting the battery compartment, the battery side of the compartment must face the side of the door.



Settings	Factory Default
Master PIN Code	12345678
Auto Lock	Disabled
Silent Mode	Disabled
Wrong Entry Limit	10 times
Shutdown Time	3 Minutes
Away Mode	Disabled

## (Optional) Bluetooth Pairing Instructions

Download the KK Home App from the Apple Store or Google Play Store.



### Quick Set Up Tips

- Create an account in the KK Home App.
- Add the lock to your account in KK Home

**Methods 1:** Scan the QR Code found on the inside panel of the battery Cover to add your lock to the App.

**Methods 2:** Enable automatic scanning of peripheral devices on the App side, and click Add for the scanned devices.

### ! IMPORTANT:

- The Auto Lock is disabled by default, please complete the set up process and enable Auto Lock in the KK Home App.
- The first account to add the lock to their account becomes the administrator of the lock by default. Only the administrator account can manage users of the lock.
- To reset the lock, using the reset tool, press and hold the RES hole while reinserting the battery pack and keeping the RES pressed for 5 seconds until the lock beeps and the LED flashes. Log in to the KK Home App with the administrators account. Go to Setting and unbind the lock.

## Troubleshooting

Problem	Solution
The latch does not operate correctly after installation.	<ul style="list-style-type: none"> <li><input type="checkbox"/> Make sure the backset on the latch is set to the proper length. Refer to the Installation Guide.</li> <li><input type="checkbox"/> Make sure prior to installation the latch bolt is retracted. Refer to the Installation Guide.</li> <li><input type="checkbox"/> Restore to the factory default settings and enter the default Master PIN Code to set up the lock. Refer to the User Guide.</li> </ul>
Lock does not smoothly lock or unlock while using the thumb turn.	<ul style="list-style-type: none"> <li><input type="checkbox"/> Confirm the proper mounting plate screws are installed.</li> <li><input type="checkbox"/> Confirm the latch screws are not installed too tightly.</li> </ul>
Lock set up failed.	<ul style="list-style-type: none"> <li><input type="checkbox"/> Make sure the lock is installed correctly.</li> <li><input type="checkbox"/> Insert fresh batteries and make sure that the cable is properly connected, not pinched.</li> <li><input type="checkbox"/> After installation, reset the lock to the factory default settings.</li> </ul>
Touchscreen keypad is not responding.	<ul style="list-style-type: none"> <li><input type="checkbox"/> Make sure batteries are inserted correctly.</li> <li><input type="checkbox"/> If the battery indicator flashes continuously, the batteries are low. Replace them with four new AA alkaline batteries.</li> <li><input type="checkbox"/> Make sure that the cable is properly connected and has not been damaged during installation.</li> </ul>
Master PIN Code cannot be changed.	<ul style="list-style-type: none"> <li><input type="checkbox"/> Refer to the Quick Start Guide to reset the lock and reprogram all PIN Codes.</li> </ul>
I forgot my Master PIN Code.	<ul style="list-style-type: none"> <li><input type="checkbox"/> Perform a factory reset in order to erase all PIN Codes. Once the reset is complete, all PIN Codes will be erased, and the Master PIN Code will return to the default (12345678). For security reasons, change the Master PIN Code immediately.</li> </ul>
Auto Lock is not working.	<ul style="list-style-type: none"> <li><input type="checkbox"/> If the battery indicator blinks continuously, the batteries are weak. Replace them with four new batteries to get the best performance (alkaline batteries only). Refer to the Quick Set Up to activate the Auto Lock function.</li> </ul>
Fingerprint can't unlock.	<ul style="list-style-type: none"> <li><input type="checkbox"/> Clean the fingerprint sensor and try again.</li> </ul>
The lock's battery is dead.	<ul style="list-style-type: none"> <li><input type="checkbox"/> If inside the home, replace 4 AA Alkaline Batteries.</li> <li><input type="checkbox"/> If outside the home, connect a power bank to the backup USB-C power port for temporary powering. Remember to replace the batteries once you enter your home in this case.</li> </ul>

## FCC Statement

---

This equipment has been tested and found to comply with the limits for a Class B digital device, pursuant to part 15 of the FCC Rules. These limits are designed to provide reasonable protection against harmful interference in a residential installation. This equipment generates, uses and can radiate radio frequency energy and, if not installed and used in accordance with the instructions, may cause harmful interference to radio communications. However, there is no guarantee that interference will not occur in a particular installation. If this equipment does cause harmful interference to radio or television reception, which can be determined by turning the equipment off and on, the user is encouraged to try to correct the interference by one or more of the following measures:

- Reorient or relocate the receiving antenna.
- Increase the separation between the equipment and receiver.
- Connect the equipment into an outlet on a circuit different from that to which the receiver is connected.
- Consult the dealer or an experienced radio/TV technician for help.

Caution: Any changes or modifications to this device not explicitly approved by manufacturer could void your authority to operate this equipment.

This device complies with part 15 of the FCC Rules. Operation is subject to the following two conditions: (1) This device may not cause harmful interference, and (2) this device must accept any interference received, including interference that may cause undesired operation.

### RF Exposure Information

This equipment complies with FCC radiation exposure limits set forth for an uncontrolled environment. This equipment should be installed and operated with minimum distance 20cm between the radiator and your body.

## ISED Statement

---

This device complies with Innovation, Science and Economic Development Canada's licence-exempt RSS standard(s). Operation is subject to the following two conditions:

- (1) this device may not cause interference, and
- (2) this device must accept any interference, including interference that may cause undesired operation of the device.

Cet appareil est conforme aux normes RSS d'Innovation, Sciences et Développement économique Canada en matière d'exemption de licence. Son fonctionnement est soumis aux deux conditions suivantes?:

- (1) cet appareil ne doit pas provoquer d'interférences et
- (2) cet appareil doit accepter toute interférence, y compris celles qui peuvent provoquer un fonctionnement indésirable de l'appareil.

This Class B digital apparatus complies with Canadian ICES-003.

Cet appareil numérique de la classe B est conforme à la norme NMB-003 du

Canada.

### IC RF Statement:

When using the product, maintain a distance of 20cm from the body to ensure compliance with RF exposure requirements.

### Déclaration IC RF:

Lors de l'utilisation du produit, maintenez une distance de 20 cm du corps pour garantir conformité aux exigences d'exposition aux RF.

## Warnings

---

Failure to follow the below instructions could result in damage to the product and void the factory warranty.

This manufacturer advises that no lock can provide complete security by itself.

This lock may be defeated by forcible or technical means, or evaded by entry elsewhere on the property.

No lock can substitute for caution, awareness of your environment, and common sense.

### **Product Care:**

- This lockset is designed to provide the highest standard of product quality and performance. Care should be taken to ensure a long-lasting finish. When cleaning is required, use a soft, damp cloth. Using lacquer thinner, caustic soaps, abrasive cleaners or polishes could damage the coating and result in tarnishing.

- Avoid exposure to direct sunlight. Long-term exposure to direct sunlight may damage the lock.

- Do not install batteries until the lock is completely installed on door.