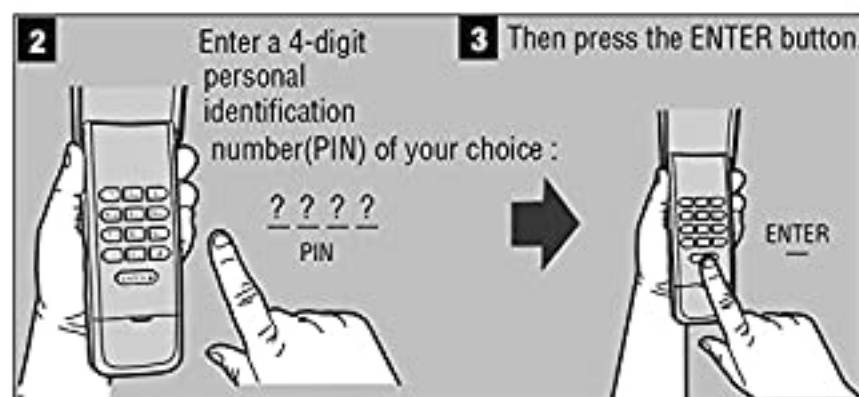
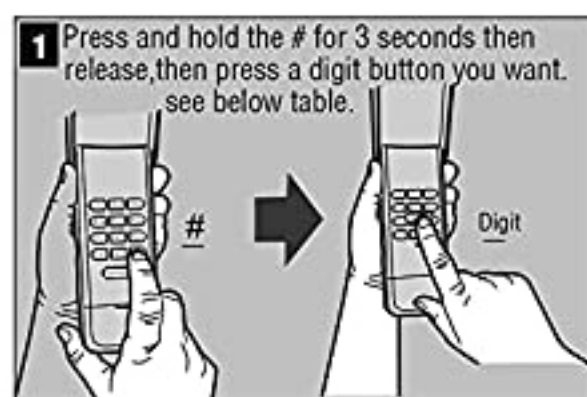


UNIVERSAL WIRELESS KEYPAD MODEL:878MAX

Choose garage door opener type and Set an initial PIN code:

- 1 Press and hold the # button for 3 seconds then release(until one beep heard),then press a Digit (to choose garage door opener type,see below table) on keypad. (LED blinks two times or two beeps heard.)
- 2 Enter a 4-digit personal identification number (PIN) of your choice: $\frac{? ? ? ?}{\text{PIN}}$
- 3 Press the ENTER button.



Digit: Garage Door Opener Type:

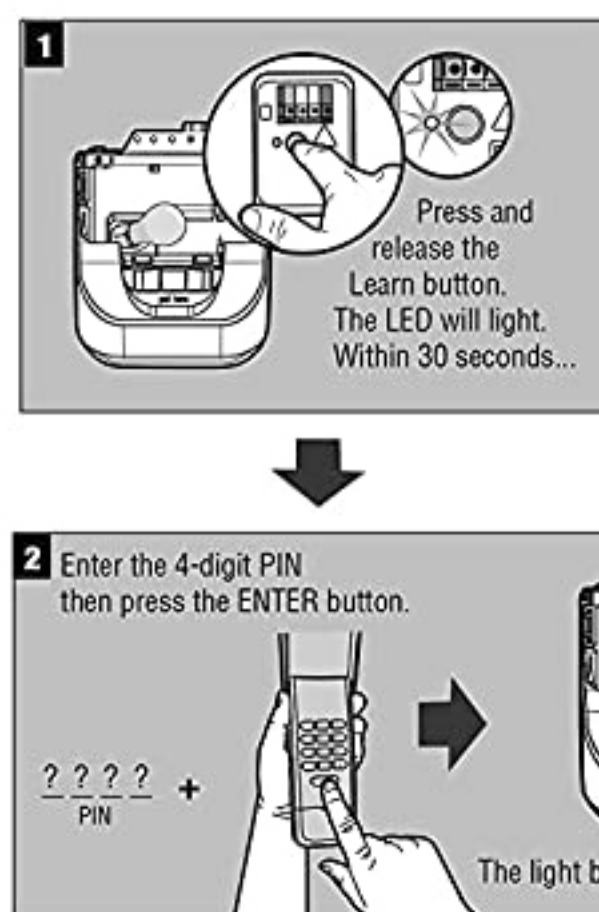
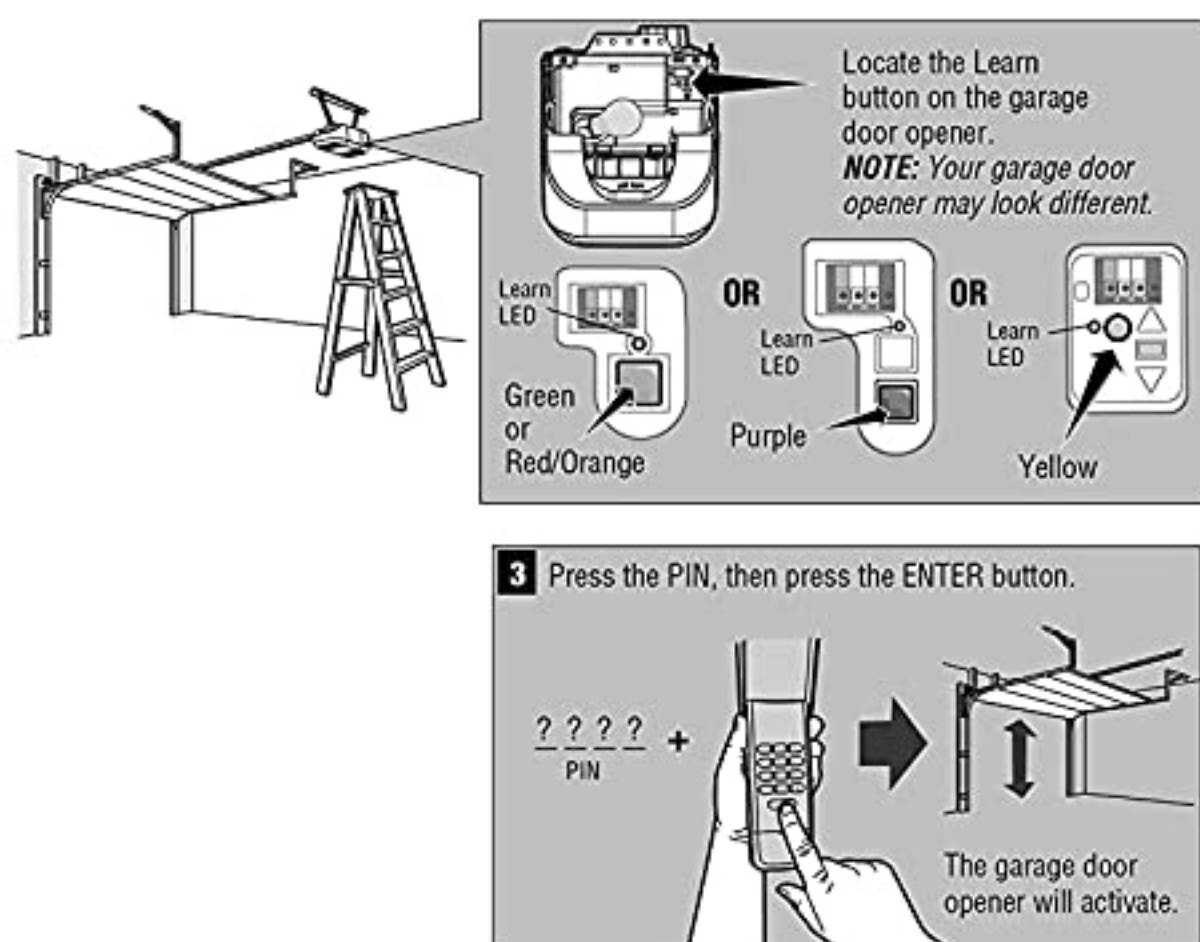
- | | |
|---|---|
| 1 | Liftmaster/Chamberlain/Craftsman Yellow Learn Button 2011-Current |
| 2 | Liftmaster/Chamberlain/Craftsman Purple Learn Button 2005-Current |
| 3 | Liftmaster/Chamberlain/Craftsman Orange or Red Learn Button 1997-2005 |
| 4 | Liftmaster/Chamberlain/Craftsman Green Learn Button 1993-1996 |

⚠ For example: If your garage door opener is the Yellow Learn Button of Liftmaster,you just press and hold # for 3 seconds then release(until one beep heard), then press 1 ,then enter a 4-digit PIN and press the ENTER button.

⚠ * Chamberlain ,Do-It, Master Mechanic, Raynor, True Value and Sears Craftsman are compatible with liftmaster technology.

Program the wireless keypad with garage door opener:

- 1 Press and release the learn button on garage door opener,the learn indicator light will glow steadily for 30 seconds.
- 2 Within 30 seconds,Enter the 4-digit PIN then press the ENTER button 1-2 times slowly on keypad until garage door opener lights flash or two clicks are heard. programming is complete.
- 3 To test operation,enter the PIN then press the ENTER button, the garage door opener will activate,the keypad will remain for 10 seconds,during this 10 seconds press the ENTER button,it can be used to stop,start or reverse the door.(⚠ if you want to exit right away,just press any other button on keypad.)

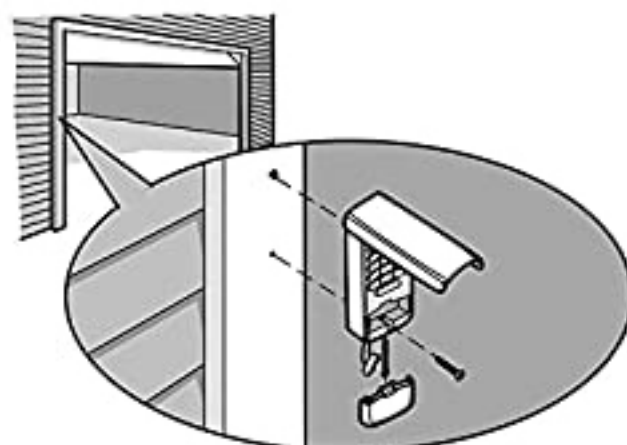


⚠ The Keypad of each type can program 2 different PIN for 2 different garage door openers.

⚠ To program the Keypad to more than one garage door opener,repeat the steps above using a new PIN and reprogram with each additional garage door opener.

INSTALLATION

- 1 Select a location to mount the Keyless Entry at a minimum height of 5 feet (1.5 m) out of the reach of children.
- 2 Remove battery cover.
- 3 Mark the top mounting hole and drill 1/8 inch (3.2 mm) pilot hole.
- 4 Install the top screw, allowing 1/8 inch (3.2 mm) to protrude above the surface. Position the Keyless Entry over the top screw.
- 5 Mark the bottom hole and drill 1/8 inch (3.2 mm) pilot hole. Install the bottom screw. Do not overtighten to avoid cracking the plastic housing.
- 6 Reinstall cover.



RESETTING THE KEYPAD (FACTORY DEFAULT) OR CHANGE AN EXISTING PIN

If the keypad has already been programmed or at any time the programming should be erased and started from the factory default, follow these steps.

- 1 Press and hold the * button.
- 2 Remove battery cover and 1 battery then reinstall battery.
- 3 beeps heard.indicating the keypad has been reset.
- 4 Start at above STEPS to program a new PIN and reprogram with garage door opener.

Trouble shooting

Why does the keypad not sync with garage door opener ?

Solution1: re-set a new 4 PIN code, then re-program keypad with garage door opener again refer to user manual.

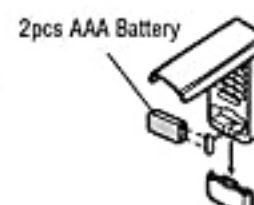
Solution2: the memory of your opener maybe full, press and hold the learn button on garage door opener several seconds until LED off then release,now all memory cleared, then re-program keypad with garage door opener again refer to user manual.

BATTERY

⚠ WARNING

To prevent possible SERIOUS INJURY or DEATH:
• NEVER allow small children near batteries.
• If battery is swallowed, immediately notify doctor.

Replace the battery when the keypad becomes dim or does not light after a button is pressed.
Dispose of old battery properly.



FCC Caution:

This device complies with part 15 of the FCC Rules. Operation is subject to the following two conditions: (1) This device may not cause harmful interference, and (2) this device must accept any interference received, including interference that may cause undesired operation.

Any Changes or modifications not expressly approved by the party responsible for compliance could void the user's authority to operate the equipment.

Note: This equipment has been tested and found to comply with the limits for a Class B digital device, pursuant to part 15 of the FCC Rules. These limits are designed to provide reasonable protection against harmful interference in a residential installation. This equipment generates uses and can radiate radio frequency energy and, if not installed and used in accordance with the instructions, may cause harmful interference to radio communications. However, there is no guarantee that interference will not occur in a particular installation. If this equipment does cause harmful interference to radio or television reception, which can be determined by turning the equipment off and on, the user is encouraged to try to correct the interference by one or more of the following measures:

- Reorient or relocate the receiving antenna.
- Increase the separation between the equipment and receiver.
- Connect the equipment into an outlet on a circuit different from that to which the receiver is connected.
- Consult the dealer or an experienced radio/TV technician for help.

The device has been evaluated to meet general RF exposure requirement. The device can be used in portable exposure condition without restriction.