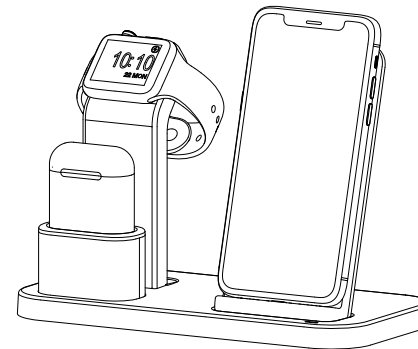


CONIDO

APST58 3in1 Stand with Wireless Charger

for Apple Watch (38mm/48mm)
& Apple iPhoneX/iPhone8/8Plus
& Apple Air Pods



Dear customer,

Thanks a million for purchasing our products, and we hope they can bring you pleasant usage experience.

In view of the continuous improvement of our products, the technical data herein shall subject to change without notice.

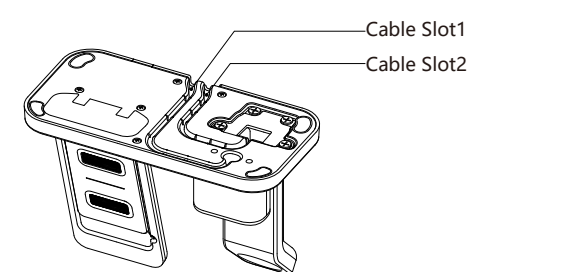
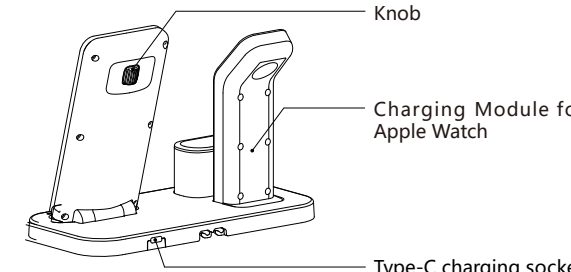
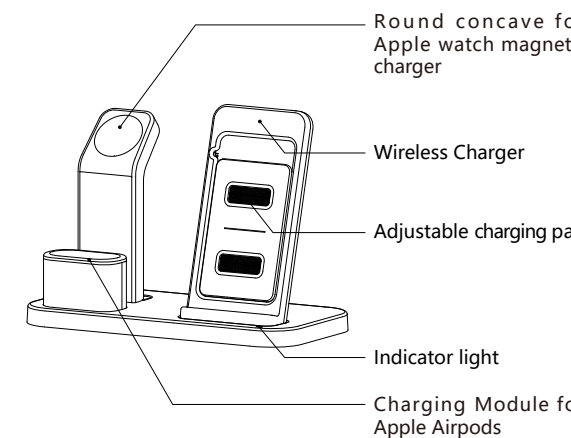
If you have any complaint or suggestion about our products, please do not hesitate to contact us via the email system of the purchasing website or the following email address. We will be very glad to answer your questions and advice.

Thank you again for your choice and your trust!

Wish you a happy shopping!

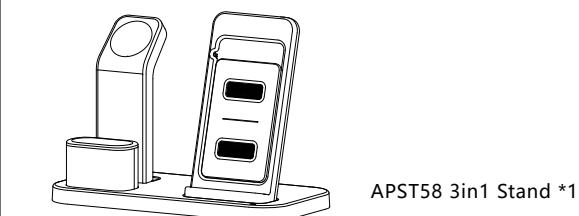
CONIDO

Conido@163.com

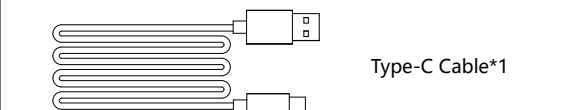


Parts List

Note: If the parts in the packing box don't check with the list, please contact us in time.



APST58 3in1 Stand *1

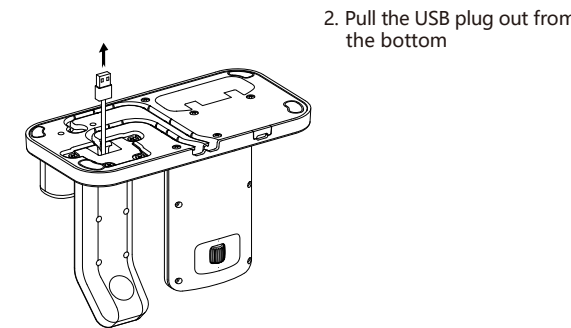
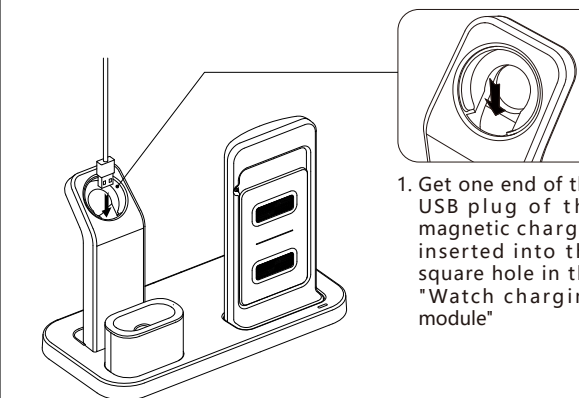


Type-C Cable*1

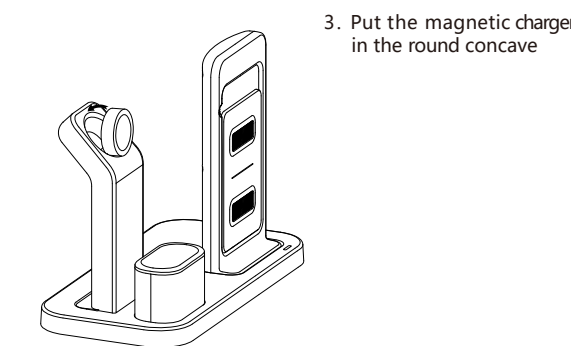


Cable Clip for Airpods Charging Module *1

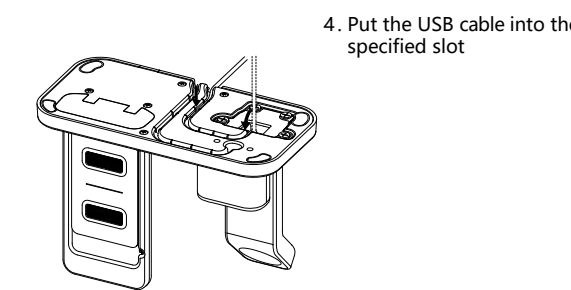
Step1 Erection of Watch Magnetic Charger



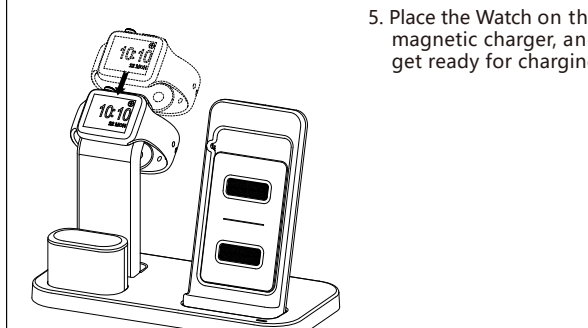
2. Pull the USB plug out from the bottom



3. Put the magnetic charger in the round concave

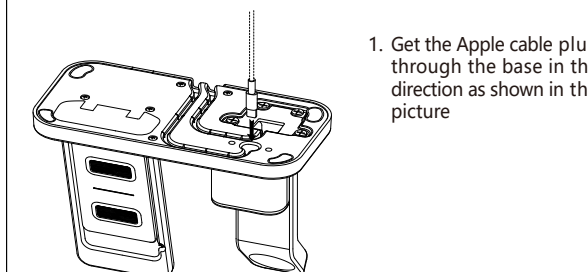


4. Put the USB cable into the specified slot

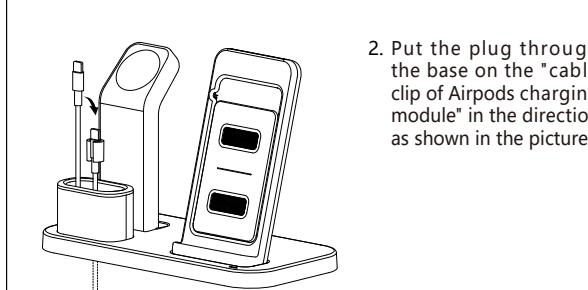


5. Place the Watch on the magnetic charger, and get ready for charging

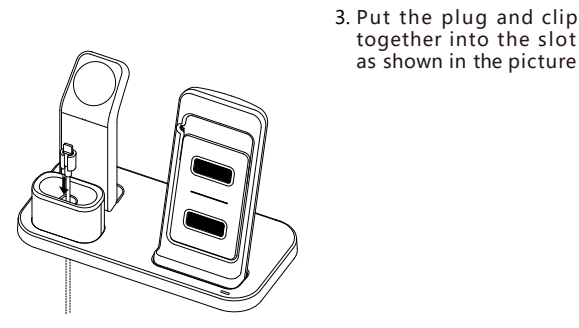
Step 2 Erection of Charging Cable for Airpods



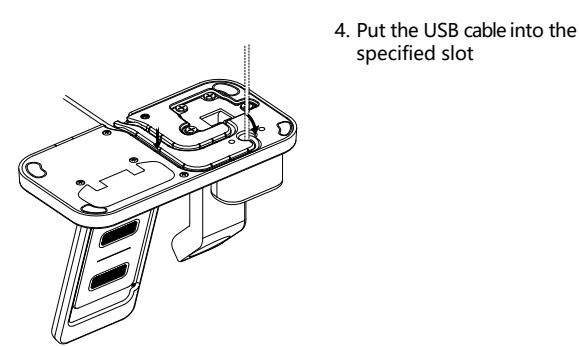
1. Get the Apple cable plug through the base in the direction as shown in the picture



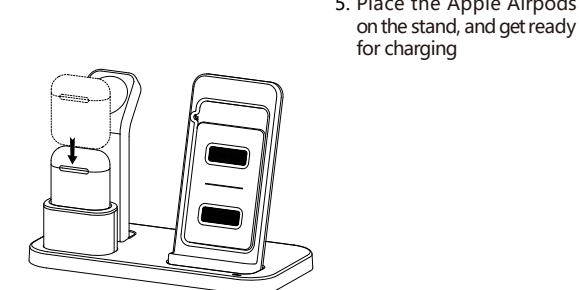
2. Put the plug through the base on the 'cable clip of Airpods charging module' in the direction as shown in the picture



3. Put the plug and clip together into the slot as shown in the picture



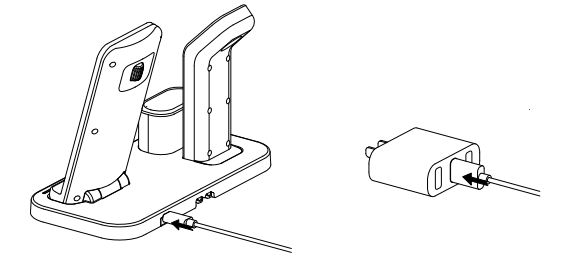
4. Put the USB cable into the specified slot



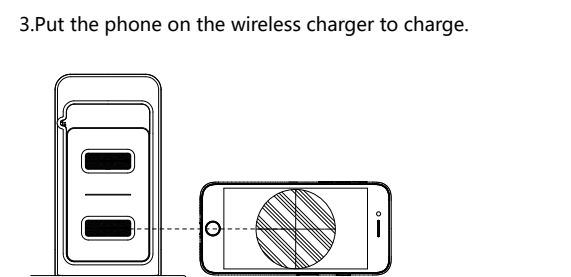
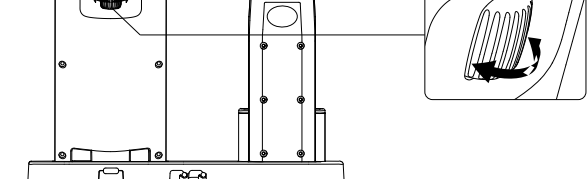
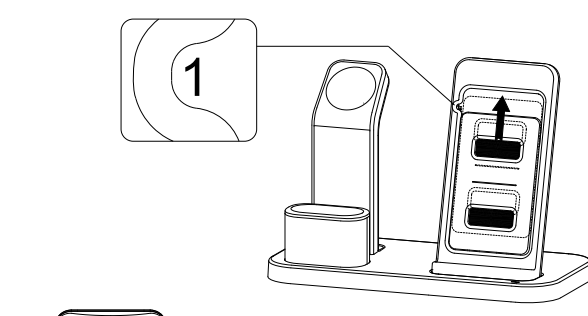
5. Place the Apple Airpods on the stand, and get ready for charging

Step 3 Use of Wireless Charger

1. Use the complimentary Type-C USB cable to connect the adapter (not included in this package; it's recommended to use QC2.0 Standard or above) and the product.



2. Adjust the height of the charging pad.

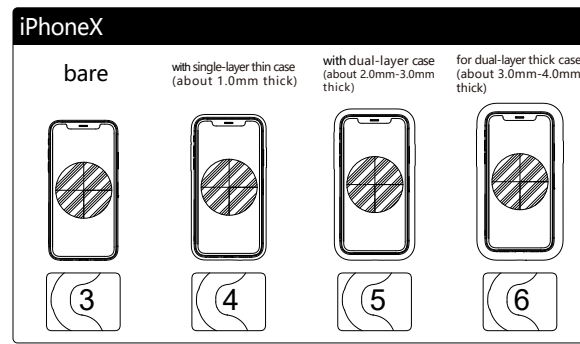
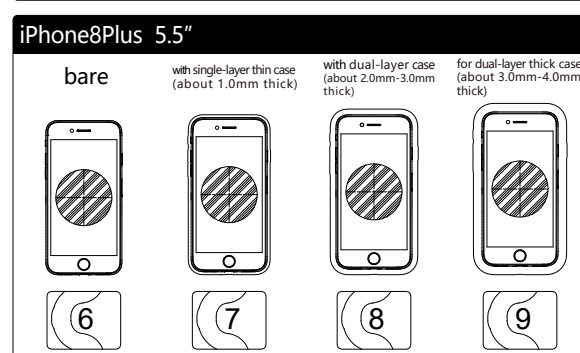
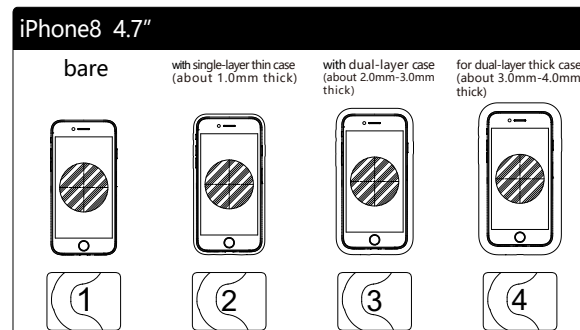


3. Put the phone on the wireless charger to charge.

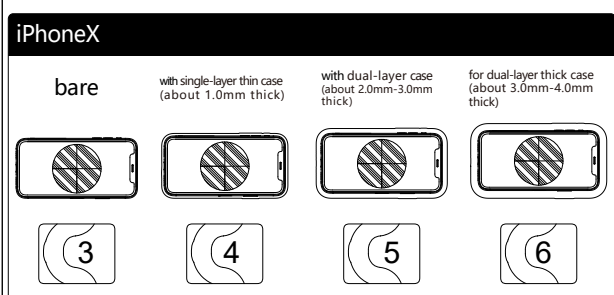
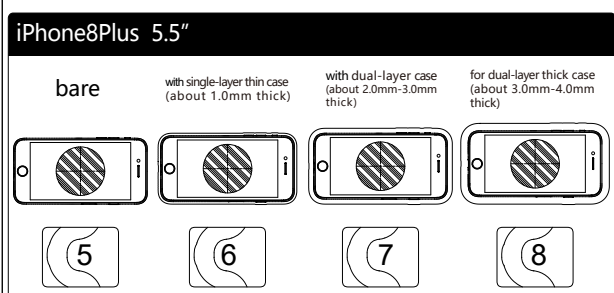
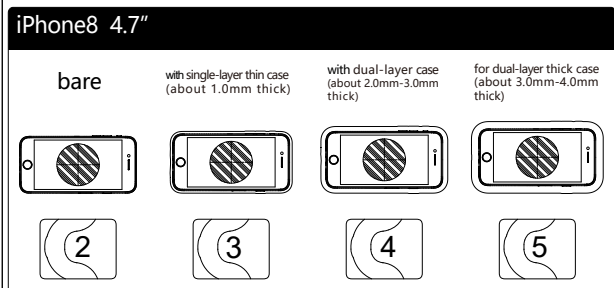
The charging pad shows number in its upper left corner to indicate the current position of the charging pad. Rotate the back adjustment knob, and the charging pad will move up and down to match the charging center point of different mobile phones.

There are two built-in receiving coils at the upper and lower sides of the charging pad. Whether the phone is placed vertically or horizontally, it's always able to match the coils of the phone and gets charged.

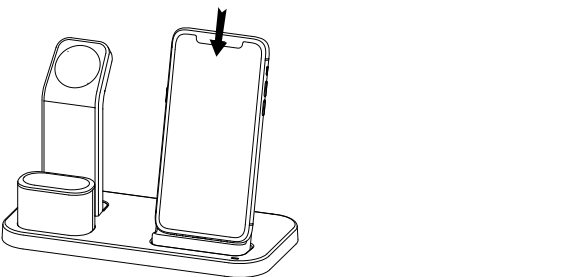
The following is the recommended height of the charging pad when the phone is placed vertically



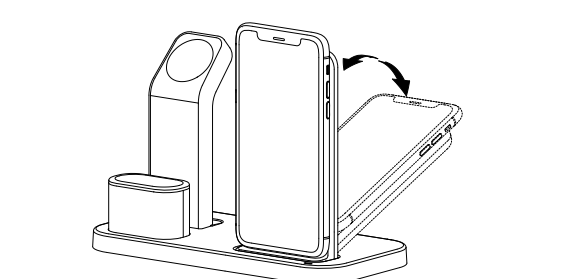
The following is the recommended height of the charging pad when the phone is placed horizontally



The charger works well with most mobile phones with wireless charging function on the market. But we can't test every mobile phones, and also due to the updated manual, we can't give more unnecessary details here, and please subject to the actual use.



After adjusting the height of the charging pad, put the phone to the the location as shown in the picture for charging



The phone charging module can swing back and forth and be quickly adjusted to your desired angle at any time

This product does not include an adapter. Please use an appropriate adapter to work with this product. It is recommended to use a power adapter that complies with the QC2.0 standard or above. This product is compatible with a 5V1A power adapter, but the charging rate may be slow because the adapter power is insufficient, but it does not affect its normal operation.

On indicator light:

In standby mode, the indicator is green. At this time, the device is normal, and you can charge the phone by placing it well. After the phone is placed, the blue light is normally on, which means the phone is being charged normally. When the green light flashes as an alarm, the device does not work

The reasons why the device doesn't work include:

1. Covered by something
The device will detect whether there is a metal object in the vicinity of the charging pad. If a metal object is detected, the device will power off and give an alarm with the green indicator light flashing. Even so, we still require that the charging pad area should not be covered by any metal objects, because this may heat the metal objects up and thus cause accidents.

2. Overhigh temperature
When some phones are being charged wirelessly, the temperature of the device and the phone may go up. Therefore, in order to protect the device itself and the phone that is being charged, when it becomes too hot the device will power off and give an alarm with the green indicator light flashing.

3. Overhigh voltage
When the adapter you are using is in overhigh input voltage, or your adapter fails, the device will power off and give an alarm with the green indicator light flashing.

4. Other reasons
If the device still does not work after the above reasons have been excluded, please check if your phone's wireless charging function is normal, reconnect your power adapter, and try it again. If the problem still cannot be solved, please contact us.

FCC Statement

This equipment has been tested and found to comply with the limits for a Class B digital device, pursuant to part 15 of the FCC rules. These limits are designed to provide reasonable protection against harmful interference in a residential installation. This equipment generates, uses and can radiate radio frequency energy and, if not installed and used in accordance with the instructions, may cause harmful interference to radio communications. However, there is no guarantee that interference will not occur in a particular installation. If this equipment does cause harmful interference to radio or television reception, which can be determined by turning the equipment off and on, the user is encouraged to try to correct the interference by one or more of the following measures:

- Reorient or relocate the receiving antenna.
 - Increase the separation between the equipment and receiver.
 - Connect the equipment into an outlet on a circuit different from that to which the receiver is connected.
 - Consult the dealer or an experienced radio/TV technician for help.
- To assure continued compliance, any changes or modifications not expressly approved by the party.

Responsible for compliance could void the user's authority to operate this equipment. (Example- use only shielded interface cables when connecting to computer or peripheral devices).

This equipment complies with Part 15 of the FCC Rules. Operation is subject to the following two conditions:

- (1) This device may not cause harmful interference, and
- (2) This device must accept any interference received, including interference that may cause undesired operation.