



Main Function

Default mold

Can use as default 15 colors change.

Color Tuning by using dedicated App

Can freely create lighting color

Memory mode

Can customize the lighting color types and order by selecting from the default 15 colors.
2 memory pattern can be saved. (+ default pattern)

Hot button

Can always jump to your favorite color

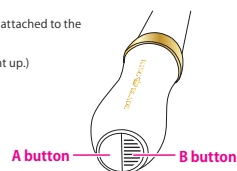
How to use the Default Mode (15 colors change)

- ON : press the A button for 0.5 seconds, (With the penlight OFF, press and hold the A button, the first color will light up.)
- OFF : press and hold the A button for 1.5 seconds.
- Color change : press the A button once, color will change forward
press the B button once, color will change backward

Color change order :

1.RED→2.BLUE→3.WHITE→4.ORANGE→5.GREEN→6.PURPLE→7.PINK→8.YELLOW→9.LIGHT GREEN
→10.LIGHT BLUE→11.LIGHT PINK→12.VIOLET→13.LIME→14.TURQUOISE→15.HOT PINK

Pull to remove the plastic tab attached to the battery compartment



Setting for Memory Function (color types and order)

Memory A

1. With the penlight off, press and hold the B button for 3 seconds until the RED color flashes slowly.
 2. Press the A button to change the color sequentially. Change to the color you want and then press B button to select. The selected color will be flashing fast.
 3. After selecting all the colors, you must press and hold the B button until it turns off to save the memory.
- You can select a specific order of colors. (Maximum memorable number of colors: 30)
- ※The switch ON/OFF is the same as default function after the memory function is set.
- ※After selecting the 30th color, the penlight will turn off and the color order will be saved automatically.

Memory B

1. With the penlight off, press and hold both the A and B button for 3 seconds until the BLUE color flashes slowly.
2. Same as memory A setting 2~3.

Selecting for Memory Pattern

After memory A and memory B have been saved,
1)default, 2)memory A, 3)memory B can be select and switch to use.

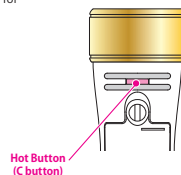
- (1) With the penlight off, press and hold the B button for 3 seconds until the RED color flashes slowly.
 - (2) Press C to select the memory pattern
select red color for memory A
select blue color for memory B
select white color for default mode
 - (3) After select either RED/BLUE/WHITE, press and hold B button for 3 seconds until it turns off to save the setting.
- ※The switch ON/OFF and color change is the same as default function after the memory function is set.

Resetting for Memory

- (1) With the penlight off, press and hold the B button for 3 seconds until the RED color flashes slowly.
 - (2) Press C for selecting the memory pattern to delete
select red color for resetting memory A
select blue color for resetting memory B
 - (3) Press and hold the A button for 3 seconds until the penlight turns off. The color order will be back to default setting.
- ※Even replaced the battery,
the memory function setting is retained
- ※default mode (15 colors change) cannot be delete.

How to use the Hot Button

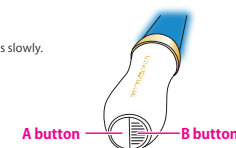
1. Light up the favorite color, press and hold C button for 3 seconds, the penlight will flash once then setting have been saved.
2. While either one of the color is lighting, press C button then will jump to the favorite color.
3. While the favorite color is lighting up, press A or B button, the color will back to the color before pressing C button



How to color tuning

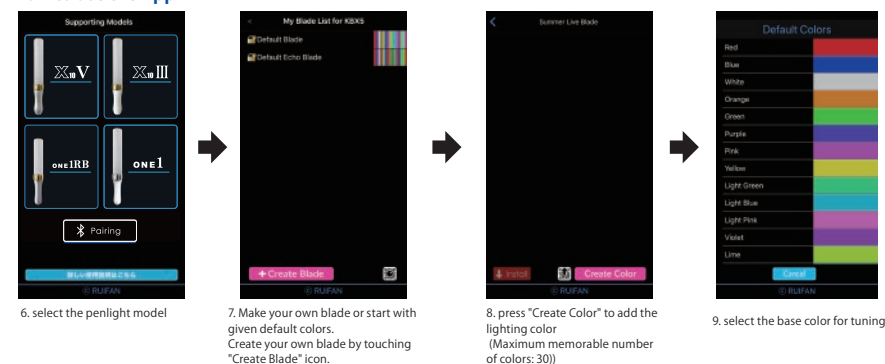
Connect to the penlight

1. Turn on the Bluetooth function from the device.
 2. With the penlight off, press and hold both the A & B button for 3 seconds until the BLUE color flashes slowly. The penlight became tuning mode.
 3. start up the App, touch "pairing" icon
 4. select "KBX5"
 5. The lighting color will be flashing fast. Pairing succeeded.
- ※Pairing requested at the first time only.



How to use the App

App design might be modified



6. select the penlight model

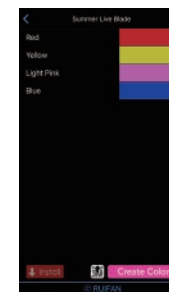
7. Make your own blade or start with given default colors.
Create your own blade by touching "Create Blade" icon.

8. press "Create Color" to add the lighting color
(Maximum memorable number of colors: 30)

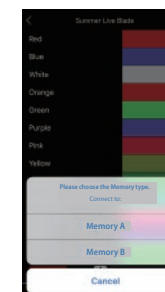
9. select the base color for tuning



10. Control the red, green, blue, white color bar to adjust the RGBW value then touch "Select"
Right side, there is a power consumption indicator which can give you a hint of battery duration of the current color.



11. touch "install" after finish color tuning



12. Select the memory type for saving. The penlight will light up all colors then installed finished.

FCC Statement

This device complies with part 15 of the FCC Rules. Operation is subject to the following two conditions:

- (1) This device may not cause harmful interference, and
- (2) this device must accept any interference received, including interference that may cause undesired operation.

Any changes or modifications (including the antennas) to this device that are not expressly approved by the manufacturer may void the user's authority to operate the equipment.

FCC RF Radiation Exposure Statement:

This equipment complies with FCC RF Radiation exposure limits set forth for an uncontrolled environment.
This device and its antenna must not be co-located or operating in conjunction with any other antenna or transmitter.