



Becton Dickinson and Company
200 Bulfinch Drive
Suite 100
Andover, MA 01810, USA

IDD(328623) Internal photographs

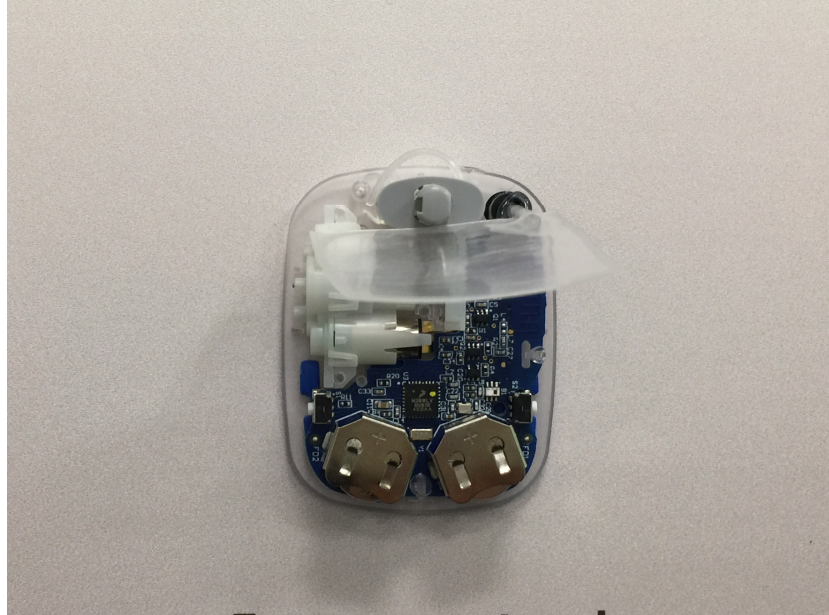


Figure 1 : IDD with Top enclosure removed



Figure 2: TOP enclosure, Integrated subassembly and reservoir bag



Figure 3: Integrated subassembly without PCBA (grey Insertion Mechanism, Baseplate, Pump and Motor)

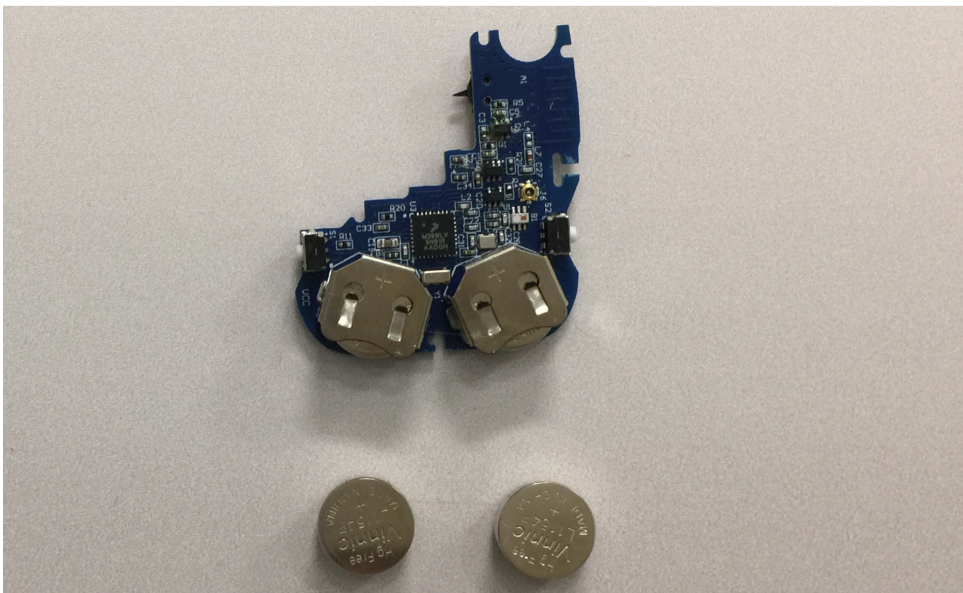


Figure 4: PCBA with LR44 batteries

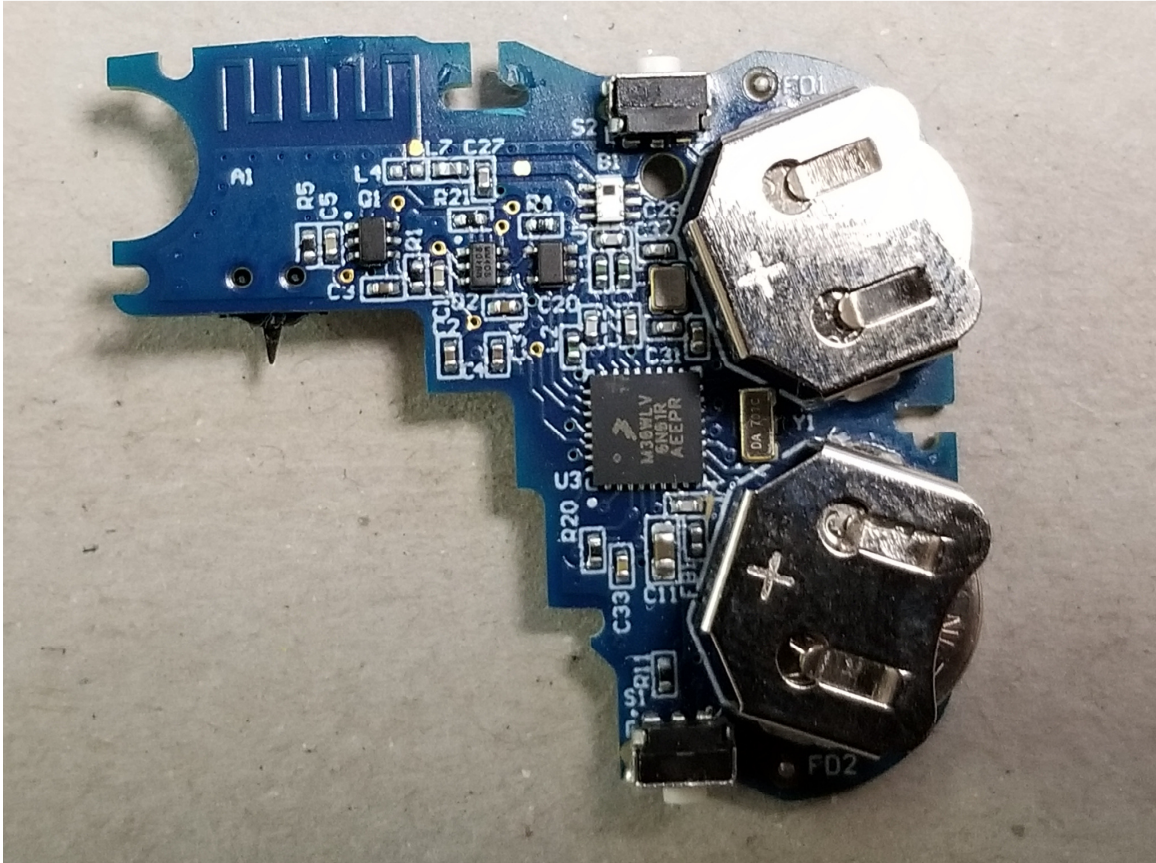


Figure 5: PCBA –Top view (refer figure 7 below as well) (RF circuit located near component B1 and Antenna as component A1)

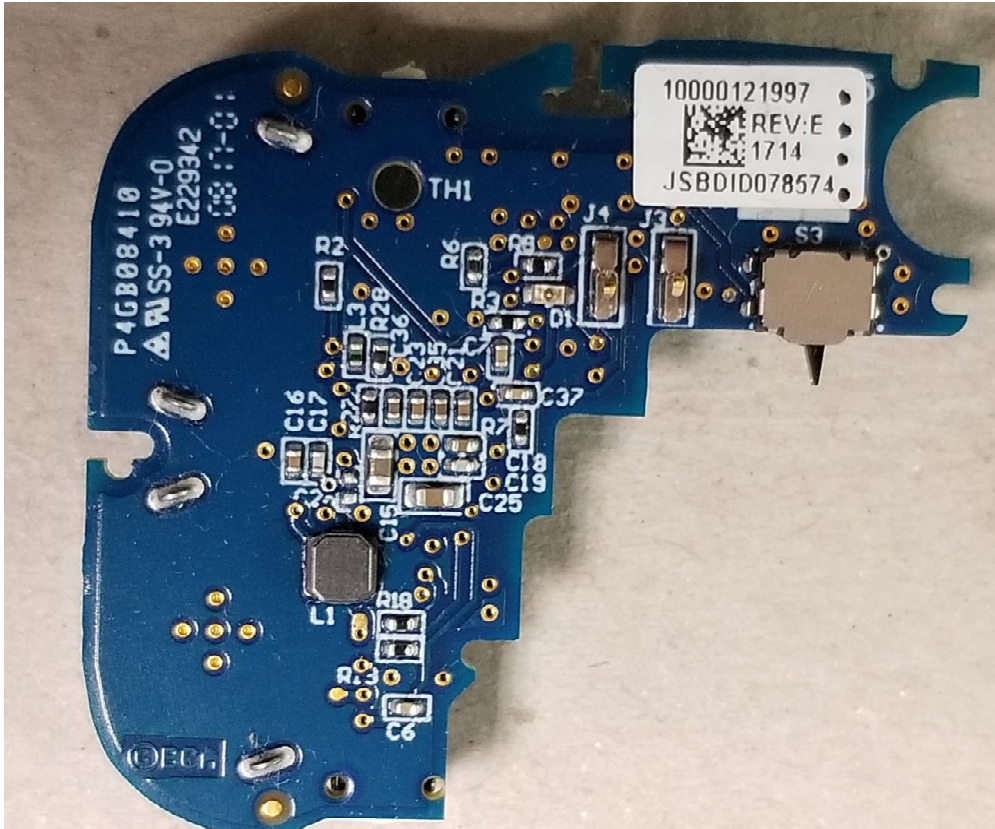


Figure 6: PCBA- Bottom View

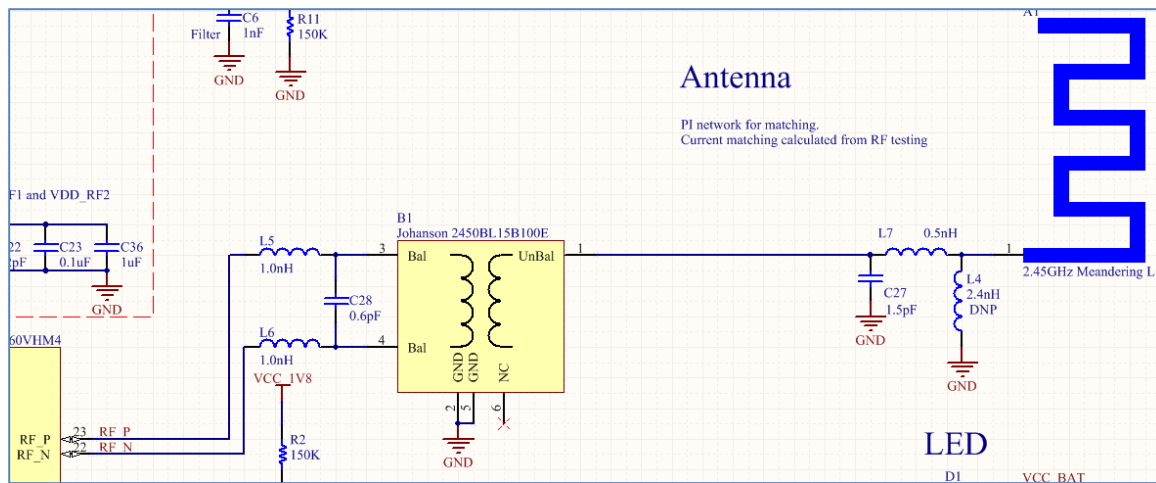


Figure 7: IDD RF Circuit with Antenna

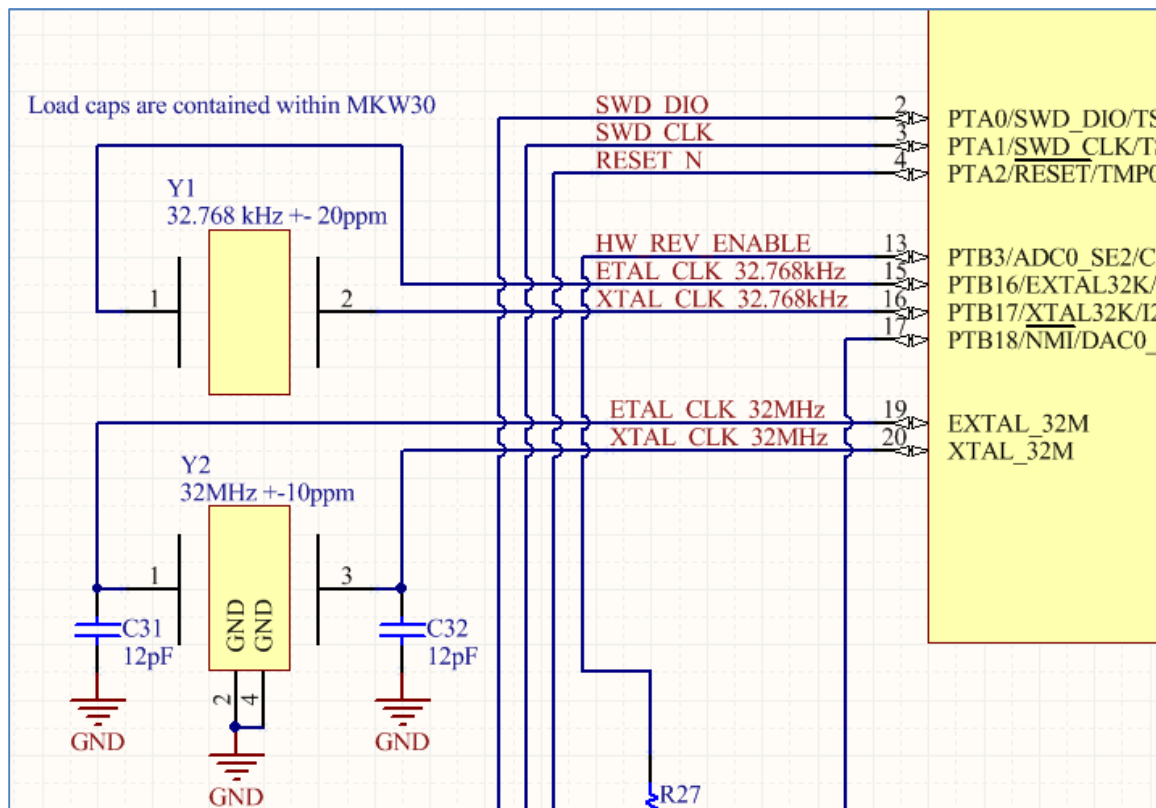


Figure 8: IDD Clock