

D520 Panoramic Driving Recorder

Model:D520

Introduction:

This is D520 Panoramic Driving Recorder with Wi-Fi connection to mobile phone features. It is actually a professional high definition Car DVR, compare to the traditional front and rear Car DVR. This product using a 360 degree lens to provide panoramic video recording.

This Instruction manual illustrating the details of features, operations, product specifications and special notes. For ensuring the proper use of our product, please carefully read this manual. This manual not only text but also using pictures to show the operations details.

Main Content:

1.0. ProductOutlookDiagram	
2.0. Installation and Operation description.....	
3.0. Wi-Fi and App connection description	
4.0. Wi-FiSettingdescription	
5.0. Keyoperationsdescription	
6.0. Productspecifications	
7.0. Problemsolving	

1.0. Product OutlookDiagram:

USBPower interface



2.Installation and OperationDescription:

Installation Description:

- 2.0. Turn off carengine.
- 2.1. Insert the TF card into the recorder card slot.
- 2.2. Connect the power cable to the main power interface of thecar.
- 2.3. Find the most suitable position to install the product in the car front glass, make sure the lens is point to the downward position and the screen stay in the Divide By Two display mode. Confirm that the upper part of the screenshowing the outside front view of the car, while the lower part showing the out side view of the car left and right windows and also the inside carview.
- 2.4. After positioning the product at the front glass, clean up the glass and tear off the cover paper from the sticker in the base holder, Stick the base holder tothe glass and then slowly slide the product from right to left until itcompletely fit into the base holder.
- 2.5. Again adjust your 360 degree lens to the downward position and switchyour screen display to 360 Divide By Twomode.

Installationdiagram:



Complete installationdiagram:



- 2.6. Turn on the car engine, check and make sure your product is workingproperly.

Operation Description:

- 2.7. The default mode of the product is 360 Divide By Two mode, turn the 360 degree lens to downward position, the front view, left and right and inside car view will all be recorded in the video file.

2.8. Change to 220 Wide Angel (Car DVR)

mode, twist the lens to the forward position, only the front with 220 degree wide angel view will be recorded in the video file.

3.0. Connecting Mobile phone Wi-Fi and App:

Before building the Wi-Fi connection with the mobile device, please firstly install the OTCam360 App in your target mobile device.

3.1. Android phone:

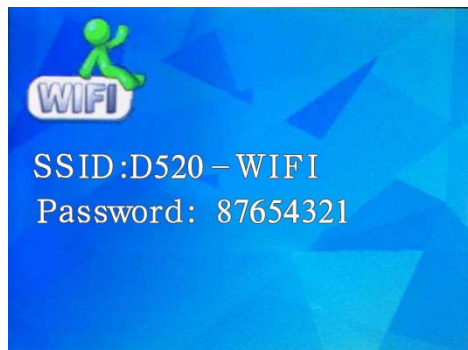
For Android mobile device, please. Go to Android Market or 360 Mobile Assistant search the “OTCam360” to download and install APP

3.2. IOS Mobile device:

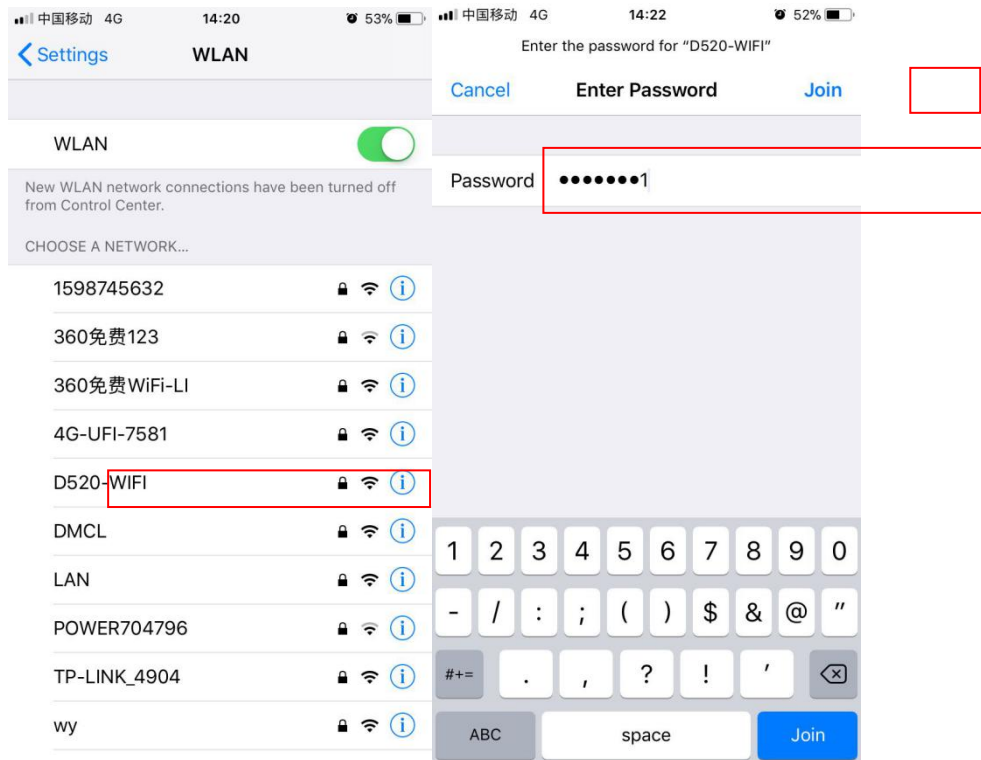
Please search the “OTCam360” App in the Apple Store, download and install accordingly.

4.0. Wi-Fi Connection Description:

- 4.1. After turn on the product power, click [ok] key to stop recording, and then press and hold the [Down] key for more than 2 seconds, the screen will show the Wi-Fi SSID and Password as below picture:

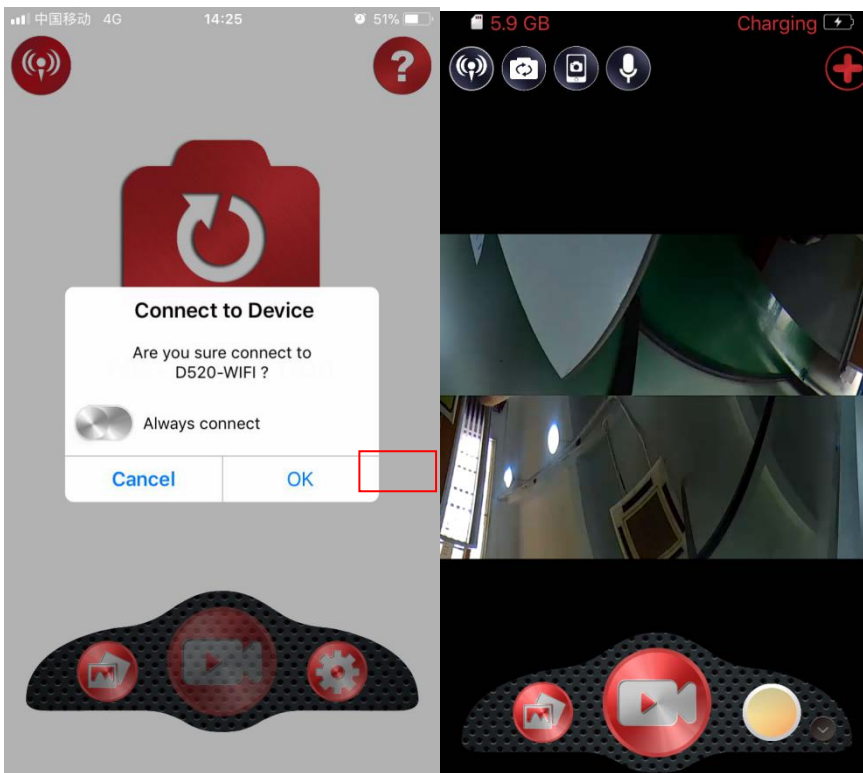


- 4.2. Enter the Wi-Fi setting of your mobile phone devices, search the Wi-Fi username “D520-WIFI” as picture 1, enter the Password “87654321” as picture 2 and confirm the success of connection with mobile device. as picture:



Picture 1 Picture 2





4.3. After mobile phone direct connect this WI-FI successfully. open the “OTCam360” APP to click “Ok” in picture 3 to connect device, The “OTCam360” will automatically enter preview interface as picture 4. and the device will show a small Wi-Fi icon. It represent the product is now connected with your mobile device. In this case, can enter the operate interface

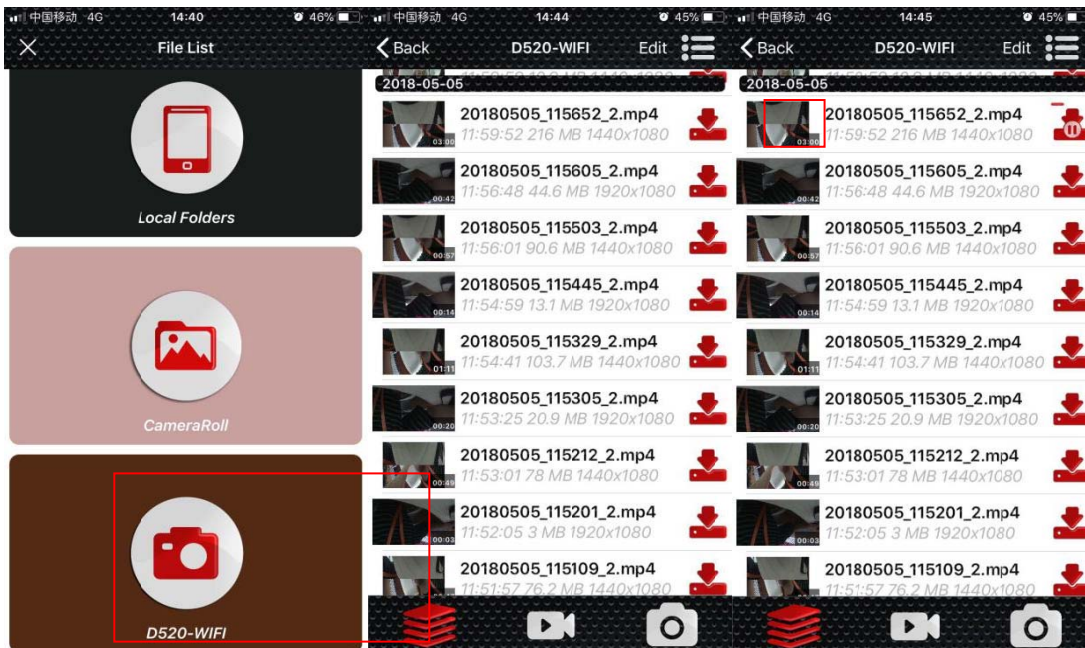


Picture 3

Picture 4

4.4. Documentpreview:

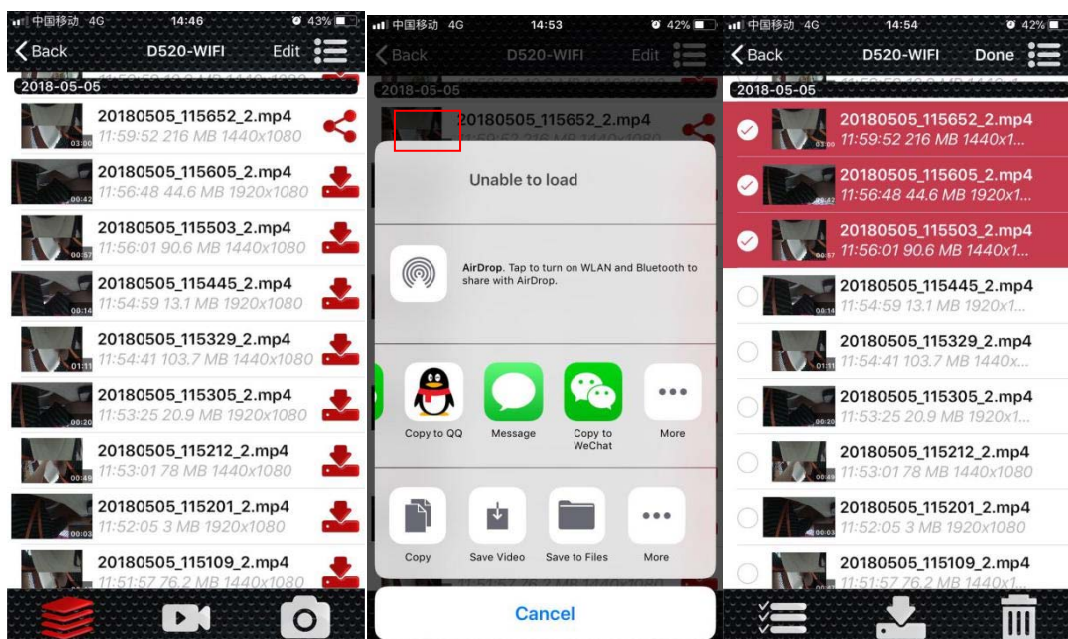
In the App Preview Display status, click the icon  to enter the Playback Mode. Playback mode can be directly click on the folder “D520 - WI-FI” and then click the corresponding file to play online, or click on the right icon  of the selected video file in the folder to download as picture 5 , The downloaded video file can be played or shared online on the mobile phone. Click on the icon  of the video file to be shared on the platform as picture 8, or click “edit” select you don’t want to save and then click this icon  to delete it as picture 10:



Picture 5

Picture 6

Picture 7



Picture 8

Picture 9

Picture10

5.0. Key FunctionDescription:

5.1. The UPkey:

- Forward Screenpage:

Forward moving the screen page in the Manual Setting and Video Playback Mode.

5.2. The DOWNkey:

- Backward Screenpage:

Backward moving the screen page in the Manual Setting and Video Playback mode.

- AudioMuting:

Press the key once to disable the audio sound recording during the video recording mode.

- Enable Wi-Fi feature:

Press and hold the key for more than 2 seconds during process the video recording to enable the Wi-Fi feature.

5.3. The M (Manual)key:

- ManualSetting:

During the Standby status, short press of the [M] key to enter Manual Setting Mode and show the Main Manual Function Setting List. Press of the UP or DOWN key to select the target item, then press of the [OK] key to confirm the selection. Finish the setting by press of the [M] key until exit of the Manual Setting Mode. (Use of the above procedure to set the manual in Video Recording and Photo Capturing mode).

- ModeCycling:

In the Standby Status, press and the hold the [M] key for more than 2 seconds to cycle between the Video Recording, Photo Capturing and Video Playback modes.

- Emergency FileLocking:

During recording the video file, press [M] key to activate the File Emergency Lock feature. The upper right screen will show the LOCK icon and the present video file will be lock and keep as a Emergency file. It will never be delete until the file is unlock.

5.4. Power / OKkey:

- Power On /Off:

During the power off status, press and hold the [Power] key for more than 3 seconds to turn on the device power and start system running. During power on status, press and hold the [Power] key for more than 3 seconds, the device will automatically store the existing video files and user settings than turn off the power and enter into the Power Off mode.

- Start / Stop VideoRecording:

In the video recording mode, press of the [OK] key to toggle between the start and stop of the video recording feature.

- PhotoCapturing:

In the Photo Capturing mode, press of the [OK] key to capture one single photo.

- Video fileplayback:

In the video file preview mode, press of the [OK] key to start the video playback feature.

- Feature confirmkey:

In the Video Recording/Photo Capture/Playback modes, short press of the [M] key to enter the Manual Setting Mode, short press of the [UP]/[DOWN] key to select item and press of [OK] key to confirm the selected item.

5.5. ResetKey:

In case of dead loop of the product happened, press of the [Reset] key inside the Reset hole to reset the product.

Note: This key normally use when the product is dead loop for whatever reason, not need to use if dead loop is not happened.

6.0. Basic operation and featuredescription:

6.1. Video RecordingMode:

After power up, the device will activate the Video Recording automatically, the display is default as 360 Divide By Two mode. Make sure the lens is pointed to the downward position. If need to select other settings, press of the [M] key to enter the manual setting mode.Or manually adjust the lens direction.

6.2. Lensdirection:

- 360 Divide By Two (Surveillance) mode: Lens need to point to the downside.
- 220 Wide Angle(CarDVR)modes: Lens need to point to the frontside.

6.3. Photo CapturingMode:

Afterpowerupandstartvideorecording,shortpressofthe[OK]keytostopvideorecording,long press of the [M] key to switch to the Photo Capturing Mode. The upper screen will show the Camera icon stead of the Recorder icon. In this case, short press of the [OK] key can start capturing photo. Or long press of the [M] key twice to return to the Video Recordingstatus.

6.3. Playbackmode:

After power on and enter start the Video Recording, short press of the [OK] key to stop video recording, long press of the [M] key twice to switch to the Video Playback Mode. Short press of the [UP] or [DOWN] key to search the file for playback. Short press of the [OK] key to confirm playback of the selected file. Switch back to Video Playback just short press of the [M] key once.

6.4. ManualSetting:

DuringthestandbystateoftheVideorecording,PhotoCapturingandVideoPlaybackmodes, short press of the [M] key to enter into the Manual Setting Mode and the screen will show the Manual List forselection.

Press of the [UP] or [DOWN] key to select the items. Press of the [OK] key to confirm the selected item. Or short press of the [M] key to exit the Manual Setting mode.

6.5. TimeSetting:

Short press of the [M] key to enter into the Manual Setting Mode, select of the Date Setting item, shortpressofthe[OK]keytoenterthedatesettingmode.Shortpressthe[OK]keyagaintoselect between the Year/Month/Date/Minute/Second items. Use the [UP] or [DOWN] key to adjust the necessary value. Short press of the [OK] key to confirm the setting and exit the Date Setting Mode.

Note: To record the correct date and time for the Car DVR purpose, please set the correct and accurate date and time value before using this Car DVR product.

6.6. File Security Lockfunction:

This product has the one key File Security Lock function, it is using for protecting the necessary video file from being erase by the file cycling system. During the video recording processing and if accident happened, short press of the [M] key to Lock and protect the existing file, it will then automatically save into the file folder named “EVEN” and will not be erase by the file cycling system.

6.7. G-SensorFeature:

Thisproductbuild-intheG-Sensorinside,itcanbeusefordetectingtheaccidenthappenandlock thepresentrecordedvideofileintoaspecialfilefoldernamed“EVEN”.Itwillnotbeerasebythe file cycling systemanymore.

7.0.Product Specifications:

Hardware Specification:	
LCD display	2.5 Inches IPS high definition panel
Pixel	500 Mega Pixel
Lens Angle	220 degree
Video file format	MP4
Photo file format	JPEG
Microphone	Build-in
Speaker	Build-in
Operation voltage	DC 5V power supply by power cable
Memory	Support 8GB~32GB TF card, Class 10
USB	Mini USB2.0
Operation Temperature (°C)	(-20°C---+60°C)
Features:	
Language Support:	Simplify Chinese/Traditional Chinese/English (Default)
Seamless recycling video recording	Support
G-Sensor	Support
File Security Lock	Support
Audio recording	Support
Video compression	H.264
WIFI	Support (802.11b/g/n)
APP	OTCam360(Android/iOS)

Note: The manufacturer retain the right for any modification on ID, features and hardwares without prior notice.

8.0. Product Failure Handling:

Normal Product Failure Solving Note:

Bellowing are part of the problem solving solution subject to the normal product operation condition:

Power up failure	May due to the wrong connection of the ACC line
Devicepoweroffwhenturnof the car power supply.	May duo to the reverse connection of the ACC and BAT lines.
Can't activate video recording or reducing recording frame rate.	1. Make sure the TF card has been format beforeuse. 2. Make sure using of the Class 10 or above high speed TFcard.
App screen not smoothingor not enough file down loading speed.	1. Cleanupyourmobilephonetosavemorememoryspace. 2. Too many Wi-Fi users in the area, change thelocation. 3. TurnoffyourBluetoothfunction,itmayaffecttheWi-Fioperation.

9.0.FCC Statement

This device complies with Part 15 of the FCC rules. Operation is subject to the following two conditions: 1) this device may not cause harmful interference, and 2) this device must accept any interference received, including interference that may cause undesired operation.

Note: This equipment has been tested and found to comply with the limits for a Class B digital device, pursuant to part 15 of the FCC Rules. These limits are designed to provide reasonable protection against harmful interference in a residential installation.

This equipment generates uses and can radiate radio frequency energy and, if not installed and used in accordance with the instructions, may cause harmful interference to radio communications. However, there is no guarantee that interference will not occur in particular installation. If this equipment does cause harmful interference to radio or television reception, which can be determined by turning the equipment off and on, the user is encouraged to try to correct the interference by one or more of the following measures:

- Reorient or relocate the receiving antenna.
- Increase the separation between the equipment and receiver.
- Connect the equipment into an outlet on a circuit different from that to which the receiver is connected.
- Consult the dealer or an experienced radio/TV technician for help.

Changes or modifications not expressly approved by the party responsible for compliance could void the user's authority to operate the equipment.

FCC Radiation Exposure Statement

This device complies with FCC RF radiation exposure limits set forth for an uncontrolled environment. This transmitter must not be co-located or operating in conjunction with any other antenna or transmitter.

This device must operate with a minimum distance of 20 cm between the radiator and user body.