

# QUICK START GUIDE

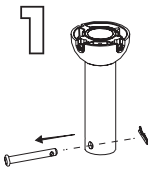
MODEL: 27109-U\*



## BEFORE YOU BEGIN INSTALLING THE FAN

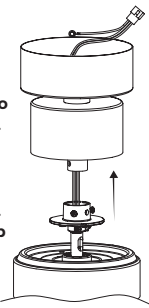
These instructions are for a display model only. See complete owner's manual for detailed instructions for installing a complete fan.

1



Remove the locking pin and the hanging pin from the downrod.

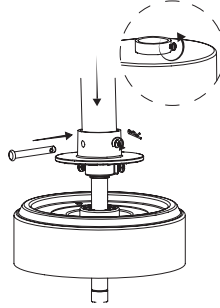
Slide the canopy and the canopy ring, both facing upwards, onto the downrod. Slide the decorative cover onto the downrod. Feed wires up through the downrod as shown.



**FEED WIRES THROUGH DOWNROD, CANOPY AND COVER**

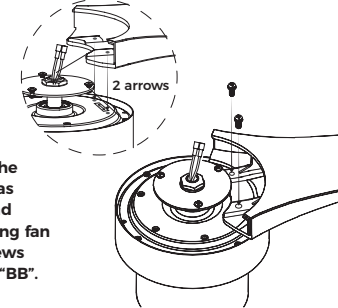
2

Insert the downrod into the motor housing. Align the holes and insert the hanging pin and the locking pin. Tighten the set screws. Slide the decorative cover down and tighten the 2 screws.



**INSERT DOWNROD INTO THE MOTOR HOUSING**

3

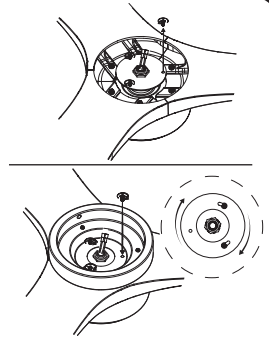


Line up blade to the 2 arrows, as shown, and attach using fan blade screws from bag "BB".

**ATTACH THE BLADES**

4

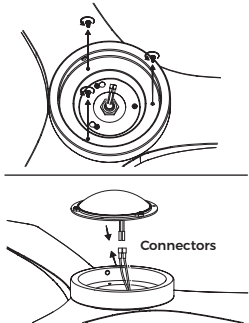
Loosen (any) 2 pre-installed screws and remove the third screw. Attach the light plate by lining up the 2 keyholes with the 2 screws then twist until tight. Reinsert the third screw and tighten all 3 screws.



**ATTACH THE LIGHT PLATE**

5

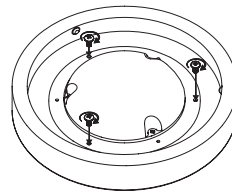
Remove the 3 pre-installed screws from the light plate. Connect the wires from the LED light module to the wires from the light plate.



**CONNECT THE LED LIGHT MODULE**

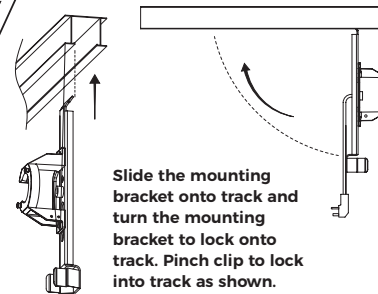
6

Align screw holes from LED module to the light plate and screw in all 3 screws ensuring they are tight



**ATTACH THE LED LIGHT MODULE**

7

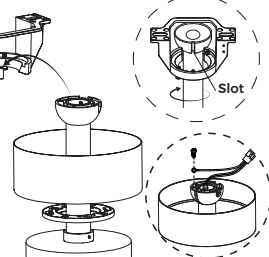


Slide the mounting bracket onto track and turn the mounting bracket to lock onto track. Pinch clip to lock into track as shown.

**SECURE THE MOUNTING BRACKET TO THE DISPLAY**

8

Lift the assembled fan into the bracket. Rotate the fan until the groove on the hanger ball drops into the slot. Note: For safety purposes, install the ground wire onto the hanger ball with the screw.

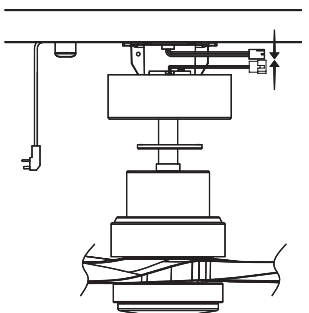


**ENSURE TAB IS SEATED IN A SLOT IN THE HANGER BALL.**

**HANG THE FAN ON THE MOUNTING BRACKET**

9

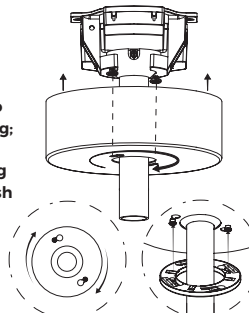
Connect the wire from the ceiling fan to the wire from the mounting bracket.



**WIRE THE FAN**

10

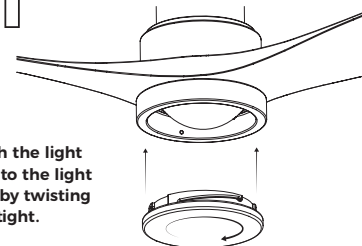
Attach the canopy by aligning screws to keyholes and twisting; then tighten screws. Align the canopy ring with canopy and push up the canopy ring until the screws heads engage in the slots; then rotate until tight.



**ATTACH THE CANOPY TO THE MOUNTING BRACKET**

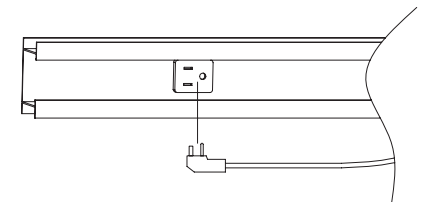
11

Attach the light cover to the light plate by twisting until tight.



**ATTACH THE GLASS LIGHT COVER TO THE LIGHT PLATE**

12



**PLUG IN FAN TO OUTLET**