

QM-133BD

User's Manual

Version 1.0
Feb 24, 2022

Legal Notice

Copyright ©2022 Quixant plc

All information contained in this document is proprietary and confidential to Quixant plc and is subject to a non-disclosure agreement. Unauthorized use, duplication, modification or disclosure of this information by any means without prior consent of Quixant plc is prohibited.

Every effort has been made to ensure the accuracy of this document; however, Quixant plc accepts no responsibility for any inaccuracies, errors or omissions herein. Quixant plc reserves the right to change specifications without prior notice in its absolute discretion, to supply the best product possible. Where Quixant plc or any of its group companies has (i) made a change to a product to incorporate a specific customer requirement or (ii) has created a design to a customer's specific requirements, in either case the customer will indemnify and hold the relevant Quixant entity harmless against any claim that delivery against such requirement breaches any intellectual property or other rights of any 3rd party.

All brands and trademarks are the property of their respective owners and are hereby fully acknowledged.

Revision History

VERSION	DATE	DESCRIPTION	AUTHOR
1.0	Feb 24, 2022	First edition	Carole Wu

Table of Contents

1. INTRODUCTION	4
1.1 Appearance	4
1.2 Safety Instruction	4
1.3 RF Instruction	4
2. SPECIFICATION	5
3. EXTERNAL I/O & OSD FUNCTION KEY	6
3.1 Input/Output	7
4. MOUNTING DESIGN	7
5. QM-133BD OSD MENU	8
5.1 OSD Menu	8
5.2 OSD Default Setting	9
6. TOUCH FUNCTION INSTALLATION	10
7. WIRELESS CHARGER FUNCTION	10

1. Introduction

QM-133BD Includes 2 bonding types with touch panels, air and optical bonding. It's beneficial to slot machine designer to adapt, depending on customer request. Here's showing drawing for mechanical type and the photo of touch with smash hole.

1.1 Appearance



1.2 Safety Instruction

Strictly follow these Instructions for Use, please read these safety instructions carefully.

Remind to keep this User's Manual for later reference, and any use of the product requires full understanding and strict observation of all portions of these instructions.

Repair of the device may also only be carried out by trained service personnel. Quixant Plc recommends that a service contract be obtained with Quixant Service and that all repairs also be carried out by them. Otherwise, the correct functioning of the device may be compromised.

1.3 RF Instruction

This device complies with Part 15 of the FCC Rules. Operation is subject to the following two conditions: (1) this device may not cause harmful interference, and (2) this device must accept any interference received, including interference that may cause undesired operation.

- Any changes or modifications not expressly approved by the party responsible for compliance could void the authority to operate equipment.
- This device and its antenna must not be co-located or operating in conjunction with any other antenna or transmitter.

RF Radiation Exposure Statement:

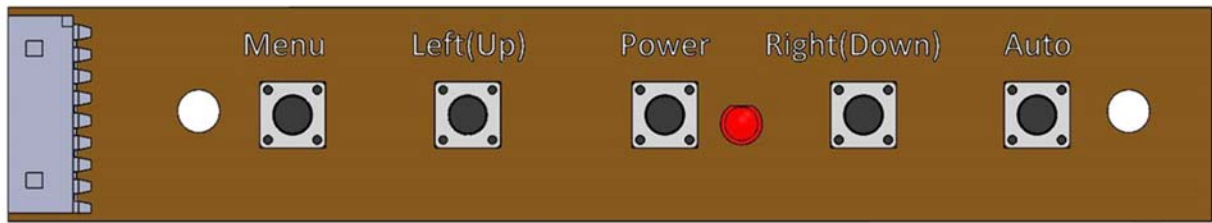
This equipment complies with FCC radiation exposure limits set forth for an uncontrolled environment. This equipment should be installed and operated with minimum distance 20cm between the radiator & your body.

2. Specification

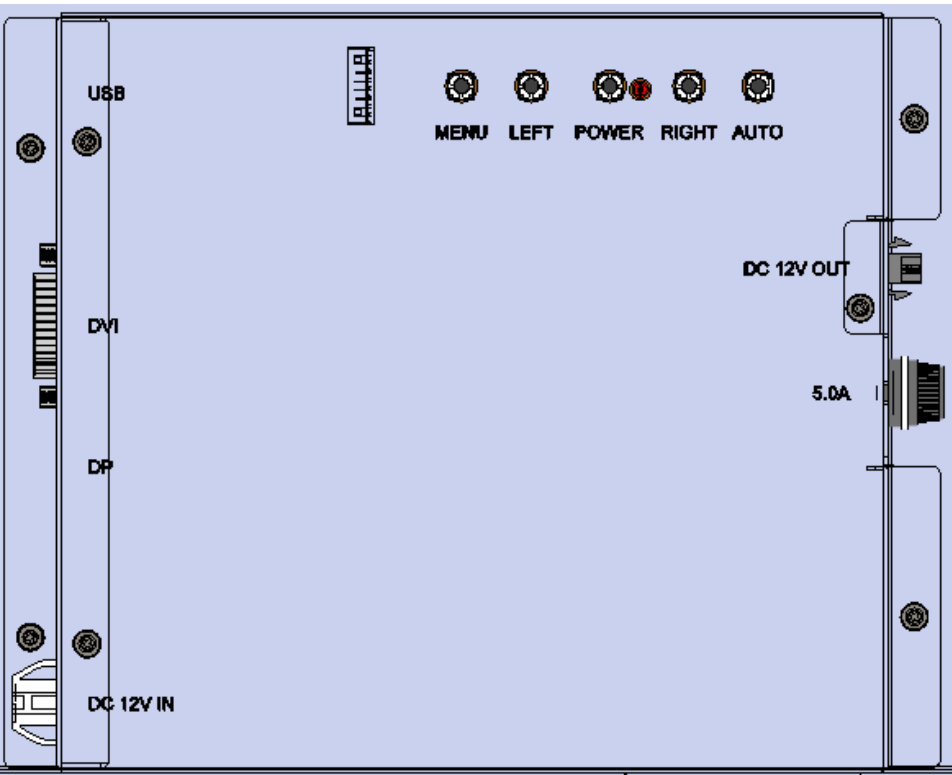
LCD	Size	13.3" LCD wide view angle panel
	Resolutions	1920x1080
	Display Colors	16.7M
	Brightness/Backlight	400 cd/m2 LED Backlight (270 cd/m2 Min.)
	View Angel	178°/178° degree
	Contrast Ration	800:1 (600:1 Min. with panel native color temp.; 450:1 with 6500K)
Touch Panel	Touch Type	PCT Touch
	Touch point	Multi-touch
	Interface	USB Type B
	OS Support	Win7 (HID supported)
System	I/O	1x DVI-D port, 1x DP port, 1x USB Type B, 1x Micro-Fit (for wireless charger power input connector), 1x DC In
	OSD	Power, Menu, Auto Adjustment, left(up)/right(down)
	Wireless Charger (QB-049)	15W, 1 x TX COIL (10W Min.)
Power	Normal Input Voltage Range	DC In, 12 VDC \pm 10%
	Power connector	ELR-02V
	Power Consumption	45W Typical
Mechanical	Dimension(WxHxD)	693.4 x 249 x 42.6 mm
	VESA Mount	N / A
Environment	Operating Temperature	0~ 50° C
	Storage Temperature	-20 ~ 60° C (-4 ~ 140° F)
	Humidity	20 ~ 85% @ 40° C, non-condensing
Regulation	Regulation (meet standard)	UL 60950-1, 2nd Edition, 2014-10-14
	EMC and RF	FCC P18 (EMC), FCC P15C (RF) and FCC P2.1091 (MPE)
		CISPR 11 and CISPR 32, EN 301 489-1/-3 (EMC), EN 303 417 (RF) EN 62311 (SAR)

3. External I/O & OSD Function Key

OSD Menu Setting



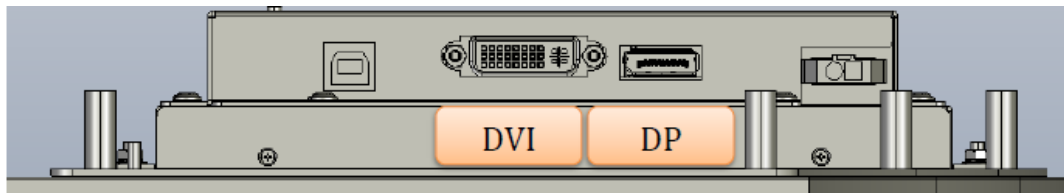
No.	Button	Function
1	Menu	Activates OSD main menu
2	Left (Up)	Left/Up arrow
3	Power	Power On/Off
4	Right (Down)	Right arrow
5	Auto/Exit	Adjust automatically for VGA interface. Exit/Return
-	LED	Blue: On Red: Off



3.1 Input/Output

QM-133BD includes 2 connectors of display output, including DVI and DP. For touch function and power enable, it complies with 1 connector of USB type B for touch connection, and 1 connector of 2 pin for +12V DC power in.

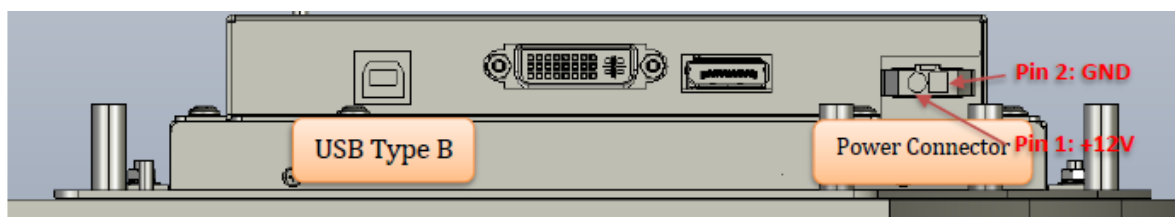
a. DVI & DP Signal Input



b. USB Type B & 2 Pins type Power Connector

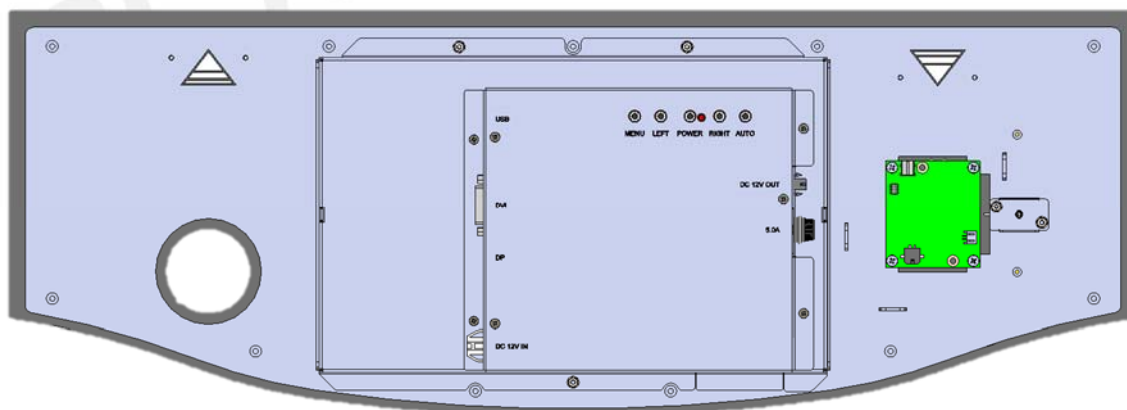
Note: Power connector Pin definition:

Pin1	Pin2
+12V	GND



4. Mounting Design

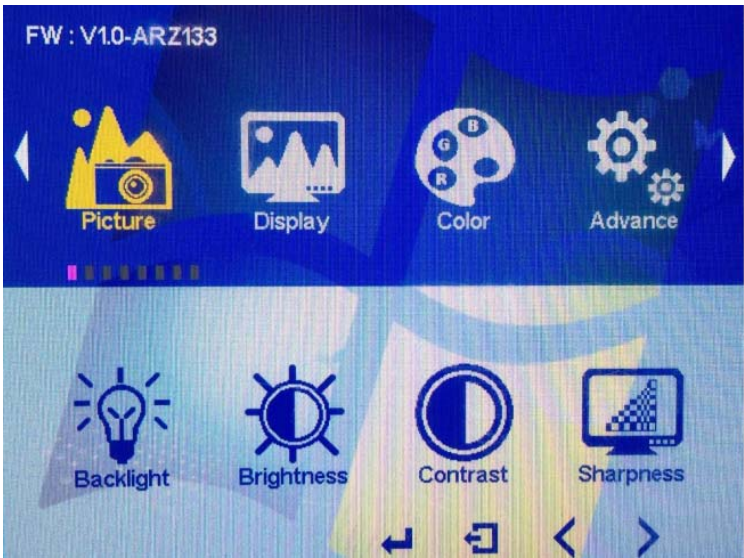
QM-133BD design several mounting features for customer to fit in slot machine, which provide a solid stand onto slot machines. For details specification, please consult specification with Quixant.



5. QM-133BD OSD Menu

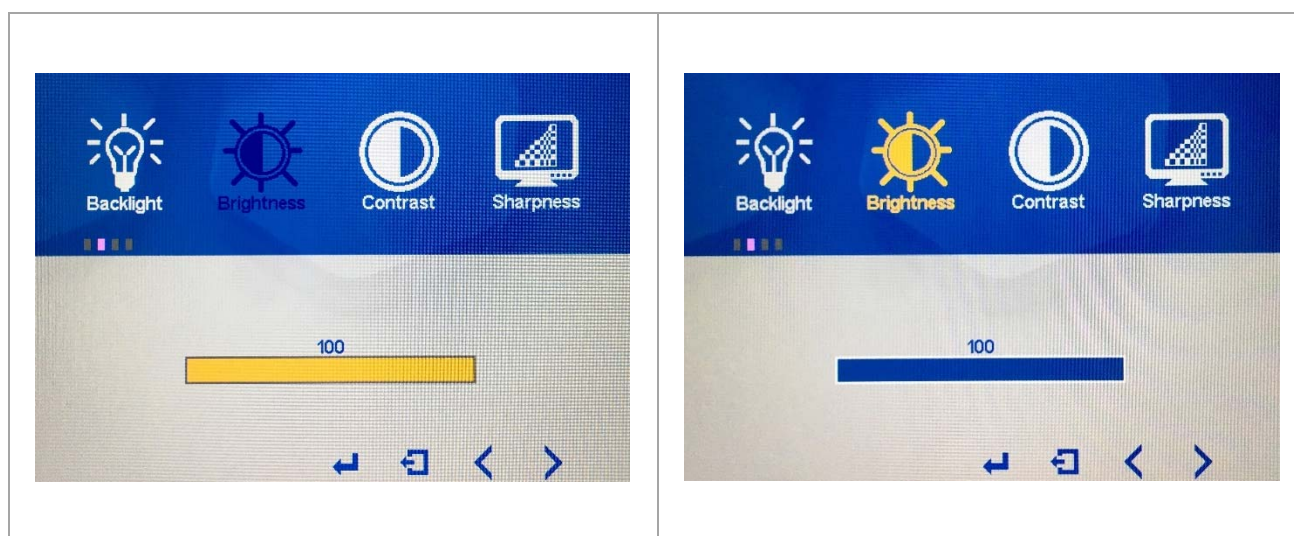
5.1 OSD Menu

a. OSD Main Menu



b. Adjusting and Saving

1. Choose a menu (for example: PICTURE), then Press “Menu” key to enter	2. Choose an item (for example: Brightness), then Press “Menu” key to enter
A screenshot of the OSD Main Menu where the 'Picture' icon is highlighted with a yellow border.	A screenshot of the OSD Brightness adjustment screen. It shows a horizontal slider bar with the value '50' displayed above it. The 'Brightness' icon is highlighted.
3. Use “Left” / “Right” keys to adjust value, then Press “Menu” key to save	4. The item of Brightness adjustment is completed.



5.2 OSD Default Setting

Item	Sub Menu	Description	Default
Picture	Backlight	Adjust the backlight. (0-100)	100
	Brightness	Adjust the brightness. (0-100) (Separate brightness setting by sources)	50
	Contrast	Adjust the contrast. (0-100) (Separate contrast setting by sources)	50
	Sharpness	Adjust the sharpness. (0-4)	2
Display	Disp Rotate	0/180	180
Color	Gamma	Supported gamma. (OFF/2.2)	Calibration: 2.2 No calibration: Off USER = (128, 128, 128) 6500K = (128, 128, 128)
	Temperature	Color temperature schemes. (OFF/6500/User)	6500K
	Hue	Color hue/saturation value. (0-100)	50
	Saturation		50
Advance	Aspect Ratio	Monitor display ratio setting. (Full/16:9/4:3/5:4/1:1/User)	Full
	DDCCI	DCC/CI function. (ON/OFF)	On
Input	Auto Select	Auto source select	Auto
	D0: DP	DP source select	
	D3: DVI	DVI source select	
Other	Reset	Reset user setting (without color setting)	
	Menu Time	Adjust the OSD menu timeout. (5-60 sec)	30
	OSD H Position	Adjust the OSD horizontal position. (0-100)	50
	OSD V Position	Adjust the OSD vertical position. (0-100)	50
	Transparency	Change the transparency of the OSD. (0-7)	2
	OSD Rotate	OSD menu rotate. (0/90/270/180)	180
	Power Saving	0-30 (min), 0: off	1
Information	Input, Resolution, H-Freq, V-Freq, PCLK, HDCP Status		

6. Touch Function Installation

QM-133BD Touch function is designed to easily install. It complies with plug & play function, which allows user to enable the touch function by only connecting QM-133BD and operation systems with USB type B. Hence, the driver and utility is not required. If there's any driver installation question with various operating OS, please consult with Quixant.

7. Wireless Charger Function

In the wireless charging area, you can charge the battery of your phone without connecting any cables to your phone. The device is compliant with the Qi standard.

- All wireless devices may be susceptible to interference, which could affect performance.
- Only qualified personnel may install or repair the device.

Charge your phone

It's simple: place your phone or another Qi-compatible device on the charging area to start charging.

- Place your phone on the charging area. The indicator light is blinking while the phone charges.
- It's normal for the charging area and phone to get warm while charging.
- LED indicator is blue when standby.

