

Federal Communication Commission Interference Statement

This device complies with Part 15 of the FCC Rules. Operation is subject to the following two conditions: (1) This device may not cause harmful interference, and (2) this device must accept any interference received, including interference that may cause undesired operation.

This equipment has been tested and found to comply with the limits for a Class B digital device, pursuant to Part 15 of the FCC Rules. These limits are designed to provide reasonable protection against harmful interference in a residential installation. This equipment generates, uses and can radiate radio frequency energy and, if not installed and used in accordance with the instructions, may cause harmful interference to radio communications. However, there is no guarantee that interference will not occur in a particular installation. If this equipment does cause harmful interference to radio or television reception, which can be determined by turning the equipment off and on, the user is encouraged to try to correct the interference by one of the following measures:

- Reorient or relocate the receiving antenna.
- Increase the separation between the equipment and receiver.
- Connect the equipment into an outlet on a circuit different from that to which the receiver is connected.
- Consult the dealer or an experienced radio/TV technician for help.

FCC Caution: Any changes or modifications not expressly approved by the party responsible for compliance could void the user's authority to operate this equipment.

Radiation Exposure Statement:

This device meets the government's requirements for exposure to radio waves.

This device is designed and manufactured not to exceed the emission limits for exposure to radio frequency (RF) energy set by the Federal Communications Commission of the U.S. Government.

The exposure standard for wireless device employs a unit of measurement known as the Specific Absorption Rate, or SAR. The SAR limit set by the FCC is 1.6W/kg. Tests for SAR are conducted using

standard operating positions (10mm) accepted by the FCC with the device transmitting at its highest certified power level in all tested frequency bands.

To maintain compliance with radio frequency exposure guidelines and limits, keep the 4G Pet locator.

at least 10mm away from your body. When you carry the 4G Pet locator on your body, use only

accessories equipped with an integrated belt clip that are supplied or approved by the manufacturer. If you use a body-worn accessory not supplied by the manufacturer, verify that the accessory does not contain metal and keep the 4G Pet locator at least 10 mm from your body.

Wireless Bluetooth pet location device

Product Specification

Product name: __ Wireless Bluetooth pet locator

Product model: __HW-PET10




Number of revisions	date of issue	Amendments
1	2024/04/09	First- - - - -release

legal notice :

First of all, thank you for using the products of Shenzhen Bosijie Technology Co., LTD. (hereinafter referred to as "Bosijie Technology"). If you agree to the following terms, you will receive our support and services. If you have any questions, please feel free to call us. If you cannot accept the following terms, please stop using this manual.

The ownership of this manual belongs to Shenzhen Bosijie Technology Co., Ltd. Any rights not explicitly granted in this manual are reserved. The manual contains proprietary information of Bosijie Technology. Without the prior written permission of Bosijie Technology, no entity or individual may reproduce, transmit, distribute, use, or disclose this manual, including any images, tables, data, or other information contained within it.

"Bo Shi Jie" and ". "Is the registered trademark of Bosijie Technology. Without the prior written consent of Bosijie Technology, reading this document does not imply by implication, estoppel or otherwise that any reader is granted any right to use any marks appearing in this document."

The storage and use of this product shall comply with the requirements of the product manual, relevant contract or relevant national laws and regulations.

The company reserves the right to modify and improve the products described in this manual without prior notice, and reserves the right to revise or withdraw this manual at any time. If there is any ambiguity in this user manual, please consult the company, agent or distributor in a timely manner.

Catalogue

Chapter 1 Product composition and interface definition	4
I. Product Overview	4
II. Physical diagram of the product	4
3. Product configuration list	4
4. Product interface definition	5
5. Definition of product indicator light	5
Chapter 2 machine parameters and function operation instructions...	6
1. Product whole machine parameter table	6
2. Product whole machine function table	6
3. Product installation operation process	7
Chapter 3 Product APP usage function and operation instructions	8
1. Download the APP [TracePet] on your mobile phone	8
2. Log in and register interface	8
3. Device binding/cutting and unbinding	8
Function Introduction	8
Chapter 4 Analysis of common problems and after-sales service	9
I. Analysis of common problems	9

Chapter 1 Product composition and interface definition

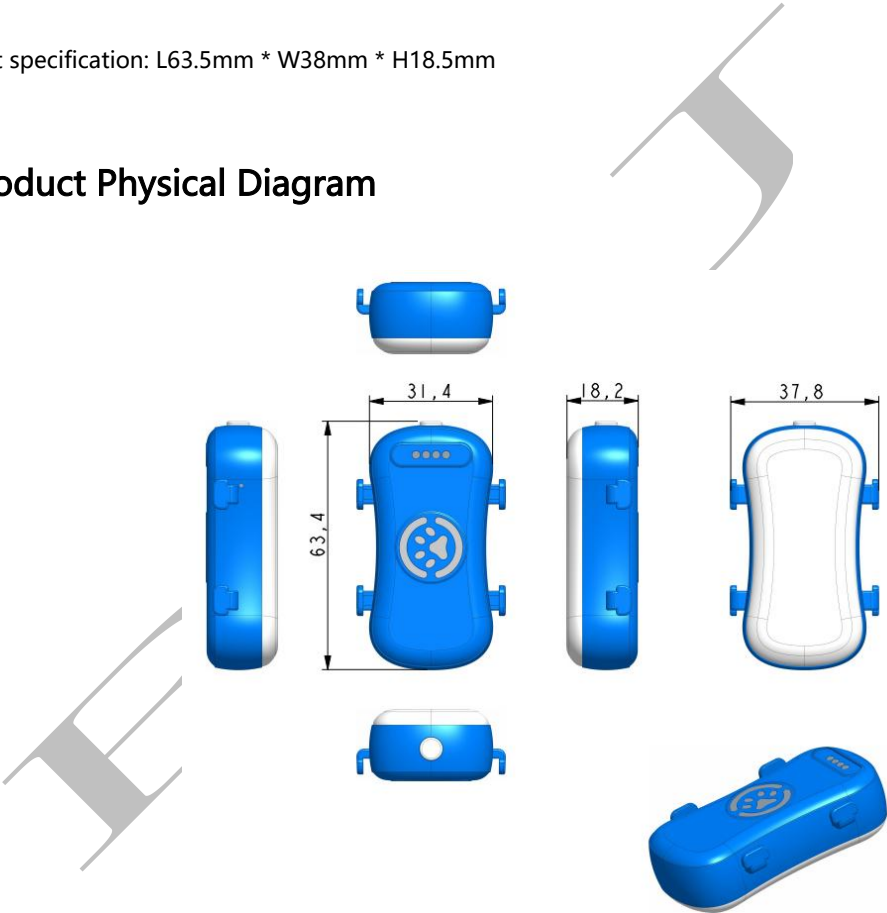
I. Product Overview

Product name: Wireless Bluetooth pet locator

Product model: HW-PET10

Product specification: L63.5mm * W38mm * H18.5mm

2. Product Physical Diagram



3. Product Configuration List

Standard product list

序号	name	quantity	unit	remarks
1	HW-PET10 host	1	short for Tachou	
2	Manual, warranty card, certificate of conformity	1	stem or root of plants	1 stem or root of plants
3	USB cable	1	twig	
4	necklace	1	twig	apolegamy

4. Product Interface Definition



Magnetic charging port

5. Definition of Product Indicator Light

Definition of indicator lights	Charging light (Blue, green)	Charging: The blue light flashes every 3 seconds Fully charged: Green light on every 3 seconds
	Working lamp status (red)	Flash: Device initialization Slow flash: The device is searching the network Changliang: After the equipment is turned on and started up for 5 minutes, the light goes out

Chapter 2 Overall Parameters and Function Operation Instructions

I. Product Whole Machine Parameter Table

order number	project	Specifications	remarks
1	working voltage	DC3.1V -4.35V	
2	charging voltage		
3	working current	20mA@4V (operational) 1.2mA@4V (standby) 160mA@4V (pet seeking)	When not charged
4	specification and dimension	L63.5mm*W38mm* H18.5mm	
5	location mode	GPS+ BD、 WiFi	
6	positional error	<10m (this data is for reference, positioning error is related to the area and time of the equipment)	This data is measured in the company's laboratory
7	CN		Communication frequency band: B1/B2 B3/B4/B5/B7/B8/B20/B28/B40/B41/B66
8	communication mode		
9	operating temperature range	-25℃~ +75℃	
10	Storage temperature range	-40℃~ +85℃	
11	Battery life	Standby for 20 days	Rated 800mA

12	weight of equipment	g	
----	---------------------	---	--

Bosijie

2. Product Whole Machine Function Table

functional block	Function details	function declaration
work pattern	standby mode	When the return time is set to 0 seconds, the device can call out, heartbeat for 300 seconds, return the platform call out, and upload the latest location point
	Smart power saving mode	When vibration is detected, the device sends back data after 30 seconds. GPS and WIFI are activated simultaneously. During GPS positioning, the device uploads latitude and longitude coordinates; during WIFI positioning, the platform parses these coordinates into geographic coordinates. If there is no vibration for 5 consecutive minutes, the device enters a stationary state and sends back heartbeat data every 300 seconds
	Power saving mode	The return time is 600 seconds, and the longitude and latitude and other positioning information are uploaded. The heartbeat is 300 seconds, and the return time is 600 seconds. WIFI positioning is preferred, and GPS is enabled if not positioned. If GPS is not positioned, the last valid positioning is uploaded
	Super long battery life mode	The return time is 3600 seconds, and the longitude and latitude and other positioning information are uploaded. The heartbeat is 300 seconds. WIFI positioning is preferred, GPS is enabled if not, and the last valid positioning is uploaded if GPS is not available
	The permanent station is smart and power-saving	The device scans the resident WIFI every 120 seconds. If there is no resident WIFI, the GPS is turned on, and the GPS does not upload the data of the previous positioning point
Lighting mode (smart power)	Flash mode	The equipment flash light flashes once every 100ms

saving / smart power saving at the permanent point only flashes when in motion mode)	Normal flickering	The equipment flash light flashes every 400ms
	Slow flash mode	The equipment flash light flashes once every 1s
Petting	Bluetooth petting	<p>The equipment flash light flashes every 200ms</p> <p>The device buzzer rings every 200ms</p> <p>The APP will search according to the Bluetooth signal sent by the device. When the mobile APP searches for the Bluetooth signal of the device, the APP page will prompt that the device has been searched</p>
Other features	Auxiliary positioning function	The terminal supports auxiliary positioning function to enhance the positioning effect
	Low voltage alarm	When the device voltage is lower than 3.5V, an alarm will be uploaded to the platform
	Remote upgrades	Upgrade the manager remotely

low power consumption	Standby mode	The 3D three-axis acceleration sensor can perceive the vibration state of the device in real time. When powered on, it is in motion mode. When the host is stationary for 5 minutes, it is in static mode. The GPS module is turned off, and it enters motion mode when there is vibration.
-----------------------	--------------	---

SMS Remote Online Setting

The specific SMS setting format is as follows:

Edit the content of the text message:

<SPBSJ*P:BSJGPS*Q:y. gpstracktech.com:7788*N:17811113333*A: XXX>

SPBSJ

Text message head

*P:BSJGPS

password

*Q:y. gpstracktech.com:7788

TCPIP/ port

*N:17811113333

Machine number (up to 15 digits)

*A:XXX

APN (up to 25 characters)

Chapter 3 Product APP Usage Function and Operation Instructions

1. Download the APP [TracePet] on Your Mobile Phone



Google Play

Android download



iOS APP Store

Download IOS version

2. Landing Registration Interface

The login/registration interface is as follows: Click ① to enter the registration page and register your account

Trace Pet
Every step of your pet is a trail of love

Sign up

Email
Enter Email

Password
Enter password

☐ Login to account indicates agreement Terms of User , PrivacyPolicy and Third Party Services

Create Account

Already have an account? [Log In](#)

Email
Enter Email

Password
Enter password

[Sign Up](#) ① [Reset password](#)

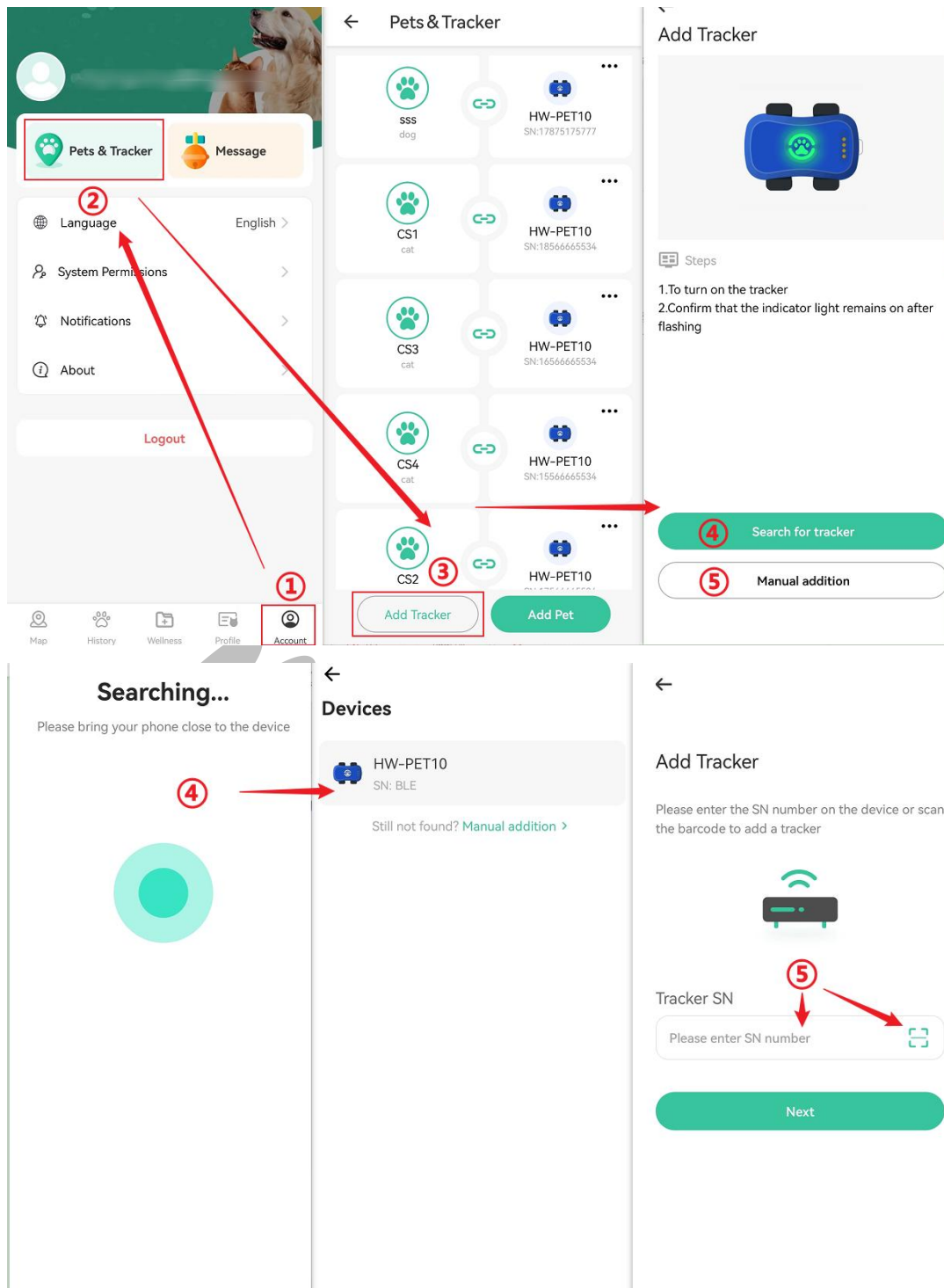
☐ Login to account indicates agreement Terms of User , PrivacyPolicy and Third Party Services

Login

3. Add Binding, Switch and Unbind the Device

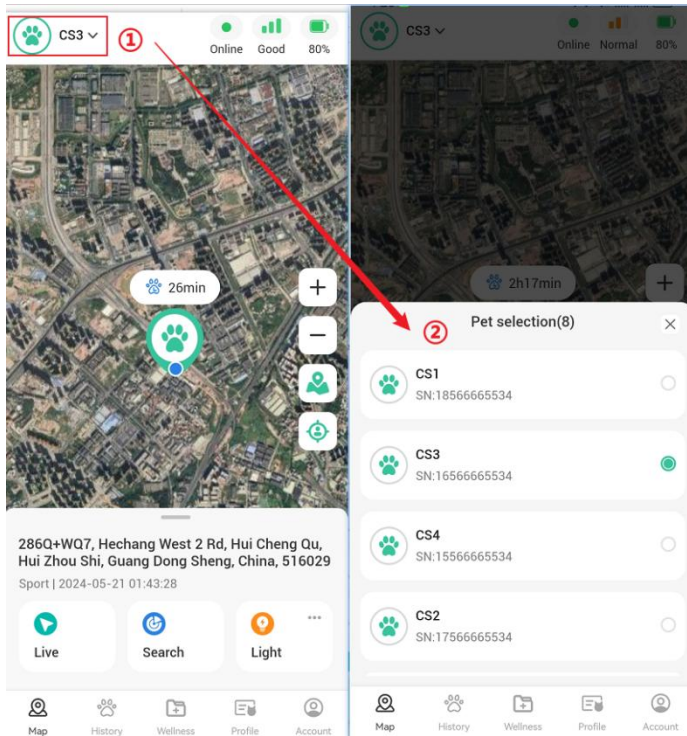
1.Add Bound Devices

When you log in to your first registered account, the "Add Tracker" page will pop up. To add devices for the second time, follow the steps in the figure below "①②③". You can bind devices by automatically searching through "④" or manually entering the SN number through "⑤". (Confirm to add successfully)



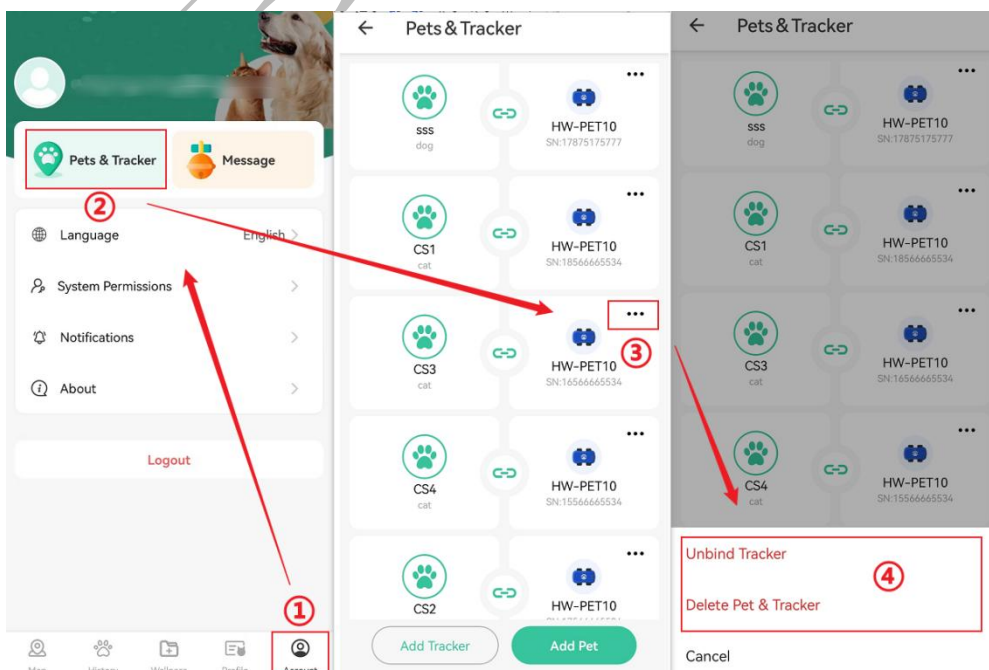
2. Switch Devices

In the APP home page, you can click "①" to switch devices. After clicking, you can switch management devices through the device list of "Pet selection" in "②".



3. Unbind the Device

Click "①" to enter "Account", and then click "②" to enter the list of "Pet&Tracker" devices. Follow step "③" to click "Unbind Tracker" to unbind the device, and "Delete Pet&Tracker" can remove the association between the pet and the device.



Function Introduction

Page introduction

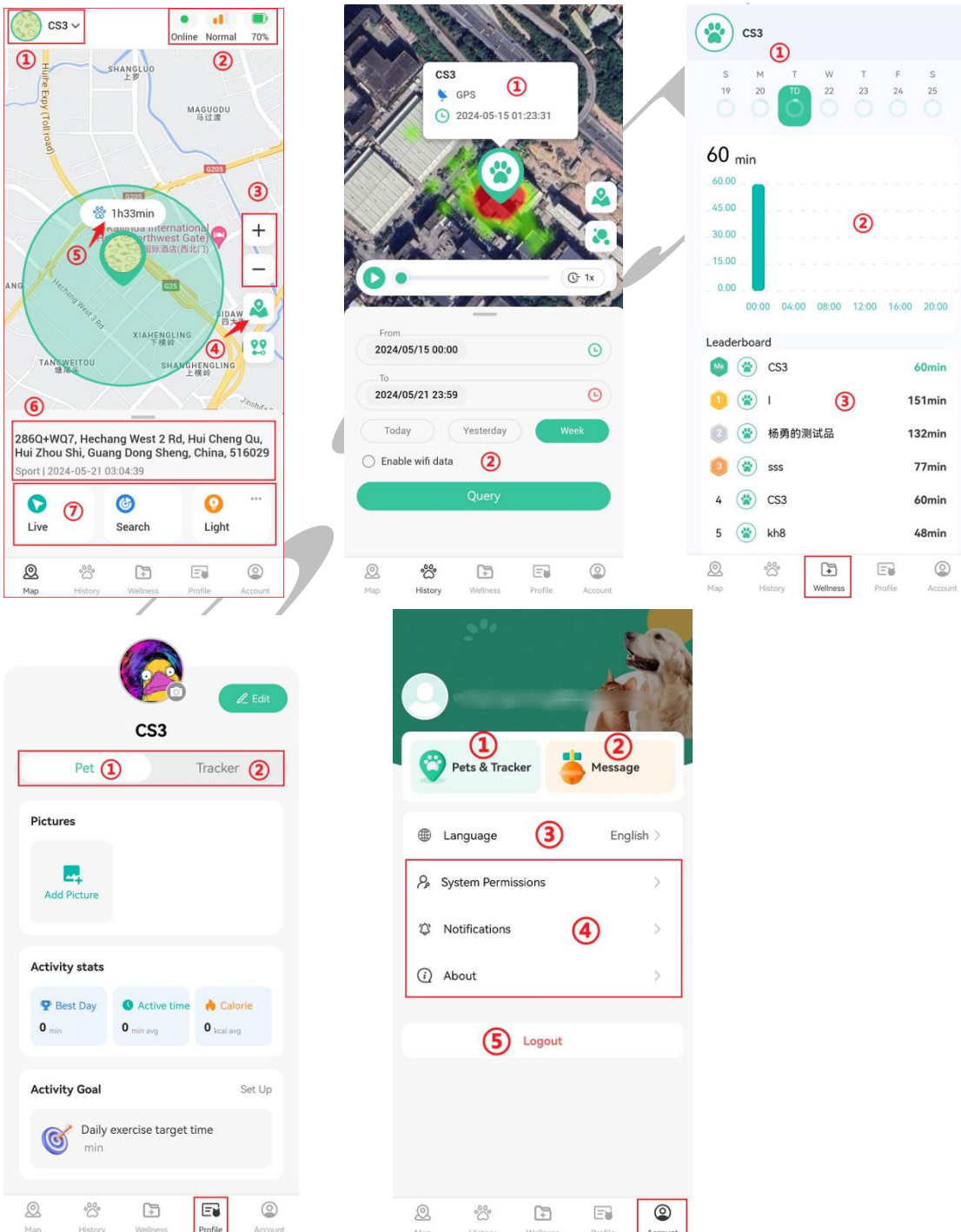
Map: ① Device switching ② Device status ③ Map size adjustment ④ Map mode switching ⑤ Movement time ⑥ Location address, time, device mode ⑦ Command button

History: ① Equipment status information ② Historical motion trajectory (heat map) query

Wellness: ① Date selection ② Period and duration statistics of exercise ③ Total ranking of pet exercise duration

Profile: ① Pet information setting ② Device parameter setting

Account: ① Device management list ② Device notification message ③ Language switch ④ App permission/Notification Settings/Use Agreement ⑤ Log out



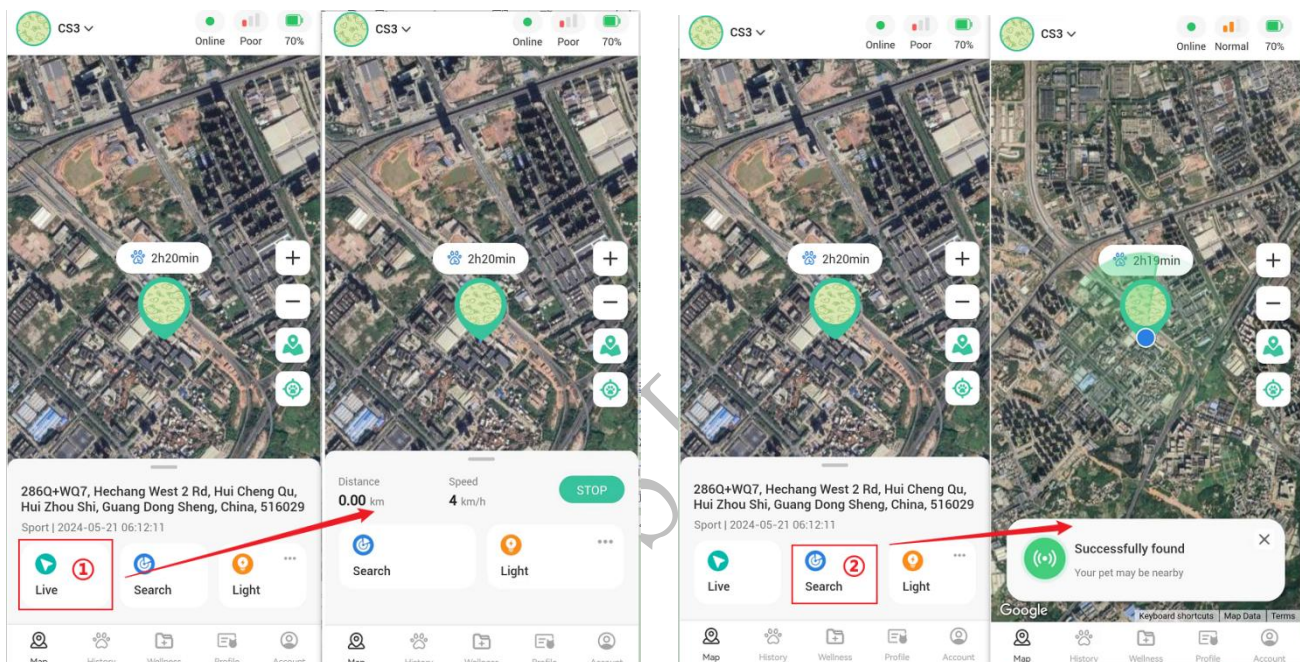
Map home page function introduction

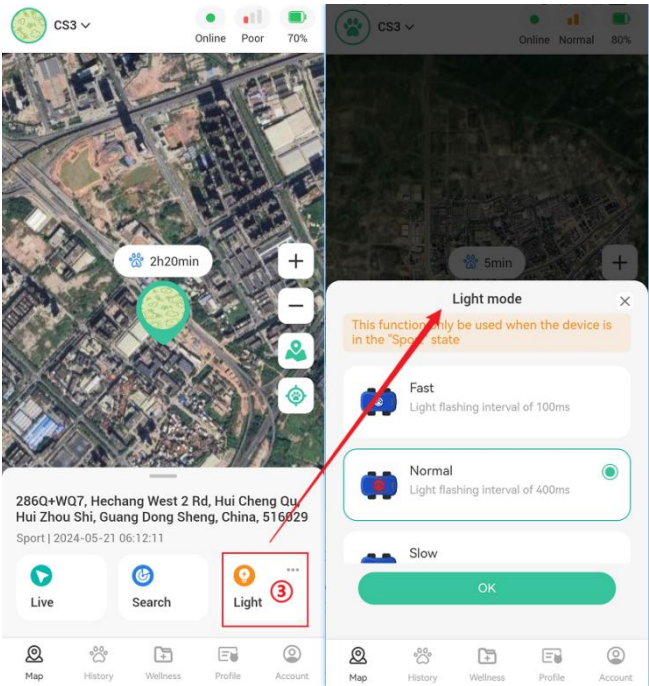
① Real-time tracking: Click "Live" (mobile phone Bluetooth is turned on), confirm the activation of pet searching mode and activate the tracking mode of the device. The distance and moving speed can be displayed in real time, and bluetooth pet searching and light flashing can be issued at any time. When the device is near the mobile phone, a prompt will appear;

② Bluetooth pet finding: Click "Searching" (mobile phone Bluetooth is turned on), the device will emit a prompt sound and light flashing after receiving the command, and the mobile phone will appear a scanning information prompt;

(1) Search "Looking for your pet, please wait" (2) Search successful! Your pet may be nearby

③ Light mode: three light modes (100ms flash, 400ms normal, 1s slow flash)/ turn off the light



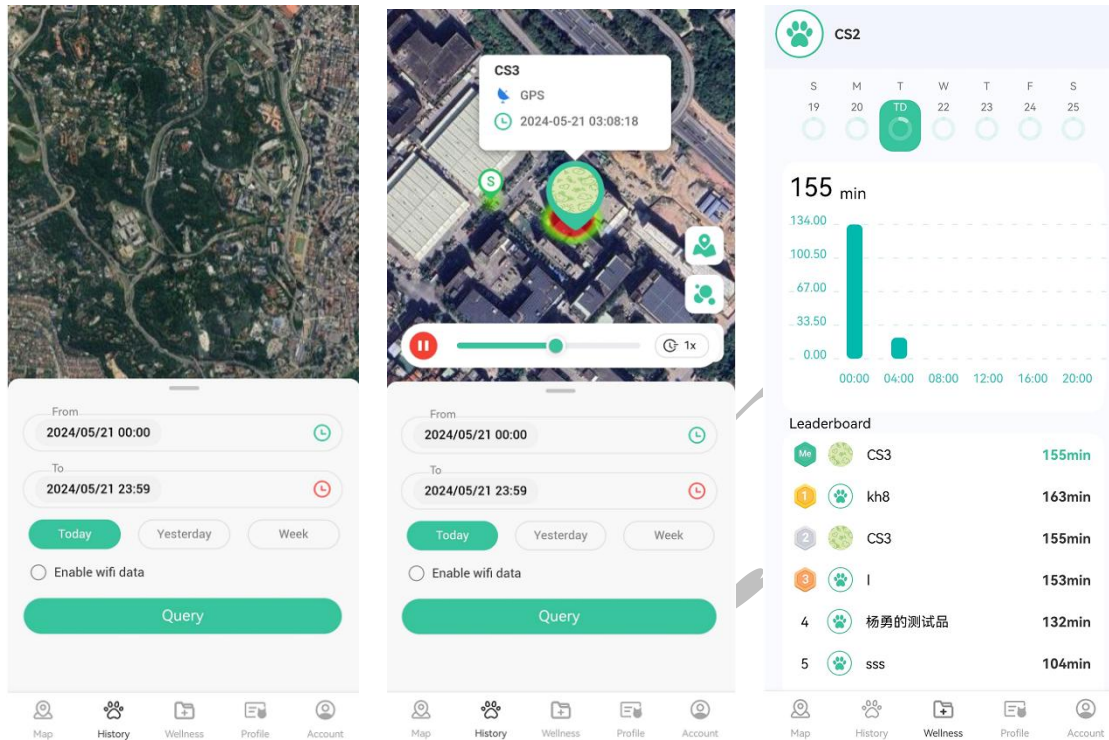


BSJ

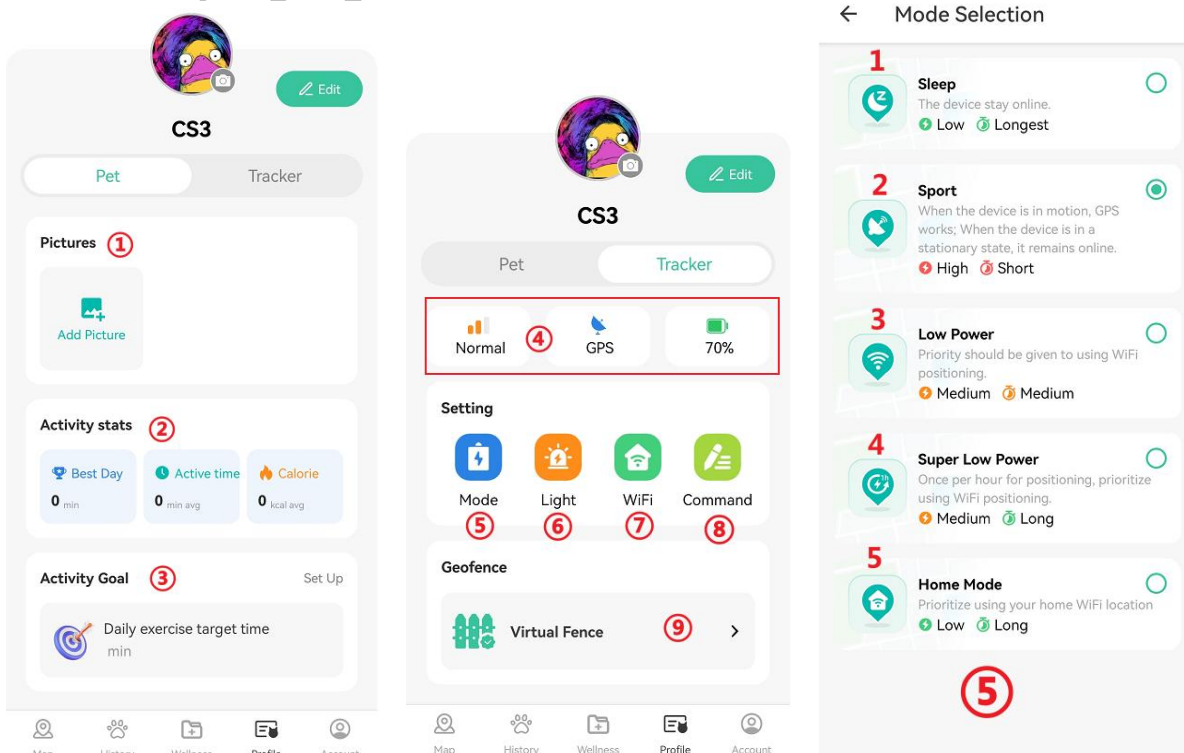
Other page functions:

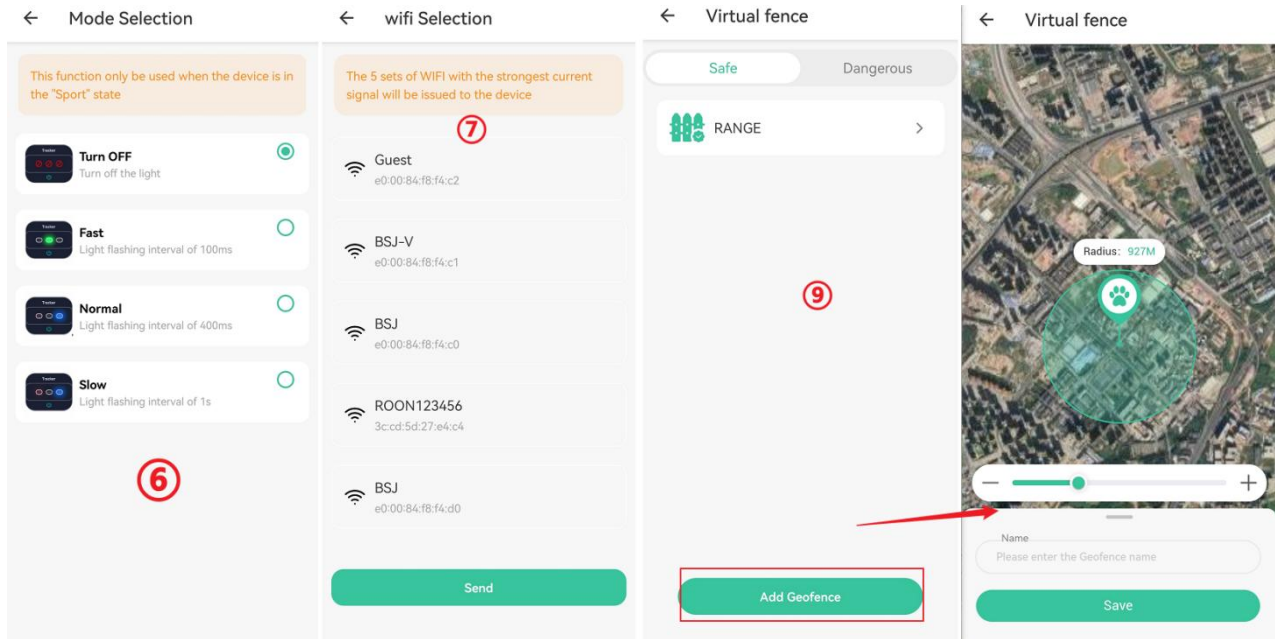
History: You can query the pet movement heat map

Wellness: Pet exercise time ranking can count the daily exercise time of pets and rank all the exercise data of pets.

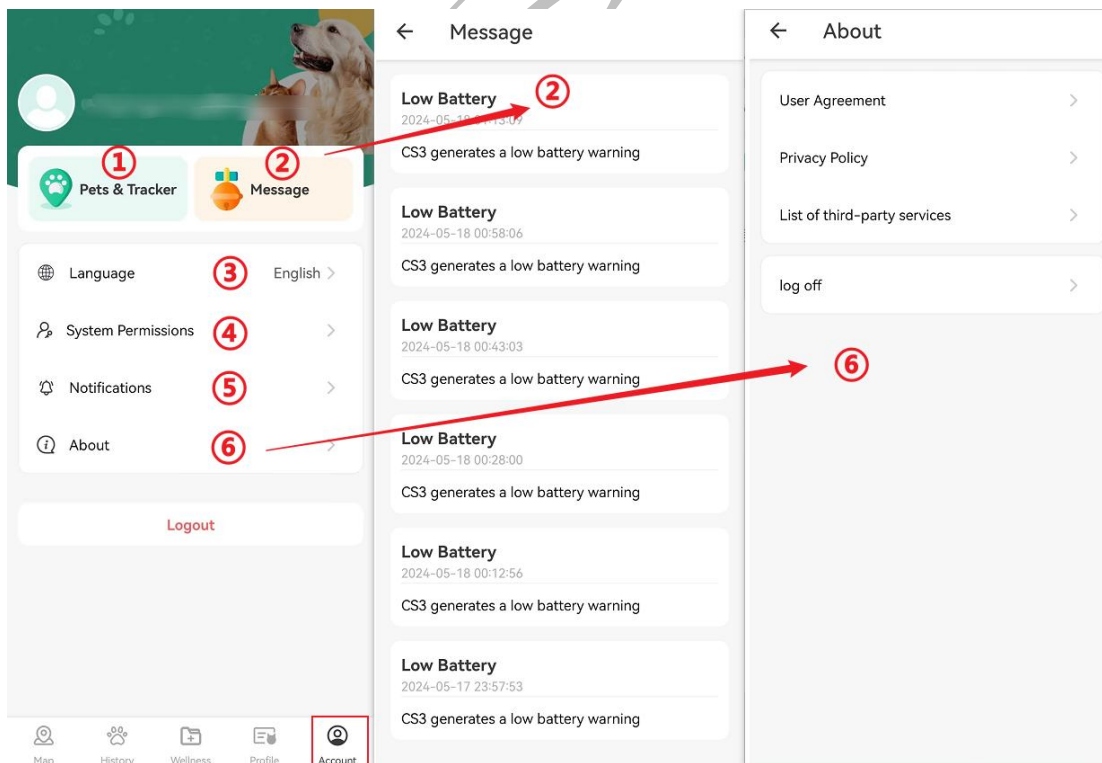


Profile: Pet & Device Settings: ① Add pet pictures ② Track pet activity status ③ Set the target time for pet exercise ④ Display device status information ⑤ Select work mode (1. Standby mode 2. Smart power-saving mode 3. Power-saving mode 4. Ultra-long battery life mode 5. Smart power-saving mode at a fixed point) ⑥ Light mode ⑦ Send to fixed-point WiFi ⑧ Send custom commands ⑨ Set the fence





Account: ① Manage and set device parameters in bulk, add or delete devices. ② View device messages ③ Language switching ④ System permission ⑤ Notification messages ⑥ Personal agreements, privacy policies, third-party service list, account logout.



Chapter 4 Analysis of Common Problems and After-Sales Service

I. Analysis of Common Problems

1 Analysis and Troubleshooting of Common Problems		
fault phenomenon	analysis of causes	processing method
The center cannot monitor	SIM card is out of service due to unpaid fees	Contact the network operator to pay
	The online parameter setting is incorrect	Refer to the manual for resetting parameters
Can't be located	The device is in a weak signal area	You can recover by leaving the area with poor signal
	The device is in a weak signal area	The device can be restored when it leaves the above area