



HAC Receive Volume Control Test Report

For

Applicant Name: FOXX Development Inc.
Address: 3480 Preston Ridge Road, Suite500, Alpharetta, GA 30005, USA
EUT Name: Smart Phone
Brand Name: FOXXD, FOXX, MIRO
Model Number: A671

Issued By

Company Name: BTF Testing Lab (Shenzhen) Co., Ltd.
Address: 101/201/301, Building 1, Block 2, Tantou Industrial Park, Tantou Community, Songgang Subdistrict, Bao'an District, Shenzhen, China

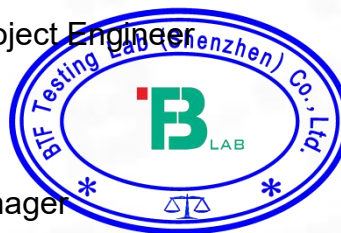
Report Number: BTF241008R03003
Test Standards: ANSI C63.19:2019 FCC 47 CFR §20.19 TIA-5050:2018
FCC ID: 2AQRM-A671

Test Conclusion: Pass
Test Date: 2025-08-07 to 2025-08-10
Date of Issue: 2025-08-11

Tested By: Kris . Li
Date: Kris Li / Test Engineer
2025-08-11

Reviewed By: Amenda Zhong
Date: Amenda Zhong / Project Engineer
2025-08-11

Approved By: Ryan.CJ
Date: Ryan.CJ / EMC Manager
2025-08-11



Note: All the test results in this report only related to the testing samples. Which can be duplicated completely for the legal use with approval of applicant; it shall not be reproduced except in full without the written approval of BTF Testing Lab (Shenzhen) Co., Ltd., All the objections should be raised within thirty days from the date of issue. To validate the report, you can contact us.

Revision History		
Version	Issue Date	Revisions Content
Rev_V0	2025-08-11	Original
Note:	Once the revision has been made, then previous versions reports are replaced by the latest version.	

Table of Contents

1. Introduction	4
1.1 Identification of Testing Laboratory	4
1.2 Identification of the Responsible Testing Location	4
1.3 Laboratory Condition	4
1.4 Announcement	4
2. Product Information	5
2.1 Application Information	5
2.2 Manufacturer Information	5
2.3 Factory Information	5
2.4 General Description of Equipment under Test (EUT)	5
2.5 Equipment under Test Ancillary Equipment	6
2.6 Technical Information	6
3. Summary of Test Results	7
3.1 Test Standards	7
3.2 Air Interfaces / Bands Indicating Operating Modes	7
4. Test Uncertainty	8
5. Measurement System	9
5.1 MEASUREMENT SET-UP	9
6. Evaluation of Test	10
6.1 RECEIVE VOLUME CONTROL PERFORMANCE	10
6.2 RECEIVE DISTORTION AND NOISE PERFORMANCE	11
6.3 RECEIVE ACOUSTIC FREQUENCY RESPONSE PERFORMANCE	12
7. Test Equipment List	14
8. Air Interfaces / Bands used for testing	14
9. Test Result	15
9.1 Receive volume control, distortion and noise performance	15
9.2 Receive acoustic frequency response performance	17
10. EUT photograph	18
ANNEX A Test Data	19
1.1 Receive Distortion and Noise 8N NB	19
1.2 Receive Distortion and Noise 2N NB	21
1.3 Receive Frequency Response	24
2.1 Receive Distortion and Noise 8N WB	25
2.2 Receive Distortion and Noise 2N WB	29
2.3 Receive Frequency Response	33
3.1 Receive Distortion and Noise 8N WB	34
3.2 Receive Distortion and Noise 2N WB	38
3.3 Receive Frequency Response	42
ANNEX B Test Setup Photo	43
ANNEX C CALIBRATION REPORT	43

1. Introduction

1.1 Identification of Testing Laboratory

Company Name:	BTF Testing Lab (Shenzhen) Co., Ltd.
Address:	101/201/301, Building 1, Block 2, Tantou Industrial Park, Tantou Community, Songgang Subdistrict, Bao'an District, Shenzhen, China
Phone Number:	+86-0755-23146130
Fax Number:	+86-0755-23146130

1.2 Identification of the Responsible Testing Location

Test Location:	BTF Testing Lab (Shenzhen) Co., Ltd.
Address:	101/201/301, Building 1, Block 2, Tantou Industrial Park, Tantou Community, Songgang Subdistrict, Bao'an District, Shenzhen, China
Description:	All measurement facilities used to collect the measurement data are located at 101/201/301, Building 1, Block 2, Tantou Industrial Park, Tantou Community, Songgang Subdistrict, Bao'an District, Shenzhen, China
FCC Registration Number	518915
Designation Number	CN1409

1.3 Laboratory Condition

Ambient Temperature:	18°C to 25°C
Ambient Relative Humidity:	32% to 49%
Ambient Pressure:	100 kPa to 102 kPa

1.4 Announcement

- (1) The test report reference to the report template version v0.
- (2) The test report is invalid if not marked with the signatures of the persons responsible for preparing, reviewing and approving the test report.
- (3) The test report is invalid if there is any evidence and/or falsification.
- (4) This document may not be altered or revised in any way unless done so by BTF and all revisions are duly noted in the revisions section.
- (5) Content of the test report, in part or in full, cannot be used for publicity and/or promotional purposes without prior written approval from the laboratory.
- (6) The laboratory is only responsible for the data released by the laboratory, except for the part provided by the applicant.

2. Product Information

2.1 Application Information

Company Name:	FOXX Development Inc.
Address:	3480 Preston Ridge Road, Suite500, Alpharetta, GA 30005, USA

2.2 Manufacturer Information

Company Name:	FOXX Development Inc.
Address:	3480 Preston Ridge Road, Suite500, Alpharetta, GA 30005, USA

2.3 Factory Information

Company Name:	FOXX Development Inc.
Address:	3480 Preston Ridge Road, Suite500, Alpharetta, GA 30005, USA

2.4 General Description of Equipment under Test (EUT)

EUT Name	Smart Phone
Under Test Model Name	A671
Series Model Name	N/A
Description of Model name differentiation	N/A
Hardware Version	N/A
Software and Firmware Version	N/A
Dimensions (Approx.)	167*75*9mm
Weight (Approx.)	190g

2.5 Equipment under Test Ancillary Equipment

Ancillary Equipment 1	Battery	
	Model No.	A671
	Serial No.	N/A
	Nominal Voltage	3.87 V

2.6 Technical Information

Network and Wireless connectivity	2G Network GSM/GPRS/EGPRS 850/1900 3G Network WCDMA/HSDPA/HSUPA Band 2/4/5 4G Network FDD LTE Band 2/4/5/12/17/66/71 TDD LTE Band 41 2.4G WIFI 802.11b, 802.11g, 802.11n(HT20/40) Bluetooth (EDR+BLE)
-----------------------------------	---

3. Summary of Test Results

3.1 Test Standards

No.	Identity	Document Title
1	ANSI C63.19-2019	American National Standard for Methods of Measurement of Compatibility between Wireless Communication Devices and Hearing Aids
2	FCC 47 CFR §20.19	Hearing Aid Compatible Mobile Headsets
3	TIA-5050:2018	Telecommunications Communications Products Receive Volume Control Requirements for Wireless (Mobile) Devices
4	KDB285076 D05v01	HACWaiverDA23-914
5	KDB285076 D04v02	Volume Control
6	KDB285076 D01v06r04	HAC Guidance

3.2 Air Interfaces / Bands Indicating Operating Modes

Air Interface	Band	C63.19 Tested	Type	Simultaneous Transmitter	Name of Service
GSM	850	Yes	VO	WLAN & BT	CMRS Voice
	1900	Yes	VO	WLAN & BT	CMRS Voice
	GPRS/EGPRS	No	VD	N/A	N/A
WCDMA	Band II	Yes	VO	WLAN & BT	CMRS Voice
	Band IV	Yes	VO	WLAN & BT	CMRS Voice
	Band V	Yes	VO	WLAN & BT	CMRS Voice
	HSPA	No	VD	N/A	N/A
LTE	Band 2	Yes	VD	WLAN & BT	VoLTE
	Band 4	Yes	VD	WLAN & BT	VoLTE
	Band 5	Yes	VD	WLAN & BT	VoLTE
	Band 12	Yes	VD	WLAN & BT	VoLTE
	Band 17	Yes	VD	WLAN & BT	VoLTE
	Band 41	Yes	VD	WLAN & BT	VoLTE
	Band 66	Yes	VD	WLAN & BT	VoLTE
	Band 71	Yes	VD	WLAN & BT	VoLTE
WLAN	2.4g	No	DT	WWAN	N/A
BT	2450	No	DT	WWAN	N/A

NA: Not Applicable
VO: Voice Only
VD: CMRS and IP Voice Service over Digital Transport
DT: Digital Transport Only
Note: The hearing aid compatibility mode of the prototype was turned on during testing, and all tests were performed in HAC mode.

4. Uncertainty Assessment

The component of uncertainty may generally be categorized according to the methods used to evaluate them. The evaluation of uncertainty by the statistical analysis of a series of observations is termed a Type A evaluation of uncertainty. The evaluation of uncertainty by means other than the statistical analysis of a series of observation is termed a Type B evaluation of uncertainty. Each component of uncertainty, however evaluated, is represented by an estimated standard deviation, termed standard uncertainty, which is determined by the positive square root of the estimated variance.

The combined standard uncertainty of the measurement result represents the estimated standard deviation of the result. It is obtained by combining the individual standard uncertainties of both Type A and Type B evaluation using the usual "root-sum-squares" (RSS) methods of combining standard deviations by taking the positive square root of the estimated variances. Expanded uncertainty is a measure of uncertainty that defines an interval about the measurement result within which the measured value is confidently believed to lie. It is obtained by multiplying the combined standard uncertainty by a coverage factor. For purpose of this document, a coverage factor two is used, which corresponds to confidence interval of about 95 %.

The judgment of conformity in the report is based on the measurement results excluding the measurement uncertainty.

Declaration of Conformity:

The test results with all measurement uncertainty excluded is presented in accordance with the regulation limits or requirements declared by manufacturers.

Comments and Explanations.

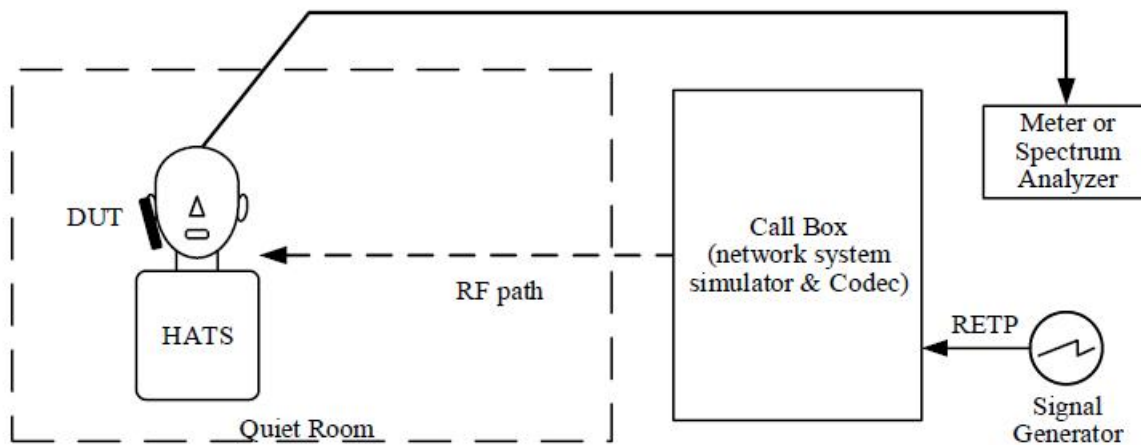
The declared of product specification for EUT presented in the report are provided by the manufacturer, and the manufacturer takes all the responsibilities for the accuracy of product specification.

Component	Standard Uncertainty (dB)	U ² (%)
Generator Accuracy To enable harmonic distortion measurements to 0.1%, the generator distortion must be <0.05%. This is equivalent to a standard uncertainty of 0.043 dB.	0.043	0.25
Ear Simulator Pressure Sensitivity (incl. Measurement Mic.) The uncertainty of the ear simulator as per the standards and quoted on its calibration certificate is 0.3 dB with a coverage factor of k= 2. This is equivalent to a standard uncertainty of $0.3/2 = 0.15$ dB	0.15	3.03
Microphone Preamplifier The manufacturer quotes the preamp to be within + 0.02 dB with a 95% probability or 2σ. This is equivalent to a standard uncertainty of $0.02/2 = 0.01$ dB.	0.01	0.01
Analysis System/RMS Detector Typical measurement system detector accuracy is 0.1 dB with a coverage factor of k= 2. This is equivalent to a standard uncertainty of $0.1/2 = 0.05$ dB	0.05	0.33
Effect of Positioning on Mid-Band Sensitivity For a handset, with the HATS positioning jig, the typical standard deviation estimated from a statistically significant number of measurements is +2 dB. This is equivalent to a standard uncertainty of 2 dB.	2	670.42
Time Varying Effects of the Mouth Simulator for Send & Sidetone For a receive measurement on a handset, the mouth simulator is not used (its uncertainty is zero), The standard uncertainty of 0 dB	0	0
Total Standard Uncertainty (%)	25.06	
UMAX(k=2)(%)	51.9	
UMAX(k=2)(dB)	3.6	

5. Measurement System

5.1 MEASUREMENT SET-UP

The general test arrangement is shown in Figure 1. The Call Box passes the voice channel stream to the DUT without modification. There is no gain or loss in the voice channel stream due to the Call Box interface.



NOTES:

1. Additional information related to the air interface for the various RF technologies is specified in several 3GPP documents. A list of these can be found in 3GPP TS 26.132 V14.0.0 clause 4
2. Additional information related to the test setup can be found in 3GPP TS 26.132, V14.0.0 clause 5.1.
3. The RETP (receive electrical test point) is the point in the device test arrangement where signals are applied to the DUT in the receive direction.

6. Evaluation of Test

6.1 RECEIVE VOLUME CONTROL PERFORMANCE

6.1.1 Requirement

1. With a mounting force of 8N, the DUT shall have at least one volume control setting that will produce a conversational gain of ≥ 6 dB with the output distortion and the frequency response meeting the requirements in clause 5.2.1 & 5.3.1 respectively.
2. With a mounting force of 2N, the DUT shall have at least one volume control setting that will produce a conversational gain of ≥ 6 dB with the output distortion and the frequency response meeting the requirements in clause 5.2.1 & 5.3.1 respectively.

NOTE: Other acoustic receive features may be available such as additional amplification, tone control, automatic gain control, etc. ANSI/TIA-4953-B contains performance requirements for output levels and tone control operation for amplified devices.

6.1.2 Method of Measurement

1. Configure the DUT with a mounting force of 8N and test equipment as shown in Figure 1 in an active call state with the applicable codec for the transmission mode under test.
2. Set the DUT volume control to the maximum setting.
3. If the DUT has an adjustable tone control feature, a tone control setting that meets the frequency response requirements in section 5.3.1 shall be used.
4. Apply the real speech test signal at a level of -20 dBm0 at the RETP and measure the acoustic output at the Drum Reference Point (DRP) over one complete sequence of the test signal.
5. Translate the measurement made at the DRP to the Free Field (FF) using the translation data in Annex B.
6. Over the applicable frequency band, determine the ASL in dBSPL for the resulting sound pressure level in accordance with Method B of ITU-T Recommendation P.56:
 - a. Narrowband 100 Hz through 4000 Hz.
 - b. Wideband 100 Hz through 7720 Hz.
7. Calculate the Conversational Gain by subtracting 70 dB from the measured dBSPL.
[Conversational Gain = (Measured dBSPL Level – 70 dBSPL) dB]
8. Measure the output distortion per clause 5.2. If a distortion failure occurs at the maximum volume control setting, reduce the volume control setting and repeat the measurement to determine if a setting can be found for which the conversational gain requirement is met without a distortion failure.
9. Repeat steps 2-8 with a mounting force of 2N.

6.1.3 Test Result

Refer to Part Nine test result.

Remark: The report only reflects the test data plots of worst mode (for GSM 850, WCDMA Band 2, LTE Band 2)

6.1.4 Test Conclusion

PASS.

6.2 RECEIVE DISTORTION AND NOISE PERFORMANCE

6.2.1 Requirement

With a mounting force of 8N and 2N, the ratio of the stimulus signal power to the 100 Hz to 8000 Hz total A-weighted distortion and noise power shall be ≥ 20 dB when tested over the range of 1/3 octave band center frequencies:

1. Narrowband transmission mode: Each 1/3 octave band center frequency from 400 Hz to 3150 Hz.
2. Wideband transmission mode: Each 1/3 octave band center frequency from 250 Hz to 5000 Hz.

6.2.2 Method of Measurement

1. Configure the DUT with a mounting force of 8N and test equipment as shown in Figure 1 in an active call state with the applicable codec for the transmission mode under test with the volume control at the setting determined in 5.1.1.
2. Receive distortion and noise is measured using the PN-SDNR procedure as described in Annex A.
3. To ensure DUT activation, apply the real speech test signal at a level of -20 dBm0 followed immediately by the initial 1/3 octave center frequency PN test signal in Table A.1 based on the narrowband or wideband operating mode. Measure the acoustic output at the DRP over the complete sequence of the PN test signal.
4. Translate the measurement made at the DRP to the FF using the translation data in Annex B.
5. Calculate the acoustic output unweighted total signal power of the stimulus measurement band as described in A.2.
6. Calculate the notched A-weighting distortion and noise components as described in A.3.
7. Calculate the ratio of the signal power to the total A-weighted distortion and noise power using Eq A-1.
8. Repeat for each of the remaining 1/3 octave center frequencies in Table A.1 based on the narrowband or wideband operating mode.
9. Repeat steps 2-8 with a mounting force of 2N.

6.2.3 Test Result

Refer to test Annex A.

Remark: The report only reflects the test data plots of worst mode (for GSM 850, WCDMA Band 2, LTE Band 2)

6.2.4 Test Conclusion

PASS.

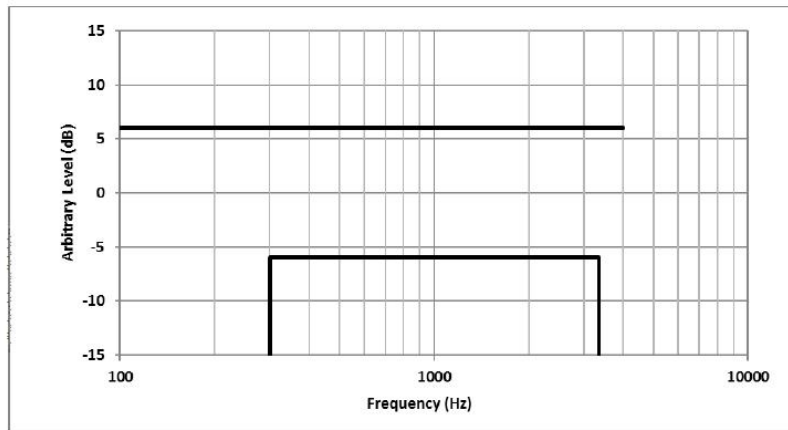
6.3 RECEIVE ACOUSTIC FREQUENCY RESPONSE PERFORMANCE

6.3.1 Requirement

1. Narrowband: The 1/12 octave band frequency response after translation to the FF or DF shall fall between the upper and lower limits given in Table 1 and shown in Figure below.

Table 1 – Narrowband Receive Frequency Response Limits

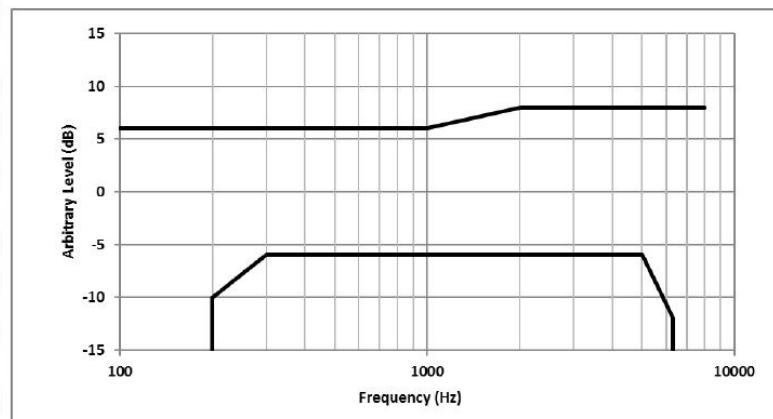
Lower Limit Frequency (Hz)	Lower Limit (dB)	Upper Limit Frequency (Hz)	Upper Limit (dB)
300	-6	100	+6
3400	-6	4000	+6



2. Wideband: The 1/12 octave band frequency response after translation to the FF or DF shall fall between the upper and lower limits given in Table 2 and shown in Figure below.

Table 2 – Wideband Receive Frequency Response Limits

Lower Limit Frequency (Hz)	Lower Limit (dB)	Upper Limit Frequency (Hz)	Upper Limit (dB)
200	-10	100	+6
300	-6	1000	+6
5000	-6	2000	+8
6300	-12	8000	+8



6.3.2 Method of Measurement

1. Configure the DUT with a mounting force of 8N and test equipment as shown in Figure 1 in an active call state with the applicable codec for the transmission mode under test with the volume control at the setting determined in 5.1.1.
2. If the DUT has an adjustable tone control feature the initial measurement is to be performed with the default tone control setting.
3. Apply the real speech test signal with a level of -20 dBm0 at the RETP.
4. Capture the frequency spectrum at the DRP of the HATS using real-time analysis with 1/12 octave bands over the frequency range from 100 Hz to 4000 Hz for narrowband measurements, or over the frequency range from 100 Hz to 8000 Hz for wideband measurements, averaged over the entire duration of the test signal.
5. Transform the DRP frequency spectrum measurement to the FF or DF (see Annex B).
6. Divide the 1/12 octave measurement data by the 1/12 octave frequency spectrum of the test signal at the RETP and present the measurement in terms of dB(Pa/V).
7. Apply the applicable frequency response limits to determine compliance.
8. If the default tone control setting does not meet the requirement, repeat the above steps for other tone control settings to determine a tone control setting that meets the requirements.
9. Repeat with a mounting force of 2N.

6.3.3 Test Result

Refer to test Annex A.

Remark: The report only reflects the test data plots of worst mode (for GSM 850, WCDMA Band 2, LTE Band 2)

6.3.4 Test Conclusion

PASS.

7. Test Equipment List

Description	Manufacturer	Model	Internal number	Cal. Date	Cal. Due
WIDEBAND RADIO COMMUNICATION TESTER	ROHDE&SCHWARZ	CMW500	BTF-EM-023	2024/10/25	2025/10/24
Conditioning Amplifier	Brule&Kjaer	Type -2690--030	BTF-EM- 146	2025/2/11	2026/2/10
Head and Torso Simulator	Brule&Kjaer	Type 4128C	BTF-EM- 148	2025/2/11	2026/2/10
Sound Calibration	Brule&Kjaer	Type 4231	BTF-EM- 149	2025/2/08	2026/2/07
Anechoic Test Chamber	MEC	Type 115	BTF-EM- 150	N/A	N/A

8. Air Interfaces / Bands used for testing

Air-interface	Band	Tested Codec	Tested Rate(kbps)
GSM	850/1900	EFR	/
WCDMA(UMTS)	Band 2/4/5	AMR-NB	4.75/12.2
		AMR-WB	6.6/23.85
		EVS-NB	5.9/24.4
		EVS-WB	5.9/24.4
VoLTE	Band 2/4/5/12/17/41/66/71	AMR-NB	4.75/12.2
		AMR-WB	6.6/23.85
		EVS-NB	5.9/24.4
		EVS-WB	5.9/24.4
VoWIFI	2.4G	AMR-NB	4.75/12.2
		AMR-WB	6.6/23.85
		EVS-NB	5.9/24.4
		EVS-WB	5.9/24.4
Note:We only select one codec type for the test, narrowband and wideband.			

9. Test Result

9.1 Receive volume control, distortion and noise performance

Plot No.	Mode	Channel/Freq.	BW	Codec B itrate	Volume Level	Codec Type	Codec Ba ndwidth	Mounting Force (N)	Freque ncy(HZ)	Min PN-S DNR(dB)	PN-SDNR Limb(dB)	Signal Qu ality (dB)	Conversa tional Gai n	FCC CG Limit (dB)	Result
1	GSM850	190/836.6MHz	/	/	Max	EFR	NB	8N	2500	20.90	20.00	92.56	22.56	6.00	Pass
			/	/	Max	EFR	NB	2N	3150	20.63	20.00	90.24	20.24	6.00	
2	PCS1900	512/1850.2MHz	/	/	Max	EFR	NB	8N	3150	22.08	20.00	93.45	23.45	6.00	Pass
			/	/	Max	EFR	NB	2N	3150	23.11	20.00	91.65	21.65	6.00	
3	WCDMA Band II	9262/1852.4MHz	/	12.20	Max	AMR	NB	8N	500	24.85	20.00	91.55	21.55	6.00	Pass
			/	12.20	Max	AMR	NB	2N	3150	24.02	20.00	90.25	20.25	6.00	
			/	23.85	Max	AMR	WB	8N	5000	20.32	20.00	86.85	16.85	6.00	
			/	23.85	Max	AMR	WB	2N	5000	20.36	20.00	83.62	13.62	6.00	
4	WCDMA Band IV	1312/1712.4MHz	/	12.20	Max	AMR	NB	8N	3150	23.49	20.00	93.49	23.49	6.00	Pass
			/	12.20	Max	AMR	NB	2N	3150	23.32	20.00	92.67	22.67	6.00	
			/	23.85	Max	AMR	WB	8N	5000	22.58	20.00	90.68	20.68	6.00	
			/	23.85	Max	AMR	WB	2N	5000	22.64	20.00	90.31	20.31	6.00	
5	WCDMA Band V	4132/826.4MHz	/	12.20	Max	AMR	NB	8N	3150	24.74	20.00	93.57	23.57	6.00	Pass
			/	12.20	Max	AMR	NB	2N	3150	24.36	20.00	93.22	23.22	6.00	
			/	23.85	Max	AMR	WB	8N	5000	23.81	20.00	91.31	21.31	6.00	
			/	23.85	Max	AMR	WB	2N	5000	23.55	20.00	91.04	21.04	6.00	
6	LTE FDD Band 2	18700/1860.0MHz	20MHz_QPSK_1_50	12.20	Max	AMR	NB	8N	3150	24.31	20.00	89.13	19.13	6.00	Pass
				12.20	Max	AMR	NB	2N	3150	24.15	20.00	88.40	18.40	6.00	
				23.85	Max	AMR	WB	8N	5000	20.06	20.00	88.44	18.44	6.00	
				23.85	Max	AMR	WB	2N	5000	20.75	20.00	88.93	18.93	6.00	
7	LTE FDD Band 4	20300/1745.0MHz	20MHz_QPSK_1_50	12.20	Max	AMR	NB	8N	3150	25.67	20.00	91.65	21.65	6.00	Pass
				12.20	Max	AMR	NB	2N	3150	26.11	20.00	92.08	22.08	6.00	
				23.85	Max	AMR	WB	8N	5000	23.42	20.00	91.34	21.34	6.00	
				23.85	Max	AMR	WB	2N	5000	23.21	20.00	91.09	21.09	6.00	
8	LTE FDD Band 5	20450/829.0MHz	10MHz_QPSK_1_0	12.20	Max	AMR	NB	8N	3150	23.67	20.00	93.32	23.32	6.00	Pass
				12.20	Max	AMR	NB	2N	3150	23.31	20.00	93.10	23.10	6.00	
				23.85	Max	AMR	WB	8N	5000	22.19	20.00	92.64	22.64	6.00	
				23.85	Max	AMR	WB	2N	5000	22.34	20.00	92.35	22.35	6.00	
9	LTE FDD Band 12	23095/707.5MHz	10MHz_QPSK_1_25	12.20	Max	AMR	NB	8N	3150	23.48	20.00	92.57	22.57	6.00	Pass
				12.20	Max	AMR	NB	2N	3150	23.19	20.00	92.16	22.16	6.00	
				23.85	Max	AMR	WB	8N	5000	22.71	20.00	91.94	21.94	6.00	
				23.85	Max	AMR	WB	2N	5000	22.64	20.00	91.67	21.67	6.00	
10	LTE FDD Band 17	23800/711.0MHz	10MHz_QPSK_1_25	12.20	Max	AMR	NB	8N	3150	25.16	20.00	94.56	24.56	6.00	Pass
				12.20	Max	AMR	NB	2N	3150	24.84	20.00	94.37	24.37	6.00	
				23.85	Max	AMR	WB	8N	5000	22.40	20.00	92.61	22.61	6.00	
				23.85	Max	AMR	WB	2N	5000	22.38	20.00	92.40	22.40	6.00	

Plot No.	Mode	Channel/Freq.	BW	Codec B ltrate	Volume Level	Codec Ty pe	Codec Ba ndwidth	Mounting Force (N)	Freque ncy(H Z)	Min PN-S DNR(dB)	PN-SDNR Limb(dB)	Signal Qu ality (dB)	Conversa tional Gai n	FCC CG Limit (dB)	Result
11	LTE TDD Band 41	41490/2680.0MHz	20MHz_QPSK_1_50	12.20	Max	AMR	NB	8N	3150	23.16	20.00	93.59	23.59	6.00	Pass
				12.20	Max	AMR	NB	2N	3150	22.87	20.00	93.31	23.31	6.00	
				23.85	Max	AMR	WB	8N	5000	21.65	20.00	90.97	20.97	6.00	
				23.85	Max	AMR	WB	2N	5000	21.38	20.00	90.66	20.66	6.00	
12	LTE FDD Band 66	132572/1770MHz	20MHz_QPSK_1_50	12.20	Max	AMR	NB	8N	3150	23.95	20.00	92.38	22.38	6.00	Pass
				12.20	Max	AMR	NB	2N	3150	23.66	20.00	92.07	22.07	6.00	
				23.85	Max	AMR	WB	8N	5000	20.89	20.00	91.54	21.54	6.00	
				23.85	Max	AMR	WB	2N	5000	20.96	20.00	91.30	21.30	6.00	
13	LTE FDD Band 71	133372/688.0MHz	20MHz_QPSK_1_50	12.20	Max	AMR	NB	8N	3150	25.22	20.00	93.95	23.95	6.00	Pass
				12.20	Max	AMR	NB	2N	3150	25.10	20.00	93.67	23.67	6.00	
				23.85	Max	AMR	WB	8N	5000	22.54	20.00	92.18	22.18	6.00	
				23.85	Max	AMR	WB	2N	5000	22.22	20.00	92.06	22.06	6.00	

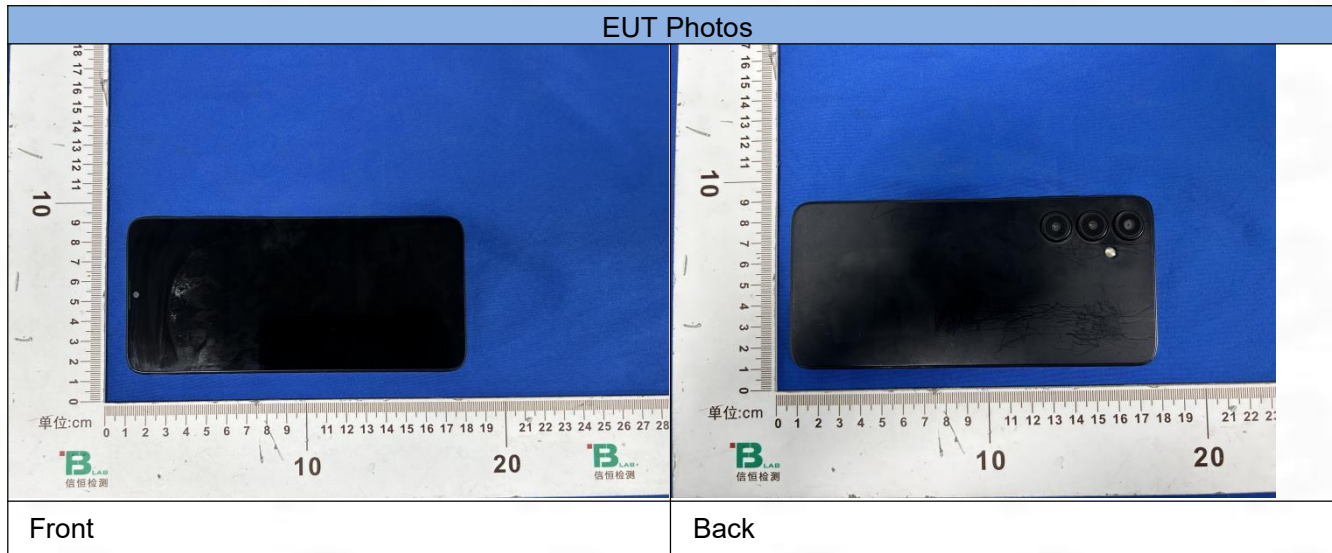
Note:

- 1.This device does not support VoWIFI, so VoWIFI is not tested and evaluated.
- 2.With a mounting force of 8N, the DUT shall have at least one volume control setting that will produce a conversational gain of ≥ 6 dB with the output distortion and the frequency response.
- 3.With a mounting force of 2N, the DUT shall have at least one volume control setting that will produce a conversational gain of ≥ 6 dB with the output distortion and the frequency response.
- 4.With a mounting force of 8N and 2N, the ratio of the stimulus signal power to the 100 Hz to 8000 Hz total A-weighted distortion and noise power shall be ≥ 20 dB.
- 5.We only select one codec type for the test, narrowband and wideband.

9.2 Receive acoustic frequency response performance

Plot No.	Mode	Channel/Freq.	BW	Volume Level	Codec Type	Codec Bandwidth	Mounting Force (N)	RFR
								Test Result
1	GSM850	190/836.6MHz	/	Max	EFR	NB	2N	Pass
				Max	EFR	NB	8N	
2	PCS1900	512/1850.2MHz	/	Max	EFR	NB	2N	Pass
				Max	EFR	NB	8N	
3	WCDMA Band II	9262/1852.4MHz	/	Max	AMR	NB	2N	Pass
				Max	AMR	NB	8N	
				Max	AMR	WB	2N	
				Max	AMR	WB	8N	
4	WCDMA Band IV	1312/1712.4MHz	/	Max	AMR	NB	2N	Pass
				Max	AMR	NB	8N	
				Max	AMR	WB	2N	
				Max	AMR	WB	8N	
5	WCDMA Band V	4132/826.4MHz	/	Max	AMR	NB	2N	Pass
				Max	AMR	NB	8N	
				Max	AMR	WB	2N	
				Max	AMR	WB	8N	
6	LTE FDD Band 2	18700/1860.0MHz	20MHz_QPSK_1_50	Max	AMR	NB	2N	Pass
				Max	AMR	NB	8N	
				Max	AMR	WB	2N	
				Max	AMR	WB	8N	
7	LTE FDD Band 4	20300/1745.0MHz	20MHz_QPSK_1_50	Max	AMR	NB	2N	Pass
				Max	AMR	NB	8N	
				Max	AMR	WB	2N	
				Max	AMR	WB	8N	
8	LTE FDD Band 5	20450/829.0MHz	10MHz_QPSK_1_0	Max	AMR	NB	2N	Pass
				Max	AMR	NB	8N	
				Max	AMR	WB	2N	
				Max	AMR	WB	8N	
9	LTE FDD Band 12	23095/707.5MHz	10MHz_QPSK_1_25	Max	AMR	NB	2N	Pass
				Max	AMR	NB	8N	
				Max	AMR	WB	2N	
				Max	AMR	WB	8N	
10	LTE FDD Band 17	23800/711.0MHz	10MHz_QPSK_1_25	Max	AMR	NB	2N	Pass
				Max	AMR	NB	8N	
				Max	AMR	WB	2N	
				Max	AMR	WB	8N	
11	LTE TDD Band 41	41490/2680.0MHz	20MHz_QPSK_1_50	Max	AMR	NB	2N	Pass
				Max	AMR	NB	8N	
				Max	AMR	WB	2N	
				Max	AMR	WB	8N	
12	LTE FDD Band 66	132572/1770MHz	20MHz_QPSK_1_50	Max	AMR	NB	2N	Pass
				Max	AMR	NB	8N	
				Max	AMR	WB	2N	
				Max	AMR	WB	8N	
13	LTE FDD Band 71	133372/688.0MHz	20MHz_QPSK_1_50	Max	AMR	NB	2N	Pass
				Max	AMR	NB	8N	
				Max	AMR	WB	2N	
				Max	AMR	WB	8N	

10. EUT photograph



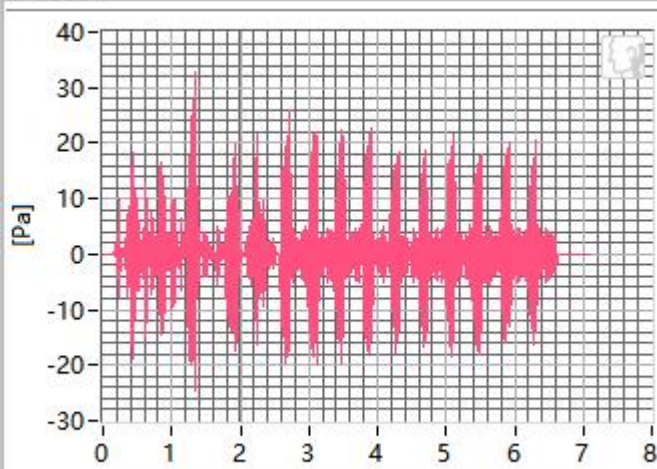
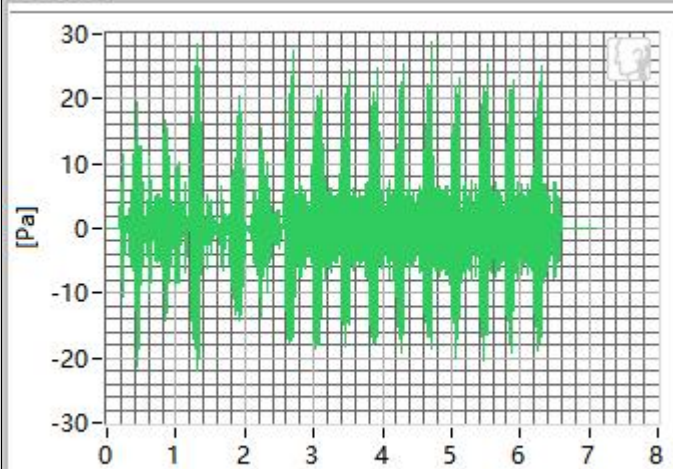
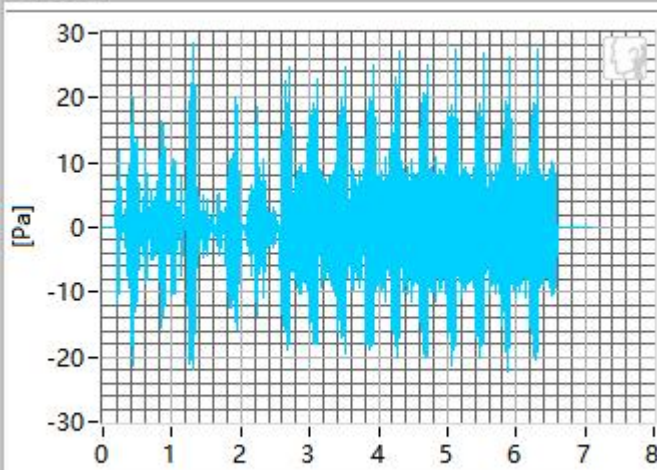
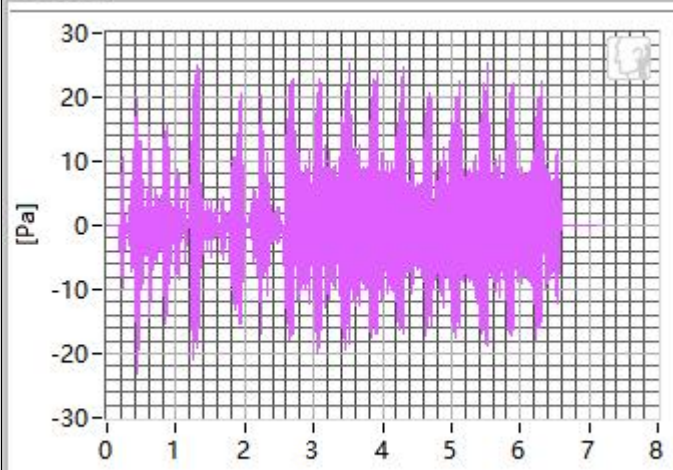
Volume Control Verification Test Results

Date of Testing	Test Location	Air Interface Equipment	Acoustical Calibrator	HATS Sens.(dB)	Ambient Noise(dBA)
7/8/2025	JB HATS R	CMW 500	B&K 4231 & UA1546	97.17	35.57
8/8/2025	JB HATS R	CMW 500	B&K 4231 & UA1546	97.12	33.65
9/8/2025	JB HATS R	CMW 500	B&K 4231 & UA1546	97.16	32.28
10/8/2025	JB HATS R	CMW 500	B&K 4231 & UA1546	97.13	34.48
Note: A room with background noise no greater than 40 dBA.					

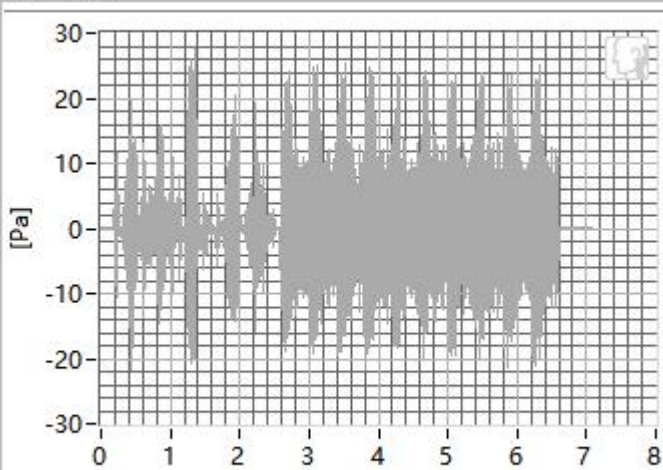
ANNEX A Test Data

1. GSM 850 in channel 190

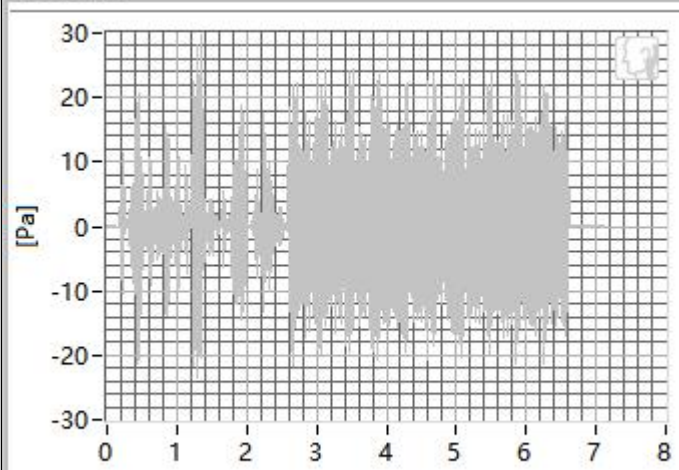
1.1 Receive Distortion and Noise 8N NB

400Hz**500Hz****630Hz****800Hz**

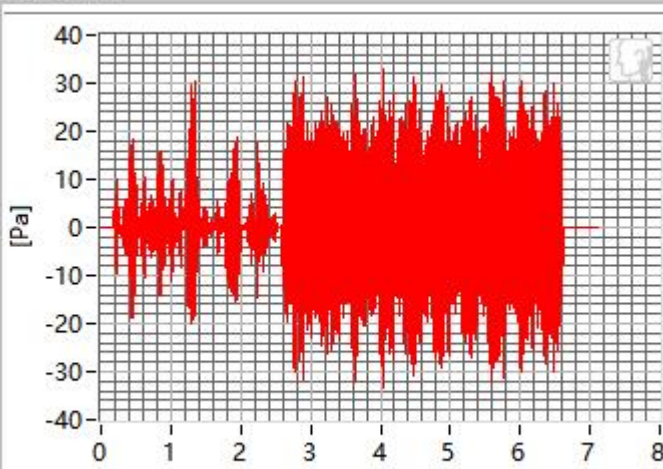
1000Hz



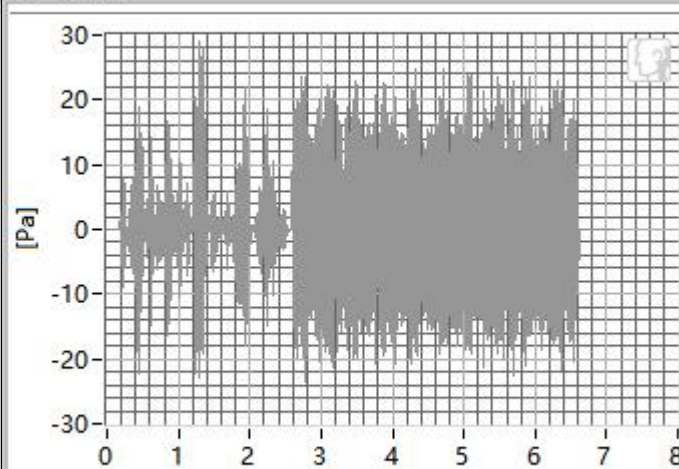
1250Hz



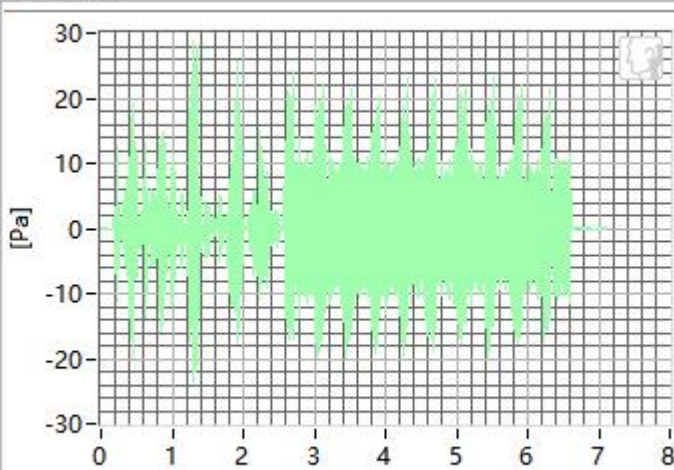
1600Hz



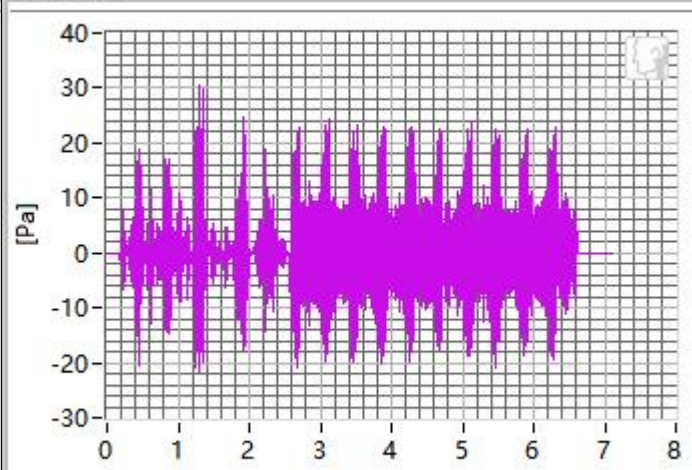
2000Hz



2500Hz



3150Hz

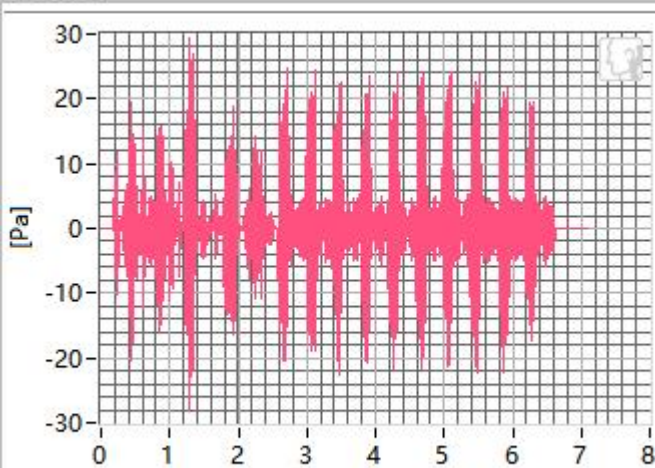


Frequency	SDNR	Frequency	SDNR
400Hz	25.75 dB	1250Hz	22.11 dB
500Hz	24.00 dB	1600Hz	26.54 dB
630Hz	25.34 dB	2000Hz	25.03 dB
800Hz	22.80 dB	2500Hz	20.90 dB
1000Hz	24.93 dB	3150Hz	21.31 dB

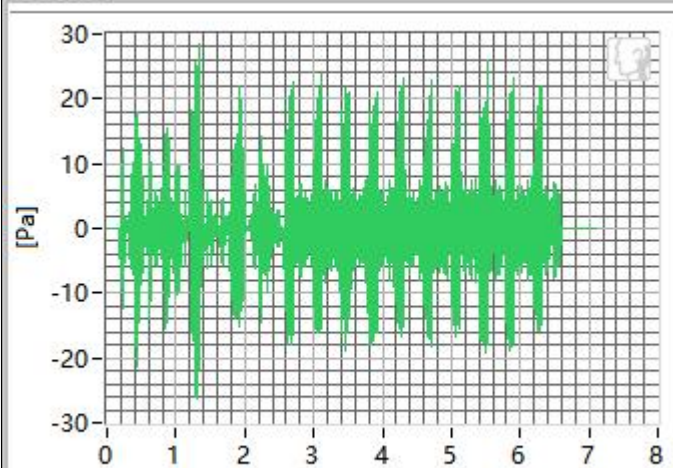
All SDNRs were greater than 20.0 dB, requirement was met. Smallest SDNR was 20.90 dB at 2500Hz.

1.2 Receive Distortion and Noise 2N NB

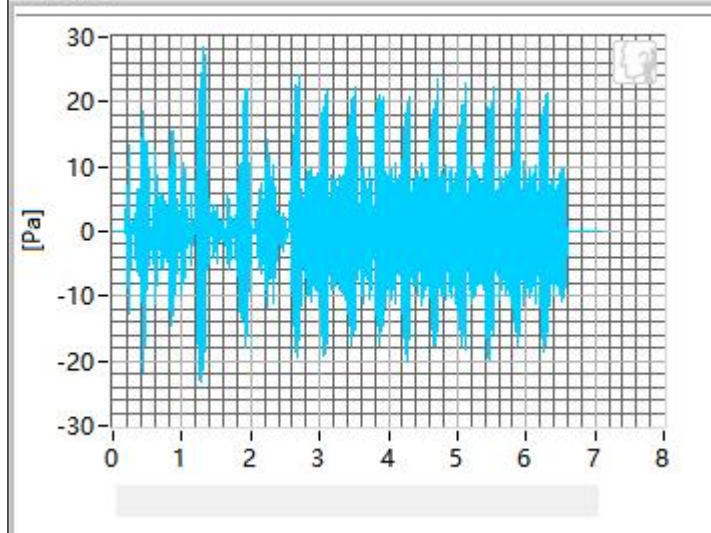
400Hz



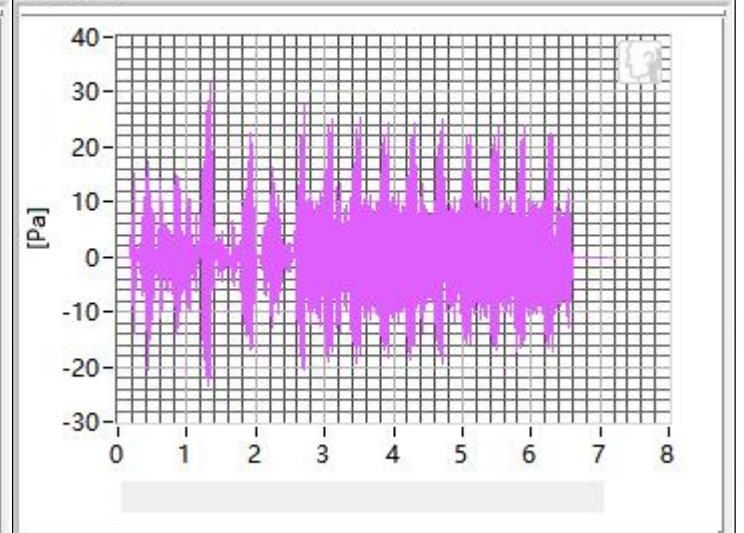
500Hz



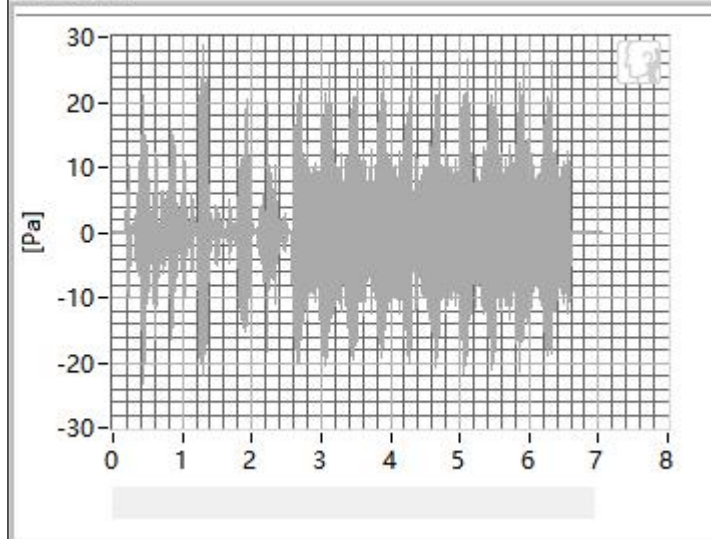
630Hz



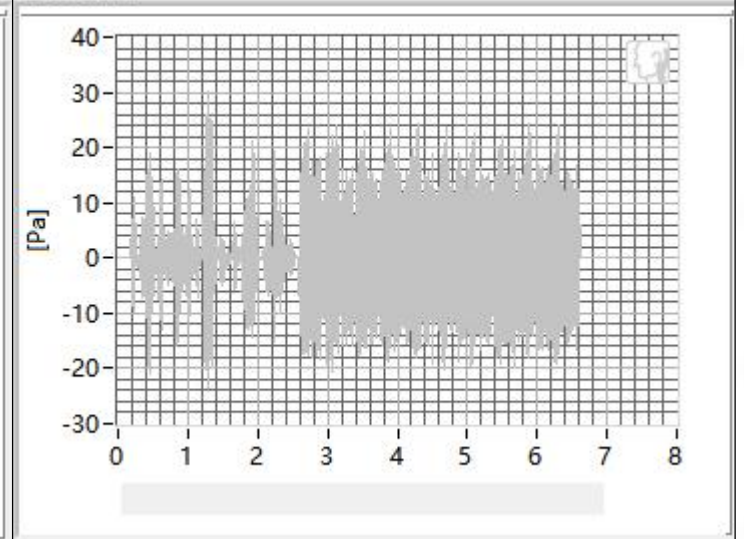
800Hz



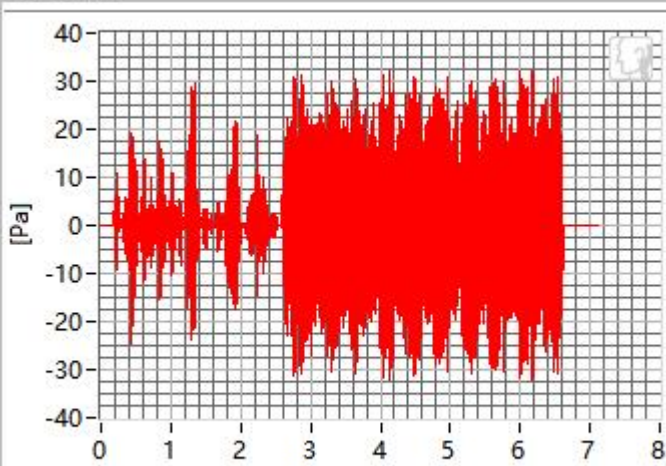
1000Hz



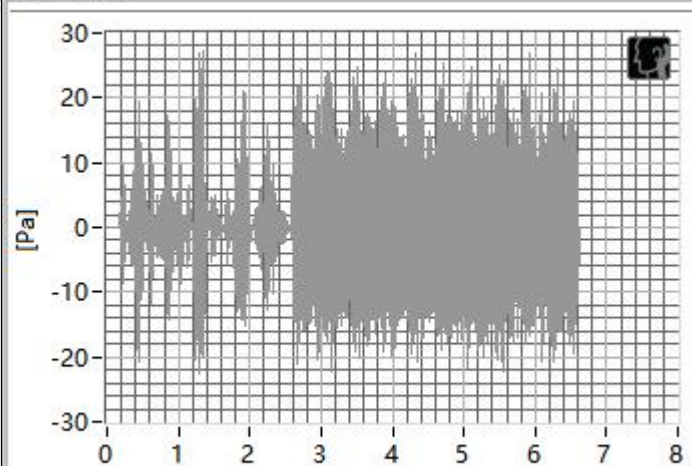
1250Hz



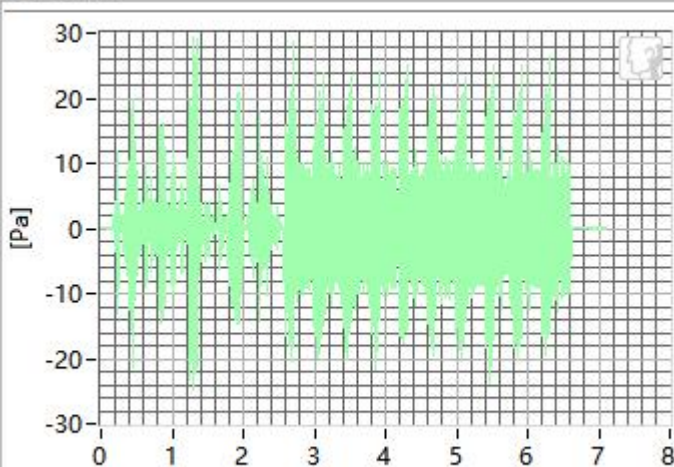
1600Hz



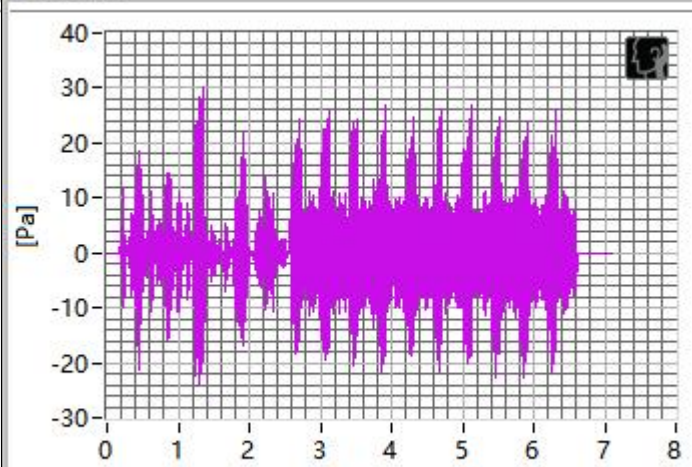
2000Hz



2500Hz



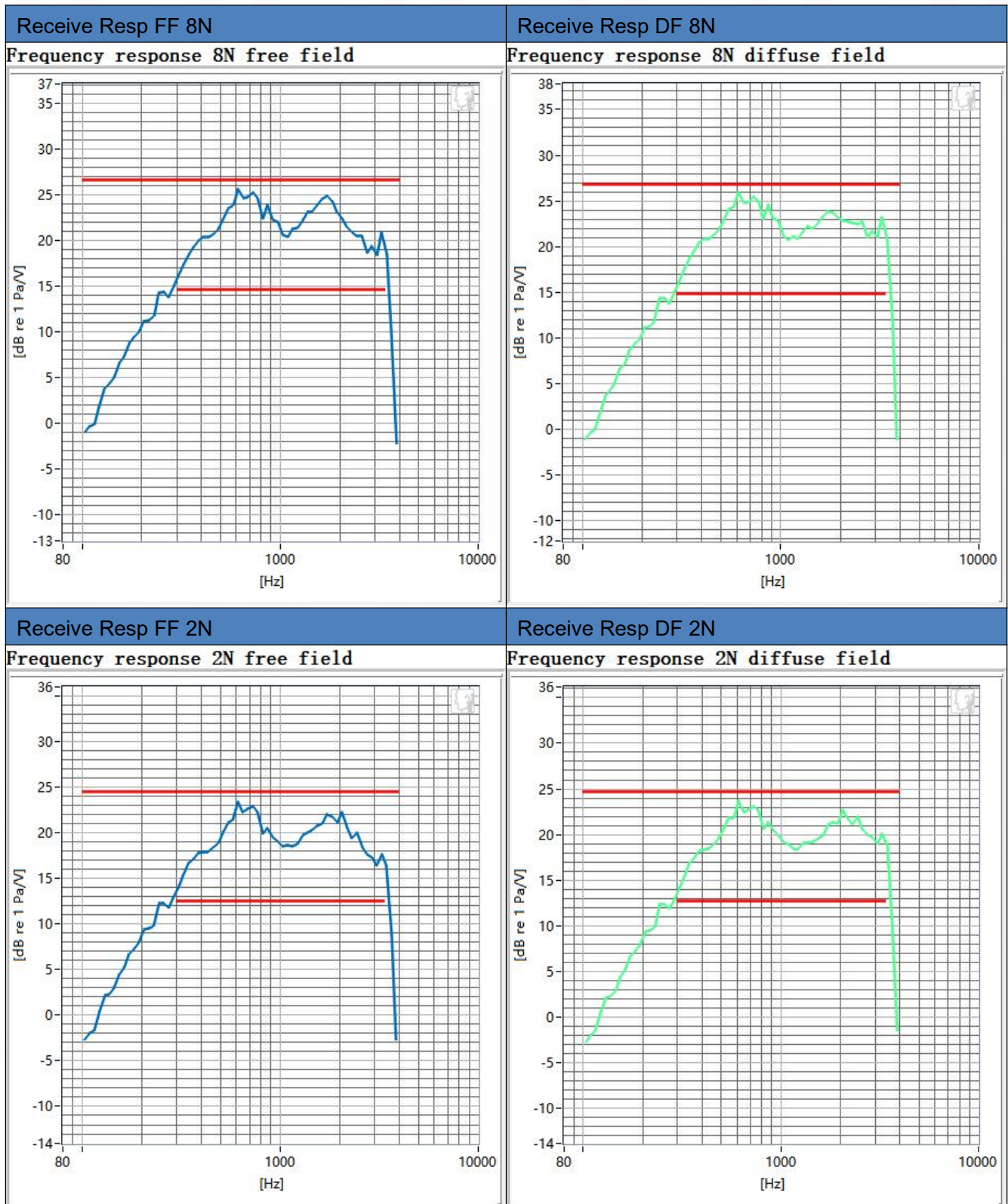
3150Hz



Frequency	SDNR	Frequency	SDNR
400Hz	25.60 dB	1250Hz	21.69 dB
500Hz	24.37 dB	1600Hz	24.48 dB
630Hz	25.27 dB	2000Hz	26.33 dB
800Hz	22.44 dB	2500Hz	21.71 dB
1000Hz	23.96 dB	3150Hz	20.63 dB

All SDNRs were greater than 20.0 dB, requirement was met. Smallest SDNR was 20.63 dB at 3150Hz.

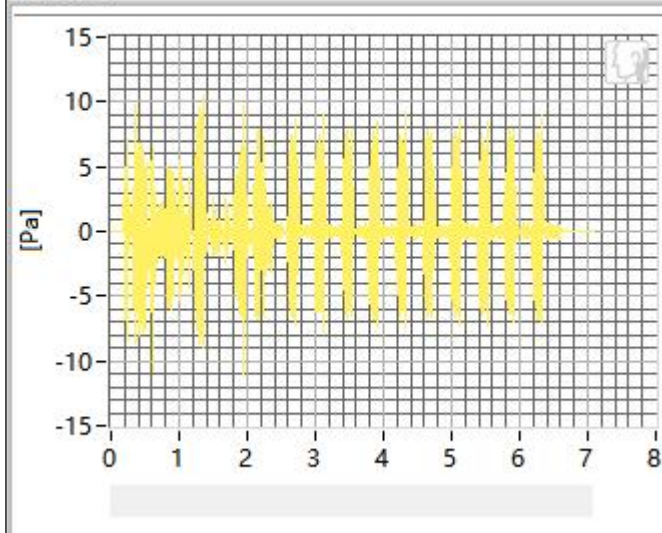
1.3 Receive Frequency Response



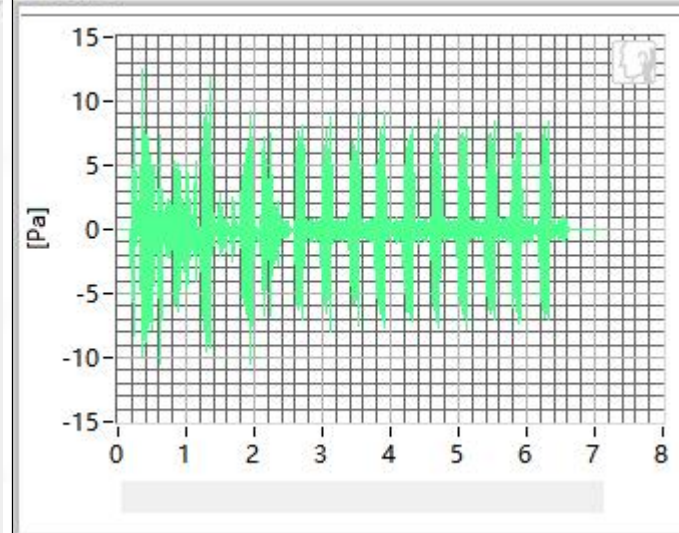
2. WCDMA band 2 in channel 9262

2.1 Receive Distortion and Noise 8N WB

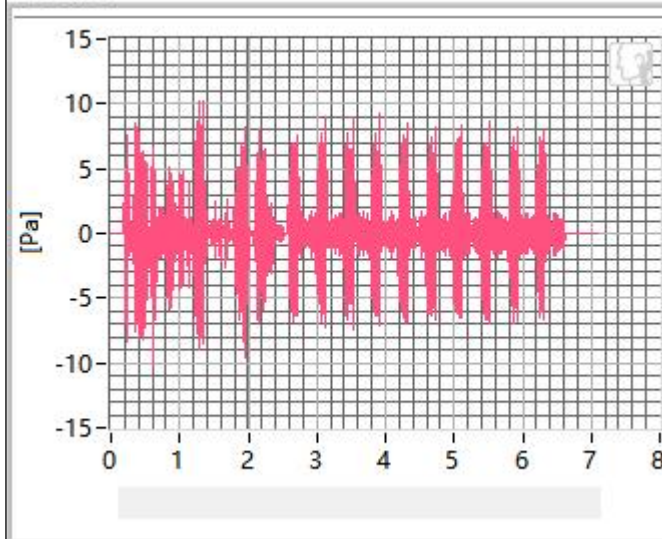
250Hz



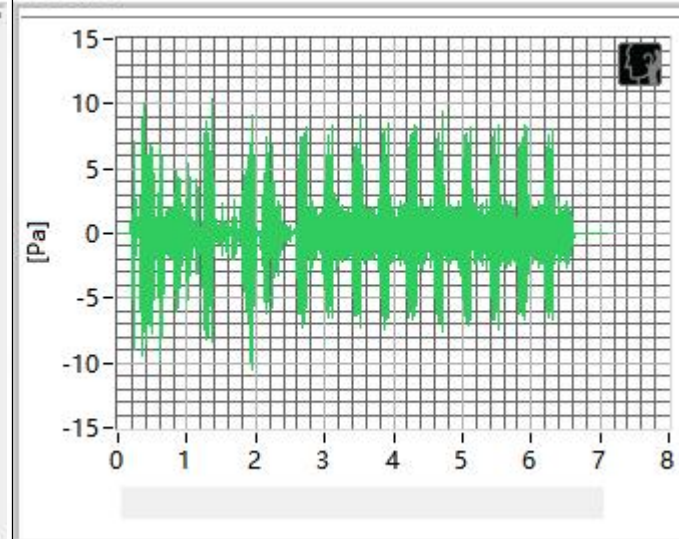
315Hz



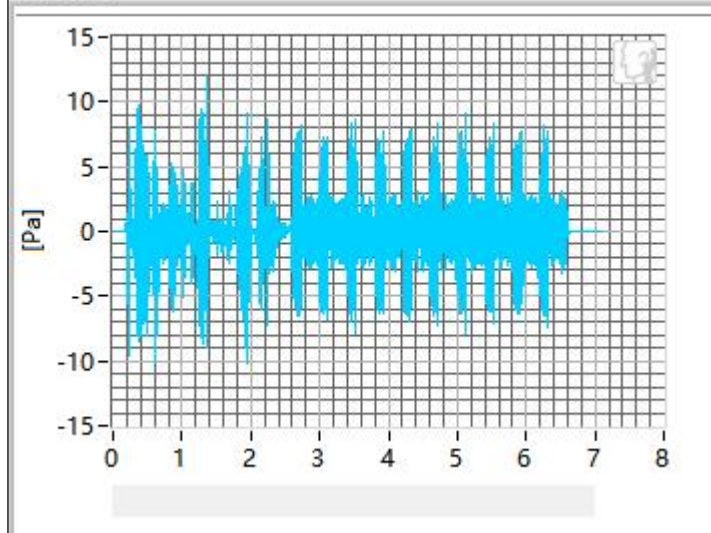
400Hz



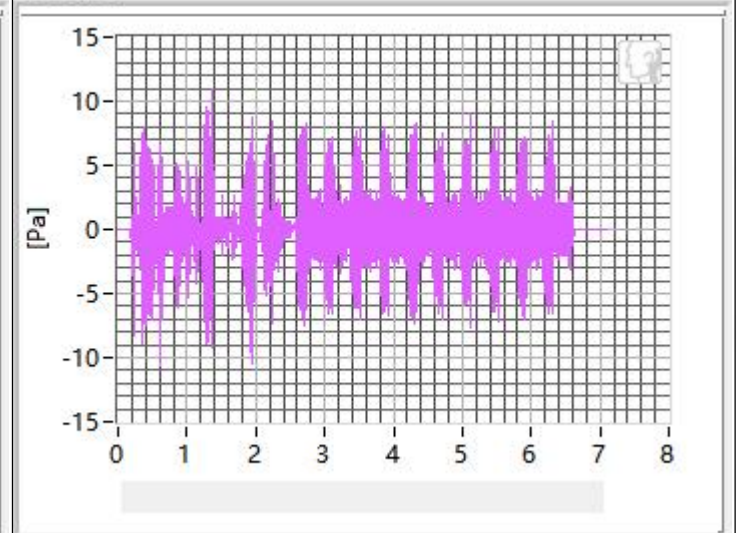
500Hz



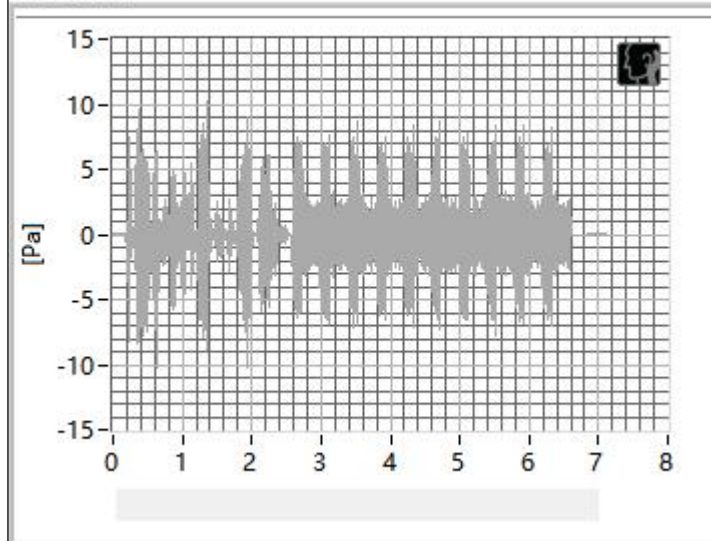
630Hz



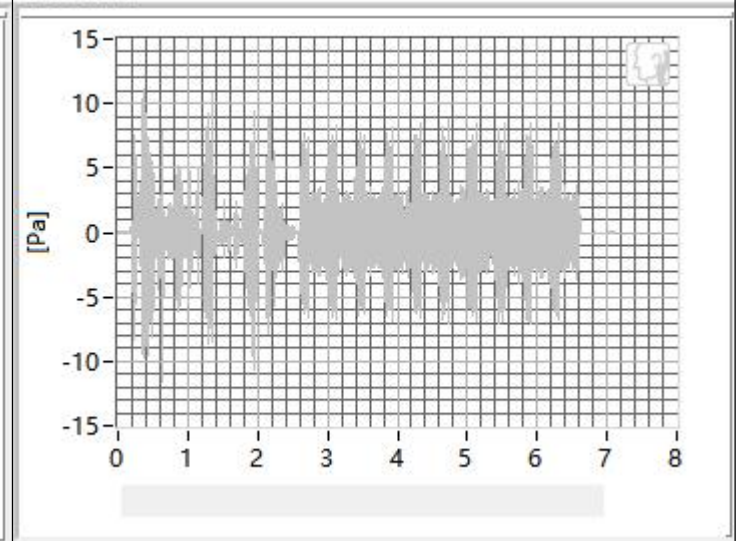
800Hz



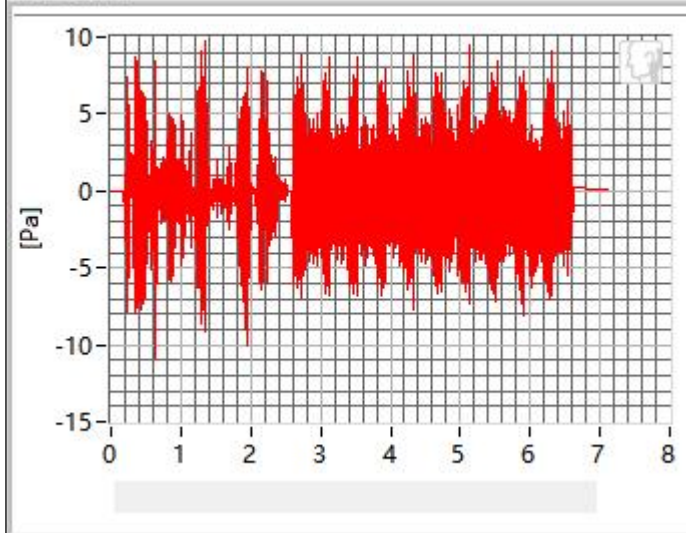
1000Hz



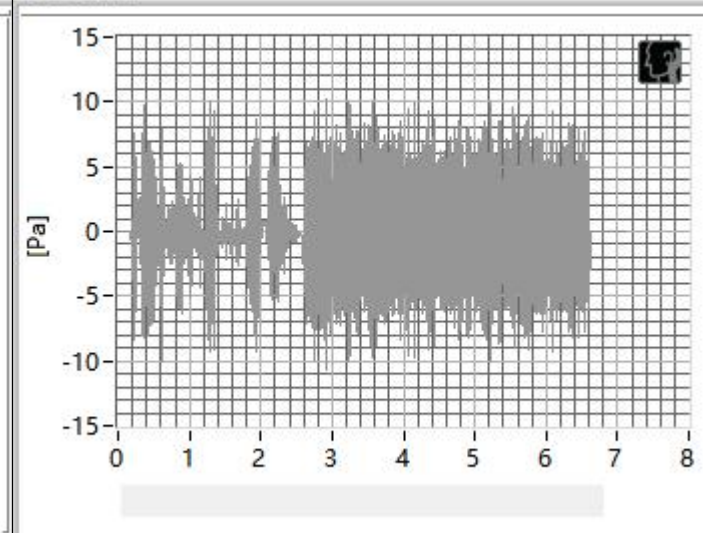
1250Hz



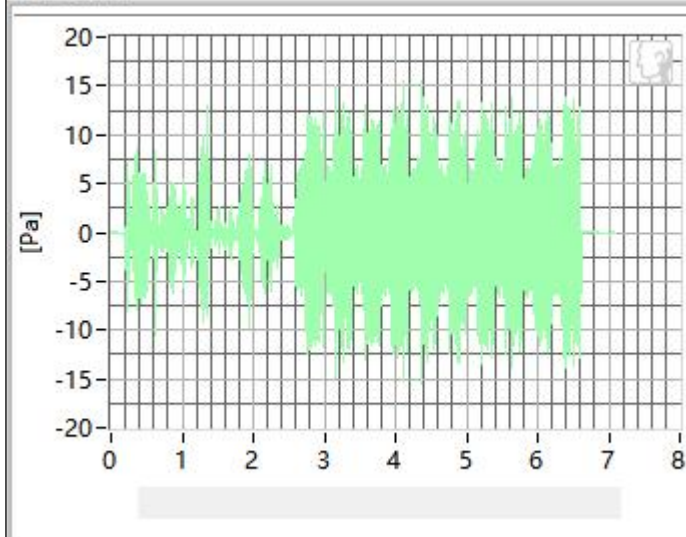
1600Hz



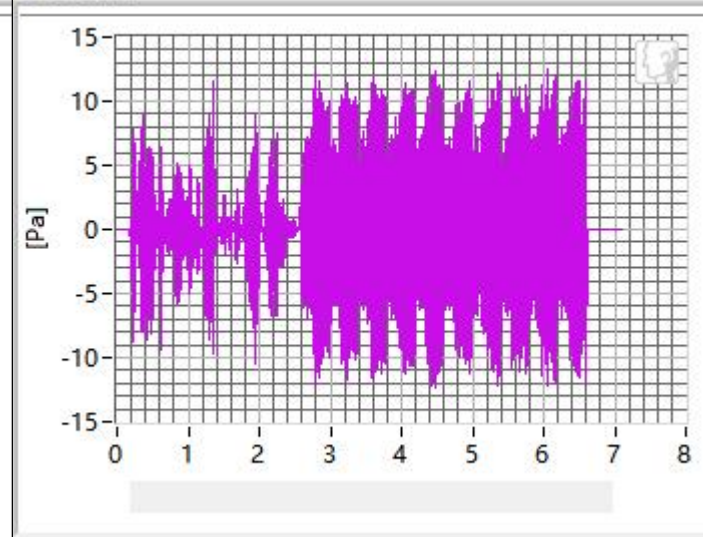
2000Hz



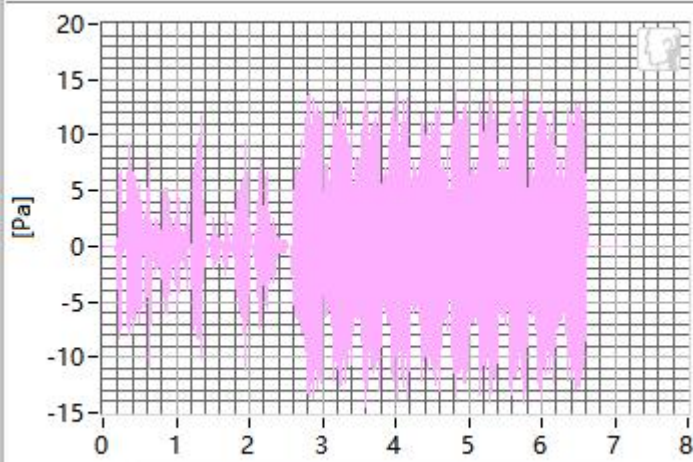
2500Hz



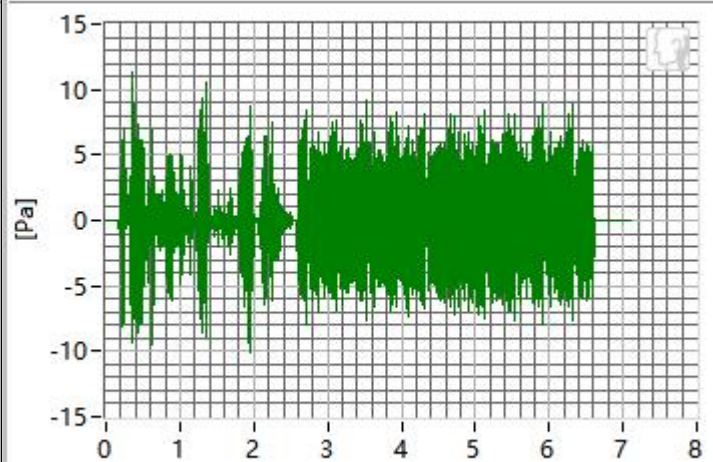
3150Hz



4000Hz



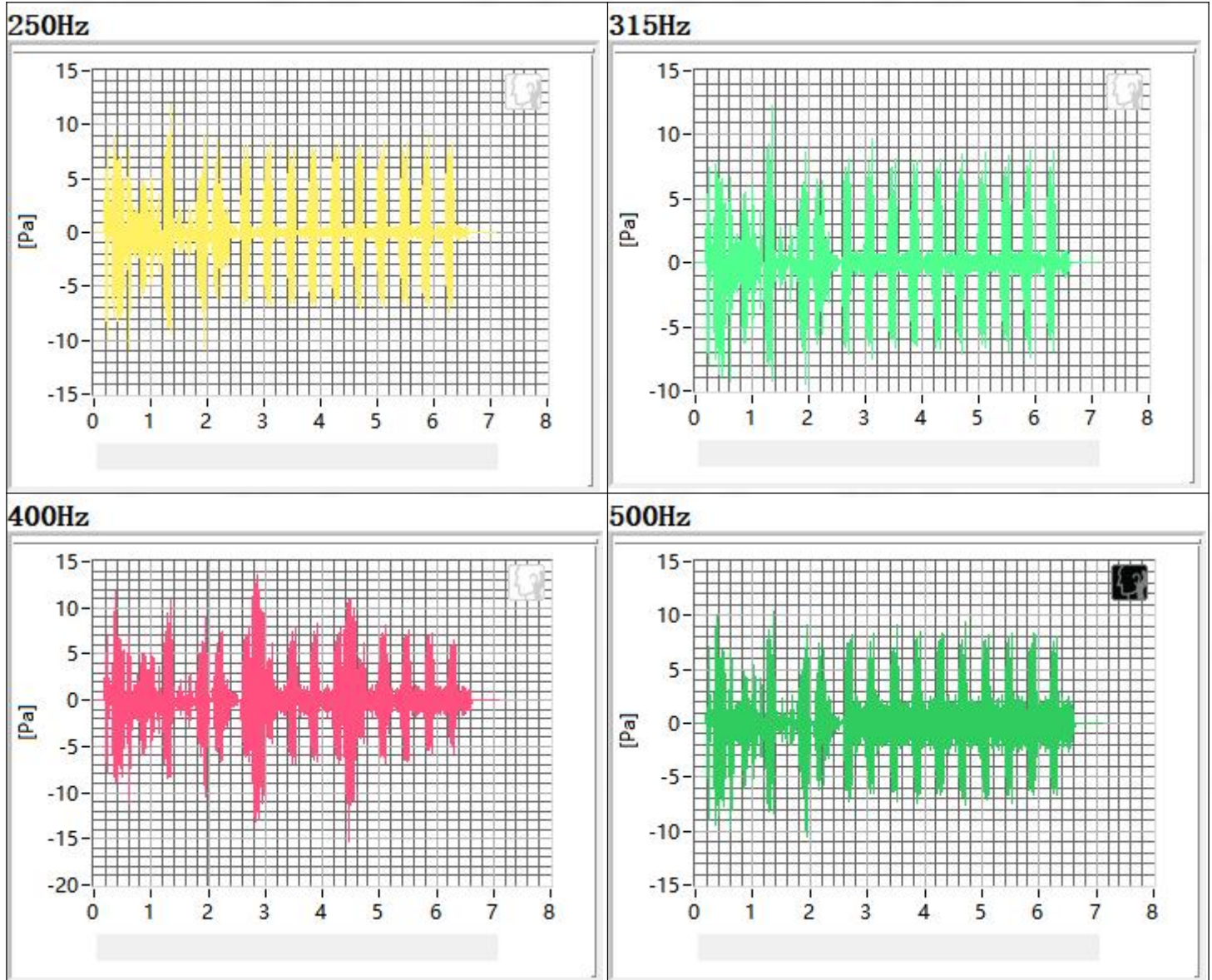
5000Hz

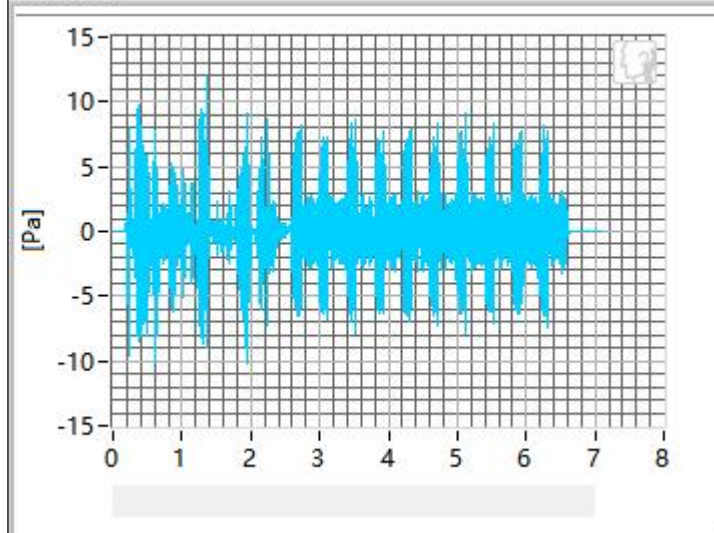
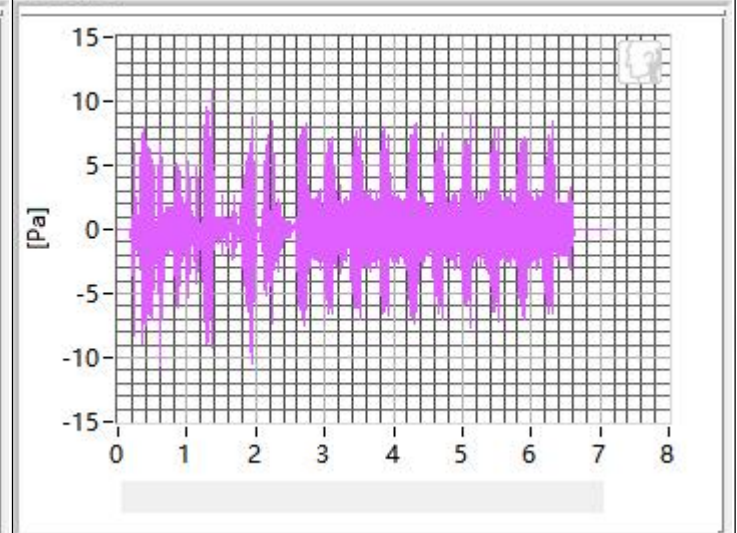
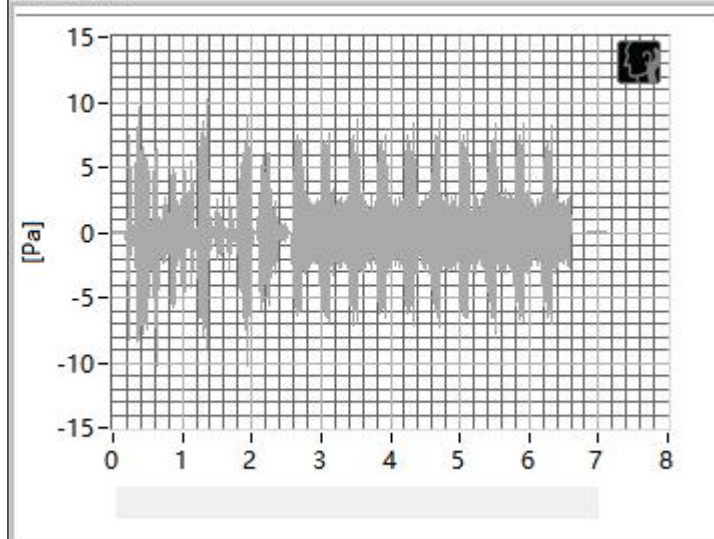
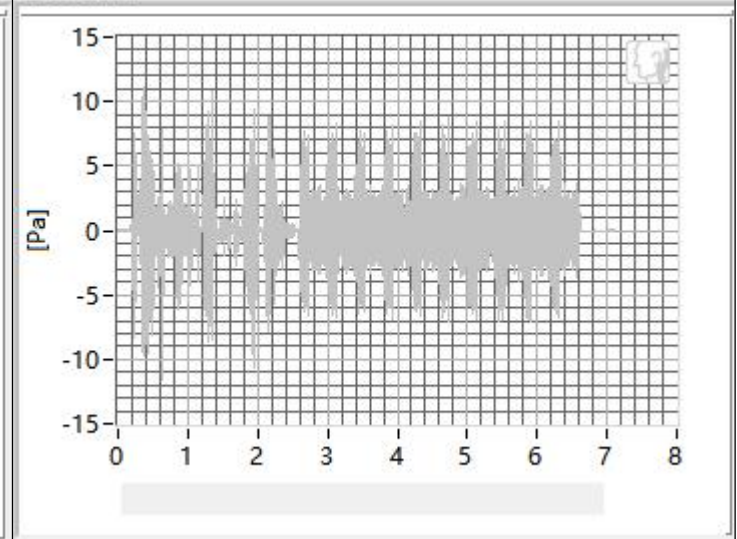


Frequency	SDNR	Frequency	SDNR
250Hz	26.78 dB	1250Hz	23.10 dB
315Hz	25.93 dB	1600Hz	27.59 dB
400Hz	26.79 dB	2000Hz	20.76 dB
500Hz	26.13 dB	2500Hz	24.16 dB
630Hz	26.32 dB	3150Hz	30.01 dB
800Hz	27.81 dB	4000Hz	20.58 dB
1000Hz	27.69 dB	5000Hz	20.32 dB

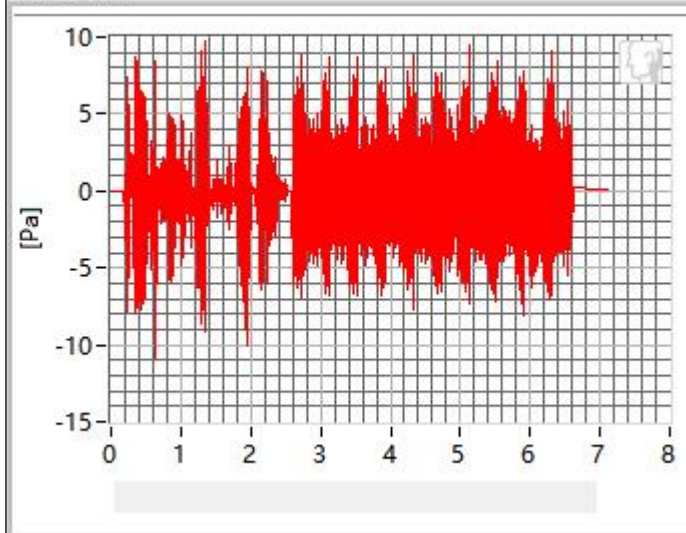
All SDNRs were greater than 20.0 dB, requirement was met. Smallest SDNR was 20.32 dB at 5000Hz.

2.2 Receive Distortion and Noise 2N WB

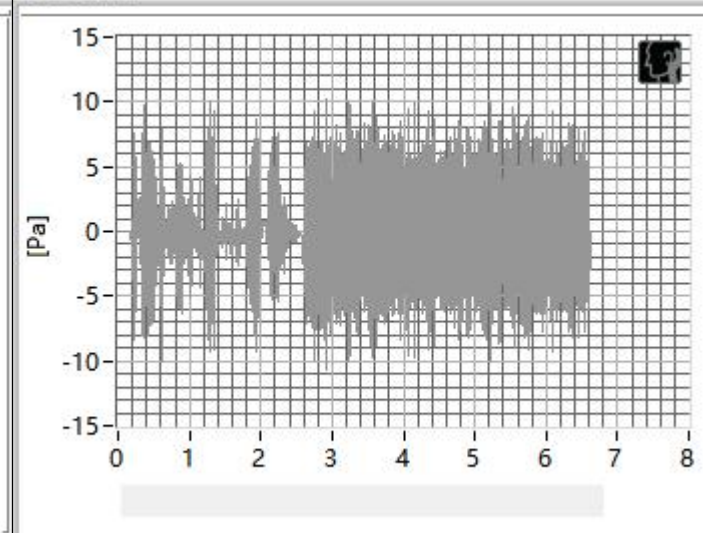


630Hz**800Hz****1000Hz****1250Hz**

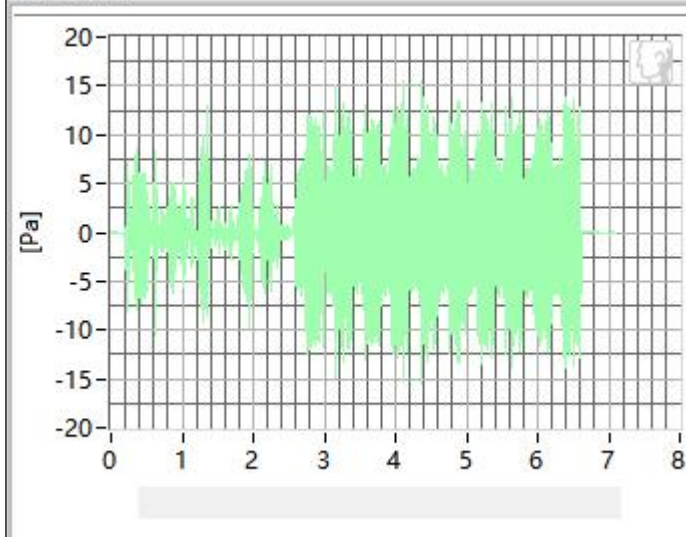
1600Hz



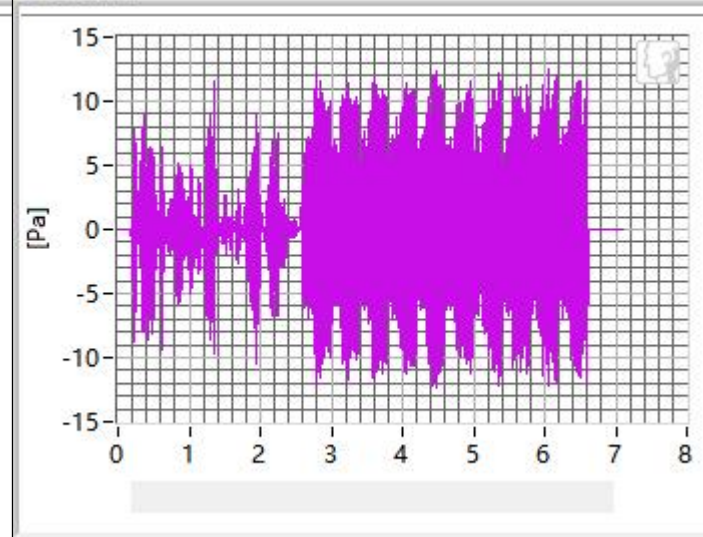
2000Hz



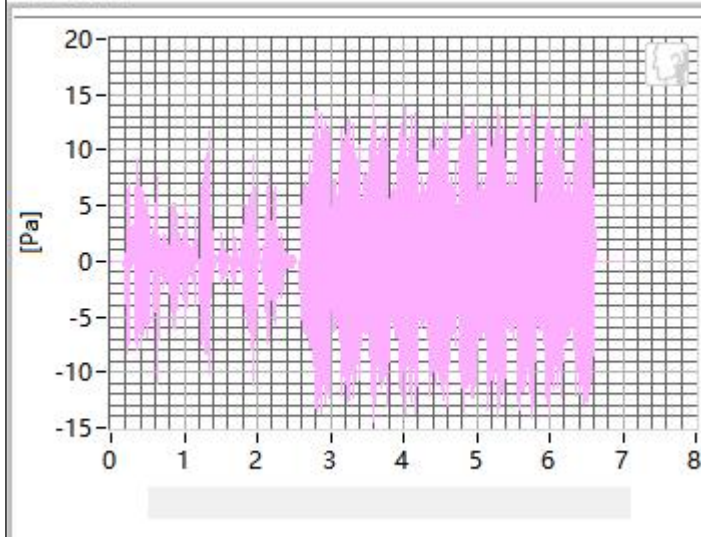
2500Hz



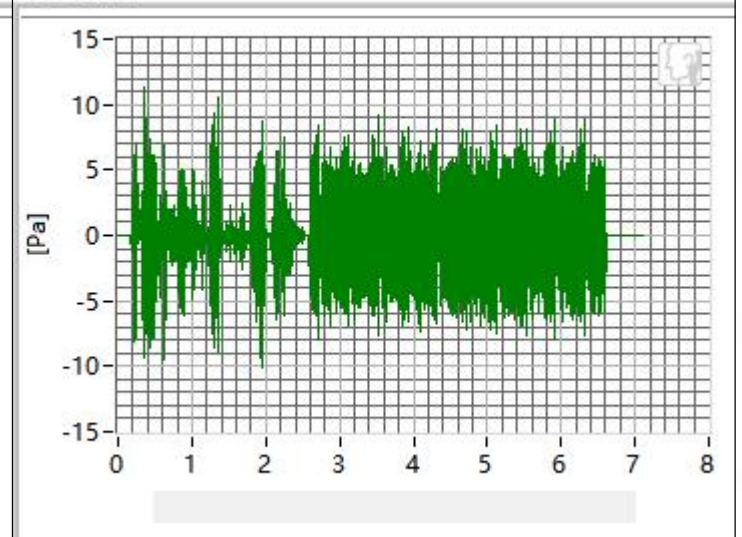
3150Hz



4000Hz



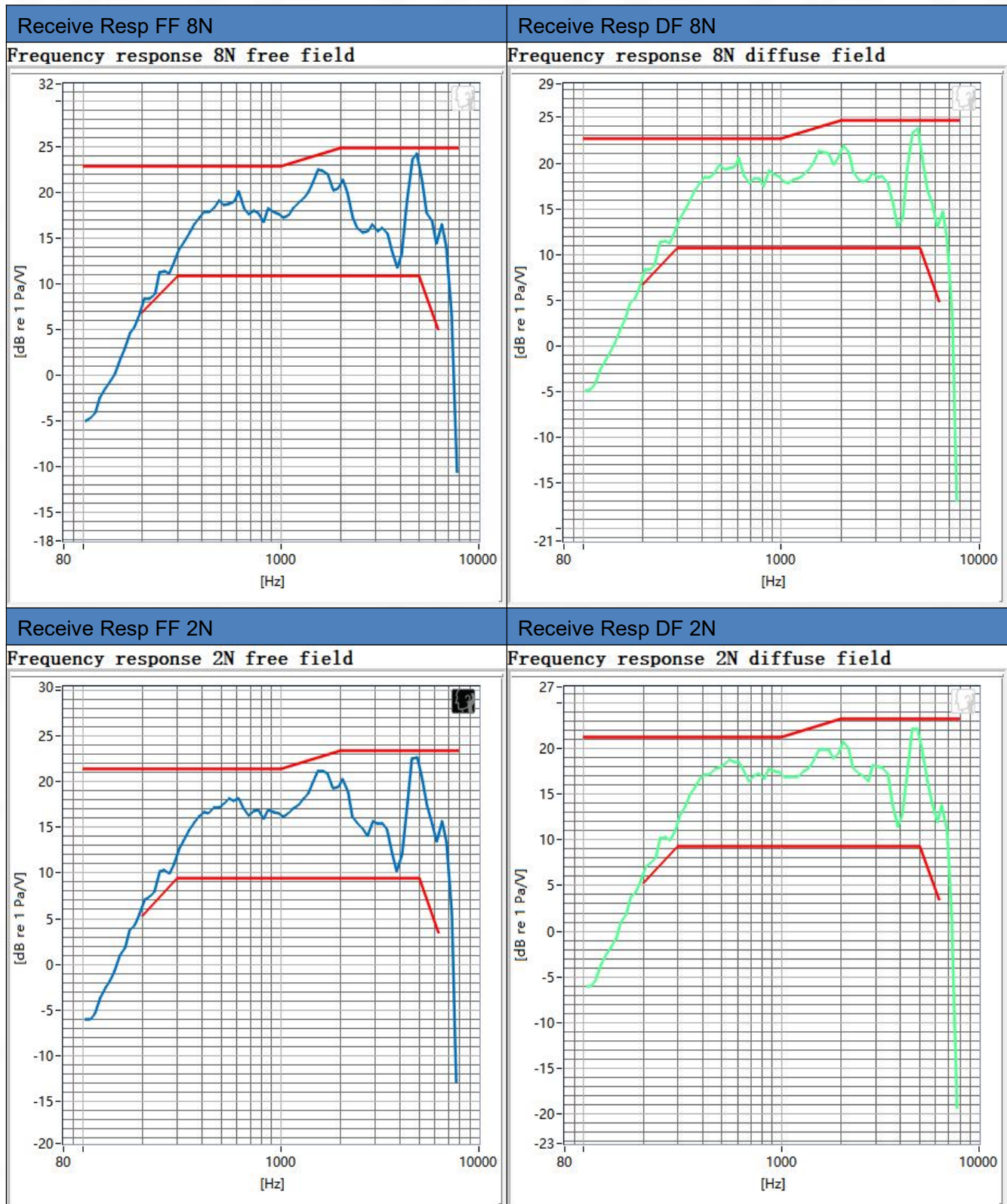
5000Hz



Frequency	SDNR	Frequency	SDNR
250Hz	27.30 dB	1250Hz	23.02 dB
315Hz	27.07 dB	1600Hz	26.61 dB
400Hz	26.99 dB	2000Hz	21.88 dB
500Hz	26.54 dB	2500Hz	24.08 dB
630Hz	26.58 dB	3150Hz	29.08 dB
800Hz	27.73 dB	4000Hz	20.99 dB
1000Hz	28.52 dB	5000Hz	20.36 dB

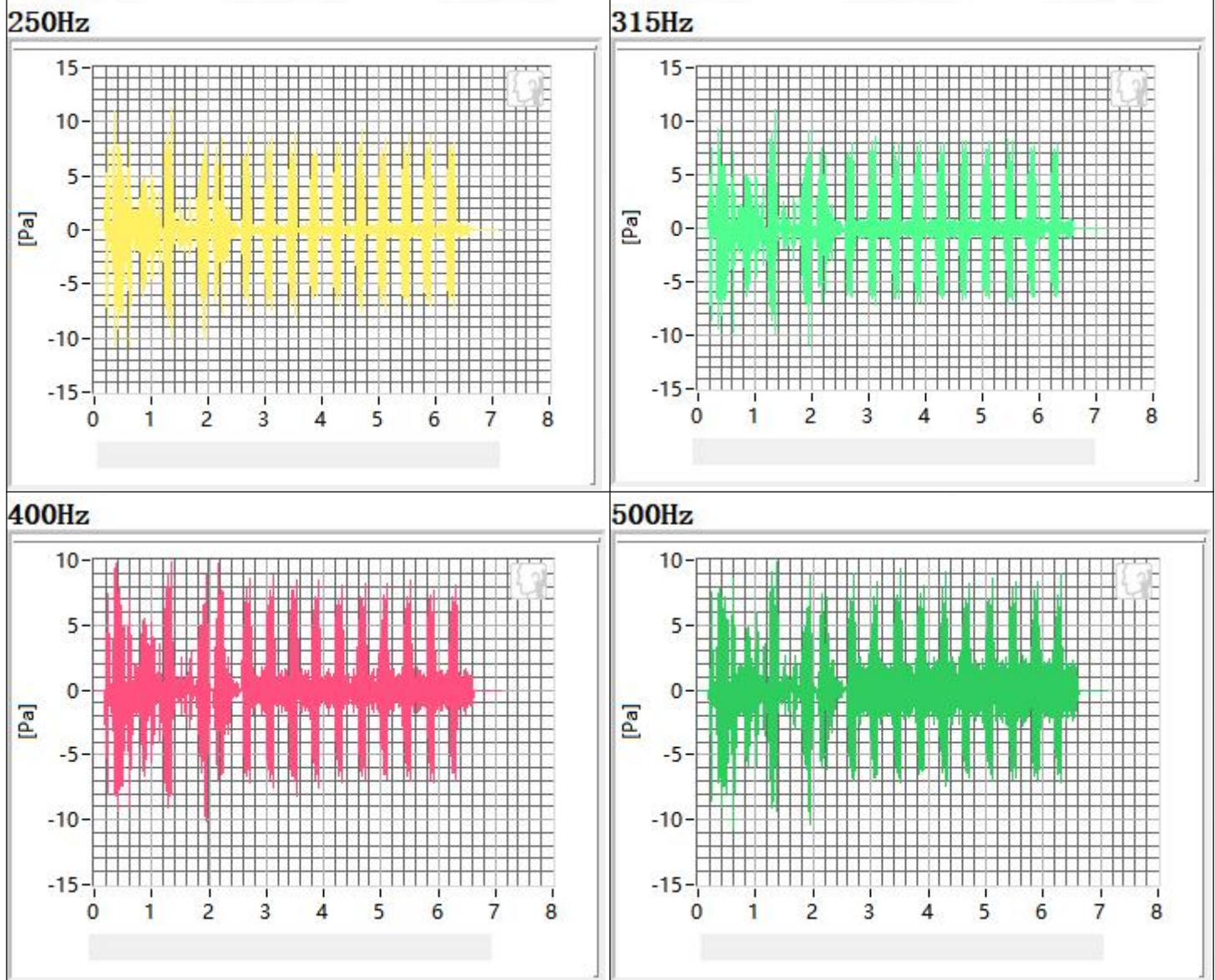
All SDNRs were greater than 20.0 dB, requirement was met. Smallest SDNR was 20.36 dB at 5000Hz.

2.3 Receive Frequency Response

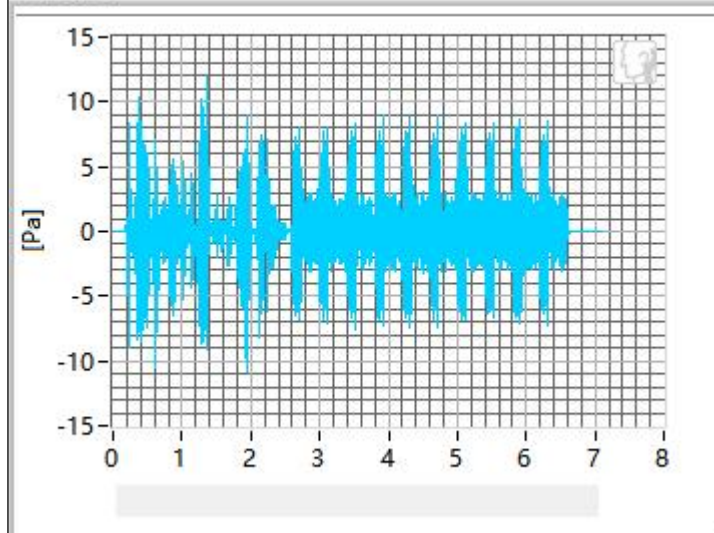


3. LTE band 2 in channel 18700

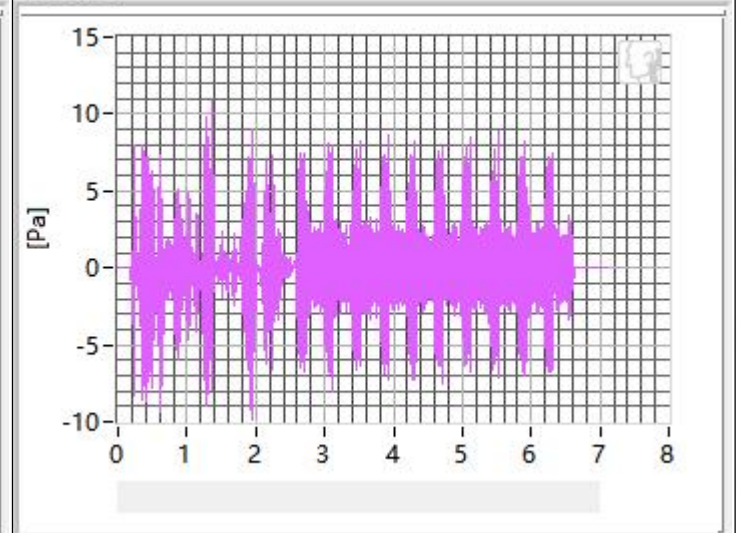
3.1 Receive Distortion and Noise 8N WB



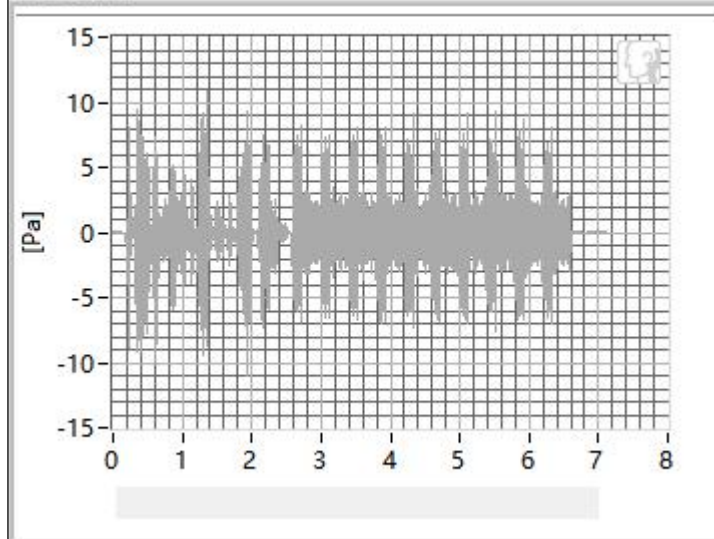
630Hz



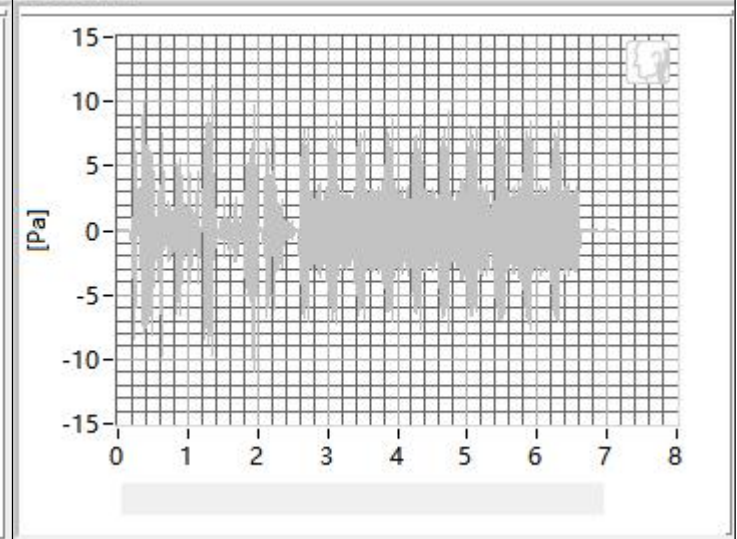
800Hz



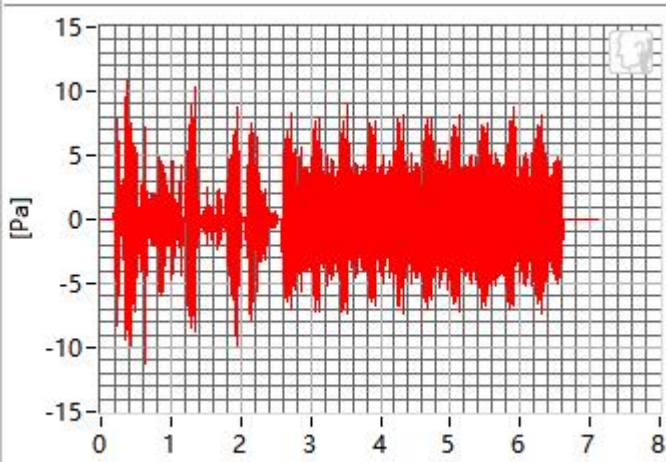
1000Hz



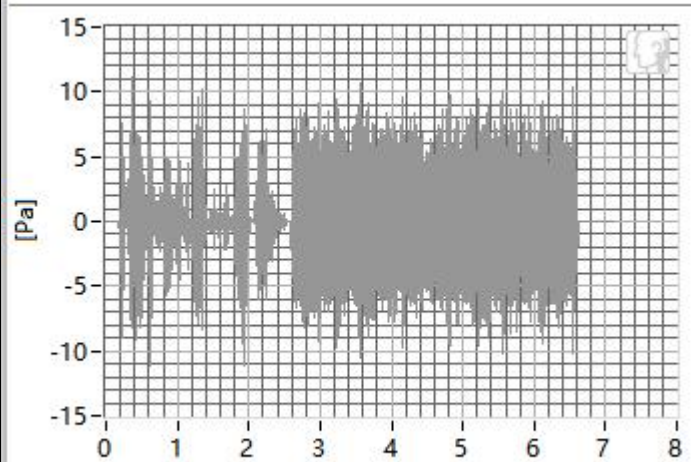
1250Hz



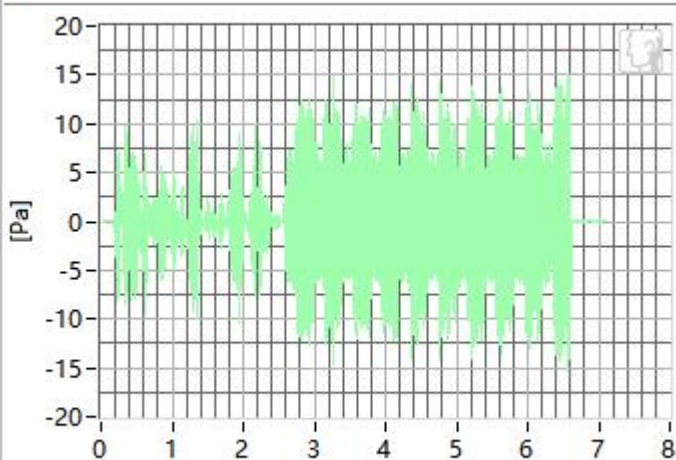
1600Hz



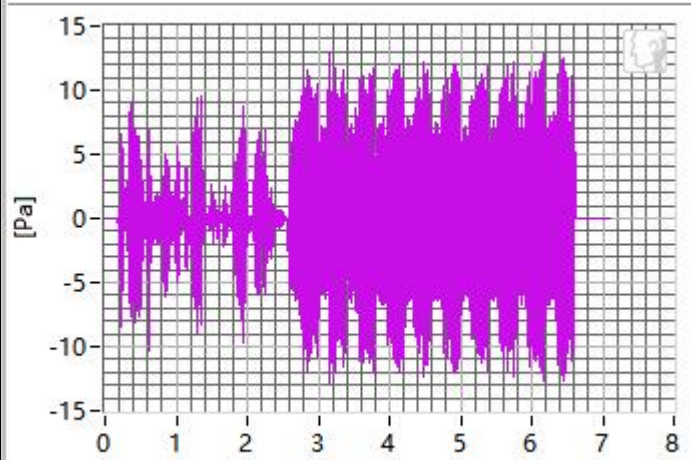
2000Hz



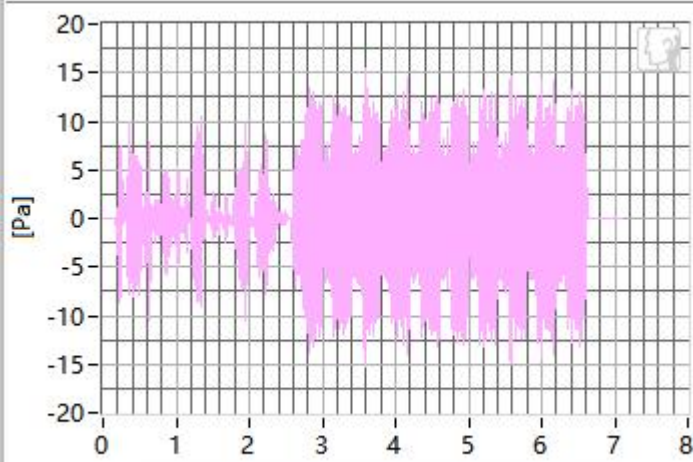
2500Hz



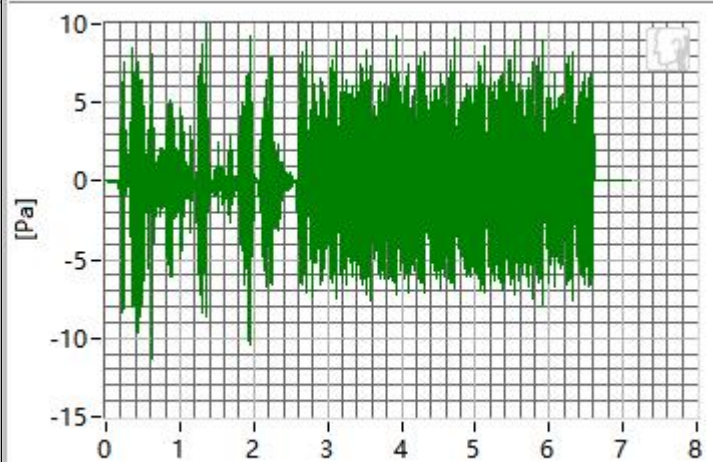
3150Hz



4000Hz



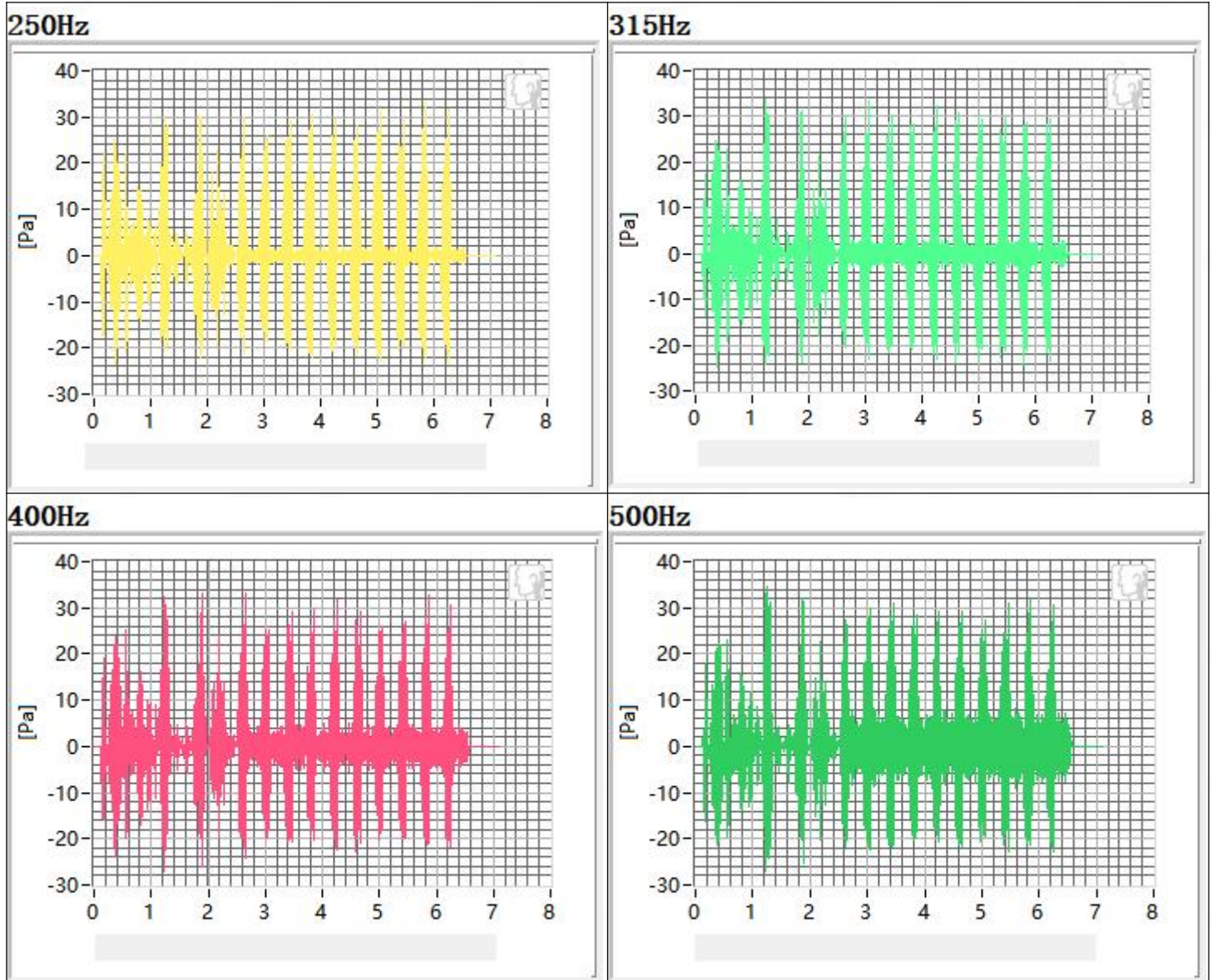
5000Hz



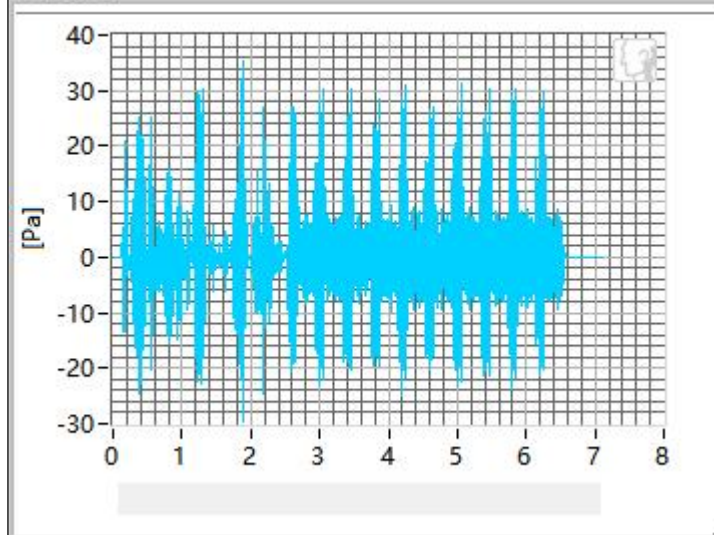
Frequency	SDNR	Frequency	SDNR
250Hz	28.65 dB	1250Hz	24.11 dB
315Hz	29.47 dB	1600Hz	25.53 dB
400Hz	26.81 dB	2000Hz	22.36 dB
500Hz	30.79 dB	2500Hz	25.91 dB
630Hz	31.16 dB	3150Hz	27.24 dB
800Hz	27.93 dB	4000Hz	28.72 dB
1000Hz	26.35 dB	5000Hz	20.06 dB

All SDNRs were greater than 20.0 dB, requirement was met. Smallest SDNR was 20.06 dB at 5000 Hz.

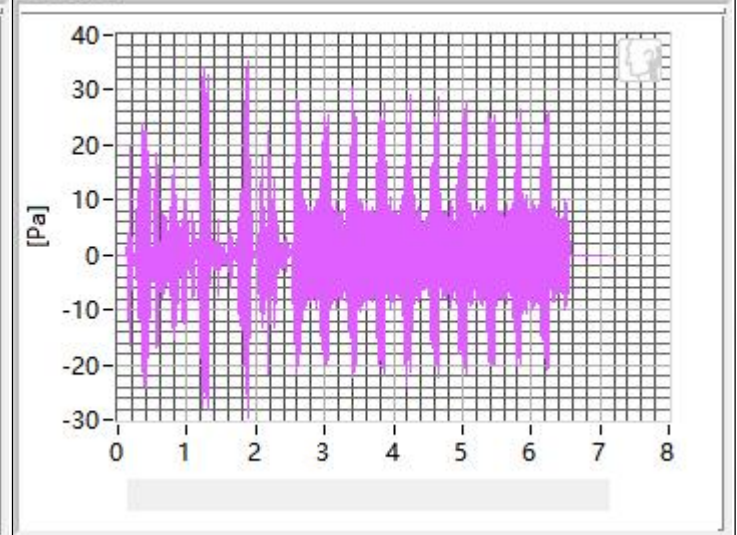
3.2 Receive Distortion and Noise 2N WB



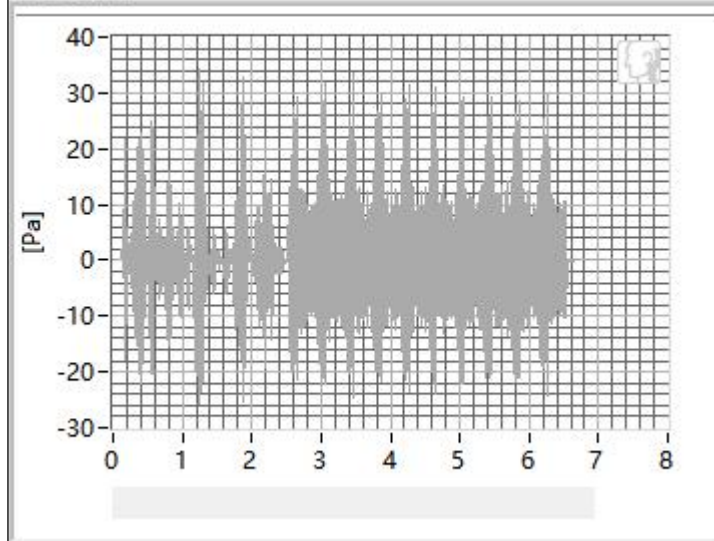
630Hz



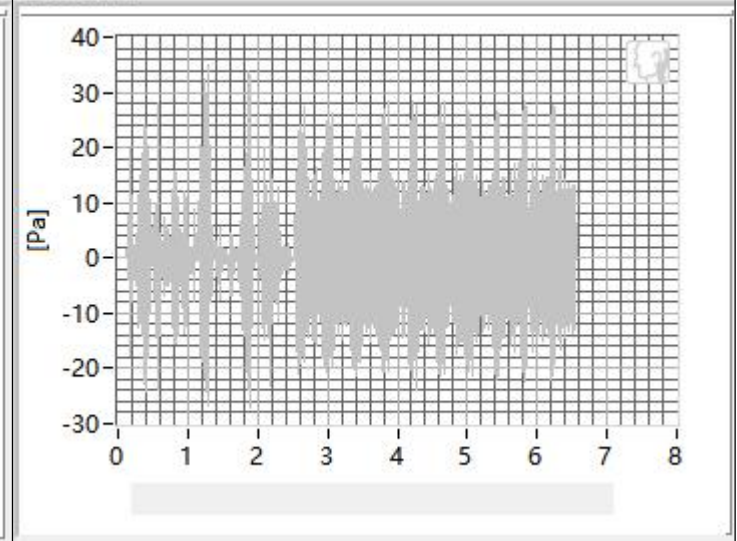
800Hz



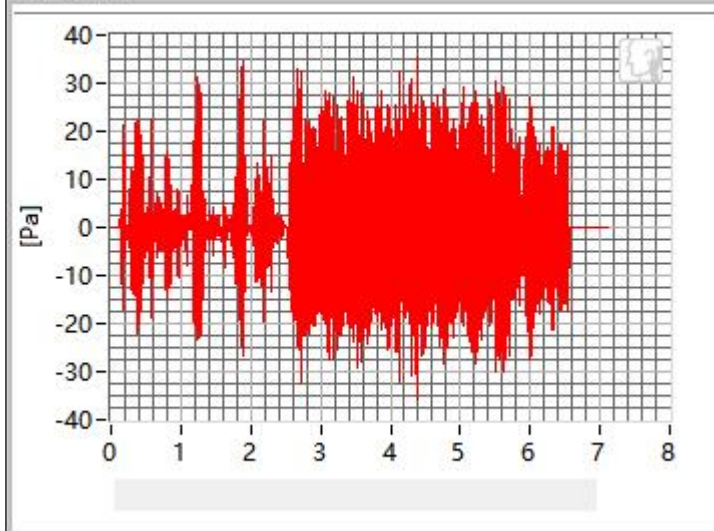
1000Hz



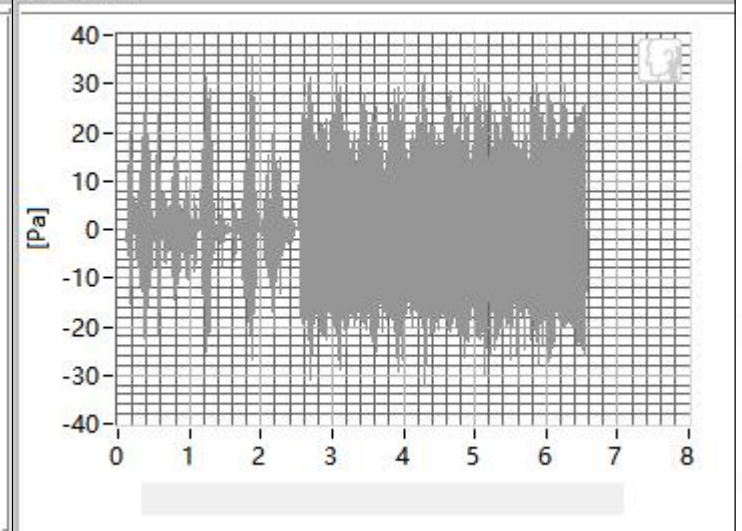
1250Hz



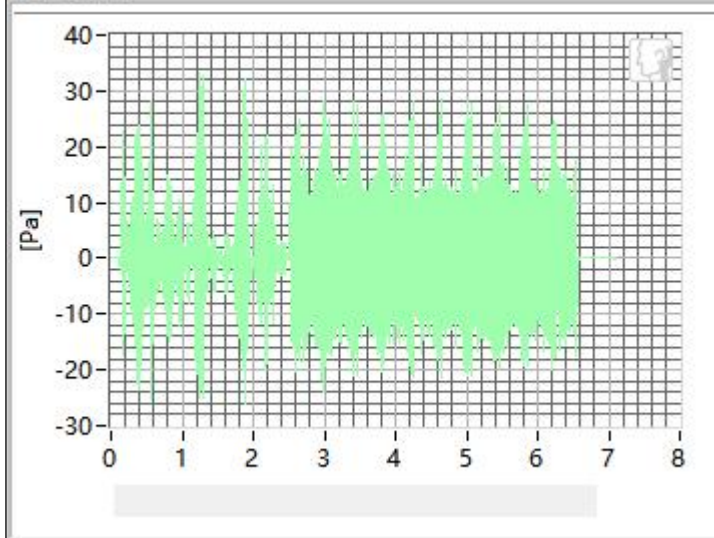
1600Hz



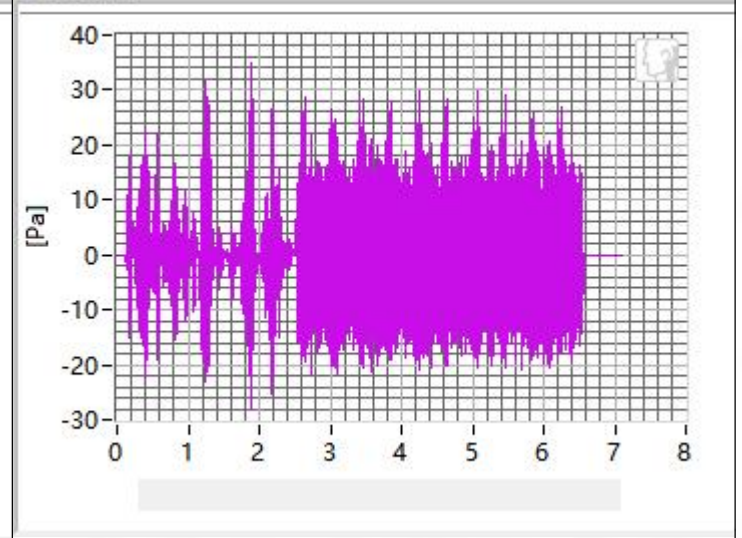
2000Hz



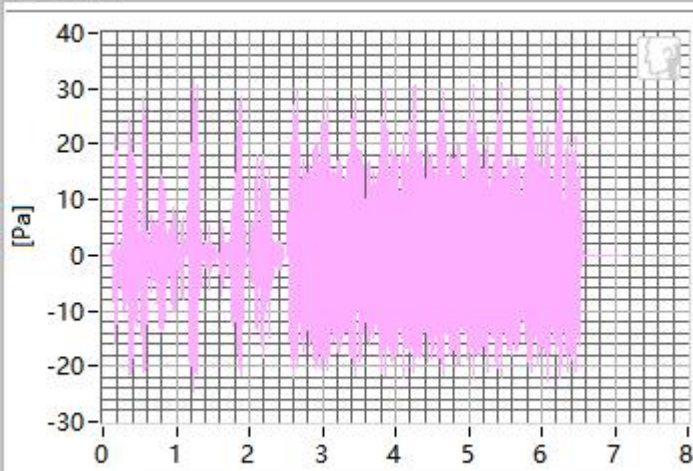
2500Hz



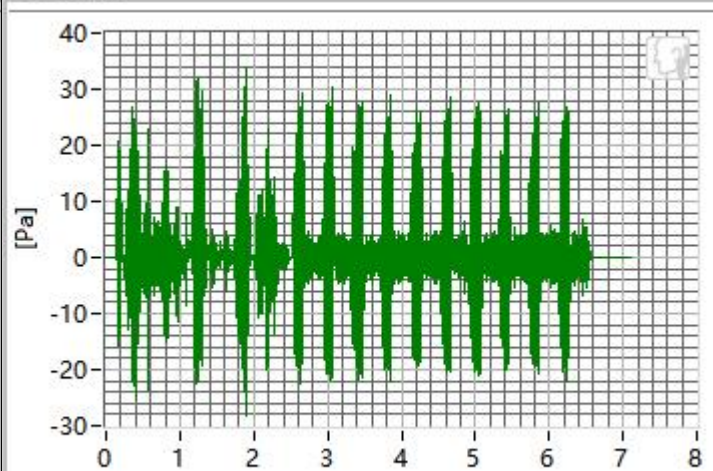
3150Hz



4000Hz



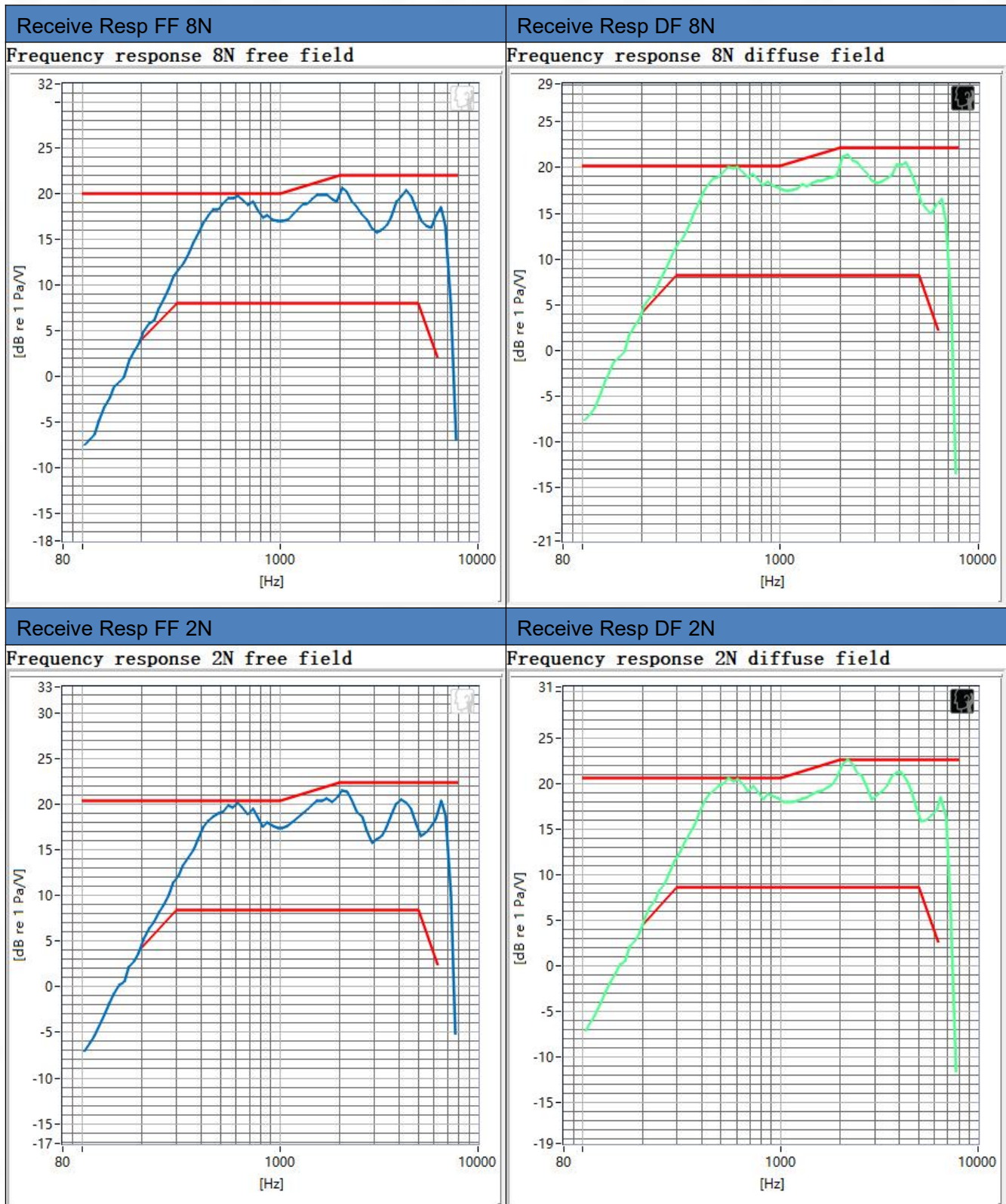
5000Hz



Frequency	SDNR	Frequency	SDNR
250Hz	28.06 dB	1250Hz	22.77 dB
315Hz	28.73 dB	1600Hz	25.29 dB
400Hz	27.87 dB	2000Hz	23.01 dB
500Hz	31.94 dB	2500Hz	25.79 dB
630Hz	32.04 dB	3150Hz	26.72 dB
800Hz	26.67 dB	4000Hz	28.96 dB
1000Hz	27.16 dB	5000Hz	20.75 dB

All SDNRs were greater than 20.0 dB, requirement was met. Smallest SDNR was 20.75 dB at 5000Hz.

3.3 Receive Frequency Response



ANNEX B Test Setup Photo



ANNEX C CALIBRATION REPORT

Please refer the document "CALIBRATION REPORT.pdf".



BTF Testing Lab (Shenzhen) Co., Ltd.

F101, 201 and 301, Building 1, Block 2, Tantou Industrial Park, Tantou Community, Songgang Street,
Bao'an District, Shenzhen, China

www.btf-lab.com

--END OF REPORT--