

Creacheer ONE

Wearable Computer

User Manual

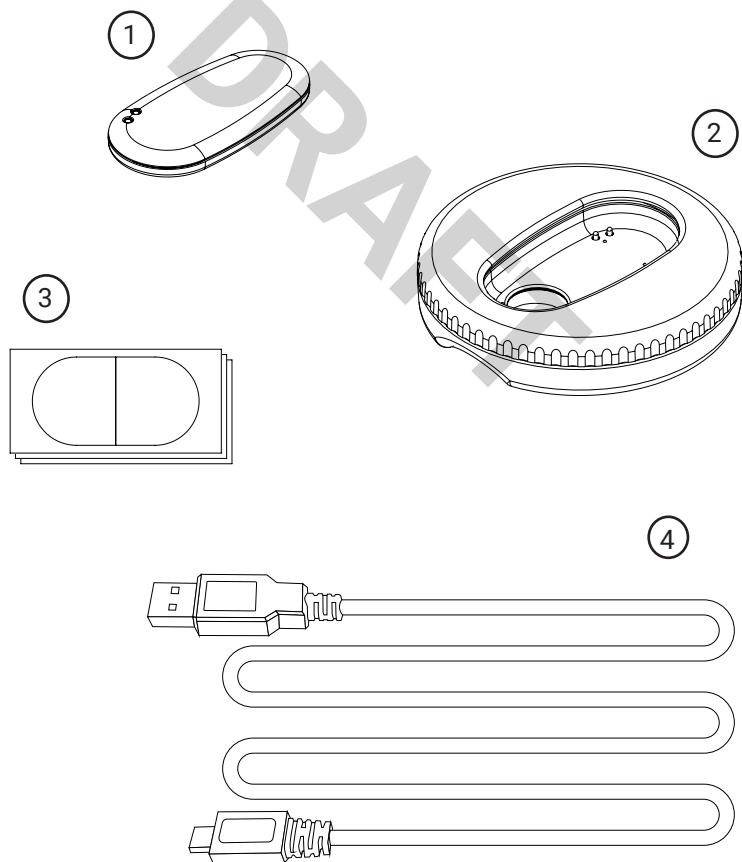
DRAFT

Introduction

Thanks for purchasing Creacheer ONE. This User Manual includes important information related to care and safe handling and shows how to get started using the product.

Product Components

- (1) Sensor Module
- (2) Charging Dock
- (3) Adhesive Stickers
- (4) Charging Cable



Intended Use

Creacheer ONE is a wearable device that senses body position and motion, delivers vibration alerts, and provides other wearable computing functionality. Creacheer ONE communicates wirelessly via Bluetooth and operates in conjunction with approved software applications running on the user's smartphone or mobile device.

NOTE: Creacheer ONE is not a medical device and is not intended to diagnose, treat, cure, or prevent any disease.

Product Safety

Users must read, understand, and follow all instructions in this manual before operating this product. Failure to do so may result in electrical shock, injury, fire, data loss, and or damage to the product.

DANGER

To reduce the risk of electrical shock:

- Do not expose the Charging Dock or the Charging Cable to moisture or liquids.
- Do not submerge or swim with the Sensor Module. While capable of resisting splashes and rinsing, it is not designed to be submerged.

WARNING

To reduce the risk of electrical shock, injury, fire, data loss, and or damage to the product:

- Only use the product for its intended use.
- This is not a toy and is not intended for children. Do not allow children to have unsupervised access to the Creacheer ONE product. Small parts included with this product may represent a choking hazard.
- Do not attempt to open the enclosure of any product

component or attempt to repair the product yourself. This may expose you to electrical or other hazards and will void the product warranty.

- The Sensor Module component contains a lithium-ion polymer battery. Do not puncture the Sensor Module, expose it to extreme heat, expose it to crushing loads, or dispose of it in a fire. Do not attempt to replace the battery. It is rechargeable but non-replaceable.
- For charging the device, use only the provided Charging Cable, or another certified USB cable of less than 3 meters in length, plugged into a certified USB powered port.
- Before wearing the Sensor Module for a significant duration, first test to determine if your skin is sensitive to the Sensor Module or Adhesive Sticker. Some people may have adverse skin reactions.
- Each Adhesive Sticker is intended to be worn for up to 24 hours. Do not reuse stickers or wear for longer than 24 hours.
- Do not place the Sensor Module or Adhesive Sticker on irritated or injured skin.
- When removing the Sensor Module and Adhesive Sticker, remove the device slowly from the skin, allowing the Adhesive Sticker to gradually disengage.
- Do not wear the Sensor Module if it is damaged or excessively hot after charging.
- Avoid exposing any of the product components to harsh chemicals, including solvents and corrosive agents. Harsh chemicals can damage plastic enclosures.
- Avoid exposing any of the product components to significant periods of direct sunlight. Ultraviolet radiation in sunlight can damage or weaken plastic enclosures.
- To ensure proper functioning of the product and to avoid data loss, follow the instructions provided in the approved software application, including instructions related to syncing data and updating software and firmware.

CAUTION

- To minimize the chance of skin irritation, wear the Sensor Module on a variety of skin locations. Avoid wearing the Sensor Module on the same skin location for two or more consecutive days.

Product Care

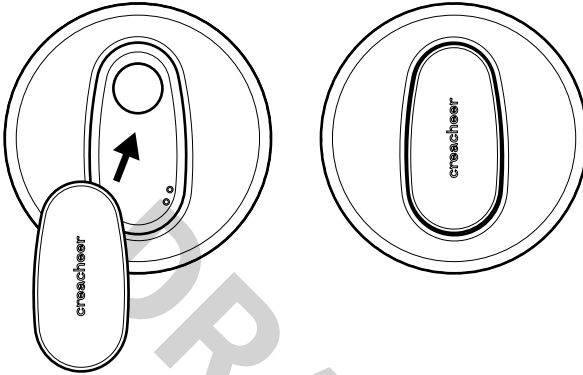
- The Sensor Module can be cleaned with a cloth dampened with water or mild soap and water.
- The Charging Dock can be cleaned with a dry cloth.
- To protect the lifetime of the rechargeable battery, charge the device fully at least once per month.
- Store the product at room temperature. Additionally prior to storing, ensure that the Sensor Module has at least 50% battery charge status. To protect the lifetime of the rechargeable battery, never store the Sensor Module in the low battery state.
- This product contains a lithium-ion polymer battery which must be disposed of with care. Do not dispose of the product with normal household waste. Please refer to the waste-handling regulations and guidance issued by your local authorities for battery disposal procedures.

Getting Started

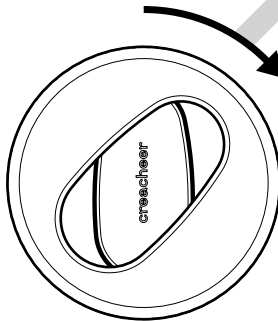
First, fully charge the Sensor Module.

To charge the Sensor Module:

- Place the Sensor Module in the Charging Dock so that the two gold contacts on the Sensor Module align with and touch the two gold pins of the Charging Dock.



- Rotate the circular bezel of the Charging Dock clockwise until you feel a click. This secures the Sensor Module.



- Ensure that the Charging Cable is plugged into both the Charging Dock and a standard powered USB port.
- The Sensor Module will vibrate once when charging begins and its light will begin to blink slowly. You can view the light through the hole on the underside of the

Charging Dock.

- Charging is complete when the light on the Sensor Module glows constantly, without blinking.

Next, download the app.

- Find and download the Creacheer App on the Apple App Store or Google Play Store.
- Once downloaded, launch the app and follow the instructions. The instructions included in the application will show you how to connect wirelessly to the Sensor Module, how to apply the Adhesive Sticker and wear the Sensor Module properly, and how to start using the product functionality.

Specifications

Sensor Module

- Width, length, depth: 25 mm, 49 mm, 5 mm
- Weight: 6 grams
- Battery: rechargeable lithium-ion polymer
- Ingress protection: water resistant to splashes and rinsing
- Material: polycarbonate enclosure, gold-plated charge contacts
- Connectivity: Bluetooth Low Energy

Charging Dock

- Diameter, depth: 69 mm, 15 mm
- Weight: 28 grams
- Ingress protection: not water resistant
- Material: polycarbonate enclosure, gold-plated charge contacts

Adhesive Sticker

- Skin-facing surface: silicone adhesive
- Device-facing surface: acrylic adhesive

General

- Supply/Input: 5V DC, 0.5A
- Charging Temperature: 0° to 45° C (32° to 113° F)
- Operating Temperature: -10° to 45° C (14° to 113° F)
- Non-operating Temperature: -20° to 60° C (-4° to 140° F)
- Relative humidity: 15% to 95% (non-condensing)
- Atmospheric pressure: 70 - 107 kPa

Supported mobile device operating systems

- Apple iOS 10 or higher
- Android 4.4 or higher

Support and Contact Information

If you have questions about this product, please visit www.creacheer.com/support.

Warranty

Creacheer, Inc. provides a limited warranty to the purchaser of a new Creacheer ONE product when the product is purchased directly from Creacheer, Inc. or from an authorized reseller.

According to the terms of this limited warranty, Creacheer's products are warranted against defects in materials and workmanship and shall perform in accordance with published specifications for a period of one year after the date of purchase. Creacheer reserves the right to change specifications without notice.

For full warranty and product return details, please visit: www.creacheer.com/returns.

Regulatory Information

Model: CR1

FCC ID: 2AQRCCR1

IC: 24183-CR1

United States: FCC

This device complies with part 15 of the FCC Rules.

Operation is subject to the following two conditions:

1. This device may not cause harmful interference and
2. This device must accept any interference, including interference that may cause undesired operation of the device.

FCC Warning

Changes or modifications not expressly approved by Creacheer, Inc. could void the user's authority to operate the equipment.

Note: This equipment has been tested and found to comply with the limits for a Class B digital device, pursuant to part 15 of the FCC Rules. These limits are designed to provide reasonable protection against harmful interference in a residential installation. This equipment generates, uses and can radiate radio frequency energy and, if not installed and used in accordance with the instructions, may cause harmful interference to radio communications. However, there is no guarantee that interference will not occur in a particular installation. If this equipment does cause harmful interference to radio or television reception, which can be determined by turning the equipment off and on, the user is encouraged to try to correct the interference by one or more of the following measures:

- Reorient or relocate the receiving antenna.
- Increase the separation between the equipment and receiver.
- Connect the equipment into an outlet on a circuit different from that to which the receiver is connected.
- Consult the dealer or an experienced radio/TV technician

for help.

This device meets the FCC and IC requirements for RF exposure in public or uncontrolled environments.

Cet appareil est conforme aux conditions de la IC en matière de RF dans des environnements publics ou incontrôlée.

FCC Electronic Label

FCC Regulatory Information is available via an e-label in the accompanying smartphone app. To view the content: Navigation Menu > About > Regulatory Information

Canada: Industry Canada

IC Notice to Users English/French in accordance with RSS GEN Issue 5:

This device complies with Industry Canada license exempt RSS standard(s). Operation is subject to the following two conditions:

1. this device may not cause interference, and
2. this device must accept any interference, including interference that may cause undesired operation of the device.

Cet appareil est conforme avec Industrie Canada RSS standard exempts de licence(s). Son utilisation est soumise à Les deux conditions suivantes:

1. cet appareil ne peut pas provoquer d'interférences et
2. cet appareil doit accepter Toute interférence, y compris les interférences qui peuvent causer un mauvais fonctionnement du dispositif.

This Class B digital apparatus complies with Canadian ICES-003.

Cet appareil numérique de la classe B est conforme à la norme NMB-003 du Canada.

Canada Electronic Label

Notice to the User: The IC ID can also be viewed on your smartphone. To view the content: Navigation Menu > About > Regulatory Information

Avis à l'utilisateur: L'ID de l'IC peut également être consulté sur votre appareil mobile. Pour voir le contenu: Menu de navigation > À propos > Informations réglementaires

Copyright © 2019 Creacheer, Inc. All rights reserved.
Creacheer is the registered trademark of Creacheer, Inc. All other mentioned trademarks and tradenames are the property of their respective owners.

DRAFT