

PDS-100

USER MANUAL

PHILIA SMART DOOR LOCK



WARNING

No doorlock can guarantee its own security or safety. You should contact an authorized locksmith or other security specialist to reduce the risk of intrusion from damage caused by your environmental, force, or technical means and to enhance security.

Thank you for purchasing the PDS-100 product. This manual is designed to make your PDS-100 product more convenient and safe to use. Before using PDS-100 product, please read this manual and hope to use it happily and safely.

www.philiatech.co.kr

Package Contents

- Exterior : Install outside the door.
- Interior : Install inside the door.
- Number Plate : Displays the number and recognizes the card.
- Emergency Terminal : Power can be supplied from outside when Battery is low.
- Key Cover : revents exposure of key cylinder.
- Registration [R]Button : Used for setting and releasing
- Thumb-Turn : Used for manual unlock / lock operation from inside.
- Lock Button : Used to set manual lock and internal double lock.
- Magnet Sensor : It recognizes the Open/Close of door when it is locked automatically.
- BLE / Z-Wave Pack : Used for BLE and Z-Wave Option pack.
- Battery Cover : Interior Battery Cover.
- Battery : AA Size 1.5V LR6 Alkaline Battery.
- Interior Plate : Fix Exterior and Interior to Door.
- Card : Support a ISO14443A-Part3 Card.
- Adapter 2종 [D], [+] : Used to connect Key Tail and Thumb-Turn.
- Screw Guide-A, B, C [3종] : Used to fix Exterior and Key cylinder.
- 3/16" Inch Screw (2EA) : Used to fix the key cylinder.
- 4/16" Inch Screw (3EA) : Used to fix the key cylinder.
- M4X40mm Screw (3EA) : Used to fix the Exterior and the Interior Plate to Door.
- M4X6mm Screw (3EA) : Used to fix the Interior.
- 4X16mm Screw Tapping (2EA) : Used to fix the magnet.
- Magnet : Magnet : Used to operate the magnet sensor.
- User Manual : Guides you how to guide.
- Install Guide : Guides you how to install.
- Low voltage : Indicates the low voltage of the batteries.
- Reset : Restores the system power.

CAUTION

The setting and operation of each function can be implemented by loss of function [malfunction], natural disaster, arbitrary change, etc. And the life and warranty of the product may be made depending on the installation environment and frequency of use. Please be sure to read the User Manual and Install Guide.

CAUTION

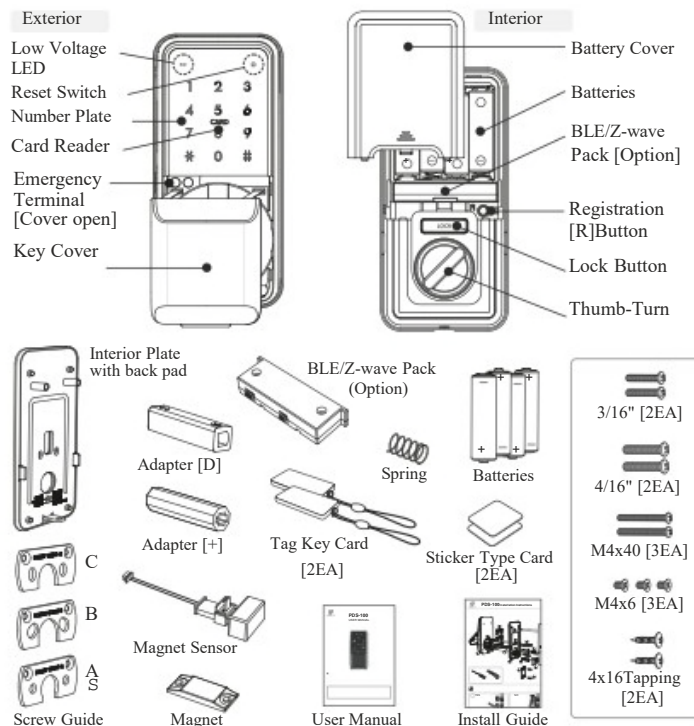
Please be careful not to leak the personal information according to BLE and Z-wave settings.

CAUTION

Please observe the following precautions in order to avoid injury or damage to property.

- Do not install outdoors in rain.
- Do not disassemble or reassemble as it may cause malfunction.
- Do not use any tools to subject the product to excessive impact.
- Be careful with the password and the card management.
- Please make sure that the door is properly locked when you go out.
- Do not spray directly on water or clean with benzene, thinner or alcohol.

Package Contents

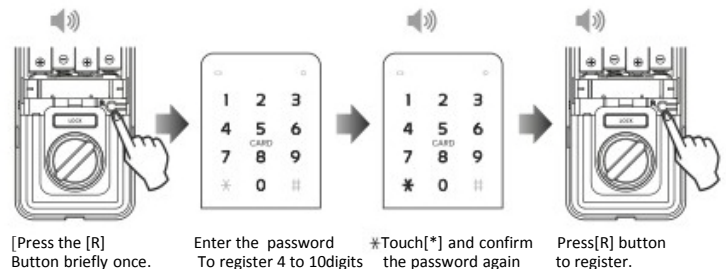


CAUTION

- When registering for the first time or changing the password, the door may be locked by mistake. Be sure to register with the door open.
- Please change your password regularly and re-register your password immediately when you are exposed to others.
- Even if one of the registered cards is lost, please delete all registered card immediately.

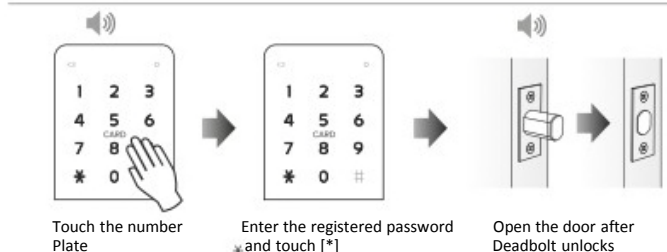
Password registration

Register the password to be used. Only one password can be set.



If you register a new password, the existing registered password is automatically deleted.

Using your password

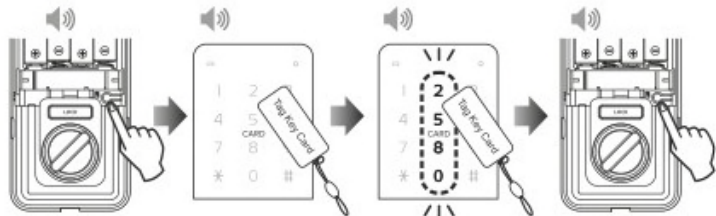


Reference: Anti-peek feature

- If you are concerned about the external exposure of your password, enter an arbitrary number before entering the password and enter the registered password [Up to 20 digits].
- If you need to use OTP, BLE Pack [Option] must be installed to enable unlock operation by OTP. See attached BLE registration and usage.

Card registration

RFID cards including Smartphone NFC can be registered up to 30.
The same card will not be registered twice during registration.



Press and release the [R] button briefly once

Touch the card to be registered to the card Receiver

When number 2580 are blinking at the same time, the card to be registered is contacted continuously

Press [R] button to register

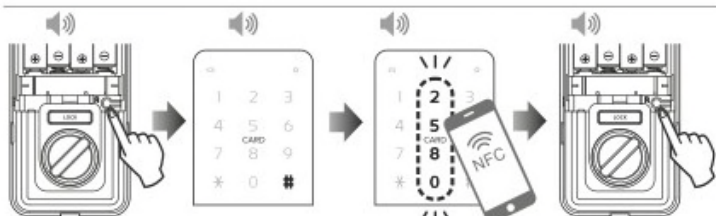
Using CARD



Contact the registered card with the card receiver.

- Sticker Type Card may not be registered depending on the smartphone model.
- If the sticker type card surface is metallic, the recognition rate may be significantly degraded or not recognized.
- Depending on the location of the smartphone, the card may not be recognized.
- When using the Sticker Type Card, turn off the NFC function of the smartphone and use it.

Registering NFC Card on Smartphone [Use when Applying BLE Option]



[Press and release the [R] Button once briefly

and touch [#] once.

Then if the numbers 2, 5, 8, and 0 are blinking at the same time, the smartphone NFC card contacts the card receiver.

Press [R] Button to register.

5

Use after install BLE app and activate NFC Mode in Menu

Using Smartphone NFC Card



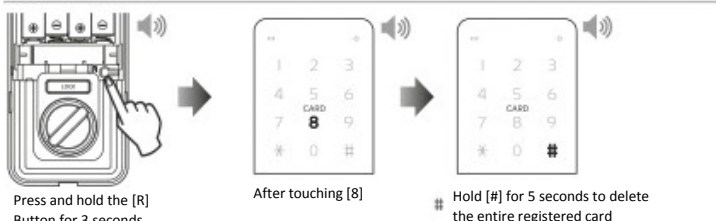
Touch the Number Plate.

Touch [#] once.

When the numbers 2, 5, 8, and 0 are blinking after touching [#] once, the smartphone NFC card contacts the card receiver.

Open Door after Deadbolt Unlock operation.

All Delete Card



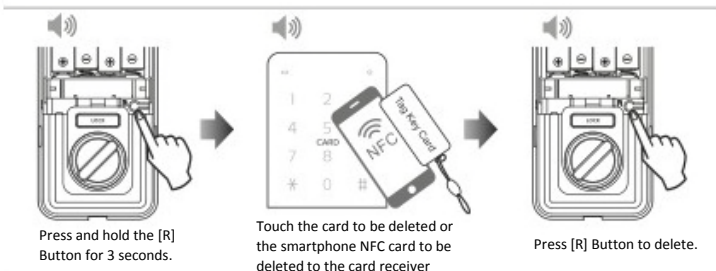
Press and hold the [R] Button for 3 seconds.

After touching [8]

Hold [#] for 5 seconds to delete the entire registered card

If the card is lost, it will cause a security problem. Please re-register the card to use.

Individual Delete Card



Press and hold the [R] Button for 3 seconds.

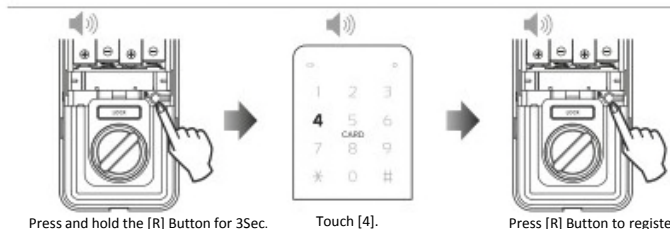
Touch the card to be deleted or the smartphone NFC card to be deleted to the card receiver

Press [R] Button to delete.

- Please keep your password and registration method when you register your card so that it will not be exposed to the outside.
- If the registered password or card is deleted or not recognized, it is recommended to register or reset it immediately.

6

Auto lock setting



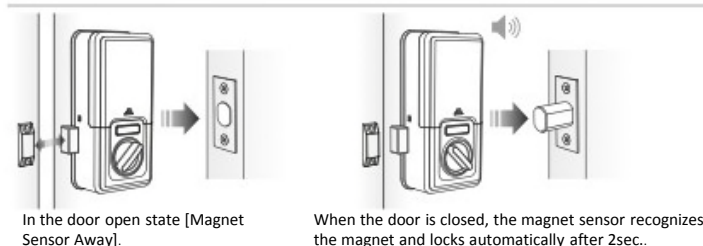
Press and hold the [R] Button for 3Sec.

Touch [4].

Press [R] Button to register.

If you keep the door unlock status after setting auto lock, Door Unlock beep sounds twice.

Auto lock function



In the door open state [Magnet Sensor Away].

When the door is closed, the magnet sensor recognizes the magnet and locks automatically after 2sec.

The lock operation due to abnormal or malfunction of the magnet sensor may not be performed. Please check if the door is securely locked at the time of door close.

Manual lock setting



Press and hold the [R] Button for 3 sec.

Touch [7].

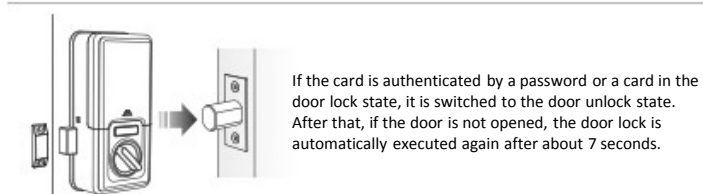
Press [R] Button to register.

When the door is closed, the magnet sensor will not be recognized and the door will not lock even if the door is closed.

To lock the door, touch the Number Plate for 2 seconds in the door close state or turn the Thumb-Turn to lock the door.

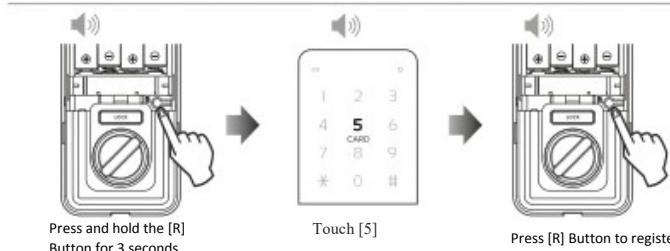
7

Automatic Re-lock function



If the card is authenticated by a password or a card in the door lock state, it is switched to the door unlock state. After that, if the door is not opened, the door lock is automatically executed again after about 7 seconds.

Double Authentication Mode Setting [Password and Card must be registered.]



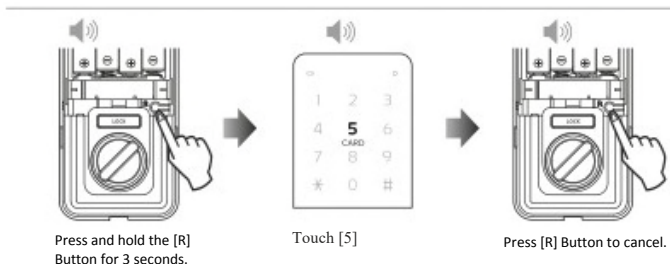
Press and hold the [R] Button for 3 seconds.

Touch [5]

Press [R] Button to register.

If double authentication mode is set, after the password is authenticated, the card is authenticated and the door unlock operation is performed

Disable Dual Authentication Mode



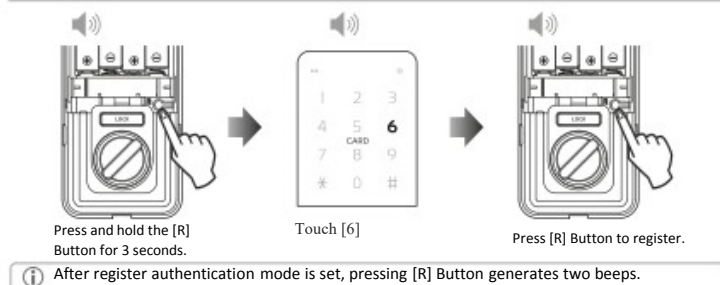
Press and hold the [R] Button for 3 seconds.

Touch [5]

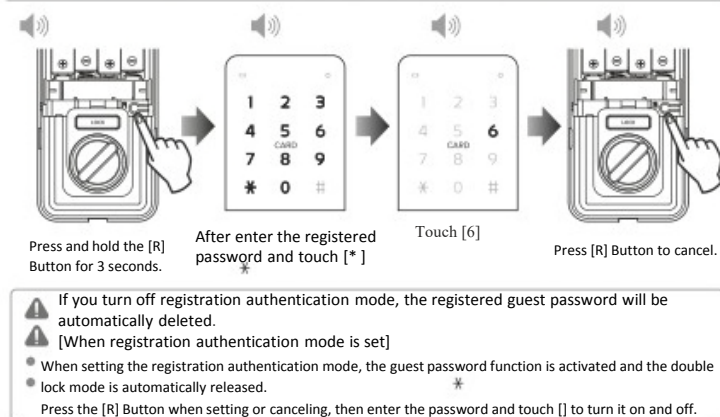
Press [R] Button to cancel.

8

Registration Authentication Mode Setting

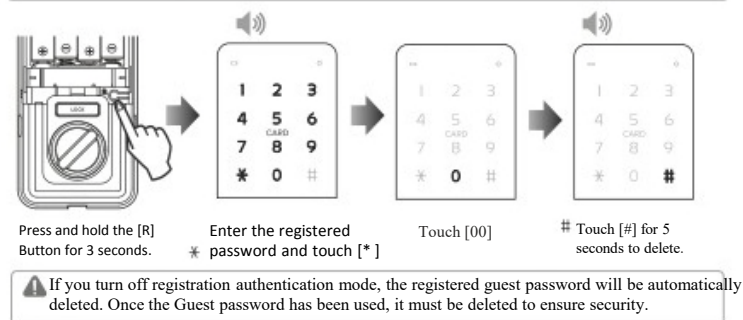


Disable Registration Authentication Mode

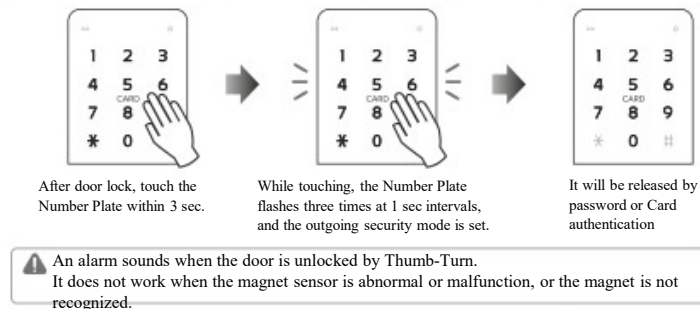


9

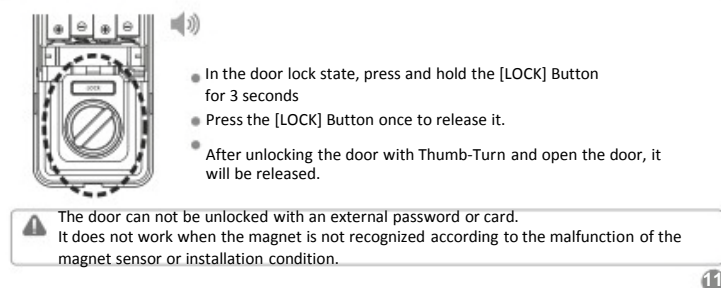
Delete all guest passwords



Outgoing security mode setting function

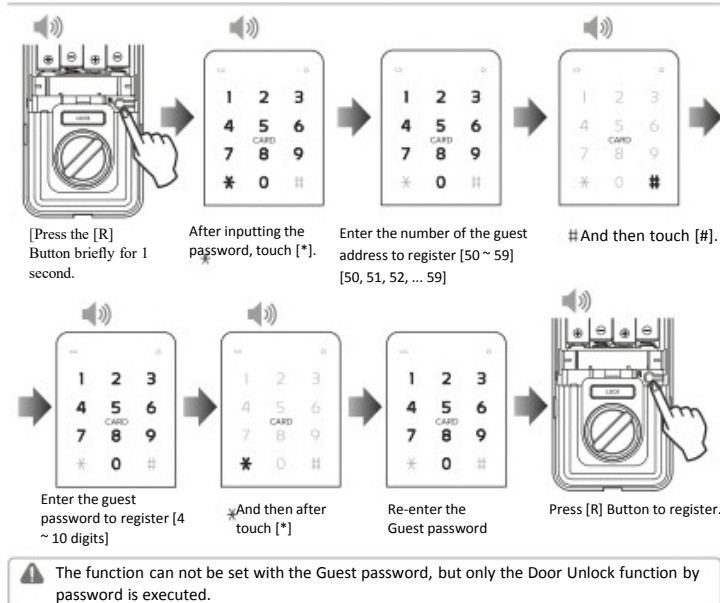


Internal security mode function

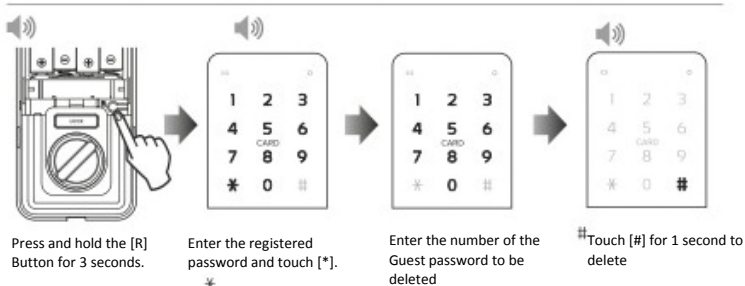


11

Guest Password Registration [Up to 10 Guest Passwords can be registered.]

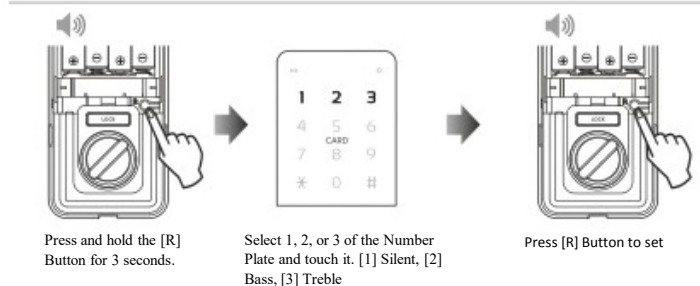


Individual guest password deletion

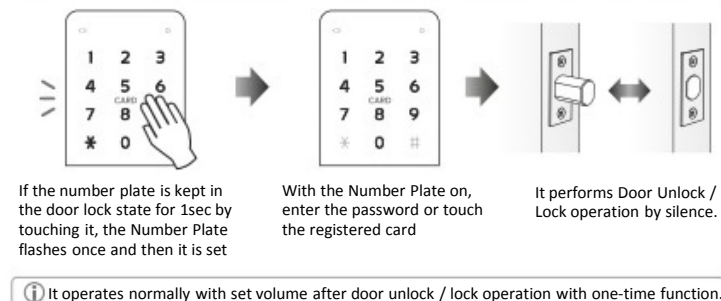


10

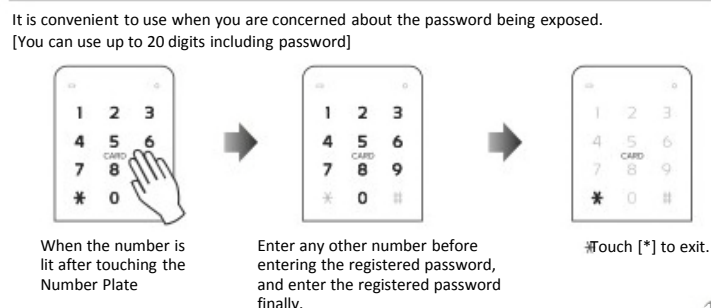
BEEP Volume control



Etiquette Mode



Anti-peek function [imaginary function]



12

High Temperature Alarm

- When an internal fire or high temperature occurs, an alarm sound is generated and the door unlock operation is executed automatically.
- The alarm sounds for 3 minutes continuously. [Internal temperature $70^{\circ}\text{C} \pm 5^{\circ}\text{C}$ occurred]
- Temperature differences may occur depending on the installation environment.
- It will be released when it is authenticated with registered password or Card
- It is released when battery is removed.



Intrusion warning

- When the door is unlocked or the door is unlocked abnormally, an alarm sounds continuously for 3 minutes.
- Applied after 7 seconds from door lock.
- It will be released when it is authenticated with registered password or Card.
- It is released when battery is removed.



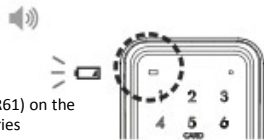
3 min. Non-operating Alarm

- An error sounds when authentication is attempted with an unregistered password or card, an authentication error occurs five times, and all operations stop for three minutes



Battery Low Voltage Alarm

- If a low battery is detected, a warning sound will be generated when the door is unlocked / locked and the Low Voltage red light on the Number Plate will blink
- Replace Batteries with new ones immediately.
- If the replacement time has passed, use the [9V] Battery (6LR61) on the Emergency Terminal to open the door and replace the batteries

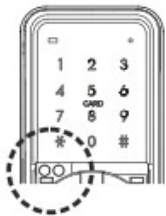


Deadbolt Jam Warning

- In case of a door lock / unlock / lock operation, a beep sounds when there is a mechanical failure during installation failure or deadbolt operation. [Please check installation and deadbolt operation.]



Emergency Power [9V] Notification function



- Contact 9VBattery (6LR61) [Sold separately] to the Emergency Terminal.
- Authenticate your password or card in contact.



- When you purchase the 9VBattery, please purchase the replacement batteries as well
[Change Batteries Spec : 1.5V LR6 AA Size ALKALINE(4ea)]

13

BLE Function [Option]

Execute Deadbolt Unlock / Lock with APP control through BLE

- Execute Deadbolt Unlock when touching [Unlock] button in APP of smartphone
- Execute Deadbolt Lock when touching [Lock] button in APP of smartphone

How to register and use BLE

- Download the Keywe for a smarter life app from the Google Play Store
- Sign up after running Keywe app (Email registration)



3. Door lock registration

- Run the Keywe app.
- Press the menu button on the upper left of the screen and select the door lock registration item.
- On the door lock registration screen, select the + button and select OK on the registration menu with QR code.
- Scan the QR code inside the battery to register the BLE module.
- Register door lock name and location.



4. Open / Close door lock using BLE

- When you run the Keywe app, it tries to connect between the smartphone and the BLE module.
- Displays the status of door lock when connection is completed.
- Press the center of the screen to change the state of the door lock.
- You can set Smartphone NFC in the door lock menu -> App Settings.
- Disposable OTP is available in the door lock setting.
- You can delete the door lock from the door lock setting.
- Please refer to the following site for detailed explanation about APP. (FAQs -> APP)
[http://keywe.thekeywe.com/index_en.php]



Available when Option is applied

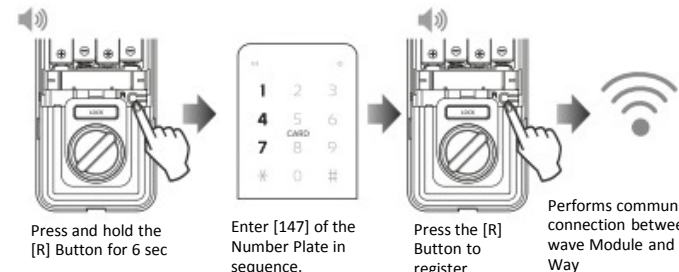
Z-wave & BLE Code

The Z-wave & BLE code information to be registered is enclosed in the Communication Pack or Unit Box. Please attach it directly to the product before or after registration, or inside the battery cover. (The Z-wave Option product is attached to the bottom side of Interior product.)

- Can not re-register when you lose the code information to register. [Z-wave & BLEcode]
- If the communication is not smooth when applying the Option, reinsert the Communication Pack or check that the Pin is not damaged.

15

Z-wave function [Option] / When the registration mode of the hub is set



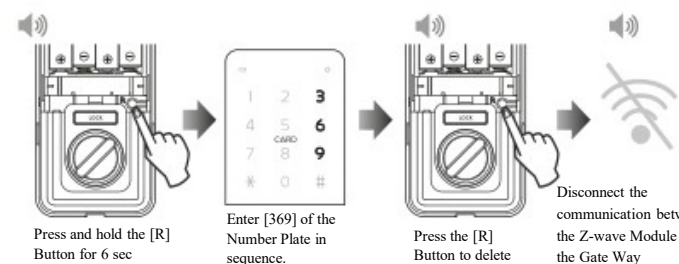
- If the communication connection is not established within 10 sec, registration will be canceled and please try again

- When the registration authentication mode is set, press and hold the [R] Button for 6 seconds, and the Number will flicker twice

- Please check the status of Door Unlock / Lock as it may not be able to operate smoothly due to communication error when door unlock / lock using communication.

Execute deadbolt unlock / lock with APP control through Z-wave

- Execute Deadbolt Unlock when touching [Unlock] button in APP of smartphone
- Execute Deadbolt Lock when touching [Lock] button in APP of smartphone



- The PDS-100 Z-Wave is a secure electronic door lock that supports the Z-Wave Plus standard, which is compatible with earlier versions of Z-Wave.
 - A security enabled Z-Wave controller must be used. The PDS-100 supports the standard security S0 and the new security standard S2.
 - The PDS-100 can be included and operated in any Z-Wave network with other Z-Wave certified devices from other manufacturers and/or other applications.
- All non-battery operated nodes within the network will act as repeaters regardless of vendor to increase reliability of the network.

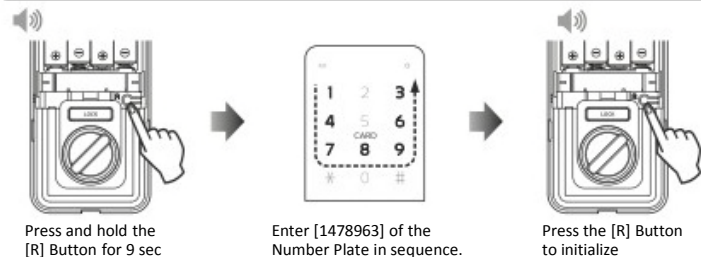
14

User Mode Initialization

In case of suspicion of leakage of the used password, loss of registration card, etc., and security is judged to be weak, the password and card registered by the function used have been initialized to improve security. [When deleting BLE information, please delete it from registered smartphone app.]

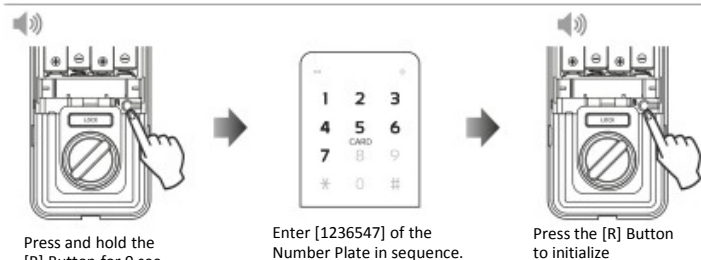
- When user mode initialization is set, all setting values except BLE and Z-Wave information are initialized.

How to Initialize User



- It is recommended to use it when registering incorrectly during registration and not to initialize it during use

Factory Mode Initialization



- Factory Mode Initialization All settings except BLE information are initialized.
- It is recommended to use it when registering incorrectly during registration and not to initialize it

User & Factory Mode Default setting after initialization

Password	1234	※ After initialization, register new password and card
Volume	Treble[3]	
Auto/Manual	Auto	
Dual authentication	Disable	
Registration authentication	Disable	

16

Regulatory Compliance

This product complies with standards established by the following regulatory bodies:

- Federal Communications Commission (FCC)
- Industry Canada

FCC

This device complies with Part 15 of the FCC Rules. Operation is subject to the following two conditions:
(1) this device may not cause harmful interference, and
(2) this device must accept any interference received, including interference that may cause undesired operation.

This equipment has been tested and found to comply with the limits for a Class B digital device, pursuant to Part 15 of the FCC Rules. These limits are designed to provide reasonable protection against harmful interference in a residential installation. This equipment generates, uses, and can radiate radio frequency energy and, if not installed and used in accordance with the instructions, may cause harmful interference to radio communications. However, there is no guarantee that interference will not occur in a particular installation. If this equipment does cause harmful interference to radio or television reception, which can be determined by turning the equipment off and on, the user is encouraged to try to correct the interference by one or more of the following

measures:

- Reorient or relocate the receiving antenna.
- Increase the separation between the equipment and receiver.
- Connect the equipment into an outlet on a circuit different from that to which the receiver is connected.
- Consult the dealer or an experienced radio/ TV technician for help.

IMPORTANT! Changes or modifications not expressly approved by the manufacturer could void the user's authority to operate the equipment.

FCC Radiation Exposure Statement

The equipment complies with FCC Radiation exposure limits set forth for uncontrolled environment. This equipment should be installed and operated with minimum distance 50 mm

Industry Canada


This device complies with Industry Canada licenceexempt RSS standard(s). Operation is subject to the following two conditions:
(1) this device may not cause interference, and (2) this device must accept any interference, including interference that may cause undesired operation of the device.
This device complies with ISSED radiation exposure limits set forth for an uncontrolled environment and meets the ISED radio frequency (RF) Exposure Guidelines. It is desirable that it should be installed and operated keeping the radiator at least 50 mm or more away from person's body.

Canada, avis d'Industrie Canada (IC)

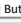

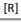
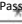
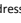
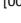
Cet appareil est conforme aux normes RSS exemptes de licencié d'Industrie Canada. Son utilisation est soumise aux deux conditions.
suivantes : (1) cet appareil n'engendre pas d'interférences, et (2) cet appareil doit tolérer tout type d'interférences, notamment les interférences pouvant provoquer une utilisation non désirée de l'appareil.
Cet équipement est conforme aux limites établies par Industrie Canada en matière d'exposition aux radiations dans un environnement non contrôlé. Cet équipement doit être installé et utilisé avec une distance minimale de 50 mm entre le radiateur et votre corps.between the radiator and your body.

Specification

Components	Specifications	Remarks
Exterior	76.4mm(W) X 164.7mm(H) X 43mm(D) Polycarbonate & Al Diecasting	Rated Volt : DC 6V Operation Temp. : -25~60 C High Temp. Alarm : 70 C ±5 C
Interior	71.3mm(W) X 151.8mm(H) X 39mm(D) Polycarbonate & Zn Diecasting	
Battery	4 X AA Alkaline 1.5V Batteries (LR6) (6V)	
Card	ISO14443A PART3 TYPE	
Option	BLE Communication Pack	
	Z-Wave Communication Pack	
	BLE + Z-Wave Communication Pack	

-  Batteries are used for 15 months when used 10 times a day.
※ Battery life may vary depending on the environment and frequency of use.

Summary of how to use PDS-100

Usage function	Default	Set up
Password registration	1234	[R] Button> Password to register> [*]>  enter password> [R] Button
Card registration	None	[R] Button> Card to register(Continuous registration)> [R] Button
Card Delete [All]		Press [R] Button Hold for 3 seconds> [8]  [*] Hold Touch for 5 seconds
Auto lock setting	Auto	Press [R] Button Hold for 3 seconds> [4]> [R] Button
Manual lock setting		Press [R] Button Hold for 3 seconds> [7]> [R] Button
Dual Authentication Setting	None	Press [R] Button Hold for 3 seconds> [5]> [R] Button
Dual Authentication Disable		Press [R] Button Hold for 3 seconds> [5]> [R] Button
Setting Registration Authentication	None	Press [R] Button Hold for 3 seconds> [6]> [R] Button
Disable Registration Authentication		Press [R] Button Hold for 3 seconds> Enter Password>  [*]> [6]> [R] Button
Set guest password	None	[R] Button> Enter the password> [*]>  Enter the address [51 ~ 59]> [#]> Guest Password > [*]> Re-enter Guest Password> [R] Button
Delete Guest Password (Individual)	None	Press [R] Button Hold for 3 seconds> Enter Password>  [*]> Address to delete input [50 ~ 59]> [#] Hold Touch for 1 second
Delete Guest Password (all)	None	Press [R] Button Hold for 3 seconds> Enter Password> [*]> [00]> [R] Button 
Setting outgoing security mode	None	Within 3 seconds after Door Lock Maintain Number Plate Touch> Blinking 3 times
Setting Internal Security Mode		Press and hold the [LOCK] Button for 3 seconds in the Door Lock state.
Disable internal security mode	Disable	Turn Thumb-Turn or press the [Lock] Button
Volume adjustment [Silent]	Treble	Press [R] Button Hold for 3 seconds> [1]> [R] Button
Volume adjustment [Bass]		Press [R] Button Hold for 3 seconds> [2]> [R] Button
Volume adjustment [Treble]		Press [R] Button Hold for 3 seconds> [3]> [R] Button
Register Z-wave	None	Press [R] Button Hold for 6 seconds> [147]> [R] Button
Z-wave Delete		Press [R] Button Hold for 6 seconds> [369]> [R] Button
User Initialize	Factory Mode	Press [R] Button Hold for 9 seconds> [1478963]> [R] Button
Factory Mode Initialize	Mode	Press [R] Button Hold for 9 seconds> [1236547]> [R] Button