



Quick Start Guide

Contents

Cubo Ai at a Glance

Status Light Color Reference _____ Pg.1

In the Box _____ Pg.2

Choose your Set-up _____ Pg.3

Floor Stand _____ Pg.4-5

Crib Attachment _____ Pg.6-7

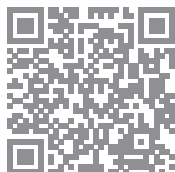
Mobile Stand _____ Pg.8

Removing Cubo Ai
from the Camera Holder _____ Pg.8

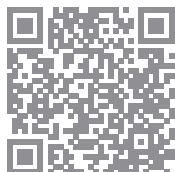
Removing the Stand from the Floor Base _____ Pg.8

Wi-Fi Connectivity

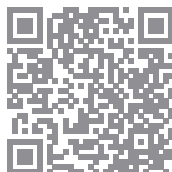
Arrange a safe crib environment _____ Pg.9



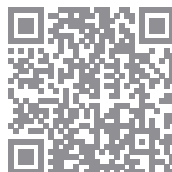
Schnellstart
Anleitung



Guide de
démarrage rapide



Guida rapida
all'installazione



Guía de
Inicio Rápido

Cubo Ai Plus at a Glance

Infrared Light for Night Vision

1080p HD Wide Angle Lens

Light Sensor

High-Sensitivity Microphone

Rotatable Lens (Manual)



Night Light

Speaker

Temp. & Humidity (T&H) Dongle

Status Light Color Reference



Status Light
(Can be turned off)

Multi-Purpose
Button

- **Sleep Mode**
To enter sleep mode, hold button for 3 seconds until you hear the sleep mode sound. Press the button once to resume activity.
- **Night Light :**
Press the button once to turn on and off the night light.



Solid White
Starting up



Solid Green
Working properly,
not streaming



Solid Blue
Streaming video



Solid Red
Wi-Fi disconnected



Pulsing White
Ready to connect

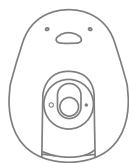


Blinking White/Green
Connecting to Wi-Fi

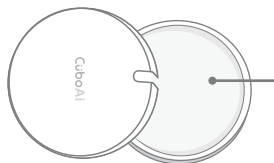


Pulsing Green
Sleep mode

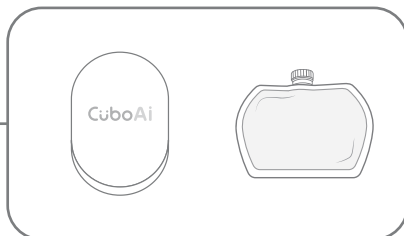
In the box



1 Cubo Ai Plus Baby Monitor



2 Floor Base



3 Crib Attachment

4 Water Bag



5 Mobile Stand



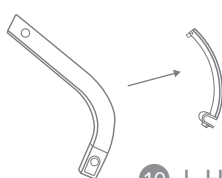
6 Temperature & Humidity (T&H) Dongle



7 Wall Plug Dongle



8 U-Shaped Element



9 L-Shaped Element

10 L-Hook



11 Stand Element x 3



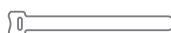
12 Stand Connector x 2



13 3 M Cable



14 2 M Cable
(Mobile stand use only)



15 Crib Stabilizer



16 Crib Stand Safety Cap

Choose your Set-up

Please follow the instructions according to your desired stand type

A. Floor Stand



- | | |
|-----------------------------|------------------------|
| 1 Cubo Ai Plus Baby Monitor | 9 L-Shaped Element |
| 2 Floor Base | 10 L-Hook |
| 4 Water Bag | 11 Stand Element x 3 |
| 6 T&H Dongle | 12 Stand Connector x 2 |
| 7 Wall Plug | 13 3 M Cable |
| 8 U-Shaped Element | 15 Crib Stabilizer |

B. Crib Attachment



- | | |
|-----------------------------|--------------------------|
| 1 Cubo Ai Plus Baby Monitor | 10 L-Hook |
| 3 Crib Attachment | 11 Stand Element x 3 |
| 6 T&H Dongle | 12 Stand Connector x 2 |
| 7 Wall Plug | 13 3 M Cable |
| 8 U-Shaped Element | 15 Crib Stabilizer |
| 9 L-Shaped Element | 16 Crib Stand Safety Cap |

C. Mobile Stand



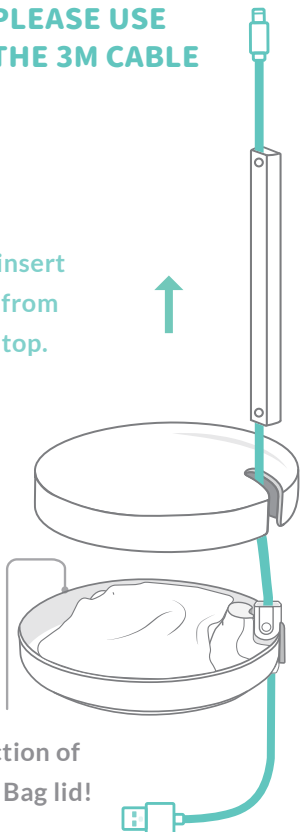
- | |
|-----------------------------|
| 1 Cubo Ai Plus Baby Monitor |
| 5 Mobile Stand |
| 6 T&H Dongle |
| 7 Wall Plug |
| 14 2 M Cable |

A. Floor Stand

1
STEP

ATTENTION!
PLEASE USE
THE 3 M CABLE

To install, insert
3 M Cable from
bottom to top.

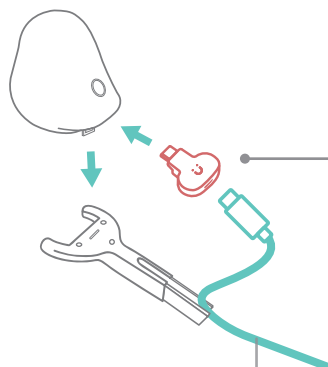


Note direction of
the Water Bag lid!



Fill with water until 90% full.
Place in Floor Base.

2
STEP



Allow 2" of cable.

Open the L-Shaped
Element to thread
3 M Cable through.



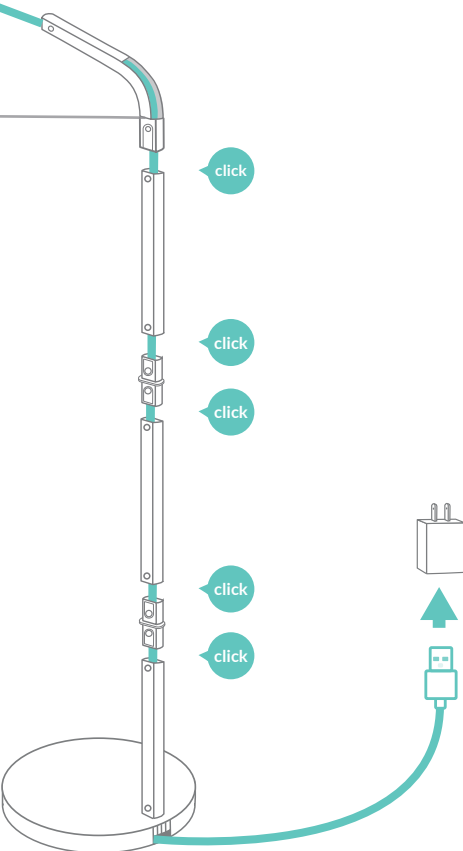


Scan to watch Video Tutorial

Connect the Temp.
& Humidity Dongle
to the 3 M Cable,
then connect to the
Cubo Ai Camera.



See Pg. 09 for how to
detach your Cubo Ai.



3
STEP

Install the Cubo Ai App
to complete set-up !

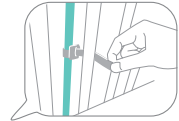
Download on the
App Store

GET IT ON
Google Play



Cubo Ai Smart Baby Monitor

COMPLETED
SET-UP



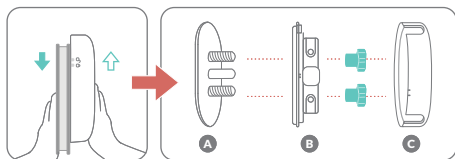
Reinforce stability
with Crib Stabilizer.



B. Crib Attachment

1-1 STEP

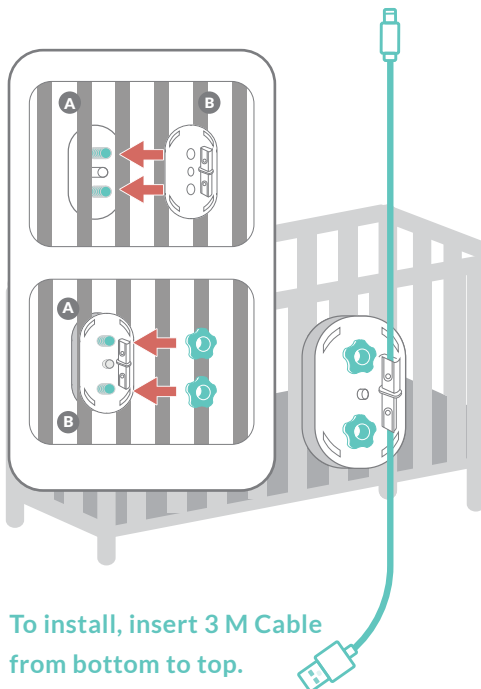
ATTENTION!
PLEASE USE
THE 3M CABLE



Slide up Crib Attachment to pull apart.

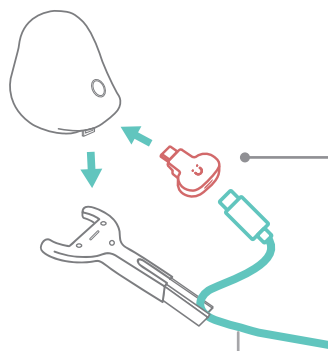
1-2 STEP

**MOUNT ON
THE CRIB**



To install, insert 3 M Cable
from bottom to top.

2 STEP

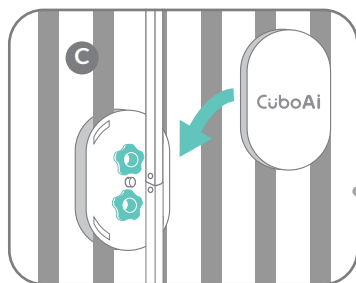


Allow 2" of cable.

Open the L-Shaped
Element to thread
3 M Cable through.



Close the cover

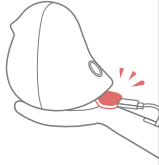


Add Crib Stand
Safety Cap.

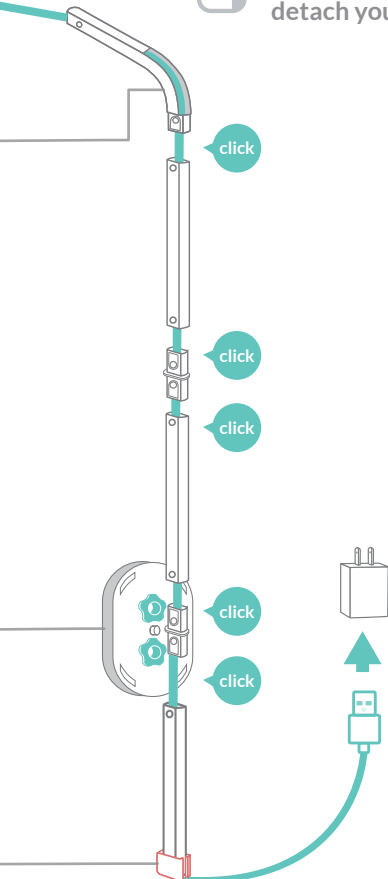


Scan to watch Video Tutorial

Connect the Temp. & Humidity Dongle to the 3 M Cable, then connect to the Cubo Ai Camera.



See Pg. 09 for how to detach your Cubo Ai.



3
STEP

Install the Cubo Ai App to complete set-up !

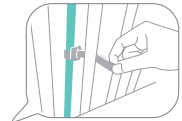
Download on the
App Store

GET IT ON
Google Play



Cubo Ai Smart Baby Monitor

COMPLETED
SET-UP



Reinforce stability
with Crib Stabilizer.

C. Mobile Stand

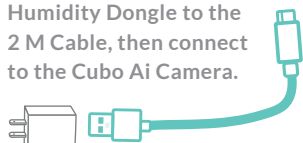


Scan to watch Video Tutorial

1

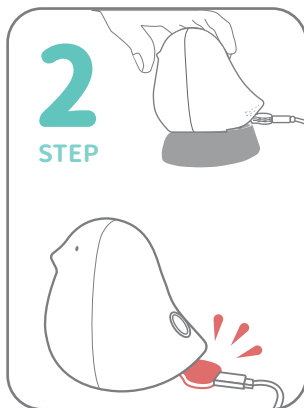
STEP

Connect the Temp. & Humidity Dongle to the 2 M Cable, then connect to the Cubo Ai Camera.



2

STEP



3

STEP

Install the Cubo Ai Appto complete set-up !



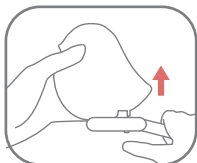
Cubo Ai Smart Baby Monitor

Removing Cubo from the Camera Holder

1 Release the Safety Lock.

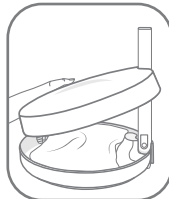


2 Lift Cubo Ai upward from the Camera Holder.



Removing the Stand from the Floor Base

1 Open the round Floor Base.



2 Press button to release, pull the Stand Element upward.



Wi-Fi Connectivity

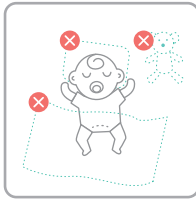
Make sure both your download/upload speed is at least 5 Mbps

- Test your connection speed by standing next to your Cubo Ai and head to <https://fast.com/> while connected to your Wi-Fi
- If your Wi-Fi speed is less than 5 Mbps you may need to contact your Internet provider to improve your Internet connectivity



For more details please scan:

Arrange a safe crib environment



Clear the crib!

- ✓ Don't add bumper pads to the bed rail, sleep in the same room as the baby, but not in the same bed.
- ✓ Avoid using pillows, toys, and blankets, wear a onesie to reduce the chance of accidental face coverage.
- ✓ The mattress should be hard enough so that baby's face won't sink in.



Sleeping on the back is safest!

Tummy sleeping could lead to indirect suffocation and cause hazards such as reduction in blood oxygen, increase in body temperature, and impact the autonomic nervous system.

Compliance and Precautions

1. Cubo Ai Smart Baby Monitor is not a medical device and should not be used as a SIDS (Sudden Infant Death Syndrome) prevention tool. Cubo Ai Smart Baby Monitor is designed to help caregivers monitor their baby. Caregivers must check their baby's condition regularly. For premature or potentially ill infants, this product should be used under the direction of a doctor or a medical professional. For more details, please refer to the product website or the terms of use and privacy policy on the App.

2. Please install Cubo Ai according to the instructions in the instruction manual. If the Cubo Ai Smart Baby Monitor and bracket are installed properly, it may prevent unnecessary accidents. Please follow the instructions in the manual.

Product name: Cubo Ai Smart Baby Monitor; **Model:** Angel Input 100-240V, Output: 5V2A, 2.4/5GHz Wi-Fi 2.4GHz Bluetooth Low Energy
Yun Yun AI Baby Camera Co., Ltd. 19F-4, No. 2, Ln. 150, Sec. 5, Xinyi Rd., Xinyi Dist., Taipei City 110, Taiwan
Yun Yun US Corporation 1108 S Baldwin Ave #107, Arcadia, CA 91007
Product liability insurance: This product has been insured by product liability insurance for \$1,000,000 USD.

FEDERAL COMMUNICATIONS COMMISSION INTERFERENCE STATEMENT

This equipment has been tested and found to comply with the limits for a Class B digital device, pursuant to Part 15 of the FCC Rules. These limits are designed to provide reasonable protection against harmful interference in a residential installation. This equipment generates, uses and can radiate radio frequency energy and, if not installed and used in accordance with the instructions, may cause harmful interference to radio communications. However, there is no guarantee that interference will not occur in a particular installation. If this equipment does cause harmful interference to radio or television reception, which can be determined by turning the equipment off and on, the user is encouraged to try to correct the interference by one or more of the following measures:

- Reorient or relocate the receiving antenna.
- Increase the separation between the equipment and receiver.
- Connect the equipment into an outlet on a circuit different from that to which the receiver is connected.
- Consult the dealer or an experienced radio/TV technician for help.

CAUTION:

Any changes or modifications not expressly approved by the party responsible for compliance could void the user's authority to operate the equipment.

This device complies with part 15 of the FCC Rules. Operation is subject to the following two conditions: (1) This device may not cause harmful interference, and (2) this device must accept any interference received, including interference that may cause undesired operation.

FCC RF Radiation Exposure Statement:

1. This Transmitter must not be co-located or operating in conjunction with any other antenna or transmitter.
2. This equipment complies with FCC RF radiation exposure limits set forth for an uncontrolled environment.

This equipment should be installed and operated with a minimum distance of 20 centimeters between the radiator and your body.

Hereby, Yun Yun AI Baby camera Co., Ltd. declares that the radio equipment type Cubo Ai Baby Monitor is in compliance with Directive 2014/53/EU and UK Radio Equipment Regulations 2017 SI 2017/1206.

The full text of the EU declaration of conformity is available at the following internet address
Yun Yun AI Baby Camera Co., Ltd. 19F-4, No.2, Ln. 150, Sec. 5, Xinyi Dist., Taipei City 110, Taiwan
Yun Yun US Corporation 1108 S Baldwin Ave #107, Arcadia, CA 91007

The frequency and maximum transmitted power in EU are listed as follows,
2412 - 2472 MHz: 19.93 dBm
5150 - 5250 MHz: 21.57 dBm
5250 - 5350 MHz: 19.68 dBm
5500 - 5700 MHz: 19.69 dBm

- WLAN 5GHz:
Operations in the 5.15-5.35GHz band are restricted to indoor usage only.

Need help?



Message us

Cubo Ai Smart Baby Monitor



In-App Chat Support

App Setting > Chat with Us



Email Us

support@getcubo.com

Share Cubo Ai with even more parents!



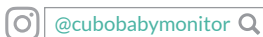
Recommend
to Friends

Earn rewards for each
successful referral!



Join the Cubo Ai
Community

Search for us on Instagram



Love your Cubo Ai?
Share your story!

Email us your photos for the
chance to win a small gift
parents@getcubo.com