



This guide is designed to help you to get your LCA (802.11ac indoor CPE device) up and running right away. It contains information on setting up your network and configuring for internet access.
LCA-C (LC0) -> CPE for Dual band Wide coverage, GE
LCA-F (LCF) -> CPE for Dual band, FE

WARNING!

- Do**
- 1) Plug either DC-IN jack (1) or PoE-IN port (2) to AC/DC adapter or PoE injector for PoE output at WAN port (3) and LAN port (4). (Note: Both WAN and LAN ports are enable PoE output by software control.)
 - 2) Use LAN port (4) for Wired Internet Access as its PoE output function is default "OFF".
- Don't**
- 3) Don't use PoE injector or AC/DC adapter which output DV voltage is out of recommended range (12V ~ 24V).
 - 4) Don't connect both DC-IN jack (1) and PoE-IN port (2) to AC/DC adapters simultaneously.
 - 5) Don't connect LAN port (4) to PC for Wired Internet Access if its PoE output function is requested to remotely "ON" by service Engineer.

See the port and connector numbering in Appendix A.

Safety Warnings

- Do not expose the device to corrosive liquids.
- Do not install, use or service this device during a thunderstorm. There is a remote risk of electric shock from lightning.
- Do not open the device. Only qualified service personnel should service or disassemble the device.
- Make sure to connect the cables to the correct ports.

SETUP REQUIREMENTS

- A computer running Windows 10, Linux (procedures for other OS's are similar)
- Cat 5/6 cable
- AC Power Source (110VAC or 230VAC) for AC/DC adapter or PoE injector

INSTALLATION STEPS

STEP 1 : CONNECT LCA FOR POWER AND DATA COMMUNICATION

- 1(a) Connect 12V AC/DC adapter to AC power source (110VAC or 230VAC) then DC jack is plugged into DC-IN port (1). Or Connect 24V PoE injector to AC power source (110VAC or 230VAC) then PoE port of PoE injector is connected to PoE-IN port (2) of LCA using Cat 5/6 Ethernet cable.
- 1(b) Connect LAN port (4) of LCA to LAN port of PC using Cat 5/6 Ethernet cable.
- 1(c) Verify that PWR LED on the external enclosure is GREEN.

STEP 2 : PREPARE YOUR COMPUTER FOR LCA SETUP

- 2(a) On your Windows 10 computer, configure TCP/IP Properties of the Wireless Connection on your computer as follows

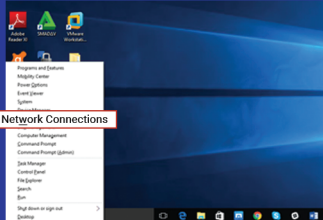


Figure 1. Network Connections menu

(To check the IP address of the computer, click on the Windows Key and Press X at the same time then click on the menus : Network Connections)

Right click on Wi-Fi > Properties

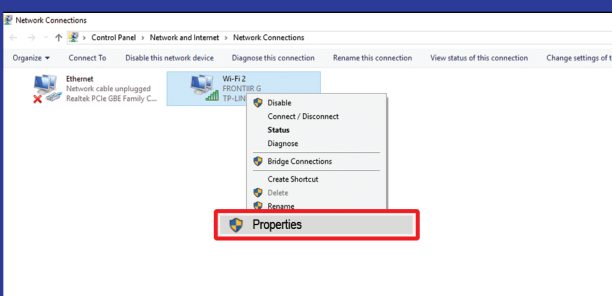


Figure 2. Wi-Fi properties

Click on Internet Protocol Version 4 (TCP/IPv4) > Properties (The TCP/IPV4 Properties dialog box appears.)

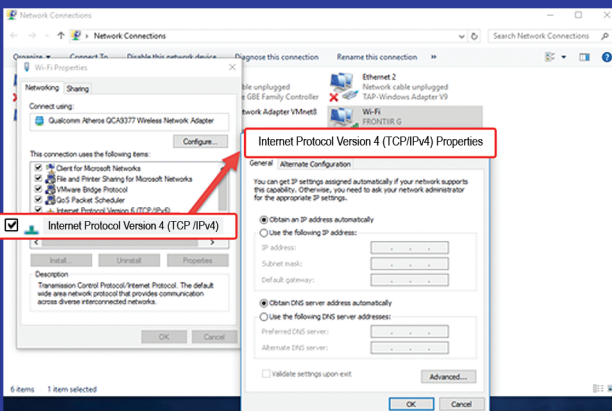


Figure 3. TCP/IPv4 properties

2(b) Select "Obtain an IP automatically". OR

- Select "Use the following IP address"
For LCB IP address is 192.168.99.1, input your IP and DNS information.
- IP address: 192.168.99.X (X is from 2 to 254)
Subnet mask: 255.255.255.0
Leave the Default gateway fields and DNS information empty.

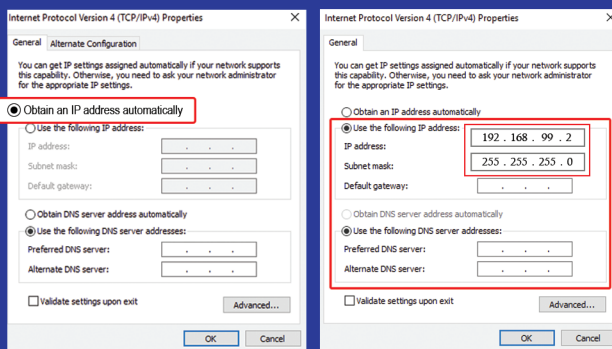


Figure 4. IP address settings

2(c) Click OK to save and apply your settings.

正面

STEP 3 : PLACE YOUR LCA IN YOUR SITE

- 3(a) Allocate LCA to a place where DC power is easily accessible.
Please note that LCA is for indoor usage only.

- 3(b) Connect the LCA to one of the power options as follows:

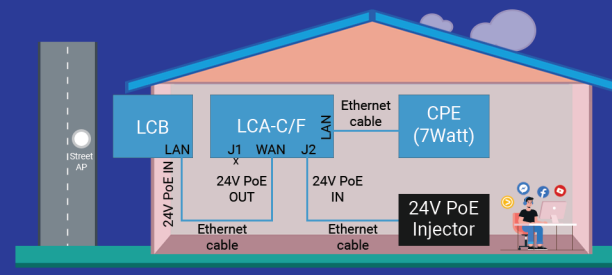


Figure 5. Set-up block diagram for standard power option

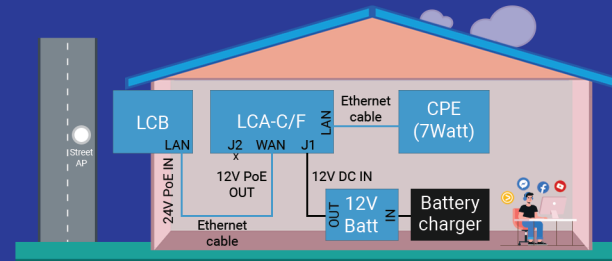


Figure 6. Set-up block diagram for 12V battery option

- 3(c) Connect LCA WAN port (3) to PoE input port of 5G radio outdoor device.
- 3(d) PWR and WAN LEDs on the external enclosure are GREEN.

STEP 4 : ACCESS INTERNET BY YOUR DEVICE WIFI

- 4(a) CPE Service ID Card



Figure 7. Sample CPE Service ID Card

- 4(b) Click on Wi-Fi icon, then click on "Network settings"

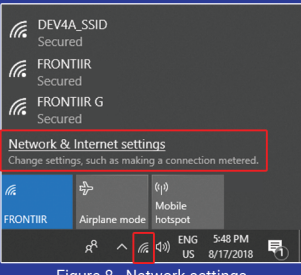


Figure 8. Network settings

- 4(c) Click on "Hidden Network" and key in SSID

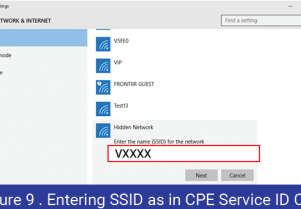


Figure 9. Entering SSID as in CPE Service ID Card

- 4(d) Enter the network security key

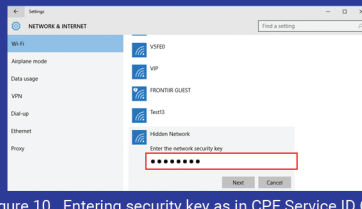


Figure 10. Entering security key as in CPE Service ID Card

- 4(e) Click "No" if you do not want to allow your PC to be discoverable by other PCs and devices on this network.

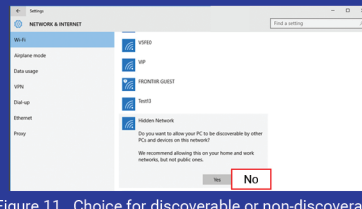


Figure 11. Choice for discoverable or non-discoverable

- 4(f) Now SSID is connected.

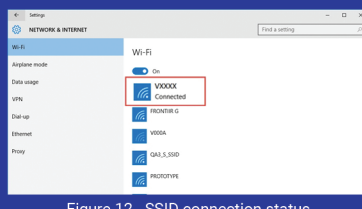


Figure 12. SSID connection status

Your Wi-Fi is connected to SSID and Ready to use Now!

Appendix A

Ports and Button: DC-IN, PoE-IN, WAN, LAN, RESET

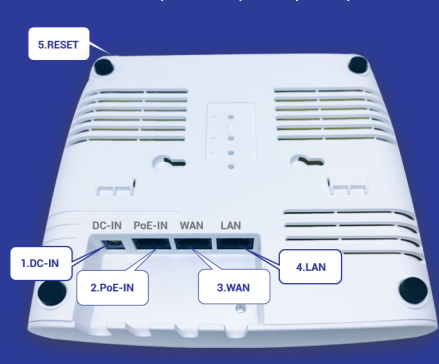
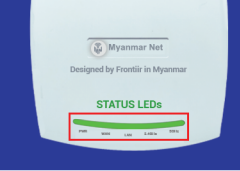


Figure 13. Four Ports and One Button

- 1) DC-IN
This is a 12VDC input port. Any 12V, 18W adapters are usable.
- 2) PoE-IN
This is a 24VDC PoE input port. Any PoE injectors with + (4, 5) pins and - (7, 8) pins are usable.
- 3) WAN
This is the WAN port. This Ethernet port will connect with its uplink 5G radio.
- 4) LAN
This is the LAN port. This Ethernet port can be used for wired internet access and configured as POE 24V output for the extended Routers with PoE input port.
- 5) RESET
Brief press = Reboot the LCA.
>9 sec = Factory reset the LCA.

Appendix B

LED: STATUS



LED Definition	
LCA Case Label	LCA LED Description Condition
PWR	On if Power is connected, Off if Power is not connected
WAN	Flashing On/Off if WAN Ethernet port is connected and receiving/transmitting data (PoE out on or off). Blinking if PoE out is active and port not connected. Off if PoE out is not active and Port is not connected.
LAN	Flashing On/Off if LAN Ethernet port is connected and receiving/transmitting data (PoE out on or off). Blinking if PoE out is active and port not connected. Off if PoE out is not active and Port is not connected.
2.4 GHz	On if internet available. Flashing On/Off if 2G radio is connected and internet available. Off if 2G radio is not connected
5 GHz	On if internet available. Flashing On/Off if 5G radio is connected and internet available. Off if 5G radio is not connected

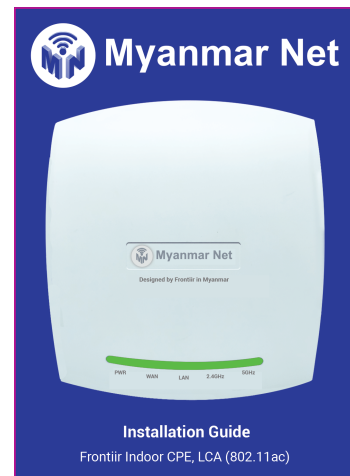
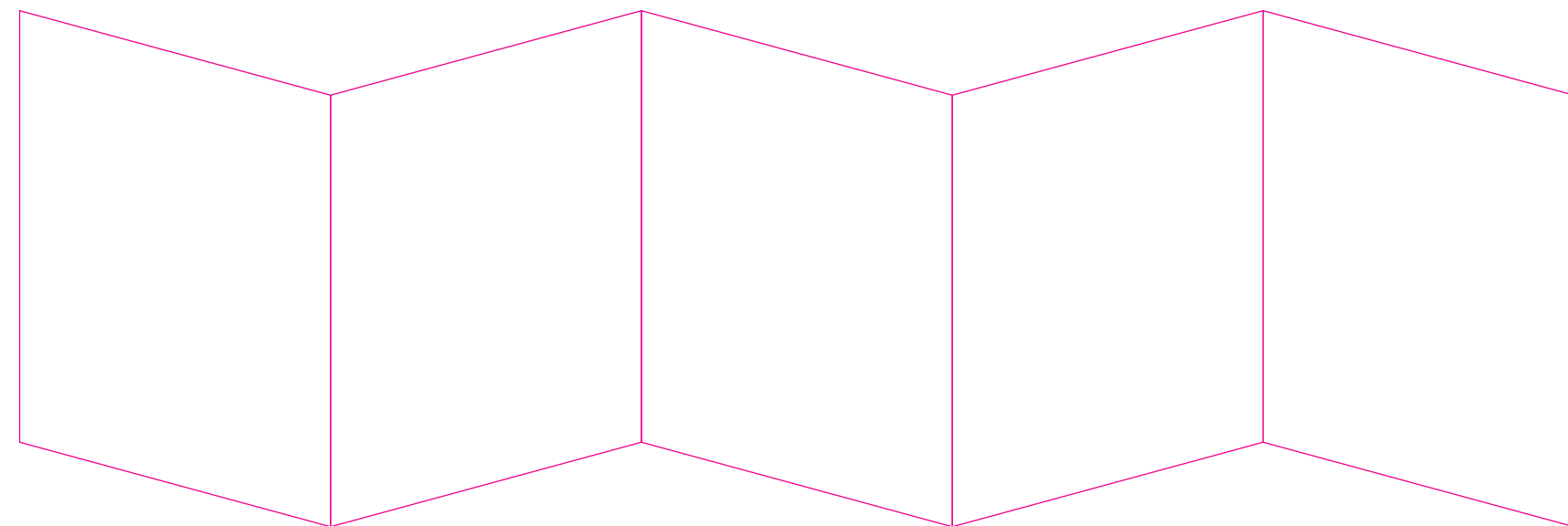
PACKAGE CONTENTS : 1. One LCA , 2. One Quick User Guide in English

Myanmar Net

09 76 533 8440
09 76 533 8441
MyanmarNetInternet
MyanmarNet.com

反面

成型方式:



(材質): 128G 特級銅版

(顏色): CMYK(C:98% M:93%)

(上光方式): NO

(尺寸): 展開尺寸:450X125mm

成型尺寸:90*125mm

(公差): +-1 mm



LIMITS UNLESS OTHERWISE NOTED	
X. +-	X. ° +-
.X +-	.X ° +-
.XX +-	.XX ° +-
.XXX +-	.XXX ° +-

A4	UNIT	SCALE	SHEET	MODEL No.	for WP8324-FT&WP8324G-FT			
	MM	NON	1(1)	PART NAME	QSG			
APPROVED	CHECKED	DESIGNED		PART No.	515300196947		REV	A2
		Dereck 蔣飛龍 2020-02-12		LITEON 光寶科技股份有限公司 LITE-ON TECHNOLOGY CORP.				

Federal Communication Commission Interference Statement

This equipment has been tested and found to comply with the limits for a Class B digital device, pursuant to Part 15 of the FCC Rules. These limits are designed to provide reasonable protection against harmful interference in a residential installation. This equipment generates, uses, and can radiate radio frequency energy and, if not installed and used in accordance with the instructions, may cause harmful interference to radio communications. However, there is no guarantee that interference will not occur in a particular installation. If this equipment does cause harmful interference to radio or television reception, which can be determined by turning the equipment off and on, the user is encouraged to try to correct the interference by one or more of the following measures:

- Reorient or relocate the receiving antenna.
- Increase the separation between the equipment and receiver.
- Connect the equipment into an outlet on a circuit different from that to which the receiver is connected.
- Consult the dealer or an experienced radio/TV technician for help.

FCC Caution (15.19 statement)

This device complies with Part 15 of the FCC Rules. Operation is subject to the following two conditions: (1) This device may not cause harmful interference, and (2) this device must accept any interference received, including interference that may cause undesired operation.

Non-modification Statement:

Changes or modifications not expressly approved by the party responsible for compliance could void the user's authority to operate the equipment.

FCC Radiation Exposure Statement:

This equipment complies with FCC radiation exposure limits set forth for an uncontrolled environment. This equipment should be installed and operated with minimum distance 24cm between the radiator & your body.

This device is restricted to indoor use.