

# Smart Wi-Fi Plug

User's Manual

START YOUR SMART LIFE

## **Socket indicator**

1. When the indicator light is on, it means the socket has been connected.
2. When the indicator light goes out, it means the socket has been disconnected.
3. When the indicator light flashes, it means the socket is connecting.

## **Technical parameters of socket**

1. Maximum current: 16A
2. Rated voltage: 100~250V
3. Power frequency: 50~60HZ
4. Built-in safety circuit
5. Support Android and iOS system to remote control

6. Support manually, timing, countdown to control
7. Support amazon echo and Google Home to voice control

### **Register and login**

Users can search for the App “Smart Life” on Google Play or App store or scan the following QR code to download and install. After the installation is completed, register and login.

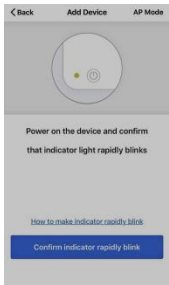
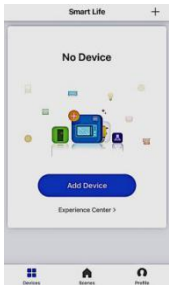


## **Add device**

● Connect to the network with the default Mode:

Open the App, click on the “+” icon on the upper right corner of the home page to enter the Add Device List, select socket to enter the Add Device Interface, and power on the Socket, long press the power

button for more than 5 seconds until indicator light flashes quickly, according to the App interface prompt, confirm indicator rapidly blink, enter the input WIFI interface, input WIFI password, enter the connection interface. As the following picture shows:



●Connect to the network with AP mode:  
If the connection in the default mode is not successful, you can try the AP mode on the upper right corner of the Add Device page. The steps are the same as the default mode.

## **Connection**

When “successfully added a device” Appears, the connection is successful. Then enter the interface of the control socket, you can control the socket anytime and anywhere, you can also share the device with your family or friends.

**Tips:** This WiFi socket supports 2.4G WiFi band pairing connection. Please connect the mobile WiFi source to the 2.4G band for pairing before connecting.

### **Socket control**

- 1.Remote control switch: The mobile phone and smart socket need to connect network at the same time, do not need to be in the same wireless network.
- 2.Time switch: The time for opening and closing of the socket can be set through the “Timer” icon at the bottom of the App interface.



3.Countdown switch: Click the “count-down” icon under the App to enter the “countdown switch settings” interface; if the socket is in off state at this time, then countdown to perform the “open” action, for example: The socket is off, then set a countdown time of 30 minutes,30 minutes later, the socket will automatically turn on.

4.Manually control: In the absence of any network, the mechanical buttons on the socket, you can manually control the opening and closing of the socket.

## Using amazon echo quick guide:



How to control your device via Echo

### **Step 1: Add device**

Make sure there's at least one device that supports Amazon Echo in device list.

### **Step 2: Modify device name**

Make device name that Echo could easily recognize. Such as: living room light, bedroom light.

### **Step 3: Set up Echo**

Use Alexa App or computer (<http://alexa.amazon.com>).

Set up Echo from “settings”.

#### **Step 4: Add Skill**

Add “Skill” in alexa App. Enable “Smart Life”, then fill in the correct login into your App account to finish the account linking.

#### **Step 5: Control Device**

Ask Alexa to discover devices. After 20 seconds discovery, Alexa will tell you “I found x devices”. Then you can control your devices through Echo.

The following voice commands are supported:

Alexa, turn on the plug.

Alexa, set the bedroom light to 35%.

Alexa, brighten the bedroom light.

Alexa, set the kitchen light to green.

Alexa, set the air conditioner to 65°F.

## Using Google Home quick guide:



GoogleHome

How to control your device via Google Home

### **Step 1: Add device**

Make sure there's at least one device that support Google Home in device list.

### **Step 2: Modify device name**

Change device name to a easily recognized one. Such as: living room light, bedroom light.

### **Step 3: Set up Google Home**

Make sure phone system language is English. Then use Home App to set up

Google Home.

**Step 4: Add Home Control Action**

Add device in Home Control of the Home App. Select “Smart Life”, then fill in the correct login info of your App account to finish the account linking. Your device should be listed in Home Control device list now.

**Step 5: Control device**

Now you can control devices through Google Home. The following voice commands are supported:

Ok Google, turn on the plug.

Ok Google, set bedroom light to 35%.

Ok Google, brighten bedroom light.

Ok Google, kitchen light to green.

Find “Smart Life” in the list. In the new window, select your Smart Life account region, type your Smart Life account and password, then tap “Link Now”. After you assign rooms for devices, your devices will be listed in the Home Control page.

## **Frequent questions**

Failed to add device:

- 1.Ensure that the device is powered on and turned on.
- 2.Make sure that the device, mobile phone and the router are close, the password is correct, and the mobile phone network is unblocked.

The device offline:

- 1.Check whether the network where the device is located is stable and confirm, whether the home network is normal.
- 2.Try restarting and wait for three minutes to observe the device status.



How to cancel the countdown setting:  
Please set the countdown time to 0 hour  
and 0 minute to cancel the countdown.

## **Notes**

- 1.If the smart socket is used for a long time, the wireless router must not be turned off, otherwise remote connection cannot be reached.
- 2.The charged socket wiring board and the like products shall be placed in the positions where infants cannot reach so as to avoid accidents.

3.The operational environment of the smart socket shall be water-proof, moisture-proof and sun-proof.

4.In order to prevent the risk of electric shock, non-professionals shall not disassemble and repair this product.

S12 20180625

NOTE: This equipment has been tested and found to comply with the limits for a Class B digital device, pursuant to part 15 of the FCC Rules. These limits are designed to provide reasonable protection against harmful interference in a residential installation. This equipment generates uses and can radiate radio frequency energy and, if not installed and used in accordance with the instructions, may cause harmful interference to radio communications. However, there is no guarantee that interference will not occur in a particular installation. If this equipment does cause harmful interference to radio or television reception, which can be determined by turning the equipment off and on, the user is encouraged to try to correct the interference by one or more of the following measures:

- Reorient or relocate the receiving antenna.
- Increase the separation between the equipment and receiver.
- Connect the equipment into an outlet on a circuit different from that to which the receiver is connected.
- Consult the dealer or an experienced radio/TV technician for help

Changes or modifications not expressly approved by the party responsible for compliance could void the user's authority to operate the equipment.

This device complies with Part 15 of the FCC Rules. Operation is subject to the following two conditions:

- (1) this device may not cause harmful interference, and
- (2) this device must accept any interference received, including interference that may cause undesired operation.

This device is acting as slave and operating in the 2.4 GHz (2412 ~2462 MHz) band. Ad Hoc function is supported but not able to operate on non-US frequencies.

#### FCC Radio Frequency Exposure Statement

The device has been evaluated to meet general RF exposure requirements. The device can be used in fixed/mobile exposure conditions. The min separation distance is 20cm.