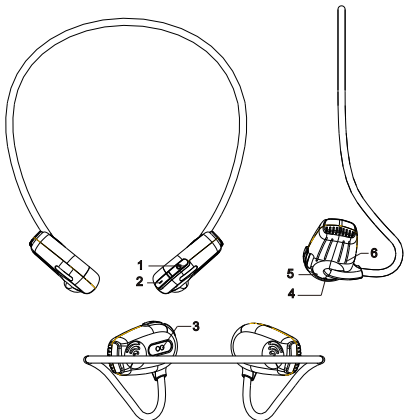


气导无线耳机



说明书

按键功能概述



1. 开机/关机/音量增加/下一曲
2. 音量减小/上一曲
3. 磁吸充电口
4. LED指示灯
5. 通话麦克风
6. 通话降噪麦克风

控制说明

开机: 耳机处于关机状态，长按开机键，保持3秒，LED蓝光闪亮，提示音：power on；
关机: 耳机处于开机状态，长按开机键，保持5秒，LED红灯闪一下关机，提示音：power off；
链接BT: 关机状态，长按开机键3秒，进入配对状态，LED指示灯红蓝光闪烁，耳机提示音：Pairing；设备（智能手机、平板电脑等）搜索到BH830，点击连接；
链接成功: 耳机成功连接至设备时，耳机提示音：Connected，LED蓝光5秒闪一下；
暂停/播放: BT连接音乐播放状态下，双击开机键为暂停，再双击为播放；
接听/挂断
来电状态下：单击开机键为接听，长按2秒开机键为拒接电话；
通话状态下：单击开机键为挂断；
音量增加: 单击音量增加键；
音量减小: 单击音量减小键；
下一曲: 音乐播放状态下，长按音量加2秒；
上一曲: 音乐播放状态下，长按音量减2秒；
语音助手: BT连接状态，三击开机键进入语音助手，再三击开机键退出语音助手；
清除配对信息: 关机状态下开机键和音量减键同时

长按5秒清除配对信息，红蓝光同时闪烁1秒
充电: 使用充电线时，将耳机插入USB电源，充电状态下，LED指示灯为红色，充电完成时，则为蓝色；

佩戴说明



将耳机挂在颈后，两侧的扬声器贴在面颊骨，调整佩戴的舒适度

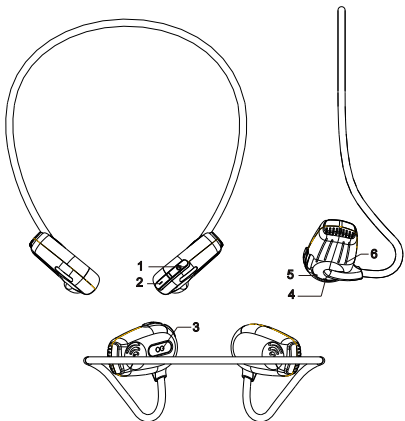
产品规格

音乐播放时间-----7小时(80%音量)
待机时间-----20天
充电时间-----1.5小时
BT版本-----5.3
喇叭阻抗-----16Ω±15%
麦克灵敏度-----42±3db
产品重量-----18g±2g
连接距离-----15米
充电电压/电流-----5V/0.5A

重要说明

• 本款耳机骨传导扬声器的正确佩戴位置为耳朵前方的面颊骨处，请勿将骨传导扬声器置于耳内；
• 长时间听大音量的音乐可能会带来不适感，请尽可能使用中等左右的音量，避免长时间使用大音量；
• 无论音量大小，使用耳机都将影响您对周围环境声音的感知，使用耳机时多加注意；
• 切勿抛扔、坐压耳机或将其浸入水中；
• 耳机应远离火、水和高压设备；
• 不适合三岁以下儿童使用，包含小零件；
• 请勿将其归类为生活垃圾，而将其送往当地相应的电器电子设备回收站；
若用户因违反以上警告内容造成的人身财产损失，本公司不承担任何责任

Summary of button functions



1. Power On/ Power Off/ Volume up/Next song
2. Volume down/Previous song
3. Magnetic charging port
4. LED indicator
5. Microphone Call
6. Call Noise Cancelling Microphone

Controls

On: When the headphone is in power-off state, press and hold power button for 3 seconds with blue LED flickering, reminding tone: power on.
Off: When the headphone is in power-on state, press and hold power button for 5 seconds with red LED flickering once, reminding tone: power off.
Connect BT: When the headphone is in power-off state, press and hold it for 3 seconds to enter a pairing state with red and blue LEDs flickering and reminding tone: pairing. After the device (smart phone, tablet computer, etc.) discovers BH830, press it to connect.
Connected successfully: When the headphone is successfully linked to the device, blue LED will flicker every 5 seconds with reminding tone: Connected
Pause/play: In the BT connection music playback state, Double-click the boot button to pause, and double-click externally to play.
Answer/hang up: In the incoming call state: click the Power on key to answer, long press the Power on key for 2 seconds to reject the call. In the call state, click the Power on key to hang up
Vol+: Press the Vol+ once to turn up the volume.
Vol-: Press the Vol- once to turn down the volume.
The next song: Long press "V+" for 2 seconds when music is playing
In a song: Long press "V-" for 2 seconds when music is playing
Voice assistant: Keep BT link, Three click the boot button to enter the voice assistant, and then three times the boot button to exit the voice assistant.
Reset: After plugging the charging line, the headphone will be reset and powered off for charging.
Clear pairing information: Press the power button and the volume off button for 5 seconds to clear the pairing information in shutdown mode, Red and Blue light blinks 1 second spontaneously

Charging: In case of using charging line for charging, connect the headphone with the USB power. During the charging, LED turns red. After charging, the LED turns blue.

How to wear



Hang the headphone behind your neck with both speakers clinging to your cheekbones. After that, adjust it until you feel comfortable.

Specifications

Music play time-----7 hours(80% volume)
Standby time-----20 days
Charging time-----1.5 hours
BT version-----5.3
Speaker impedance-----16Ω±15%
Microphone sensitivity-----42±3db
Product weight-----18g±2g
Connection distance-----15 meters
Charging voltage/current-----5V/0.5A

Attentions

• Please wear the bone-conduction speakers of the headphone at your cheekbones before your ears and do not put them in your ears.
• Listening to music for an excessive long time mayake you feel uncomfortable, please try to use a medium volume instead of a big one.
• No matter how the volume is, please do not make it prevent you from hearing the surrounding sounds. Please take care when using the headphone.
• Do not throw, press the headphone or put it in the water.
• The headphone should keep away from fire, water and high voltage devices.
• It is not for children's use as it contains small parts.
• Please do not treat it as domestic waste. Instead, send it to your electrical and electronic recycling station.
If there is any injury or property loss due to violation of the above contents, we will not bear any responsibility.

Manual Instruction for
Air Conduction
Wireless Headphones

FCC Caution:

This device complies with part 15 of the FCC Rules. Operation is subject to the following two conditions: (1) This device may not cause harmful interference, and (2) this device must accept any interference received, including interference that may cause undesired operation.

Any Changes or modifications not expressly approved by the party responsible for compliance could void the user's authority to operate the equipment.

Note: This equipment has been tested and found to comply with the limits for a Class B digital device, pursuant to part 15 of the FCC Rules. These limits are designed to provide reasonable protection against harmful interference in a residential installation. This equipment generates uses and can radiate radio frequency energy and, if not installed and used in accordance with the instructions, may cause harmful interference to radio communications. However, there is no guarantee that interference will not occur in a particular installation. If this equipment does cause harmful interference to radio or television reception, which can be determined by turning the equipment off and on, the user is encouraged to try to correct the interference by one or more of the following measures:

- Reorient or relocate the receiving antenna.
- Increase the separation between the equipment and receiver.
- Connect the equipment into an outlet on a circuit different from that to which the receiver is connected.
- Consult the dealer or an experienced radio/TV technician for help.

The device has been evaluated to meet general RF exposure requirement. The device can be used in portable exposure condition without restriction.