

LIMITLESS

Desktop Wireless Charger with Retractable Cables

Quick Start Guide



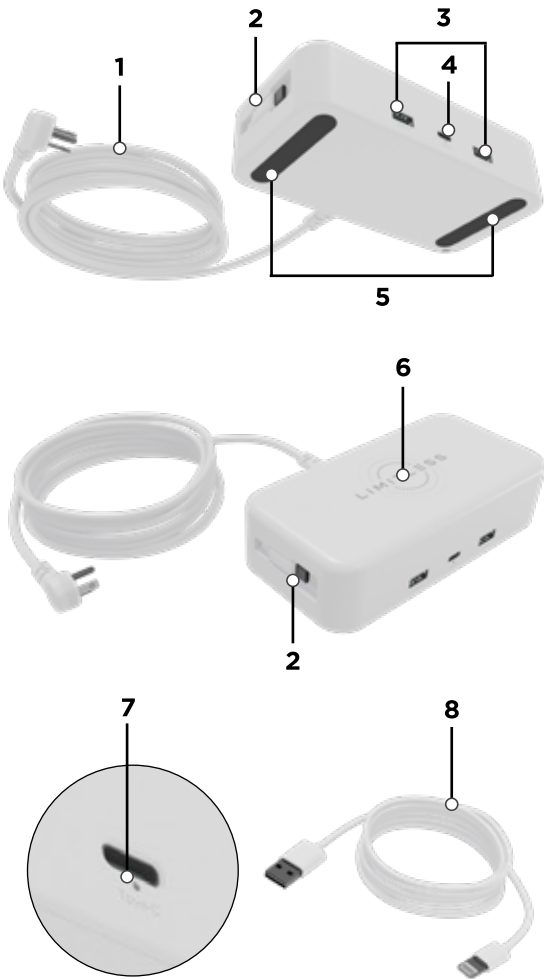
WHAT'S INCLUDED

- (1) Limitless Desktop Wireless Charger with Retractable Cables
- (1) 6ft Detachable AC Power Cord w/90-Degree Plug
- (1) 24" USB to Lightning® Charging Cable



COMPONENTS

1. Detachable AC Power Cord
2. 2x Retractable Type-C Cables
3. 2x USB Charging Ports
4. 1x Type-C Charging Port
5. Non-Skid Pads
6. Wireless Charger
7. LED Power Indicator Light
8. 24" USB to Lightning® Charging Cable



TECH SPECS

Model: LIM-DTCRC-M001

AC Input: 100-240V | 50/60Hz | 2A

24" Retractable Type-C Cable Output 1 & Output 2:
PD 65W | 5V≡3A, 9V≡3A, 12V≡3A, 15V≡3A, 20V≡3.25A

Wireless Charging Output: 15W | 7.5W | 5W

Type-C Output: PD 65W | 5V≡3A, 9V≡3A, 12V≡3A, 15V≡3A, 20V≡3.25A

USB-A Output: QC. 22.5W | 5V≡3A, 9V≡2A, 12V≡1.5A, 10V≡2.25A

Total Output: (Type-C Cable Output 1+Type-C Cable Output 2+Type-C Output+USB-A Output)+Wireless Charging Output:(5.0V≡3.0A)+15W

Dimensions: 6.30" x 3.15" x 1.57"

Weight: .79 lbs

FCC Statement:

This device complies with Part 15 of the FCC Rules. Operation is subject to the following two conditions:

(1) This device may not cause harmful interference, and (2) this device must accept any interference received, including interference that may cause undesired operation.

WARNING: Changes or modifications not expressly approved by the party responsible for compliance could void the user's authority to operate the equipment.

USING THE CHARGER

Using the Desktop Charger:

Plug the AC Power Cord into the AC Input of the Desktop Wireless Charger. Plug the opposite end of the AC Power Cord into a wall outlet. The LED Power Indicator Light will illuminate.

Select your compatible charging method from below:

- Retractable Type-C Cables
- USB Ports
- Type-C Port
- Wireless Charger

Extending the Type-C Cable:

Hold the Desktop Wireless Charger with one hand while extending the cables to keep it in place. Extend the Cable to a desired length and connect the Type-C end to a compatible device. The device will begin to charge. **Note:** The Retractable Cable can stop at any point up to 24".

Retracting the Type-C Cable:

Gently pull the cable outward until you hear a slight click or feel resistance, then slowly release it. The internal spring mechanism will automatically reel the cable back into the charger. When not in use, ensure the cable is fully retracted to prevent damage or tangling.

Note: Do not overextend the cable. Doing so may damage the Desktop Wireless Charger.

USING THE CHARGER

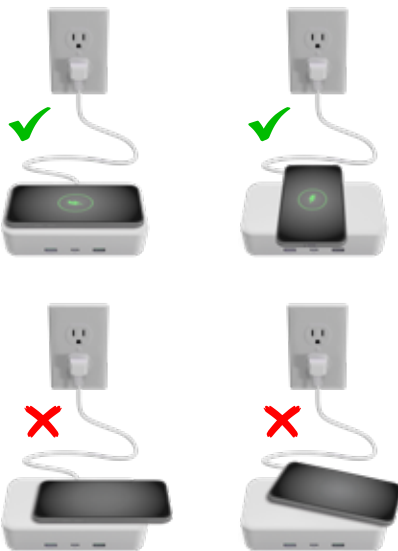
Charging via Type-C or USB Ports:

Plug a compatible cable into one of the ports, and plug the opposite end into a device. The device will begin to charge.

Charging via Wireless Charger:

Place your compatible device on top of the Wireless Charger. If there is a successful connection, the device will begin to charge.

See below for Wireless Charging placement.



WAIVER & RELEASE

By using the Limitless Desktop Wireless Charger with Retractable Cables (Desktop Charger), you hereby agree that Limitless Innovations, Inc., an Illinois corporation and its affiliates ("Limitless") shall have no liability for any losses associated with property damage, personal injury or loss of life that are incurred by you or by any third party in connection with or relating in any manner whatsoever to your use of the Desktop Charger. By using the Desktop Wireless Charger, you hereby agree at all times to comply fully with all safety warnings, operating instructions and general safety information in this user manual. By using the Desktop Wireless Charger, you further agree to hold harmless Limitless, (and Limitless' officers, directors, shareholders and employees) in connection with any losses sustained by you (including, without limitation, losses arising in whole or in part from property damage, personal injury or loss of life) relating in any manner whatsoever to your use of the Desktop Wireless Charger.

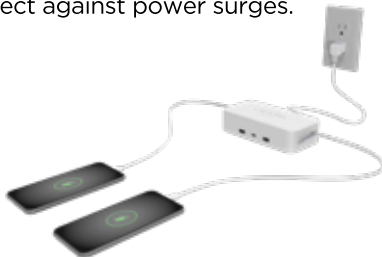
Scan to learn more about using the features of your Desktop Wireless Charger with Retractable Cables.



WARNINGS

- The Desktop Wireless Charger is **NOT** a toy and should be kept away from children.
- Do **NOT** use the Desktop Wireless Charger near a magnetic or electric field.
- Keep the Desktop Wireless Charger in a cool and dry place away from heat sources, moisture, and dust. Avoid leaving the device in places with high temperatures, such as cars parked under the sun.
- Do **NOT** use the Desktop Wireless Charger if it has been damaged and/or modified.
- Do **NOT** submerge the Desktop Wireless Charger or its accessories in water.
- Do **NOT** insert any foreign objects into the ports or joining terminals of the device. Short circuits may present risks of excessive heat, fire or explosion.
- Be cautious of drops, bumps, abrasions, or other impacts to the Desktop Wireless Charger. If there is any damage to the device such as dents, punctures, tears, deformities, or corrosion due to any cause, discontinue use. Contact Limitless Innovations or dispose of it in accordance to state and local guidelines.
- Do **NOT** attempt to disassemble, repair, or open the Desktop Wireless Charger or its accessories in any way.
- When charging a device, the Desktop Wireless Charger may feel warm, this is a normal operating condition and should not be cause for concern.

- All products have gone through a thorough quality assurance inspection. If you find that your Desktop Wireless Charger is excessively hot, is emitting odor, is deformed, abraded, cut, or is experiencing or demonstrating an abnormal phenomenon, immediately stop all product use and contact Limitless Innovations.
- Do **NOT** subject the Desktop Wireless Charger to harsh chemicals.
- Do **NOT** paint or apply coatings to the Desktop Wireless Charger as you might affect moving parts or damage internal components.
- Do **NOT** drop or apply excessive force to the Desktop Wireless Charger. By doing so, it may damage the internal components of the device, and risk short circuiting the device when used.
- **CAUTION:** Risk of fire and burns. Do **NOT** open, crush, heat above 140° F (60° C) or incinerate.
- The Desktop Wireless Charger does **NOT** protect against power surges.



LIMITLESS

Designed in USA. Made in Vietnam.

All rights reserved. Limitless™ is a trademark of Limitless Innovations, Inc.

Design and specifications subject to change without notice. Products may vary from images shown. All other trademarks included herein are property of their respective owners. Accessories sold separately.

LimitlessInnovations.com

Support@LimitlessInnovations.com
(855) 843-4828

© **Limitless Innovations, Inc.**



@LimitlessInnovations



/LimitlessInnov



/LimitlessInnov



/LimitlessInnov



Limitless Innovations

15.105 Information to the user.

Note: This equipment has been tested and found to comply with the limits for a Class B digital device, pursuant to part 15 of the FCC Rules. These limits

are designed to provide reasonable protection against harmful interference in a residential installation. This equipment generates uses and can radiate radio frequency energy and, if not installed and used in accordance with the instructions, may cause harmful interference to radio communications.

However, there is no guarantee that interference will not occur in a particular installation. If this equipment does cause harmful interference to radio or television reception, which can be determined by turning the equipment off and on, the user is encouraged to try to correct the interference by one or more of the following measures:

- Reorient or relocate the receiving antenna.
- Increase the separation between the equipment and receiver.
- Connect the equipment into an outlet on a circuit different from that to which the receiver is connected.
- Consult the dealer or an experienced radio/TV technician for help.

FCC RF Radiation Exposure Statement:

1. This Transmitter must not be co-located or operating in conjunction with any other antenna or transmitter.
2. This equipment complies with RF radiation exposure limits set forth for an uncontrolled environment.
3. This equipment should be installed and operated with minimum distance 20cm between the radiator and your body.