



TEST REPORT

FCC PART 15 SUBPART C 15.247

Test report

On Behalf of

V-Mark Enterprises Ltd.

For

Temp tag

Model No.: VRKRTS04WREG01, VRKRTS04WREG02

FCC ID: 2AQ7V-KRGEN2TS001

Prepared For : V-Mark Enterprises Ltd.

400-601 West Broadway, Vancouver, British Columbia, Canada

Prepared By : Shenzhen HUAKE Testing Technology Co., Ltd.

1-2/F., Building B2, Junfeng Zhongcheng Zhizao Innovation Park, Heping, Fuhai Street, Bao'an District, Shenzhen, Guangdong, China

Date of Test: Aug. 05, 2022 ~ Aug. 12, 2022

Date of Report: Aug. 12, 2022

Report Number: HK2208043401-2E

**TEST RESULT CERTIFICATION****Applicant's name**: V-Mark Enterprises Ltd.

Address: 400-601 West Broadway, Vancouver, British Columbia, Canada

Manufacture's Name: Jingrui Inspire Co., Ltd.Address: RM1306, Block 3 (C-1), Runhui Science Park, 18 Shenzhou Rd., Huangpu
Dist., Guangzhou, Guangdong Prov., 510663 P.R. China**Product description**

Trade Mark: N/A

Product name: Temp tag

Model and/or type reference: VRKRTS04WREG01, VRKRTS04WREG02

Standards: **47 CFR FCC Part 15 Subpart C 15.247**

This publication may be reproduced in whole or in part for non-commercial purposes as long as the Shenzhen HUAKE Testing Technology Co., Ltd. is acknowledged as copyright owner and source of the material. Shenzhen HUAKE Testing Technology Co., Ltd. takes no responsibility for and will not assume liability for damages resulting from the reader's interpretation of the reproduced material due to its placement and context.

Date of Test:Date (s) of performance of tests: **Aug. 05, 2022 ~ Aug. 12, 2022**Date of Issue: **Aug. 12, 2022**Test Result: **Pass**

Prepared by:

Project Engineer

Reviewed by:

Project Supervisor

Approved by:

Technical Director

**Contents****Page**

1	TEST SUMMARY	6
1.1	TEST DESCRIPTION	6
1.2	MEASUREMENT UNCERTAINTY	7
1.3	INFORMATION OF THE TEST LABORATORY	7
2	GENERAL INFORMATION	8
2.1	GENERAL DESCRIPTION OF EUT	8
2.2	DESCRIPTION OF TEST CONDITIONS	9
2.3	DESCRIPTION OF TEST SETUP	10
3	EQUIPMENTS LIST FOR ALL TEST ITEMS	11
4	TEST RESULT	13
4.1	ANTENNA REQUIREMENT	13
4.1.1	Standard requirement	13
4.1.2	EUT Antenna	13
4.2	CONDUCTION EMISSIONS MEASUREMENT	14
4.2.1	Applied procedures / Limit	14
4.2.2	Test procedure	14
4.2.3	Test setup	15
4.2.4	Test results	16
4.3	RADIATED EMISSIONS MEASUREMENT	17
4.3.1	Applied procedures / Limit	17
4.3.2	Test setup	17
4.3.3	Test Result	19
4.4	MAXIMUM OUTPUT POWER MEASUREMENT	26
4.4.1	Limit	26
4.4.2	Test procedure	26
4.4.3	Deviation from standard	26
4.4.4	Test setup	26
4.4.5	Test results	26
4.5	POWER SPECTRAL DENSITY	27
4.5.1	Limit	27
4.5.2	Test procedure	27
4.5.3	Deviation from standard	27
4.5.4	Test setup	27
4.5.5	Test results	28
4.6	6DB BANDWIDTH	29
4.6.1	Limit	29
4.6.2	Test procedure	29
4.6.3	Deviation from standard	29
4.6.4	Test setup	29
4.6.5	Test result	29

The results shown in this test report refer only to the sample(s) tested unless otherwise stated and the sample(s) are retained for 30 days only. The document is issued by HUAKE, this document cannot be reproduced except in full with our prior written permission. The more details and the authenticity of the report will be confirmed at <http://www.cer-mark.com>.

TEL : +86-755 2302 9901 FAX : +86-755 2302 9901 E-mail : service@cer-mark.com

Add: 1-2F., Building B2, Junfeng Zhongcheng Zhizao Innovation Park, Heping Community, Fuhai Street, Bao'an District, Shenzhen, Guangdong, China



4.7	OCCUPIED BANDWIDTH.....	30
4.7.1	Test procedure.....	30
4.7.2	Deviation from standard.....	30
4.7.3	Test setup	30
4.7.4	Test result	30
4.8	BAND EDGE.....	31
4.8.1	Limit	31
4.8.2	Test procedure.....	31
4.8.3	Deviation from standard.....	31
4.8.4	Test setup	31
4.8.5	Test results	31
4.9	CONDUCTED SPURIOUS EMISSIONS.....	32
4.9.1	Applied procedures / Limit	32
4.9.2	Test procedure.....	32
4.9.3	Deviation from standard.....	32
4.9.4	Test setup	32
4.9.5	Test results	33
5	TEST SETUP PHOTO	34
6	PHOTOS OF THE EUT	35



**** Modified History ****

Revision	Description	Issued Data	Remark
Revision 1.0	Initial Test Report Release	Aug. 12, 2022	Jason Zhou



1 TEST SUMMARY

1.1 TEST DESCRIPTION

Test Item	Test Requirement	Result
Antenna Requirement	§15.203/§15.247(b)(4)	PASS
Conducted Emission	FCC Part 15.207	N/A
Radiated Emissions	FCC Part 15.205/15.209	PASS
Maximum Peak Output Power	FCC Part 15.247(b)	compliance *
Power Spectral Density	FCC Part 15.247(e)	compliance *
6dB Bandwidth & 99% Bandwidth	FCC Part 15.247(a)(2)	compliance *
Spurious RF Conducted Emission	FCC Part 15.247(d)	compliance *
Band Edge	FCC Part 15.247(d)	compliance *
NOTE 1: For the verdict, the "N/A" denotes "not applicable", the "N/T" denotes "not tested", the "compliance *" Test data refers to FCC ID: X8WBT840F, and report number is: ISL-19LR205FC.		



1.2 MEASUREMENT UNCERTAINTY

All measurements involve certain levels of uncertainties. The data and results referenced in this document are true and accurate. The reader is cautioned that there may be errors within the calibration limits of the equipment and facilities. The measurement uncertainty was calculated for all measurements listed in this test report acc. To CISPR 16 – 4 “Specification for radio disturbance and immunity measuring apparatus and methods – Part 4: Uncertainty in EMC Measurements” and is documented in the LCS quality system acc. To DIN EN ISO/IEC 17025. Furthermore, component and process variability of devices similar to that tested may result in additional deviation. The manufacturer has the sole responsibility of continued compliance of the device. The maximum value of the uncertainty as below:

No.	Item	Uncertainty
1	Conducted Emission Test	$\pm 2.71\text{dB}$
2	All emissions, radiated(<1G)	$\pm 3.90\text{dB}$
3	All emissions, radiated(>1G)	$\pm 4.28\text{dB}$

1.3 INFORMATION OF THE TEST LABORATORY

Shenzhen HUAKE Testing Technology Co., Ltd.

Add.: 1-2/F., Building B2, Junfeng Zhongcheng Zhizao Innovation Park, Heping, Fuhai Street, Bao'an District, Shenzhen, Guangdong, China

Testing Laboratory Authorization:

A2LA Accreditation Code is 4781.01.

FCC Designation Number is CN1229.

Canada IC CAB identifier is CN0045.

CNAS Registration Number is L9589.



2 GENERAL INFORMATION

2.1 GENERAL DESCRIPTION OF EUT

EUT Name:	Temp tag
Model No:	VRKRTS04WREG01
Series Model:	VRKRTS04WREG02
Model Difference:	All model's the function, software and electric circuit are the same, only with a product color and model named different. Test sample model: VRKRTS04WREG01
Brand Name:	N/A
Operation Frequency:	2405MHz to 2480 MHz
Channel Separation:	5MHz
Number of Channel:	16
Modulation Technology:	GFSK
Antenna Type:	PCB Antenna
Antenna Gain:	0.34dBi
Power Supply:	DC 3.6V from battery
Note:	1.For a more detailed features description, please refer to the manufacturer's specifications or the User's Manual.



Description of Channel:					
Channel	Frequency (MHz)	Channel	Frequency (MHz)	Channel	Frequency (MHz)
1	2405	7	2435	13	2465
2	2410	8	2440	14	2470
3	2415	9	2445	15	2475
4	2420	10	2450	16	2480
5	2425	11	2455		
6	2430	12	2460		

2.2 DESCRIPTION OF TEST CONDITIONS

(1) E.U.T. test conditions:

For intentional radiators, measurements of the variation of the input power or the radiated signal level of the fundamental frequency component of the emission, as appropriate, shall be performed with the supply voltage varied between 85% and 115% of the nominal rated supply voltage. For battery operated equipment, the equipment tests shall be performed using a new battery.

(2) Frequency range of radiated measurements:

The test range will be up to the tenth harmonic of the highest fundamental frequency.

(3) Pre-test the EUT in all transmitting mode at the lowest (2405MHz), middle (2445 MHz) and highest (2480 MHz) channel with different data packet and conducted to determine the worst-case mode, only the worst-case results are recorded in this report.

(4) The EUT was programmed to be in continuously transmitting mode and the transmit duty cycle is not less than 98%.



2.3 DESCRIPTION OF TEST SETUP

Operation of EUT during testing:

EUT

The sample was placed (0.8m below 1GHz, 1.5m above 1GHz) above the ground plane of 3m chamber. Measurements in both horizontal and vertical polarities were performed. During the test, each emission was maximized by: having the EUT continuously working, investigated all operating modes, rotated about all 3 axis (X, Y & Z) and considered typical configuration to obtain worst position, manipulating interconnecting cables, rotating the turntable, varying antenna height from 1m to 4m in both horizontal and vertical polarizations. The emissions worst-case are shown in Test Results of the following pages. The worst case is X position.



3 EQUIPMENTS LIST FOR ALL TEST ITEMS

Item	Equipment	Manufacturer	Model No.	Serial No.	Last Cal.	Cal. Interval
1.	L.I.S.N. Artificial Mains Network	R&S	ENV216	HKE-002	Feb. 18, 2022	1 Year
2.	L.I.S.N.	R&S	ENV216	HKE-059	Feb. 18, 2022	1 Year
3.	Receiver	R&S	ESCI 7	HKE-010	Feb. 18, 2022	1 Year
4.	RF automatic control unit	Tonscend	JS0806-2	HKE-060	Feb. 18, 2022	1 Year
5.	Spectrum analyzer	R&S	FSP40	HKE-025	Feb. 18, 2022	1 Year
6.	Spectrum analyzer	Agilent	N9020A	HKE-048	Feb. 18, 2022	1 Year
7.	High gain antenna	Schwarzbeck	LB-180400KF	HKE-054	Feb. 18, 2022	1 Year
8.	Preamplifier	Schwarzbeck	BBV 9743	HKE-006	Feb. 18, 2022	1 Year
9.	Bilog Broadband Antenna	Schwarzbeck	VULB9163	HKE-012	Feb. 18, 2022	1 Year
10.	Loop Antenna	Schwarzbeck	FMZB 1519 B	HKE-014	Feb. 18, 2022	1 Year
11.	Horn Antenna	Schwarzbeck	9120D	HKE-013	Feb. 18, 2022	1 Year
12.	Pre-amplifier	EMCI	EMC051845SE	HKE-015	Feb. 18, 2022	1 Year
13.	Pre-amplifier	Agilent	83051A	HKE-016	Feb. 18, 2022	1 Year
14.	High pass filter unit	Tonscend	JS0806-F	HKE-055	Feb. 18, 2022	1 Year
15.	Conducted test software	Tonscend	TS+ Rev 2.5.0.0	HKE-081	N/A	N/A
16.	Radiated test software	Tonscend	TS+ Rev 2.5.0.0	HKE-082	N/A	N/A
17.	RF test software	Tonscend	JS1120-B Version 2.6	HKE-083	N/A	N/A
18.	RF automatic control unit	Tonscend	JS0806-2	HKE-060	Feb. 18, 2022	3 Year
19.	RF test software	Tonscend	JS1120-4	HKE-113	N/A	N/A
20.	RF test software	Tonscend	JS1120-3	HKE-114	N/A	N/A
21.	RF test software	Tonscend	JS1120-1	HKE-115	N/A	N/A
22.	Spectrum analyzer	Agilent	N9020A	HKE-048	Feb. 18, 2022	1 Year
23.	Signal generator	Agilent	N5182A	HKE-029	Feb. 18, 2022	1 Year
24.	Signal Generator	Agilent	83630A	HKE-028	Feb. 18, 2022	1 Year
25.	Power meter	Agilent	E4419B	HKE-085	Feb. 18, 2022	1 Year

The results shown in this test report refer only to the sample(s) tested unless otherwise stated and the sample(s) are retained for 30 days only. The document is issued by HUAKE, this document cannot be reproduced except in full with our prior written permission. The more details and the authenticity of the report will be confirmed at <http://www.cer-mark.com>.

TEL : +86-755 2302 9901 FAX : +86-755 2302 9901 E-mail : service@cer-mark.com

Add: 1-2F., Building B2, Junfeng Zhongcheng Zhizao Innovation Park, Heping Community, Fuhai Street, Bao'an District, Shenzhen, Guangdong, China



26.	Power Sensor	Agilent	E9300A	HKE-086	Feb. 18, 2022	1 Year
27.	RF Cable(below1GHz)	Times	9kHz-1GHz	HKE-117	Feb. 18, 2022	1 Year
28.	RF Cable(above 1GHz)	Times	1-40G	HKE-034	Feb. 18, 2022	1 Year
29.	RF Cable (9KHz-40GHz)	Tonscend	170660	N/A	Feb. 18, 2022	1 Year
30.	Shielded room	Shiel Hong	4*3*3	HKE-039	Feb. 18, 2022	1 Year



4 TEST RESULT

4.1 ANTENNA REQUIREMENT

4.1.1 Standard requirement

Standard Applicable

For intentional device, according to FCC 47 CFR Section 15.203, an intentional radiator shall be designed to ensure that no antenna other than that furnished by the responsible party shall be used with the device. And according to FCC 47 CFR Section 15.247, if transmitting antennas of directional gain greater than 6dBi are used, the power shall be reduced by the amount in dB that the directional gain of the antenna exceeds 6dBi.

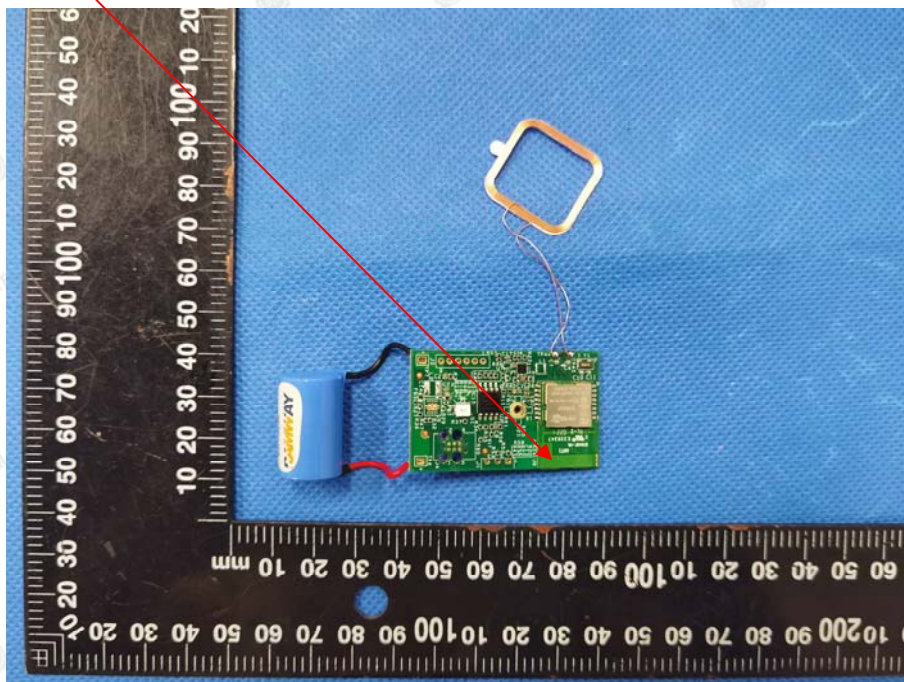
Refer to statement below for compliance.

The manufacturer may design the unit so that the user can replace a broken antenna, but the use of a standard antenna jack or electrical connector is prohibited. Further, this requirement does not apply to intentional radiators that must be professionally installed.

Antenna Connected Construction

The antenna used in this product is a PCB Antenna, which permanently attached. It conforms to the standard requirements. The directional gains of antenna used for transmitting is 0.34dBi.

4.1.2 EUT Antenna





4.2 CONDUCTION EMISSIONS MEASUREMENT

4.2.1 Applied procedures / Limit

According to FCC CFR Title 47 Part 15 Subpart C Section 15.207, AC Power Line Conducted Emissions Limits for Licence-Exempt Radio Apparatus as below:

Frequency range (MHz)	Limit (dBuV)	
	Quasi-peak	Average
0.15-0.5	66 to 56*	56 to 46*
0.5-5	56	46
5-30	60	50

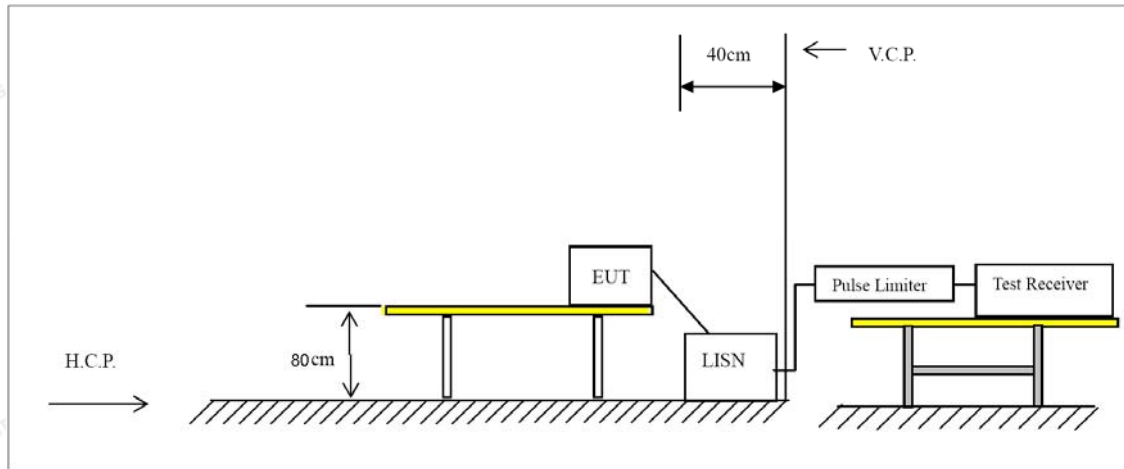
* Decreases with the logarithm of the frequency.

4.2.2 Test procedure

1. The equipment was set up as per the test configuration to simulate typical actual usage per the user's manual. The EUT is a tabletop system; a wooden table with a height of 0.8 meters is used and is placed on the ground plane as per ANSI C63.10:2013.
2. Support equipment, if needed, was placed as per ANSI C63.10:2013.
3. All I/O cables were positioned to simulate typical actual usage as per ANSI C63.10:2013.
4. The adapter received AC120V/60Hz power through a Line Impedance Stabilization Network (LISN) which supplied power source and was grounded to the ground plane.
5. All support equipments received AC power from a second LISN, if any.
6. The EUT test program was started. Emissions were measured on each current carrying line of the EUT using a spectrum Analyzer / Receiver connected to the LISN powering the EUT. The LISN has two monitoring points: Line 1 (Hot Side) and Line 2 (Neutral Side). Two scans were taken: one with Line 1 connected to Analyzer / Receiver and Line 2 connected to a 50 ohm load; the second scan had Line 1 connected to a 50 ohm load and Line 2 connected to the Analyzer / Receiver.
7. Analyzer / Receiver scanned from 150 KHz to 30MHz for emissions in each of the test modes.
8. During the above scans, the emissions were maximized by cable manipulation.



4.2.3 Test setup





4.2.4 Test results

Not applicable.

Note: EUT power supply by DC Power, so this test item not applicable



4.3 RADIATED EMISSIONS MEASUREMENT

4.3.1 Applied procedures / Limit

For intentional device, according to § 15.209(a), the general requirement of field strength of radiated emission out of authorized band shall not exceed the following table at a 3 meters measurement distance.

In addition, radiated emissions which fall in the restricted bands, as defined in §15.205(a), must also comply with the radiated emission limits specified in §15.209(a).

Except when the requirements applicable to a given device state otherwise, emissions from license-exempt transmitters shall comply with the field strength limits shown in table below. Additionally, the level of any transmitter emission shall not exceed the level of the transmitter's fundamental emission.

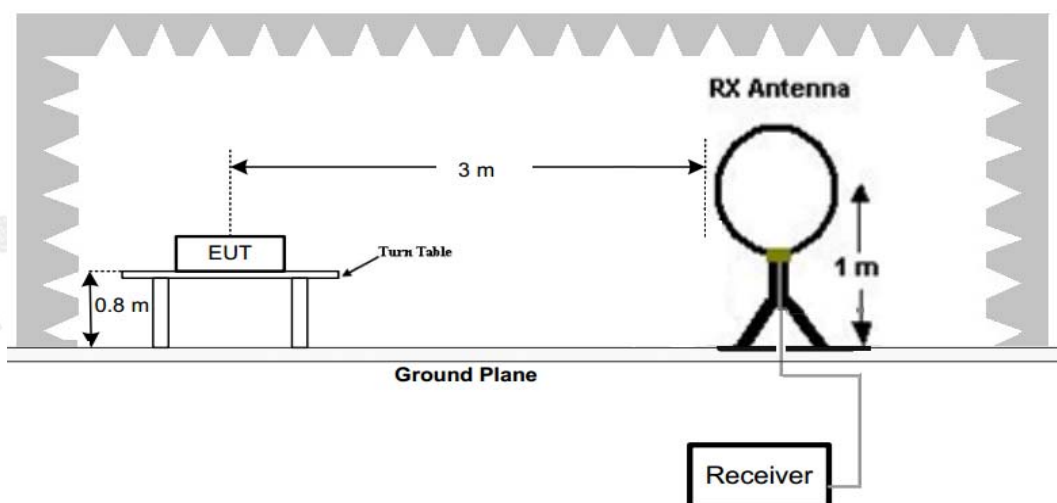
Radiated emission limits

Frequency (MHz)	Distance (Meters)	Radiated (dBμV/m)	Radiated (μV/m)
0.009-0.49	3	$20\log(2400/F(\text{KHz}))+40\log(300/3)$	$2400/F(\text{KHz})$
0.49-1.705	3	$20\log(24000/F(\text{KHz}))+40\log(30/3)$	$24000/F(\text{KHz})$
1.705-30	3	$20\log(30)+40\log(30/3)$	30
30-88	3	40.0	100
88-216	3	43.5	150
216-960	3	46.0	200
Above 960	3	54.0	500

4.3.2 Test setup

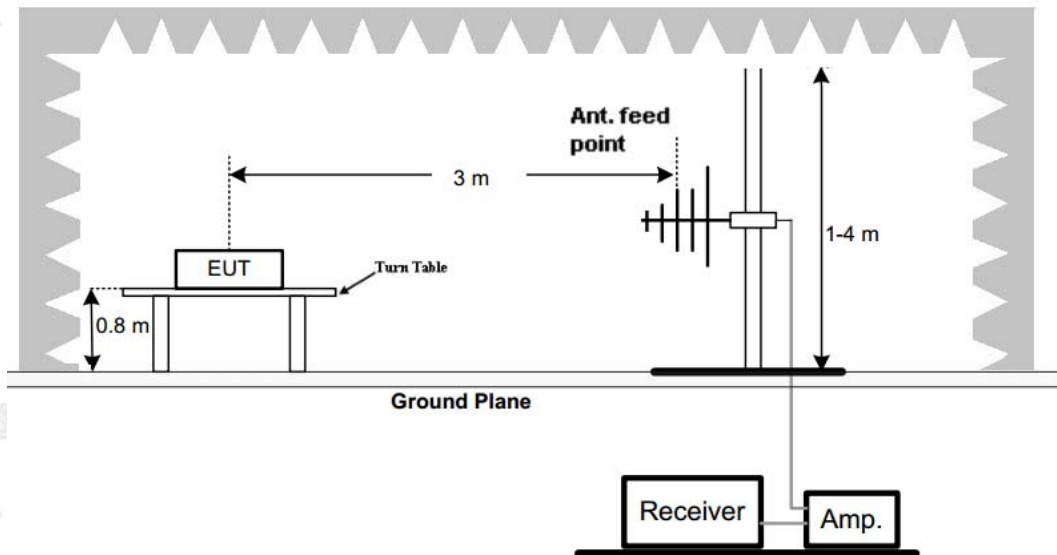
Test Configuration:

- 1) 9 kHz to 30 MHz emissions:

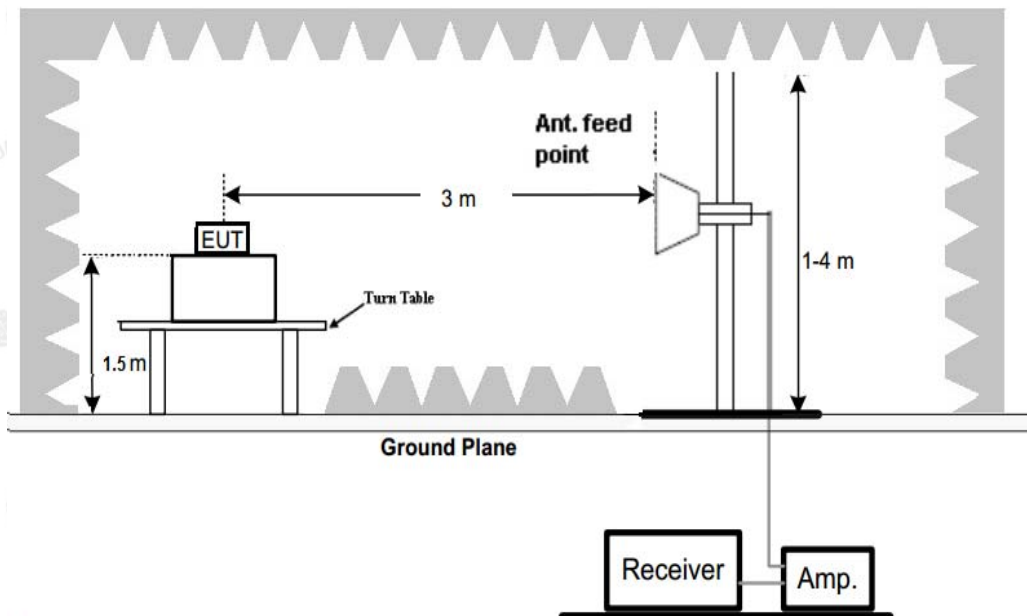




2) 30 MHz to 1 GHz emissions:



3) 1 GHz to 25 GHz emissions:

**Test Procedure**

1. The EUT was placed on turn table which is 0.8m above ground plane for below 1GHz test, and on a low permittivity and low loss tangent turn table which is 1.5m above ground plane for above 1GHz test.
2. Maximum procedure was performed by raising the receiving antenna from 1m to 4m and rotating the turn table from 0° to 360° to acquire the highest emissions from EUT.
3. And also, each emission was to be maximized by changing the polarization of receiving antenna both horizontal and vertical.
4. Repeat above procedures until all frequency measurements have been completed.

The results shown in this test report refer only to the sample(s) tested unless otherwise stated and the sample(s) are retained for 30 days only. The document is issued by HUAKE, this document cannot be reproduced except in full with our prior written permission. The more details and the authenticity of the report will be confirmed at <http://www.cer-mark.com>.

TEL : +86-755 2302 9901 FAX : +86-755 2302 9901 E-mail : service@cer-mark.com

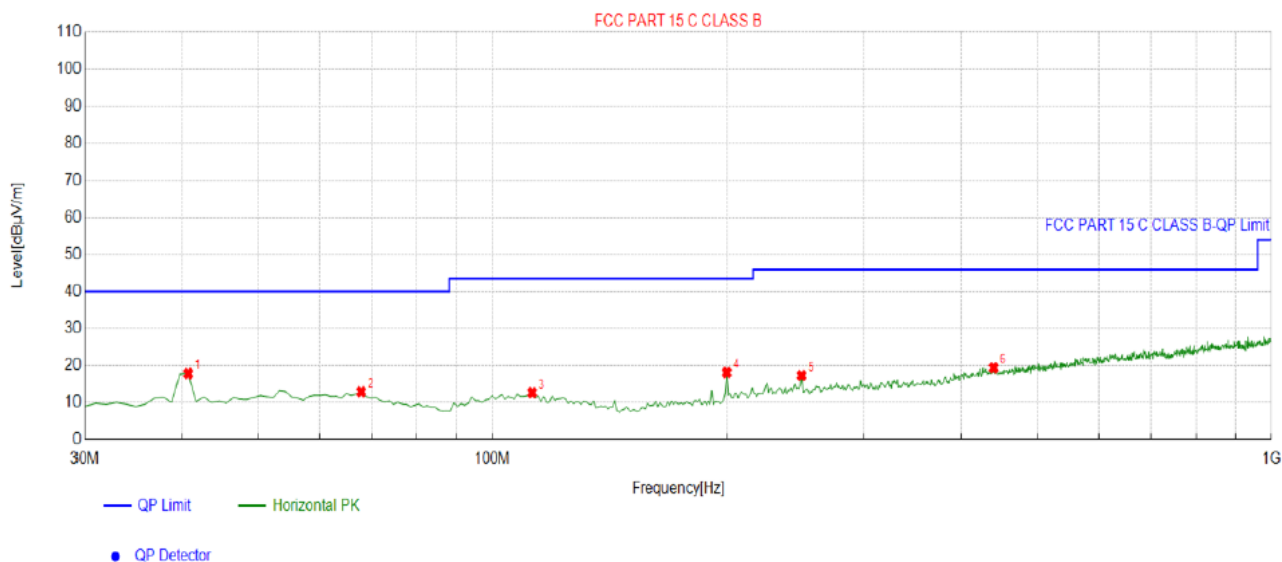
Add: 1-2F., Building B2, Junfeng Zhongcheng Zhizao Innovation Park, Heping Community, Fuhai Street, Bao'an District, Shenzhen, Guangdong, China



4.3.3 Test Result

Below 1GHz Test Results:

Antenna polarity: H

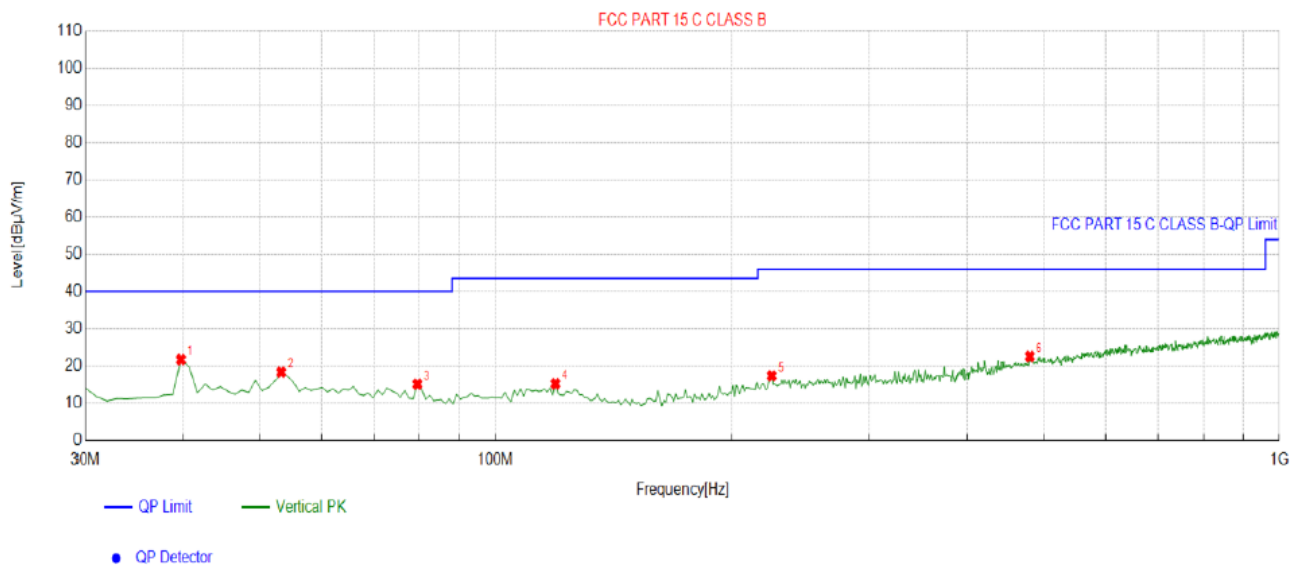


Suspected List									
NO.	Freq. [MHz]	Factor [dB]	Reading [dBμV/m]	Level [dBμV/m]	Limit [dBμV/m]	Margin [dB]	Height [cm]	Angle [°]	Polarity
1	40.6807	-15.22	33.04	17.82	40.00	22.18	100	83	Horizontal
2	67.8679	-15.10	28.01	12.91	40.00	27.09	100	344	Horizontal
3	112.5325	-14.94	27.62	12.68	43.50	30.82	100	52	Horizontal
4	199.9199	-15.14	33.25	18.11	43.50	25.39	100	359	Horizontal
5	249.4394	-12.84	30.16	17.32	46.00	28.68	100	180	Horizontal
6	439.7498	-8.22	27.61	19.39	46.00	26.61	100	177	Horizontal

Remark: Factor = Cable loss + Antenna factor – Preamplifier; Level = Reading + Factor; Margin = Limit – Level



Antenna polarity: V



Suspected List

NO.	Freq. [MHz]	Factor [dB]	Reading [dBμV/m]	Level [dBμV/m]	Limit [dBμV/m]	Margin [dB]	Height [cm]	Angle [°]	Polarity
1	39.7097	-15.24	36.96	21.72	40.00	18.28	100	50	Vertical
2	53.3033	-14.28	32.63	18.35	40.00	21.65	100	74	Vertical
3	79.5195	-17.32	32.46	15.14	40.00	24.86	100	206	Vertical
4	119.3293	-15.48	30.72	15.24	43.50	28.26	100	1	Vertical
5	225.1652	-13.79	31.18	17.39	46.00	28.61	100	360	Vertical
6	480.5305	-7.41	29.99	22.58	46.00	23.42	100	297	Vertical

Remark: Factor = Cable loss + Antenna factor – Preamplifier; Level = Reading + Factor; Margin = Limit – Level

Harmonics and Spurious Emissions

Frequency Range (9 kHz-30MHz)

Frequency (MHz)	Level@3m (dBμV/m)	Limit@3m (dBμV/m)
--	--	--
--	--	--
--	--	--
--	--	--

Note: 1. Emission Level=Reading+ Cable loss+ Antenna factor-Amp factor.

2. The emission levels are 20 dB below the limit value, which are not reported. It is deemed to comply with the requirement.

**For 1GHz to 25GHz**

CH Low (2405MHz)

Horizontal:

Frequency	Meter Reading	Factor	Emission Level	Limits	Margin	Detector Type
(MHz)	(dBμV)	(dB)	(dBμV/m)	(dBμV/m)	(dB)	
4810	53.16	-3.65	49.51	74.00	-24.49	peak
4810	46.12	-3.65	42.47	54.00	-11.53	AVG
7215	51.22	-0.95	50.27	74.00	-23.73	peak
7215	43.69	-0.95	42.74	54.00	-11.26	AVG
Remark: Factor = Antenna Factor + Cable Loss – Pre-amplifier.						

Vertical:

Frequency	Meter Reading	Factor	Emission Level	Limits	Margin	Detector Type
(MHz)	(dBμV)	(dB)	(dBμV/m)	(dBμV/m)	(dB)	
4810	56.92	-3.65	53.27	74.00	-20.73	peak
4810	41.66	-3.65	38.01	54.00	-15.99	AVG
7215	54.19	-0.95	53.24	74.00	-20.76	peak
7215	41.97	-0.95	41.02	54.00	-12.98	AVG
Remark: Factor = Antenna Factor + Cable Loss – Pre-amplifier.						



CH Middle (2445MHz)

Horizontal:

Frequency	Meter Reading	Factor	Emission Level	Limits	Margin	Detector Type
(MHz)	(dBμV)	(dB)	(dBμV/m)	(dBμV/m)	(dB)	
4880	56.12	-3.54	52.58	74.00	-21.42	peak
4880	45.62	-3.54	42.08	54.00	-11.92	AVG
7320	53.76	-0.81	52.95	74.00	-21.05	peak
7320	43.33	-0.81	42.52	54.00	-11.48	AVG
Remark: Factor = Antenna Factor + Cable Loss – Pre-amplifier.						

Vertical:

Frequency	Meter Reading	Factor	Emission Level	Limits	Margin	Detector Type
(MHz)	(dBμV)	(dB)	(dBμV/m)	(dBμV/m)	(dB)	
4880	55.28	-3.54	51.74	74.00	-22.26	peak
4880	44.62	-3.54	41.08	54.00	-12.92	AVG
7320	52.19	-0.81	51.38	74.00	-22.62	peak
7320	42.06	-0.81	41.25	54.00	-12.75	AVG
Remark: Factor = Antenna Factor + Cable Loss – Pre-amplifier.						



CH High (2480MHz)

Horizontal:

Frequency	Meter Reading	Factor	Emission Level	Limits	Margin	Detector Type
(MHz)	(dBμV)	(dB)	(dBμV/m)	(dBμV/m)	(dB)	
4960	55.21	-3.43	51.78	74.00	-22.22	peak
4960	43.97	-3.44	40.53	54.00	-13.47	AVG
7440	52.46	-0.77	51.69	74.00	-22.31	peak
7440	41.34	-0.77	40.57	54.00	-13.43	AVG
Remark: Factor = Antenna Factor + Cable Loss – Pre-amplifier.						

Vertical:

Frequency	Meter Reading	Factor	Emission Level	Limits	Margin	Detector Type
(MHz)	(dBμV)	(dB)	(dBμV/m)	(dBμV/m)	(dB)	
4960	52.36	-3.43	48.93	74.00	-25.07	peak
4960	43.16	-3.44	39.72	54.00	-14.28	AVG
7440	48.88	-0.77	48.11	74.00	-25.89	peak
7440	42.35	-0.77	41.58	54.00	-12.42	AVG
Remark: Factor = Antenna Factor + Cable Loss – Pre-amplifier.						

Remark:

(1) Measuring frequencies from 1 GHz to the 25 GHz.

(2) "F" denotes fundamental frequency; "H" denotes spurious frequency; "E" denotes band edge frequency.

(3) * denotes emission frequency which appearing within the Restricted Bands specified in provision of 15.205, then the general radiated emission limits in 15.209 apply.

(4) The emissions are attenuated more than 20dB below the permissible limits are not recorded in the report.

(5) The IF bandwidth of EMI Test Receiver between 30MHz to 1GHz was 120KHz, 1 MHz for measuring above 1 GHz, below 30MHz was 10KHz. The resolution bandwidth of test receiver/spectrum analyzer is 1MHz and video bandwidth is 3MHz for peak measurement with peak detector at frequency above 1GHz. The resolution bandwidth of test receiver/spectrum analyzer is 1MHz and video bandwidth is 10Hz for Average measurement with peak detection at frequency above 1GHz.

(6) When the test results of Peak Detected below the limits of Average Detected, the Average Detected is not need completed. For example: Top Channel at Fundamental 73.16dBuV/m(PK Value) <93.98(AV Limit), at harmonic 53.20 dBuV/m(PK Value) <54 dBuV/m(AV Limit), the Average Detected not need to completed.

(7) All modes of operation were investigated and the worst-case emissions are reported.



Radiated Band Edge Test:

Operation Mode: TX CH Low (2405MHz)

Horizontal (Worst case):

Frequency	Reading Result	Factor	Emission Level	Limits	Margin	Detector Type
(MHz)	(dBμV)	(dB)	(dBμV/m)	(dBμV/m)	(dB)	
2310.00	56.12	-5.81	50.31	74	-23.69	peak
2310.00	/	-5.81	/	54	/	AVG
2390.00	55.24	-5.84	49.4	74	-24.6	peak
2390.00	/	-5.84	/	54	/	AVG
2400.00	55.96	-5.84	50.12	74	-23.88	peak
2400.00	/	-5.84	/	54	/	AVG
Remark: Factor = Antenna Factor + Cable Loss – Pre-amplifier.						

Vertical:

Frequency	Reading Result	Factor	Emission Level	Limits	Margin	Detector Type
(MHz)	(dBμV)	(dB)	(dBμV/m)	(dBμV/m)	(dB)	
2310.00	55.46	-5.81	49.65	74	-24.35	peak
2310.00	/	-5.81	/	54	/	AVG
2390.00	54.21	-5.84	48.37	74	-25.63	peak
2390.00	/	-5.84	/	54	/	AVG
2400.00	53.67	-5.84	47.83	74	-26.17	peak
2400.00	/	-5.84	/	54	/	AVG
Remark: Factor = Antenna Factor + Cable Loss – Pre-amplifier.						



Operation Mode: TX CH High (2480MHz)

Horizontal (Worst case)

Frequency (MHz)	Meter Reading (dBμV)	Factor (dB)	Emission Level (dBμV/m)	Limits (dBμV/m)	Margin (dB)	Detector Type
2483.50	56.38	-5.81	50.57	74	-23.43	peak
2483.50	/	-5.81	/	54	/	AVG
2500.00	57.41	-6.06	51.35	74	-22.65	peak
2500.00	/	-6.06	/	54	/	AVG
Remark: Factor = Antenna Factor + Cable Loss – Pre-amplifier.						

Vertical:

Frequency (MHz)	Meter Reading (dBμV)	Factor (dB)	Emission Level (dBμV/m)	Limits (dBμV/m)	Margin (dB)	Detector Type
2483.50	56.29	-5.81	50.48	74	-23.52	peak
2483.50	/	-5.81	/	54	/	AVG
2500.00	57.42	-6.06	51.36	74	-22.64	peak
2500.00	/	-6.06	/	54	/	AVG
Remark: Factor = Antenna Factor + Cable Loss – Pre-amplifier.						
Remark: All the other emissions not reported were too low to read and deemed to comply with FCC limit.						



4.4 MAXIMUM OUTPUT POWER MEASUREMENT

4.4.1 Limit

The Maximum Peak Output Power Measurement is 30dBm.

4.4.2 Test procedure

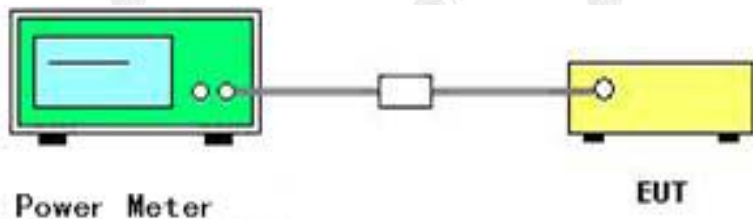
The maximum peak conducted output power may be measured using a broadband peak RF power meter. The power meter shall have a video bandwidth that is greater than or equal to the DTS bandwidth and shall utilize a fast-responding diode detector.

The maximum Average conducted output power may be measured using a wideband RF power meter with a thermocouple detector or equivalent. The power meter shall have a video bandwidth that is greater than or equal to the DTS bandwidth and shall utilize a fast-responding diode detector.

4.4.3 Deviation from standard

No deviation.

4.4.4 Test setup



4.4.5 Test results

Test data refers to FCC ID: X8WBT840F, and report number is: ISL-19LR205FC.



4.5 POWER SPECTRAL DENSITY

4.5.1 Limit

For digitally modulated systems, the power spectral density conducted from the intentional radiator to the antenna shall not be greater than 8 dBm in any 3 kHz band during any time interval of continuous transmission.

4.5.2 Test procedure

Use this procedure when the maximum peak conducted output power in the fundamental emission is used to demonstrate compliance.

Set the RBW =10 kHz.

Set the VBW =30 KHz.

Set the span to 1.5 times the DTS channel bandwidth.

Detector = peak.

Sweep time = auto couple.

Trace mode = max hold.

Allow trace to fully stabilize.

Use the peak marker function to determine the maximum power level.

If measured value exceeds limit, reduce RBW(no less than 3 kHz)and repeat.

The resulting peak PSD level must be 8 dBm.

4.5.3 Deviation from standard

No deviation.

4.5.4 Test setup





4.5.5 Test results

Test data refers to FCC ID: X8WBT840F, and report number is: ISL-19LR205FC.



4.6 6DB BANDWIDTH

4.6.1 Limit

For digital modulation systems, the minimum 6 dB bandwidth shall be at least 500 kHz.

4.6.2 Test procedure

The transmitter output was connected to the spectrum analyzer through an attenuator. The bandwidth of the fundamental frequency was measured by spectrum analyzer with RBW=100 KHz and VBW=300KHz. The 6dB bandwidth is defined as the total spectrum the power of which is higher than peak power minus 6dB.

1. Set RBW = 100 kHz.
2. Set the video bandwidth (VBW) ≥ 3 RBW.
3. Detector = Peak.
4. Trace mode = max hold.
5. Sweep = auto couple.
6. Allow the trace to stabilize.
7. Measure the maximum width of the emission that is constrained by the frequencies associated with the two outermost amplitude points (upper and lower frequencies) that are attenuated by 6 dB relative to the maximum level measured in the fundamental emission.

4.6.3 Deviation from standard

No deviation.

4.6.4 Test setup



4.6.5 Test result

Test data refers to FCC ID: X8WBT840F, and report number is: ISL-19LR205FC.



4.7 OCCUPIED BANDWIDTH

4.7.1 Test procedure

The occupied bandwidth is the frequency bandwidth such that, below its lower and above its upper frequency limits, the mean powers are each equal to 0.5% of the total mean power of the given emission. The following procedure shall be used for measuring 99% power bandwidth:

RBW=1% to 5% of the OBW

VBW=approximately 3 X RBW

Detector=Peak

Trace Mode: Max Hold

Use the 99% power bandwidth function of the instrument to measure the Occupied Bandwidth and recorded.

4.7.2 Deviation from standard

No deviation.

4.7.3 Test setup



4.7.4 Test result

N/A



4.8 BAND EDGE

4.8.1 Limit

In any 100 kHz bandwidth outside the frequency band in which the spread spectrum or digitally modulated device is operating, the RF power that is produced shall be at least 20 dB below that in the 100 kHz bandwidth within the band that contains the highest level of the desired power, based on either an RF conducted or a radiated measurement, provided that the transmitter demonstrates compliance with the peak conducted power limits. If the transmitter complies with the conducted power limits based on the use of root-mean-square averaging over a time interval, as permitted under FCC rules in section 5.8.1, the attenuation required shall be 30 dB instead of 20 dB.

4.8.2 Test procedure

- The EUT was directly connected to the spectrum analyzer and antenna output port as show in the block diagram below.
- Span = wide enough to capture the peak level of the emission operating on the channel closest to the band edge, as well as any modulation products which fall outside of the authorized band of operation, $RBW \geq 1\%$ of the span, $VBW \geq RBW$, Sweep = auto, Detector function = peak, Trace = max hold

4.8.3 Deviation from standard

No deviation.

4.8.4 Test setup



4.8.5 Test results

Test data refers to FCC ID: X8WBT840F, and report number is: ISL-19LR205FC.



4.9 CONDUCTED SPURIOUS EMISSIONS

4.9.1 Applied procedures / Limit

In any 100 kHz bandwidth outside the frequency band in which the spread spectrum or digitally modulated device is operating, the RF power that is produced shall be at least 20 dB below that in the 100 kHz bandwidth within the band that contains the highest level of the desired power, based on either an RF conducted or a radiated measurement, provided that the transmitter demonstrates compliance with the peak conducted power limits. If the transmitter complies with the conducted power limits based on the use of root-mean-square averaging over a time interval, as permitted under Section (b)(3) of RSS 5.4(4), the attenuation required shall be 30 dB instead of 20 dB. For below 30MHz, For 9KHz-150kHz, 150K-10MHz, We use the RBW 1KHz, 10KHz, So the limit need to calculated by " $10\lg(BW1/BW2)$ ". for example For 9KHz-150kHz, RBW 1KHz, The Limit= the highest emission level-20-10log(100/1)= the highest emission level-40.

4.9.2 Test procedure

- The EUT was directly connected to the spectrum analyzer and antenna output port as show in the block diagram below.
- Span = wide enough to capture the peak level of the emission operating on the channel closest to the band edge, as well as any modulation products which fall outside of the authorized band of operation, $RBW \geq 1\%$ of the span, $VBW \geq RBW$, Sweep = auto, Detector function = peak, Trace = max hold

4.9.3 Deviation from standard

No deviation.

4.9.4 Test setup





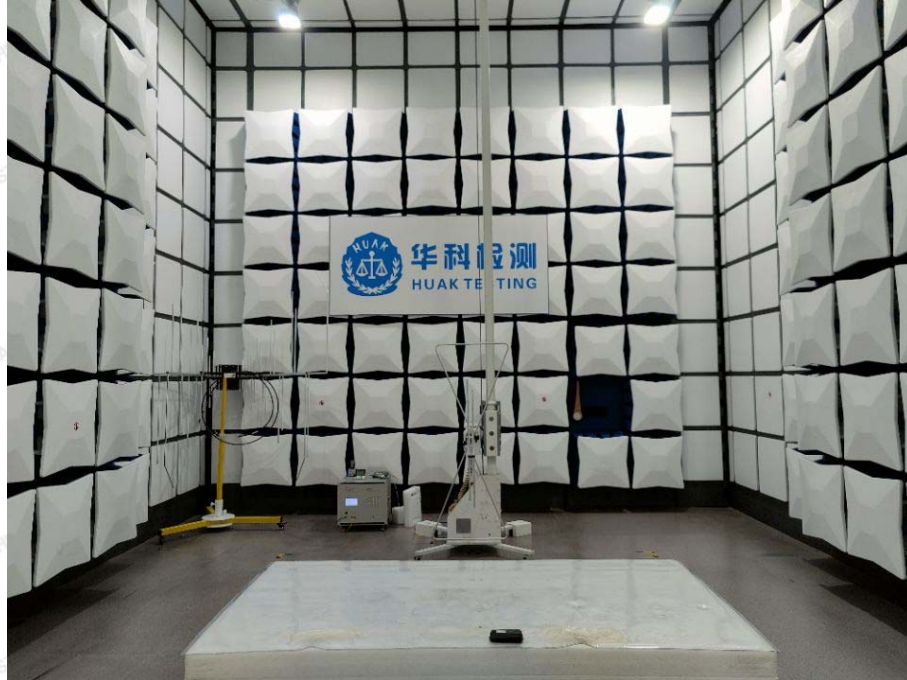
4.9.5 Test results

Test data refers to FCC ID: X8WBT840F, and report number is: ISL-19LR205FC.



5 TEST SETUP PHOTO

Radiated Emissions



The results shown in this test report refer only to the sample(s) tested unless otherwise stated and the sample(s) are retained for 30 days only. The document is issued by HUAKE, this document cannot be reproduced except in full with our prior written permission. The more details and the authenticity of the report will be confirmed at <http://www.cer-mark.com>.

TEL : +86-755 2302 9901 FAX : +86-755 2302 9901 E-mail : service@cer-mark.com

Add: 1-2F., Building B2, Junfeng Zhongcheng Zhizao Innovation Park, Heping Community, Fuhai Street, Bao'an District, Shenzhen, Guangdong, China



6 PHOTOS OF THE EUT

Reference to the report: ANNEX A of external photos and ANNEX B of internal photos.

-----End of test report-----

