

6.8cm

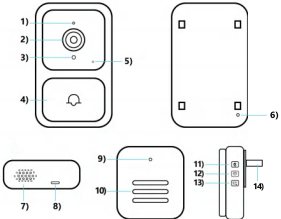


ULooka
Smart Visual Doorbell
Operating Instruction Manual V1.0
Smart Doorbell
Model: IPB203

DC 3.7V battery inside

Please read carefully before use and keep it properly for future reference

I. Appearance:



Doorbell:

- 1) Shipping mark 2) camera lens 3) photosensitive
4) Doorbell key 5)pilot lamp 6) Reset hole
7) Doorbell horn 8) Charging port
Dingdong:
9) pilot lamp 10) Dingdong horn 11) Pairing key
12) Volume level 13) Music switching 14) USB connector

II.Download method:

1.Android mobile phones can be downloaded in its own application market or by searching [ULooka] on App Store; IOS mobile phone searches [ULooka] in the APP Store to download.

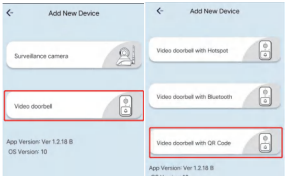


ULooka

III.Add equipment (QR code distribution network):

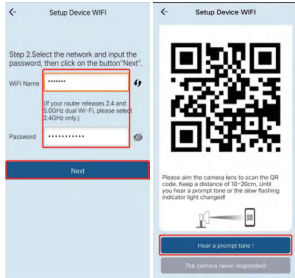
2.Open the APP, read the "Privacy Policy", and click "Agree".
APP pop-up prompt: message push notification permission, APP Bluetooth connection and location permission, and enabling mobile phone Bluetooth function. Please go to Settings and Confirm.

1. Press the doorbell key to start the machine, and press and hold RESET for about 3 seconds to hear "ding".
2. Open the APP, click "+" to add the device, and select "Video Doorbell with QR code".

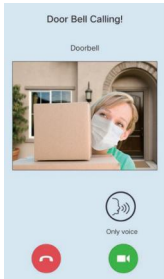


3.Click Next and enter the WIFI account and password.

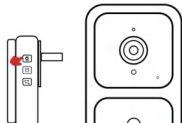
4.Please aim the doorbell lens at the mobile phone to scan the QR code(Please remove the lens protector when scanning the code), keep a distance of 10-15cm until you hear the prompt tone, and click "Hear the prompt tone"



5.The device has been added successfully. Click Video Answer to enter the real-time interface.
(Note: If the connection is not successful, please check whether the WIFI name and password are correct. Only 2.4G wireless network is supported;
Or reset the device and reconnect it according to the above steps)



IV. Door bell and ding Dong machine match:



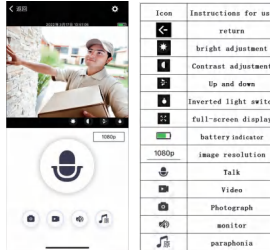
1. Ding Dong machine (picture left) to turn on the power supply.
2. Long press the ding Dong machine pairing button for 3 seconds (as shown in the picture), and the indicator light flashes;
3. Press the doorbell button (right), ding dong machine ring, that is, match.

V. Mobile phone information push

New users open the APP system will prompt [Application notifications disabled]. Please set the popup. Or go to the mobile phone Settings --> Apply permission management, find ULooka app to open the permission notification permission.For details, please refer to APP [About] - [APP push message guidelines]



VI. Interface Description:



VII. Function Introduction:

- 1.Information push: When someone presses the doorbell, the mobile phone will receive the APP push information, and click the push pop-up window to enter the video call.
2.Video call: Hold down the microphone key to speak, open the horn to listen.
3.Doorbell sharing: APP can share the doorbell with others, open APP-Settings-Share-QR Code, the person being shared needs to download the APP and scan the QR code, and enter the default password of the device "8888".
4.Low power reminder: When the battery power is relatively low, the APP will push a low power reminder, please charge in time.
5.Working light:
Blue light flashing: not equipped with the network
Blue light flash flash: in the distribution network
Blue light is often bright: already equipped with the network
Blue light out: equipment dormant
Red light is always on: in charging
Red light goes off: fully charged

VIII. Matters needing attention

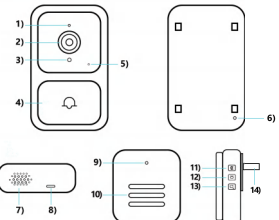
- The device is a low-power doorbell, and it is normal for the device to go to sleep and go offline when no one rings the doorbell.
- Please tear off the lens protection film when scanning the code and distributing the network.
- Due to different mobile phone models, push settings are different, please set according to your needs and models.
- Only support 2.4G WIFI, do not support 5G or WIFI with Chinese name and special symbol.
- Since metal is easy to interfere with WIFI signals, please try to avoid installing the device on metal walls.
- Pair the doorbell with the ding-dong before use and install it in the effective area.



ULooka 智能可视门铃
使用说明书 V1.0

使用前请仔细阅读，并妥善保管以备后续参考

一、外观介绍:



门铃:

- 1) 咪头 2) 镜头 3) 光敏 4) 门铃键
5)指示灯 6) 复位孔 7) 门铃喇叭 8) 充电口
叮咚:
9) 指示灯 10) 叮咚喇叭 11) 配对键 12) 音量大小
13) 音乐切换 14) USB 插电极

二、APP 下载方式:

1.Android 手机可在自带应用市场或应用宝搜索 [ULooka] 进行下载; IOS 手机在 APP Store 中搜索 [ULooka] 下载。



ULooka

2.打开 APP 阅读“隐私政策”，点击“同意”。
APP 弹窗提示：消息推送通知权限、APP 蓝牙连接和定位权限、开启手机蓝牙功能。请前往设置及确认。

三、添加设备（二维码配网）:

1. 按门铃键开机，长按 RESET 约 3 秒听到“滴”。
2. 打开 APP，点击“+”添加设备，选择“可视门铃：二维码配网”。

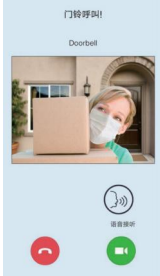


3. 点击下一步，输入 WIFI 账号与密码。

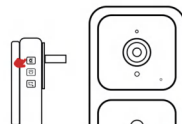
4. 请将门铃镜头对准手机扫描二维码(扫码时请取下镜头保护膜),保持 10-15cm 的距离,直到听到提示音。点击“听到提示音”



5. 设备添加成功，点击视频预览进入实时界面。
(备注：如未连接成功，请检查 WIFI 名称和密码是否正确,是否支持 2.4G 无线网络;或者复位设备按上述步骤重新连接)



四、门铃与叮咚机匹配:



1. 叮咚机（图左）接通电源；
2. 长按叮咚机配对键 3 秒（如图），指示灯闪烁；
3. 按一下门铃键（图右），叮咚机响铃，即匹配成功。

五、手机信息推送

新用户打开 APP 系统会提示“应用通知权限设置”，请根据弹窗设置。或者前往手机设置-->应用通知管理，找到 ULooka APP 打开允许通知权限。具体可参考 APP【关于】-[APP 消息推送设置指引]。



六、界面说明:



1. 叮咚机（图左）接通电源；
2. 长按叮咚机配对键 3 秒（如图），指示灯闪烁；
3. 按一下门铃键（图右），叮咚机响铃，即匹配成功。

七、功能介绍:

- 1.信息推送：当有人按门铃时，手机会收到 APP 推送信息，点击推送弹窗进入视频通话。
2.视频通话：按住麦克风键对讲，打开喇叭监听。
3.门铃分享：APP 可以将门铃分享给他人，打开 APP-设置-分享-二维码，被分享者需下载 APP 及扫描二维码，输入设备默认密码“8888”。
4.低电量提醒：当电池电量比较低时，APP 会推送低电量提醒，请及时充电。
5.工作指示灯：
蓝灯闪烁：未配网
蓝灯快闪：配网中
蓝灯常亮：已配网
蓝灯熄灭：设备休眠
红灯常亮：充电中
红灯熄灭：充满电

八、注意事项

- 设备为低功耗门铃，无人按门铃时，设备进入休眠模式，属正常现象。
- 扫码配网时请取下镜头保护膜。
- 因手机型号不同，推送设置不同，请根据需求及机型设置。
- 仅支持 2.4G WIFI，暂不支持 5G 或带有中文名字、特殊符号的 WIFI。
- 由于金属干扰 WIFI 信号，请尽量避免将设备安装在金属壁上。
- 使用前先将门铃与叮咚机配对，安装在有效区域。

FCC Warning

This device complies with part 15 of the FCC Rules. Operation is subject to the following two conditions:
(1) This device may not cause harmful interference, and (2) this device must accept any interference received, including interference that may cause undesired operation.

Any Changes or modifications not expressly approved by the party responsible for compliance could void the user's authority to operate the equipment.

Note: This equipment has been tested and found to comply with the limits for a Class B digital device, pursuant to part 15 of the FCC Rules. These limits are designed to provide reasonable protection against harmful interference in a residential installation. This equipment generates uses and can radiate radio frequency energy and, if not installed and used in accordance with the instructions, may cause harmful interference to radio communications. However, there is no guarantee that interference will not occur in a particular installation. If this equipment does cause harmful interference to radio or television reception, which can be determined by turning the equipment off and on, the user is encouraged to try to correct the interference by one or more of the following measures:

- Reorient or relocate the receiving antenna.
- Increase the separation between the equipment and receiver.
- Connect the equipment into an outlet on a circuit different from that to which the receiver is connected.
- Consult the dealer or an experienced radio/TV technician for help.

This equipment complies with FCC radiation exposure limits set forth for an uncontrolled environment. This equipment should be installed and operated with minimum distance 20cm between the radiator & your body.