



USER MANUAL

Device Description

- Built-in battery.
- Support DC 5V/2A power supply.
- The device has two working modes: AP hotspot mode and Wi-Fi remote mode.
- How to factory reset: When the camera is turned on, press and hold the reset button for about 5 seconds until the blue light and the green light flash alternately.

Indicator Status

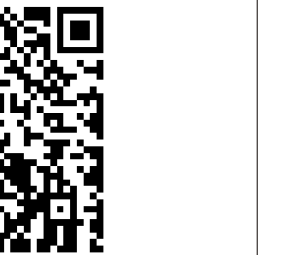
- Yellow light (Red light):** charging—always bright fully charged—off.
- Blue light:** waiting for Wi-Fi connection—flash slowly, during Wi-Fi connection—flash quickly, Wi-Fi connection successfully—always bright.
- Factory reset:** The blue light and the green light flash alternately.
- Low power alarm:** The blue light and the green light flash at the same time.

— 1 —

Step 1: Pre-Setup

- ✓ Turn on the camera.
- ✓ Restore the camera to the factory settings.
- ✓ Please place the camera within 2 meters range of the router when connecting to Wi-Fi.
- ✓ Connect your phone to Wi-Fi and clear the Wi-Fi password.

Step 2: APP Download and Registration



- 1 Search for "O-KAM Pro" in APP Store or Google Play, or scan the QR cord above to download the APP.

— 2 —

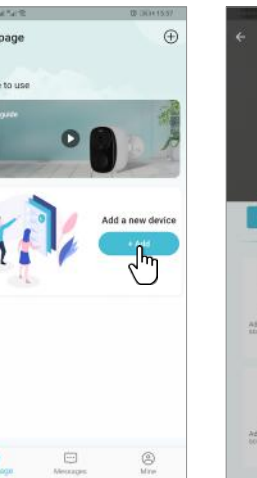


- 2 Click "Register now" and register your account according to the prompts.

Step 3: Add Devices to the APP

Method One: Scan QR code to add camera

— 3 —



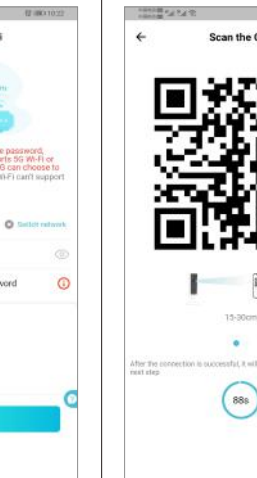
- 1 Click "Add", then scan the QR code on the camera, or directly select "Wireless Camera". Please select "I got it" when prompting Bluetooth permissions.

— 4 —



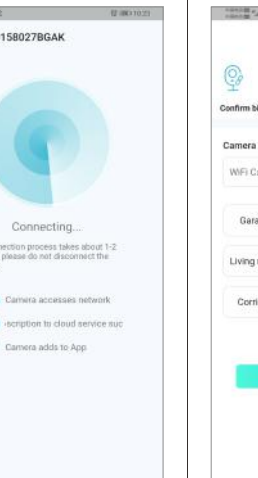
- 2 Turn on the camera and restore it to the factory settings.
- 3 Confirm the Wi-Fi you want to connect and enter the correct password.

— 5 —



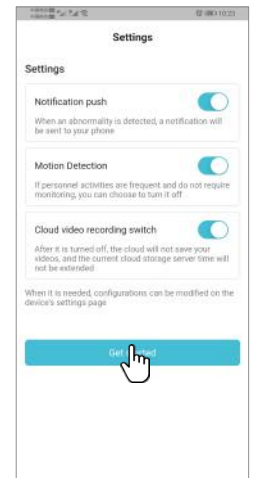
- 4 Scan the QR code generated by the APP with the camera lens until the camera emits a beep or the blue light flashes quickly.

— 6 —



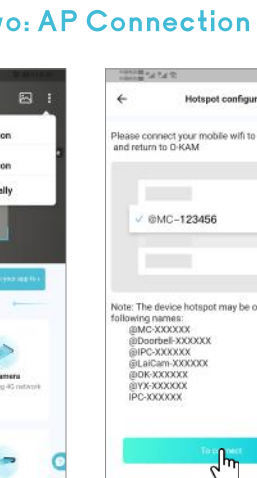
- 5 Wait for the camera to bind to the APP.

— 7 —



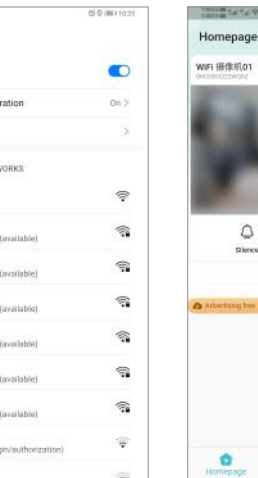
- 6 Click "Get started" in turn.

— 8 —



- 1 Click the icon in the upper right corner and select "Hotspot Configuration".

— 9 —



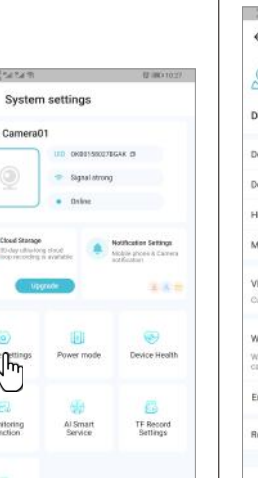
- 3 Enter the network settings of your phone, select the signal of "@ OK - ...", and connect.

— 10 —



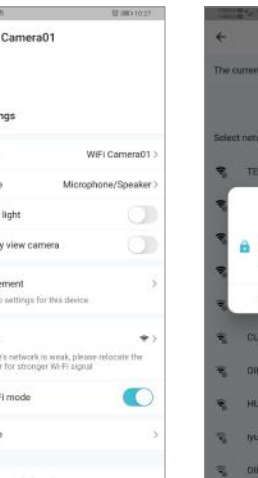
- 4 Back to the APP to automatically add the device, click the play button to watch.

— 11 —



- 1 Click "Settings".
- 2 Select "Device Settings".

— 12 —



- 3 Click "Wi-Fi network".
- 4 Select the Wi-Fi you want to connect and enter the correct password.

— 13 —

FCC Caution
This device complies with part 15 of the FCC Rules. Operation is subject to the following two conditions:
(1) This device may not cause harmful interference, and (2) this device must accept any interference received, including interference that may cause undesired operation.

Any Changes or modifications not expressly approved by the party responsible for compliance could void the user's authority to operate the equipment.

Note: This equipment has been tested and found to comply with the limits for a Class B digital device, pursuant to part 15 of the FCC Rules. These limits are designed to provide reasonable protection against harmful interference in a residential installation. This equipment generates uses and can radiate radio frequency energy and, if not installed and used in accordance with the instructions, may cause harmful interference to radio communications. However, there is no guarantee that interference will not occur in a particular installation. If this equipment does cause harmful interference to radio or television

reception, which can be determined by turning the equipment off and on, the user is encouraged to try to correct the interference by one or more of the following measures:

- Reorient or relocate the receiving antenna.
- Increase the separation between the equipment and receiver.
- Connect the equipment into an outlet on a circuit different from that to which the receiver is connected.
- Consult the dealer or an experienced radio/TV technician for help.

The device has been evaluated to meet general RF exposure requirement. The device can be used in portable exposure condition without restriction.

— 14 —