



USER MANUAL

Device Description

- Built-in battery.
- Support DC 5V/2A power supply.
- The device has two working modes: AP hotspot mode and Wi-Fi remote mode.
- How to factory reset: When the camera is turned on, press and hold the reset button for about 5 seconds until the blue light and the green light flash alternately.

Indicator Status

- Yellow light (Red light):** charging—always bright fully charged—off.
- Blue light:** waiting for Wi-Fi connection—flash slowly, during Wi-Fi connection—flash quickly, Wi-Fi connection successfully—always bright.
- Factory reset:** The blue light and the green light flash alternately.
- Low power alarm:** The blue light and the green light flash at the same time.

— 1 —

Step 1: Pre-Setup

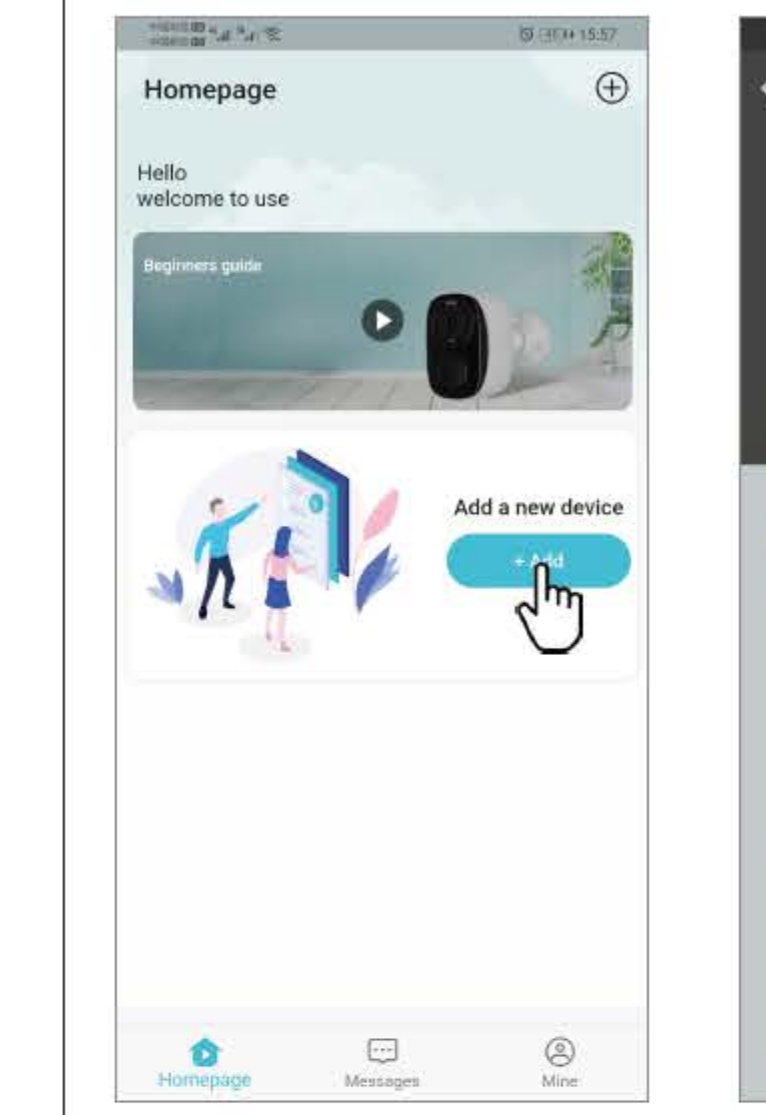
- ✓ Turn on the camera.
- ✓ Restore the camera to the factory settings.
- ✓ Please place the camera within 2 meters range of the router when connecting to Wi-Fi.
- ✓ Connect your phone to Wi-Fi and clear the Wi-Fi password.

Step 2: APP Download and Registration



- 1 Search for “O-KAM Pro” in APP Store or Google Play, or scan the QR cord above to download the APP.

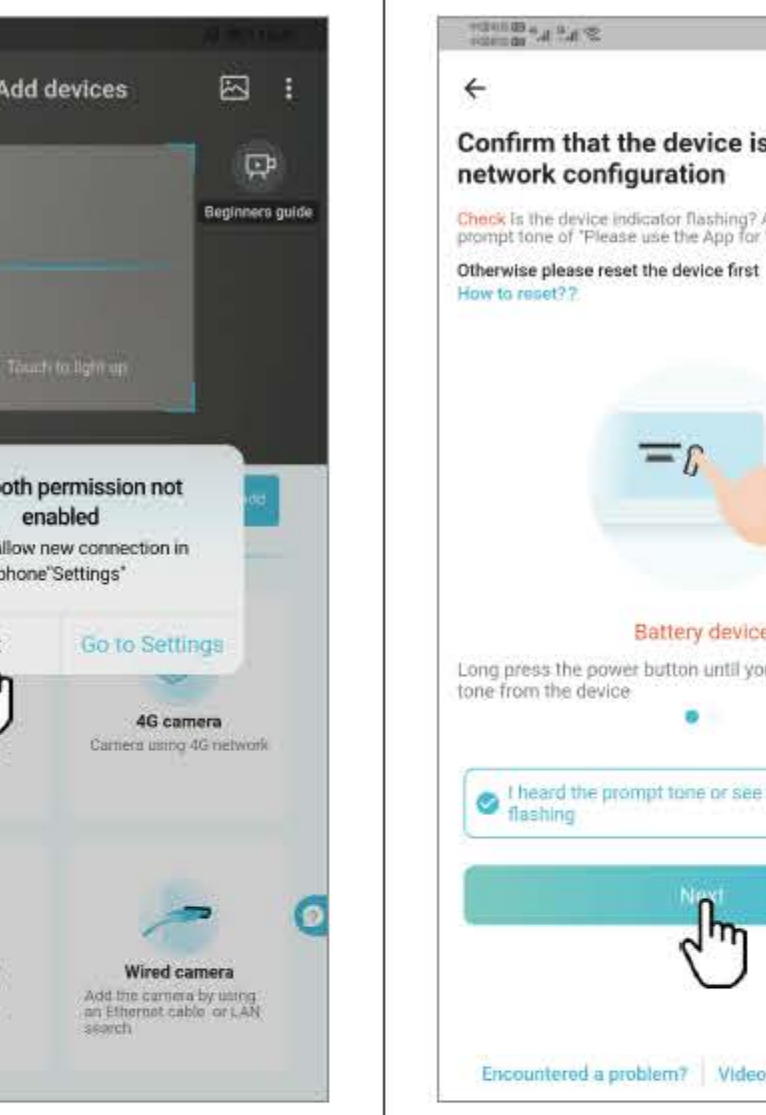
— 2 —



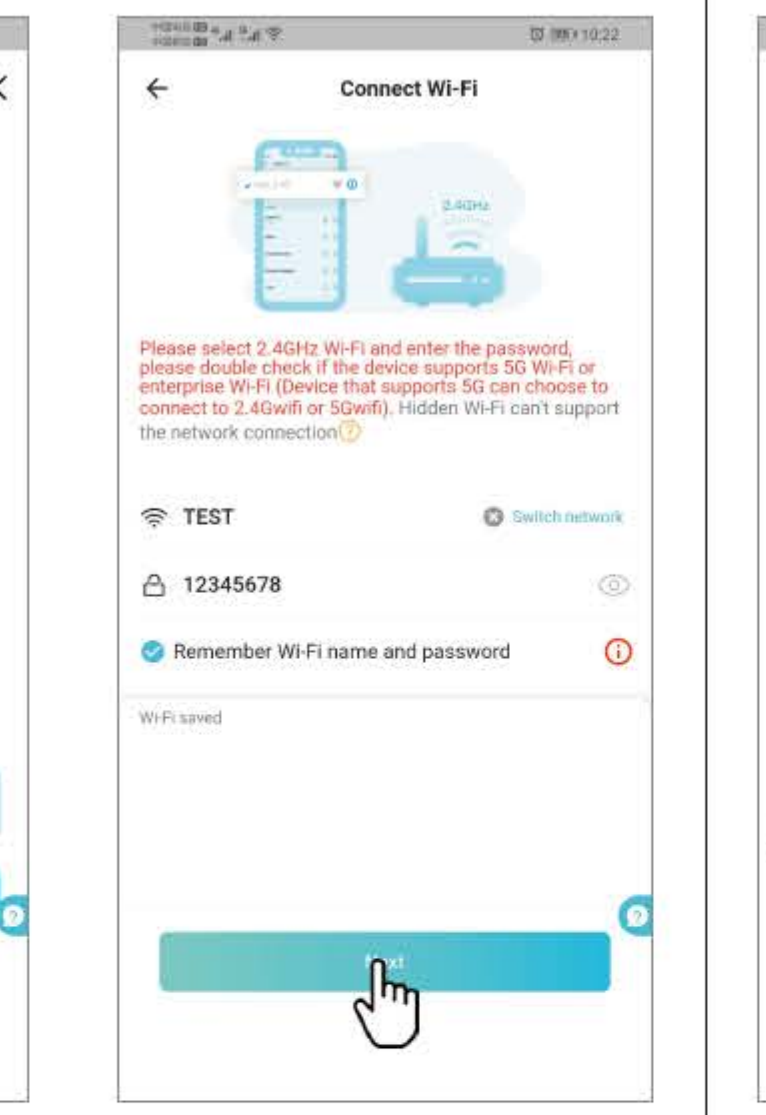
- 2 Click “Register now” and register your account according to the prompts.

Step 3: Add Devices to the APP

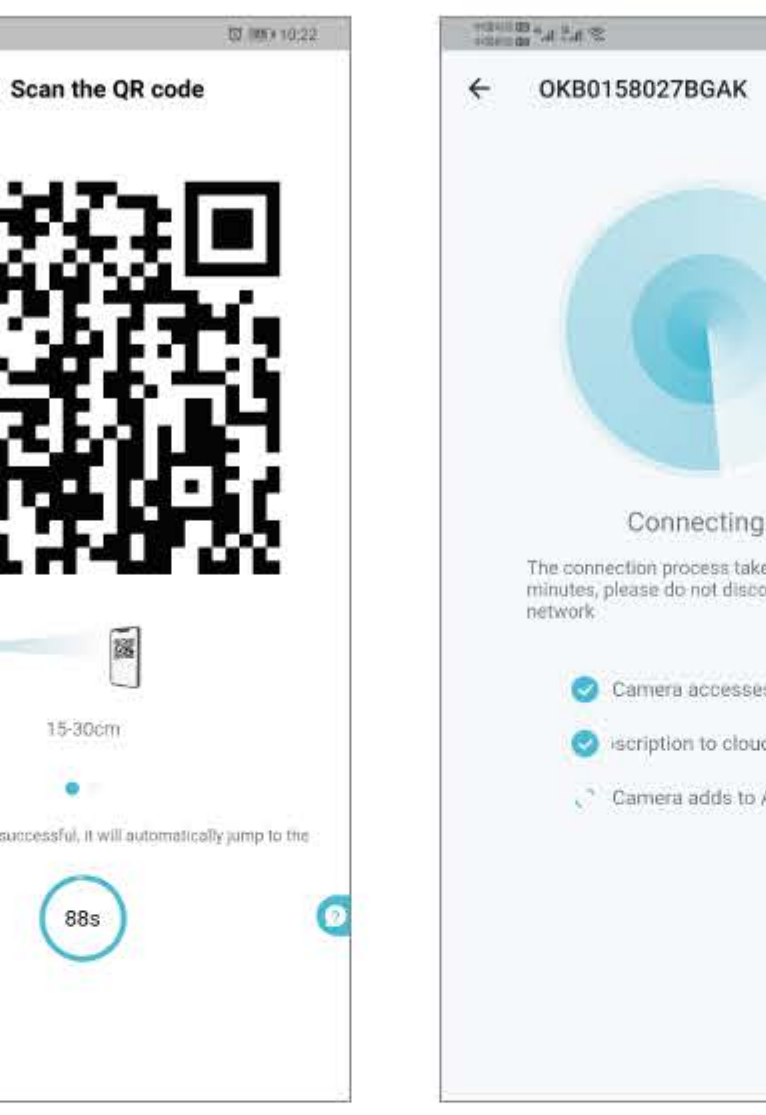
Method One: Scan QR code to add camera



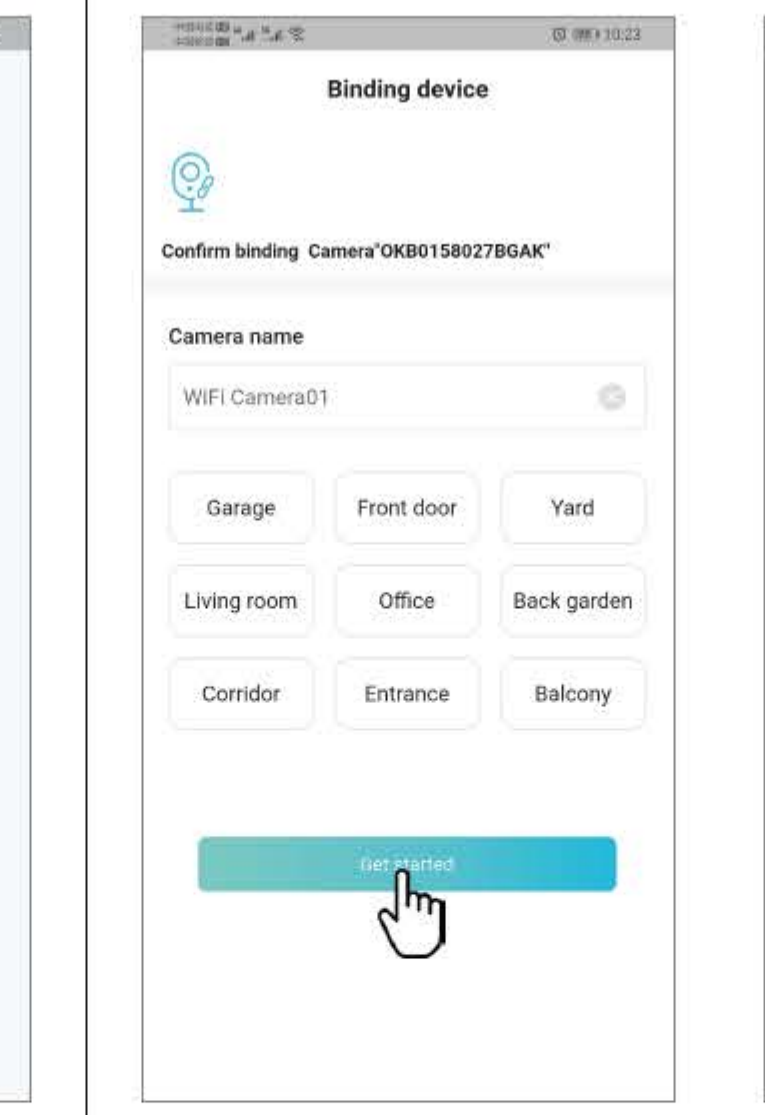
- 1 Click “Add”, then scan the QR code on the camera, or directly select “Wireless Camera”. Please select “I got it” when prompting Bluetooth permissions.



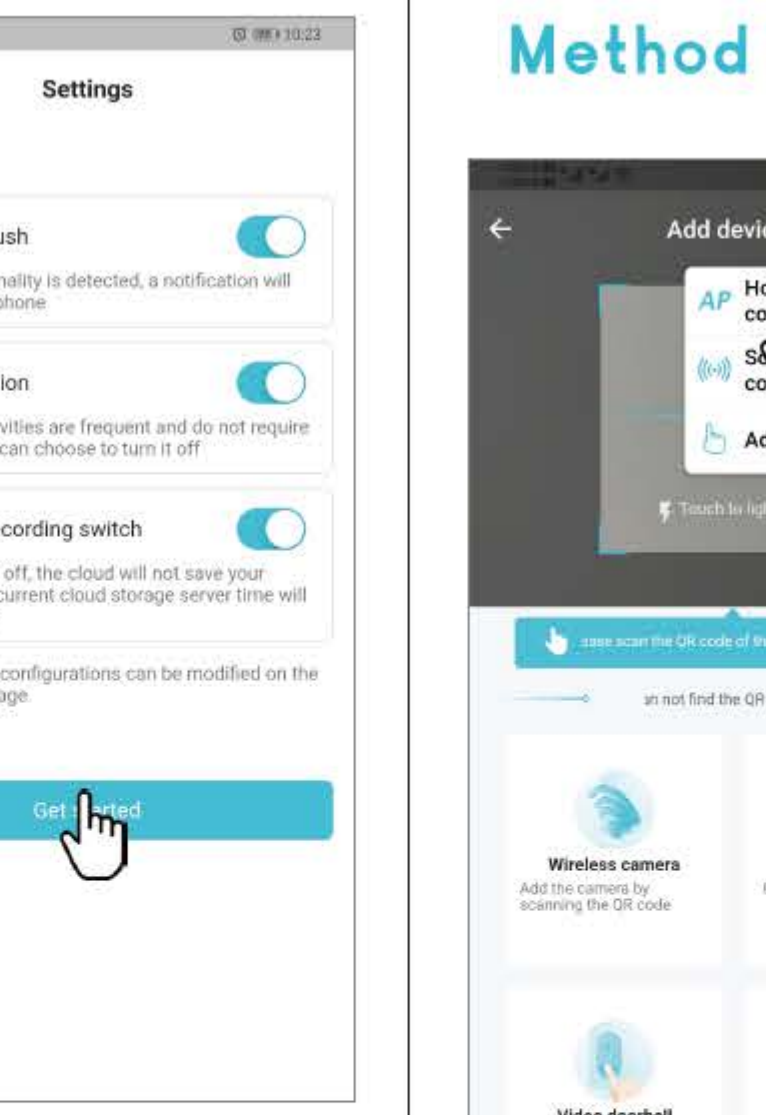
- 2 Turn on the camera and restore it to the factory settings.



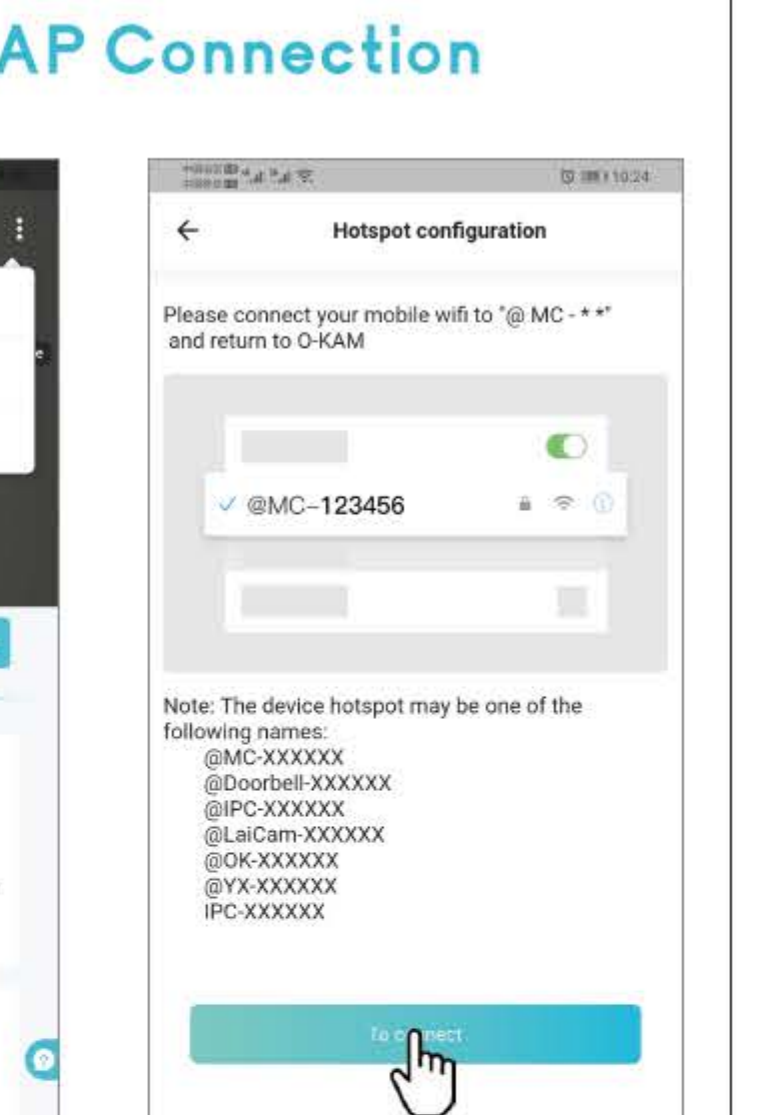
- 3 Confirm the Wi-Fi you want to connect and enter the correct password.



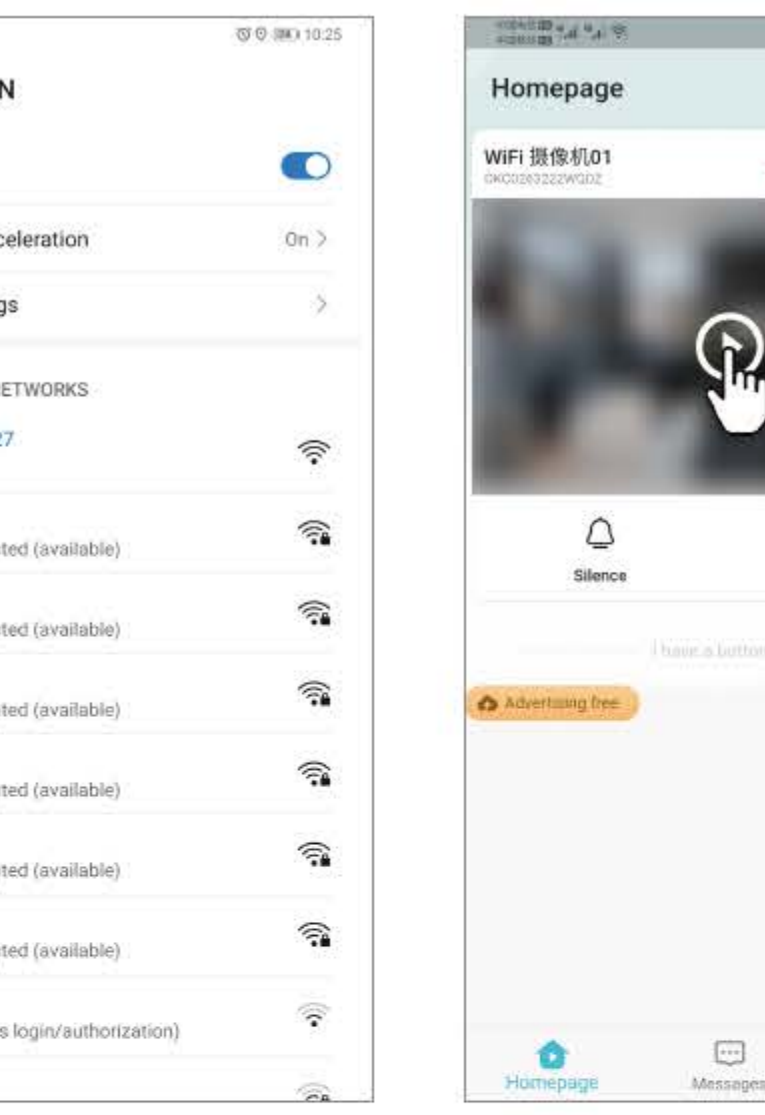
- 4 Scan the QR code generated by the APP with the camera lens until the camera emits a beep or the blue light flashes quickly.



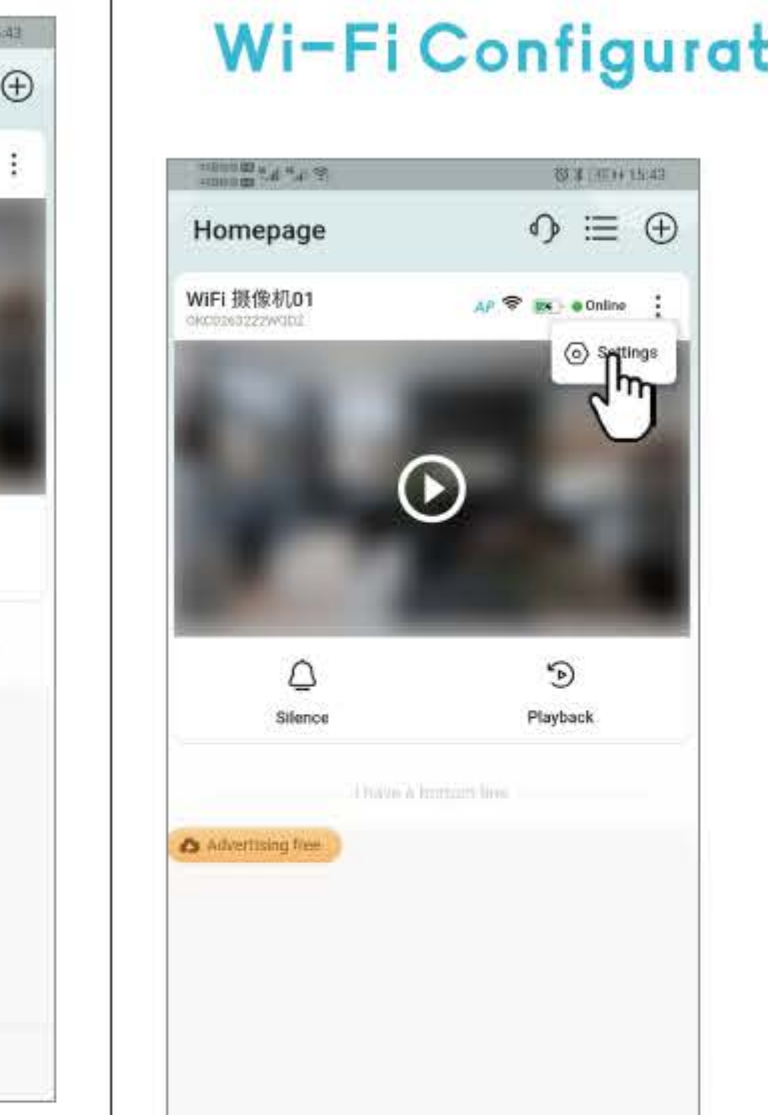
- 5 Wait for the camera to bind to the APP.



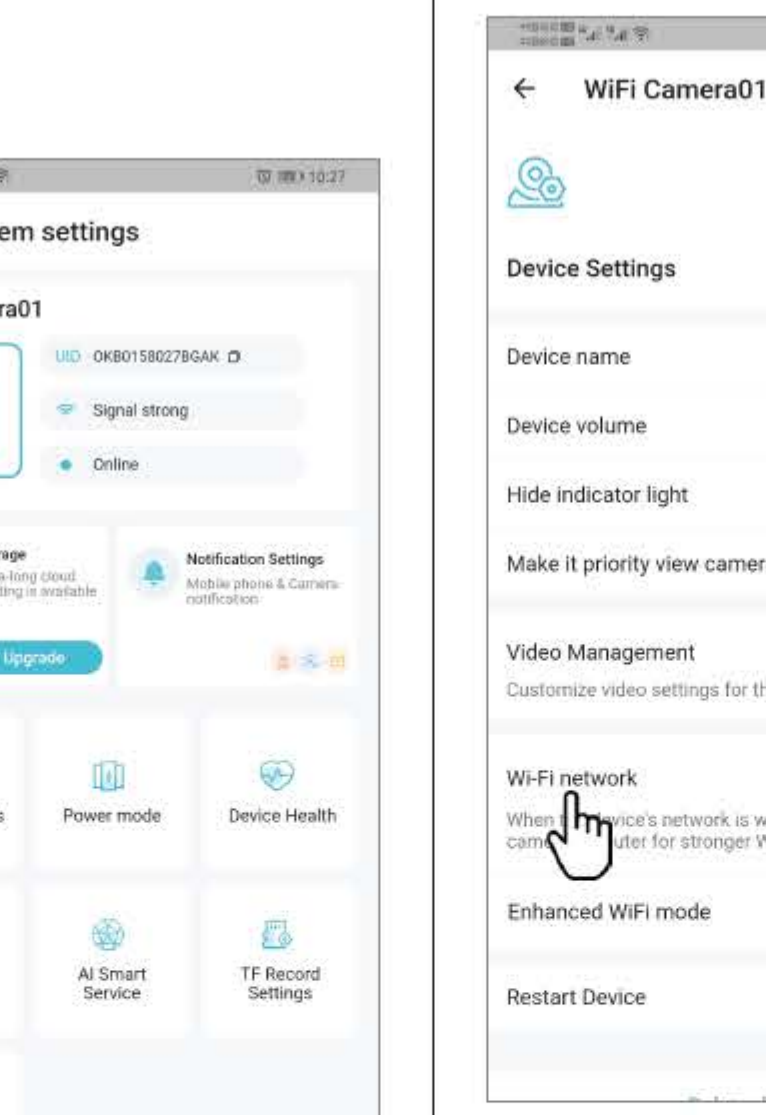
- 6 Click “Get started” in turn.



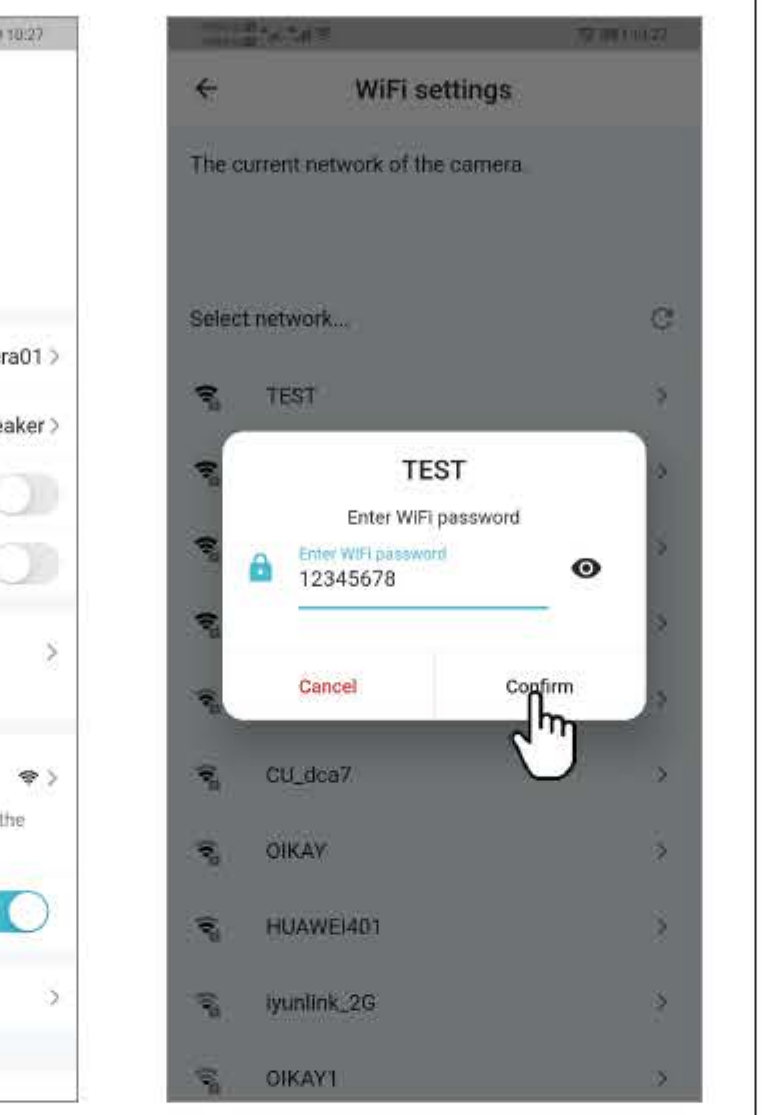
- 1 Click the icon in the upper right corner and select “Hotspot Configuration”.



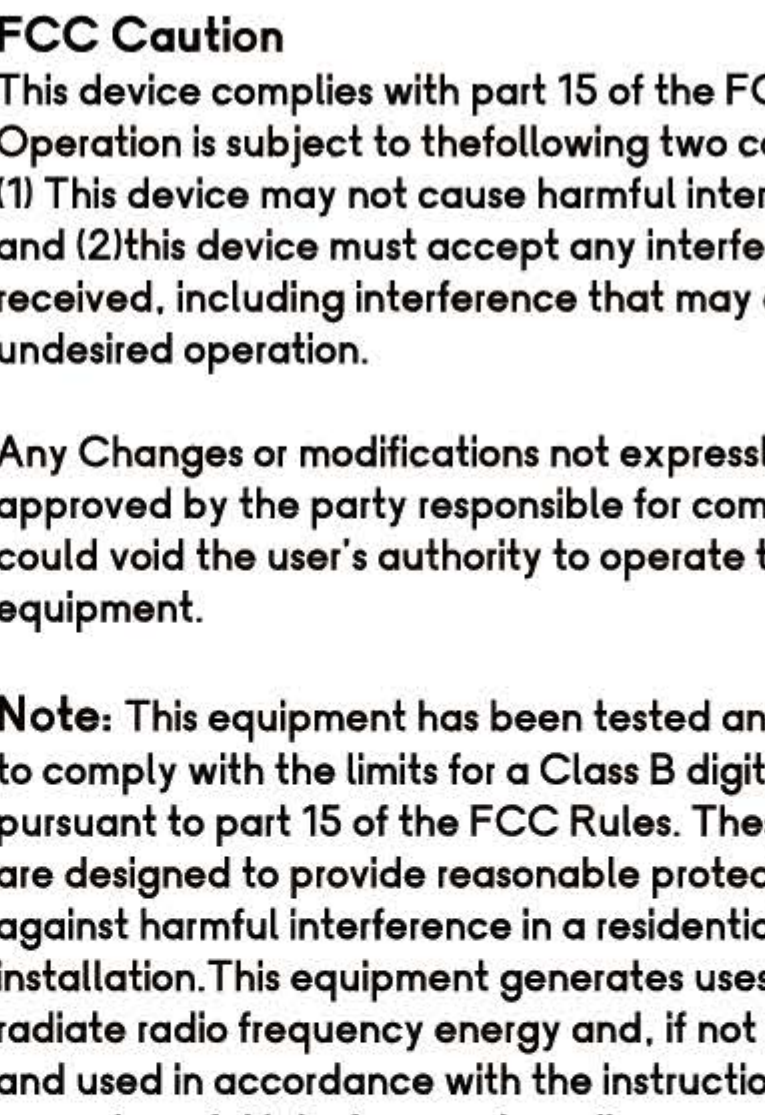
- 2 Click “To connect”.



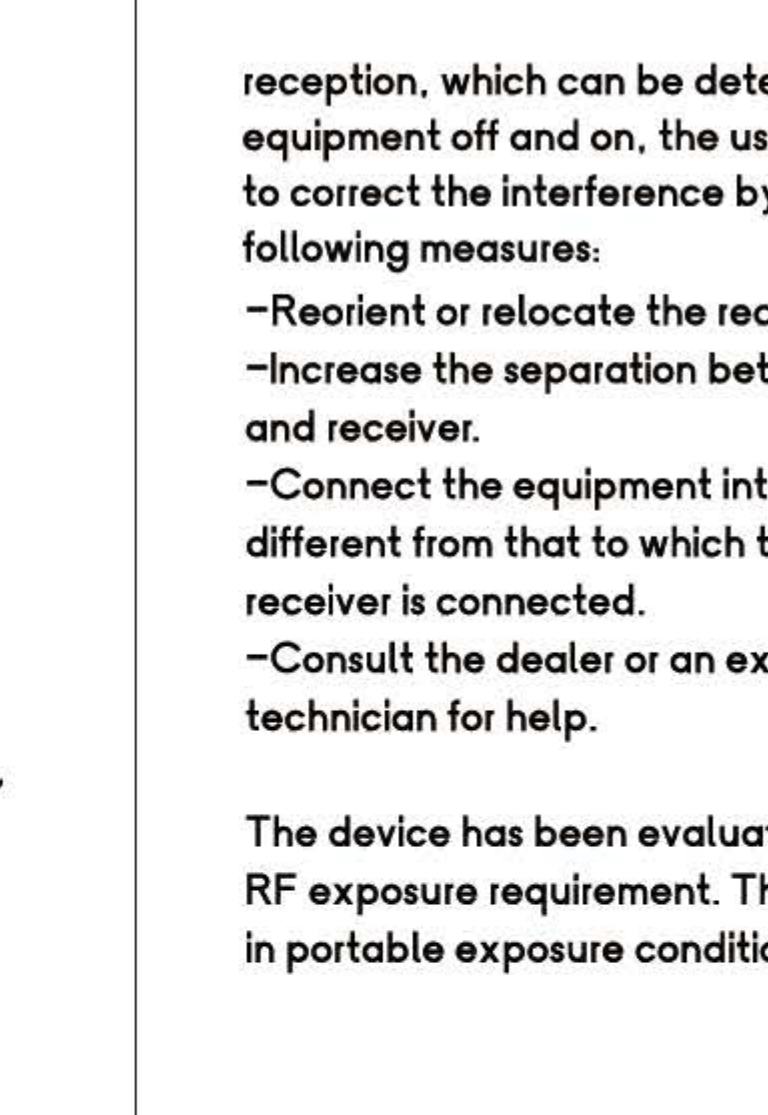
- 3 Enter the network settings of your phone, select the signal of “@ OK - **” and connect.



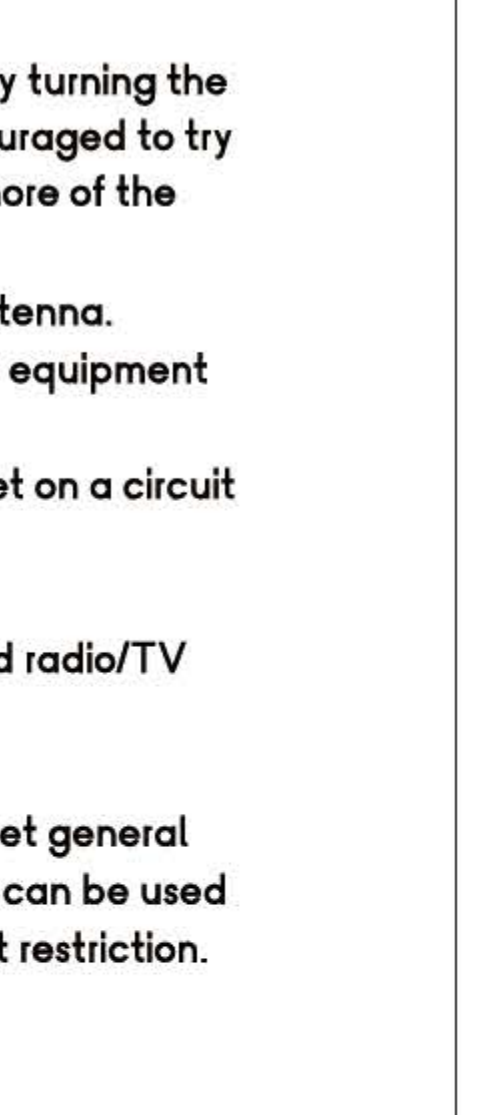
- 4 Back to the APP to automatically add the device, click the play button to watch.



- 1 Click “Settings”.



- 2 Select “Device Settings”.



- 3 Click “Wi-Fi network”.

- 4 Select the Wi-Fi you want to connect and enter the correct password.

- 5 Click “Wi-Fi network”.

- 6 Select the Wi-Fi you want to connect and enter the correct password.

- 7 Click “Wi-Fi network”.

- 8 Select the Wi-Fi you want to connect and enter the correct password.

- 9 Click “Wi-Fi network”.

- 10 Select the Wi-Fi you want to connect and enter the correct password.

- 11 Click “Wi-Fi network”.

- 12 Select the Wi-Fi you want to connect and enter the correct password.

- 13 Click “Wi-Fi network”.

- 14 Select the Wi-Fi you want to connect and enter the correct password.

- 15 Click “Wi-Fi network”.

- 16 Select the Wi-Fi you want to connect and enter the correct password.

- 17 Click “Wi-Fi network”.

- 18 Select the Wi-Fi you want to connect and enter the correct password.

- 19 Click “Wi-Fi network”.

- 20 Select the Wi-Fi you want to connect and enter the correct password.

- 21 Click “Wi-Fi network”.

- 22 Select the Wi-Fi you want to connect and enter the correct password.

- 23 Click “Wi-Fi network”.

- 24 Select the Wi-Fi you want to connect and enter the correct password.

- 25 Click “Wi-Fi network”.

- 26 Select the Wi-Fi you want to connect and enter the correct password.

- 27 Click “Wi-Fi network”.

- 28 Select the Wi-Fi you want to connect and enter the correct password.

- 29 Click “Wi-Fi network”.

- 30 Select the Wi-Fi you want to connect and enter the correct password.

- 31 Click “Wi-Fi network”.

- 32 Select the Wi-Fi you want to connect and enter the correct password.

- 33 Click “Wi-Fi network”.

- 34 Select the Wi-Fi you want to connect and enter the correct password.

- 35 Click “Wi-Fi network”.

- 36 Select the Wi-Fi you want to connect and enter the correct password.

- 37 Click “Wi-Fi network”.

- 38 Select the Wi-Fi you want to connect and enter the correct password.

- 39 Click “Wi-Fi network”.

- 40 Select the Wi-Fi you want to connect and enter the correct password.

- 41 Click “Wi-Fi network”.

- 42 Select the Wi-Fi you want to connect and enter the correct password.

- 43 Click “Wi-Fi network”.

- 44 Select the Wi-Fi you want to connect and enter the correct password.

- 45 Click “Wi-Fi network”.

- 46 Select the Wi-Fi you want to connect and enter the correct password.

- 47 Click “Wi-Fi network”.

- 48 Select the Wi-Fi you want to connect and enter the correct password.

- 49 Click “Wi-Fi network”.

- 50 Select the Wi-Fi you want to connect and enter the correct password.

- 51 Click “Wi-Fi network”.

- 52 Select the Wi-Fi you want to connect and enter the correct password.

- 53 Click “Wi-Fi network”.

- 54 Select the Wi-Fi you want to connect and enter the correct password.

- 55 Click “Wi-Fi network”.

- 56 Select the Wi-Fi you want to connect and enter the correct password.

- 57 Click “Wi-Fi network”.

- 58 Select the Wi-Fi you want to connect and enter the correct password.

- 59 Click “Wi-Fi network”.

- 60 Select the Wi-Fi you want to connect and enter the correct password.

- 61 Click “Wi-Fi network”.

- 62 Select the Wi-Fi you want to connect and enter the correct password.

- 63 Click “Wi-Fi network”.

- 64 Select the Wi-Fi you want to connect and enter the correct password.

- 65 Click “Wi-Fi network”.

- 66 Select the Wi-Fi you want to connect and enter the correct password.

- 67 Click “Wi-Fi network”.

- 68 Select the Wi-Fi you want to connect and enter the correct password.

- 69 Click “Wi-Fi network”.

- 70 Select the Wi-Fi you want to connect and enter the correct password.

- 71 Click “Wi-Fi network”.

- 72 Select the Wi-Fi you want to connect and enter the correct password.

- 73 Click “Wi-Fi network”.

- 74 Select the Wi-Fi you want to connect and enter the correct password.

- 75 Click “Wi-Fi network”.

- 76 Select the Wi-Fi you want to connect and enter the correct password.

- 77 Click “Wi-Fi network”.

- 78 Select the Wi-Fi you want to connect and enter the correct password.

- 79 Click “Wi-Fi network”.

- 80 Select the Wi-Fi you want to connect and enter the correct password.

- 81 Click “Wi-Fi network”.

- 82 Select the Wi-Fi you want to connect and enter the correct password.

- 83 Click “Wi-Fi network”.

- 84 Select the Wi-Fi you want to connect and enter the correct password.

- 85 Click “Wi-Fi network”.

- 86 Select the Wi-Fi you want to connect and enter the correct password.

- 87 Click “Wi-Fi network”.

- 88 Select the Wi-Fi you want to connect and enter the correct password.

- 89 Click “Wi-Fi network”.

- 90 Select the Wi-Fi you want to connect and enter the correct password.

- 91 Click “Wi-Fi network”.

