

# Gravio Receiver (GZUSB001)

Infoteria Pte.co.ltd



## Version update

V1.0.0      2018/03/15

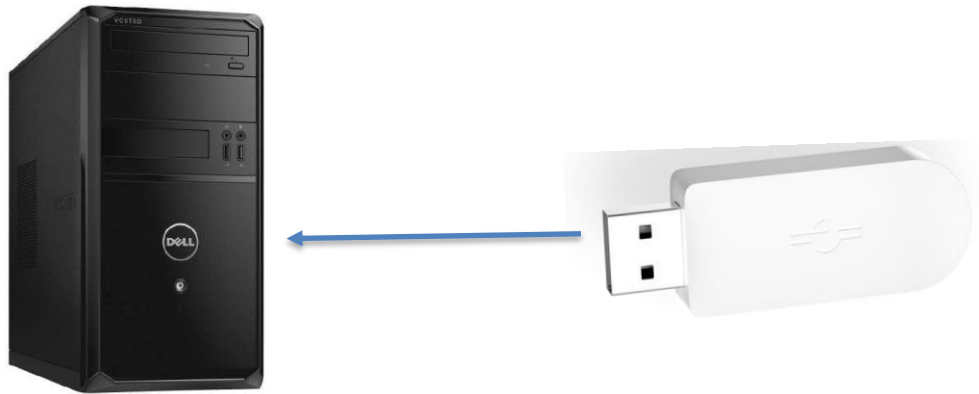
## 1. Product introduction

The Gravio Receiver USB converter provides USB2.0 standard interface and is directly powered by USB. It can be easily connected to the master devices (such as personal computers). Driven by USB serial port, the master device can communicate with the built-in ZigBee module through virtual serial port, and actually works as a ZigBee-RS232 converter. The device is built with enhanced ZigBee module. The gateway is usually used with PC, which is mainly used for on-site debugging or demonstration.

### 1.1 Working environment support

- Windows 98SE
- Windows XP
- Windows 2000
- Windows 7
- MAC OS-9
- MAC OS-X
- Linux

## 2. Wireless connection steps



Connect USB/Receiver to PC host USB interface and control the wireless communication of device through PC serial communication software

1. Use the PC serial communication assistant to set the communication baud rate as 115200.
2. Use the command of sending a new line, and send “help” to the serial port via the PC’s serial communication assistant.
3. Control the device according to the printed command prompt of the PC's serial communication assistant window.
4. The product can be used for debugging and communication control of Zigbee related equipment on site.

## 3. Driver installation wizard

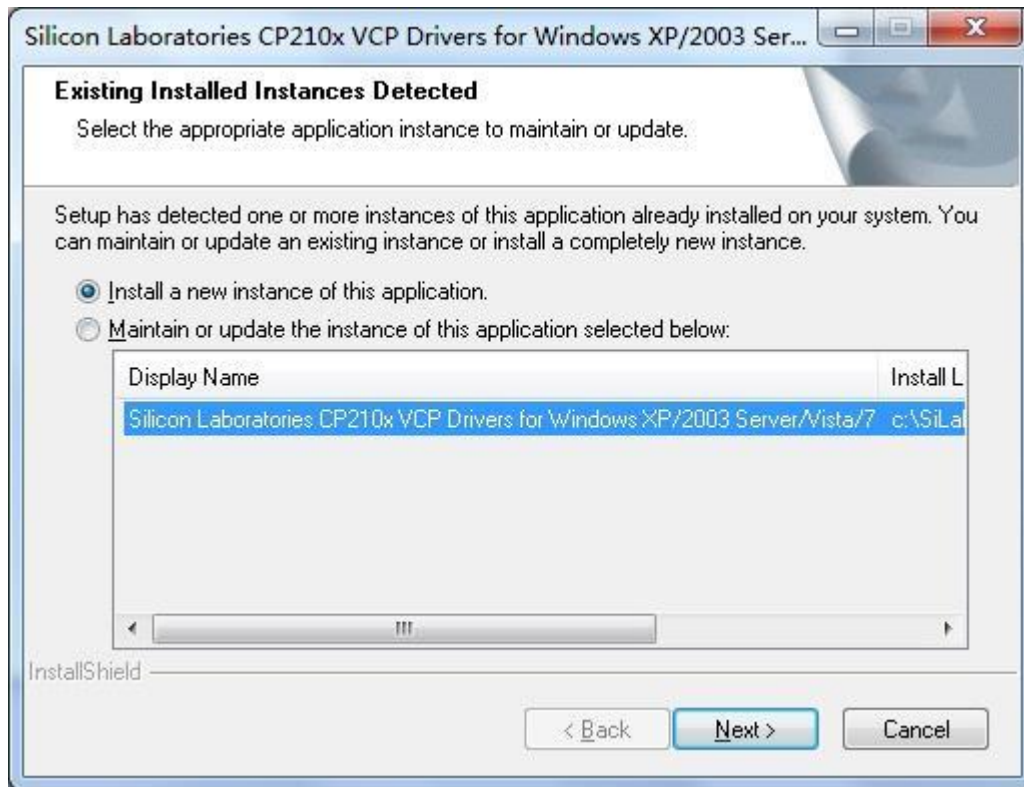
Users need to download the driver named “CP210x\_VCP\_Win\_XP\_S2K3\_Vista\_7” in <https://www.silabs.com/products/development-tools/software/usb-to-uart-bridge-vcp-drivers>. After installing the driver, the system automatically generates a virtual COM port through which the system can connect to the serial port of the Gzusb001 module.

°

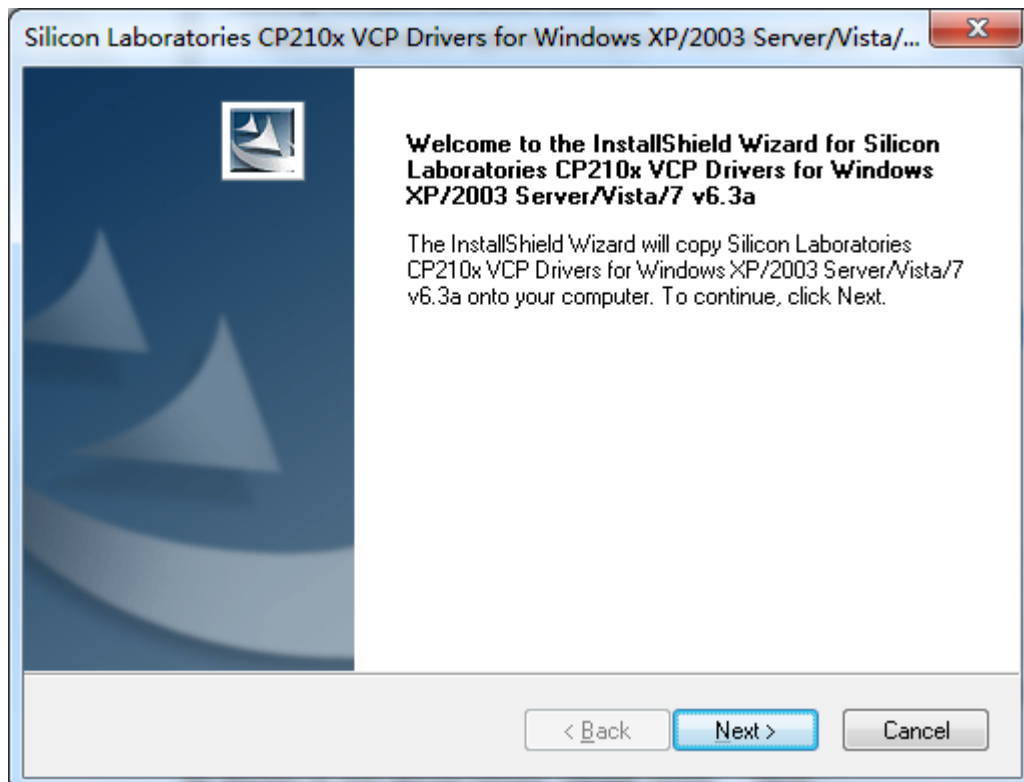
For more information on the Gzusb001 wireless module, please download the relevant documents from [www.silabs.com](http://www.silabs.com).

:

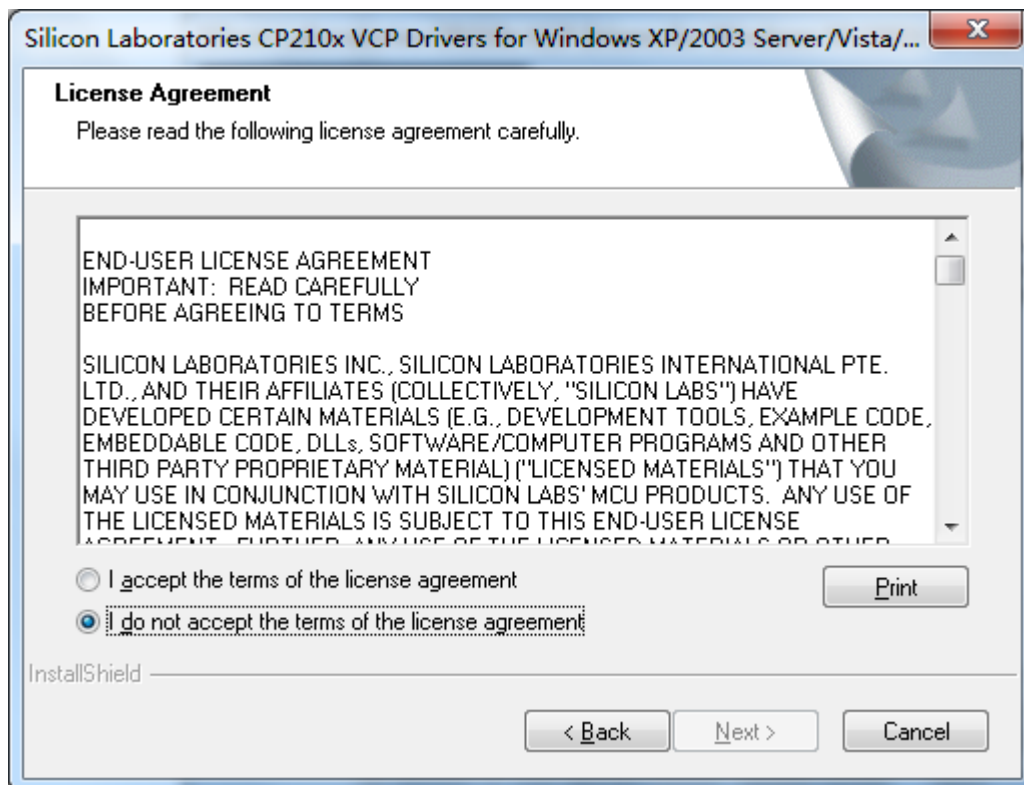
The “CP210x\_VCP\_Win\_XP\_S2K3\_Vista\_7” driver is installed as follows:



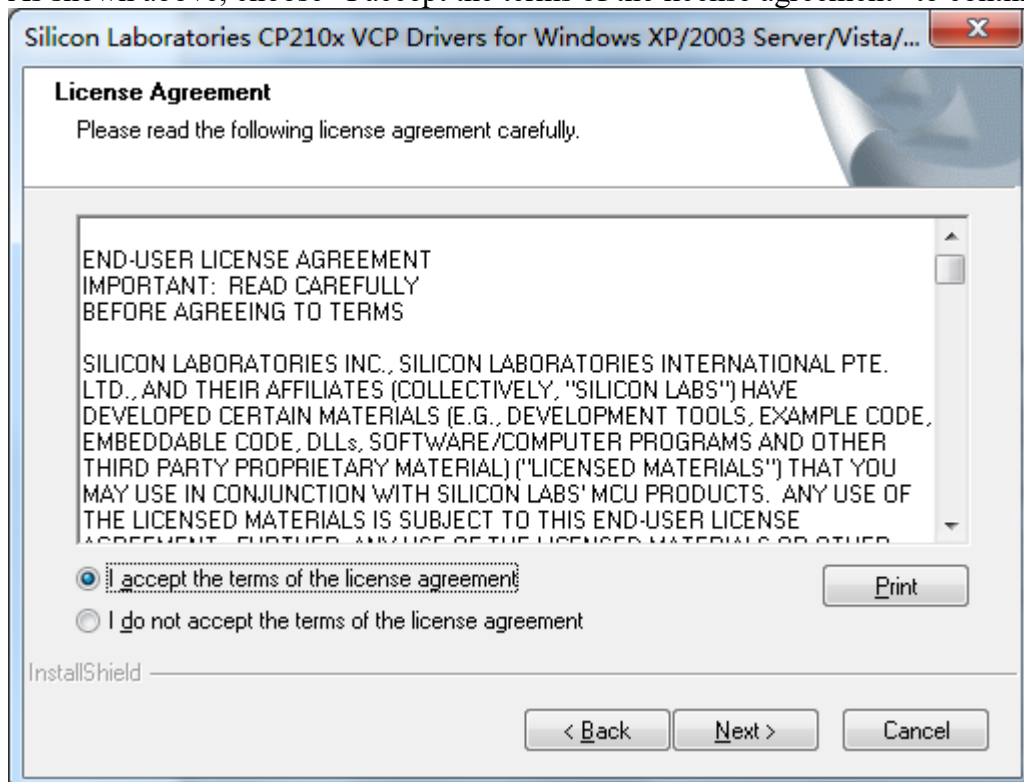
As shown above, click on “Next” to continue;



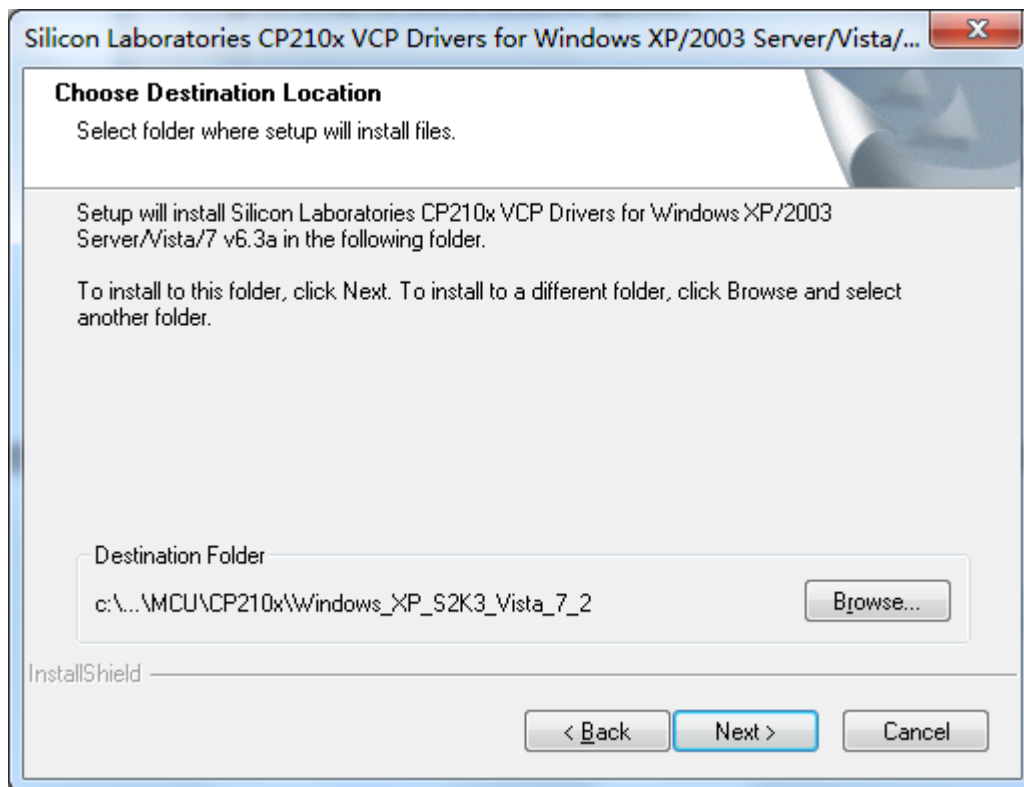
As shown above, click on “Next” to continue;



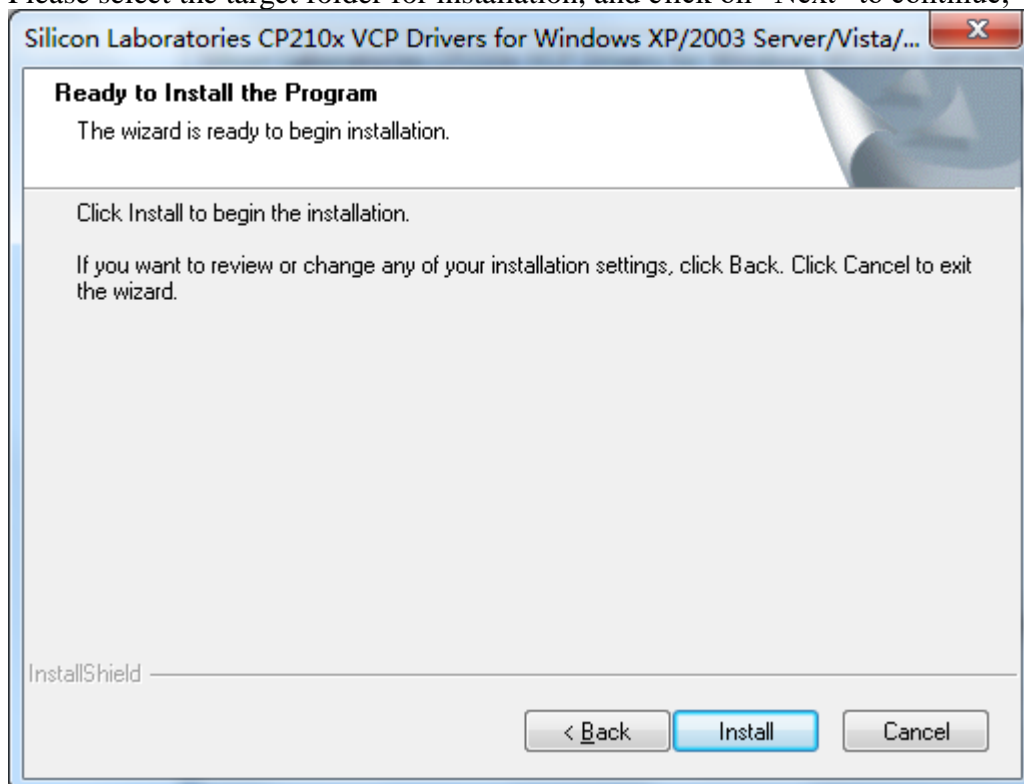
As shown above, choose “I accept the terms of the license agreement” to continue;



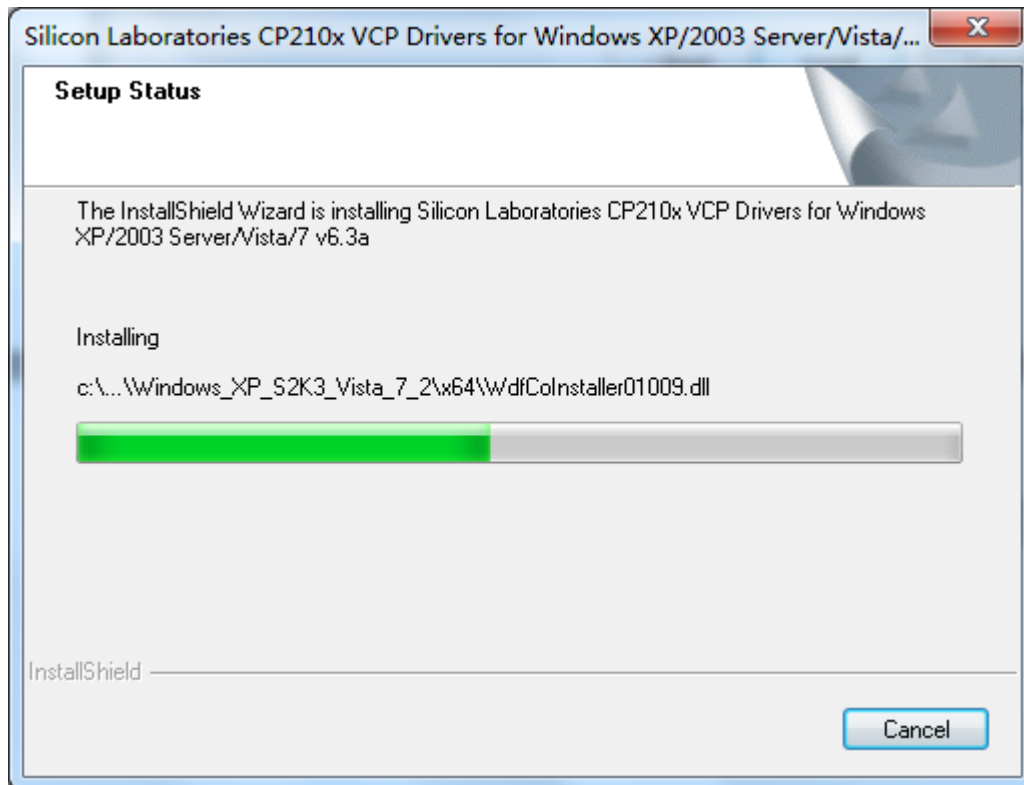
As shown above, click on “Next” to continue;



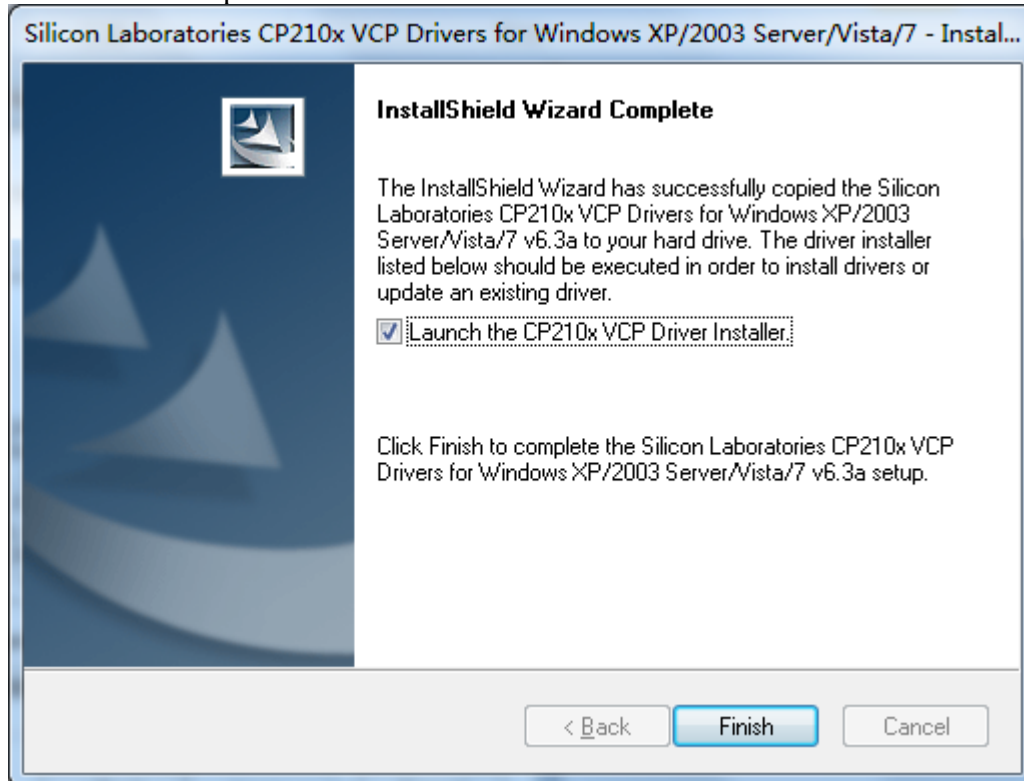
Please select the target folder for installation, and click on “Next” to continue;



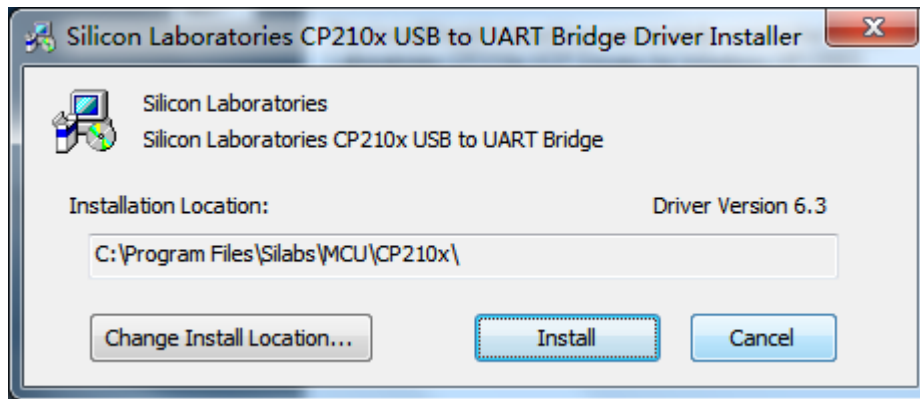
Click on “Next” to continue;



As shown in the following figure, the system prompts that the “CP210x\_VCP\_Win\_XP\_S2K3\_Vista\_7” installation file has been successfully copied to the user's hard disk. Please click on “Launch the CP210x VCP Driver Installer” to complete the installation.



Click “Finish” and the following dialog box appears;



Click “Install” to complete the driver installation.

## 5. Self made firmware development

There are two ways to develop self made firmware:

Upgrade the IAP through the USB-Serial port, which requires the BootLoader program in the module, and the firmware program is sent to upgrade according to the BootLoader upgrade command.

When there is no BootLoader program in the module, the development tool Jlink and the Stack development environment of EFR32 are needed. Firmware programs can be programmed to the EFR32 chip of the module through the official commander programming tool of SILABS, and can also be downloaded directly in the IAR for ARM development environment.

#### FCC Warning Statement

Changes or modifications not expressly approved by the party responsible for compliance could void the user's authority to operate the equipment. This equipment has been tested and found to comply with the limits for a Class B digital device, pursuant to Part 15 of the FCC Rules. These limits are designed to provide reasonable protection against harmful interference in a residential installation. This equipment generates uses and can radiate radio frequency energy and, if not installed and used in accordance with the instructions, may cause harmful interference to radio communications. However, there is no guarantee that interference will not occur in a particular installation. If this equipment does cause harmful interference to radio or television reception, which can be determined by turning the equipment off and on, the user is encouraged to try to correct the interference by one or more of the following measures:

- Reorient or relocate the receiving antenna.
- Increase the separation between the equipment and receiver.
- Connect the equipment into an outlet on a circuit different from that to which the receiver is connected.
- Consult the dealer or an experienced radio/TV technician for help.

#### FCC Radiation Exposure Statement

The antennas used for this transmitter must be installed to provide a separation distance of at least 20 cm from all persons and must not be co - located for operating in conjunction with any other antenna or transmitter.