

G60 Pro

Industry Inspection Device

User Manual

Version 1.7

Release Date: 2024.09.30

Copyright

Copyright © 2023 AMobile Solutions Corp. All Rights Reserved.

This document contains proprietary information protected by copyright. No part of this manual may be reproduced by any mechanical, electronic, or other means in any form without prior written permission of the manufacturer.

Disclaimer

The information in this document is subject to change without prior notice in order to improve the reliability, design and function. It does not represent a commitment on the part of the manufacturer. Under no circumstances will the manufacturer be liable for any direct, indirect, special, incidental, or consequential damages arising from the use or inability to use the product or documentation, even if advised of the possibility of such damages.

About This Manual

This user's manual provides the general information and installation instructions for the product. The manual is meant for the experienced users and integrators with hardware knowledge of personal computers. If you are not sure about any description in this manual, consult your vendor before further handling.

We recommend that you keep one copy of this manual for the quick reference for any necessary maintenance in the future. Thank you for choosing AMobile products

Change Record:

Version	Change record	Release Date
1.0	Initial	2023/12/22
1.1	Add Safety Declaration	2024/01/08
1.2	Modify Drawing	2024/03/07
1.3	Modify Artwork	2024/06/11
1.4	Add doc to use	2024/06/25
1.5	Add Doc no in end page	2024/06/27
1.6	Add battery voltage	2024/07/08
1.7	Add Company information in Additional Information & Technical Support chapter. ATEX Certificate No: TPS 24 ATEX 105130 0005 X Rev. 00 Articles in Special Conditions for Safe Use chapter.	2024/08/30

Declaration of Conformity

CE

Environmental Conditions

Device Operating Temperature: -10° C to 50°C Device Storage temperature: -30° C to 70°C Working

humidity 10% ~ 90%RH

Hereby, AMobile Solutios Corp. Limited Taiwan Branch, declares that this Industry Inspection Device/ G60 Pro is in compliance with the essential Requirements and other relevant provisions of Radio Equipment Directive 2014/53/EU.

Environment friendly disposal

You can help protect the environment!

Please remember to respect the local regulations: hand in the non-working electrical equipment to an appropriate waste disposal center.

A warning that batteries (battery pack or batteries installed) shall not be exposed to excessive heat such as sunshine, fire or the like.

DISPOSE OF USED BATTERYS ACCORDING TO THE INSTRUCTINS

- CAUTION RISK OF EXPLOSION IF BATTERY IS REPLACED BY AN INCORRECT TYPE.
- DO NOT OPEN WHEN AN EXPLOSIVE ATOM SPHERE IS PRESENT
- DO NOT CHARGE THE BATTERY IN HAZARDOUS LOCATION
- USE ONLY Shenzhen Cholibpower Technology Co., LTD. CLP1107(5100mAh) BATTERIES

Charge at constant current of 0.2C until voltage reaches 4.25V, then charge at constant voltage 4.25V till charge current reduce to 0.02C.



The following standards have been applied for the investigation of compliance:

- Use careful with the earphone maybe possible excessive sound pressure from earphones and headphones can cause hearing loss.
- The product shall only be connected to a USB interface of version USB2.0 or higher and that the connection to a power USB is prohibited.
- The RF distance between body and mobile phone is 5mm.
- 5G (if necessary) For 5150-5250 and 5725-5850 frequency band,
Operations in the 5150-5250 and 5725-5850 band are restricted to indoor usage only.

Product Name:	Industry Inspection Device
Model No.:	G60 Pro
Brand Name:	N/A
Adapter:	NA
Battery:	Manufacturer: Shenzhen cholibpower Technology co.,Ltd Model No.: CLP1107 Rated Capacity:5100mAh
USB Cable:	Manufacturer: AMobile Solutions Corp Model No.: G60 Pro Cable Length: 1000mm

Draft ETSI EN 301 489-1 V2.2.0 (2017-03)
 Final draft ETSI EN 301 489-3 V2.1.1 (2017-03)
 Draft ETSI EN 301 489-17 V3.2.0 (2017-03)
 Draft ETSI EN 301 489-19 V2.1.0 (2017-03)
 Draft ETSI EN 301 489-52 V1.1.0 (2016-11)
 ETSI EN 301 511 V9.0.2 (2003-03)
 ETSI EN 301 908-1 V11.1.1 (2016-07)
 ETSI EN 301 908-2 V11.1.1 (2016-07)
 ETSI EN 301 908-13 V11.1.1 (2016-07)
 ETSI EN 303 413 V1.1.1 (2017-06)
 ETSI EN 300 330 V2.1.1 (2017-02)
 ETSI EN 301 893 V2.1.1 (2017-05)
 ETSI EN 300 328 V2.1.1 (2016-11)
 EN 62479: 2010
 EN 50566: 2017
 EN 50360: 2017
 EN 62209-1: 2016
 EN 62209-2: 2010
 IEC 62133-2: 2017
 EN 62471: 2008
 EN 60950-1: 2006 +A11: 2009 +A1: 2010+A12: 2011+A2: 2013
 EN 50332-1: 2013
 EN 50332-2: 2013
 EN 55032:2015
 EN 55035: 2010
 EN 61000-3-2: 2014
 EN 61000-3-3: 2013

Manufacturer Name:	AMobile Solutions Corp
Manufacturer Address:	8F.-1, No.700, Zhongzheng Rd., Zhonghe Dist., New Taipei City 235, Taiwan

Operation Frequency:	<p>GSM/GPRS/EGPRS 900: Tx: 880-915MHz, Rx: 925-960MHz</p> <p>GSM/GPRS/EGPRS 1800: Tx: 1710-1785MHz, Rx: 1805- 1880MHz</p> <p>GSM/GPRS/EDGE 850: 824-849MHz (Not used in Europe)</p> <p>PCS/GPRS/EDGE 1900: 1850-1910MHz (Not used in Europe)</p> <p>WCDMA Band I: Tx: 1920-1980MHz, Rx: 2110-2170MHz WCDMA Band VIII: Tx:</p> <p>880-915MHz, Rx: 925-960MHz</p> <p>WCDMA Band II: 1850-1910MHz (Not used in Europe) WCDMA Band V: 824-849MHz (Not used in Europe) WCDMA Band IV:1710-1755MHz (Not used in Europe) LTE Band 1: Tx:</p> <p>1920-1980MHz, Rx: 2110-2170MHz LTE Band 3: Tx:</p> <p>1710-1785MHz, Rx: 1805-1880MHz LTE Band 7: Tx:</p> <p>2500-2570MHz, Rx: 2620-2690MHz LTE Band 8: Tx:</p> <p>880-915MHz, Rx: 925-960MHz</p> <p>LTE Band 20: Tx: 832-862MHz, Rx: 791-821MHz</p> <p>LTE Band 38: Tx: 2570-2620MHz, Rx: 2570-2620MHz LTE Band 40:</p> <p>Tx: 2300-2400MHz, Rx: 2300-2400MHz</p> <p>LTE Band 2: 1850-1910MHz (Not used in Europe)</p>
Operation Frequency:	<p>LTE Band 4: 1710-1755MHz (Not used in Europe) LTE Band 5: 823-850MHz (Not used in Europe) LTE Band 7:</p> <p>2500-2570MHz (Not used in Europe) LTE Band 12:</p> <p>699~716MHz (Not used in Europe) LTE Band 17:</p> <p>704-716MHz (Not used in Europe) WiFi: 802.11 a/b/g/n/ac/ax (optional)</p> <p>802.11n HT40: 2422-2462MHz</p> <p>802.11a/n/ac: 5150-5250MHz</p> <p>Bluetooth: BT5.2 2402-2480MHz GPS:</p> <p>1.57GHz</p> <p>SO/IEC14443A/B; ISO/IEC15693; Tags T1/2/3/4/5</p>
Max. RF output power:	<p>GSM900: 33 dBm</p> <p>GSM1800: 30 dBm</p> <p>WCDMA FDD Band: 24 dBm LTE FDD/TDD Band: 23 dBm</p> <p>WiFi (2.4G): 9.45 dBm EIRP WiFi (5G): 9.40 dBm EIRP</p> <p>Bluetooth: 6.48 dBm EIRP</p> <p>NFC: 15.38 dBμA/m</p>

The RF frequencies can be used in Europe without restriction.

This product is intended for sale and application in a business environment.

Emergency call

If any emergency arises, dial 112/911 (or other emergency call number) for emergency help. Due to the nature of cellular networking, the success of emergency call is not guaranteed.

FCC Warning:

This device complies with Part 15 of the FCC Rules. Operation is subject to the following two conditions:

1. This device may not cause harmful interference, and
2. This device must accept any interference received, including interference that may cause undesired operation.

Any changes or modifications not expressly approved by the guarantee of this device could void the user's authority to operate the device.

This equipment has been tested and found to comply with the limits for a Class B digital device, pursuant to part 15 of the FCC Rules. These limits are designed to provide reasonable protection against harmful interference in a residential installation. This equipment generates uses and can radiate radio frequency energy and, if not installed and used in accordance with the instructions, may cause harmful interference to radio communications. However, there is no guarantee that interference will not occur in a particular installation. If this equipment does cause harmful interference to radio or television reception, which can be determined by turning the equipment off and on, the user is encouraged to try to correct the interference by one or more of the following measures:

- Reorient or relocate the receiving antenna.
- Increase the separation between the equipment and receiver.
- Connect the equipment into an outlet on a circuit different from that to which the receiver is connected.
- Consult the dealer or an experienced radio/TV technician for help.

The SAR limit of USA (FCC) is 1.6 W/kg averaged over one gram of tissue.

Industry Inspection Device has also been tested against this SAR limit. The highest reported SAR values for head, body- worn accessory, and product specific (Hotspot) are 0.78W/kg, 0.79 W/kg, and

0.79 W/kg respectively. The Max simultaneous SAR is 1.10 W/kg. This device was tested for typical body-worn operations with the back of the handset kept 10mm from the body. To maintain compliance with FCC RF exposure requirements, use accessories that maintain a 10mm separation distance between the user's body and the back of the handset. The use of belt clips, holsters and similar accessories should not contain metallic components in its assembly. The use of accessories that do not satisfy these requirements may not comply with FCC RF exposure requirements, and should be avoided.

5G

For 5150-5250 and 5725-5850 frequency band,

Operations in the 5150-5250 and 5725-5850 band are restricted to indoor usage only.

5G:

Any emission is maintained within the band of operation under all conditions of normal operation. The max. frequency stability is less than 20ppm.

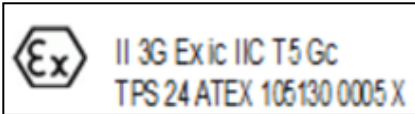
ATEX

ATEX (EX) certified products for use in hazardous or explosive environments.

G60 Pro ATEX certificated at Zone 2, Group IIC, Temperature class T5

Applicable standard: EN IEC 60079-0:2018, EN 60079-11:2012

ATEX Certificate No: TPS 24 ATEX 105130 0005 X Rev. 00



Groups		Gas	Ignition Temperature °C	Temperature Class					
				T1	T2	T3	T4	T5	T6
II	C	acetylene (C2H2)	305						
		carbon disulphide (CS2)	102					♦	
		hydrogen (H2)	560						

RoHS

AMobile Solutions Corporation certifies that all components in its products are in compliance and conform to the European Union's Restriction of Use of Hazardous Substances in Electrical and Electronic Equipment (RoHS) Directive 2002/95/EC.

The above mentioned directive was published on 2/13/2003. The main purpose of the directive is to prohibit the use of lead, mercury, cadmium, hexavalent chromium, polybrominated biphenyls (PBB), and polybrominated diphenyl ethers (PBDE) in electrical and electronic products. Member states of the EU are to enforce by 7/1/2006.

AMobile Solutions Corporation hereby states that the listed products do not contain unintentional additions of lead, mercury, hex chrome, PBB or PBDB that exceed a maximum concentration value of 0.1% by weight or for cadmium exceed 0.01% by weight, per homogenous material. Homogenous material is defined as a substance or mixture of substances with uniform composition (such as solders, resins, plating, etc.). Lead-free solder is used for all terminations (Sn(96-96.5%), Ag(3.0-3.5%) and Cu(0.5%)).

SVHC / REACH

To minimize the environmental impact and take more responsibility to the earth we live, AMobile hereby confirms all products comply with the restriction of SVHC (Substances of Very High Concern) in (EC) 1907/2006 (REACH --Registration, Evaluation, Authorization, and Restriction of Chemicals) regulated by the European Union.

All substances listed in SVHC < 0.1 % by weight (1000 ppm)

Safety Symbols



This symbol indicates that a potential hazard to personal safety exists from a laser source. When this symbol is displayed in this manual, pay special attention to the specific safety information associated with the symbol.

Important Safety Instructions

Read these safety instructions carefully:

1. Read all cautions and warnings on the device.
2. Dropping it or letting it fall may cause damage.
3. Make sure the correct voltage is connected to the device.
4. For pluggable device, the socket outlet should be near the device and should be easily accessible.
5. Disconnect this device from the A/C outlet before cleaning it. Use a moist cloth. Do not use liquid or sprayed detergent for cleaning.
6. Do not scratch or rub the screen with a hard object.
7. Never use any of the solvents, such as Thinner Spray-type cleaner, Wax, Benzene, Abrasive cleaner, Acid or Alkaline solvent, on the display. Harsh chemicals may cause damage to the cabinet and the touch sensor.
8. Remove dirt with a lightly moistened cloth and a mild solvent detergent. Then wipe the cabinet with a soft dry cloth.
9. If the device will not be used for a long time, disconnect it from the power source to avoid damage by transient overvoltage.
10. Never pour any liquid into openings. This may cause electrical shock.
11. Never open the device. For safety reasons, the device should be opened only by qualified service personnel.
12. If one of the following situations arises, get the device checked by service personnel:
 - a. The power cord or plug is damaged.
 - b. Liquid has penetrated into the device.
 - c. The device does not work well, or you cannot get it to work according to the user's manual.
 - d. The device has been damaged.
 - e. The device has obvious signs of breakage.
13. Keep this User's Manual for later reference.
14. Do not leave this device in an uncontrolled environment where the storage temperature is below -10°C (14°F) or above 50°C (122°F). This may damage the device.



Do not use the power adapter that isn't made for the equipment. Supplying the equipment with inappropriate voltage may cause harm to or burn the equipment.



To prevent possible hearing damage, do not listen at high volume levels for long periods

Laser Safety

The device's barcode scanner that uses laser lights is a class 2 laser product. DO NOT stare into the laser beams or point the laser beam at anyone's eyes when the barcode scanner is in operation.



Rechargeable Battery Pack Safety

With very little care, you can optimize the battery life and maximize the lifespan of the battery. Most importantly, use only the device in its ideal operating temperature (refer to [1.5 Specifications](#) on page [8](#)) – do not leave it in a hot trunk during the summer.

- **Important Terms to Understand**

“Battery life” means the time the device will run before it must be recharged (sometimes this is also called “playtime” or “runtime”).

“Battery lifespan” means the total amount of time your battery will last before it must be replaced.

- **Using the Device for the First Time**

Be sure to fully charge (approx. 3 hours) the device when charging the device for the first time.

- **Long-Term Storage & Maintenance**

If you are putting away the device for more than three months, it is recommended that get recharged every three months. If you store with an uncharged battery, it could fall into a deep worn-out state which would render it incapable of holding any charge. Be sure to store the device at the proper temperature (see as [1.5 Specifications](#) on page [8](#)).

- **Battery Lifespan**

The non-replaceable batteries for the device are designed to retain up to 80% of their original capacity after 300 charging and recharging cycles when properly maintained. You may choose to replace new battery with the help of qualified service personnel when it no longer holds the sufficient charge that meets your needs.

- **The lithium-ion battery is currently one of the most popular battery packs.**

The best advantage is that it has no memory effect, so users needn't worry about that issue. Users can charge the battery anytime whether it is fully drained or not. However, it's recommended that users drain the battery until the system shows power shortage warning and then recharge the battery. Doing so is helpful to the reliability of your battery.

- Don't expose the battery to elevated heat situations such as under direct sunlight in a car or near fire.

- Don't disassemble the battery, or the battery leakage might cause skin or eye injury. If electrolyte leaking from the battery contacts your skin or clothing, immediately flush it with running water. If it splashes into eye, rinse the eye at least 15 minutes with clean water and then seek medical attention.
- To avoid battery leakage or explosion, don't discard the battery into water or fire, or put them near a heat source such as a gas stove or an oven.
- If you are putting away the battery for more than three months, it is recommended that the battery should be fully charged, and get recharged every three months. If you store the device with an uncharged battery, it could fall into a deep worn-out state which would render it incapable of holding any charge. Be sure to store your the device and battery at the proper temperature (refer to [1.5 Specifications](#) on page 8).
- The battery consists of precise electrical components and cells. Do not drop or hit the battery.

General Cleaning Tips

You may need the following precautions before you begin to clean the device. When you clean any single part or component for the device, please thoroughly read and understand the details below.

1. We strongly recommended that you should shut down the system before you start to clean any single components.
2. When you need to clean the device, please rub it with a piece of dry cloth.
3. Be cautious of the tiny removable components when you use a vacuum cleaner to absorb the dirt on the floor.
4. Never drop the components inside the device or get circuit board damp or wet.
5. Be cautious of all kinds of cleaning solvents or chemicals when you use it for the sake of cleaning. Some individuals may be allergic to the ingredients.
6. Try not to put any food, drink or cigarette around the device.

Cleaning Tools

Although many companies have created products to help improve the process of cleaning your devices and peripherals, users can also use household items to clean their devices and peripherals. Below is a listing of items you may need or want to use while cleaning your devices or peripherals. Keep in mind that some components in your device may only be able to be cleaned using a product designed for cleaning that component, if this is the case it will be mentioned in the cleaning.

- **Cloth:** A piece of cloth is the best tool to use when rubbing up a component. Although paper towels or tissues can be used on most hardware as well, we still recommend you to rub it with a piece of cloth.
- **Water or rubbing alcohol:** You may moisten a piece of cloth a bit with some water or rubbing alcohol and rub it on the device. Unknown solvents may be harmful to the plastics parts.
- **Vacuum cleaner:** Absorb the dust, dirt, hair, cigarette particles, and other particles out of the device can be one of the best cleaning methods. Over time, these items can restrict the airflow in a device and cause circuitry to corrode.
- **Cotton swabs:** Cotton swaps moistened with rubbing alcohol or water are excellent tools for wiping hard to reach areas in your keyboard, mouse, and other locations.
- **Foam swabs:** Whenever possible, it is better to use lint-free swabs such as foam swabs.

- **ESD:** There has potential risk of static electricity accumulation when device work in hazardous environments. Please do not perform charging and discharging operations. This device can ground itself to release static electricity during the charging process, so please perform charging operations in a safe environment.

Recommended Cleaning Procedures

- Close all application programs
- Close operating software
- Turn off the equipment
- Remove all peripherals
- Disconnect the power cable
- Proceed to clean.

Disposing of the Equipment

- **Within the European Union**



EU-wide legislation, as implemented in each Member State, requires that waste electrical and electronic products carrying the mark (left) must be disposed of separately from normal household waste.

This includes monitors and electrical accessories, such as signal cables or power cords. When you need to dispose of your display products, please follow the guidance of your local authority, or ask the shop where you purchased the product, or if applicable, follow any agreements made between yourself. The mark on electrical and electronic products only applies to the current European Union Member States.

- **Outside the European Union**

If you wish to dispose of used electrical and electronic products outside the European Union, please contact your local authority so as to comply with the correct disposal method.

Additional Information & Technical Support

You can download the related technical documents such as datasheet and user's manual as well as driver on our website.

Please do not hesitate to call or e-mail our customer service when you still cannot get the information you need.

http://amobile-solutions.com/web_en/contact.php

E-mail: support@amobile.com.tw

Tel: 886 - 2 – 8226 - 8558

Address: 8F-1, No. 700, Zhongzheng Rd., Zhonghe Dist., New Taipei City 235, Taiwan

Company Name: AMobile Solutions Corp.

Warranty

This product is warranted to be in good working order during the warranty period. Should this product fail to be in good working order at any time during this period, we will, at our option, replace or repair it at no additional charge except as set forth in the following terms. This warranty does not apply to products damaged by misuse, modifications, accident or disaster.

Vendor assumes no liability for any damages, lost profits, lost savings or any other incidental or consequential damage resulting from the use, misuse of, or inability to use this product. Vendor will not be liable for any claim made by any other related party.

Vendors disclaim all other warranties, either expressed or implied, including but not limited to implied warranties of merchantability and fitness for a particular purpose, with respect to the hardware, the accompanying product's manual(s) and written materials, and any accompanying hardware. This limited warranty gives you specific legal rights.

Return authorization must be obtained from the vendor before returned merchandise will be accepted. Authorization can be obtained by calling or faxing the vendor and requesting a Return Merchandise Authorization (RMA) number. Returned goods should always be accompanied by a clear problem description. Safety Symbols

Special Conditions for safe Use:

1. The G60 Pro shall not be connected or disconnected from any external devices or interfaces and be replaced battery pack in explosive atmosphere.
2. The G60 Pro shall only be charged in the non-hazardous area with specified adapter from manufacturer. Charging should be at an ambient within the range of 0 to 45 degrees C.
3. The G60 Pro shall be powered by a certified power adapter which complies with ES1 according to IEC/EN 62368-1, with rating of 9V, 2A.

G60 Pro Specification:

Rating Voltage: D.C. 9V Rating Current: 2.0A Operating

Temp.: -10 ~ 50°C

Battery Capacity: 5100 mAh,

Normal Voltage: 3.8V

Caution:

1. Please Use the battery coming with G60 Pro device to avoid the risk of explosion.
2. Dispose of used batteries according to local government requirements.
3. Do not disassemble, open, short or destroy the battery.
4. Do not expose a battery or battery pack to heat or fire. Avoid storing under direct sunlight.
5. When a battery leaks, do not allow the liquid electrolyte to touch the skin or eyes.
If inadvertently touching, rinse the affected area with plenty of water and seek for medical assistance.
6. Be sure to use the right charger and follow the instruction of G60 Pro manual with the correct procedure to charge.
7. Do not expose the laser radiation to the eyes, so as not to hurt the eyes.
8. In an environment below 0 degrees, please be mindful of falls to prevent the external antenna from breaking.
9. When using G60 Pro in hazardous area, the equipment shall be protected from contamination by liquid and dust, i.e. pollution degree 2 or better. This is normally achieved by the operator carrying the device on their person.
10. Connection and disconnection of the all the external ports, opening enclosure, or replacing battery pack while live is only permitted if the potentially explosive atmosphere is shown to be absent.
11. The G60 Pro shall only be charged when in the non-hazardous area, using the adapter or cradle specifically supplied by the manufacturer for use with the unit. Charging shall be at an ambient temperature that is within the ambient range of the charger and not outside the range of the G60 Pro.
12. Do not open when an explosive atmosphere is present.

User Manual Table of Contents

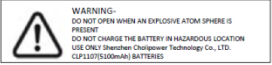
1 Packing Content.....	14
2 Device label Drawing.....	14
3 Accessory Drawing.....	15
4 G60 Pro Overview	16
5 Battery Installation	17
6 Hard Key Function.....	18
7 Charge & Data Transmission.....	19
8 Thermal Imaging Usage	22
9 Push-to-Talk of Analog / Digital Mode Usage.....	24

Packing Content:

- G60 Pro Industry Inspection Device
- Quick Start Guide
- Rechargeable Li-ion Polymer battery
- Power/ Data sync USB Carrier
- Product Label Artwork Information:
- Rechargeable Li-ion Polymer Battery Information:

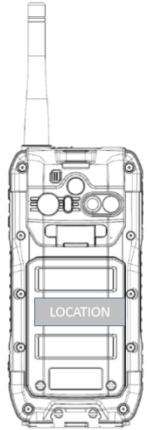
Device Label Artwork

ITEM	DATE	REMARK	DESIGNED	APPROVED
1	6/25/24	Initial	Jason	Perry
2	6/26/24	Remove tooth	Jason	Perry
3	6/30/24	Modify warning text	Jason	Perry




50mm

1.3mm




TOLERANCE TABLE				MATERIAL	PART NO.		
CLASS/mm	A	B	C	SPK	DRAW NO.	APPROVED	DESIGNED
0.1 < x ≤ 0.5	0.05	0.05	0.1	DATA	24.01.05	CHECKED	DESIGNED
0.5 < x ≤ 1.0	0.08	0.15	0.2	UNIT: mm			
1.0 < x ≤ 2.0	0.1	0.2	0.3	SCALE: 1:1			
2.0 < x ≤ 5.0	0.15	0.3	0.5				

* The component should be comply with the prohibit of hazardous substances in the RoHS and REACH Directive



MODEL: G60PRO
REV: V1.1 SHEET: 1/1

A				B				C				D				E				F				G				H				A4			
ITEM		DATE		REMARK		DESIGNED		APPROVED																											
1		6/21/24		initial		Jen-Chieh		Perry																											
2		1/16/24		Modify recovery address		Jen-Chieh		Perry																											
3		6/26/24		Modify ATX Number		Jen-Chieh		Perry																											



Model: G60 Pro
Industry Inspection Device

CE Ex II 3G Ex ic IIC T5 Gc
TPS 24 ATEX 105130 0005 X

8F-1, No. 700, Zhongzheng Rd., Zhonghe Dist., New Taipei City 235, Taiwan

AMobile Solutions Corp.
Made in Taiwan

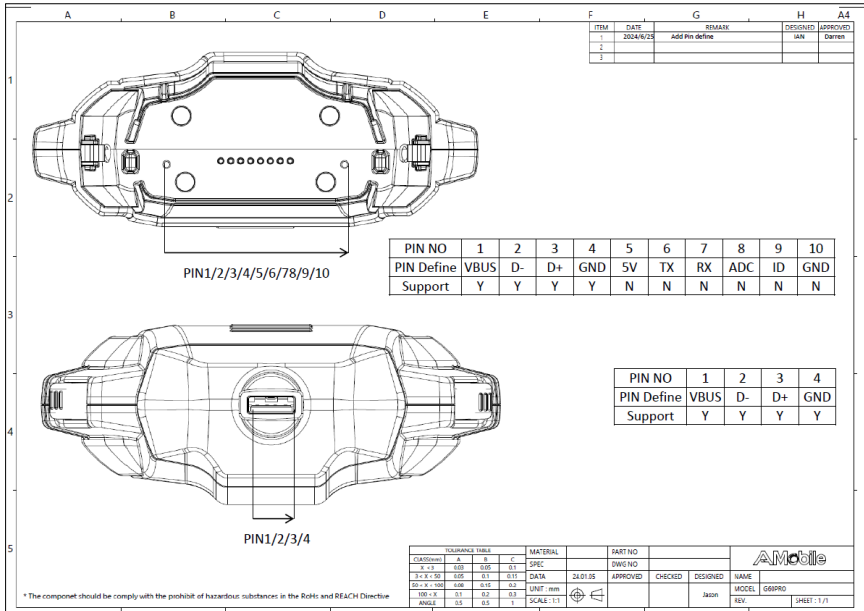
Label Dimension & Material

- Part Number: 423900000000M
- Part Specification: 啞銀龍, 銀色, 42.5*27mm

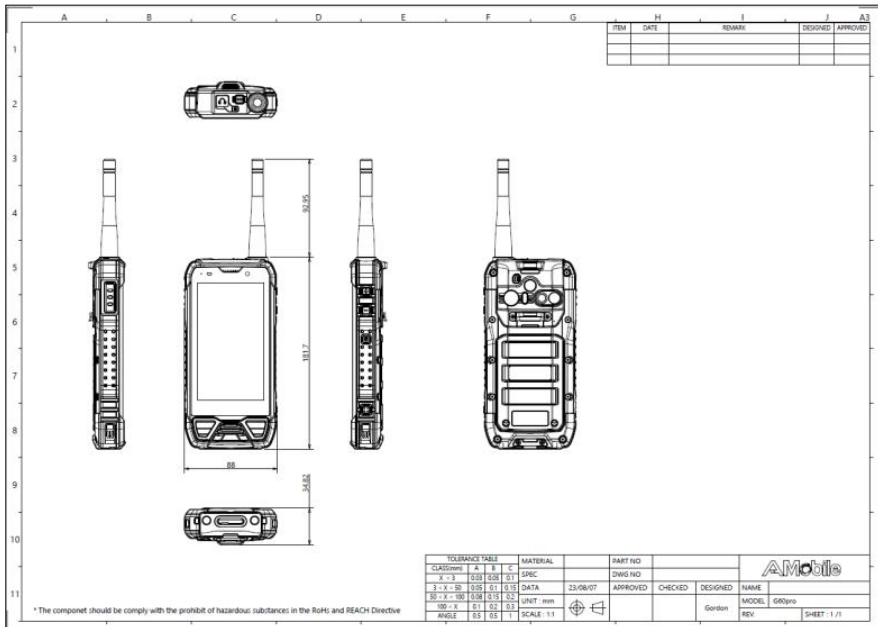
Texture:

- Model: G60 Pro
- Device Type: Industry Inspection Device
- Manufacturer: **AMobile** Solutions Corp.
- Origin: Made in Taiwan
- Safety Regulation Icon: CE/ ATEX Zone II/ Recycle

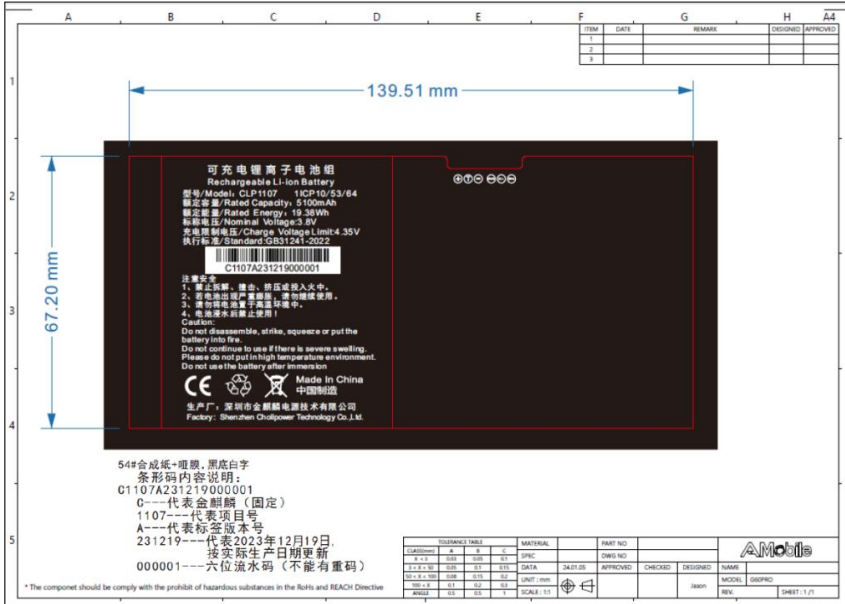
TOLERANCE TABLE				MATERIAL		PART NO.		AMOBILE	
CLASS	A	B	C	D	SPC	DWG NO.	APPROVED	CHECKED	DESIGNED
1	±0.1	±0.05	±0.02	±0.01	DATA	34.01.05			
2	±0.15	±0.08	±0.03	±0.01	DATA				
3	±0.2	±0.1	±0.04	±0.02	DATA				
4	±0.3	±0.15	±0.05	±0.03	DATA				
5	±0.4	±0.2	±0.06	±0.04	DATA				
6	±0.5	±0.25	±0.08	±0.05	DATA				
7	±0.6	±0.3	±0.1	±0.06	DATA				
8	±0.8	±0.4	±0.12	±0.08	DATA				
9	±1.0	±0.5	±0.15	±0.1	DATA				
10	±1.2	±0.6	±0.18	±0.12	DATA				
11	±1.5	±0.8	±0.2	±0.15	DATA				
12	±2.0	±1.0	±0.25	±0.2	DATA				
13	±2.5	±1.2	±0.3	±0.25	DATA				
14	±3.0	±1.5	±0.35	±0.3	DATA				
15	±4.0	±2.0	±0.45	±0.4	DATA				
16	±5.0	±2.5	±0.6	±0.5	DATA				
17	±6.0	±3.0	±0.8	±0.6	DATA				
18	±8.0	±4.0	±1.0	±0.8	DATA				
19	±10.0	±5.0	±1.2	±1.0	DATA				
20	±12.0	±6.0	±1.5	±1.2	DATA				
21	±15.0	±7.5	±1.8	±1.5	DATA				
22	±20.0	±10.0	±2.0	±1.8	DATA				
23	±25.0	±12.5	±2.5	±2.0	DATA				
24	±30.0	±15.0	±3.0	±2.5	DATA				
25	±40.0	±20.0	±4.0	±3.0	DATA				
26	±50.0	±25.0	±5.0	±4.0	DATA				
27	±60.0	±30.0	±6.0	±5.0	DATA				
28	±80.0	±40.0	±8.0	±6.0	DATA				
29	±100.0	±50.0	±10.0	±8.0	DATA				
30	±120.0	±60.0	±12.0	±10.0	DATA				
31	±150.0	±75.0	±15.0	±12.0	DATA				
32	±200.0	±100.0	±20.0	±16.0	DATA				
33	±250.0	±125.0	±25.0	±20.0	DATA				
34	±300.0	±150.0	±30.0	±24.0	DATA				
35	±400.0	±200.0	±40.0	±32.0	DATA				
36	±500.0	±250.0	±50.0	±40.0	DATA				
37	±600.0	±300.0	±60.0	±48.0	DATA				
38	±800.0	±400.0	±80.0	±64.0	DATA				
39	±1000.0	±500.0	±100.0	±80.0	DATA				
40	±1200.0	±600.0	±120.0	±96.0	DATA				
41	±1500.0	±750.0	±150.0	±120.0	DATA				
42	±2000.0	±1000.0	±200.0	±160.0	DATA				
43	±2500.0	±1250.0	±250.0	±200.0	DATA				
44	±3000.0	±1500.0	±300.0	±240.0	DATA				
45	±4000.0	±2000.0	±400.0	±320.0	DATA				
46	±5000.0	±2500.0	±500.0	±400.0	DATA				
47	±6000.0	±3000.0	±600.0	±480.0	DATA				
48	±8000.0	±4000.0	±800.0	±640.0	DATA				
49	±10000.0	±5000.0	±1000.0	±800.0	DATA				
50	±12000.0	±6000.0	±1200.0	±960.0	DATA				
51	±15000.0	±7500.0	±1500.0	±1200.0	DATA				
52	±20000.0	±10000.0	±2000.0	±1600.0	DATA				
53	±25000.0	±12500.0	±2500.0	±2000.0	DATA				
54	±30000.0	±15000.0	±3000.0	±2400.0	DATA				
55	±40000.0	±20000.0	±4000.0	±3200.0	DATA				
56	±50000.0	±25000.0	±5000.0	±4000.0	DATA				
57	±60000.0	±30000.0	±6000.0	±4800.0	DATA				
58	±80000.0	±40000.0	±8000.0	±6400.0	DATA				
59	±100000.0	±50000.0	±10000.0	±8000.0	DATA				
60	±120000.0	±60000.0	±12000.0	±9600.0	DATA				
61	±150000.0	±75000.0	±15000.0	±12000.0	DATA				
62	±200000.0	±100000.0	±20000.0	±16000.0	DATA				
63	±250000.0	±125000.0	±25000.0	±20000.0	DATA				
64	±300000.0	±150000.0	±30000.0	±24000.0	DATA				
65	±400000.0	±200000.0	±40000.0	±32000.0	DATA				
66	±500000.0	±250000.0	±50000.0	±40000.0	DATA				
67	±600000.0	±300000.0	±60000.0	±48000.0	DATA				
68	±800000.0	±400000.0	±80000.0	±64000.0	DATA				
69	±1000000.0	±500000.0	±100000.0	±80000.0	DATA				
70	±1200000.0	±600000.0	±120000.0	±96000.0	DATA				
71	±1500000.0	±750000.0	±150000.0	±120000.0	DATA				
72	±2000000.0	±1000000.0	±200000.0	±160000.0	DATA				
73	±2500000.0	±1250000.0	±250000.0	±200000.0	DATA				
74	±3000000.0	±1500000.0	±300000.0	±240000.0	DATA				
75	±4000000.0	±2000000.0	±400000.0	±320000.0	DATA				
76	±5000000.0	±2500000.0	±500000.0	±400000.0	DATA				
77	±6000000.0	±3000000.0	±600000.0	±480000.0	DATA				
78	±8000000.0	±4000000.0	±800000.0	±640000.0	DATA				
79	±10000000.0	±5000000.0	±1000000.0	±800000.0	DATA				
80	±12000000.0	±6000000.0	±1200000.0	±960000.0	DATA				
81	±15000000.0	±7500000.0	±1500000.0	±1200000.0	DATA				
82	±20000000.0	±10000000.0	±2000000.0	±1600000.0	DATA				
83	±25000000.0	±12500000.0	±2500000.0	±2000000.0	DATA				
84	±30000000.0	±15000000.0	±3000000.0	±2400000.0	DATA				
85	±40000000.0	±20000000.0	±4000000.0	±3200000.0	DATA				
86	±50000000.0	±25000000.0	±5000000.0	±4000000.0	DATA				
87	±60000000.0	±30000000.0	±6000000.0	±4800000.0	DATA				
88	±80000000.0	±40000000.0	±8000000.0	±6400000.0	DATA				
89	±100000000.0	±50000000.0	±10000000.0	±8000000.0	DATA				
90	±120000000.0	±60000000.0	±12000000.0	±9600000.0	DATA				
91	±150000000.0	±75000000.0	±15000000.0	±12000000.0	DATA				
92	±200000000.0	±100000000.0	±20000000.0	±16000000.0	DATA				
93	±250000000.0	±125000000.0	±25000000.0	±20000000.0	DATA				
94	±300000000.0	±150000000.0	±30000000.0	±24000000.0	DATA				
95	±400000000.0	±200000000.0	±40000000.0	±32000000.0	DATA				
96	±500000000.0	±250000000.0	±50000000.0	±40000000.0	DATA				
97	±600000000.0	±300000000.0	±60000000.0	±48000000.0	DATA				
98	±800000000.0	±400000000.0	±80000000.0	±64000000.0	DATA				
99	±1000000000.0	±500000000.0	±100000000.0	±80000000.0	DATA				
100	±1200000000.0	±600000000.0	±120000000.0	±96000000.0	DATA				
101	±1500000000.0	±750000000.0	±150000000.0	±120000000.0	DATA				
102	±2000000000.0	±1000000000.0	±200000000.0	±160000000.0	DATA				
103	±2500000000.0	±1250000000.0	±250000000.0	±200000000.0	DATA				
104	±3000000000.0	±1500000000.0	±300000000.0	±240000000.0	DATA				
105	±4000000000.0	±2000000000.0	±400000000.0	±320000000.0	DATA				
106	±5000000000.0	±2500000000.0	±500000000.0	±400000000.0	DATA				
107	±6000000000.0	±3000000000.0	±600000000.0	±480000000.0	DATA				
108	±8000000000.0	±4000000000.0	±800000000.0	±640000000.0	DATA				
109	±10000000000.0	±5000000000.0	±1000000000.0	±800000000.0	DATA				
110	±12000000000.0	±6000000000.0	±1200000000.0	±960000000.0	DATA				
111	±15000000000.0	±7500000000.0	±1500000000.0	±1200000000.0	DATA				
112	±20000000000.0	±10000000000.0	±2000000000.0	±1600000000.0	DATA				
113	±25000000000.0	±12500000000.0	±2500000000.0	±2000000000.0	DATA				



G60 Pro Overview



Battery Installation



G60 Pro Overview

Product Introduction

The G60 Pro is a versatile device designed for harsh environments and has ATEX Zone 2 certification for safe use in hazardous areas. It integrates an infrared thermal imaging camera for preventative maintenance and is equipped with a variety of wireless communication technologies, including 4G LTE, Wi-Fi, and Bluetooth, providing a seamless communication channel and improving work efficiency. With an ergonomic design, the G60 Pro is lightweight and easy to carry, and can meet the demands of harsh environments. In addition, it is equipped with emergency SOS buttons, PTT intercom function, etc., which can provide rapid response and prevention capabilities in case of emergency. Overall, the G60 Pro is a rugged and powerful Industry Inspection Device for high-hazard environments such as chemical and oil and gas, which can greatly improve productivity and safety.

Hard Key Function



Item#	Item Name	Item#	Item Name
1	Push-to-Talk Key	12	Volume Key
2	SOS Key	13	Power Key
3	PTT antenna	14	Camera Key
4	Speaker & PTT microphone	15	Hook holder
5	Front Camera	16	Rear Camera
6	Customizable Key1	17	Laser Pointer
7	Record	18	Thermal Camera
8	Customizable Key2	19	Strap hanger (Optional)
9	Upload Key	20	Expansion slot (Optional)
10	Microphone & PTT speaker	21	NFC reader
11	USB Interface Pogo pin	22	Quick release screw

Battery Installation

Step 1:

Put the battery back to the slot and make it fixed.



Step 2:

Put the cover back and make sure that it is closed.



Step 3:

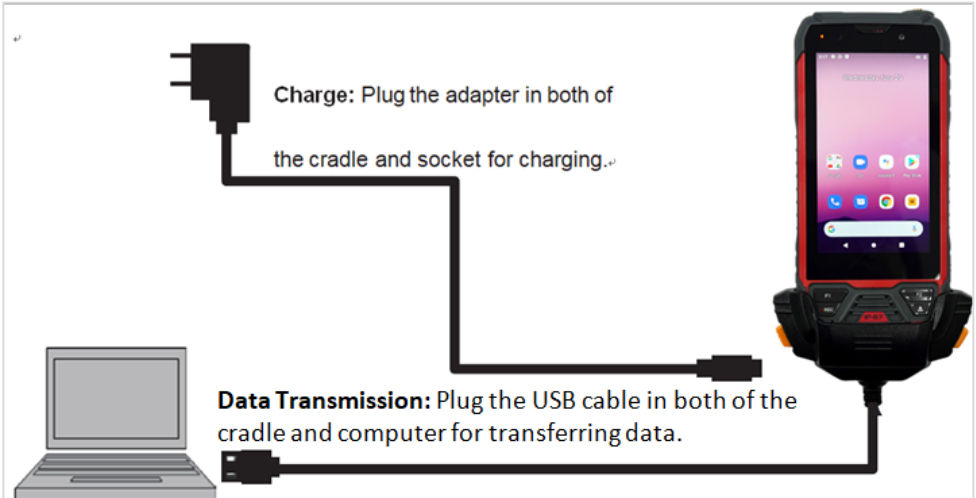
Use screwdriver to tighten the two screws to ensure the waterproof performance.



Charge & Data Transmission

To Charge G60 Pro, utilize desktop cradle with adapter. For data transfer, utilize both desktop and USB cable for transferring data.

During the charging process, static electricity will be released simultaneously through the ground pin of USB interface. Please ensure that the USB cable is properly connected to the G60 Pro.



1. Please make sure that the device and cradle are clean without stained with grease to charge successfully.



2. Please insert the device smoothly into the cradle slot from right direction.



The red area on the screen as shown displays the status during charging as well.

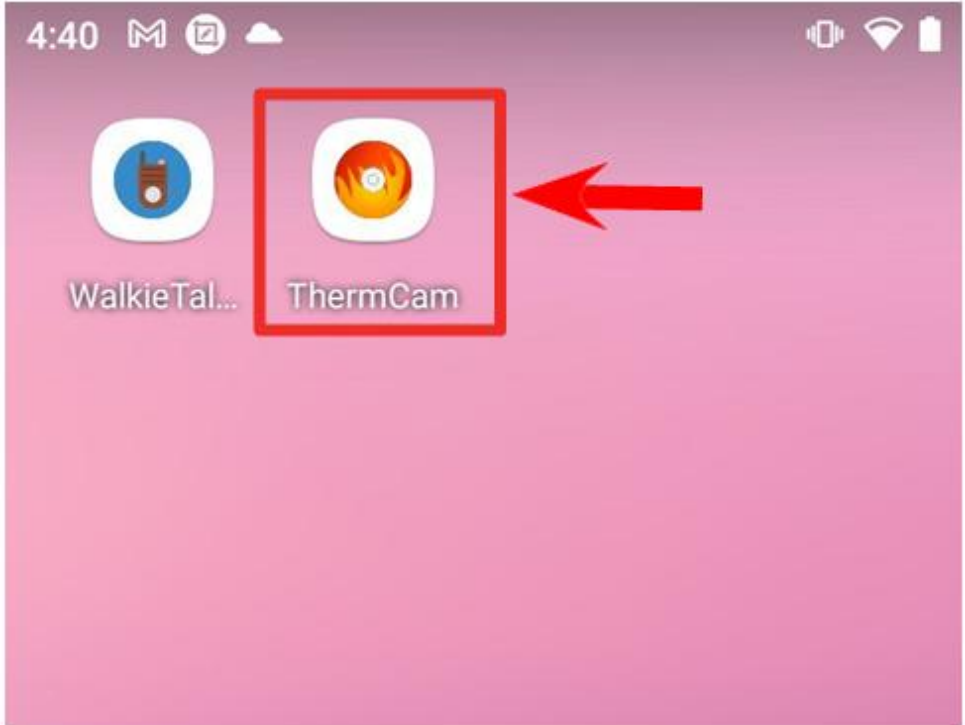


Warning: Use only the power adapter that comes with your device. Using a different power adapter may damage your device and may result in poor performance. It may also invalidate warranty applying to the device.

Thermal Imaging Usage

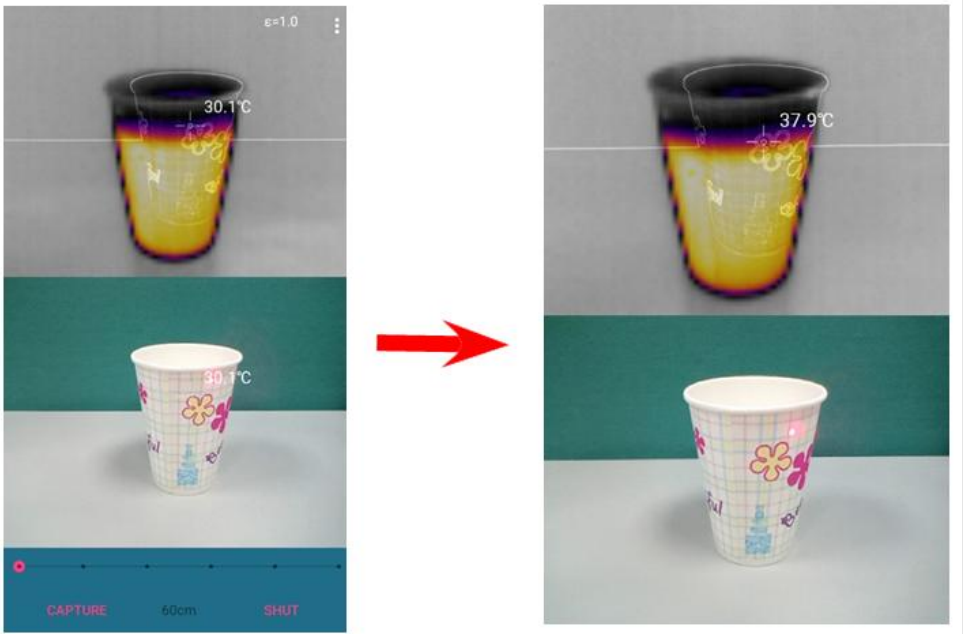
Step1:

Touch the App of "Thermal"



Step 2:

Touch the "Start" for referring the temperature of the object being observed



Step 3:

Touch the "Stop" when finishing

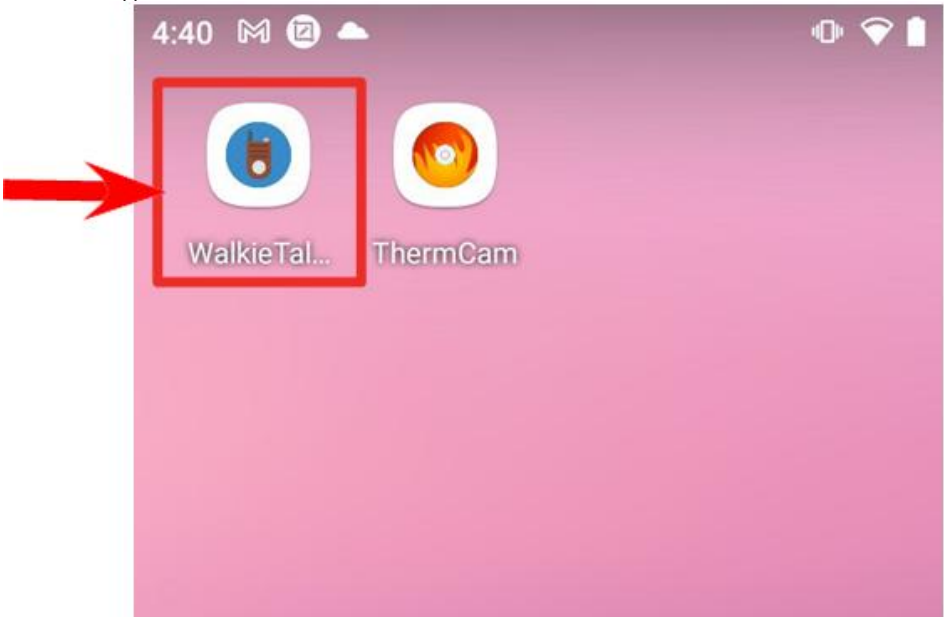
Remark:

1. The file storage location for Snapshot at file manager/phone storage/pictures
2. Do not touch the buttons of "SET" or "Cali"

Push-to-Talk of Analog Mode Usage

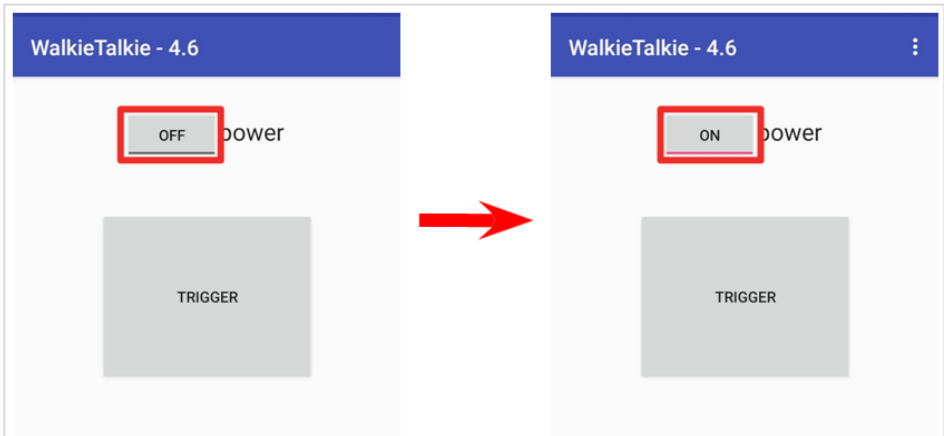
Step 1:

Touch the App of "WalkieTalkie"



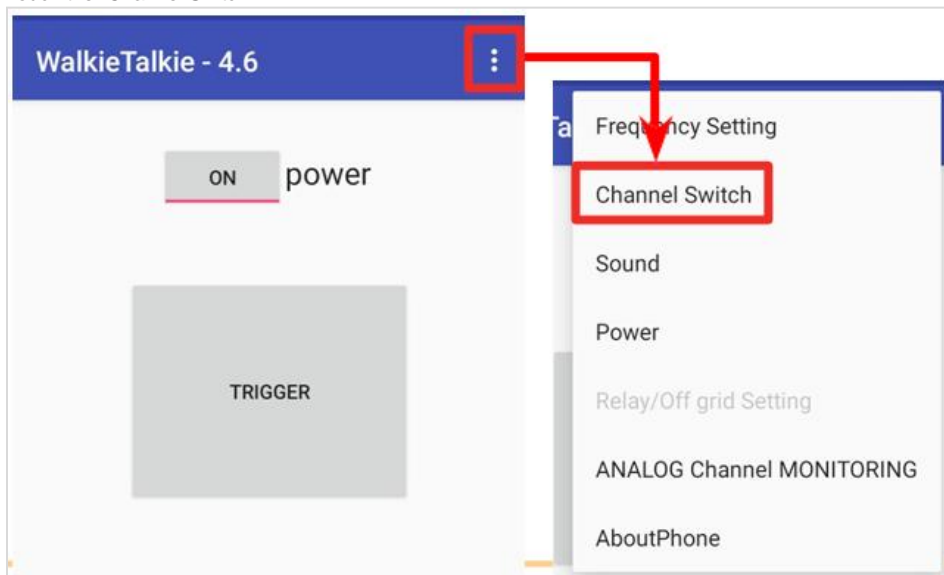
Step 2:

Touch the "OFF" to turn into "ON"



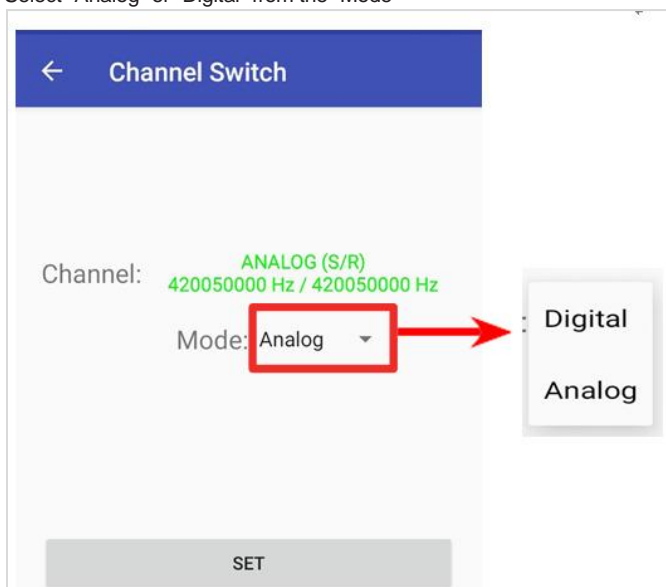
Step 3:

Touch the "Channel Switch"



Step 4:

Select "Analog" or "Digital" from the "Mode"



Step 5:

Select the channel frequency which must be same as the party's device you would like talk

The screenshot shows a mobile application interface titled "Channel Switch". At the top, there is a blue header bar with a white back arrow icon and the text "Channel Switch". Below the header, the text "Channel:" is followed by "ANALOG (S/R)" in green, and "420050000 Hz / 420050000 Hz" in green. Below this, the text "Mode: Digital" is followed by a downward-pointing triangle icon. At the bottom of the screen, there is a grey button labeled "SET".

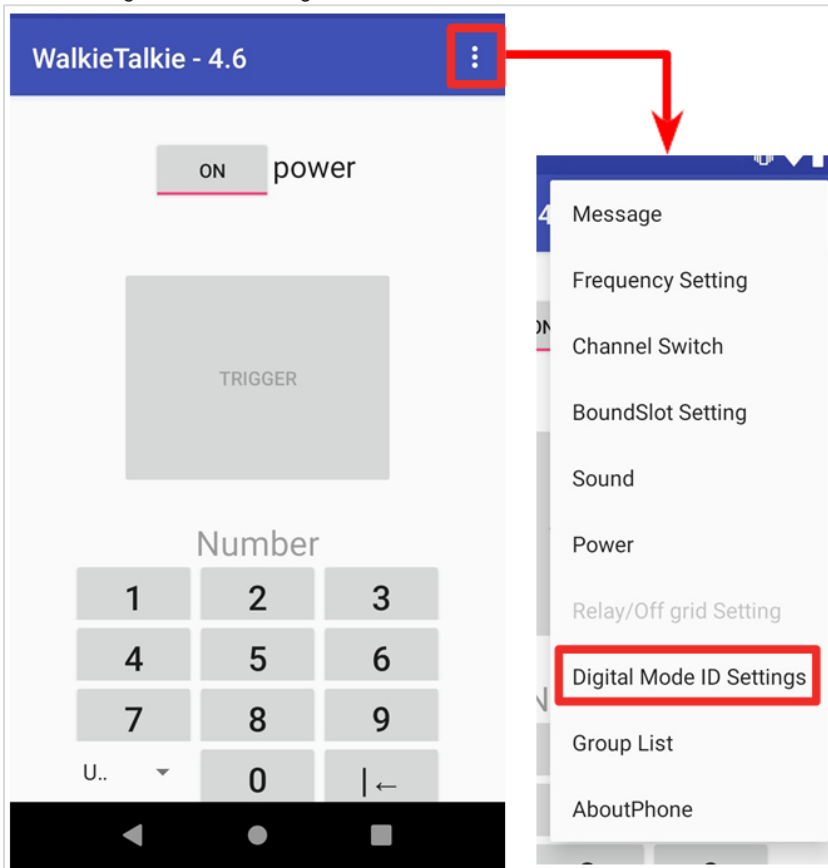
Step 6:

Touch the "SET" to finish and to go back

This screenshot is identical to the one in Step 5, but with red annotations. A red box highlights the back arrow icon in the top blue header bar, with a red "2." next to it. Another red box highlights the "SET" button at the bottom of the screen, with a red "1." next to it.

Step 7:

Touch the "Digital Mode ID Settings"



Step 8:

(a) For group talking, select an ID (from 1 to 32), and key in any 3 digit numbers and press the "SET" to finish setting.

← Digital Mode ID Settings

Select an ID
(from 1 to 32).

Phone number: 999

Color code: 1

SET

Key in any 3
digit numbers.

(b) For point-to-point talking, please key in any 3 digit numbers next to the "Phone number" and press the "SET" to finish setting.

(c) For encryption, you can key-in 1 digit number next to the "Color code" and press the "SET" to finish setting. The party to talk must have the same color code as yours.

← Digital Mode ID Settings

Phone number: 999

Color code: 1

SET

key in any 3
digit number.

key-in 1 digit
number.

← Digital Mode ID Settings

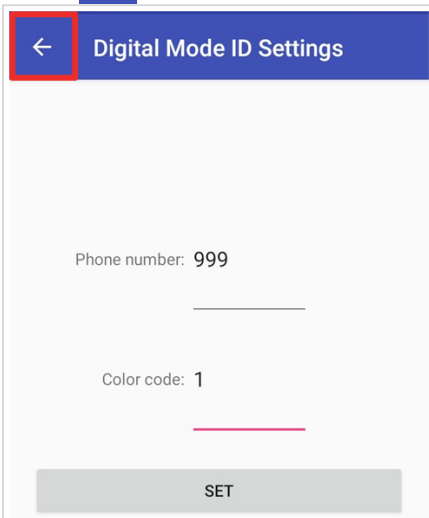
Phone number: 999

Color code: 1

SET

Step 9:

Touch  to go back



← Digital Mode ID Settings

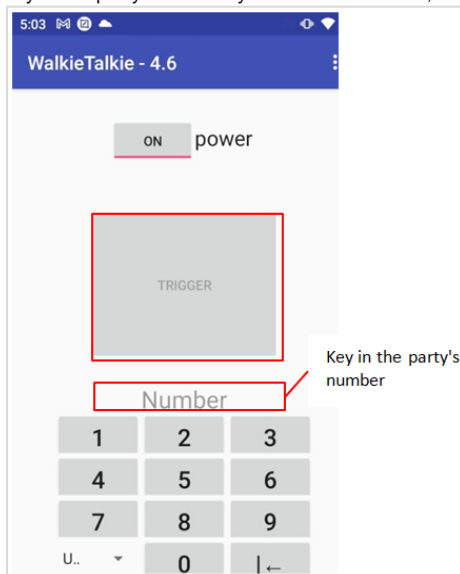
Phone number: 999

Color code: 1

SET

Step 10:

Key in the party's number you would like to talk, and long press the "TRIGGER" for talking



5:03 [icons]

WalkieTalkie - 4.6

ON power

TRIGGER

Key in the party's number

Number

1	2	3
4	5	6
7	8	9
U..	0	←



Remark:

The Push-to-Talk Key on the left side can also be used for talking.

