

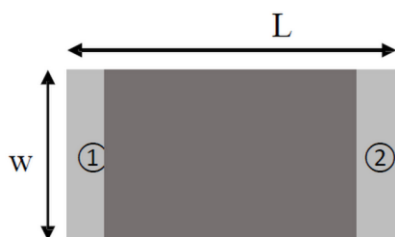
● Features

1. Surface Mounted Devices with a small dimension of 1.6 x 0.8 x 0.8mm meet future miniaturization trend.
2. Embedded and LTCC (low temperature co-fired ceramic) technology is able to integrate with system design as well as beatifying the housing of final product.
3. High stability and low tolerance.

● Applications

1. Bluetooth and Wireless LAN
2. ISM 2.4GHz in smart phone
3. PDA and other handheld devices.
4. ISM band 2.4GHz applications

● Dimensions (Unit: mm)



(Top View)



(Bottom View)

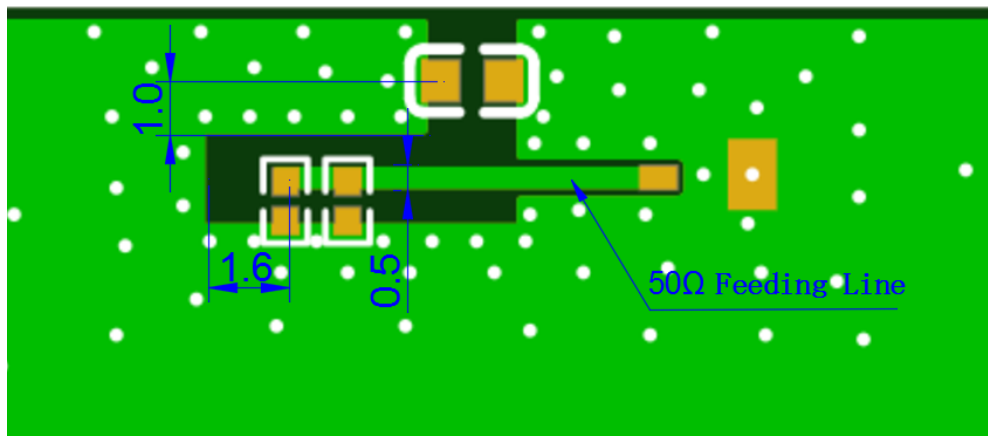
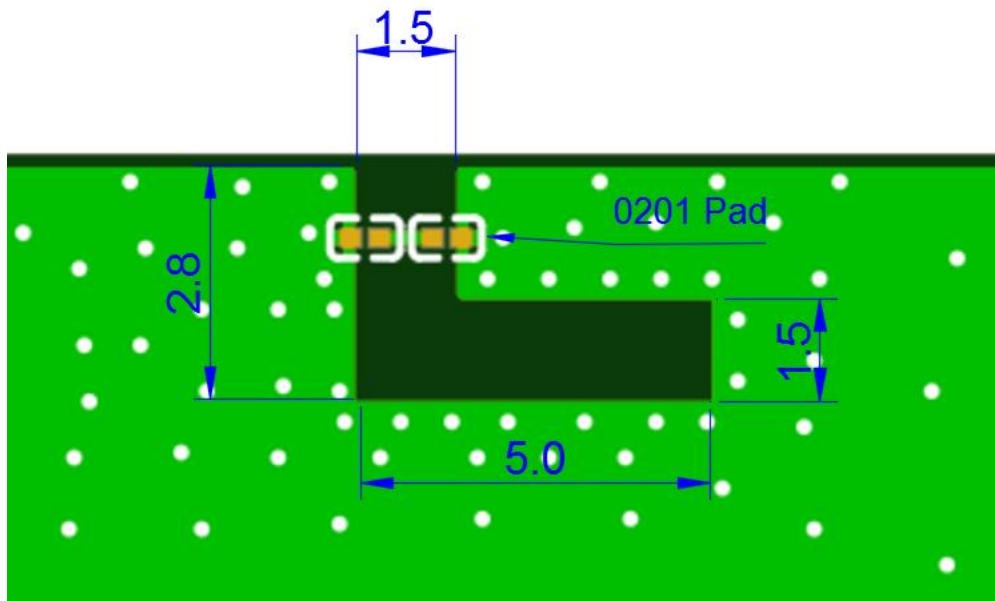
Number	Terminal Name
①	INPUT
②	NC



(Side View)

Symbols	L	W	T	A
Dimensions	1.60±0.20	0.80±0.20	0.80±0.10	0.30±0.10

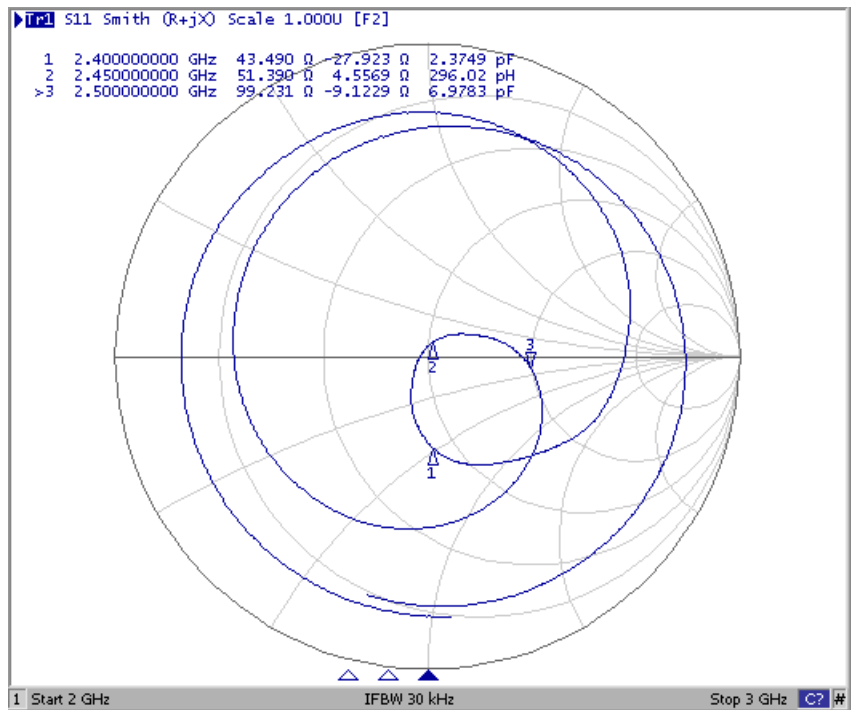
- Evaluation Board and Matching Circuits



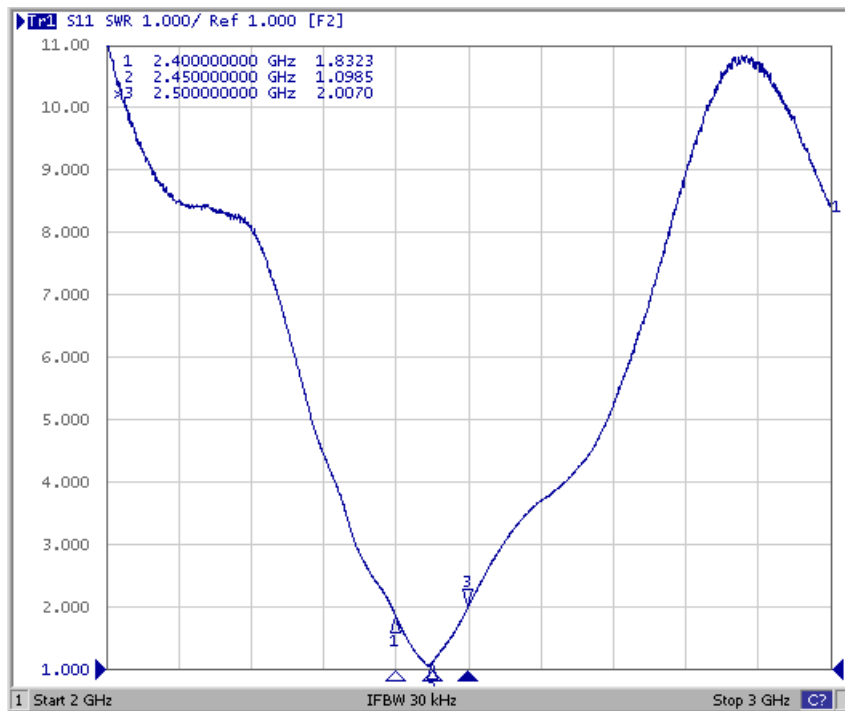
● Electrical Characteristics

Item	Feature	Specification
1	Central frequency	2445MHz
2	Bandwidth	>100MHz
3	Peak gain	2.6dBi
4	VSWR	<2
5	Polarization	Linear
6	Azimuth beamwidth	Omnidirectional
7	Impedance	50 Ω
NOTE: The specification is defined based on the test board dimension.		

(1) Smith Chart

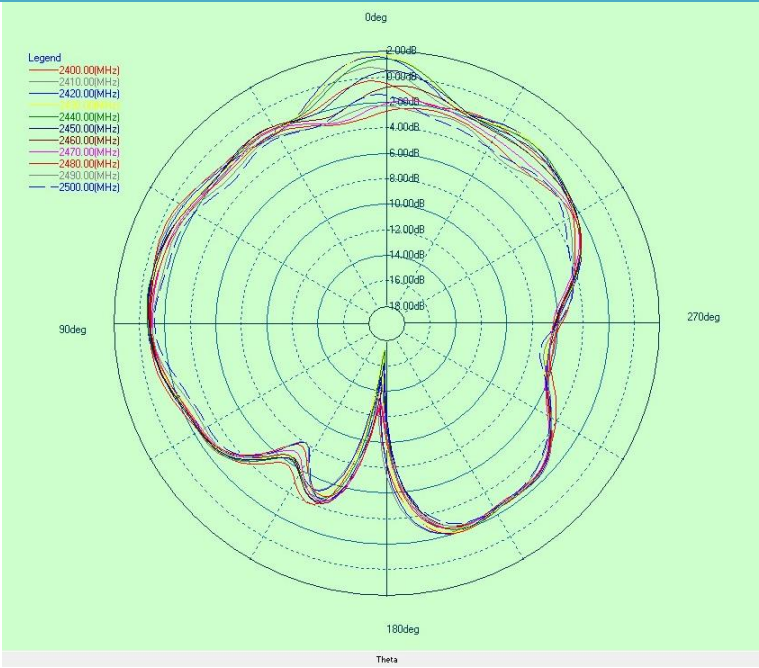


(2) S-Parameter

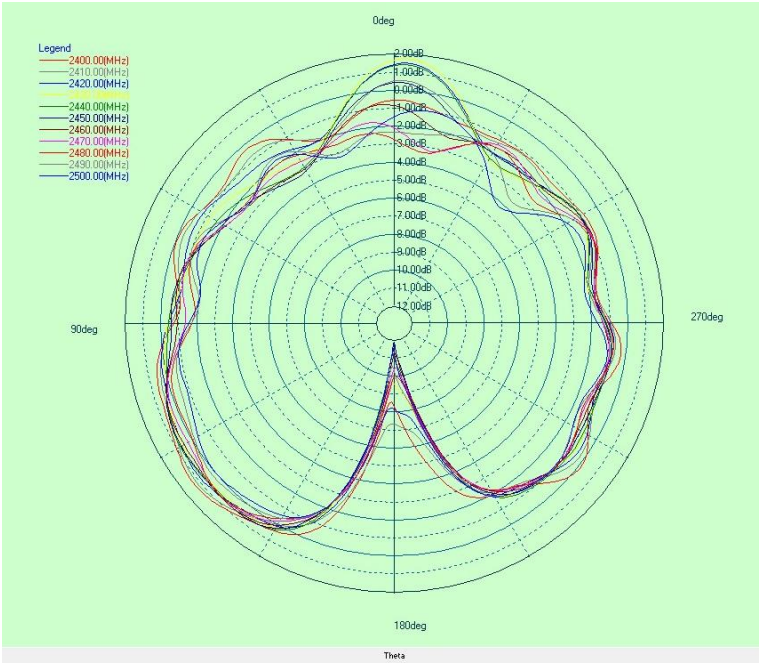


(3) Radiation Pattern

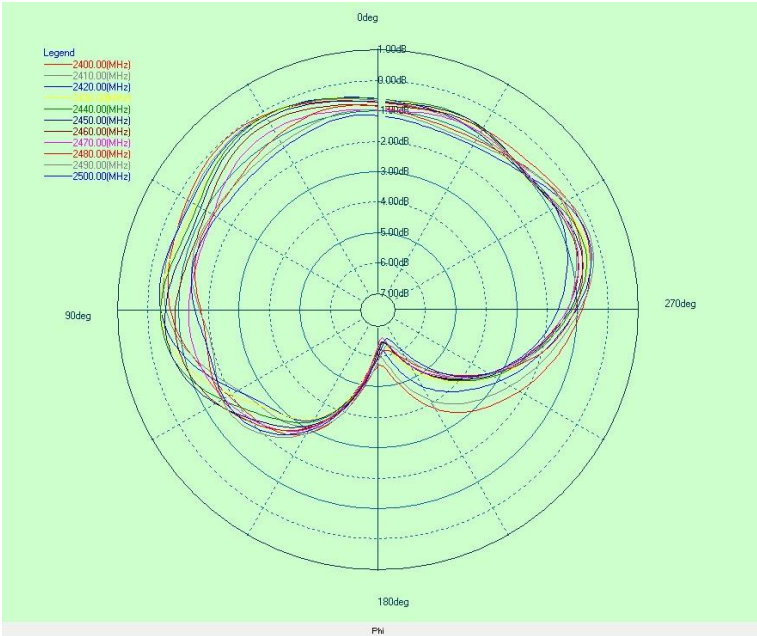




Y-Z Plane



X-Z Plane



X-Y Plane

Frequency	2400MHz	2450MHz	2490MHz
Avg. gain	1.20	0.90	0.35
Peak gain	2.6	2.6	2.4
Efficiency	62%	55%	52%

● Dependability Test

Test Temperature	25℃±3℃
Operating Temperature	-25℃~+85℃
Temperature	5~+40℃
Relative Humidity	20~70%HR

Shenzhen KTC Commercial Display Technology CO.,LTD.
No.4023, Northern Wuhe Road, Bantian Street, Longgang District,Shenzhen City, Guangdong Province, China