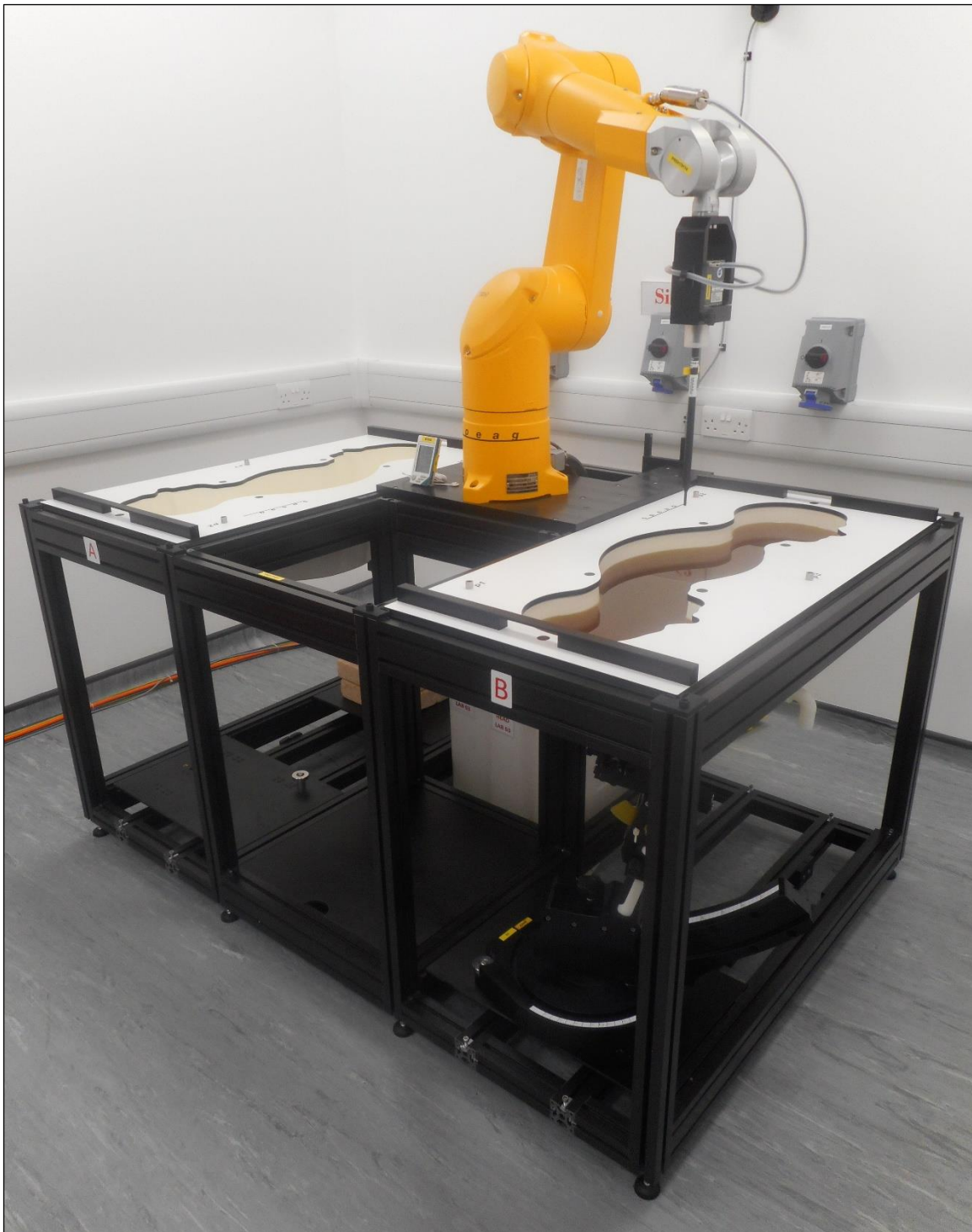


## **12. Appendixes**

### **12.1. Photos and Ports Location**

<b>Photo Reference Number</b>	<b>Title</b>
PHT/001	Test configuration for the measurement of SAR Lab
PHT/002	Edge1 of the EUT Facing Phantom at 0mm - View 1
PHT/003	Edge1 of the EUT Facing Phantom at 0mm - View 2
PHT/004	Left Side View of the EUT
PHT/005	Right Side View of EUT
PHT/006	Rear View of EUT
PHT/007	Label View of EUT
PHT/008	Graphical View of EUT
PHT/009	Antenna to Edge Separation Distances - View 1
PHT/010	Antenna to Edge Separation Distances - View 2

## PHT/001: Test configuration for the measurement of SAR Lab



## PHT/002: Edge1 of the EUT Facing Phantom at 0mm - View 1





PHT/003: Edge1 of the EUT Facing Phantom at 0mm - View 2

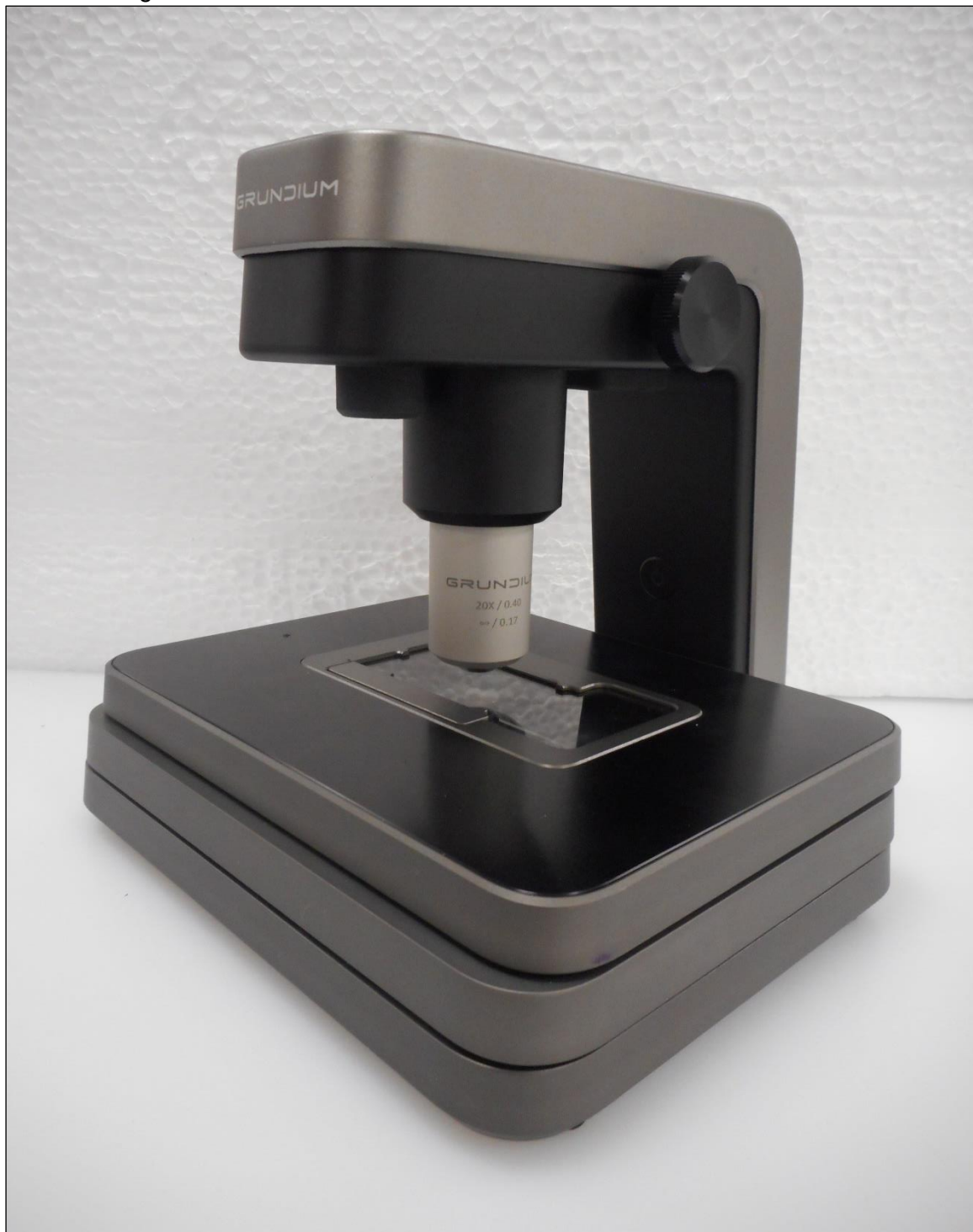


## PHT/004: Left Side View (Edge 1) of the EUT



**Note:** Edge 1 is modified to remove the know, to configure the EUT in close contact with the Eli Phantom at 0mm separation distance.

PHT/005: Right Side View of EUT





## PHT/006: Rear View of EUT

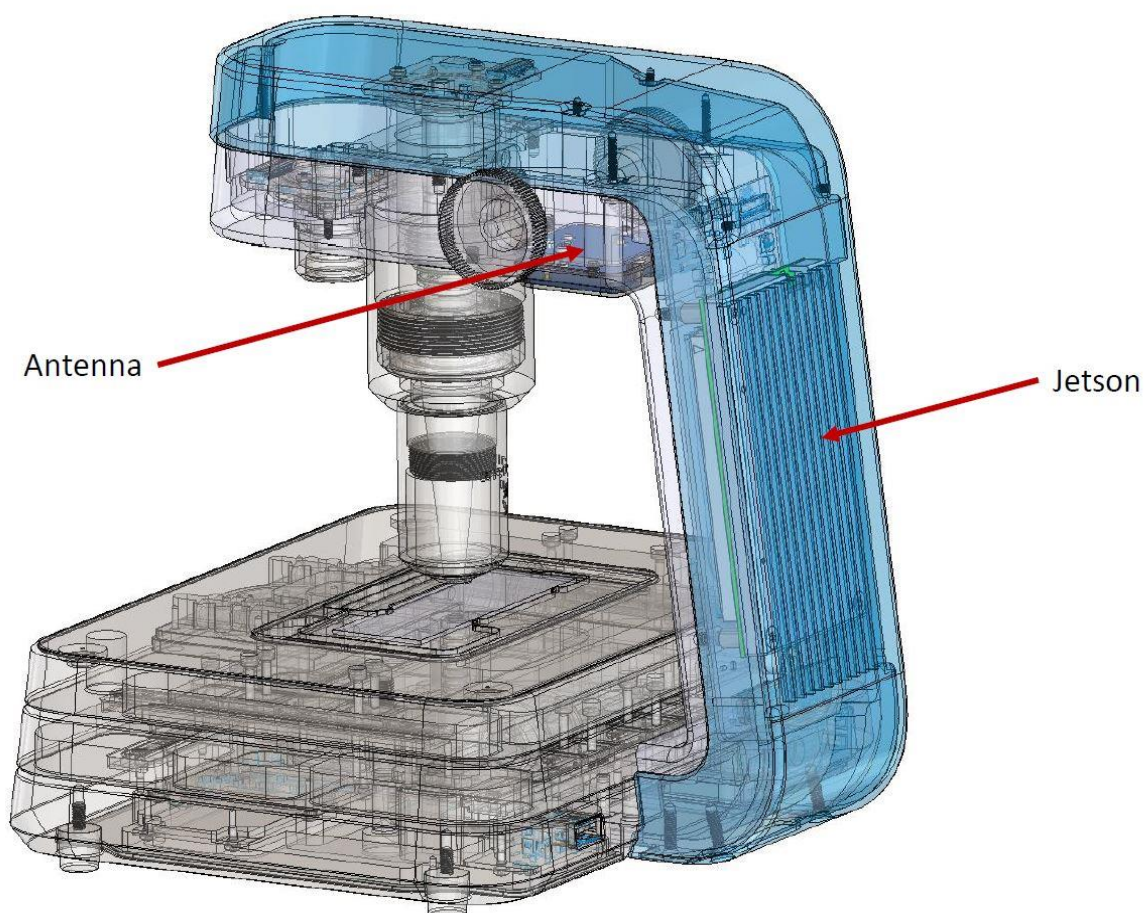


PHT/007: Label View of EUT

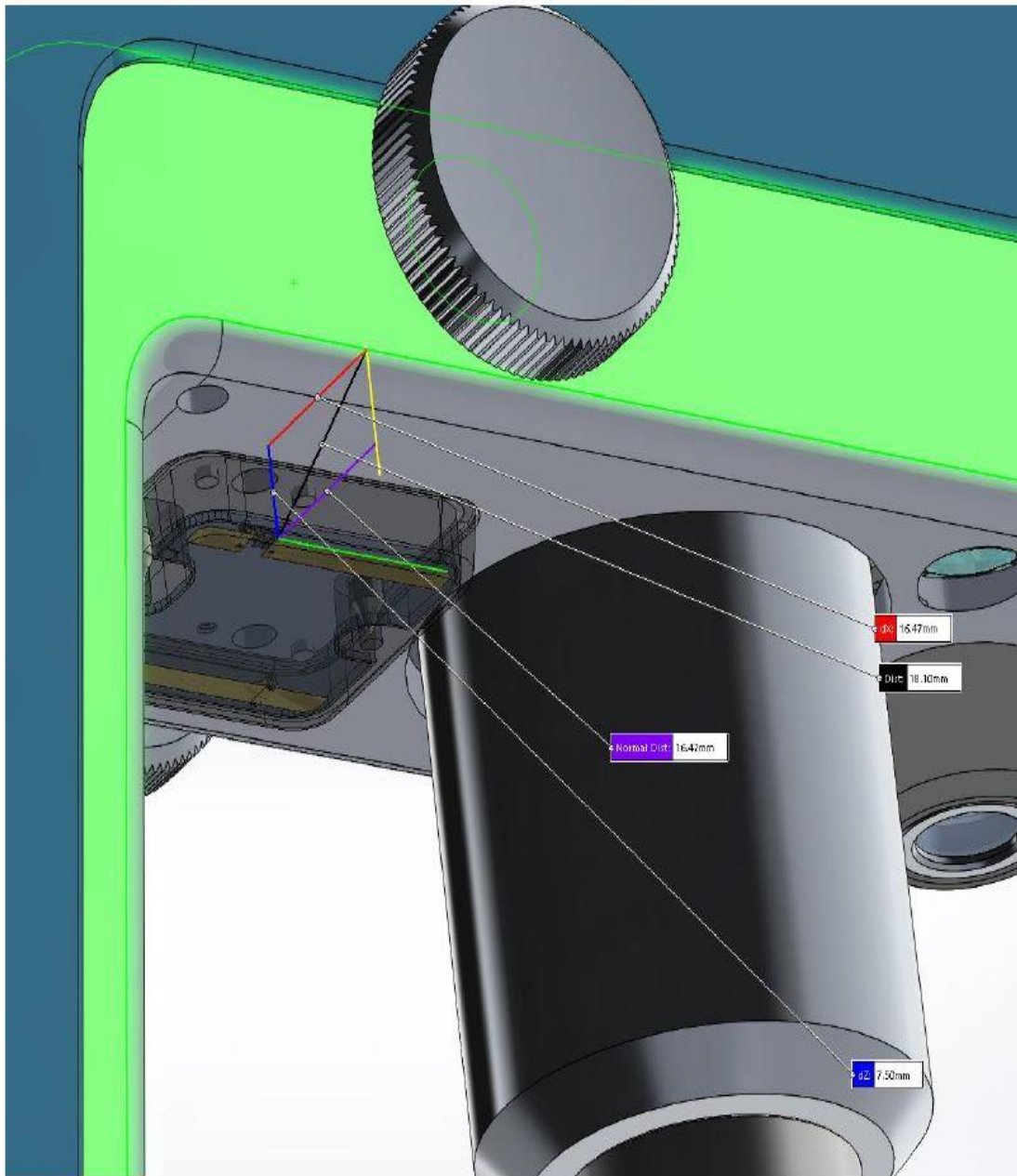




## PHT/008: Graphical View of EUT

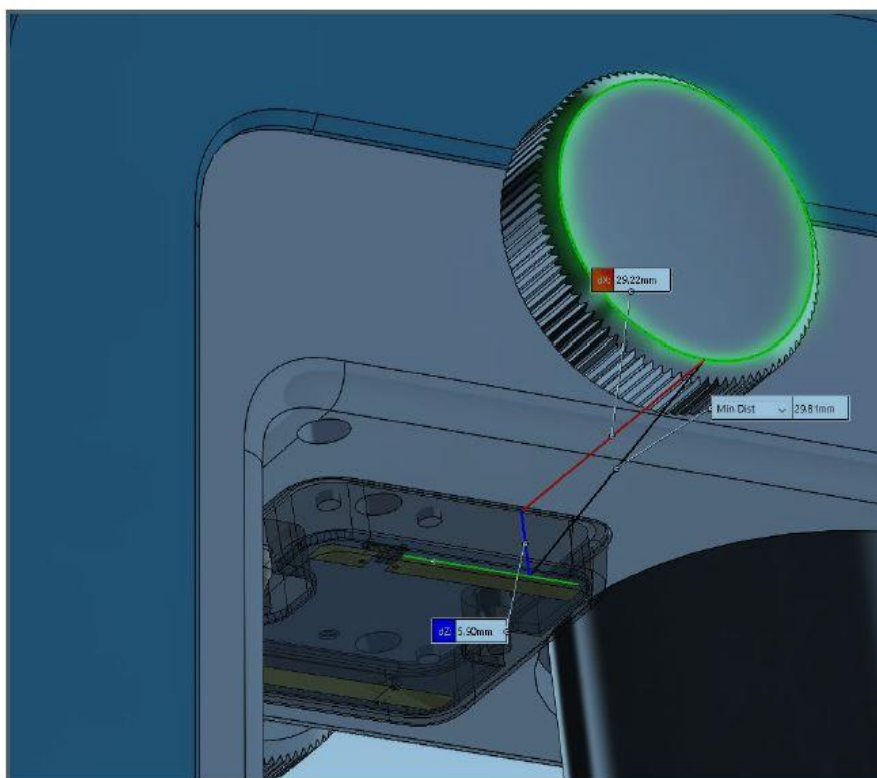


## PHT/009: Antenna to Edge Separation Distances - View 1

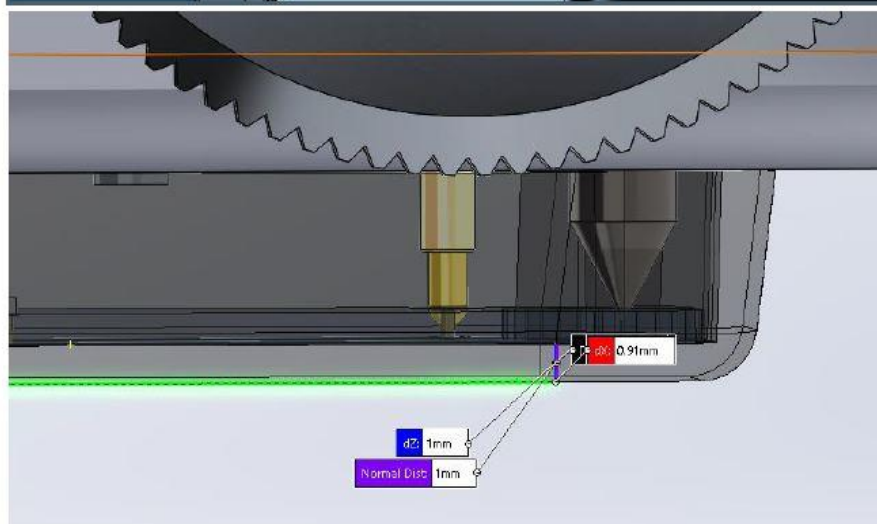


Minimum distance to left side of the arm is 16mm (fingertips closest location for left handed people). For the right side, the corresponding distance is 38mm.

## PHT/010: Antenna to Edge Separation Distances - View 2



Distance to outer edge of knob is about 29mm



Thickness of antenna cover is 1mm