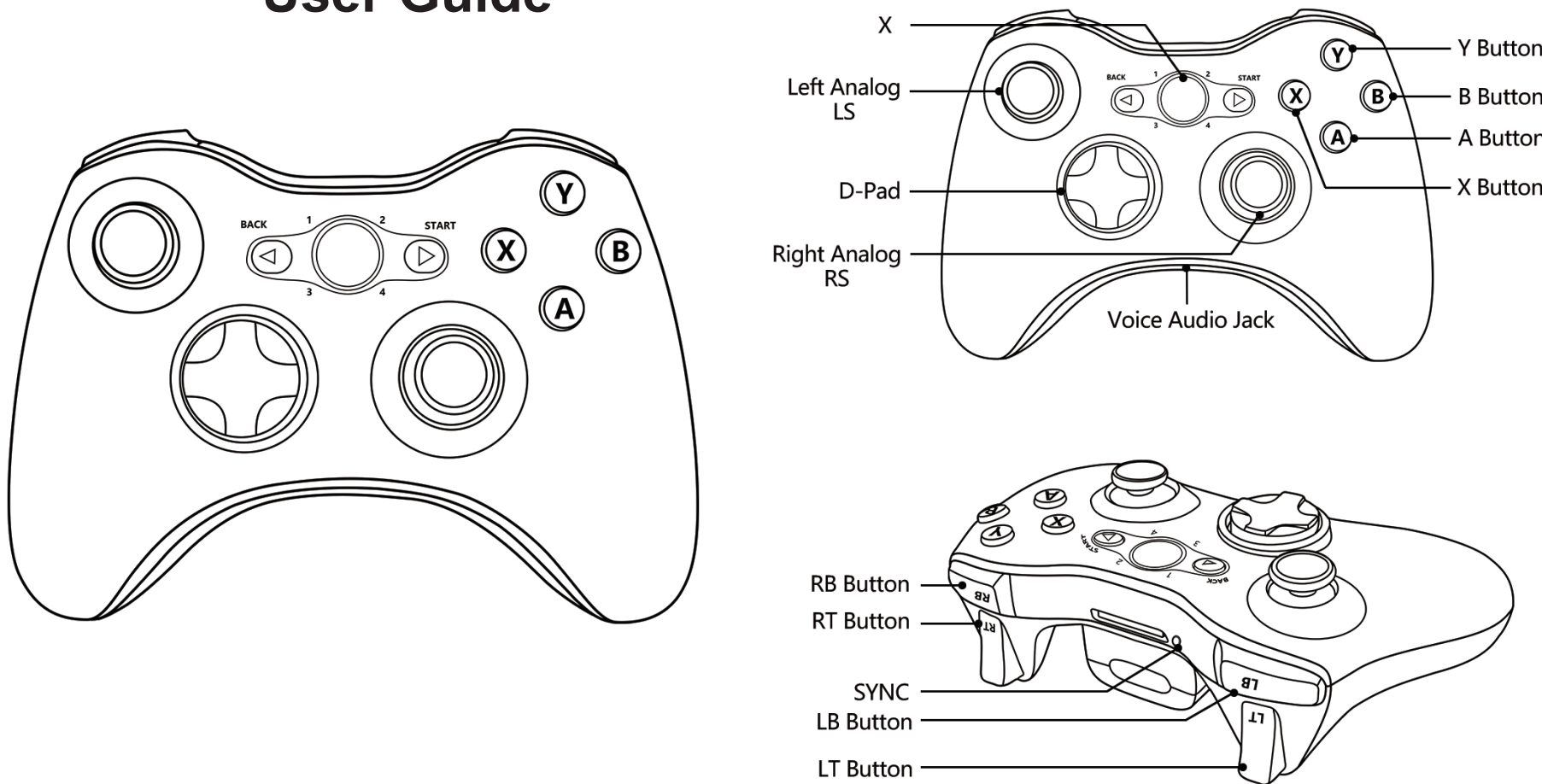


360 2.4G controller (audio)
User Guide

Controller Layout



Pre-Pairing Considerations:

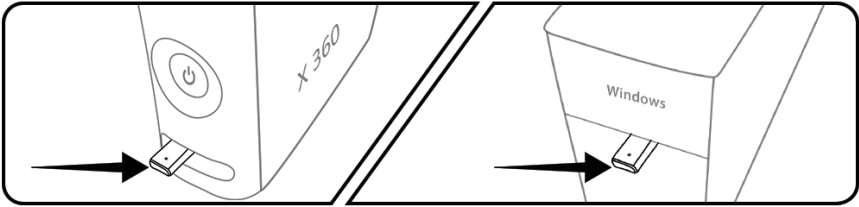
- *1. Ensure the controller is correctly inserted with 2AA batteries or the dedicated battery pack.
- *2. For seamless detection, connect the receiver into the USB port prior to powering on your device or launching an emulator. If the controller is not detected during pairing, consider restarting your device.

LED Indicator Guide:

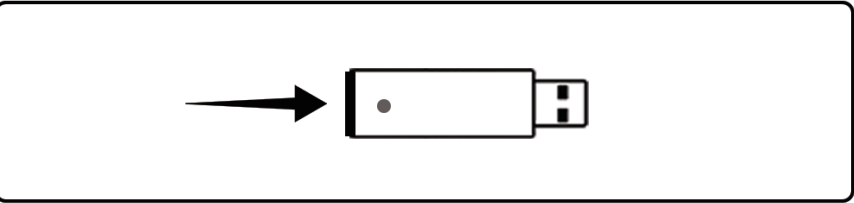
1. Press the "X" button, and the "4 LED" lights will flash slowly, indicating that the controller is powered on.
2. One of the "4 LED" lights remains illuminated indicating a successful pairing connection of the controller.
3. The "4 LED" indicator will display the channel of the controller.
4. When the controller is paired and in use, a slow, periodic blinking of the LED (approximately every 2.5 seconds) indicates low battery power.

How to Pair:

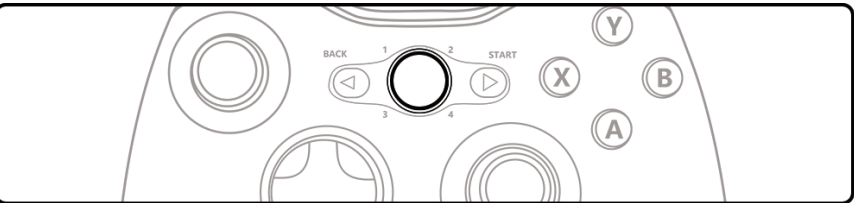
- Step 1. Insert the receiver into the device's USB port and wait for the LED on the receiver to start flashing.



- Step 2. Press the "SYNC" button on the Receiver once, and its LED will flash rapidly, entering pairing mode.

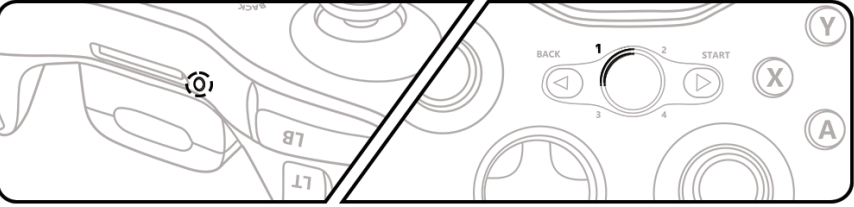


- Step 3. Press the "X" button to power on the Controller. The "4 LED" lights on the Controller will start flashing slowly.



- Step 4. Press and hold the "SYNC" button on the Controller until the "4 LED" lights start alternating flashing.

- Step 5. Wait for one of the "4 LED" on the Controller and the Receiver LED to remain illuminated at the same time, indicating the Controller successful pairing.



RF exposure statement

This equipment complies with the FCC and ISED radiation exposure limits set forth for an uncontrolled environment. This transmitter must not be co-located or operating in conjunction with any other antenna or transmitter.
Cet équipement est conforme aux limites d'exposition aux rayonnements de la FCC et de l'ISED établies pour un environnement non contrôlé. Cet émetteur ne doit pas être co-localisé ou fonctionner en conjonction avec une autre antenne ou un autre émetteur.

FCC Warning

This device complies with Part 15 of the FCC Rules. Operation is subject to the following two conditions:
(1) This device may not cause harmful interference, and (2) this device must accept any interference received, including interference that may cause undesired operation.

Note: This equipment has been tested and found to comply with the limits for a Class B digital device, pursuant to part 15 of the FCC Rules. These limits are designed to provide reasonable protection against harmful interference in a residential installation. This equipment generates, uses and can radiate radio frequency energy and, if not installed and used in accordance with the instructions, may cause harmful interference to radio communications. However, there is no guarantee that interference will not occur in a particular installation. If this equipment does cause harmful interference to radio or television reception, which can be determined by turning the equipment off and on, the user is encouraged to try to correct the interference by one or more of the following measures:
—Reorient or relocate the receiving antenna.
—Increase the separation between the equipment and receiver.
—Connect the equipment into an outlet on a circuit different from that to which the receiver is connected.
—Consult the dealer or an experienced radio/TV technician for help.
NOTE 2: Any changes or modifications to this unit not expressly approved by the party responsible for compliance could void the user's authority to operate the equipment.

IC WARNING

This device contains licence-exempt transmitter(s) that comply with Innovation, Science and Economic Development Canada's licence-exempt RSS(s). Operation is subject to the following two conditions:
(1) This device may not cause interference.
(2) This device must accept any interference, including interference that may cause undesired operation of the device.
L'émetteur/récepteur exempt de licence contenu dans le présent appareil est conforme aux CNR d'Innovation, Sciences et Développement économique Canada applicables aux appareils radio exempts de licence. L'exploitation est autorisée aux deux conditions suivantes:
1. L'appareil ne doit pas produire de brouillage;
2. L'appareil doit accepter tout brouillage radioélectrique subi, même si le brouillage est susceptible d'en compromettre le fonctionnement.