

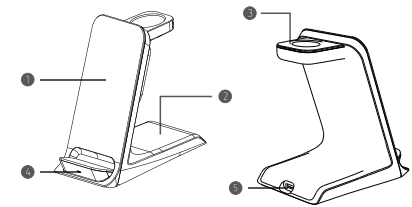
立式无线快充说明书 | SW16

前言

尊敬的用户，感谢您选购我公司产品。
为了进一步了解产品，使用前请仔细阅读本说明书。祝您
体验愉快！

产品示意图

- 1.无线充电区域1 (Phone)
- 2.无线充电区域2 (TWS)
- 3.无线充电区域3 (iWatch)
- 4.指示灯
- 5.Type-C USB



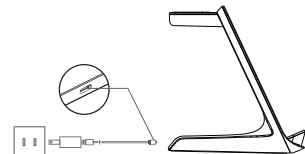
1

产品规格

输入: DC 9V~3A or 27W Min
输出1: 15W Max (Phone)
输出2: 5W Max (TWS)
输出3: 3.5W Max (iWatch)
产品尺寸: 115*70*124(mm)

连接示意图

- 1. 连接产品
 - a.按照示意图将产品接入电源。
 - b.将无线充电设备放入产品的无线充电区域。
 - c.当对应的指示灯常亮时，产品对该无线充电设备进行充电。

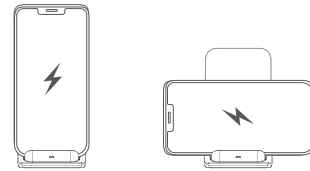


2.指示灯颜色状态

- a.当产品接通电源时，绿色、天蓝色指示灯依次闪烁一次，然后灯灭。

2

- b.当无线充电设备 (Phone) 放置于无线充电区域1，产品进入充电状态时，绿色指示灯常亮。
- c.当无线充电设备 (TWS) 放置于无线充电区域2，产品进入充电状态时，蓝色指示灯常亮。
- d.当两个设备同时放置于无线充电区域1和2充电时，天蓝色指示灯常亮。
- e.当金属异物放置在无线感应区域内，天蓝色指示灯闪烁 (FOD检测) 。



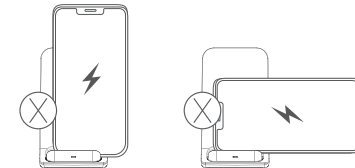
温馨提示

- a. 产品接入符合QC标准的电源适配器时，才可实现快速充电。
- b. 无线充电设备在充电的过程中属于充放电，发热为主要现象，建议设备在充满电后及时拔掉，避免长时间循环

3

充电，导致产品和充电设备持续发热，同时避免对设备
电池使用寿命的损耗。

**▲警告：双手机同时使用时，输入不得小于9V~3A，需
搭配使用PD3.0或QC4'以上充电头，否则启动充电保护。**



注意事项

- 1.仅限在室内和干燥环境下使用，避免放置于高温、潮湿、
油污的环境中。
- 2.严禁将产品在强磁环境下放置或使用。
- 3.避免放在婴儿和儿童容易触及的地方。
- 4.若产品进水或粘有污物、尘土，请勿使用。
- 5.非专业人员请勿擅自拆开维修。

产品清单

产品x1 说明书x1 数据线x1

4

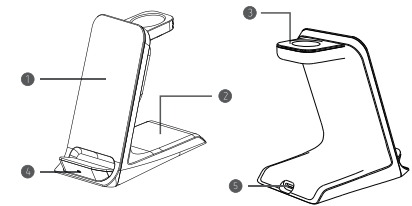
USER MANUAL Fast Charge Wireless Charging Base |SW16

Preface

Thank you for purchasing our company's products.
For optimum operation, please read this manual carefully before use.

Product Details

- 1. Wireless Charging Area 1 (Phone)
- 2. Wireless Charging Area 2 (TWS)
- 3. Wireless Charging Area 3 (iWatch)
- 4. Indicator Light
- 5. Type-C USB



6

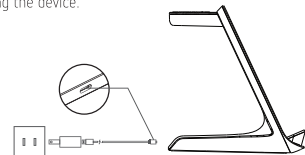
Specification

Input: DC 9V~3A or 27W Min
Output1: 15W Max (Phone)
Output2: 5W Max (TWS)
Output3: 3.5W Max (iWatch)
Size: 115*70*124(mm)

How it works

1.Connection Instruction

- a. Connecting the power supply according to the diagram.
- b. Put device on wireless charging area.
- c. When the Indicator light is always on, it indicates that it is
charging the device.

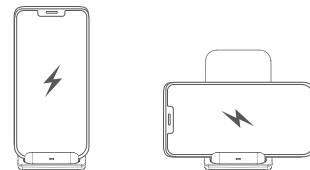


2.Power Indicator light Instuction

- a. When connecting the power, the green light and sky blue light
flashes once orderly, then die out.

7

- b. When the device is put (Phone) in the charging area 1, the
charger turns into the charging status, the green indicator light
is always on.
- c. When the device is put (TWS earphone) in the charging area 2,
the charger turns into the charging status, the sky blue
indicator light is always on.
- d. When two devices on put into wireless charging area 1 and 2 at
the same time, the sky blue indicator light is always on.
- e. The sky blue light flashes when other metallic foreign objects
are placed in the wireless charging zone. (FOD detection)

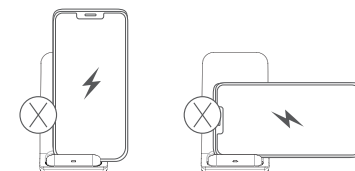


Notice:

- a. Please use QC compatible power adapter to achieve fast charge.
- b. It is a normal phenomenon of fever during the charging process.
Please kindly take off the device after full charge to protect
device and wireless charger.

8

**▲ Warning: When charging Dual phones simultaneously, the input
data mustnot be less than 9V~3A. It must be used with PD3.0 or
QC4* adapter, otherwise activate the charging protection.**



Product and Safety info

- 1. Do not store or use it in high temperature, humidity or dirty areas.
- 2. Do not store or use it in strong magnetic fields.
- 3. Keep out of the reach of children.
- 4. Do not expose to water or heavy dust. Keep it dry and clean.
- 5. Non-professional workers do not maintenance device without
authorization.

Package Content

1 x Product 1 x User Manual 1 x Charging Cable(1m)

9

FCC Statement

This device complies with Part 15 of the FCC rules. Operation is subject to the
following two conditions: 1) this device may not cause harmful interference, and 2)
this device must accept any interference received, including interference that may
cause undesired operation.

Note: This equipment has been tested and found to comply with the limits for a Class
B digital device, pursuant to part 15 of the FCC Rules. These limits are designed to
provide reasonable protection against harmful interference in a residential installation.
This equipment generates uses and can radiate radio frequency energy and, if not
installed and used in accordance with the instructions, may cause harmful
interference to radio communications. However, there is no guarantee that
interference will not occur in particular installation. If this equipment does cause
harmful interference to radio or television reception, which can be determined by
turning the equipment off and on, the user is encouraged to try to correct the
interference by one or more of the following measures:

- Reorient or relocate the receiving antenna.
 - Increase the separation between the equipment and receiver.
 - Connect the equipment into an outlet on a circuit different from that to which the
receiver is connected.
 - Consult the dealer or an experienced radio/TV technician for help.
- Changes or modifications not expressly approved by the party responsible for
compliance could void the user's authority to operate the equipment.

Radiation Exposure Statement

This device complies with FCC RF radiation exposure limits set forth for an
uncontrolled environment. This transmitter must not be co-located or operating in
conjunction with any other antenna or transmitter. During the operation of device a
distance of 15 cm surrounding the device and 20 cm above the top surface of the
device must be respected.

10