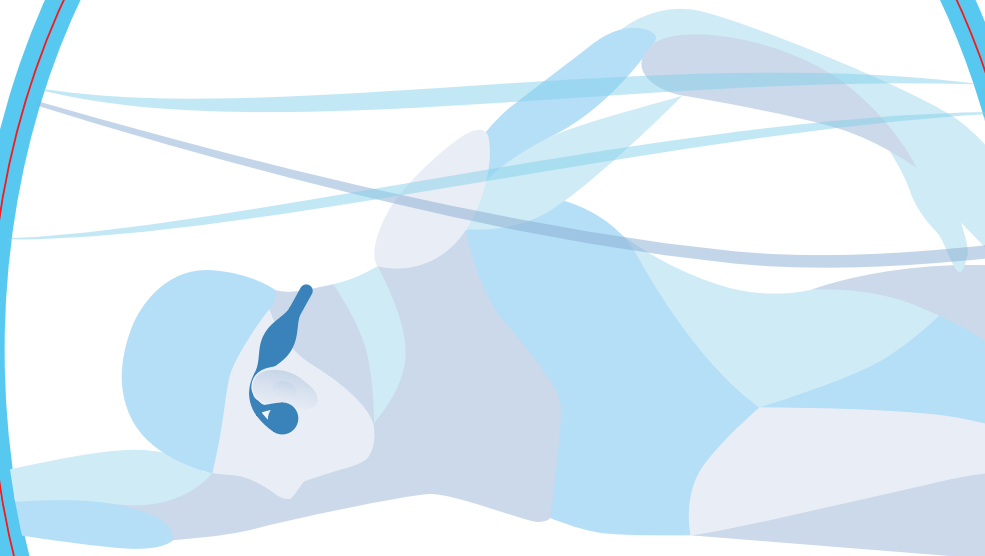


zygo

QUICK START GUIDE




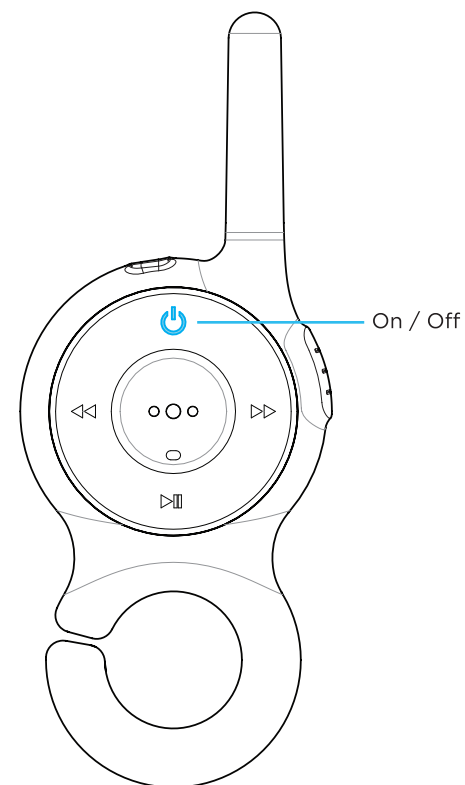
For more information, please
refer to the instruction manual

Download our app
for guided workouts

  @zygogram

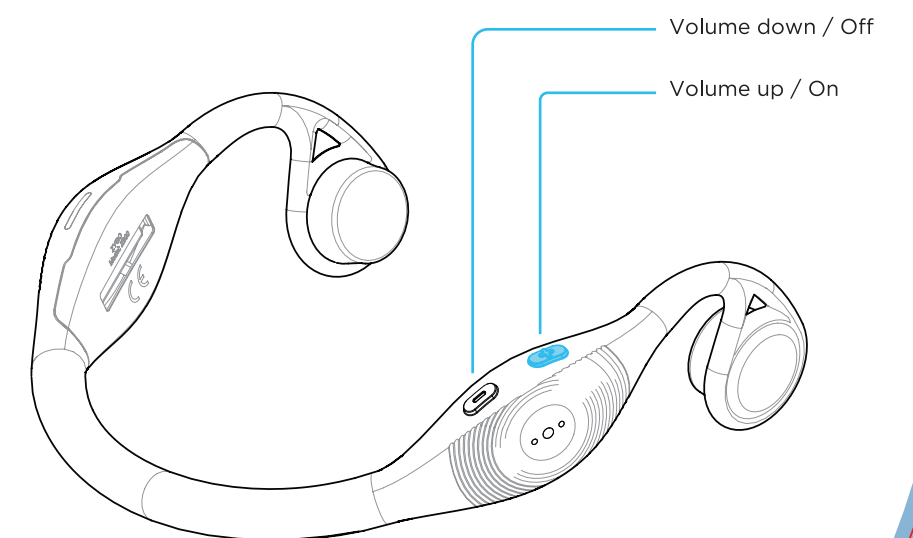
1

Place the transmitter next to the headset
and turn it on by holding  for 3 seconds.



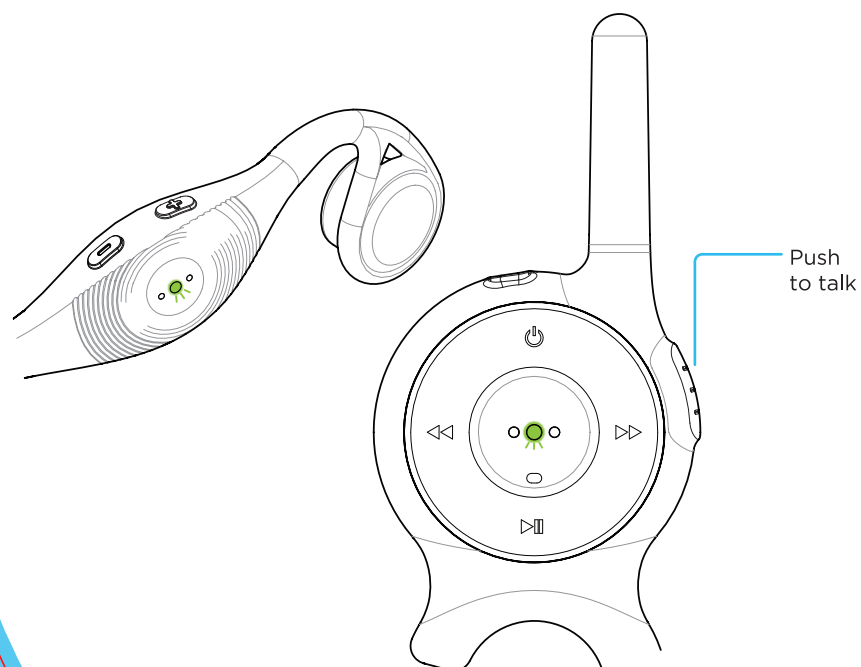
2

Turn on the headset by holding  for 3 seconds.



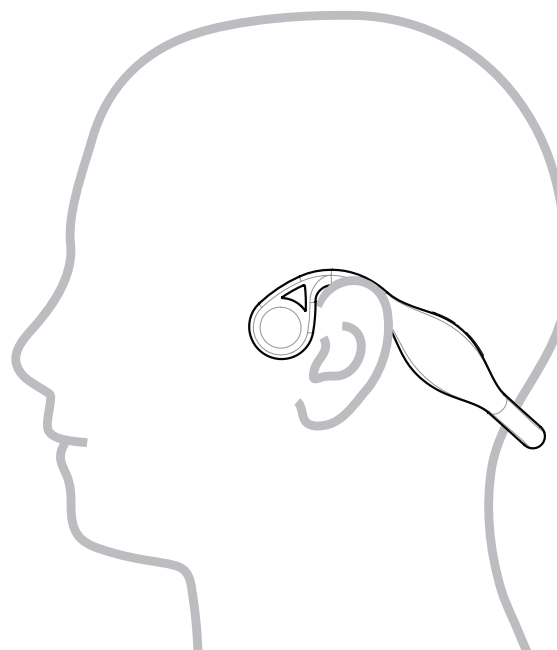
3

Blinking green lights indicate that they're pairing.
Solid green lights indicate that they've paired.



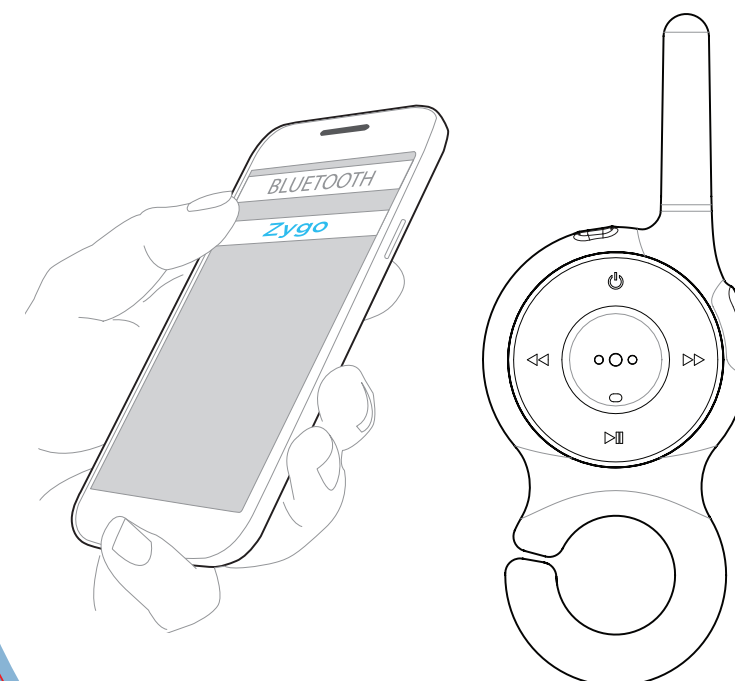
4

The headset uses bone conduction.
The pads rest in front of your ears, not in them.



5

Activate Bluetooth on your phone and
select Zygo from the list of devices.



Download our app
for guided workouts

  @zygogram