



TEST REPORT

Report Reference No...... : **TRE1810003801** R/C.....: 96527
FCC ID..... : **2APZHSC93200MDBVG3**
Applicant's name..... : **Nexus ID Solutions AB**
Address..... : Telefonvägen 26,126 26 Hägersten Sweden
Manufacturer..... : CiVinTec Global Co., Limited
Address..... : F17,1703,Headquarters Economic Center Building, Zhonghaixin Science&Technology Park, Bulan Rd, Shenzhen,China.
Test item description : **Access Control Door Reader**
Trade Mark : -
Model/Type reference..... : SC93200-MDB-VG3
Listed Model(s) : -
Standard : **FCC CFR Title 47 Part 15 Subpart C Section 15.247**
Date of receipt of test sample..... : Oct.09,2018
Date of testing..... : Oct.09,2018 ~ Oct.22,2018
Date of issue..... : Oct.22,2018
Result..... : **PASS**

Compiled by
(Position+Printed name+Signature) : File administrators Yueming Li

Yueming Li

Supervised by
(Position+Printed name+Signature) : Project Engineer Tom Ouyang

Tom Ouyang

Approved by
(Position+Printed name+Signature) : RF Manager Hans Hu

Hans Hu

Testing Laboratory Name : **Shenzhen Huatongwei International Inspection Co., Ltd.**

Address..... : 1/F, Bldg 3, Hongfa Hi-tech Industrial Park, Genyu Road, Tianliao, Gongming, Shenzhen, China

Shenzhen Huatongwei International Inspection Co., Ltd. All rights reserved.

This publication may be reproduced in whole or in part for non-commercial purposes as long as the Shenzhen Huatongwei International Inspection Co., Ltd. is acknowledged as copyright owner and source of the material. Shenzhen Huatongwei International Inspection Co., Ltd. takes no responsibility for and will not assume liability for damages resulting from the reader's interpretation of the reproduced material due to its placement and context.

The test report merely correspond to the test sample.

Contents

| | | |
|------------------|-------------------------------------------------|------------------|
| <u>1.</u> | <u>TEST STANDARDS AND REPORT VERSION</u> | <u>3</u> |
| 1.1. | Test Standards | 3 |
| 1.2. | Report version | 3 |
| <u>2.</u> | <u>TEST DESCRIPTION</u> | <u>4</u> |
| <u>3.</u> | <u>SUMMARY</u> | <u>5</u> |
| 3.1. | Client Information | 5 |
| 3.2. | Product Description | 5 |
| 3.3. | Operation state | 6 |
| 3.4. | EUT configuration | 6 |
| 3.5. | Modifications | 6 |
| <u>4.</u> | <u>TEST ENVIRONMENT</u> | <u>7</u> |
| 4.1. | Address of the test laboratory | 7 |
| 4.2. | Test Facility | 7 |
| 4.3. | Environmental conditions | 8 |
| 4.4. | Statement of the measurement uncertainty | 8 |
| 4.5. | Equipments Used during the Test | 9 |
| <u>5.</u> | <u>TEST CONDITIONS AND RESULTS</u> | <u>11</u> |
| 5.1. | Antenna Requirement | 11 |
| 5.2. | Conducted Emissions (AC Main) | 12 |
| 5.3. | Conducted Peak Output Power | 13 |
| 5.4. | Power Spectral Density | 14 |
| 5.5. | 6dB bandwidth | 16 |
| 5.6. | Restricted band | 18 |
| 5.7. | Band edge and Spurious Emissions (conducted) | 20 |
| 5.8. | Spurious Emissions (radiated) | 25 |
| <u>6.</u> | <u>TEST SETUP PHOTOS</u> | <u>29</u> |
| <u>7.</u> | <u>EXTERNAL AND INTERNAL PHOTOS</u> | <u>30</u> |

1. TEST STANDARDS AND REPORT VERSION

1.1. Test Standards

The tests were performed according to following standards:

[FCC Rules Part 15.247](#): Frequency Hopping, Direct Spread Spectrum and Hybrid Systems that are in operation within the bands of 902-928 MHz, 2400-2483.5 MHz, and 5725-5850 MHz

[ANSI C63.10:2013](#): American National Standard for Testing Unlicensed Wireless Devices

[KDB 558074 D01 DTS Meas Guidance v05](#): Guidance for Compliance Measurements on Digital Transmission System, Frequency Hopping Spread Spectrum System, and Hybrid System Devices Operating under Section 15.247 of The FCC Rules

1.2. Report version

| Revision No. | Date of issue | Description |
|--------------|---------------|-------------|
| N/A | 2018-10-22 | Original |
| | | |
| | | |
| | | |
| | | |

2. TEST DESCRIPTION

| Test Item | FCC Rule | Result | Test Engineer |
|------------------------------------|------------------|--------|---------------|
| Antenna requirement | 15.203/15.247(c) | PASS | Xiaokang Tan |
| Line Conducted Emissions (AC Main) | 15.207 | PASS | Xiaokang Tan |
| Conducted Peak Output Power | 15.247(b)(3) | PASS | Xiaokang Tan |
| Power Spectral Density | 15.247(e) | PASS | Xiaokang Tan |
| 6dB Bandwidth | 15.247(a)(2) | PASS | Xiaokang Tan |
| Restricted band | 15.247(d)/15.205 | PASS | Xiaokang Tan |
| Spurious Emissions | 15.247(d)/15.209 | PASS | Xiaokang Tan |

Note: The measurement uncertainty is not included in the test result.

3. SUMMARY

3.1. Client Information

| | |
|---------------|----------------------------------------------------------------------------------------------------------------|
| Applicant: | Nexus ID Solutions AB |
| Address: | Telefonvägen 26,126 26 Hägersten Sweden |
| Manufacturer: | CiVinTec Global Co., Limited |
| Address: | F17,1703,Headquarters Economic Center Building, Zhonghaixin Science&Technology Park, Bulan Rd, Shenzhen,China. |

3.2. Product Description

| | |
|----------------------|----------------------------|
| Name of EUT: | Access Control Door Reader |
| Trade Mark: | - |
| Model No.: | SC93200-MDB-VG3 |
| Listed Model(s): | - |
| Power supply: | DC 12V |
| Adapter information: | - |
| Hardware version: | V1.7 |
| Software version: | V3.2 |
| Bluetooth | |
| Version: | Supported BT4.0+BLE |
| Modulation: | GFSK |
| Operation frequency: | 2402MHz~2480MHz |
| Channel number: | 40 |
| Channel separation: | 2MHz |
| Antenna type: | Pcblayout Antenna |
| Antenna gain: | 0dBi |

3.3. Operation state

➤ Test frequency list

According to section 15.31(m), regards to the operating frequency range over 10 MHz, must select three channel which were tested. the Lowest frequency, the middle frequency, and the highest frequency of channel were selected to perform the test, please see the above gray bottom.

| Channel | Frequency (MHz) |
|---------|-----------------|
| 00 | 2402 |
| 01 | 2404 |
| : | : |
| 19 | 2440 |
| : | : |
| 38 | 2478 |
| 39 | 2480 |

➤ Test mode

| |
|------------------------------------------------------------------------------------------------------------------------------------------------------------------------------------------------------------------------------------------|
| For RF test items |
| The engineering test program was provided and enabled to make EUT continuous transmit (duty cycle>98%). |
| For AC power line conducted emissions: |
| The EUT was set to connect with the Bluetooth instrument under large package sizes transmission. |
| For Radiated suprious emissions test item: |
| The engineering test program was provided and enabled to make EUT continuous transmit(duty cycle>98%). The EUT in each of three orthogonal axis emissions had been tested ,but only the worst case (X axis) data Recorded in the report. |

3.4. EUT configuration

The following peripheral devices and interface cables were connected during the measurement:

- - supplied by the manufacturer
- - supplied by the lab

| | | |
|---|---------------|---|
| / | Manufacturer: | / |
| | Model No.: | / |
| / | Manufacturer: | / |
| | Model No.: | / |

3.5. Modifications

No modifications were implemented to meet testing criteria.

4. TEST ENVIRONMENT

4.1. Address of the test laboratory

Laboratory: Shenzhen Huatongwei International Inspection Co., Ltd.

Address: 1/F, Bldg 3, Hongfa Hi-tech Industrial Park, Genyu Road, Tianliao, Gongming, Shenzhen, China

4.2. Test Facility

CNAS-Lab Code: L1225

Shenzhen Huatongwei International Inspection Co., Ltd. has been assessed and proved to be in compliance with CNAS-CL01 Accreditation Criteria for Testing and Calibration Laboratories (identical to ISO/IEC17025: 2005 General Requirements) for the Competence of Testing and Calibration Laboratories.

A2LA-Lab Cert. No.: 3902.01

Shenzhen Huatongwei International Inspection Co., Ltd. EMC Laboratory has been accredited by A2LA for technical competence in the field of electrical testing, and proved to be in compliance with ISO/IEC 17025: 2005 General Requirements for the Competence of Testing and Calibration Laboratories and any additional program requirements in the identified field of testing.

FCC-Registration No.: 762235

Shenzhen Huatongwei International Inspection Co., Ltd. EMC Laboratory has been registered and fully described in a report filed with the FCC (Federal Communications Commission). The acceptance letter from the FCC is maintained in our files.

IC-Registration No.:5377B-1

Two 3m Alternate Test Site of Shenzhen Huatongwei International Inspection Co., Ltd. has been registered by Certification and Engineering Bureau of Industry Canada for the performance of radiated measurements with Registration No.: 5377B-1.

ACA

Shenzhen Huatongwei International Inspection Co., Ltd. EMC Laboratory can also perform testing for the Australian C-Tick mark as a result of our A2LA accreditation.

4.3. Environmental conditions

During the measurement the environmental conditions were within the listed ranges:

| | |
|--------------------|-------------|
| Temperature: | 15~35°C |
| Relative Humidity: | 30~60 % |
| Air Pressure: | 950~1050mba |

4.4. Statement of the measurement uncertainty

The data and results referenced in this document are true and accurate. The reader is cautioned that there may be errors in calibration limits of the equipment and facilities. The measurement uncertainty was calculated for all measurements listed in this test report according to TR-100028-01 "Electromagnetic compatibility and Radio spectrum Matters (ERM); Uncertainties in the measurement of mobile radio equipment characteristics; Part 1" and TR-100028-02 "Electromagnetic compatibility and Radio spectrum Matters (ERM); Uncertainties in the measurement of mobile radio equipment characteristics; Part 2" and is documented in the Shenzhen Huatongwei International Inspection Co., Ltd. quality system according to ISO/IEC 17025. Furthermore, component and process variability of devices similar to that tested may result in additional deviation. The manufacturer has the sole responsibility of continued compliance of the device.

Here after the best measurement capability for Shenzhen Huatongwei International Inspection Co., Ltd. is reported:

| Test Items | Measurement Uncertainty | Notes |
|-----------------------------------------|--------------------------------------|-------|
| Transmitter power conducted | 0.63 dB | (1) |
| Transmitter power Radiated | 2.38dB for <1GHz 3.45dB for >1GHz | (1) |
| Conducted spurious emissions 9kHz~40GHz | 0.63 dB | (1) |
| Conducted Disturbance 150kHz~30MHz | 3.35 dB | (1) |
| Radiated Emissions 30~1000MHz | 4.80 dB | (1) |
| Radiated spurious emissions above 1GHz | 3.45 dB | (1) |
| Occupied Bandwidth | 18Hz for <1GHz 69Hz for >1GHz | (1) |

(1) This uncertainty represents an expanded uncertainty expressed at approximately the 95% confidence level using a coverage factor of k=1.96.

4.5. Equipments Used during the Test

| Conducted Emissions | | | | | | |
|---------------------|---------------------|--------------|-----------|------------|-------------------------|-------------------------|
| Item | Test Equipment | Manufacturer | Model No. | Serial No. | Last Cal. (mm-dd-yy) | Next Cal. (mm-dd-yy) |
| 1 | EMI Test Receiver | R&S | ESCI | 101247 | 11/11/2017 | 11/10/2018 |
| 2 | Artificial Mains | SCHWARZBECK | NNLK 8121 | 573 | 11/11/2017 | 11/10/2018 |
| 3 | 2-Line V-Network | R&S | ESH3-Z5 | 100049 | 11/11/2017 | 11/10/2018 |
| 4 | Pulse Limiter | R&S | ESH3-Z2 | 101488 | 11/11/2017 | 11/10/2018 |
| 5 | RF Connection Cable | HUBER+SUHNER | EF400 | N/A | 11/21/2017 | 11/20/2018 |
| 6 | Test Software | R&S | ES-K1 | N/A | N/A | N/A |

| Radiated Emissions | | | | | | |
|--------------------|-------------------------|--------------------|--------------|--------------|-------------------------|-------------------------|
| Item | Test Equipment | Manufacturer | Model No. | Serial No. | Last Cal. (mm-dd-yy) | Next Cal. (mm-dd-yy) |
| 1 | Semi-Anechoic Chamber | Albatross projects | SAC-3m-01 | C11121 | 10/16/2016 | 10/15/2019 |
| 2 | EMI Test Receiver | R&S | ESCI | 100900 | 11/11/2017 | 11/10/2018 |
| 3 | Loop Antenna | R&S | HFH2-Z2 | 100020 | 11/20/2017 | 11/19/2020 |
| 4 | Ultra-Broadband Antenna | SCHWARZBECK | VULB9163 | 538 | 4/5/2017 | 4/4/2020 |
| 5 | Horn Antenna | SCHWARZBECK | 9120D | 1011 | 3/27/2017 | 3/26/2020 |
| 6 | Broadband Horn Antenna | SCHWARZBECK | BBHA9170 | BBHA9170 472 | 3/27/2017 | 3/26/2020 |
| 7 | Pre-amplifier | SCHWARZBECK | BBV 9743 | 9743-0022 | 10/18/2018 | 10/17/2019 |
| 8 | Broadband Pre-amplifier | SCHWARZBECK | BBV 9718 | 9718-248 | 10/18/2018 | 10/17/2019 |
| 9 | Spectrum Analyzer | R&S | FSP40 | 100597 | 11/11/2017 | 11/10/2018 |
| 10 | RF Connection Cable | HUBER+SUHNER | RE-7-FL | N/A | 11/21/2017 | 11/20/2018 |
| 11 | RF Connection Cable | HUBER+SUHNER | RE-7-FH | N/A | 11/21/2017 | 11/20/2018 |
| 12 | Test Software | Audix | E3 | N/A | N/A | N/A |
| 13 | Test Software | R&S | ES-K1 | N/A | N/A | N/A |
| 14 | Turntable | Maturo Germany | TT2.0-1T | N/A | N/A | N/A |
| 15 | Antenna Mast | Maturo Germany | CAM-4.0-P-12 | N/A | N/A | N/A |

| RF Conducted Test | | | | | | |
|-------------------|---------------------|--------------|-----------|------------|-------------------------|-------------------------|
| Item | Test Equipment | Manufacturer | Model No. | Serial No. | Last Cal. (mm-dd-yy) | Next Cal. (mm-dd-yy) |
| 1 | Spectrum Analyzer | R&S | FSV40 | 100048 | 11/11/2017 | 11/10/2018 |
| 2 | EXA Signal Analyzer | Agilent | N9020A | 184247 | 9/22/2018 | 9/21/2019 |
| 3 | Power Meter | Anritsu | ML249A | N/A | 9/22/2018 | 9/21/2019 |
| 4 | OSP | R&S | OSP120 | 101317 | N/A | N/A |

5. TEST CONDITIONS AND RESULTS

5.1. Antenna Requirement

Requirement

FCC CFR Title 47 Part 15 Subpart C Section 15.203:

An intentional radiator shall be designed to ensure that no antenna other than that furnished by the responsible party shall be used with the device. The use of a permanently attached antenna or of an antenna that uses a unique coupling to the intentional radiator, the manufacturer may design the unit so that a broken antenna can be replaced by the user, but the use of a standard antenna jack or electrical connector is prohibited.

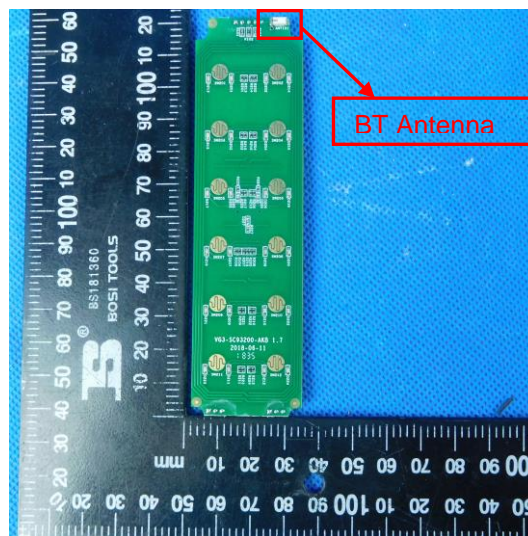
FCC CFR Title 47 Part 15 Subpart C Section 15.247(c) (1)(i):

(i) Systems operating in the 2400-2483.5 MHz band that is used exclusively for fixed. Point-to-point operations may employ transmitting antennas with directional gain greater than 6 dBi provided the maximum conducted output power of the intentional radiator is reduced by 1 dB for every 3 dB that the directional gain of the antenna exceeds 6 dBi.

TEST RESULTS

☒ Passed ☐ Not Applicable

The directional gain of the antenna less than 6 dBi, please refer to the below antenna photo.



5.2. Conducted Emissions (AC Main)

LIMIT

FCC CFR Title 47 Part 15 Subpart C Section 15.207

| Frequency range (MHz) | Limit (dBuV) | |
|-----------------------|--------------|-----------|
| | Quasi-peak | Average |
| 0.15-0.5 | 66 to 56* | 56 to 46* |
| 0.5-5 | 56 | 46 |
| 5-30 | 60 | 50 |

* Decreases with the logarithm of the frequency.

TEST CONFIGURATION



TEST PROCEDURE

1. The EUT was setup according to ANSI C63.10:2013 requirements.
2. The EUT was placed on a platform of nominal size, 1 m by 1.5 m, raised 80 cm above the conducting ground plane. The vertical conducting plane was located 40 cm to the rear of the EUT. All other surfaces of EUT were at least 80 cm from any other grounded conducting surface.
3. The EUT and simulators are connected to the main power through a line impedances stabilization network (LISN). The LISN provides a 50 ohm /50uH coupling impedance for the measuring equipment.
4. The peripheral devices are also connected to the main power through a LISN. (Please refer to the block diagram of the test setup and photographs)
5. Each current-carrying conductor of the EUT power cord, except the ground (safety) conductor, was individually connected through a LISN to the input power source.
6. The excess length of the power cord between the EUT and the LISN receptacle were folded back and forth at the center of the lead to form a bundle not exceeding 40 cm in length.
7. Conducted emissions were investigated over the frequency range from 0.15MHz to 30MHz using a receiver bandwidth of 9 kHz.
8. During the above scans, the emissions were maximized by cable manipulation.

TEST MODE:

Please refer to the clause 3.3

TEST RESULTS

☐ Passed ☒ Not Applicable

Note:

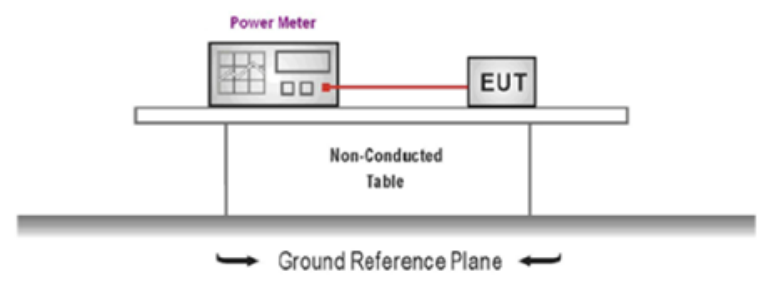
- 1) Transd = Cable lose + Pulse Limiter Factor + Artificial Mains Factor
- 2) Margin = Limit - Level

5.3. Conducted Peak Output Power

LIMIT

FCC CFR Title 47 Part 15 Subpart C Section 15.247 (b)(3): 30 dBm

TEST CONFIGURATION



TEST PROCEDURE

1. The EUT was tested according to ANSI C63.10: 2013 and KDB 558074 D01 for compliance to FCC 47 CFR 15.247 requirements.
2. The maximum peak conducted output power may be measured using a broadband peak RF power meter.
3. The power meter shall have a video bandwidth that is greater than or equal to the DTS bandwidth and shall utilize a fast-responding diode detector.
4. Record the measurement data.

TEST MODE:

Please refer to the clause 3.3

TEST RESULTS

☒ Passed ☐ Not Applicable

| Type | Channel | Output power (dBm) | Limit (dBm) | Result |
|--------|---------|--------------------|-------------|--------|
| BT-BLE | 00 | -8.11 | ≤30.00 | Pass |
| | 19 | -8.83 | | |
| | 39 | -9.53 | | |

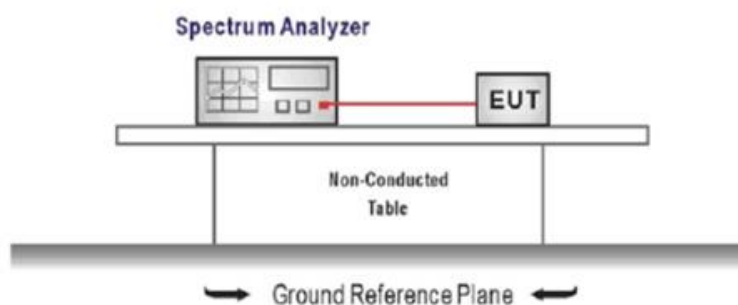
5.4. Power Spectral Density

LIMIT

FCC CFR Title 47 Part 15 Subpart C Section 15.247 (e):

For digitally modulated systems, the power spectral density conducted from the intentional radiator to the antenna shall not be greater than 8 dBm in any 3 kHz band during any time interval of continuous transmission.

TEST CONFIGURATION



TEST PROCEDURE

1. Connect the antenna port(s) to the spectrum analyzer input,
2. Configure the spectrum analyzer as shown below:
Center frequency=DTS channel center frequency
Span =1.5 times the DTS bandwidth
 $RBW = 3 \text{ kHz} \leq RBW \leq 100 \text{ kHz}$, $VBW \geq 3 \times RBW$
Sweep time = auto couple
Detector = peak
Trace mode = max hold
3. Place the radio in continuous transmit mode, allow the trace to stabilize, view the transmitter wave form on the spectrum analyzer.
4. Use the peak marker function to determine the maximum amplitude level within the RBW.
5. If measured value exceeds limit, reduce RBW (no less than 3 kHz) and repeat.

TEST MODE:

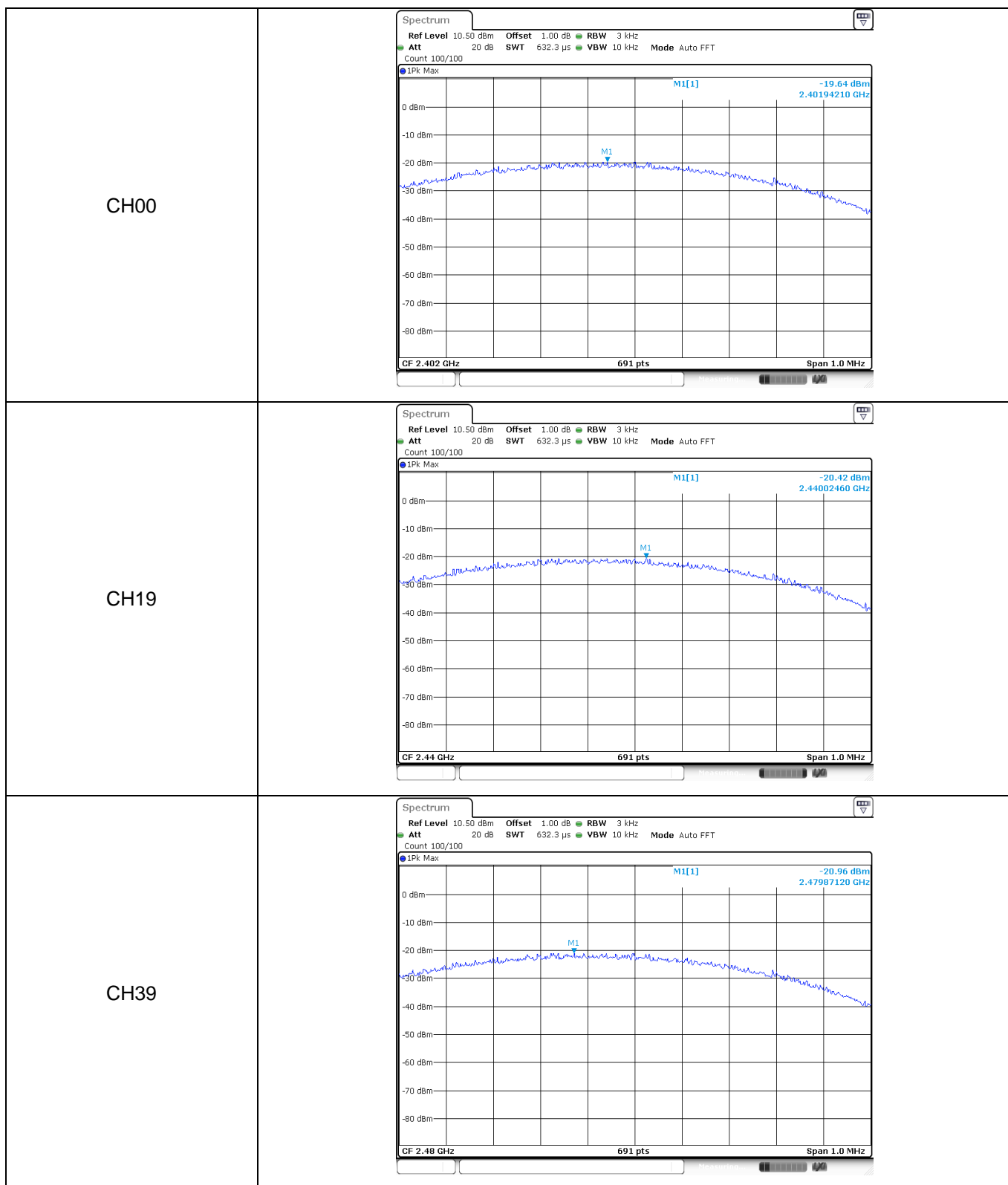
Please refer to the clause 3.3

TEST RESULTS

☒ **Passed** ☐ **Not Applicable**

| Type | Channel | Power Spectral Density(dBm/3KHz) | Limit (dBm/3KHz) | Result |
|--------|---------|----------------------------------|------------------|--------|
| BT-BLE | 00 | -19.64 | ≤8.00 | Pass |
| | 19 | -20.42 | | |
| | 39 | -20.96 | | |

Test plot as follows:



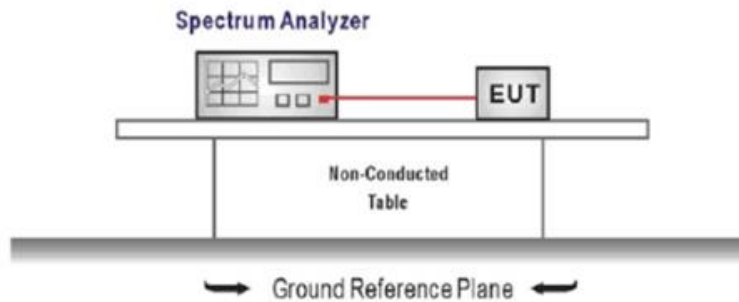
5.5. 6dB bandwidth

LIMIT

FCC CFR Title 47 Part 15 Subpart C Section 15.247 (a)(2):

For digital modulation systems, the minimum 6 dB bandwidth shall be at least 500 kHz.

TEST CONFIGURATION



TEST PROCEDURE

1. Connect the antenna port(s) to the spectrum analyzer input.
2. Configure the spectrum analyzer as shown below (enter all losses between the transmitter output and the spectrum analyzer).
 Center Frequency = DTS channel center frequency
 Span = 2 x DTS bandwidth
 RBW = 100 kHz, VBW ≥ 3 × RBW
 Sweep time = auto couple
 Detector = Peak
 Trace mode = max hold
3. Place the radio in continuous transmit mode, allow the trace to stabilize, view the transmitter waveform on the spectrum analyzer.
4. Measure the maximum width of the emission that is constrained by the frequencies associated with the two outermost amplitude points (upper and lower frequencies) that are attenuated by 6 dB relative to the maximum level measured in the fundamental emission, and record the pertinent measurements.

TEST MODE:

Please refer to the clause 3.3

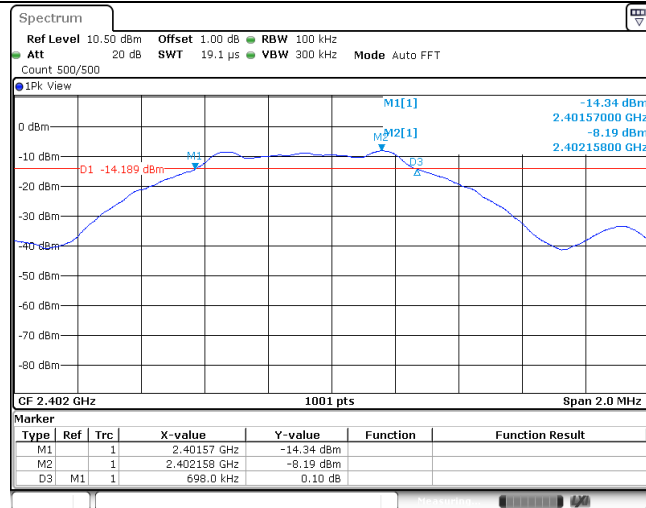
TEST RESULTS

☒ Passed ☐ Not Applicable

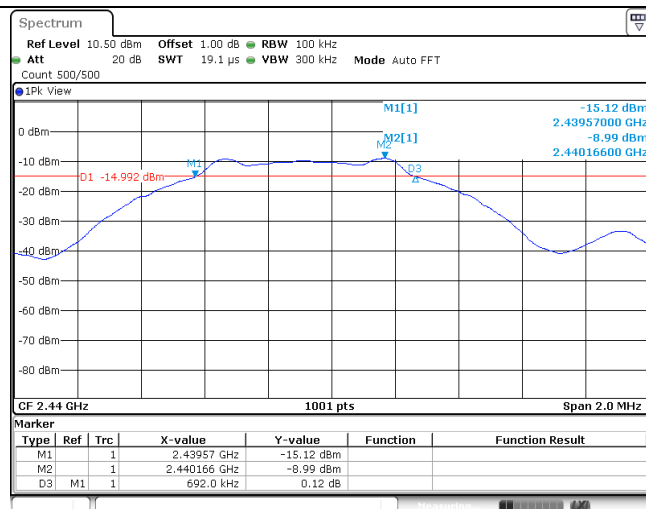
| Type | Channel | 6dB Bandwidth(MHz) | Limit (kHz) | Result |
|--------|---------|--------------------|-------------|--------|
| BT-BLE | 00 | 0.70 | ≥500 | Pass |
| | 19 | 0.69 | | |
| | 39 | 0.69 | | |

Test plot as follows:

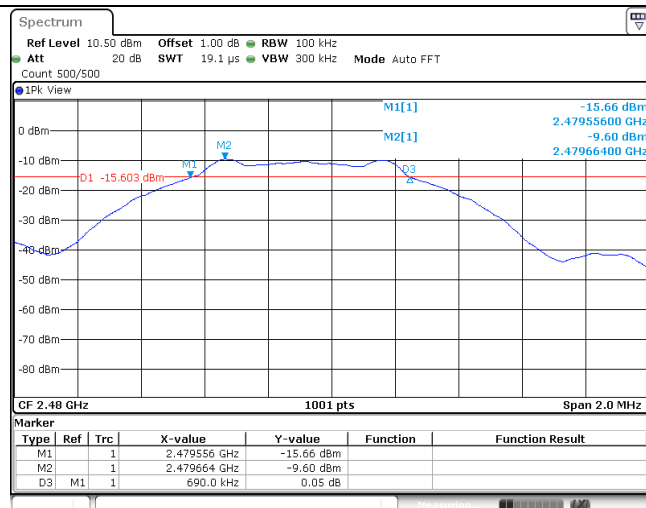
CH00



CH19



CH39



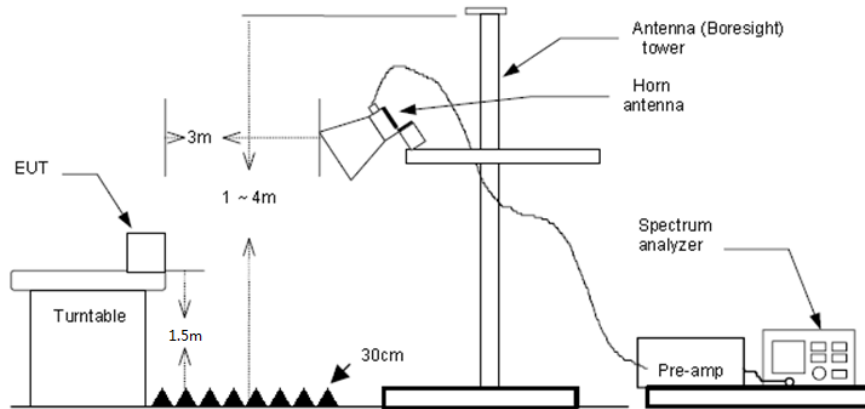
5.6. Restricted band

LIMIT

FCC CFR Title 47 Part 15 Subpart C Section 15.247 (d):

In any 100 kHz bandwidth outside the frequency band in which the spread spectrum or digitally modulated intentional radiator is operating, Radiated Emissions which fall in the restricted bands, as defined in §15.205(a), must also comply with the Radiated Emissions limits specified in §15.209(a) (see §15.205(c)).

TEST CONFIGURATION



TEST PROCEDURE

1. The EUT was setup and tested according to ANSI C63.10:2013 for compliance to FCC 47CFR 15.247 requirements.
2. The EUT is placed on a turn table which is 1.5 meter above ground. The turn table is rotated 360 degrees to determine the position of the maximum emission level.
3. The EUT was positioned such that the distance from antenna to the EUT was 3 meters.
4. The antenna is scanned from 1 meter to 4 meters to find out the maximum emission level. This is repeated for both horizontal and vertical polarization of the antenna. In order to find the maximum emission, all of the interface cables were manipulated according to ANSI C63.10:2013 on radiated measurement.
5. The receiver set as follow:
RBW=1MHz, VBW=3MHz Peak detector for Peak value.
RBW=1MHz, VBW=3MHz RMS detector for Average value.

TEST MODE:

Please refer to the clause 3.3

TEST RESULTS

☒ Passed ☐ Not Applicable

Note:

- 1) Final level= Read level + Antenna Factor+ Cable Loss- Preamp Factor
- 2) The peak level is lower than average limit(54 dBuV/m), this data is the too weak instrument of signal is unable to test.

| Test channel | | | | | CH00 | | | | |
|-----------------|-------------------|-----------------------|-----------------|--------------------------|----------------|---------------------|-----------------|--------------|------------|
| Frequency (MHz) | Read Level (dBuV) | Antenna Factor (dB/m) | Cable Loss (dB) | Preamplifier Factor (dB) | Level (dBuV/m) | Limit Line (dBuV/m) | Over Limit (dB) | Polarization | Test value |
| 2310.00 | 33.73 | 28.05 | 6.62 | 37.59 | 30.81 | 74.00 | -43.19 | Vertical | Peak |
| 2390.03 | 37.53 | 27.65 | 6.75 | 37.59 | 34.34 | 74.00 | -39.66 | Vertical | Peak |
| 2310.00 | 33.86 | 28.05 | 6.62 | 37.59 | 30.94 | 74.00 | -43.06 | Horizontal | Peak |
| 2390.03 | 37.59 | 27.65 | 6.75 | 37.59 | 34.40 | 74.00 | -39.60 | Horizontal | Peak |
| 2310.00 | 27.39 | 28.05 | 6.62 | 37.59 | 24.47 | 54.00 | -29.53 | Vertical | Average |
| 2390.03 | 29.74 | 27.65 | 6.75 | 37.59 | 26.55 | 54.00 | -27.45 | Vertical | Average |
| 2310.00 | 26.95 | 28.05 | 6.62 | 37.59 | 24.03 | 54.00 | -29.97 | Horizontal | Average |
| 2390.03 | 32.28 | 27.65 | 6.75 | 37.59 | 29.09 | 54.00 | -24.91 | Horizontal | Average |

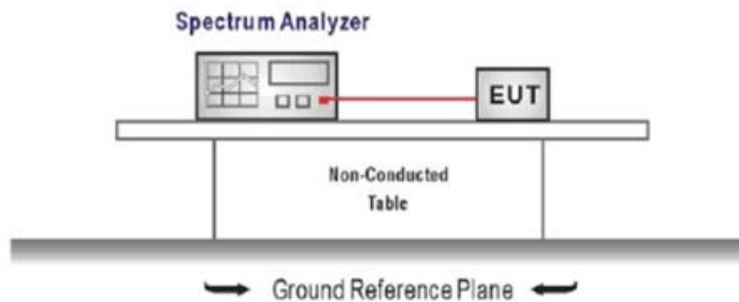
| Test channel | | | | | CH39 | | | | |
|-----------------|-------------------|-----------------------|-----------------|--------------------------|----------------|---------------------|-----------------|--------------|------------|
| Frequency (MHz) | Read Level (dBuV) | Antenna Factor (dB/m) | Cable Loss (dB) | Preamplifier Factor (dB) | Level (dBuV/m) | Limit Line (dBuV/m) | Over Limit (dB) | Polarization | Test value |
| 2483.50 | 45.00 | 27.26 | 6.83 | 37.59 | 41.50 | 74.00 | -32.50 | Vertical | Peak |
| 2500.00 | 35.09 | 27.20 | 6.84 | 37.59 | 31.54 | 74.00 | -42.46 | Vertical | Peak |
| 2483.50 | 47.66 | 27.26 | 6.83 | 37.59 | 44.16 | 74.00 | -29.84 | Horizontal | Peak |
| 2500.00 | 33.40 | 27.20 | 6.84 | 37.59 | 29.85 | 74.00 | -44.15 | Horizontal | Peak |
| 2483.50 | 40.80 | 27.26 | 6.83 | 37.59 | 37.30 | 54.00 | -16.70 | Vertical | Average |
| 2500.00 | 27.70 | 27.20 | 6.84 | 37.59 | 24.15 | 54.00 | -29.85 | Vertical | Average |
| 2483.50 | 43.84 | 27.26 | 6.83 | 37.59 | 40.34 | 54.00 | -13.66 | Horizontal | Average |
| 2500.00 | 27.40 | 27.20 | 6.84 | 37.59 | 23.85 | 54.00 | -30.15 | Horizontal | Average |

5.7. Band edge and Spurious Emissions (conducted)

LIMIT

FCC CFR Title 47 Part 15 Subpart C Section 15.247 (d): In any 100 kHz bandwidth outside the frequency band in which the spread spectrum intentional radiator is operating, the radio frequency power that is produced by the intentional radiator shall be at least 20 dB below that in the 100 kHz bandwidth within the band that contains the highest level of the desired power, based on either an RF conducted or a radiated measurement.

TEST CONFIGURATION



TEST PROCEDURE

1. Connect the antenna port(s) to the spectrum analyzer input.
2. Establish a reference level by using the following procedure
Center frequency=DTS channel center frequency
The span = 1.5 times the DTS bandwidth.
RBW = 100 kHz, VBW $\geq 3 \times$ RBW
Detector = peak, Sweep time = auto couple, Trace mode = max hold
Allow trace to fully stabilize
Use the peak marker function to determine the maximum PSD level

Note that the channel found to contain the maximum PSD level can be used to establish the reference level.

3. Emission level measurement
Set the center frequency and span to encompass frequency range to be measured
RBW = 100 kHz, VBW $\geq 3 \times$ RBW
Detector = peak, Sweep time = auto couple, Trace mode = max hold
Allow trace to fully stabilize
Use the peak marker function to determine the maximum amplitude level.
4. Place the radio in continuous transmit mode, allow the trace to stabilize, view the transmitter waveform on the spectrum analyzer.
5. Ensure that the amplitude of all unwanted emission outside of the authorized frequency band excluding restricted frequency bands) are attenuated by at least the minimum requirements specified (at least 20 dB relative to the maximum in-band peak PSD level in 100 kHz). Report the three highest emission relative to the limit.

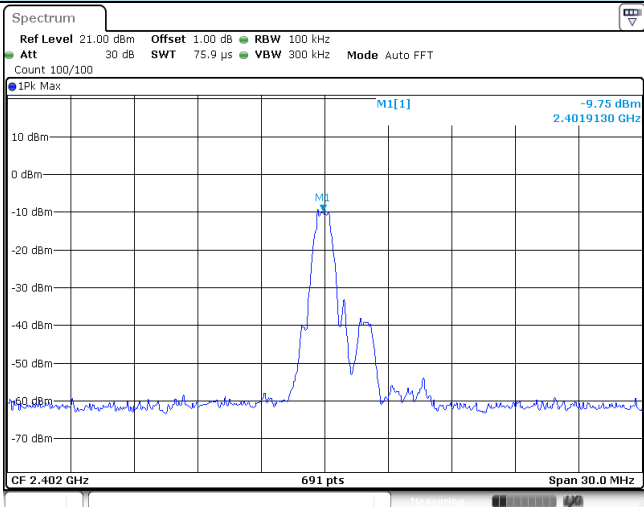
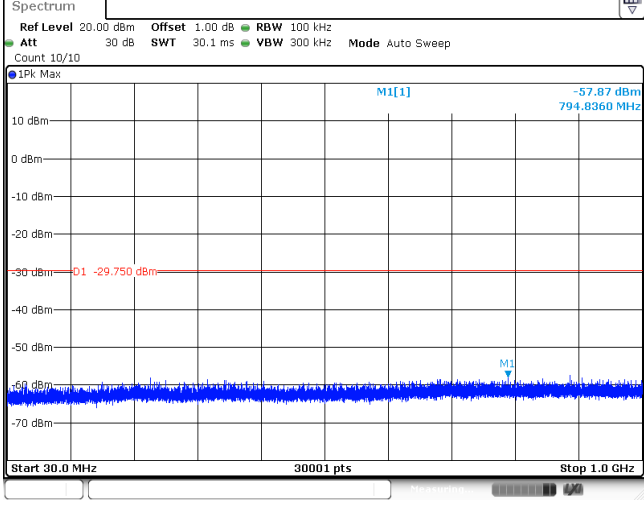
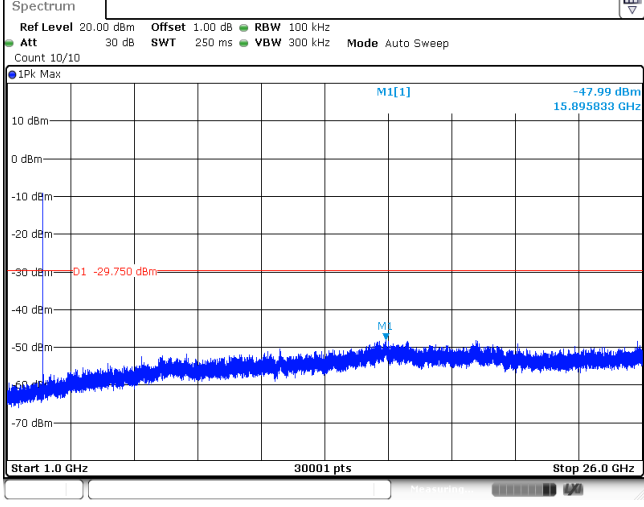
TEST MODE:

Please refer to the clause 3.3

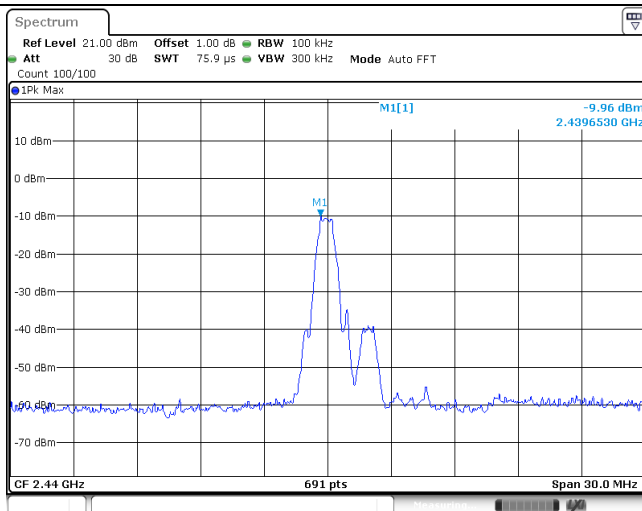
TEST RESULTS

☒ Passed ☐ Not Applicable

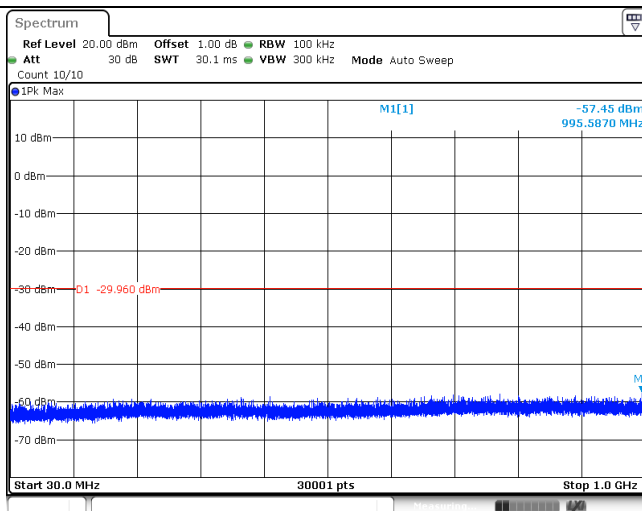
| Test Item: | Band edge | | | | | | | | | | | | | | | | | | | | | | | | | | | | | | | | | | | | | | | | | | |
|------------|---------------------------------------------------------------------------------------------------------------------------------------------------------------------------------------------------------------------------------------------------------------------------------------------------------------------------------------------------------------------------------------------------------------------------------------------------------------------------------------------------------------------------------------------------------------------------------------------------------------------------------------------------------------------------------------------------------------------------------------------------------------------------------------------------------------------------------------------------------------------------------------------------------------------------------------------------------------------------------------------------------------------------------------------------------------------------------------------------------------------------------------------------------------------------------------------------------------------------------------------------------------------------------------------------------------------------------------------------------------------------------------------------------------------------------------------------------------------------------------------|------|---------------|------------|----------|-----------------|----------|-----------------|----|---|--|--------------|-----------|--|--|----|---|--|------------|------------|--|--|----|---|--|----------|------------|--|--|----|---|--|---------------|------------|--|--|----|---|--|--------------|------------|--|--|
| CH00 | <div><div>Spectrum</div><div><div>Ref Level 10.50 dBm</div><div>Offset 1.00 dB</div><div>RBW 100 kHz</div><div>Att 20 dB</div><div>SWT 1.1 ms</div><div>VBW 300 kHz</div><div>Mode Auto Sweep</div><div>Count 300/300</div></div><div><div>1Pk Max</div><div><div>0 dBm</div><div>-10 dBm</div><div>-20 dBm</div><div>-30 dBm</div><div>-40 dBm</div><div>-50 dBm</div><div>-60 dBm</div><div>-70 dBm</div><div>-80 dBm</div></div><div><div>M1[1]</div><div>-8.87 dBm</div><div>2.402180 GHz</div><div>M2[1]</div><div>-61.25 dBm</div><div>2.400000 GHz</div><div>M3</div><div>-69.78 dBm</div><div>2.39 GHz</div><div>M4</div><div>-69.46 dBm</div><div>2.31 GHz</div><div>M5</div><div>-60.95 dBm</div><div>2.399355 GHz</div></div><div><div>Start 2.31 GHz</div><div>691 pts</div><div>Stop 2.405 GHz</div></div><div><div>Marker</div><table><tr><th>Type</th><th>Ref</th><th>Trc</th><th>X-value</th><th>Y-value</th><th>Function</th><th>Function Result</th></tr><tr><td>M1</td><td>1</td><td></td><td>2.40218 GHz</td><td>-8.87 dBm</td><td></td><td></td></tr><tr><td>M2</td><td>1</td><td></td><td>2.4 GHz</td><td>-61.25 dBm</td><td></td><td></td></tr><tr><td>M3</td><td>1</td><td></td><td>2.39 GHz</td><td>-69.78 dBm</td><td></td><td></td></tr><tr><td>M4</td><td>1</td><td></td><td>2.31 GHz</td><td>-69.46 dBm</td><td></td><td></td></tr><tr><td>M5</td><td>1</td><td></td><td>2.399355 GHz</td><td>-60.95 dBm</td><td></td><td></td></tr></table></div></div></div> | Type | Ref | Trc | X-value | Y-value | Function | Function Result | M1 | 1 | | 2.40218 GHz | -8.87 dBm | | | M2 | 1 | | 2.4 GHz | -61.25 dBm | | | M3 | 1 | | 2.39 GHz | -69.78 dBm | | | M4 | 1 | | 2.31 GHz | -69.46 dBm | | | M5 | 1 | | 2.399355 GHz | -60.95 dBm | | |
| Type | Ref | Trc | X-value | Y-value | Function | Function Result | | | | | | | | | | | | | | | | | | | | | | | | | | | | | | | | | | | | | |
| M1 | 1 | | 2.40218 GHz | -8.87 dBm | | | | | | | | | | | | | | | | | | | | | | | | | | | | | | | | | | | | | | | |
| M2 | 1 | | 2.4 GHz | -61.25 dBm | | | | | | | | | | | | | | | | | | | | | | | | | | | | | | | | | | | | | | | |
| M3 | 1 | | 2.39 GHz | -69.78 dBm | | | | | | | | | | | | | | | | | | | | | | | | | | | | | | | | | | | | | | | |
| M4 | 1 | | 2.31 GHz | -69.46 dBm | | | | | | | | | | | | | | | | | | | | | | | | | | | | | | | | | | | | | | | |
| M5 | 1 | | 2.399355 GHz | -60.95 dBm | | | | | | | | | | | | | | | | | | | | | | | | | | | | | | | | | | | | | | | |
| CH39 | <div><div>Spectrum</div><div><div>Ref Level 10.50 dBm</div><div>Offset 1.00 dB</div><div>RBW 100 kHz</div><div>Att 20 dB</div><div>SWT 56.9 µs</div><div>VBW 300 kHz</div><div>Mode Auto FFT</div><div>Count 100/100</div></div><div><div>1Pk Max</div><div><div>0 dBm</div><div>-10 dBm</div><div>-20 dBm</div><div>-30 dBm</div><div>-40 dBm</div><div>-50 dBm</div><div>-60 dBm</div><div>-70 dBm</div><div>-80 dBm</div></div><div><div>M1[1]</div><div>-9.84 dBm</div><div>2.4796710 GHz</div><div>M2[1]</div><div>-65.92 dBm</div><div>2.4835000 GHz</div><div>M3</div><div>-69.12 dBm</div><div>2.5 GHz</div><div>M4</div><div>-64.45 dBm</div><div>2.4838986 GHz</div></div><div><div>Start 2.478 GHz</div><div>691 pts</div><div>Stop 2.5 GHz</div></div><div><div>Marker</div><table><tr><th>Type</th><th>Ref</th><th>Trc</th><th>X-value</th><th>Y-value</th><th>Function</th><th>Function Result</th></tr><tr><td>M1</td><td>1</td><td></td><td>2.479671 GHz</td><td>-9.84 dBm</td><td></td><td></td></tr><tr><td>M2</td><td>1</td><td></td><td>2.4835 GHz</td><td>-65.92 dBm</td><td></td><td></td></tr><tr><td>M3</td><td>1</td><td></td><td>2.5 GHz</td><td>-69.12 dBm</td><td></td><td></td></tr><tr><td>M4</td><td>1</td><td></td><td>2.4838986 GHz</td><td>-64.45 dBm</td><td></td><td></td></tr></table></div></div></div> | Type | Ref | Trc | X-value | Y-value | Function | Function Result | M1 | 1 | | 2.479671 GHz | -9.84 dBm | | | M2 | 1 | | 2.4835 GHz | -65.92 dBm | | | M3 | 1 | | 2.5 GHz | -69.12 dBm | | | M4 | 1 | | 2.4838986 GHz | -64.45 dBm | | | | | | | | | |
| Type | Ref | Trc | X-value | Y-value | Function | Function Result | | | | | | | | | | | | | | | | | | | | | | | | | | | | | | | | | | | | | |
| M1 | 1 | | 2.479671 GHz | -9.84 dBm | | | | | | | | | | | | | | | | | | | | | | | | | | | | | | | | | | | | | | | |
| M2 | 1 | | 2.4835 GHz | -65.92 dBm | | | | | | | | | | | | | | | | | | | | | | | | | | | | | | | | | | | | | | | |
| M3 | 1 | | 2.5 GHz | -69.12 dBm | | | | | | | | | | | | | | | | | | | | | | | | | | | | | | | | | | | | | | | |
| M4 | 1 | | 2.4838986 GHz | -64.45 dBm | | | | | | | | | | | | | | | | | | | | | | | | | | | | | | | | | | | | | | | |

| Test Item: | SE |
|-------------------------|--------------------------------------------------------------------------------------|
| CH00 Reference level |  |
| CH00 30MHz~1000MHz |  |
| CH00 1GHz~26GHz |  |

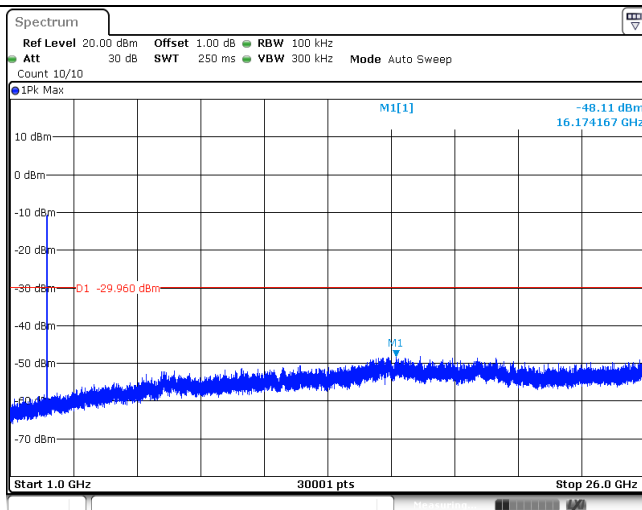
CH19
Reference level



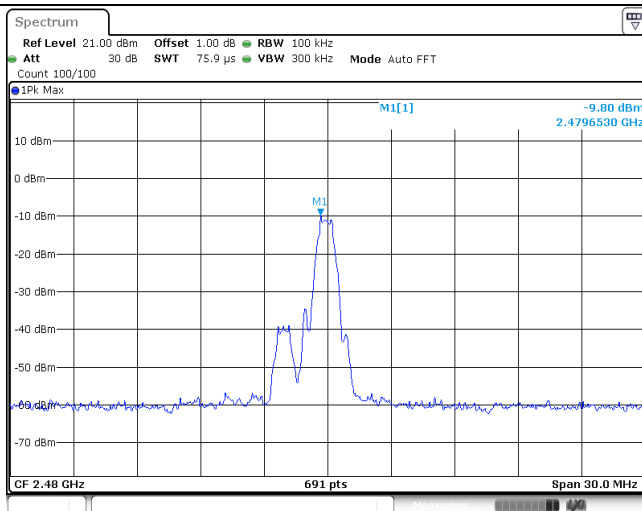
CH19
30MHz~1000MHz



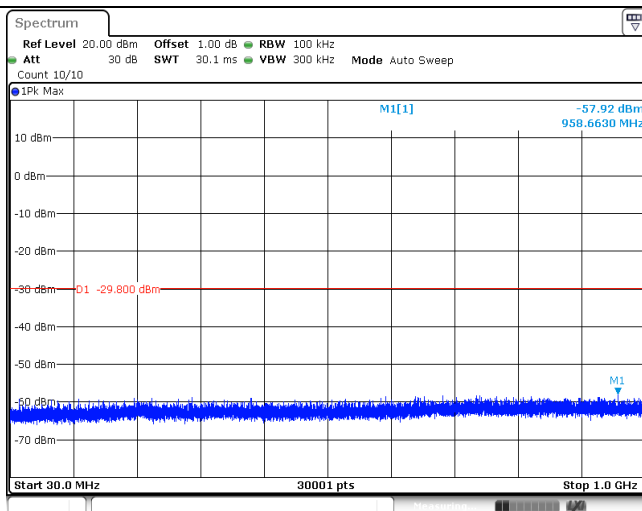
CH19
1GHz~26GHz



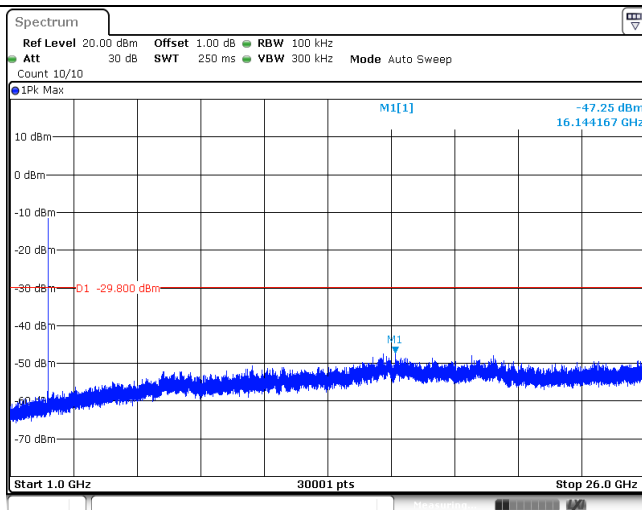
CH39
Reference level



CH39
30MHz~1000MHz



CH39
1GHz~26GHz



5.8. Spurious Emissions (radiated)

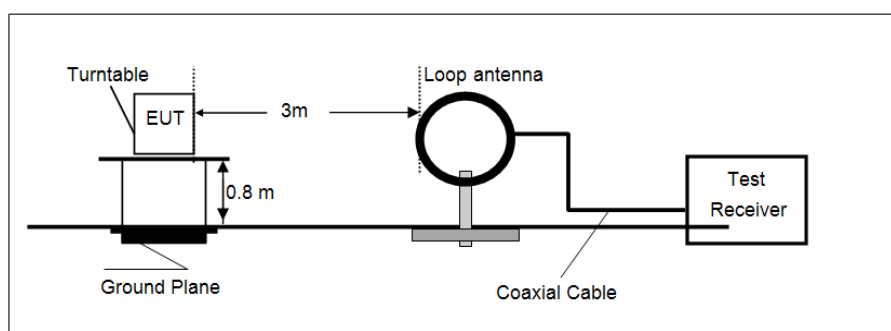
LIMIT

FCC CFR Title 47 Part 15 Subpart C Section 15.209

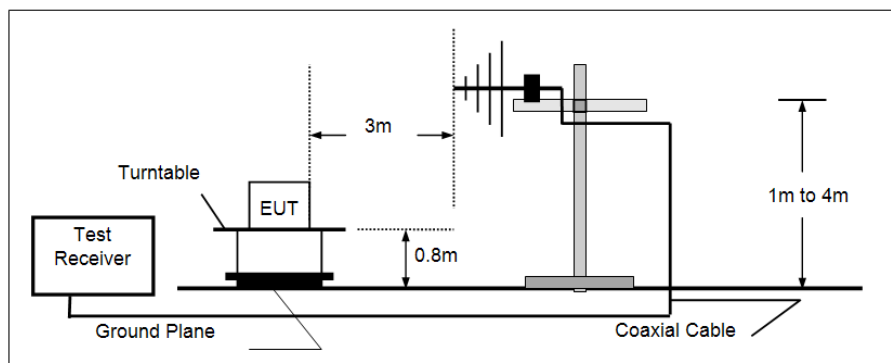
| Frequency | Limit (dBuV/m @3m) | Value |
|---------------|--------------------|------------|
| 30MHz~88MHz | 40.00 | Quasi-peak |
| 88MHz~216MHz | 43.50 | Quasi-peak |
| 216MHz~960MHz | 46.00 | Quasi-peak |
| 960MHz~1GHz | 54.00 | Quasi-peak |
| Above 1GHz | 54.00 | Average |
| | 74.00 | Peak |

TEST CONFIGURATION

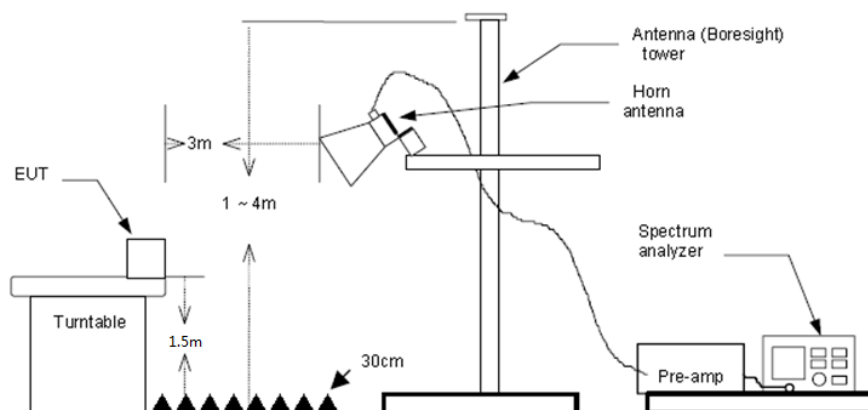
- 9 kHz ~ 30 MHz



- 30 MHz ~ 1 GHz



- Above 1 GHz



TEST PROCEDURE

1. The EUT was setup and tested according to ANSI C63.10:2013 for compliance to FCC 47CFR 15.247 requirements.
2. The EUT is placed on a turn table which is 0.8 meter above ground for below 1 GHz, and 1.5 m for above 1 GHz. The turn table is rotated 360 degrees to determine the position of the maximum emission level.
3. The EUT was set 3 meters from the receiving antenna, which was mounted on the top of a variable height antenna tower.
4. For each suspected emission, the EUT was arranged to its worst case and then tune the Antenna tower (from 1 m to 4 m) and turntable (from 0 degree to 360 degrees) to find the maximum reading. A pre-amp and a high pass filter are used for the test in order to get better signal level to comply with the guidelines.
5. Set to the maximum power setting and enable the EUT transmit continuously.
6. Use the following spectrum analyzer settings
 - (1) Span shall wide enough to fully capture the emission being measured;
 - (2) Below 1 GHz:
RBW=120 kHz, VBW=300 kHz, Sweep=auto, Detector function=peak, Trace=max hold;
If the emission level of the EUT measured by the peak detector is 3 dB lower than the applicable limit, the peak emission level will be reported. Otherwise, the emission measurement will be repeated using the quasi-peak detector and reported.
 - (3) From 1 GHz to 10th harmonic:
RBW=1MHz, VBW=3MHz Peak detector for Peak value.
RBW=1MHz, VBW=3MHz RMS detector for Average value.

TEST MODE:

Please refer to the clause 3.3

TEST RESULTS

☒ **Passed** ☐ **Not Applicable**

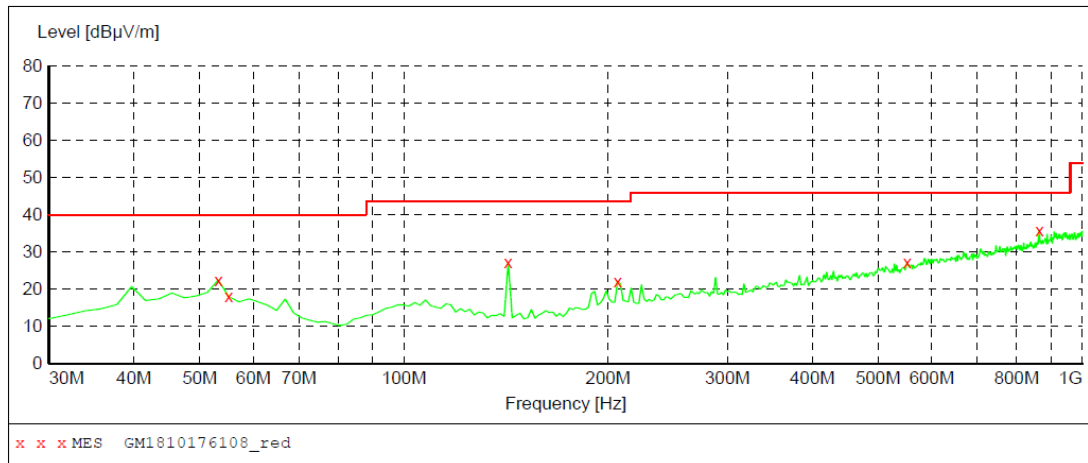
Note:

- 1) Above 1GHz Final Level =Receiver Read level + Antenna Factor + Cable Loss – Preamplifier Factor
 - 2) The emission levels of other frequencies are very lower than the limit and not show in test report.
- **9 kHz ~ 30 MHz**
The EUT was pre-scanned the frequency band (9 kHz ~ 30 MHz), found the radiated level lower than the limit, so don't show on the report.
- **30 MHz ~ 1000 MHz**
Have pre-scan all modulation mode, found the BT-BLE mode CH39 which it was worst case, so only the worst case's data on the test report.

➤ 30 MHz ~ 1 GHz

Polarization:

Vertical

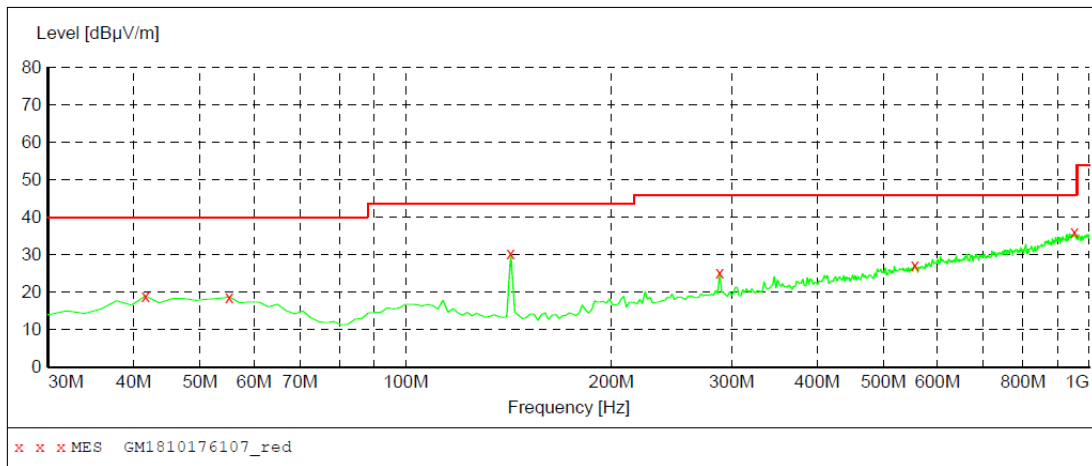
**MEASUREMENT RESULT: "GM1810176108_red"**

10/17/2018 8:53PM

| Frequency MHz | Level dBuV/m | Transd dB | Limit dBuV/m | Margin dB | Det. | Height cm | Azimuth deg | Polarization |
|------------------|-----------------|--------------|-----------------|--------------|------|--------------|----------------|--------------|
| 53.280000 | 22.50 | -9.0 | 40.0 | 17.5 | QP | 100.0 | 76.00 | VERTICAL |
| 55.220000 | 18.00 | -9.1 | 40.0 | 22.0 | QP | 100.0 | 342.00 | VERTICAL |
| 142.520000 | 27.30 | -13.7 | 43.5 | 16.2 | QP | 100.0 | 236.00 | VERTICAL |
| 206.540000 | 22.10 | -10.2 | 43.5 | 21.4 | QP | 100.0 | 331.00 | VERTICAL |
| 551.860000 | 27.10 | 0.0 | 46.0 | 18.9 | QP | 100.0 | 209.00 | VERTICAL |
| 864.200000 | 35.90 | 6.6 | 46.0 | 10.1 | QP | 100.0 | 88.00 | VERTICAL |

Polarization:

Horizontal

**MEASUREMENT RESULT: "GM1810176107_red"**

10/17/2018 8:50PM

| Frequency MHz | Level dBuV/m | Transd dB | Limit dBuV/m | Margin dB | Det. | Height cm | Azimuth deg | Polarization |
|------------------|-----------------|--------------|-----------------|--------------|------|--------------|----------------|--------------|
| 41.640000 | 19.00 | -9.5 | 40.0 | 21.0 | QP | 300.0 | 129.00 | HORIZONTAL |
| 55.220000 | 18.80 | -9.1 | 40.0 | 21.2 | QP | 100.0 | 13.00 | HORIZONTAL |
| 142.520000 | 30.40 | -13.7 | 43.5 | 13.1 | QP | 100.0 | 111.00 | HORIZONTAL |
| 288.020000 | 25.30 | -7.2 | 46.0 | 20.7 | QP | 100.0 | 98.00 | HORIZONTAL |
| 555.740000 | 27.30 | 0.0 | 46.0 | 18.7 | QP | 100.0 | 232.00 | HORIZONTAL |
| 951.500000 | 36.00 | 8.2 | 46.0 | 10.0 | QP | 100.0 | 355.00 | HORIZONTAL |

➤ 1 GHz ~ 25 GHz

| Test channel | | | | | CH00 | | | | |
|-----------------|-------------------|-----------------------|-----------------|--------------------------|----------------|---------------------|-----------------|--------------|------------|
| Frequency (MHz) | Read Level (dBuV) | Antenna Factor (dB/m) | Cable Loss (dB) | Preamplifier Factor (dB) | Level (dBuV/m) | Limit Line (dBuV/m) | Over Limit (dB) | Polarization | Test value |
| 1198.10 | 36.29 | 26.29 | 4.66 | 37.23 | 30.01 | 74.00 | -43.99 | Vertical | Peak |
| 2995.54 | 39.31 | 28.60 | 7.48 | 37.58 | 37.81 | 74.00 | -36.19 | Vertical | Peak |
| 4983.99 | 34.29 | 31.48 | 9.66 | 35.41 | 40.02 | 74.00 | -33.98 | Vertical | Peak |
| 7489.60 | 32.80 | 36.12 | 12.36 | 33.04 | 48.24 | 74.00 | -25.76 | Vertical | Peak |
| 1198.10 | 36.60 | 26.29 | 4.66 | 37.23 | 30.32 | 74.00 | -43.68 | Horizontal | Peak |
| 2995.54 | 39.98 | 28.60 | 7.48 | 37.58 | 38.48 | 74.00 | -35.52 | Horizontal | Peak |
| 4809.50 | 35.46 | 31.58 | 9.55 | 35.72 | 40.87 | 74.00 | -33.13 | Horizontal | Peak |
| 7527.83 | 32.30 | 36.13 | 12.49 | 33.02 | 47.90 | 74.00 | -26.10 | Horizontal | Peak |

| Test channel | | | | | CH19 | | | | |
|-----------------|-------------------|-----------------------|-----------------|--------------------------|----------------|---------------------|-----------------|--------------|------------|
| Frequency (MHz) | Read Level (dBuV) | Antenna Factor (dB/m) | Cable Loss (dB) | Preamplifier Factor (dB) | Level (dBuV/m) | Limit Line (dBuV/m) | Over Limit (dB) | Polarization | Test value |
| 1210.36 | 37.20 | 26.29 | 4.68 | 37.22 | 30.95 | 74.00 | -43.05 | Vertical | Peak |
| 2995.54 | 37.89 | 28.60 | 7.48 | 37.58 | 36.39 | 74.00 | -37.61 | Vertical | Peak |
| 4883.52 | 33.92 | 31.43 | 9.59 | 35.58 | 39.36 | 74.00 | -34.64 | Vertical | Peak |
| 8462.98 | 32.36 | 36.79 | 12.86 | 32.92 | 49.09 | 74.00 | -24.91 | Vertical | Peak |
| 1646.95 | 34.97 | 25.04 | 5.66 | 37.24 | 28.43 | 74.00 | -45.57 | Horizontal | Peak |
| 3003.17 | 39.39 | 28.61 | 7.48 | 37.58 | 37.90 | 74.00 | -36.10 | Horizontal | Peak |
| 4883.52 | 37.60 | 31.43 | 9.59 | 35.58 | 43.04 | 74.00 | -30.96 | Horizontal | Peak |
| 8022.46 | 32.48 | 37.08 | 12.35 | 33.06 | 48.85 | 74.00 | -25.15 | Horizontal | Peak |

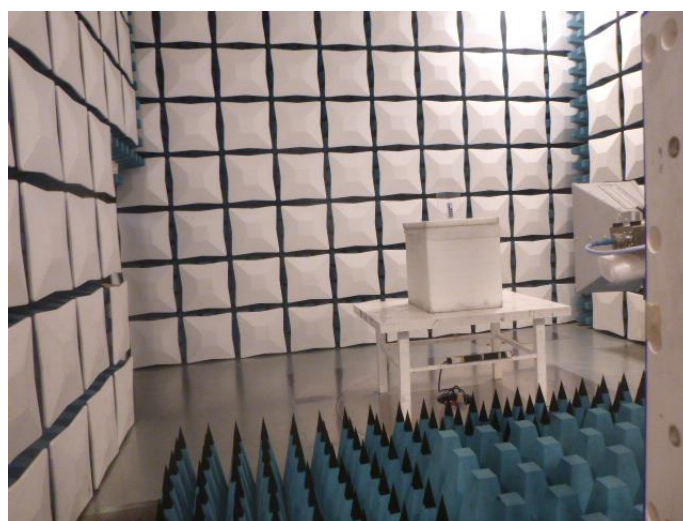
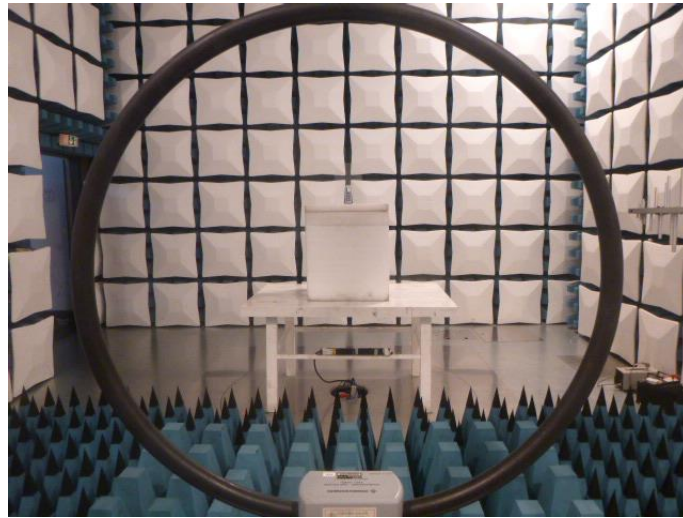
| Test channel | | | | | CH39 | | | | |
|-----------------|-------------------|-----------------------|-----------------|--------------------------|----------------|---------------------|-----------------|--------------|------------|
| Frequency (MHz) | Read Level (dBuV) | Antenna Factor (dB/m) | Cable Loss (dB) | Preamplifier Factor (dB) | Level (dBuV/m) | Limit Line (dBuV/m) | Over Limit (dB) | Polarization | Test value |
| 1195.05 | 35.94 | 26.26 | 4.65 | 37.23 | 29.62 | 74.00 | -44.38 | Vertical | Peak |
| 2995.54 | 41.05 | 28.60 | 7.48 | 37.58 | 39.55 | 74.00 | -34.45 | Vertical | Peak |
| 4983.99 | 35.35 | 31.48 | 9.66 | 35.41 | 41.08 | 74.00 | -32.92 | Vertical | Peak |
| 7860.74 | 31.75 | 36.47 | 12.97 | 33.06 | 48.13 | 74.00 | -25.87 | Vertical | Peak |
| 1213.44 | 35.94 | 26.29 | 4.68 | 37.22 | 29.69 | 74.00 | -44.31 | Horizontal | Peak |
| 2995.54 | 40.80 | 28.60 | 7.48 | 37.58 | 39.30 | 74.00 | -34.70 | Horizontal | Peak |
| 4958.68 | 33.62 | 31.46 | 9.64 | 35.45 | 39.27 | 74.00 | -34.73 | Horizontal | Peak |
| 7921.00 | 31.81 | 36.78 | 12.68 | 33.06 | 48.21 | 74.00 | -25.79 | Horizontal | Peak |

Remark:

1. Final Level = Receiver Read level + Antenna Factor + Cable Loss – Preamplifier Factor
2. The peak level is lower than average limit(54dBuV/m), this data is the too weak instrument of signal is unable to test.
3. The emission levels of other frequencies are very lower than the limit and not show in test report.

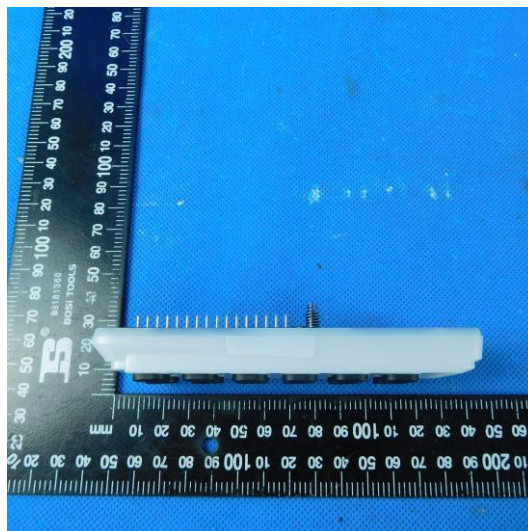
6. TEST SETUP PHOTOS

Radiated Emissions



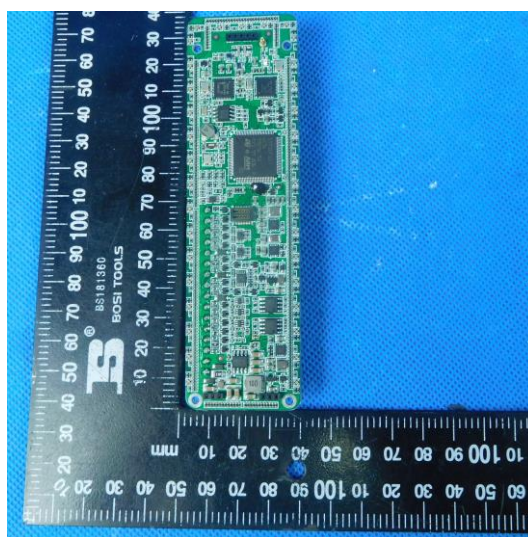
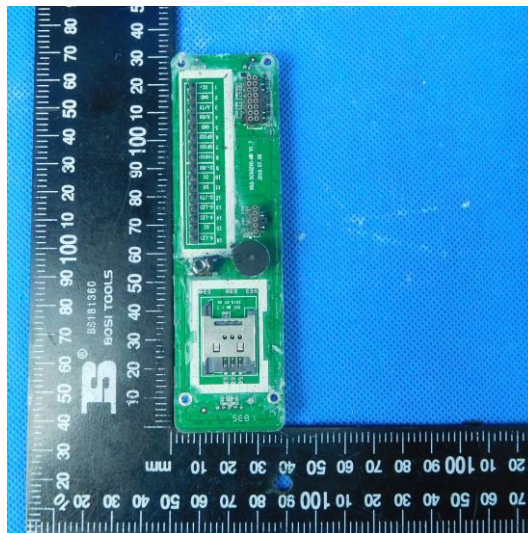
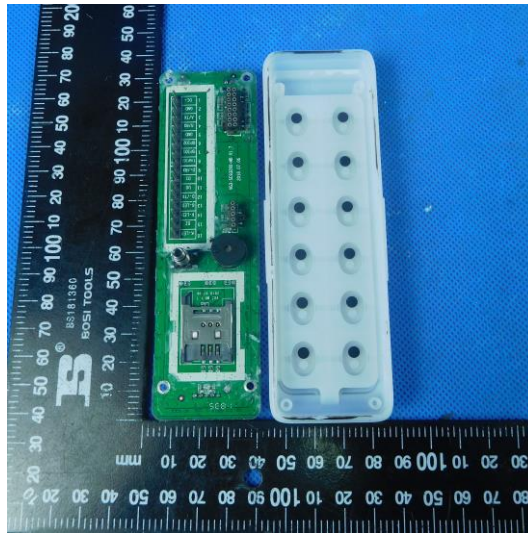
7. EXTERNAL AND INTERNAL PHOTOS

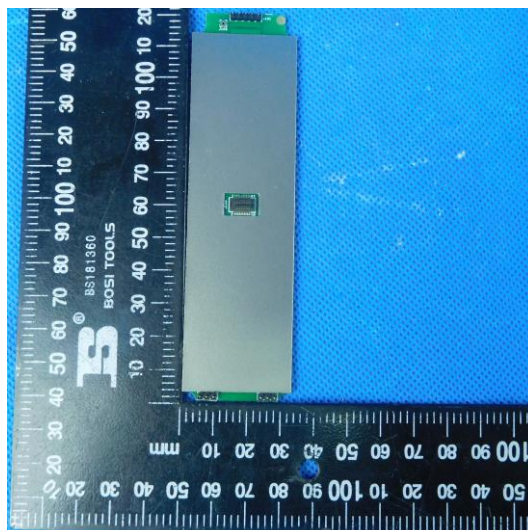
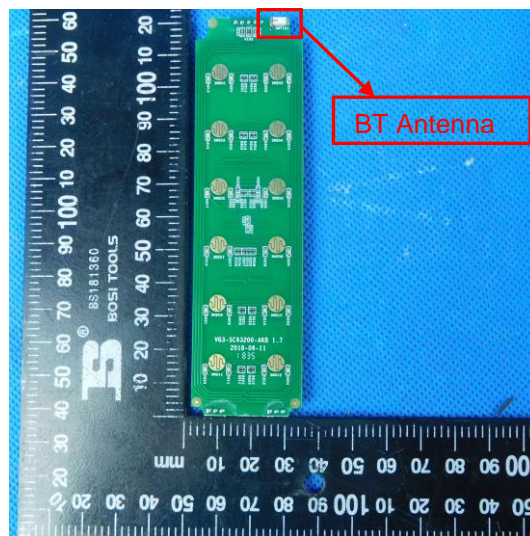
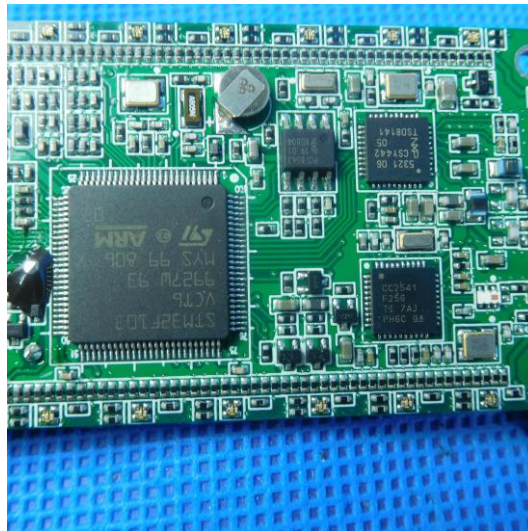
External Photo

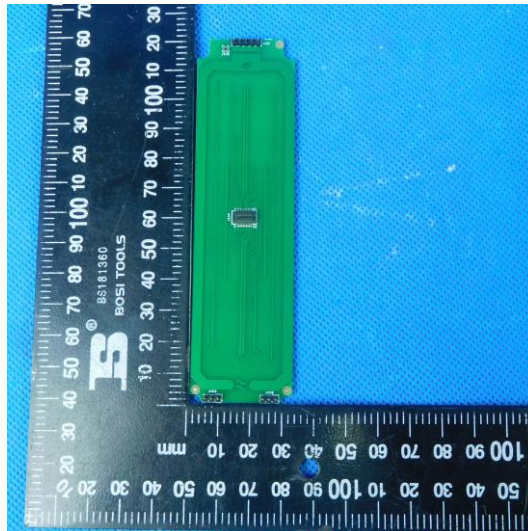




Internal photo







-----End of Report-----