

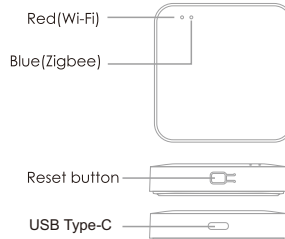
# Size: 45\*45mm

## Multi-mode Gateway

### User Manual



## Presentation



-2-

## Specification

Material: ABS  
Size: 60\*60\*14mm  
Micro input: DC 5V/1A  
Wi-Fi Frequency: 2.4GHz 802.11b/g/n  
Zigbee Frequency: IEEE 802.15.4  
Working Temperature: -20 C ~ 85 C

-3-

## Checklist before usage:

- Your smartphone has connected to a 2.4GHz Wi-Fi network.
- Input the correct Wi-Fi password.
- Your smartphone must be Android 4.4 + or iOS 8.0 +.
- Your Wi-Fi router is MAC-open.
- If numbers of devices connected to the Wi-Fi router reach the limit, you can try to disable device to vacate channel or try another Wi-Fi router.

-4-

## How to set up:

- Use your smartphone to scan below QR code, or search "Smart Life" app in Google Play Store or APP Store to download and install.



Smart Life

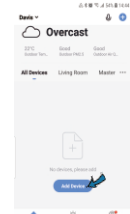


QR Code

- Create an account with your mobile number and authentication code.

-5-

- Connect your mobile to your Wi-Fi router, click "+" in the upper right corner of homepage or click "Add Device".



-6-

## 4. Supply power to the gateway with supplied Micro charging cable.

### FCC Warning

This device complies with Part 15 of the FCC Rules. Operation is subject to the following two conditions:  
(1) This device may not cause harmful interference, and (2) this device must accept any interference received, including interference that may cause undesired operation.

NOTE 1: This equipment has been tested and found to comply with the limits for a Class B digital device, pursuant to part 15 of the FCC Rules. These limits are designed to provide reasonable protection against harmful interference in a residential installation. This equipment generates, uses and can radiate radio frequency energy and, if not installed and used in accordance with the instructions, may cause harmful interference to radio communications. However, there is no guarantee that interference will not occur in a particular installation. If this equipment does cause harmful interference to radio or television reception, which can be determined by turning the equipment off and on, the user is encouraged to try to correct the interference by one or more of the following measures:  
- Reorient or relocate the receiving antenna.  
- Increase the separation between the equipment and receiver.  
- Connect the equipment into an outlet on a circuit different from that which the receiver is connected.  
- Consult the dealer or an experienced radio/TV technician for help.

NOTE 2: Any changes or modifications to this unit not expressly approved by the party responsible for compliance could void the user's authority to operate the equipment.

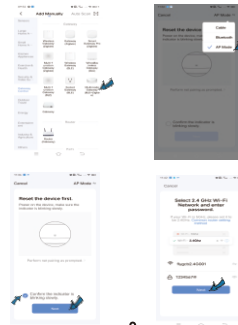
### RF Exposure Statement

To maintain compliance with FCC's RF Exposure guidelines, This equipment should be installed and operated with minimum 20cm between the radiator and your body. This device and its antenna(s) must not be co-located or operation in conjunction with any other antenna or transmitter.

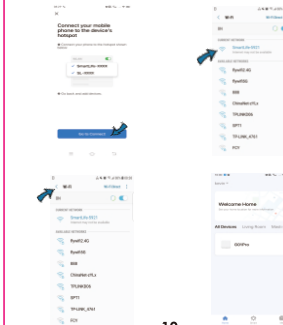
### 2) AP Mode

Select "Multimode Gateway (Zigbee)" from "Gateway Control", then select "AP Mode", make sure the red indicator is blinking slowly, connect your mobile to device's hotspot: "SmartLife-XXXX", then click to return to App Interface, it will connect.

-8-



-9-

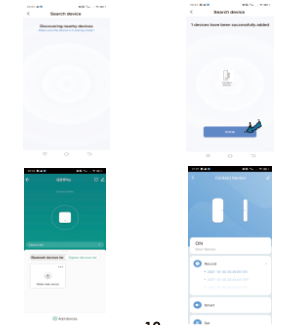


-10-

- Click "Add devices", select "Add new devices", it will discover nearby devices, make sure the device is in pairing mode. After device is added successfully, you can monitor the status of the device.



-11-



-12-