

EN Remove SIM tray with ejector tool
ES Retire la bandeja SIM con la herramienta
PT Remova a bandeja SIM com a ferramenta

EN Insert SIM card(s)
ES Inserte la(s) tarjeta(s) SIM
PT Insira o(s) cartão(ões) SIM

EN Insert memory card (Optional)
ES Inserte la tarjeta de memoria (Opcional)
PT Insira o cartão de memória (opcional)

EN Replace SIM tray
ES Inserte bandeja SIM
PT Insira a bandeja SIM

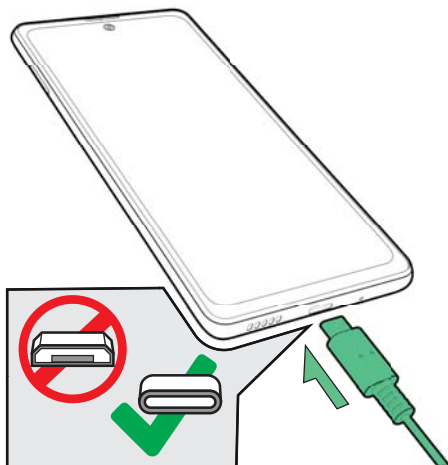
KRIP

www.krip.com

EN Google, Google Play and other marks are trademarks of Google LLC.

ES Google y Google Play son marcas de Google LLC.

PT Google e Google Play são marcas comerciais da Google LLC.

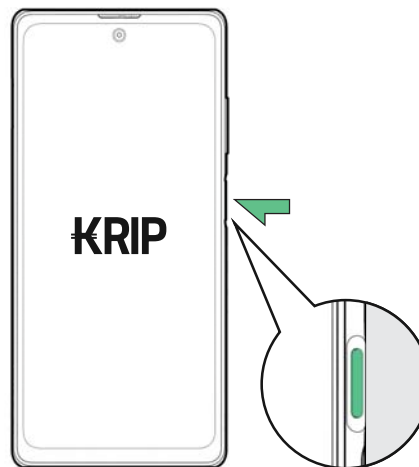


EN Insert USB cable and charge for 8 hours

ES Inserte el cable USB y cargue por 8 horas

PT Insira o e carregue durante 8 horas

5



EN Power on and run initial setup

ES Encender y ejecutar la configuración inicial

PT Ligar e executar a configuração inicial

6



KRIP K68

EN Quick Start Guide

ES Guía de Inicio Rápido

PT Guia de Início Rápido

WARNING

Any changes or modifications not expressly approved by the party responsible for compliance could void the user's authority to operate this equipment. This device complies with Part 15 of the FCC Rules. Operation is subject to the following two conditions:

- (1) This device may not cause harmful interference, and
- (2) this device must accept any interference received, including interference that may cause undesired operation.

This Product meets the government's requirements for exposure to radio waves. The guidelines are based on standards that were developed by independent scientific organizations through periodic and thorough evaluation of scientific studies. The standards include a substantial safety margin designed to assure the safety of all persons regardless of age or health. FCC RF Exposure Information and Statement the SAR limit of USA (FCC) is 1.6 W/kg averaged over one gram of this Device K68(FCC ID:2APX7K68 has been tested against this SAR limit. SAR information on this can be viewed on-line at <http://www.fcc.gov/oet/ea/fccid/>. Please use the device FCC ID number for search. This device was tested for typical operations 10mm from the body. To maintain compliance with FCC RF exposure requirements, 10mm separation distance should. maintained to the user's bodies

NOTE:

This equipment has been tested and found to comply with the limits for a Class B digital device, pursuant to Part 15 of the FCC Rules.

These limits are designed to provide reasonable protection against harmful interference in a residential installation.

This equipment generates, uses and can radiate radio frequency energy and, if not installed and used in accordance with the instructions, may cause harmful interference to radio communications. However, there is no guarantee that interference will not occur in a particular installation.

If this equipment does cause harmful interference to radio or television reception, which can be determined by turning the equipment off and on, the user is encouraged to try to correct the interference by one or more of the following measures:

- Reorient or relocate the receiving antenna.
- Increase the separation between the equipment and receiver.
- Connect the equipment into an outlet on a circuit different from that to which the receiver is connected.
- Consult the dealer or an experienced radio/TV technician for help.