

K65

4G Smartphone

User Guide

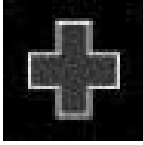


CONTENTS

1. For Your Safety	3
2. Getting Started	5
3. Phone Layout	6
4.arnings and Notes	7
5. Health and safety	11

1. For Your Safety

Read these simple guidelines, not following them may be dangerous or illegal.



SWITCH OFF IN HOSPITALS

Follow any restrictions, Switch the device off near medical equipment, do not use the device where blasting is in progress.

Please keep this cell phone away from children, as they could mistake it for a toy, and hurt themselves with it.

Don't try to modify the phone except by the professional.

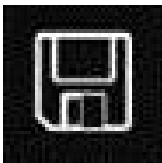
Warning!

Only use the authorized spare parts, otherwise it may damage the phone and the warranty will be void, and it may be dangerous.



SWITCH OFF WHEN REFUELING

Don't use the phone at a refueling point. Don't use near fuel or chemicals.



SIM CARD AND T-FLASH CARD ARE PORTABLE

Keep your phone, phone parts and accessories out of children's reach.

Notice: The T-flash card can be used as a Memory Disk, the USB cable is necessary.



BATTERY

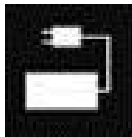
Please do not destroy or damage the battery, it can be dangerous and cause fire.

Please do not throw battery in fire **to avoid danger.**

When battery cannot be used, **please dispose in an environment safe method**

Do not try to dismantle the battery.

If the battery or the charger is broken or old, please stop using them, **and replace with certified genuine battery.**



USE QUALITY EQUIPMENT

Use our authorized equipment to avoid danger.



ROAD SAFETY COMES FIRST

Give full attention while driving, pull off the road or park before using your phone, **please follow traffic rules of local city or town.**



INTERFERENCE

All wireless devices may be susceptible to cause interference, which could affect performance.



SWITCH OFF IN AIRCRAFT

Wireless devices can cause interference in aircraft.

It's not only dangerous but also illegal to use mobile phone in an aircraft.

2. Getting Started

Note: User Manual is just to guide the user about the functionality of the phone. This does not seem any certificate of technology. Some functions may vary due to modifications and upgrade of software, or due to print mistake.

> Battery install notice

Before you install or change battery, please ensure you already turn off the phone.

> Install or change SIM card Notice

- * Before you change SIM card, please make sure you already turn off the phone and dispose battery.

- * Insert the SIM card and make the golden contact area face down and the nick face out.

> Charge the battery

- * Before charging the battery, please make sure that the battery is installed properly in the phone.

- * Connect the charger lead to the phone socket, and then connect the charger to the AC socket.

- * If the phone is off when it's charger, charging indicator is displayed on the screen, if the phone is on when it's charging, user can use it while charging. When the battery is fully charged, the charging indicator on the screen is full and stops

twinkling, while using the handset for the first time, please completely discharge and then completely charge the battery. Repeat the process for three times to achieve the full performance of the battery. Long period unused or some other reasons may cause low battery pressure, so at the beginning of charging the screen is black and it may take a while before the charging indicator appears. Warning: when charging, in order to avoid serious damage to phone circuitry, do not remove or dispose the battery.

3. Phone Layout



1 Earphone Socket	2 Receiver
3 P&L Sensor	4 Front Camera
5 Volume Key	6 Power Key
7 Screen	8 Speaker
9 USB Socket	10 Rear Camera
11 Rear Flashlight	12 Fingerprint Sensor

4. Warnings and Notes

Operational Warnings

IMPORTANT INFORMATION ON SAFE AND EFFICIENT OPERATION, Read this information before using your phone. For the safe and efficient operation of your phone, observe these guidelines:

potential explosive at atmospheres: Turn off your phone when you are in any areas with a potentially explosive atmosphere, such as fueling area (gas or petrol stations, below deck on boats), storage facilities for fuel or chemicals, blasting areas and areas near electrical blasting caps, and areas where there are chemicals or particles (such as metal powders, grain, and dust) in the air.

Interference to medical and personal

Electronical Devices: Most but not all electronic equipment is shielded from RF signals and certain electronic equipment may not be shielded against the RF signals from your phone.

Audio Safety: this phone is capable of producing loud noises which may damage your hearing.

When using the speaker phone feature, it is recommended that you place your phone at a safe distance from your ear.

Other Media Devices, Hospitals: if you use any another personal medical device, consult the manufacture of your device to determine if it is adequately shielded from external RF energy. Your Physician may be able to assist you in obtain this information. Turn your phone OFF in health care facilities when any regulations posted in these areas instruct you to do so.ospitals or health care facilities m ay be using equipment that could be sensitive to external RF energy.

Product statement on handling and use: you alone are responsible for how you use your phone and any consequence of its use. You must always switch off you phone wherever the use of a phone is prohibited. Use of your phone is subject to safety measures designed to protect users and their environment. Always treat your phone and its accessories with care and keep it in a clean and dust-free place. Do not expose your phone or its accessories to open flames or lit tobacco products. Do not expose your phone or its accessories to liquid, moisture, or high humidity.

Do not drop, throw, or try to bend your phone or its accessories.

Do not use harsh chemicals, cleaning solvents, or aerosols to clean the device or its accessories.

Do not attempt to disassemble your phone or its accessories; only authorized personnel must do so.

Do not expose your phone or its accessories to extreme temperatures, minimum 32°F and maximum 113°F (0°C to 45°C).

Battery: your phone includes an internal lithium-ion or lithium-ion polymer battery, please note that use of certain data applications can result in heavy battery use and may require frequent battery charging, any disposal of the phone or battery must comply with laws and regulations pertaining to lithium-ion or lithium-ion polymer batteries.

Faulty and damaged products: Do not attempt to disassemble the phone or its accessory. Only qualified personnel must service or repair the phone or its accessory. If your phone or its accessory has been submerged in water, Punctured, or subjected to severe fall, do not use it until you have taken it to be checked at an authorized service center.

Caution risk of explosion if battery is replaced by an incorrect type. Dispose of used batteries according to the instructions.



Excessive sound pressure from earphones and headphones can cause hearing loss.

To prevent possible hearing damage, do not listen at high volume levels for long periods.

Bluetooth & Wi-Fi

Bluetooth is a short-range wireless communications technology that devices can use to exchange information and connect to different types of devices which include headsets and other devices.

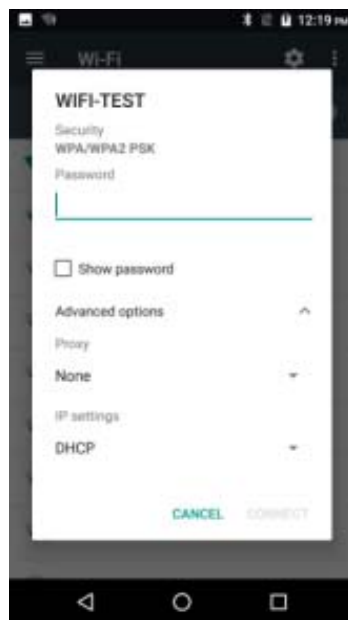
Power on Bluetooth

- 1) Settings » Bluetooth and select to power on Bluetooth.
- 2) The Bluetooth icon will appear in the notification bar. Click “scan for devices” and the phone will start to scan for all devices within range.
- 3) In Bluetooth settings all the devices found will displayed in the list under the icon.

Note: *The maximum detecting time of the phone is 2 minutes.*

Power on Wi-Fi

- 1) Settings » Wi-Fi and select ON to power on Wi-Fi
- 2) Click on the desired Wi-Fi network to be connected. *Unsecured networks can be connected to directly - secured networks require a password or credentials prior to connection.*



components to support operation in this manner. Cases with metal parts may change the RF performance of the device, including its compliance with RF exposure guidelines, in a manner that has not been tested or certified, and use such accessories should be avoided.

5. Health and safety

Please read these simple guidelines. Not following them may be dangerous or illegal.

SAR Recommendations

Use a wireless handsfree system (headphone, headset) with a low power Bluetooth emitter. Please keep your calls short and use SMS whenever more convenient. This advice applies especially to children, adolescents and pregnant women. Make sure the cell phone has a low SAR. Prefer to use your cell phone when the signal quality is good.

People having active medical implants should preferably keep the cell phone at least 15 cm away from the implant.

Maintain a preferable distance of 10 mm from the device.

Safe Driving

Do not use the phone while driving. When you have to use the phone, please use the personal hands-free kit.

Please do not put the phone onto any passenger seat or any place from which it may fall down in case of vehicular collision or emergency braking.

During Flight

Flight is influenced by interference caused by the phone. It is illegal to use a phone on the airplane. Please turn off your phone during a flight.

In Hospitals

Your Phone's radio waves may interfere with the functioning of inadequately shielded medical devices. Consult a physician or the manufacturer of the medical device to determine whether they are adequately shielded from external Radio Frequency. Switch off your device when regulations posted instruct you to do so.

To avoid potential interference with implanted medical devices such as a pacemaker or cardioverter defibrillator:

Always keep your phone at least 15.24 centimeters (6 inches) from the medical device.

Do not carry the wireless device in a breast pocket. Turn off the phone if there is any reason to suspect that interference is taking place.

Follow the manufacturer directions for the implanted medical device.

If you have any questions about using your wireless device with an implanted medical device, consult your health care provider.

Unsafe Areas

Please turn off your phone when you are close to a gas station or in the vicinity of any place where fuel and chemical preparations, or any other dangerous goods are stored.

E-Waste



INFORMATION UNDER E-WASTE (MANAGEMENT AND HANDLING) RULES, 2011

For disposal of e-waste, please call our helpline no. 1800 102 8632 or visit our website:

<http://gionee.co.in/social/>

1. Do's for disposal of product
 - a) Always drop your used electronic products, batteries, and packaging materials after the end of their life in nearest collection point or collection center
 - b) Separate the packaging material according to responsible waste disposal options and sorting for recycling.
2. Don'ts for disposal of equipment
 - a) Never dump E-waste in garbage bins or municipal solid waste stream.
 - b) Do not dispose of your product as unsorted municipal waste.
 - c) Do not throw used batteries into household waste.
 - d) Do not dispose damaged or leaking Lithium Ion

(Li-Ion) battery with normal household waste.

3. Information on the consequences of improper handling, accidental breakage damage and improper recycling of the end of life product.

a) If batteries are not properly disposed of, it can cause harm to human health or the environment.

b) Placing of batteries or devices on or in heating devices, such as microwave ovens, stoves, or radiators and improper disposal of batteries may lead to explosion.

If the battery terminals are in contact with metal objects, it may cause a fire.

Operating Temperature

The cell phone operating temperature is between 0° and 45° C (32° to 113° F). Low- or high-temperature conditions might cause the cell phone to change its performance.

When using the cell phone, it is normal for it to get warm. The exterior of the cell phone functions as a cooling surface that transfers heat from its inside to the cooler air outside.

1. Use careful with the earphone maybe possible excessive sound pressure from earphones and headphones can cause hearing loss.
2. CAUTION : RISK OF EXPLOSION IF BATTERY IS REPLACED BY AN INCORRECT TYPE. DISPOSE OF USED BATTERIES ACCORDING TO THE INSTRUCTIONS
3. The product shall only be connected to a USB interface of version USB 2.0
4. Adapter shall be installed near the equipment and shall be easily accessible.
5. The plug considered as disconnect device of adapter.

FCC Warning:

Any Changes or modifications not expressly approved by the party responsible for compliance could void the user's authority to operate the equipment.

This device complies with part 15 of the FCC Rules.

Operation is subject to the following two conditions: (1) This device may not cause harmful interference, and (2) this device must accept any interference received, including interference that may cause undesired operation

Note: This equipment has been tested and found to comply with the limits for a Class B digital device, pursuant to part 15 of the FCC Rules. These limits are designed to provide reasonable protection against harmful interference in a residential installation. This equipment generates, uses and can radiate radio frequency energy and, if not installed and used in accordance with the instructions, may cause harmful interference to radio communications. However, there is no guarantee that interference will not occur in a particular installation. If this equipment does cause harmful interference to radio or television reception, which can be determined by turning the equipment off and on, the user is encouraged to try to correct the interference by one or more of the following measures:

—Reorient or relocate the receiving antenna.

—Increase the separation between the equipment and receiver.

—Connect the equipment into an outlet on a circuit different from that to which the receiver is connected.

—Consult the dealer or an experienced radio/TV technician for help.

Specific Absorption Rate (SAR) information-

SAR tests are conducted using standard operating positions accepted by the FCC with the phone transmitting at its highest certified power level in all tested frequency bands, although the SAR is determined at the highest certified power level, the actual SAR level of the phone while operating can be well below the maximum value. Before a new model phone is available for sale to the public, it must be tested and certified to the FCC that it does not exceed the exposure limit established by the FCC, tests for each phone are performed in positions and locations as required by the FCC.

For body worn operation, this model phone has been tested and meets the FCC RF exposure guidelines when used with an accessory designated for this product or when used with an accessory that contains no metal and that positions the handset a minimum of 1.0cm from the body. Non-compliance with the above restrictions may result in violation of RF exposure guidelines